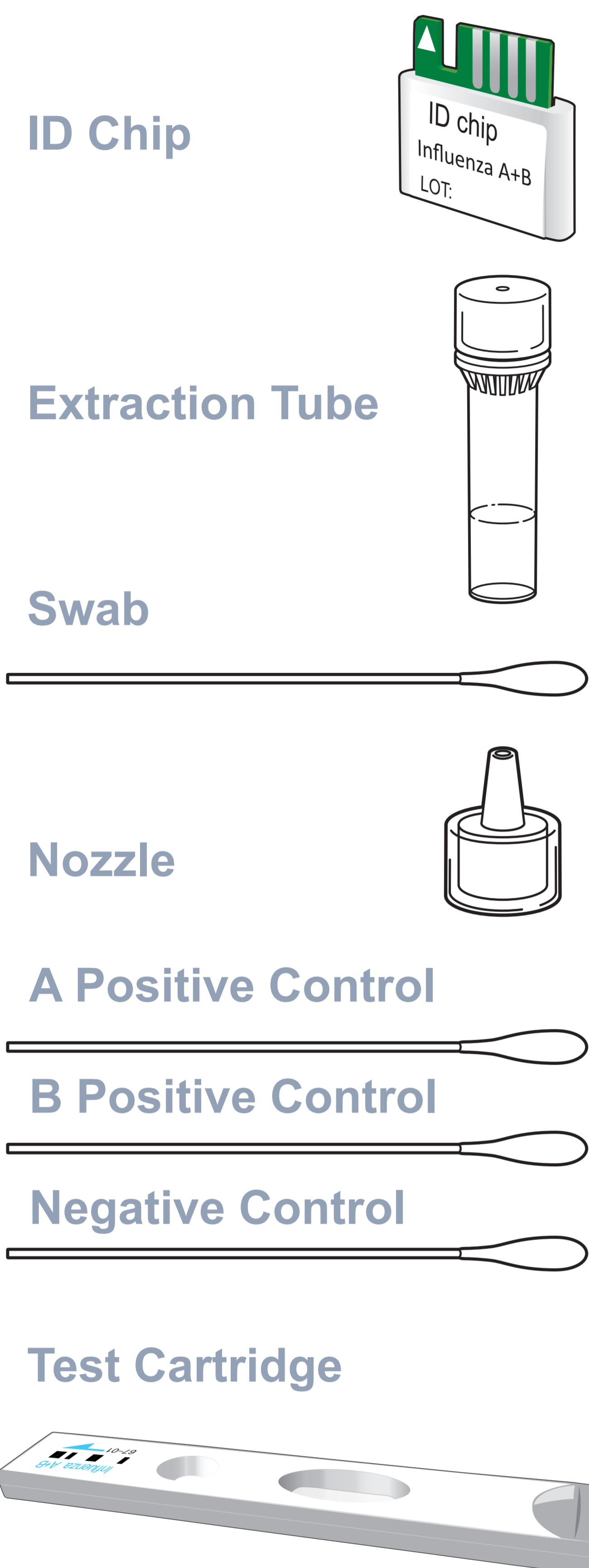


ichromα™ Influenza A+B

Test Setup

Test Components



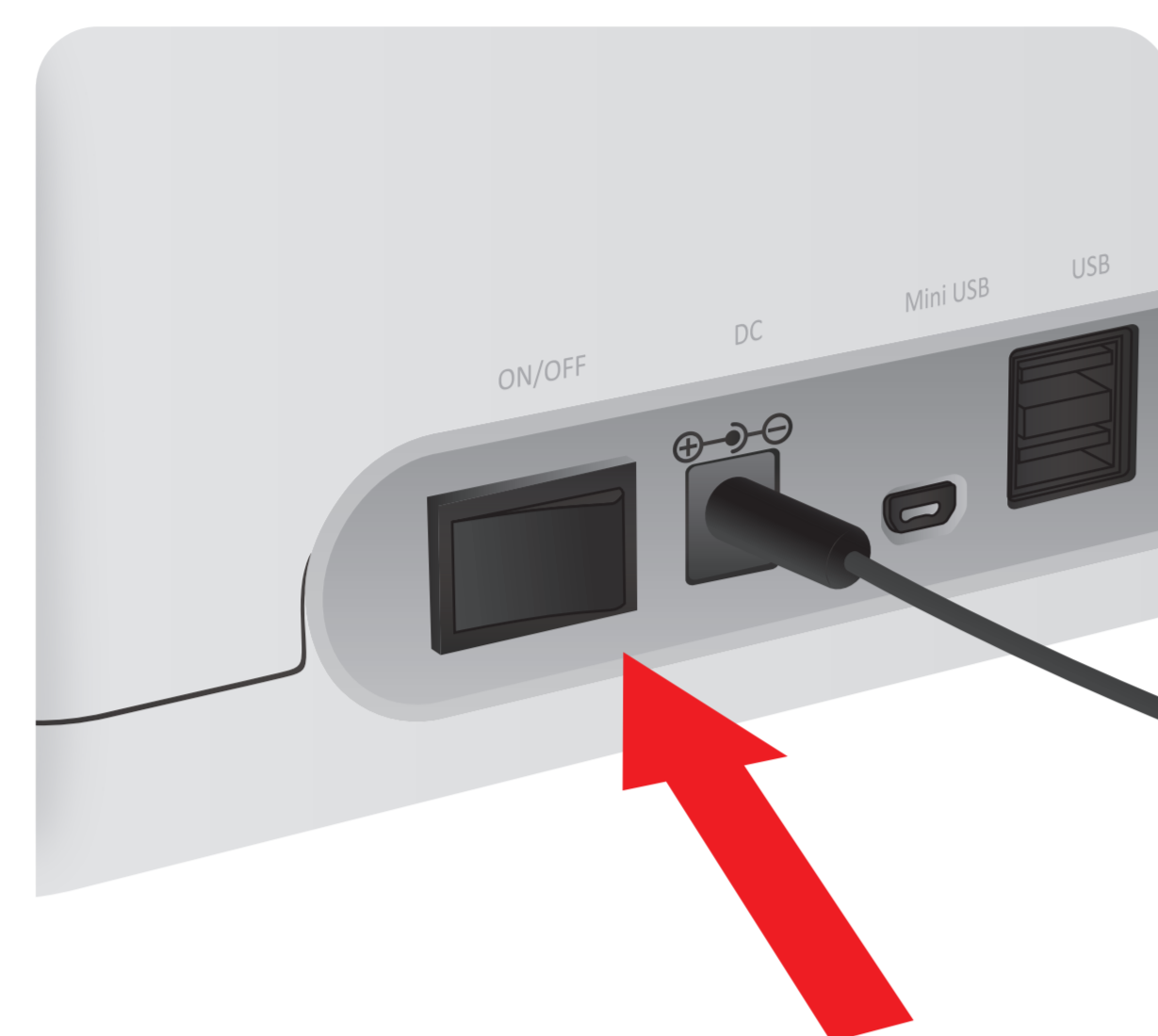
iCHROMA-II Reader



Important

- Allow 'Detection Buffer Tube' to attain room temperature at least for 30 minutes before performing the test
- Make sure that lot number of the 'ID Chip' is exactly same as the lot number of 'Test Cartridge' and 'Detection Buffer Tube'

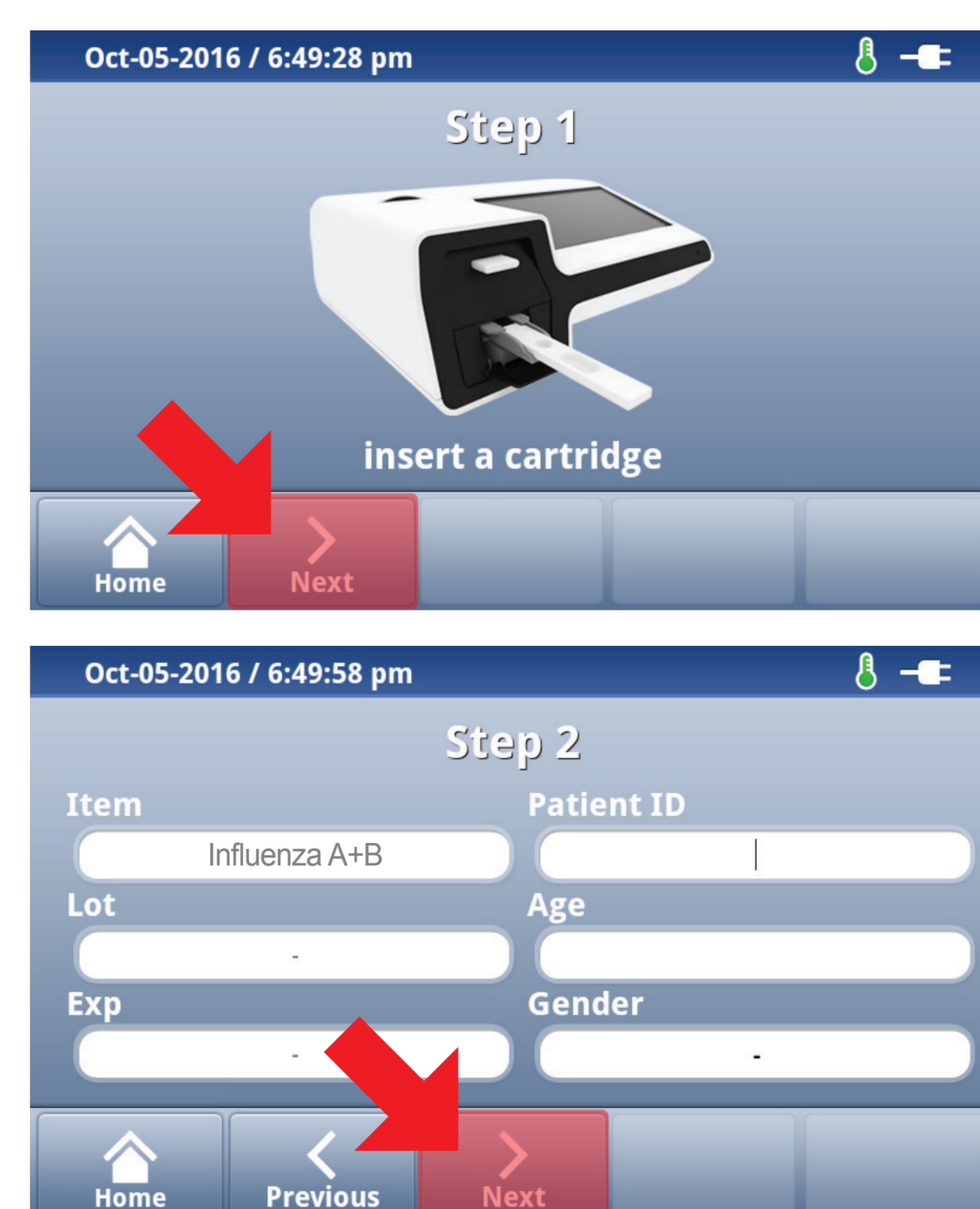
1 Turn the power switch 'On'



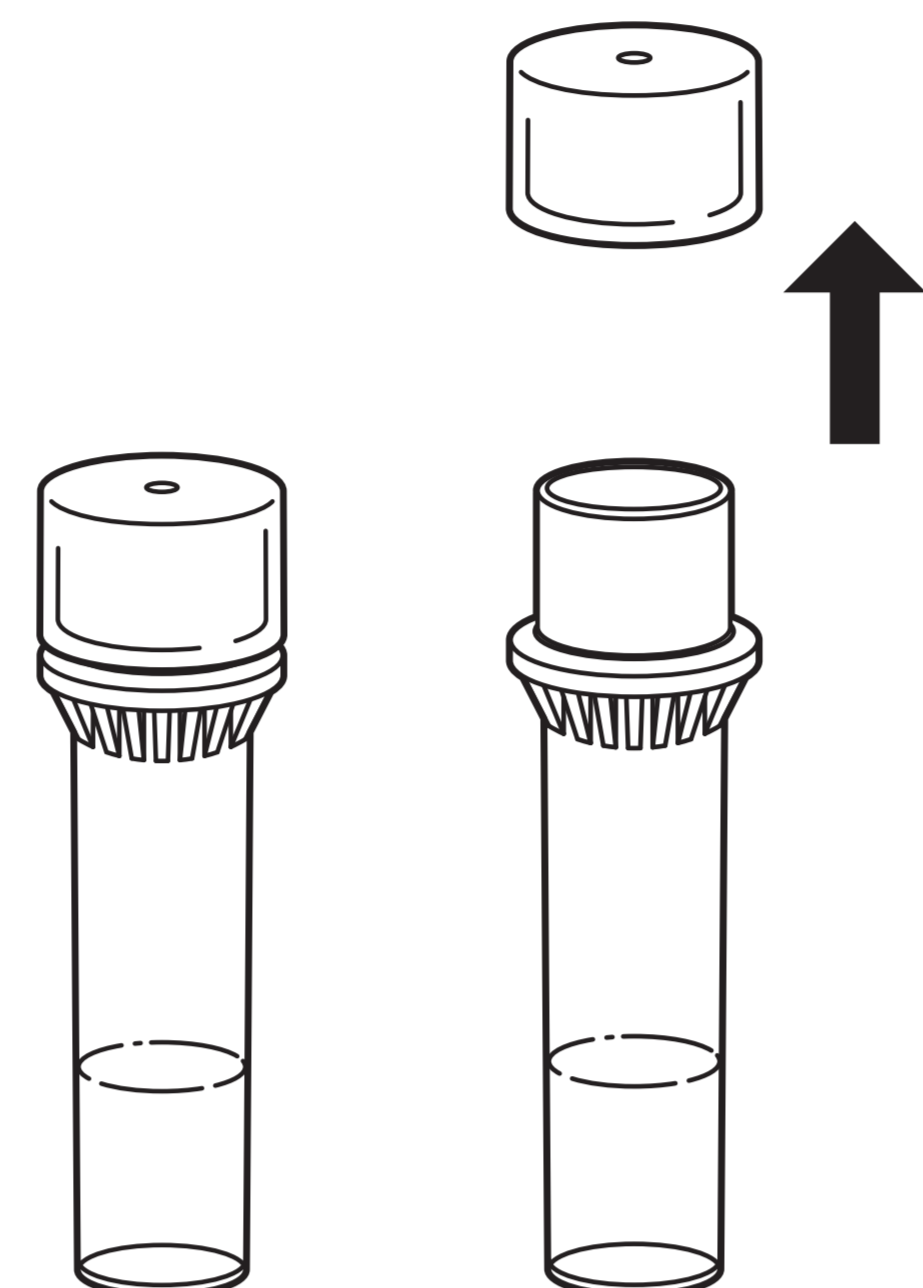
2 Insert ID Chip



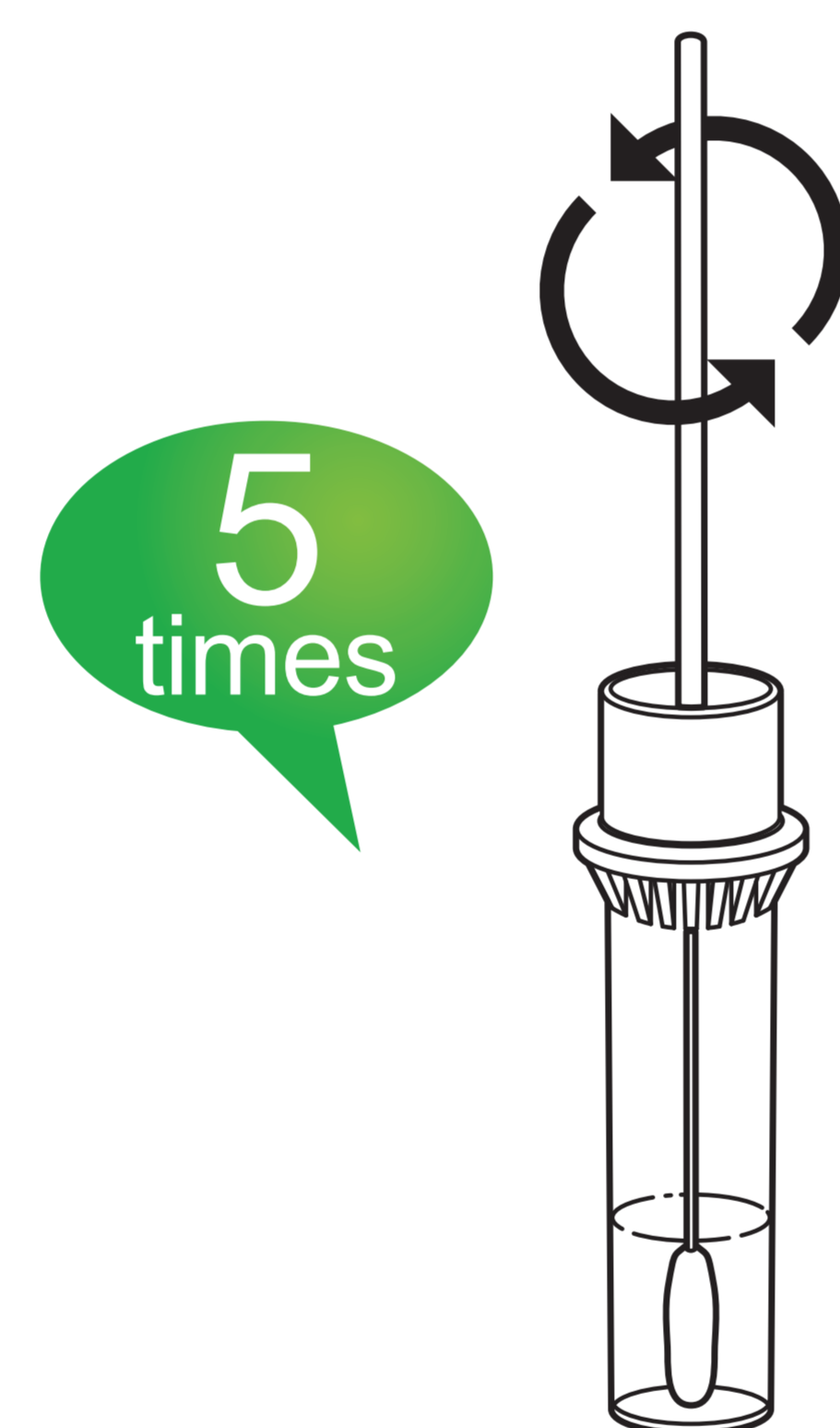
3 Press 'Select'



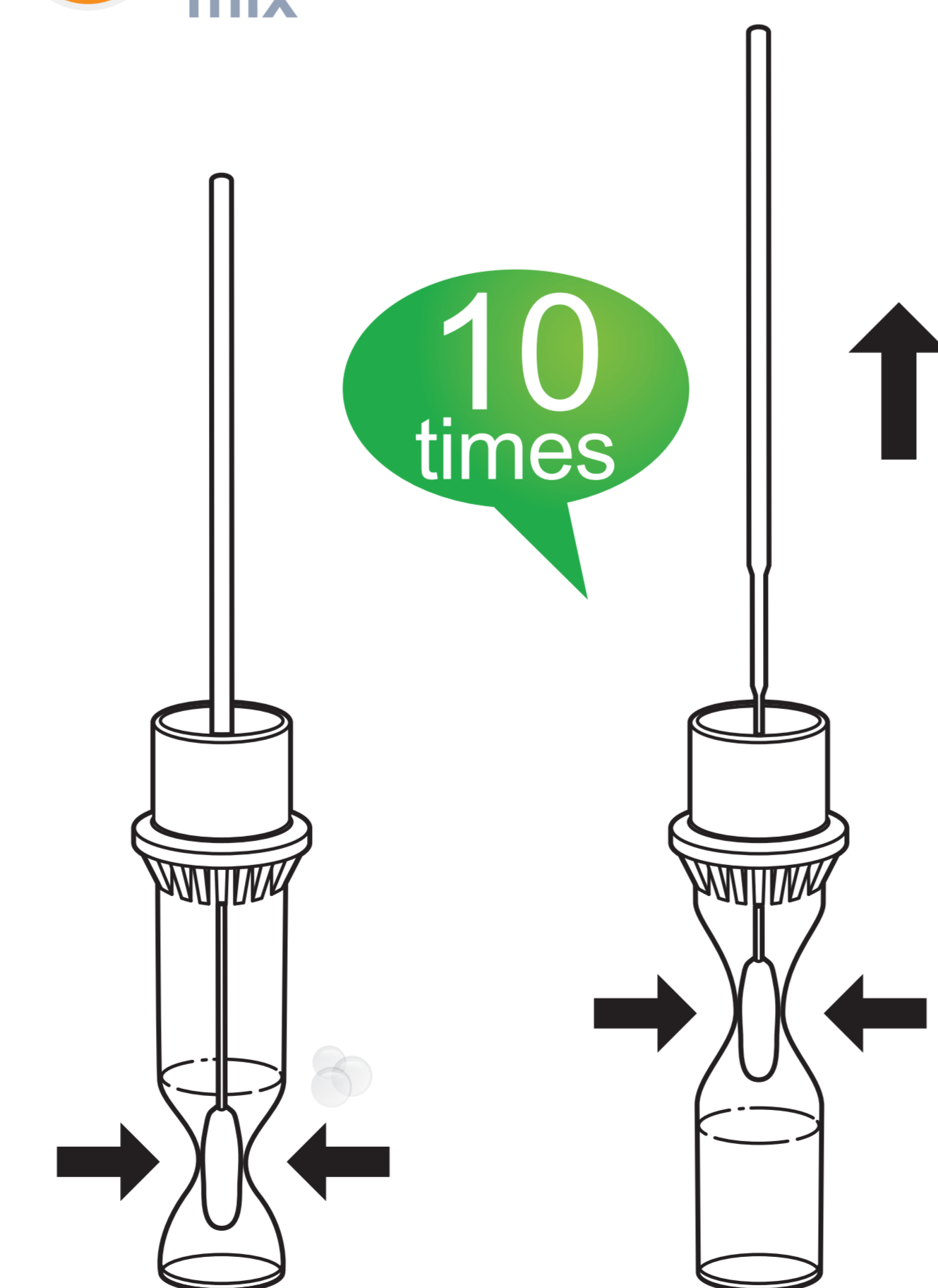
1 Open the extraction buffer tube.



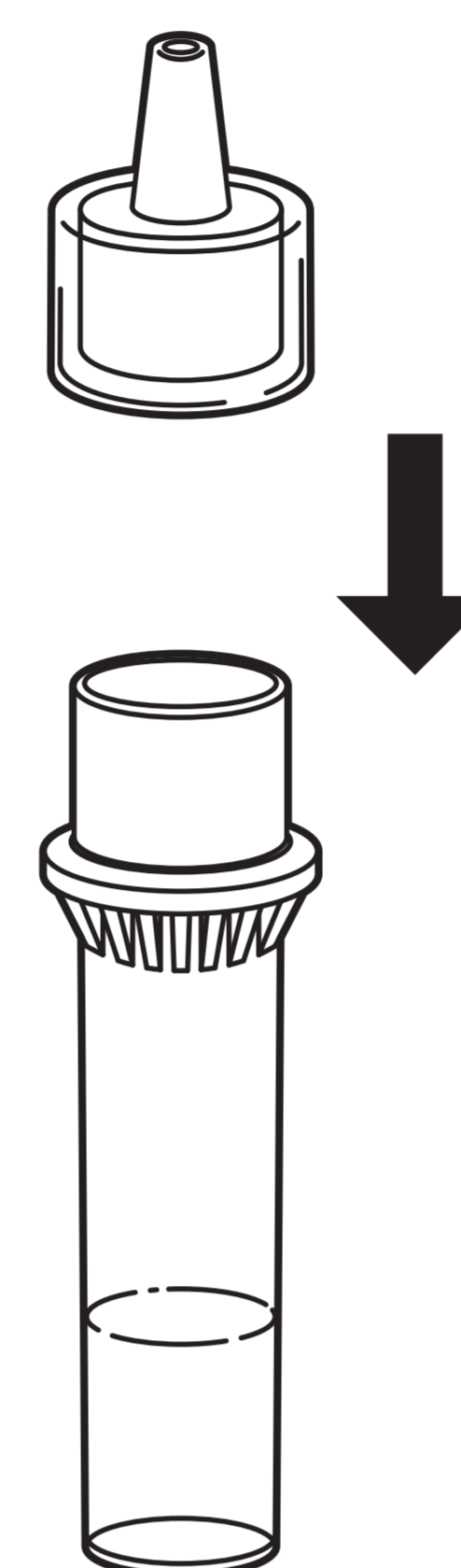
2 Collect samples with a sterile swab and then put it into the extraction tube (Spin 5 times)



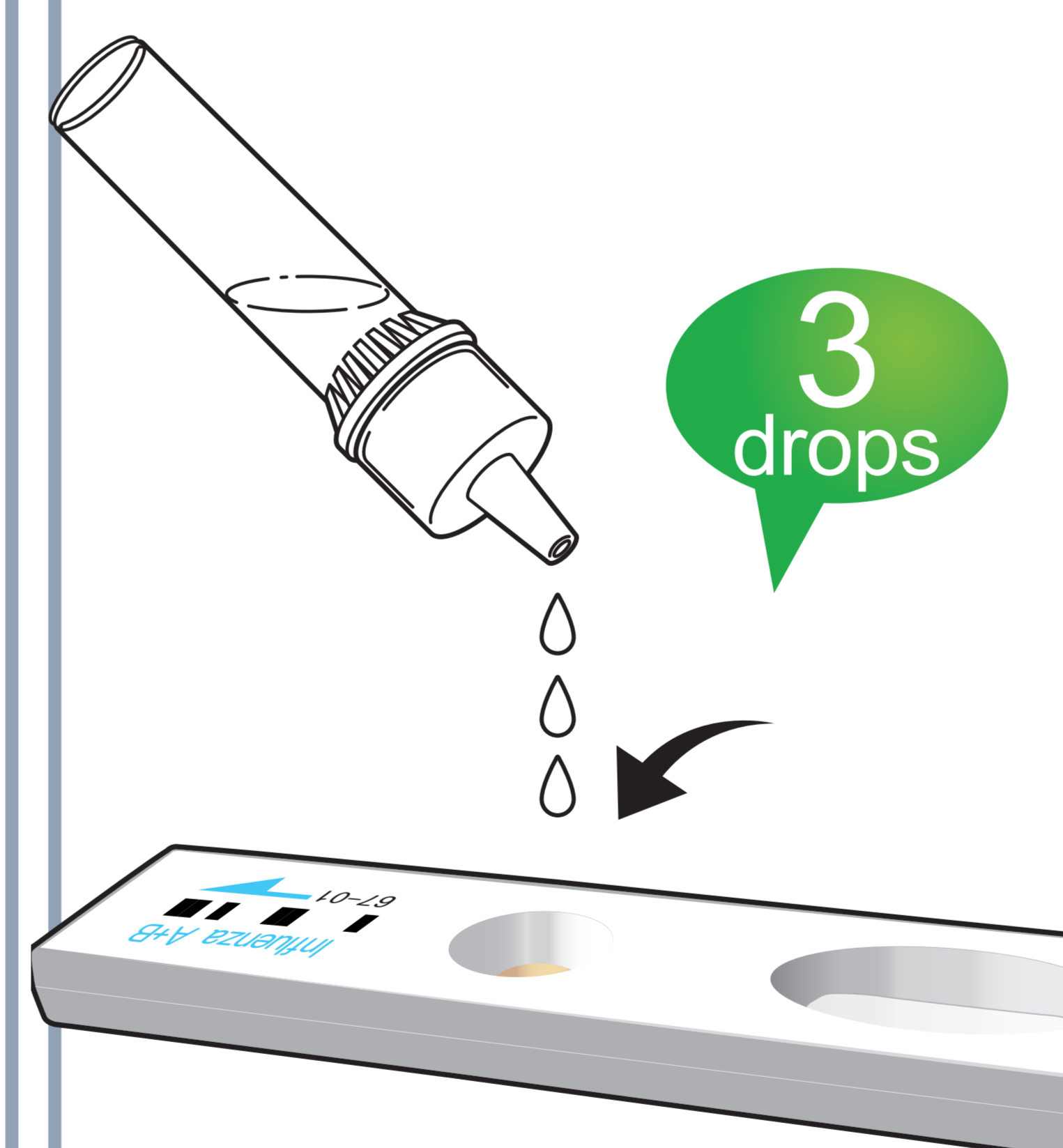
3 Squeeze and shake to mix



4 Assemble a nozzle to the extraction tube.

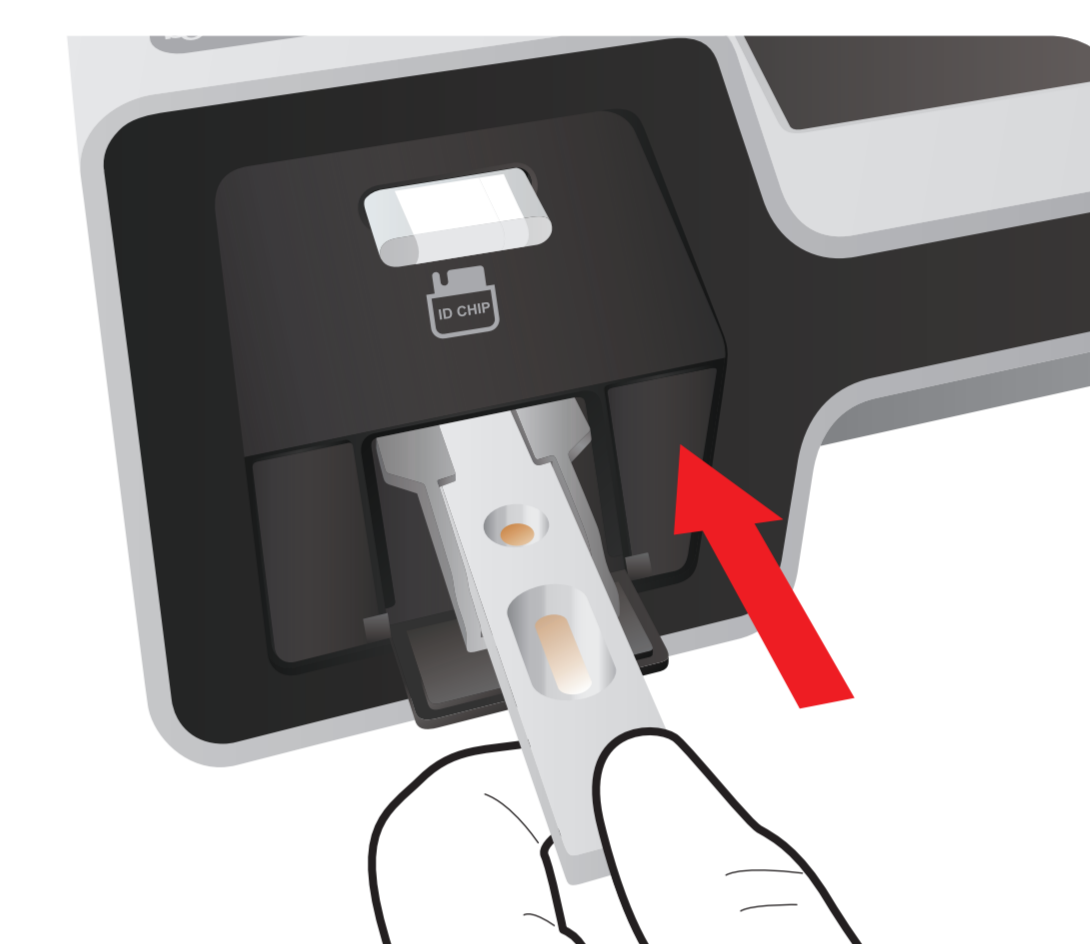


5 Load 3 drops of sample mixture onto the sample well on a cartridge

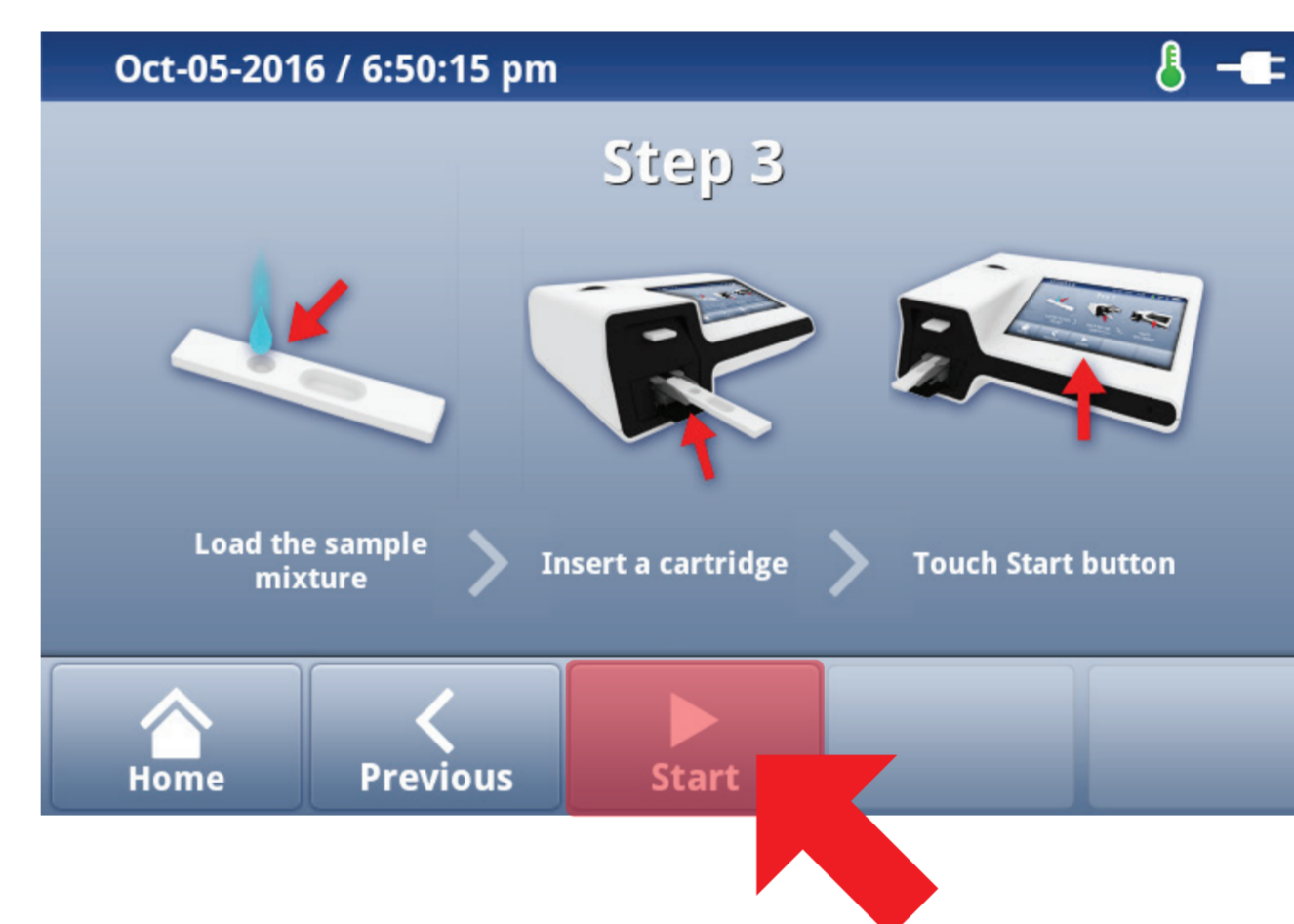


Single mode

6 Insert the test cartridge



7 Press 'Start'



8 Waiting 10 minutes



9 Read the test result

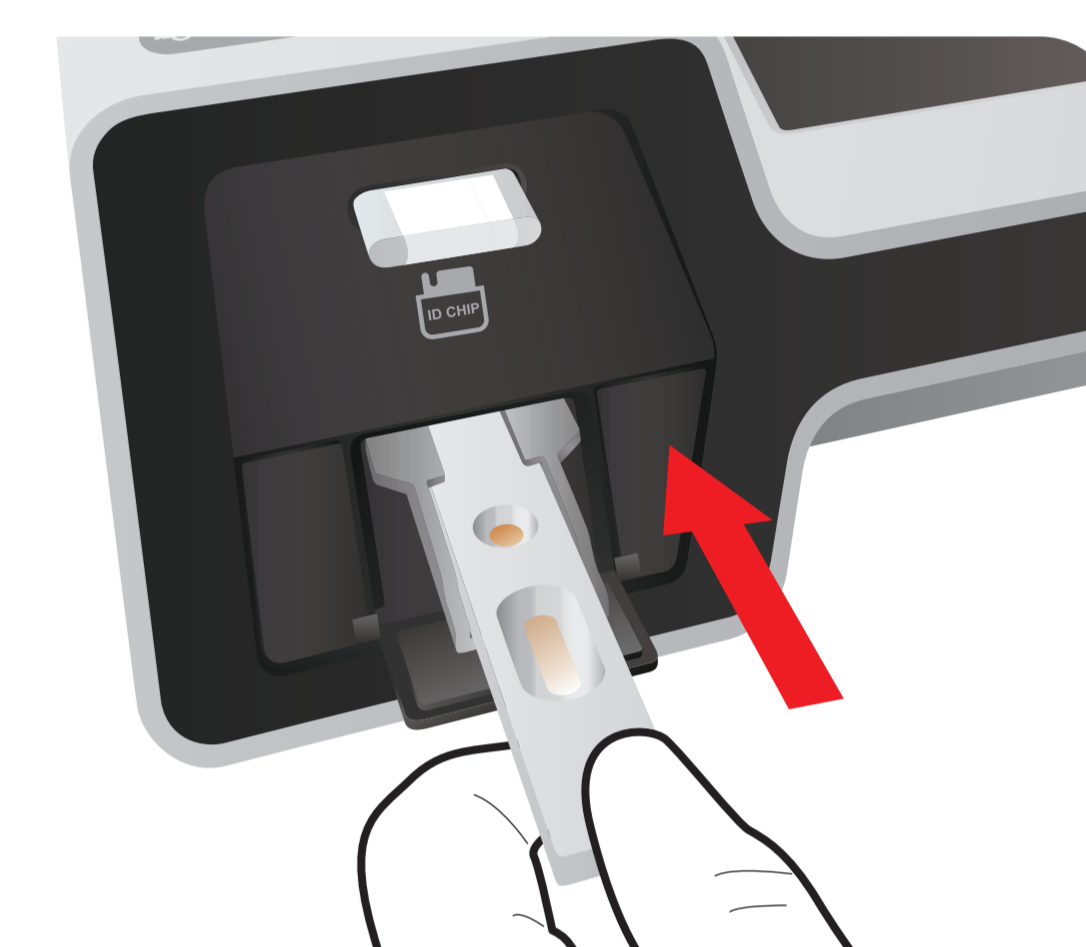


Multi mode

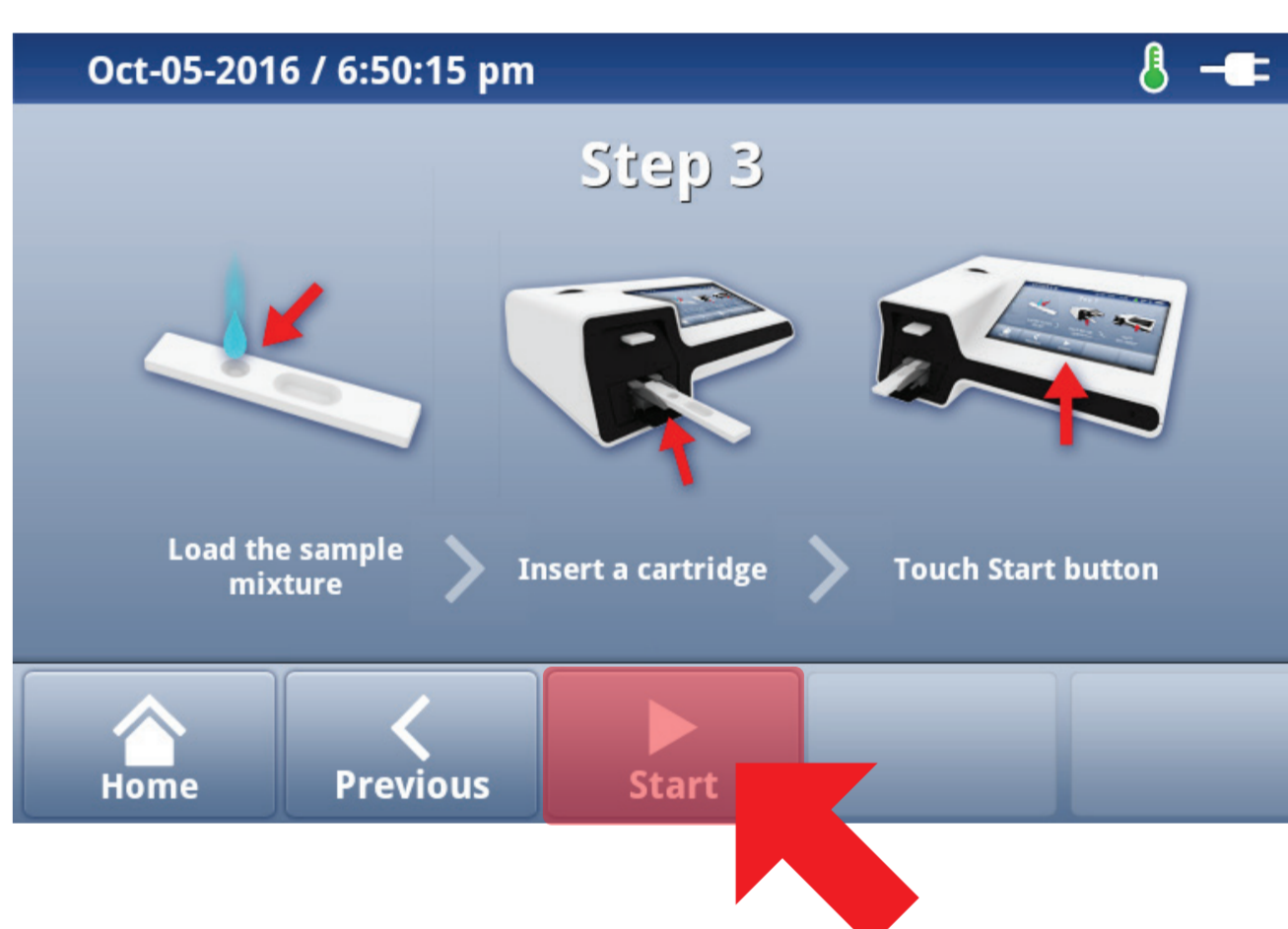
6 Waiting 10 minutes



7 Insert the test cartridge



8 Press 'Start'



9 Read the test result

