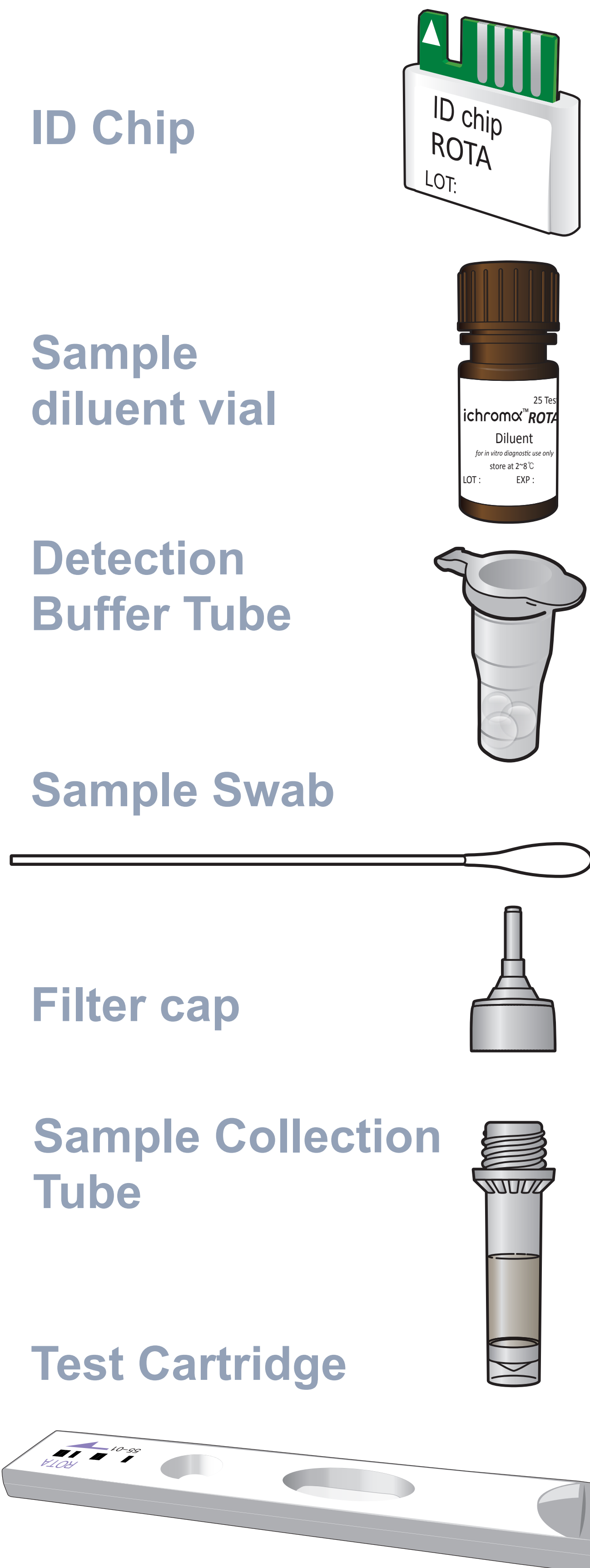


## Test Setup

### Test Components



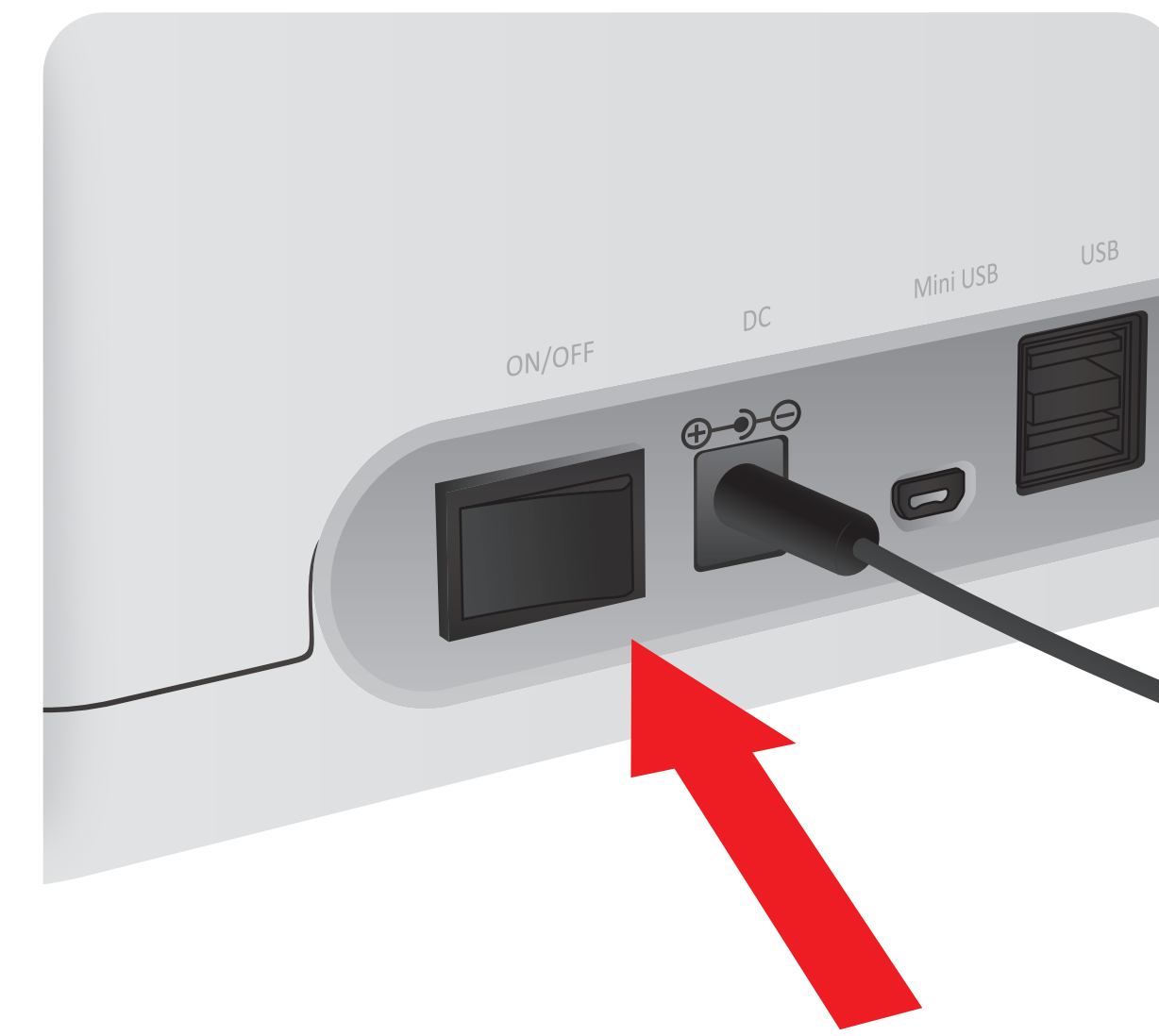
### iCHROMA-II Reader



### Important

- Allow 'Detection Buffer Tube' to attain room temperature at least for 30 minutes before performing the test
- Make sure that lot number of the 'ID Chip' is exactly same as the lot number of 'Test Cartridge' and 'Detection Buffer Tube'

### 1 Turn the power switch 'On'



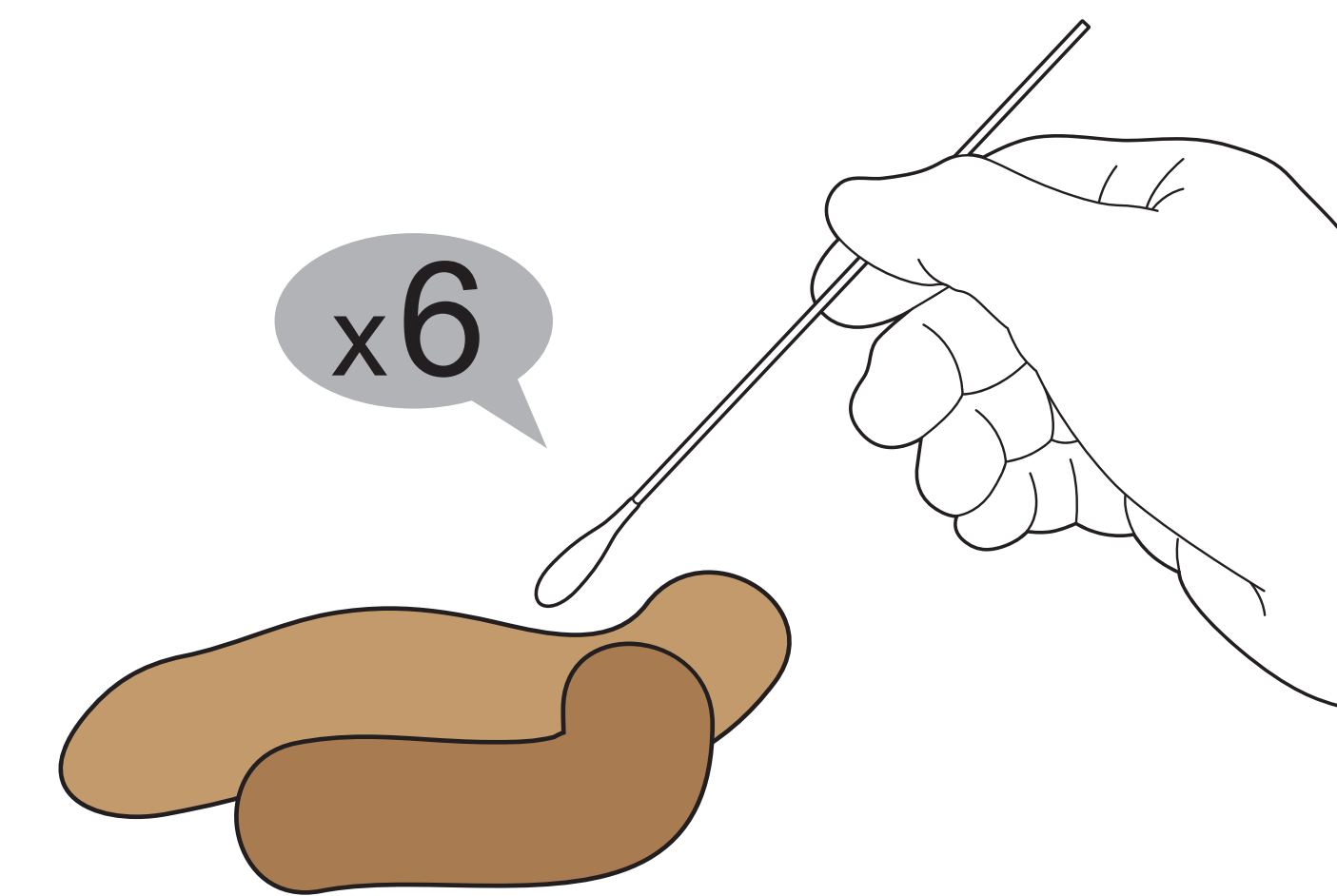
### 2 Insert ID Chip



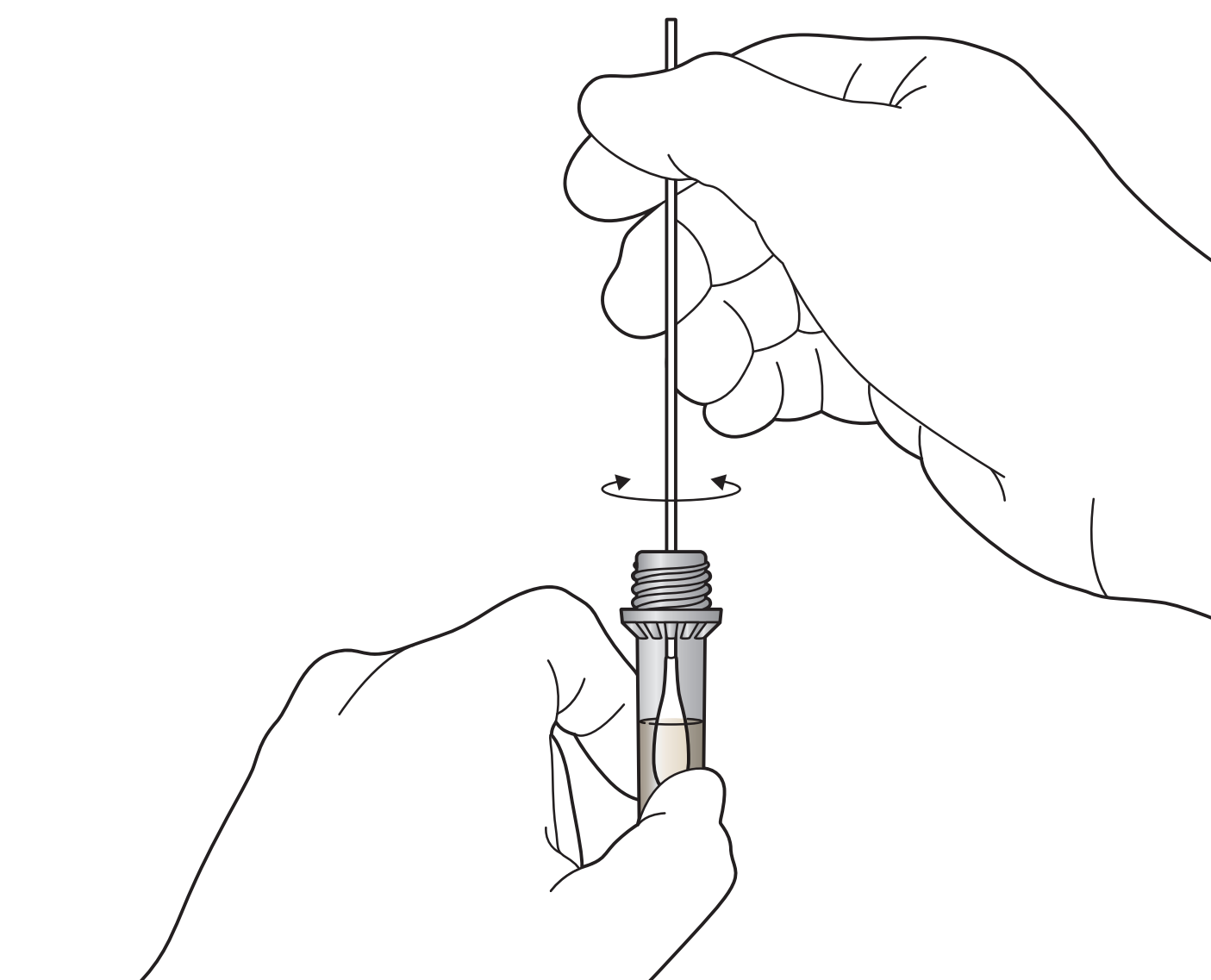
### 3 Press 'Select'



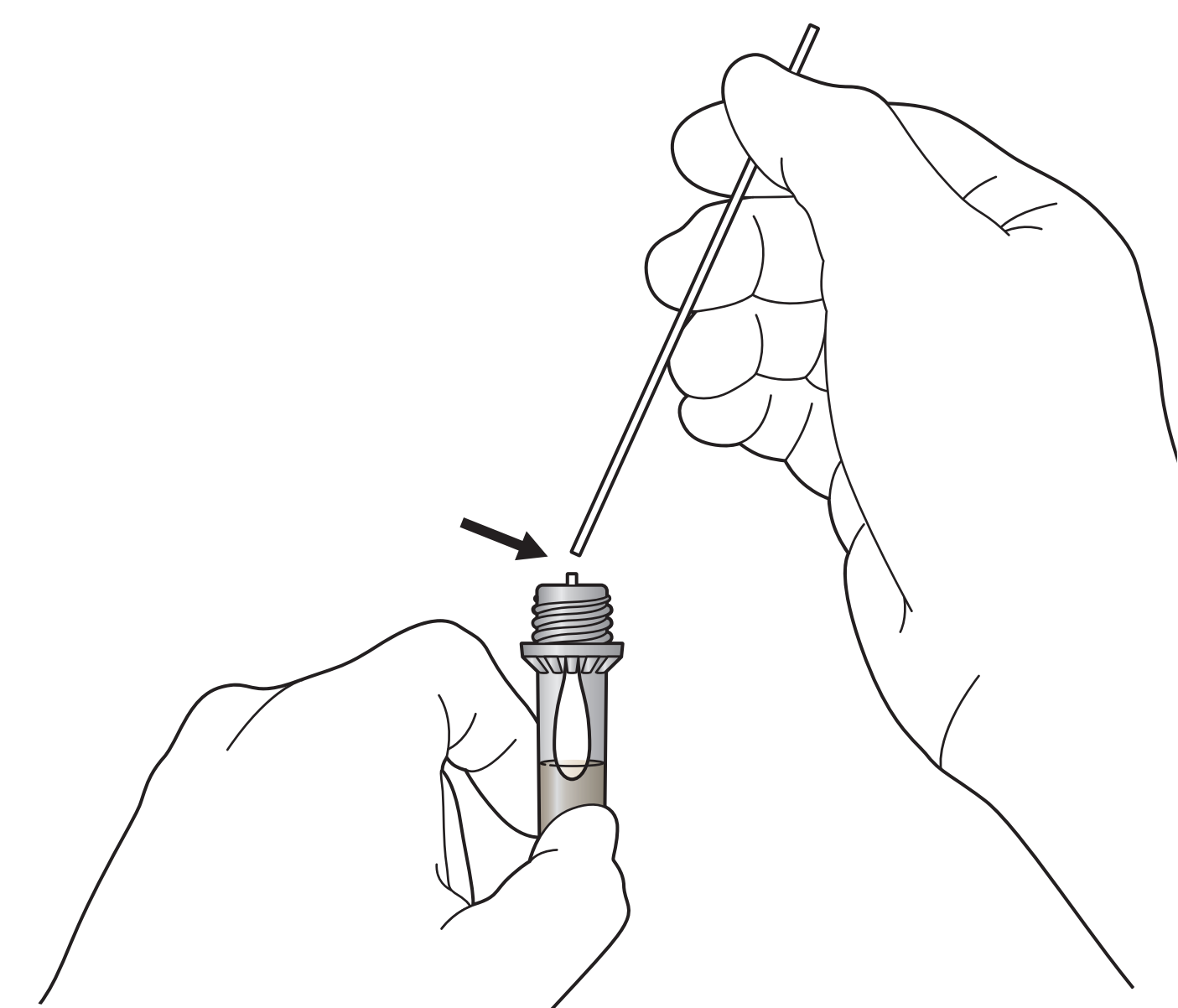
### 1 Put a sample swab into the fecal sample about 5-6 times at different sites and try to avoid obtaining clumps of feces



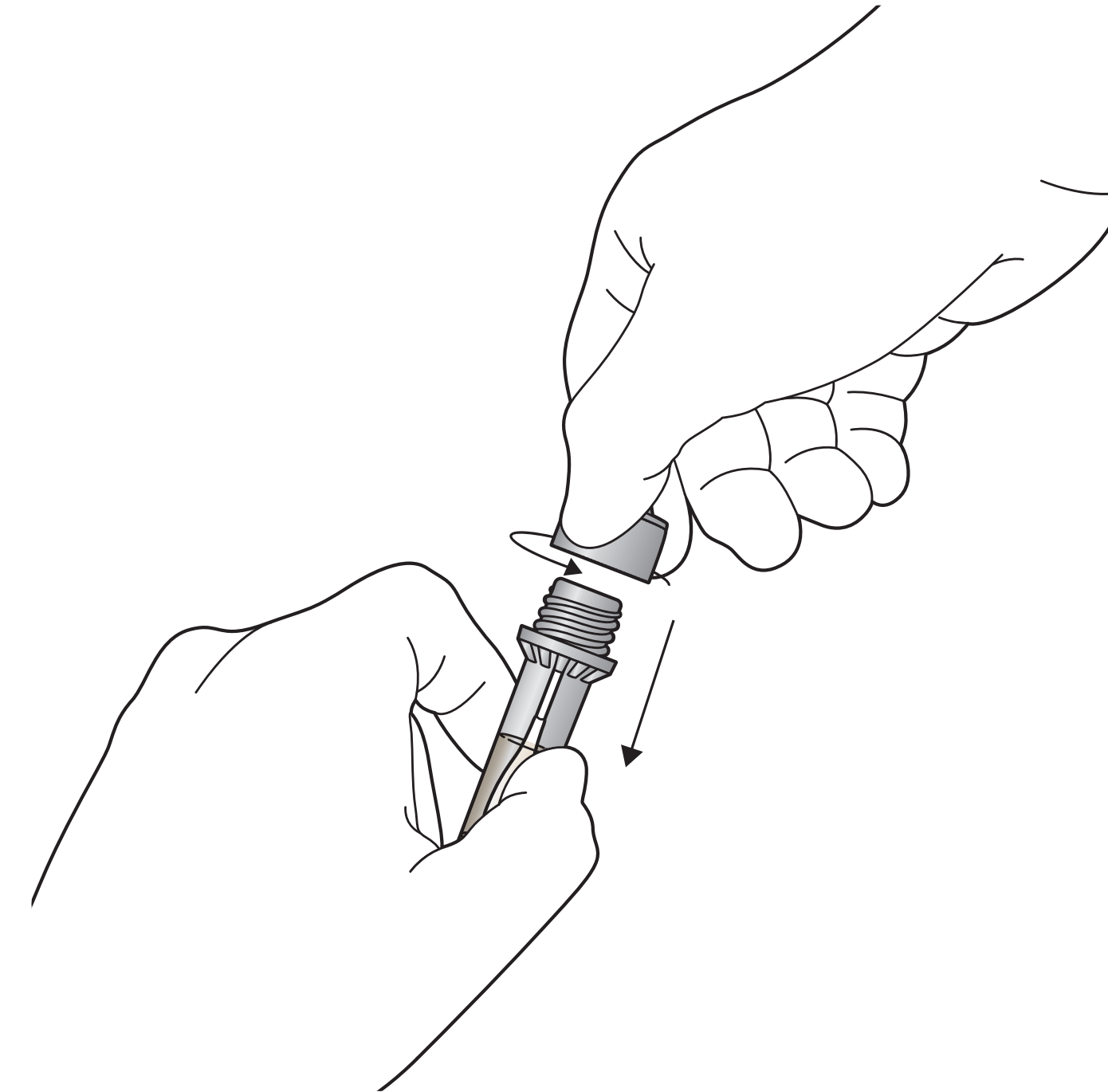
### 2 Insert the sample swab into the sample collection tube and swirl the sample swab at least 10 times.



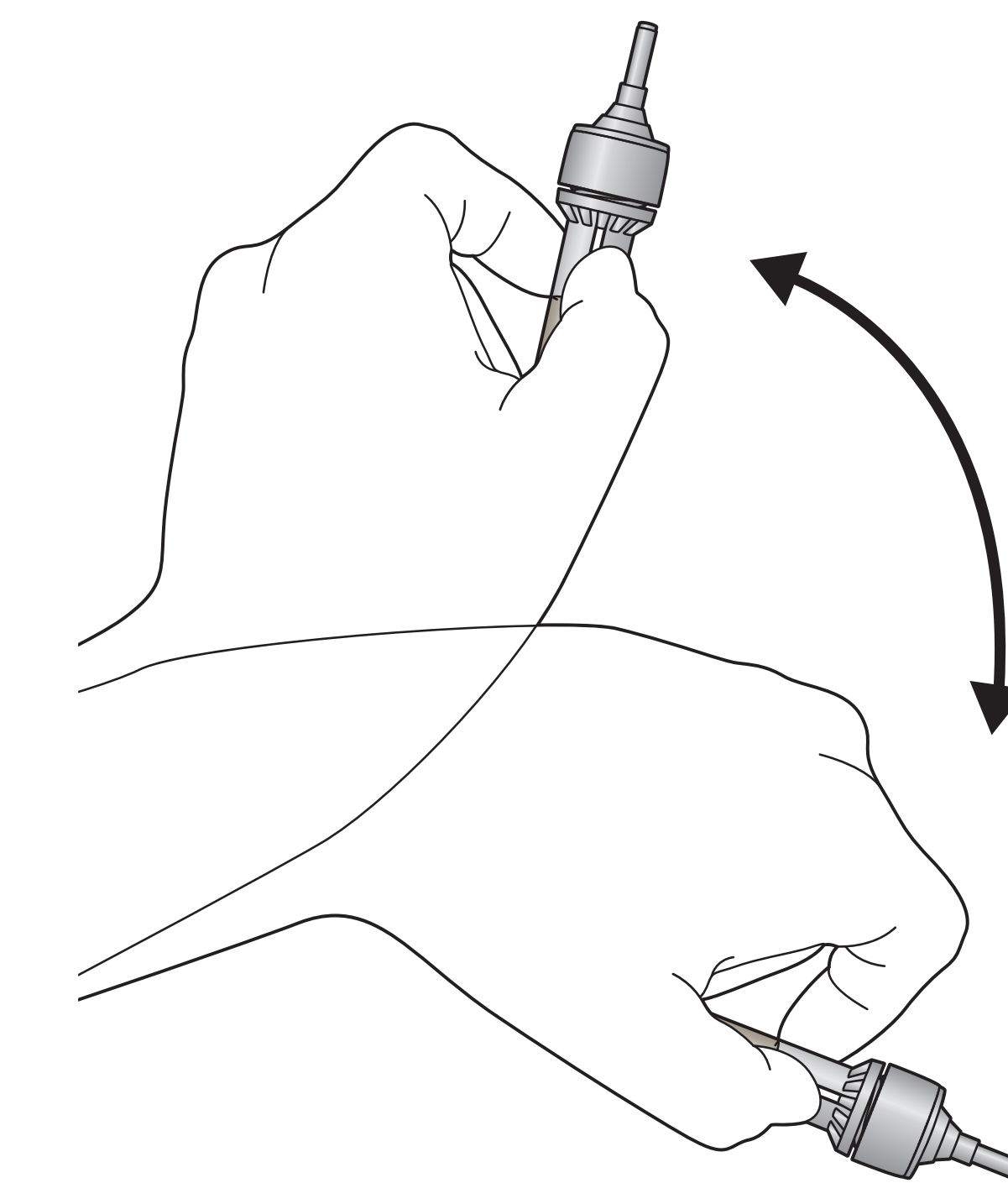
### 3 Break the sample swab and remove top portion of sample swab.



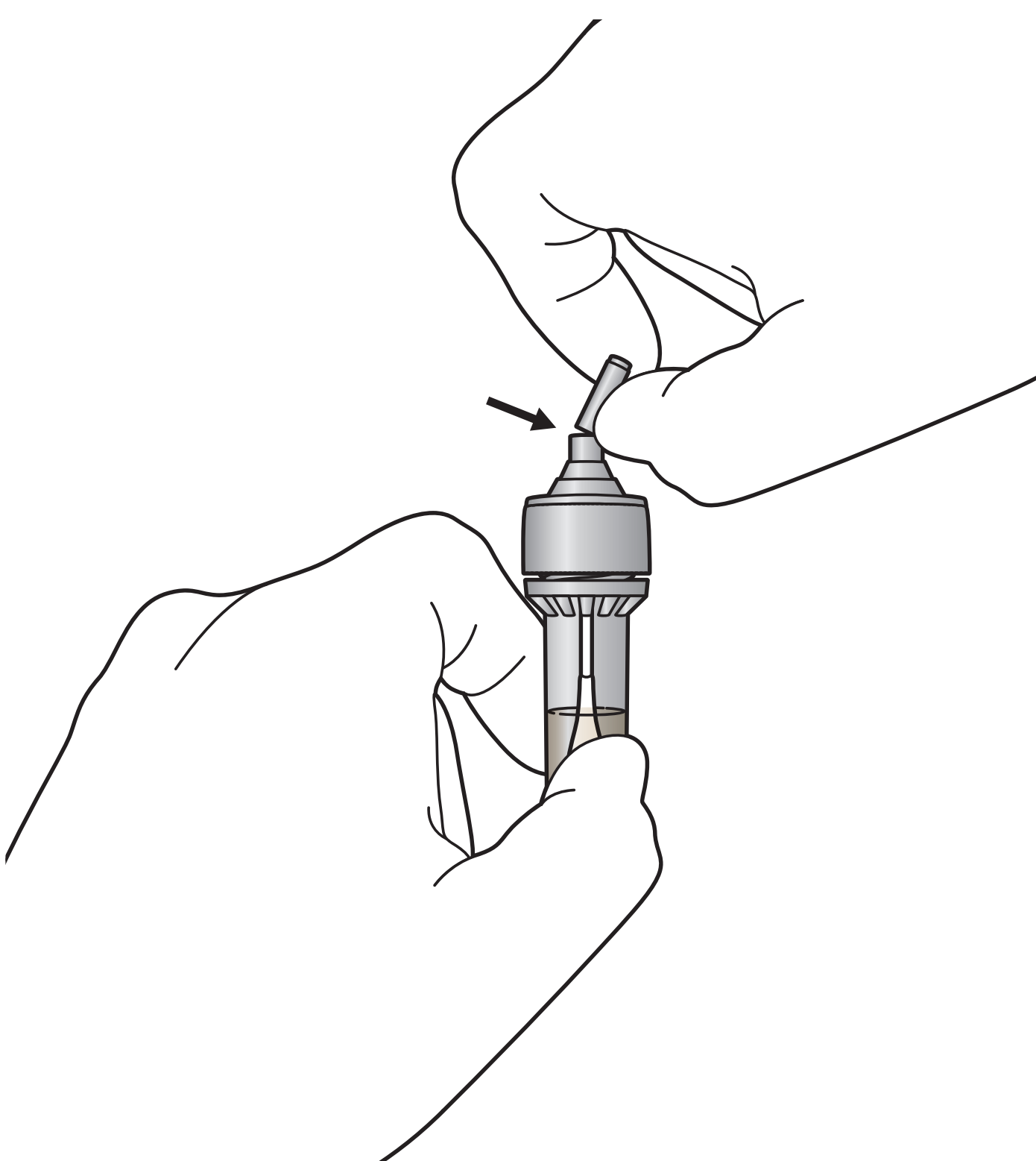
### 4 Assemble filter cap.



### 5 Mix the sample by shaking it 5-10 times

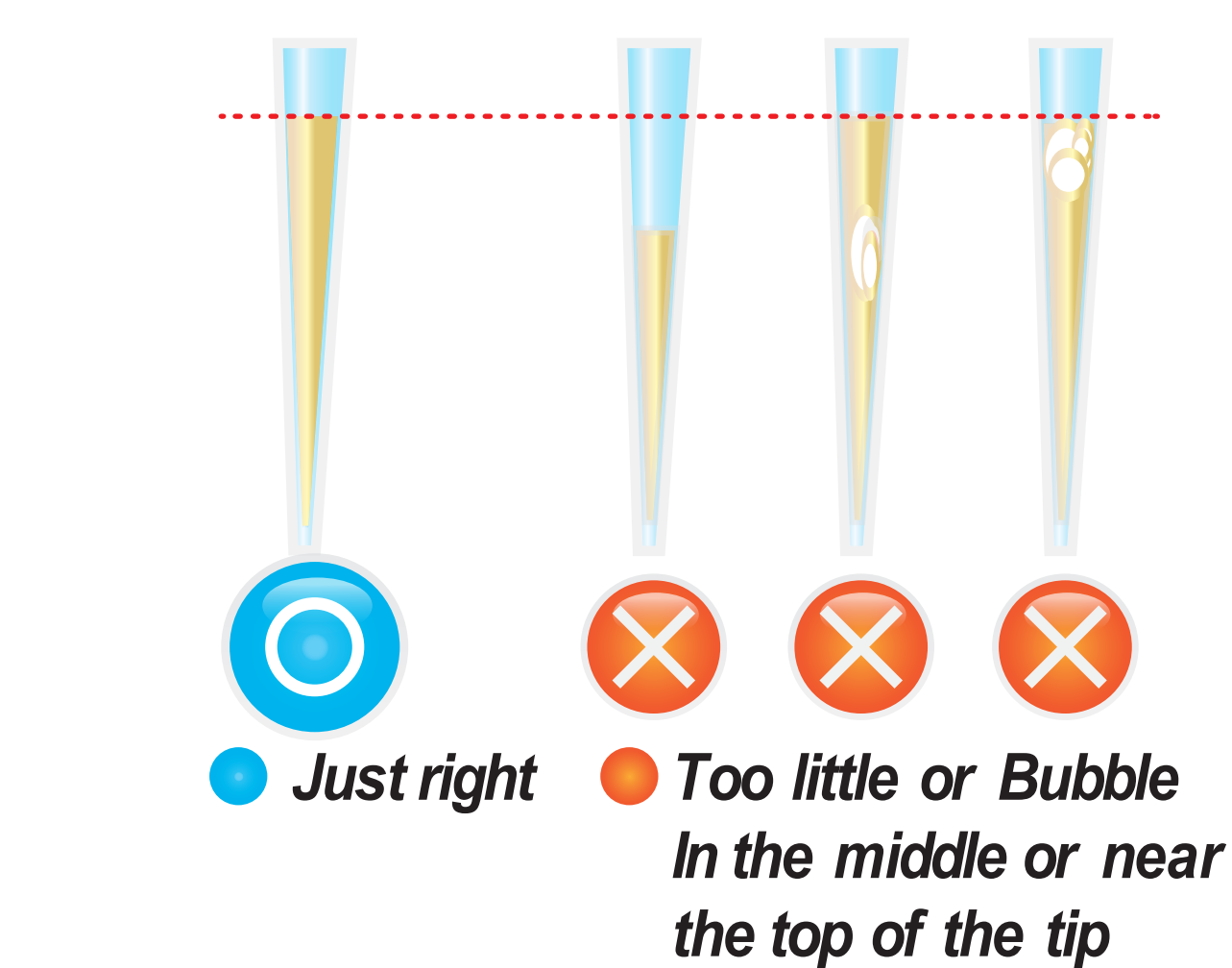


### 6 Break the break point of filter cap



## Test Procedure

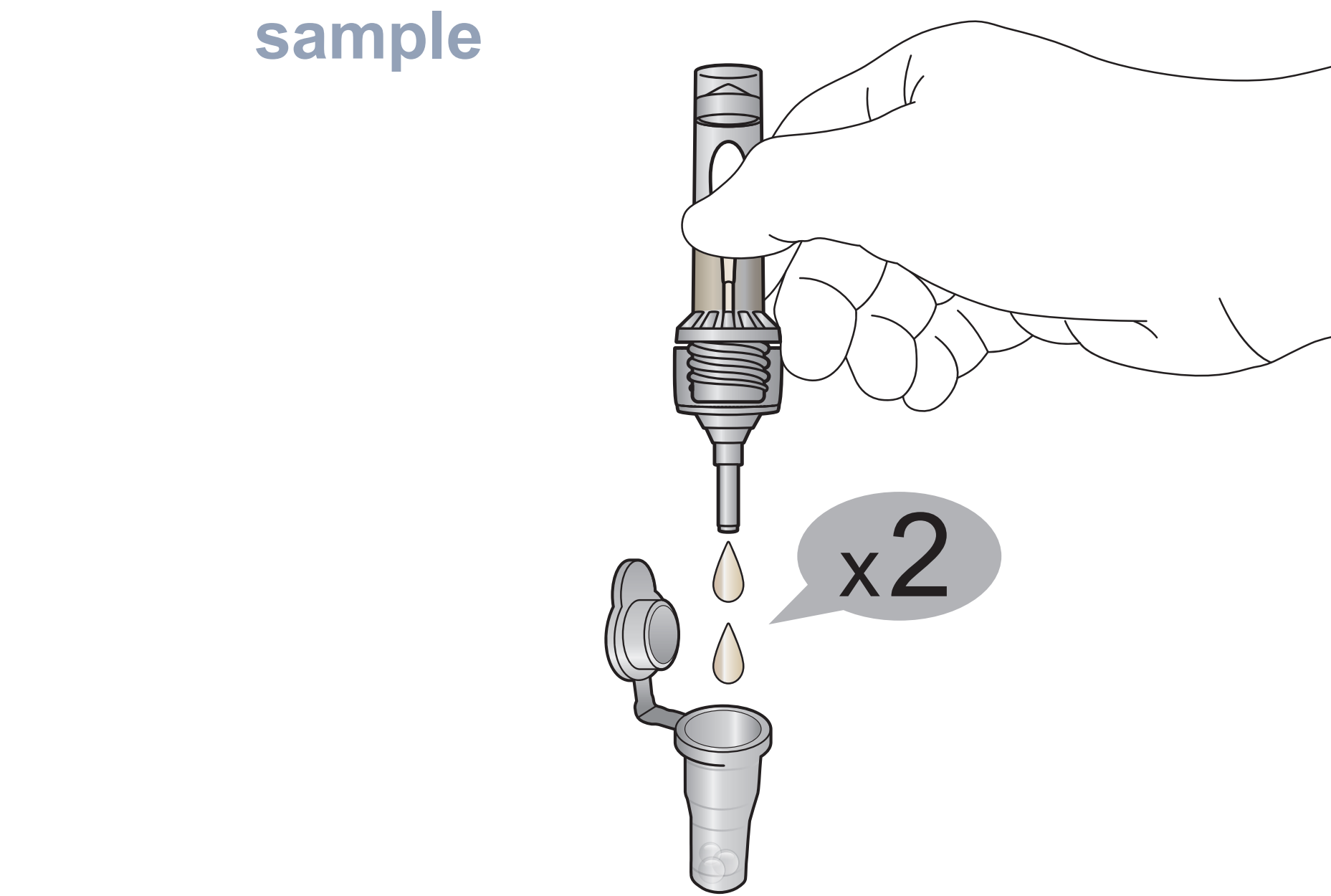
### 7 Draw the diluent from diluent vial 150 µL



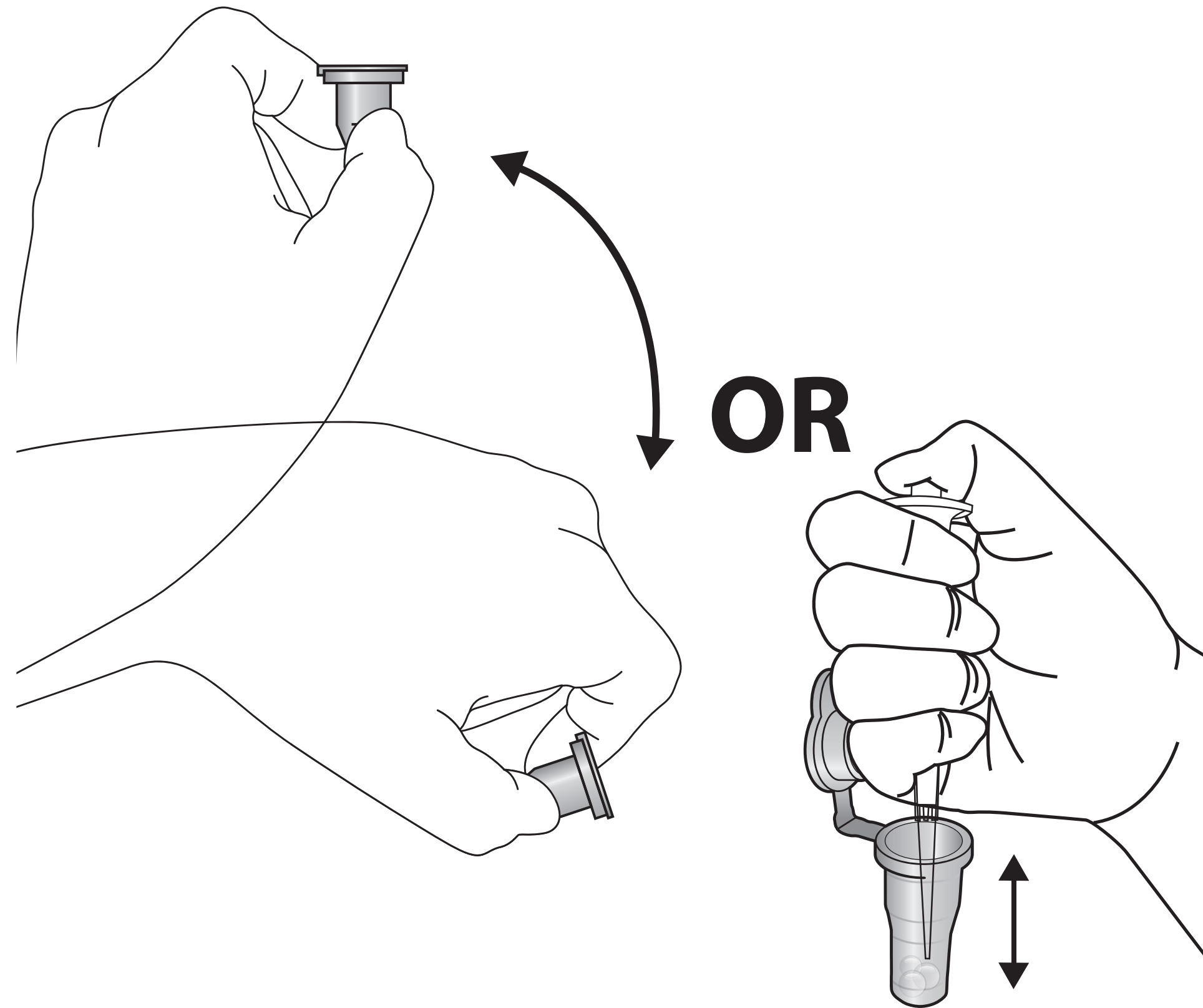
### 8 Add it into detection buffer tube



### 9 Transfer only 2 drops (about 30 µL) of feces sample



### 10 Mix well by pipetting 10-20 times. (The sample mixture must be used immediately).



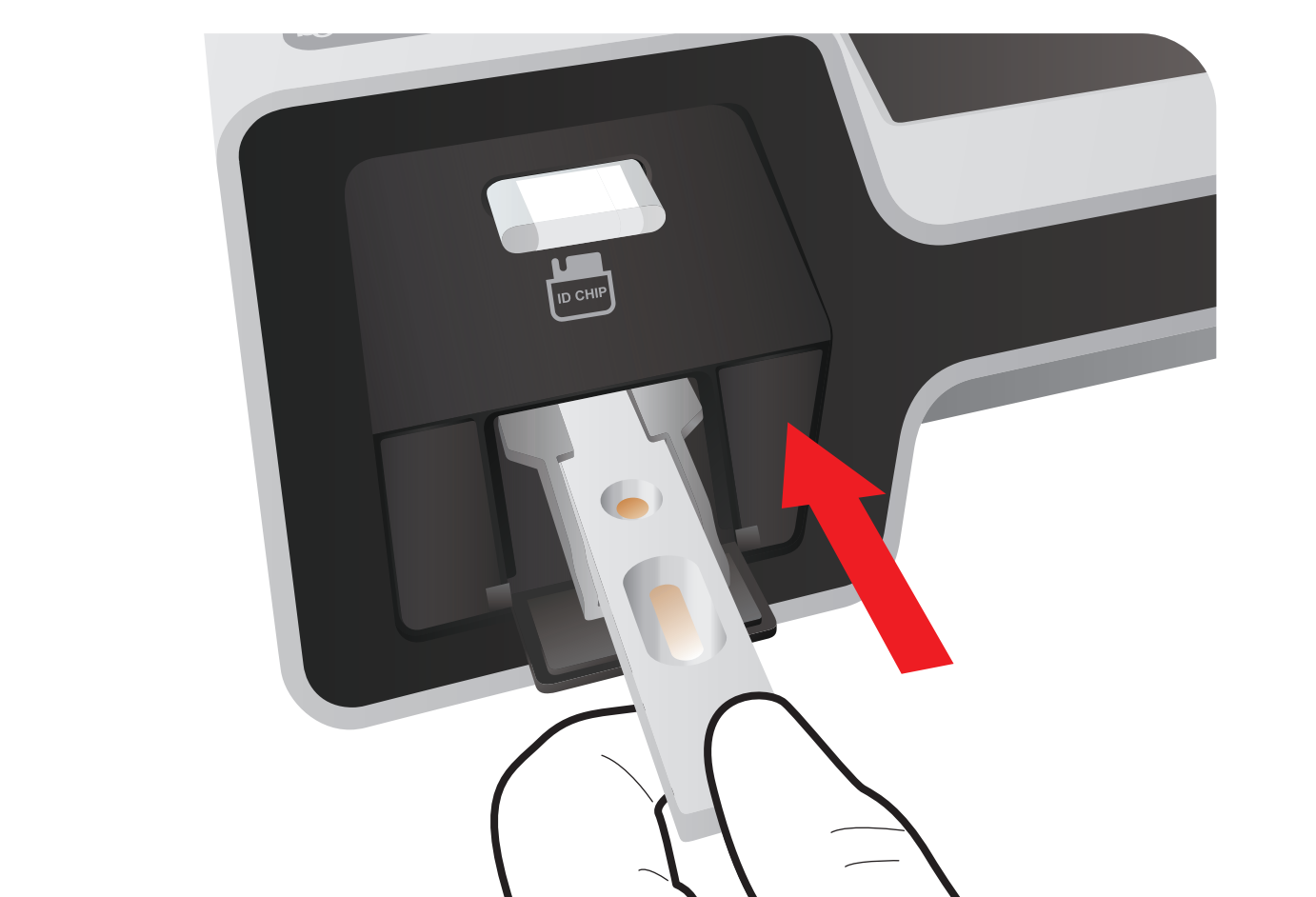
### 11 Load the sample Mixture



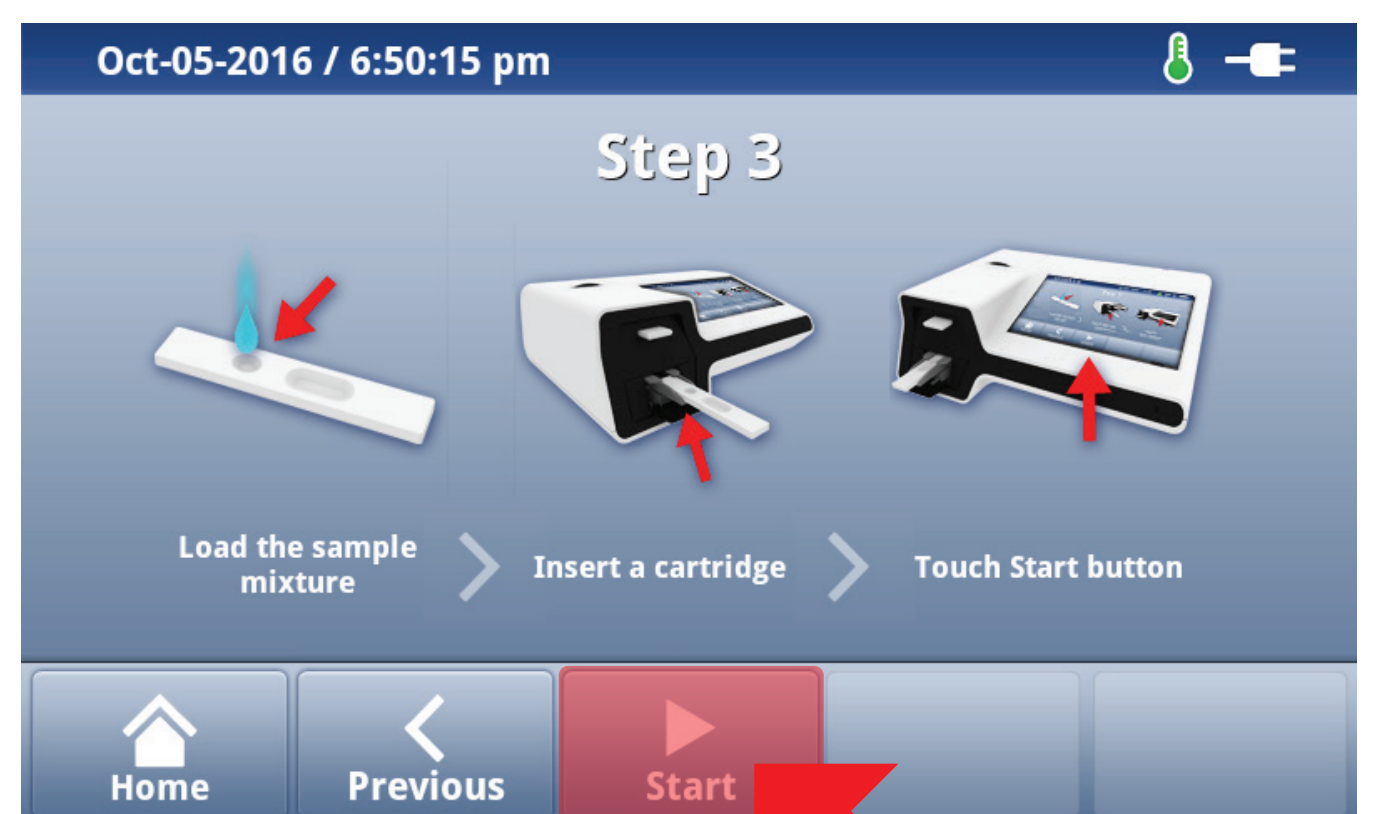
### 12 Waiting 12 minutes



### 13 Insert the test cartridge



### 14 Press 'Select'



### 15 Read the test result

