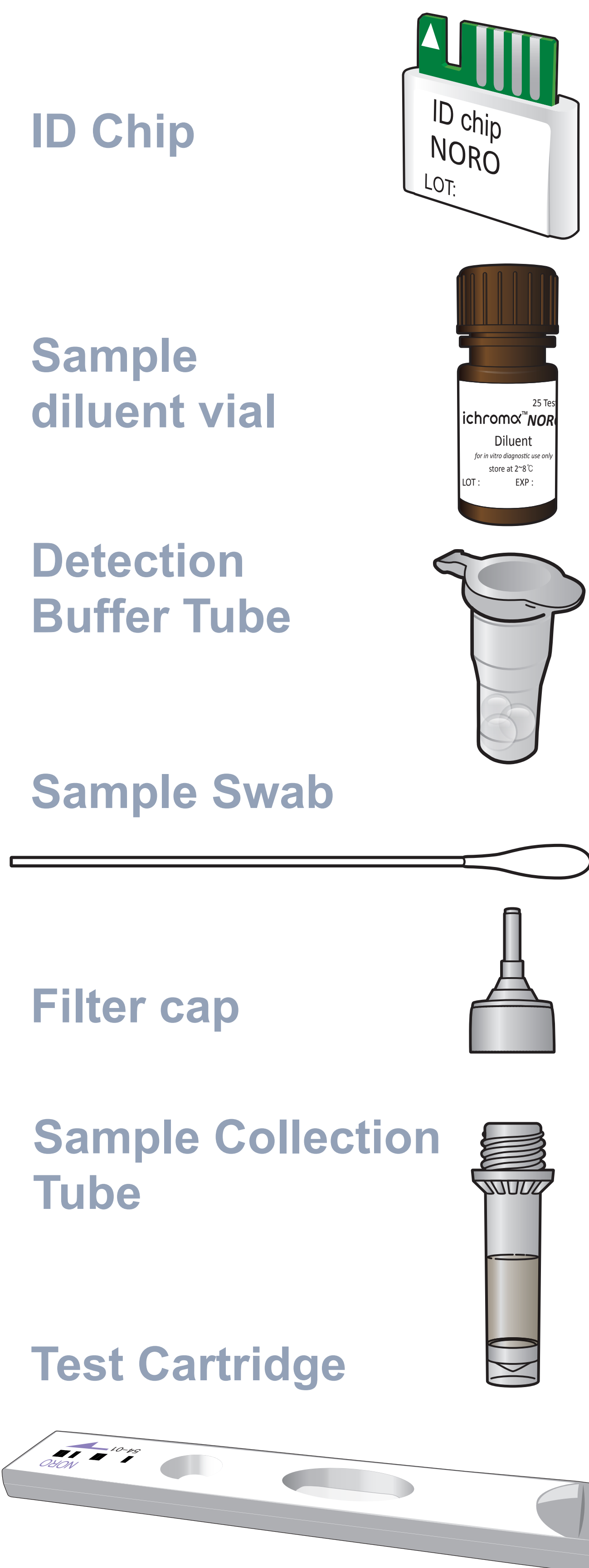


Test Setup

Test Components



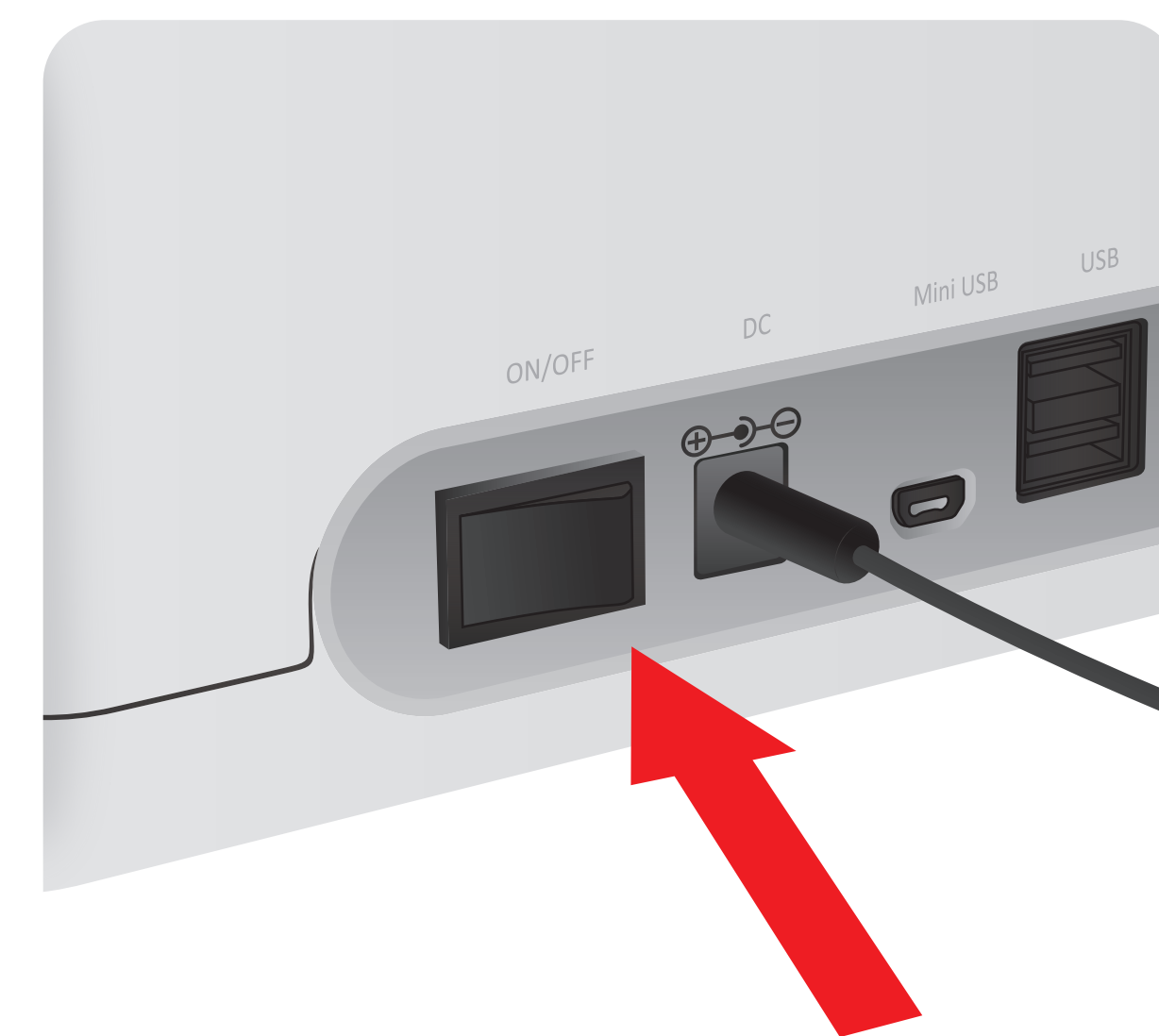
iCHROMA II Reader



Important

- Allow 'Detection Buffer Tube' to attain room temperature at least for 30 minutes before performing the test
- Make sure that lot number of the 'ID Chip' is exactly same as the lot number of 'Test Cartridge' and 'Detection Buffer Tube'

1 Turn the power switch 'On'



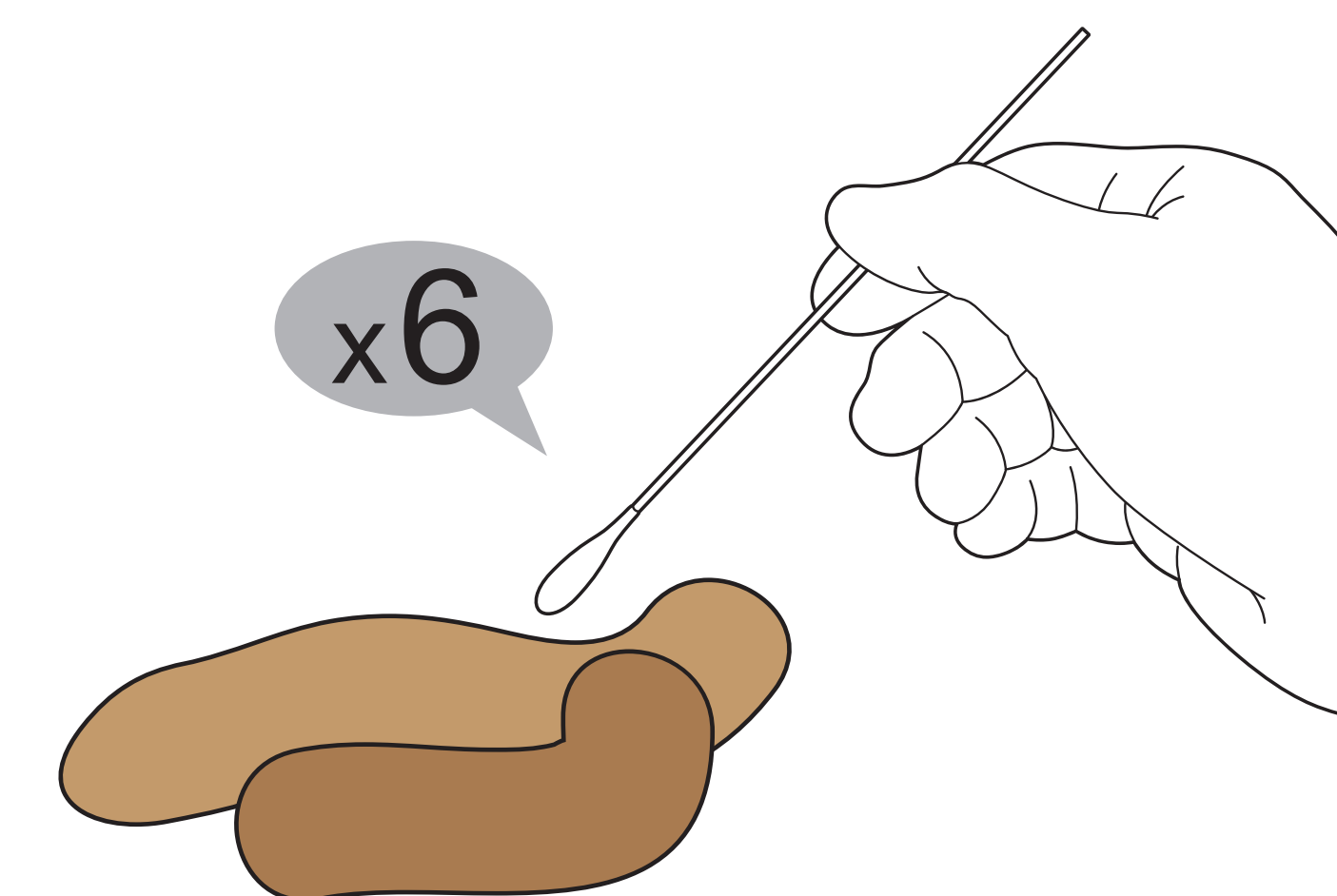
2 Insert ID Chip



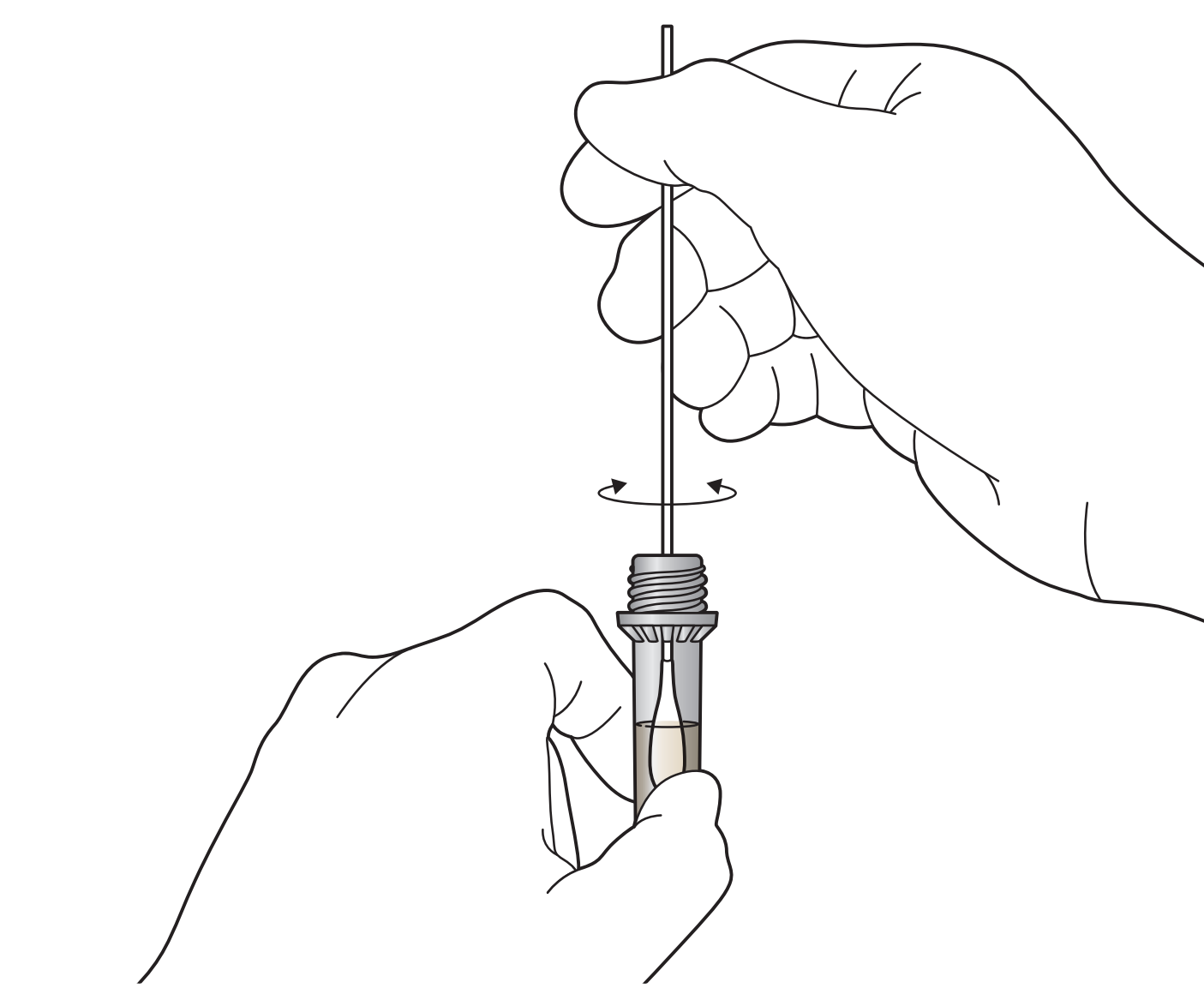
3 Press 'Select'



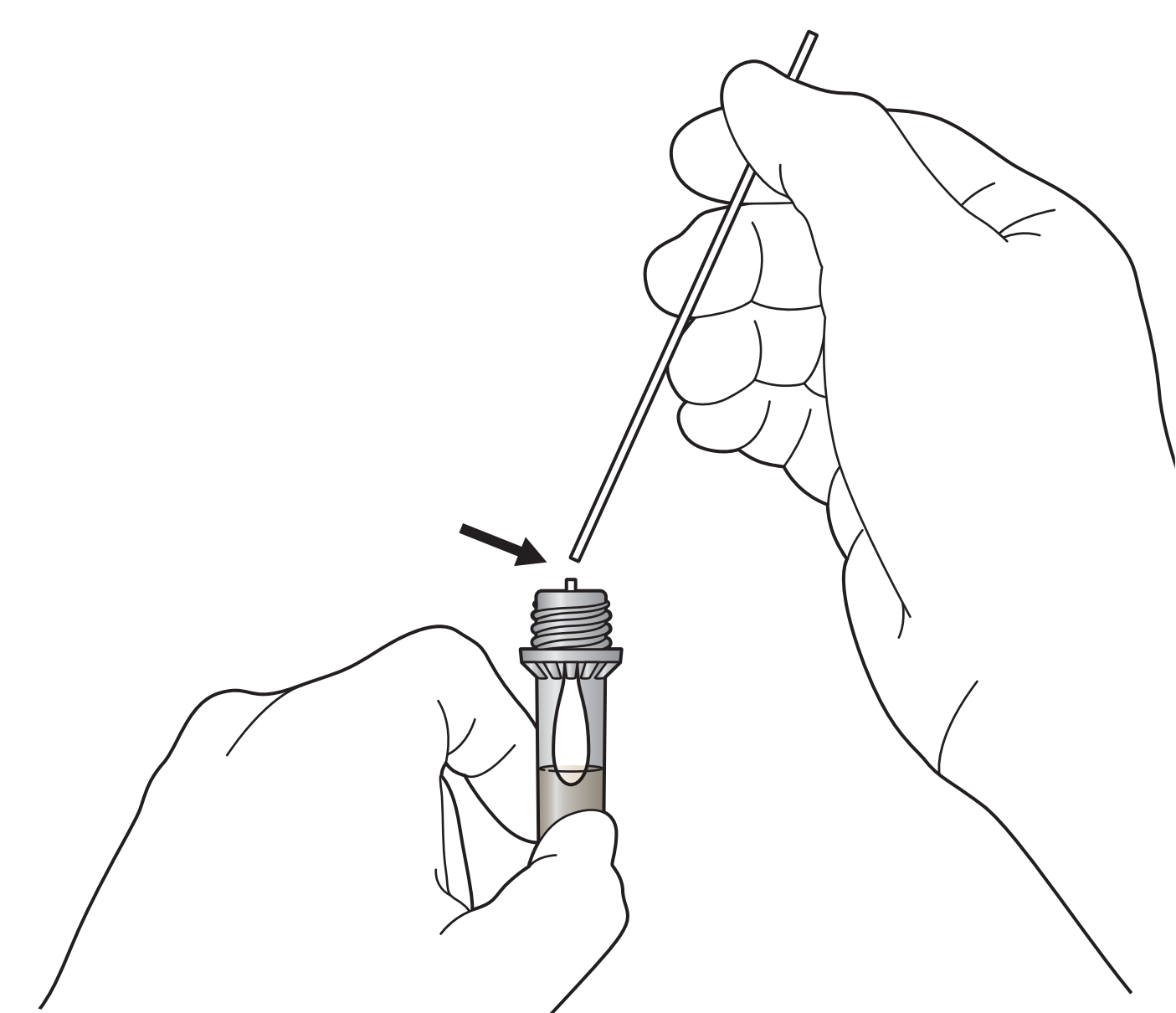
1 Put a sample swab into the fecal sample about 5-6 times at different sites and try to avoid obtaining clumps of feces



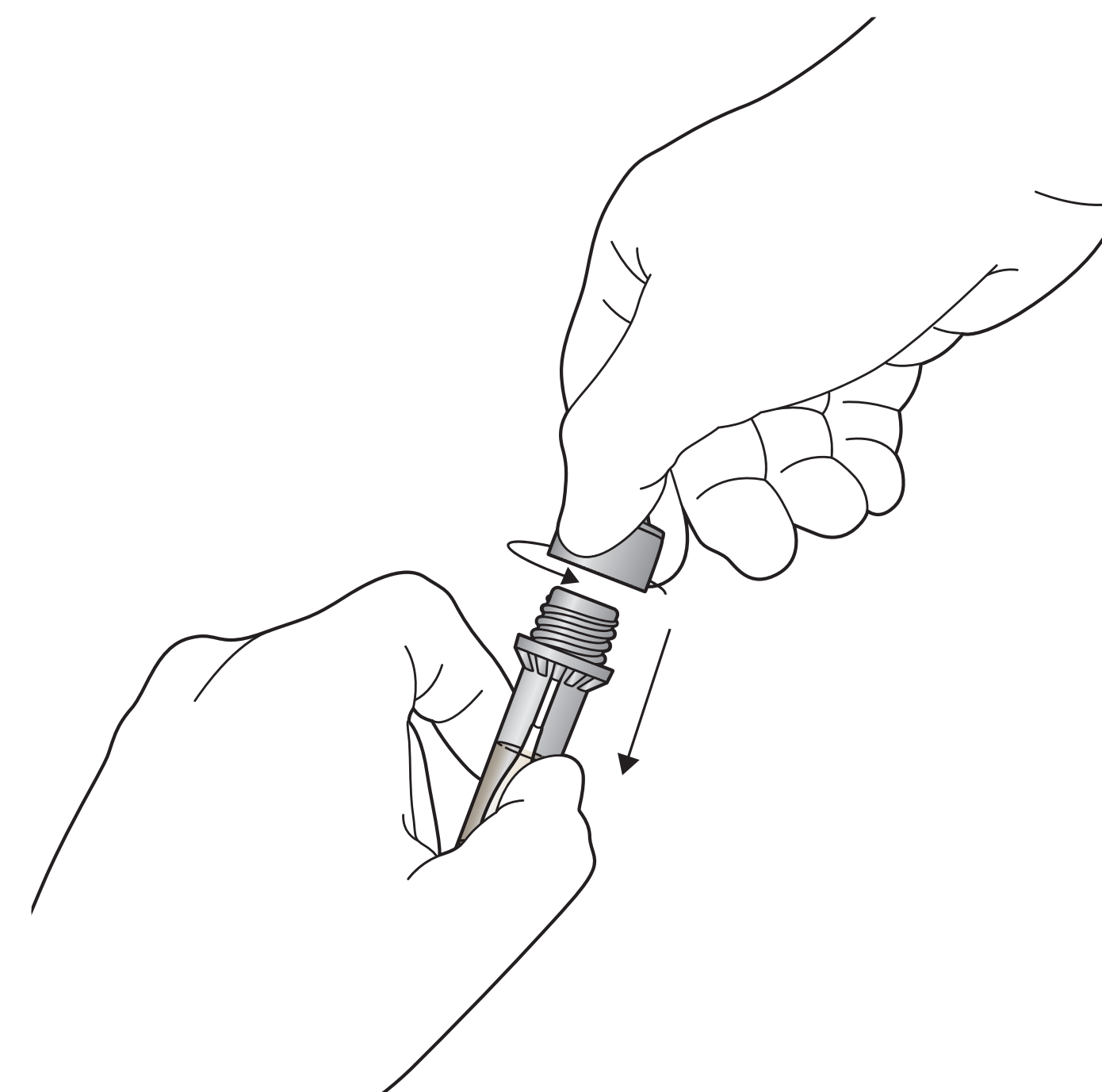
2 Insert the sample swab into the sample collection tube and swirl the sample swab at least 10 times.



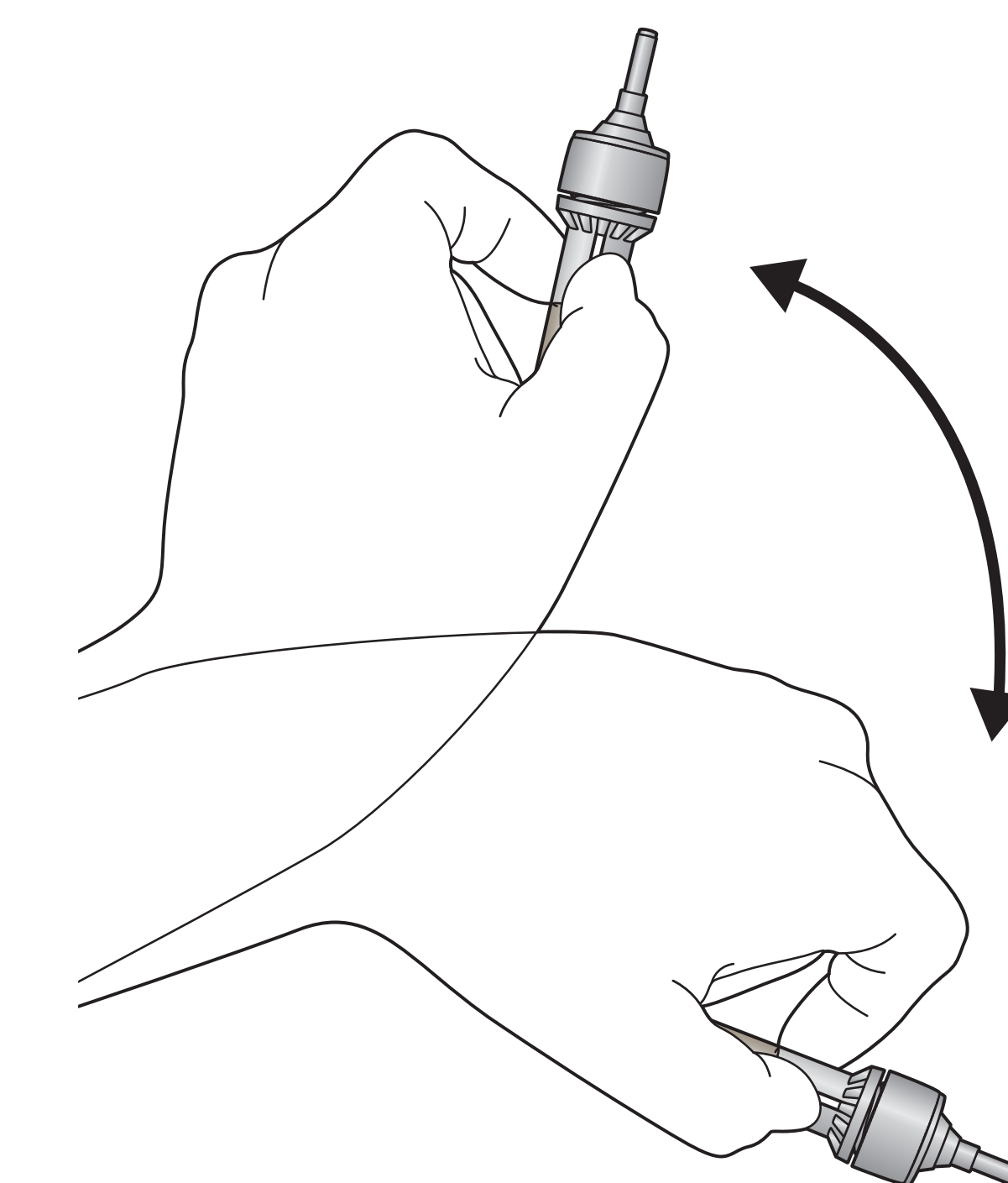
3 Break the sample swab and remove top portion of sample swab.



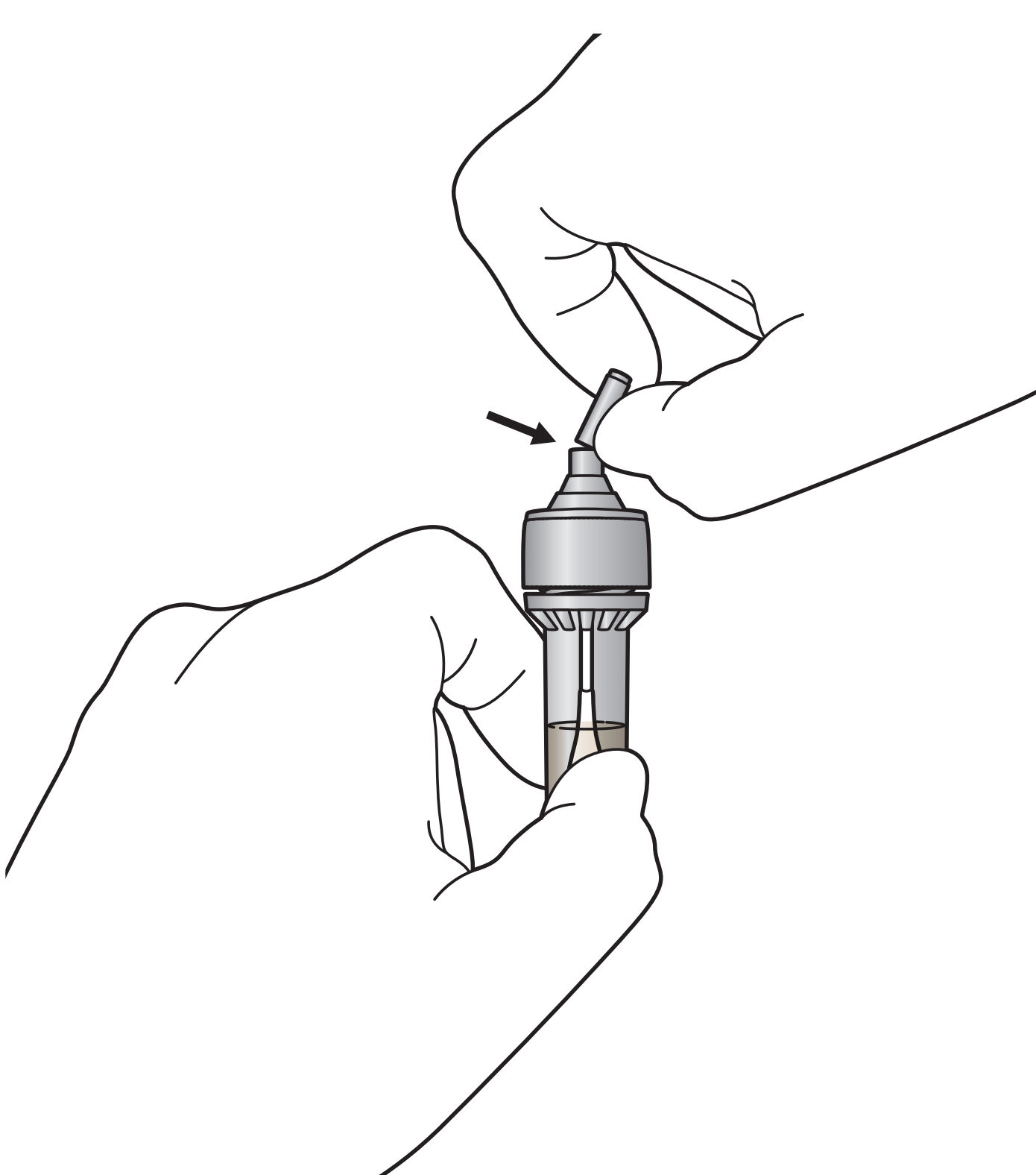
4 Assemble filter cap.



5 Mix the sample by shaking it 5-10 times

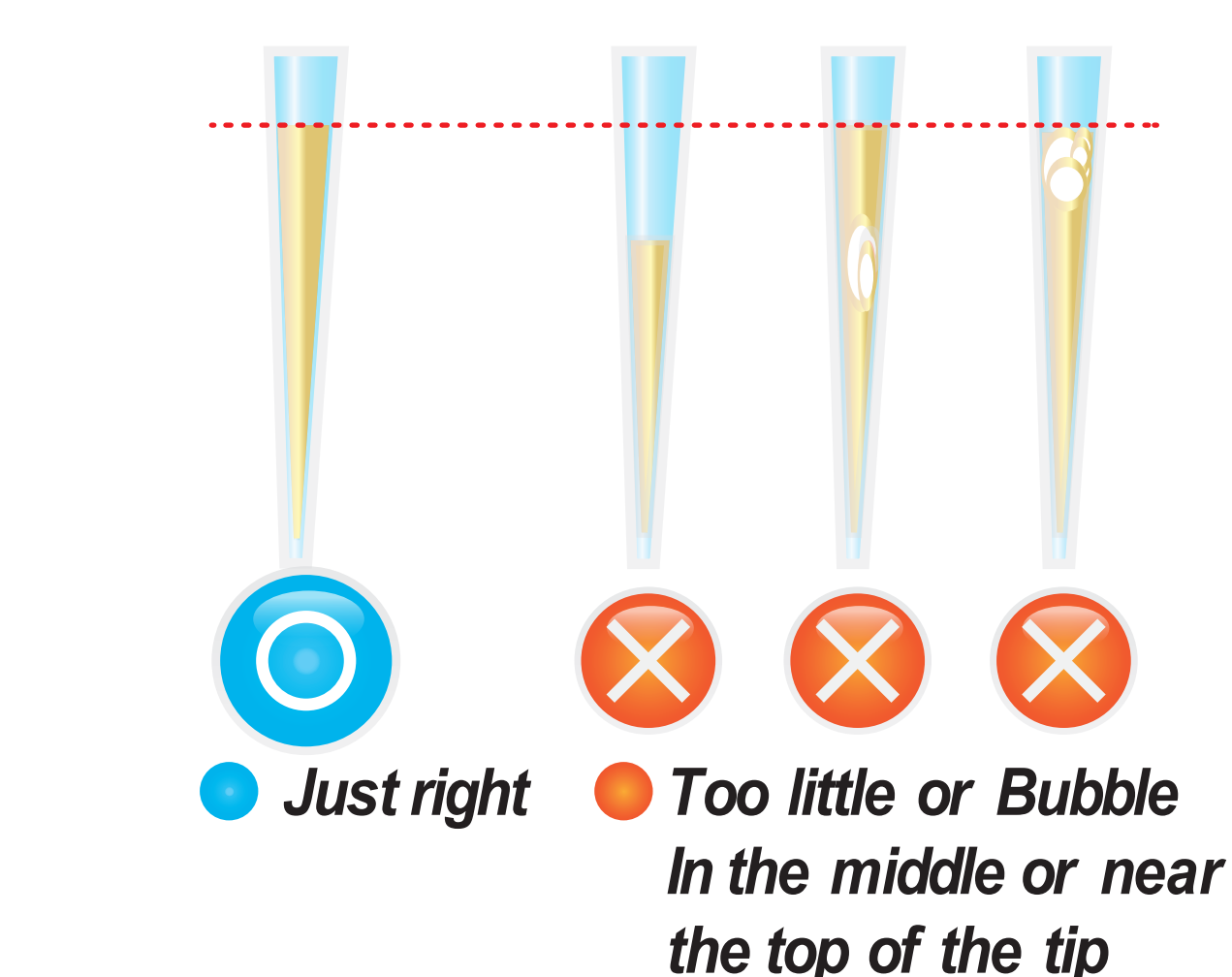


6 Break the break point of filter cap

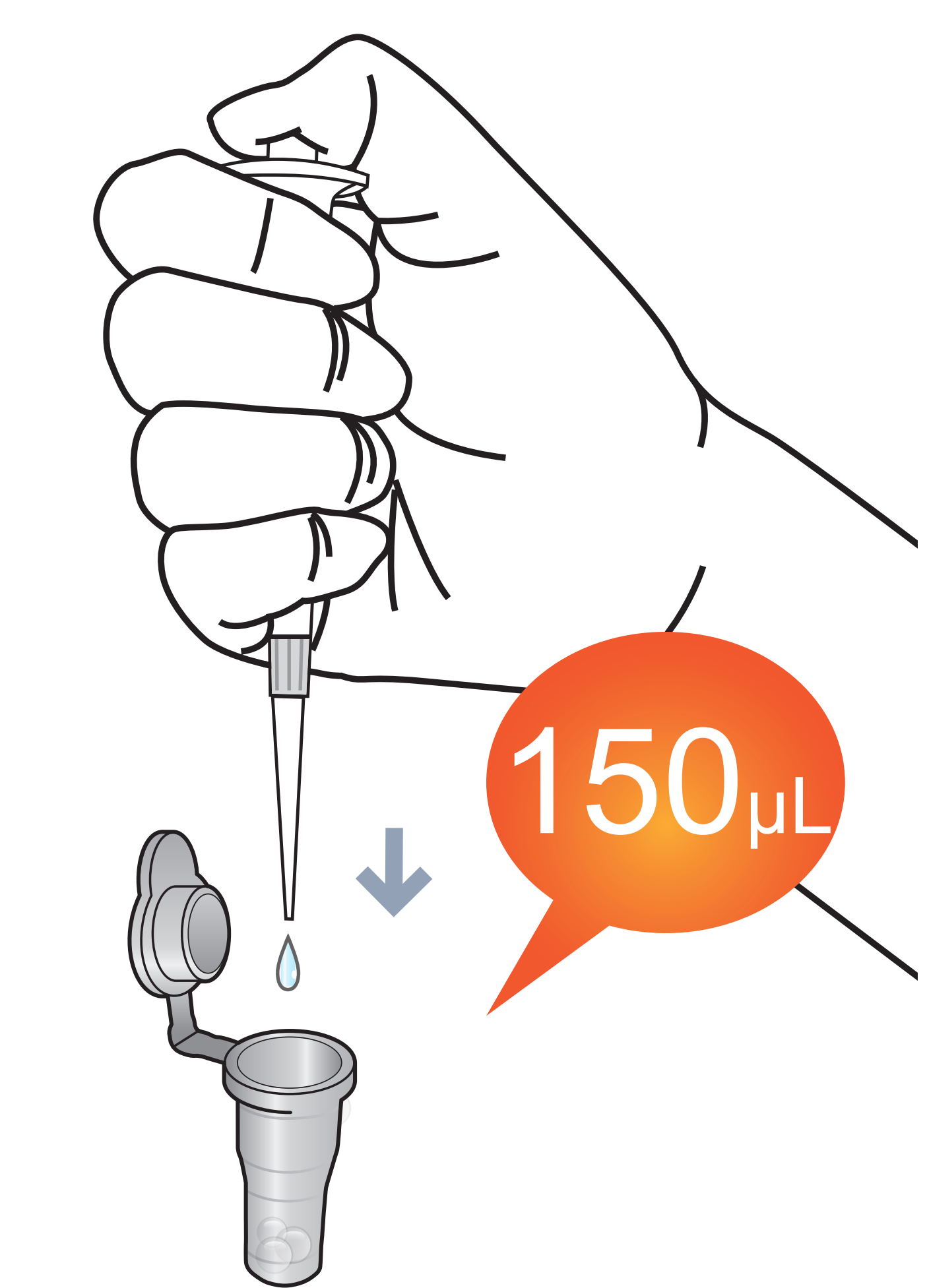


Test Procedure

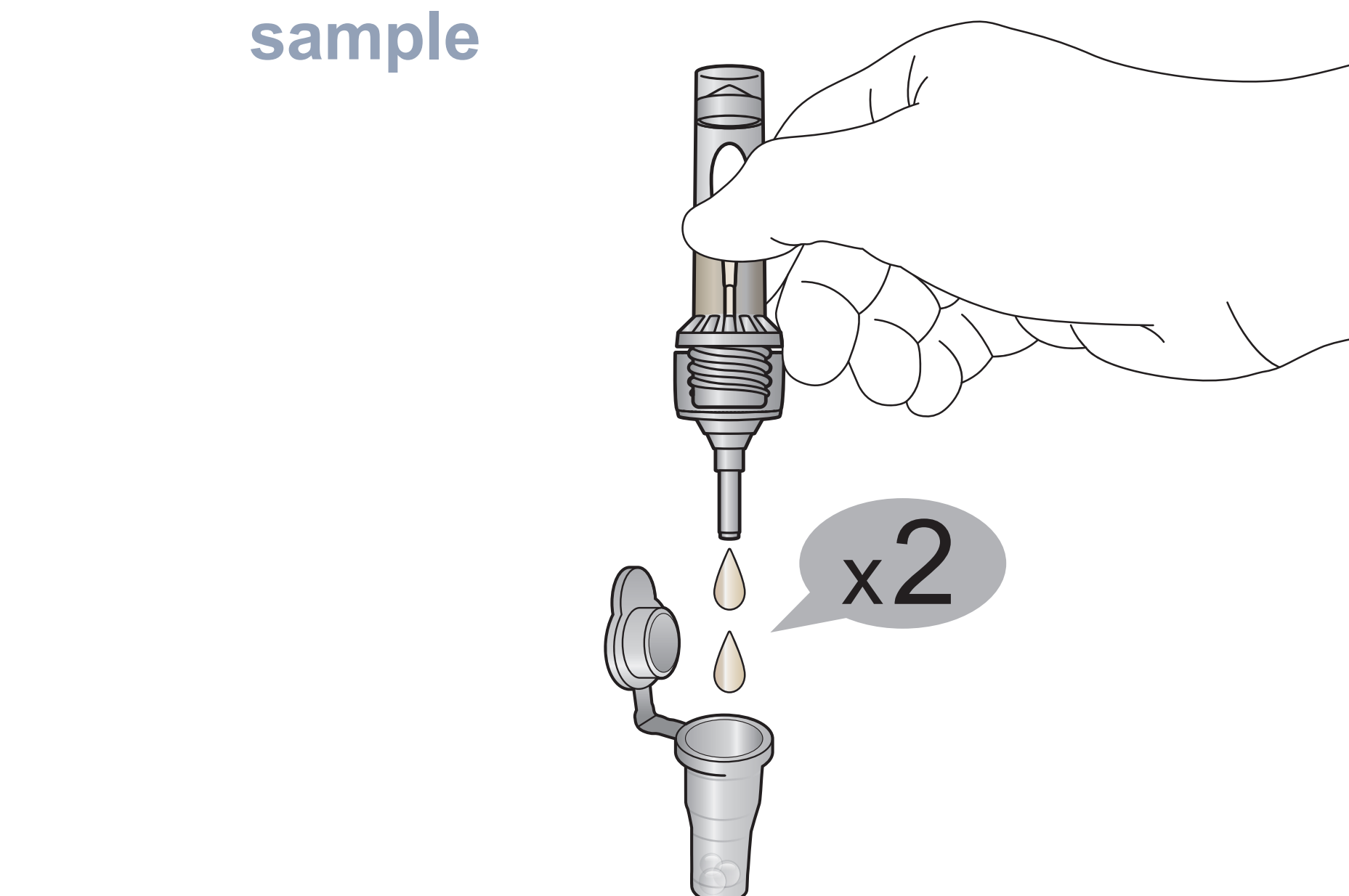
7 Draw the diluent from diluent vial 150 µL



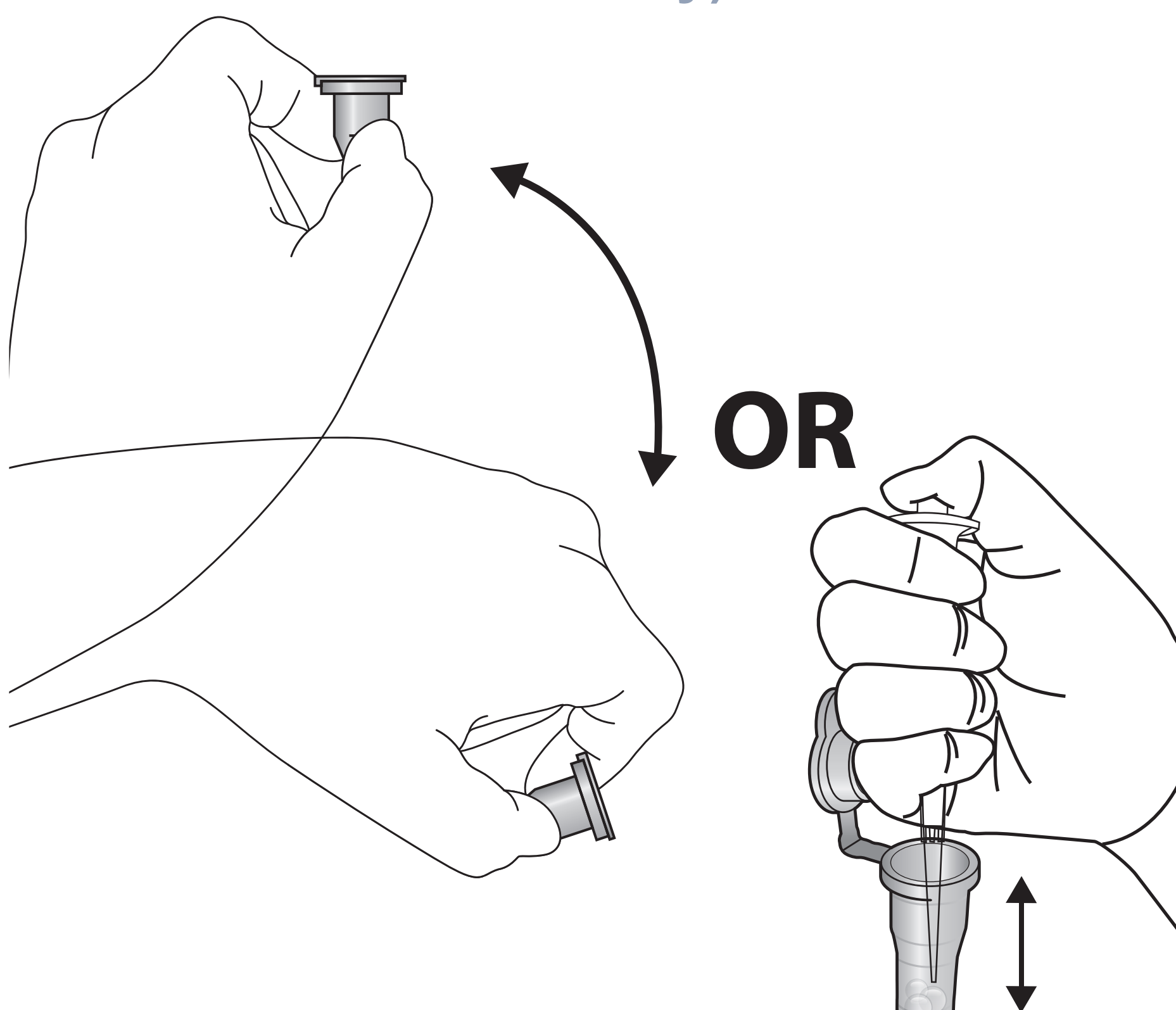
8 Add it into detection buffer tube



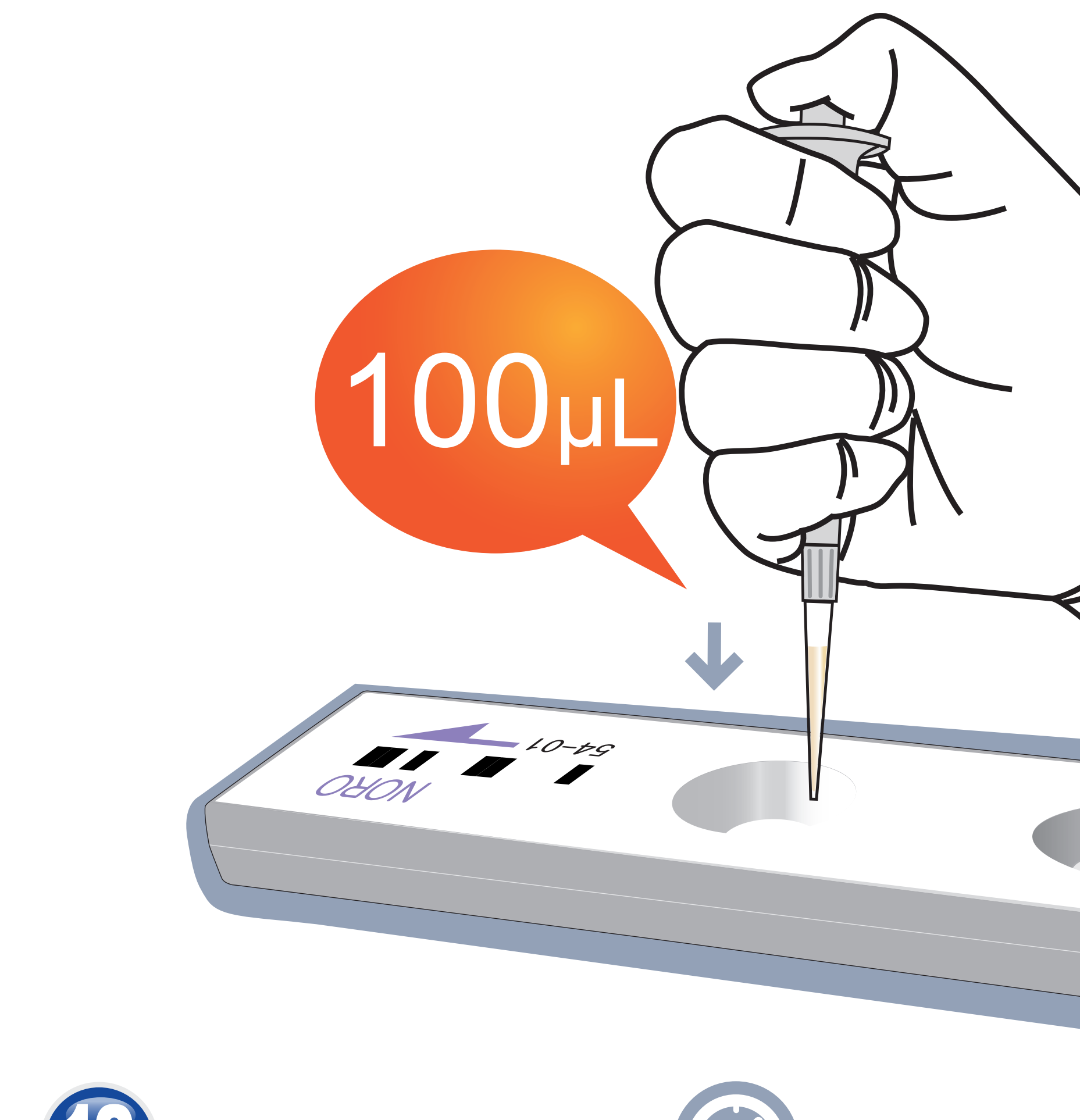
9 Transfer only 2 drops (about 30 µL) of feces sample



10 Mix well by pipetting 10-20 times. (The sample mixture must be used immediately).



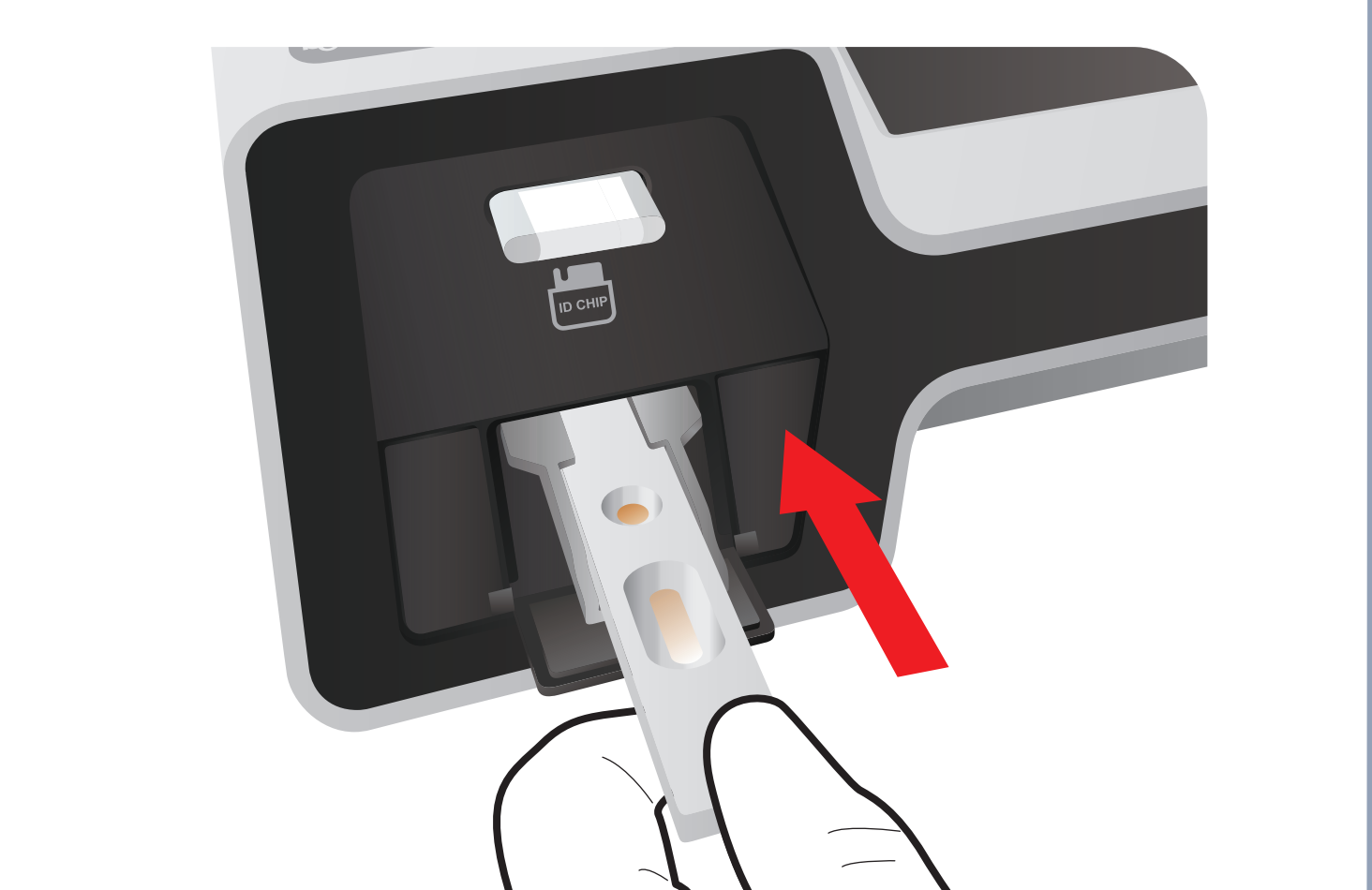
11 Load the sample Mixture



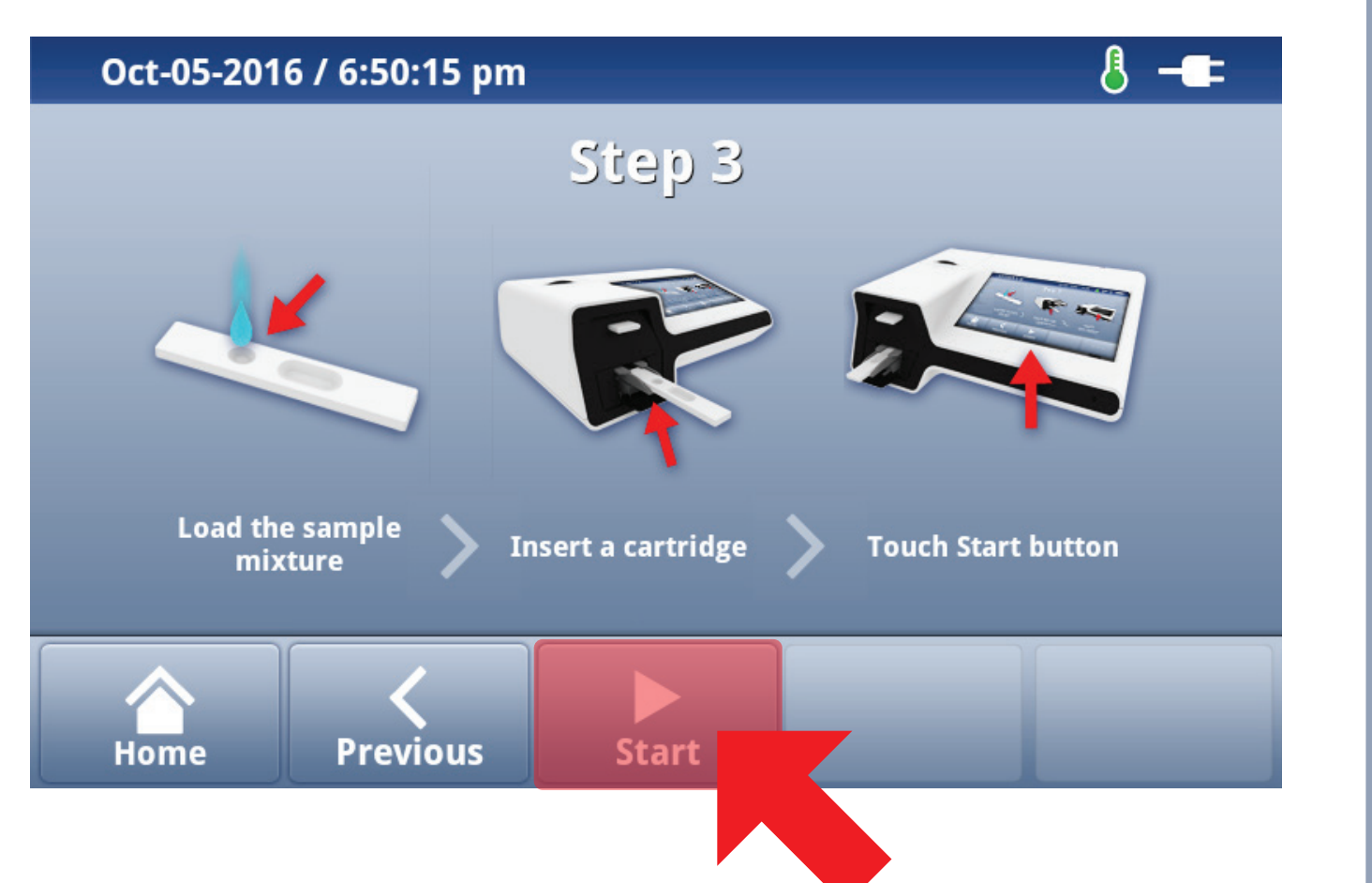
12 Waiting 12 minutes



13 Insert the test cartridge



14 Press 'Select'



15 Read the test result

