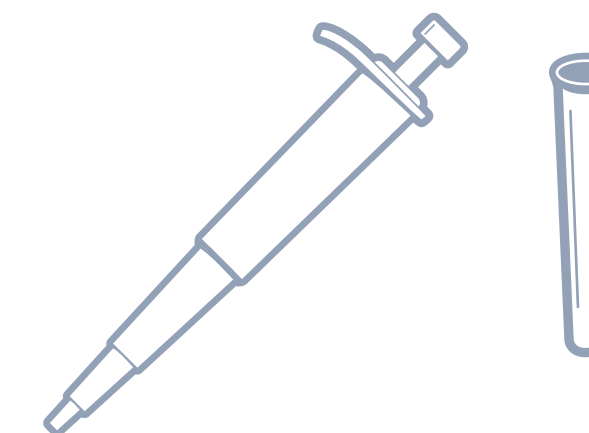
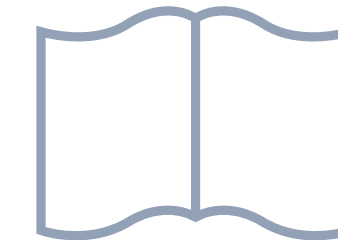
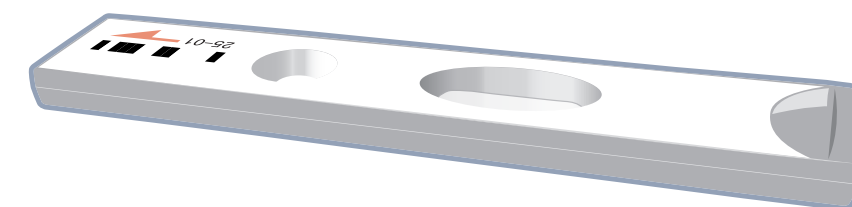
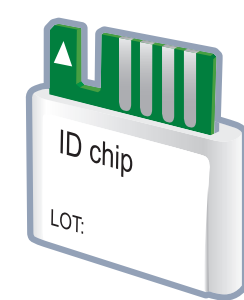


ichromaTM Total IgE

Quick Reference Guide

Test Components

- ID chip
- Detection buffer tube
- Test cartridge
- ichroma II reader
- Instruction for use
- Pipette & tip (not included)



Important



If detection buffer tube are stored in refrigerator, keep the sample collection tube at room temperature for 30 minutes just prior to the test.



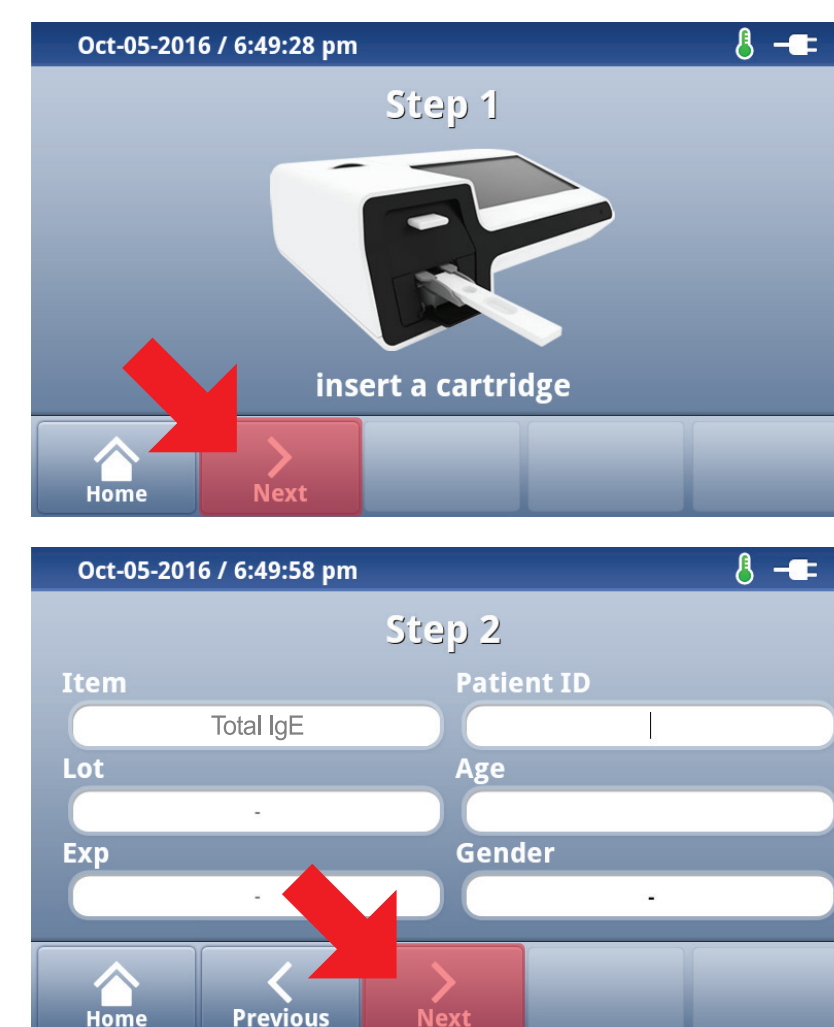
Make sure that lot number of the 'ID Chip' is exactly same as the lot number of 'Test Cartridge'

II. Test Procedure ▶

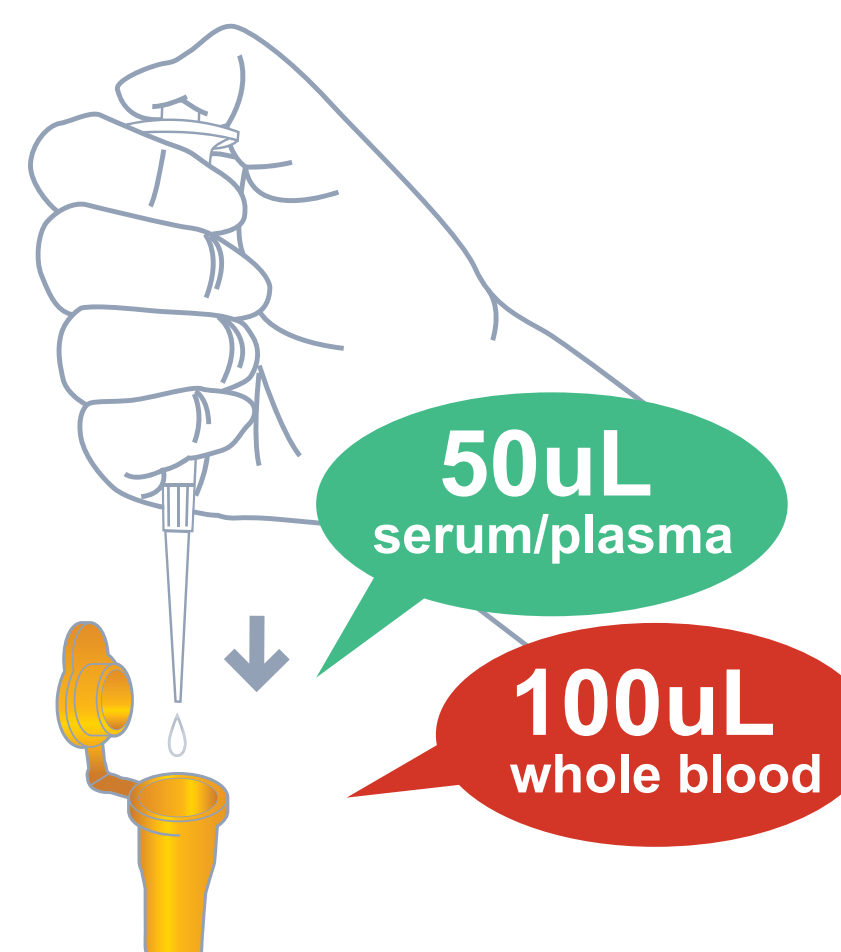
Insert ID Chip



Press 'Select'



Transfer 50uL of serum/plasma
(or 100uL of whole blood)
to detection buffer tube



Gently shake the
sample mixture tube



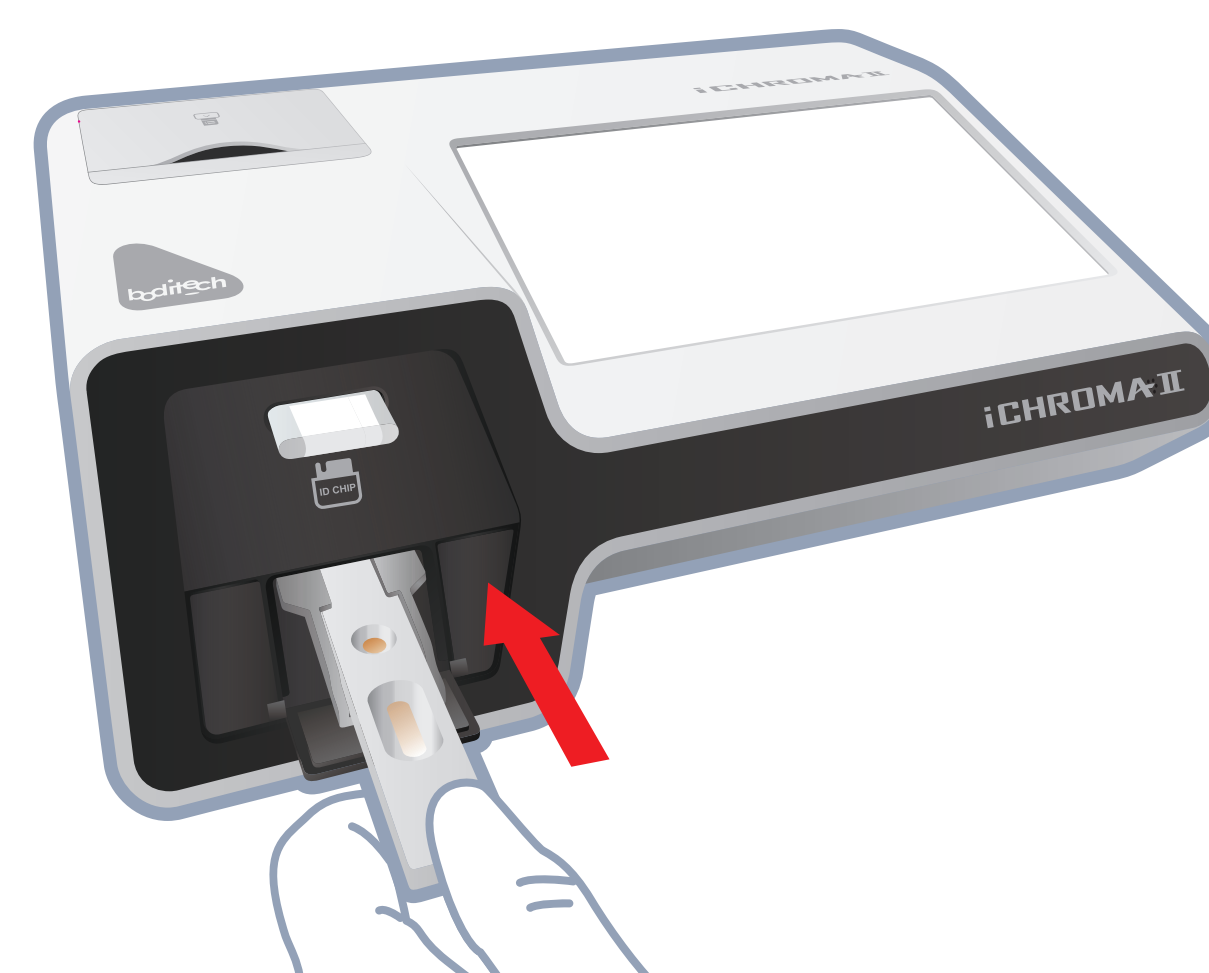
Take 75uL of the mixture and
apply to the cartridge



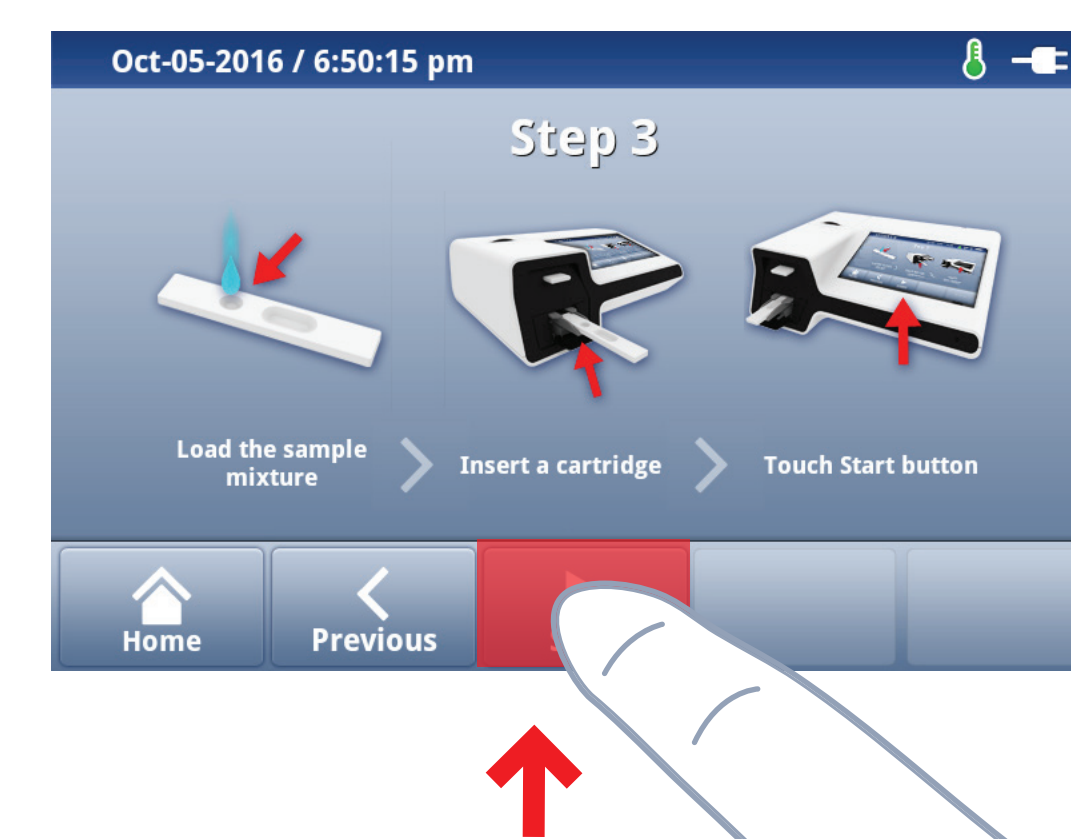
Load the sample mixture



Insert a cartridge



Press 'Select'



Result within 12 minutes

