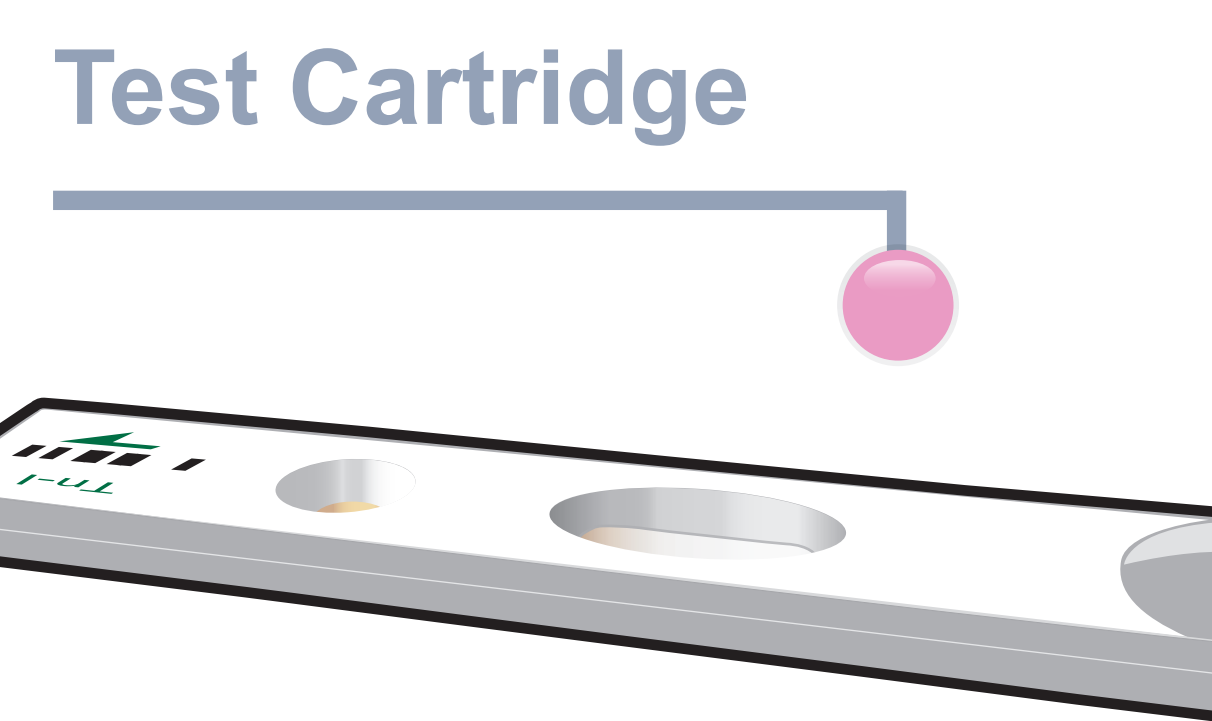
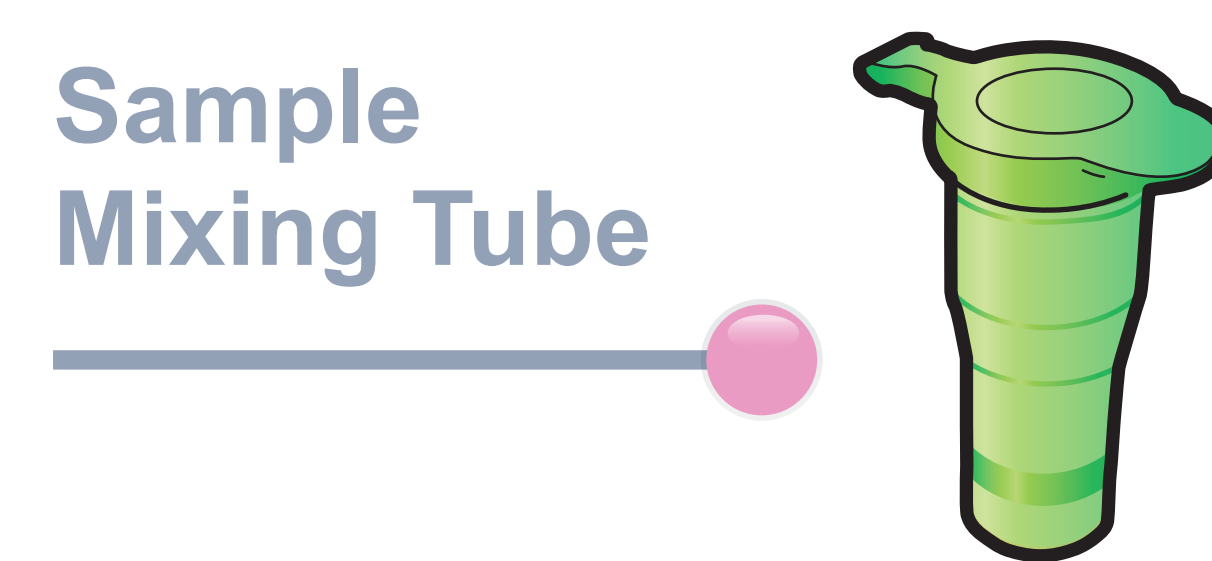
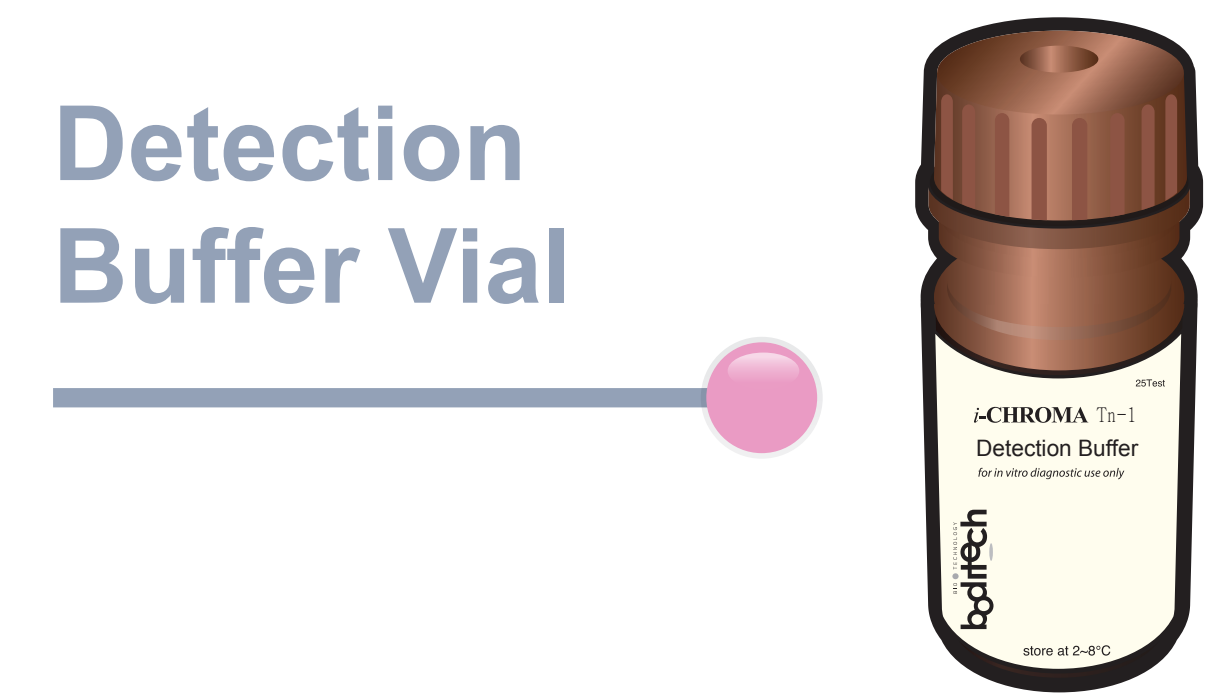
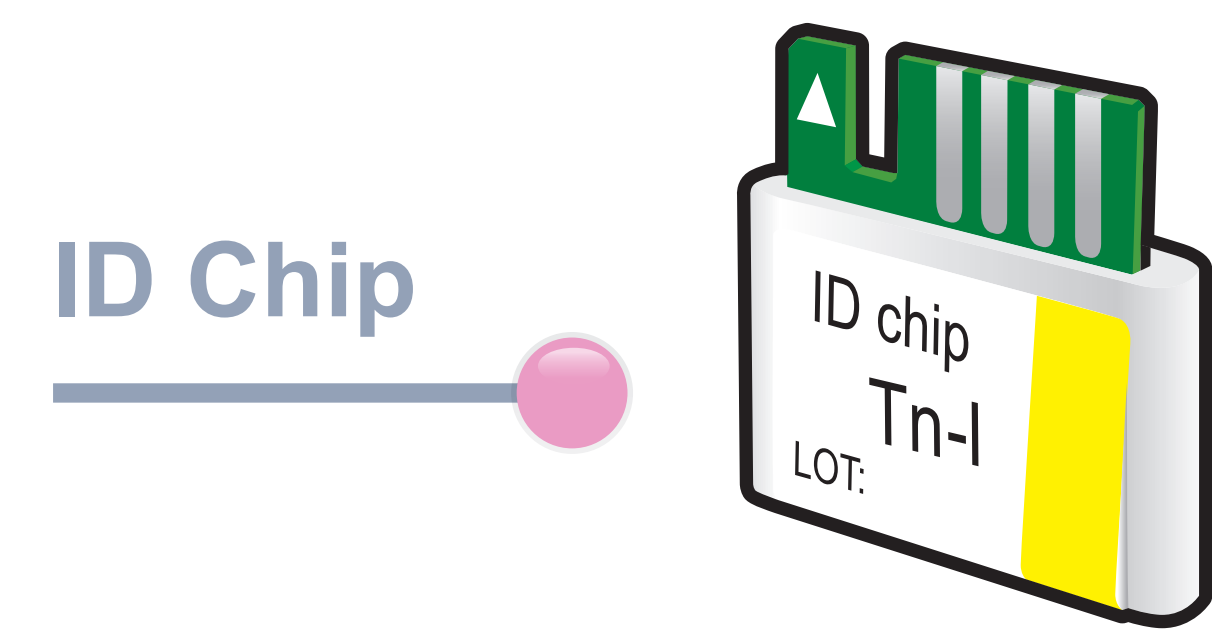


ichromaTM Tn-I

Test Setup

Test Components



iCHROMA II Reader

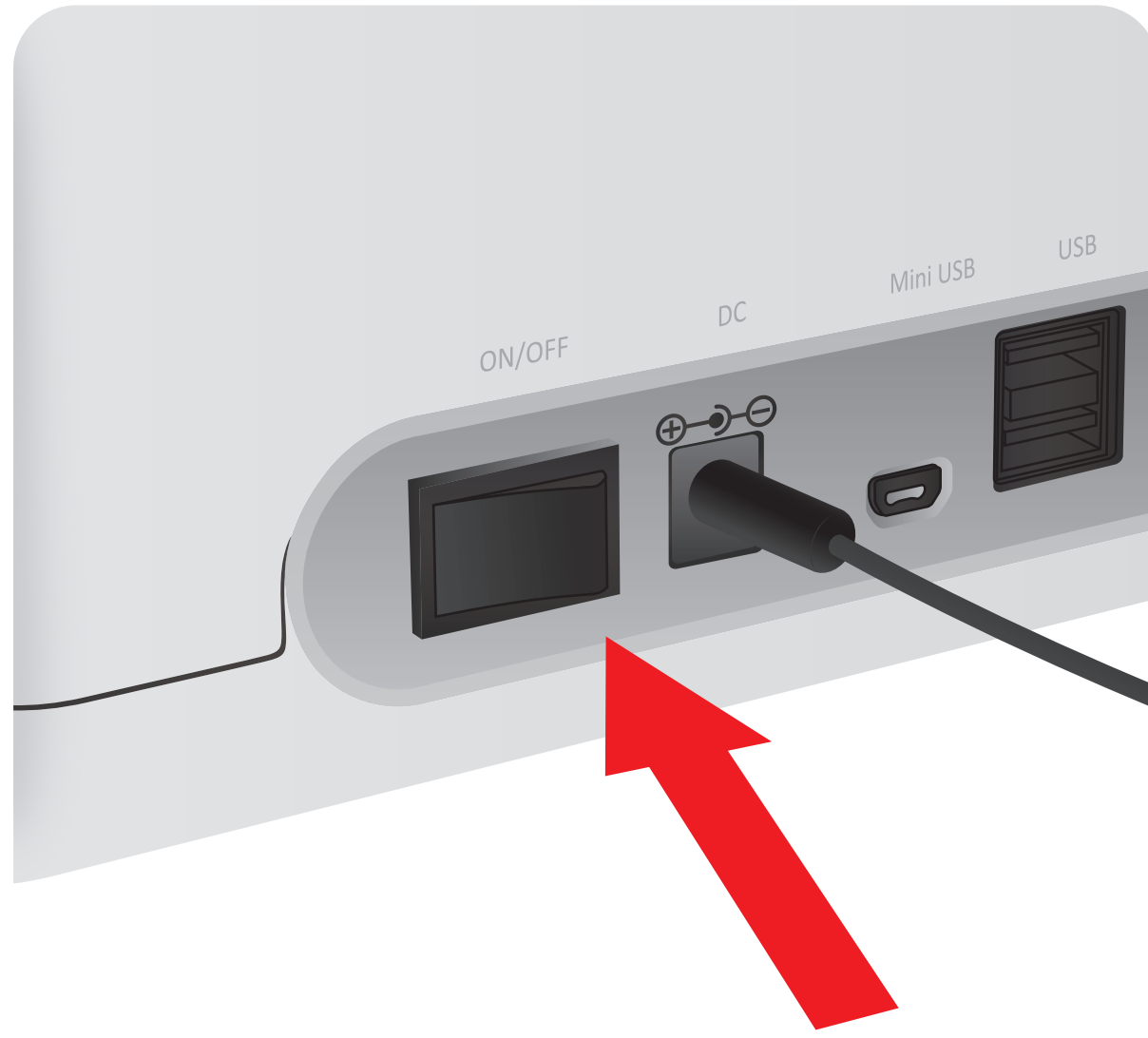


Important

Allow 'Detection Buffer Tube' to attain room temperature at least for 30 minutes before performing the test

Make sure that lot number of the 'ID Chip' is exactly same as the lot number of 'Test Cartridge' and 'Detection Buffer Tube'

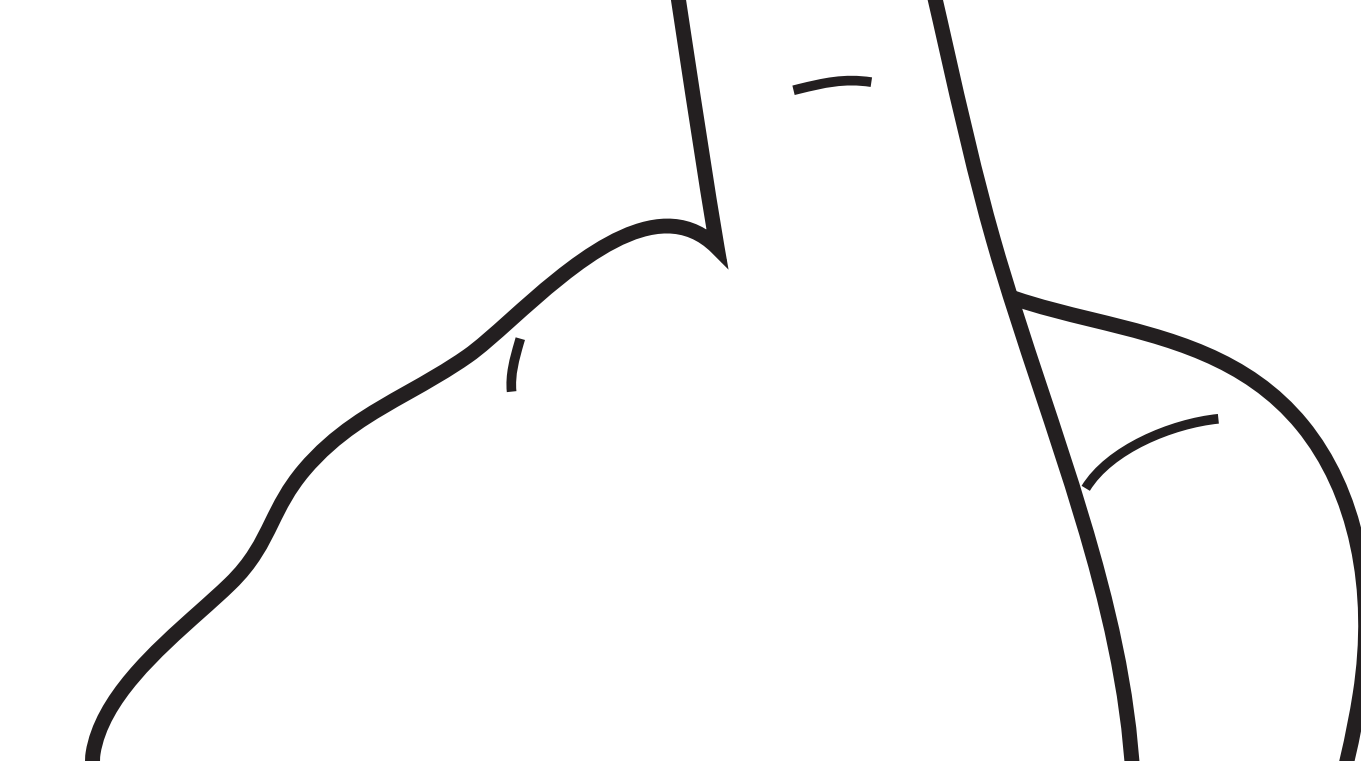
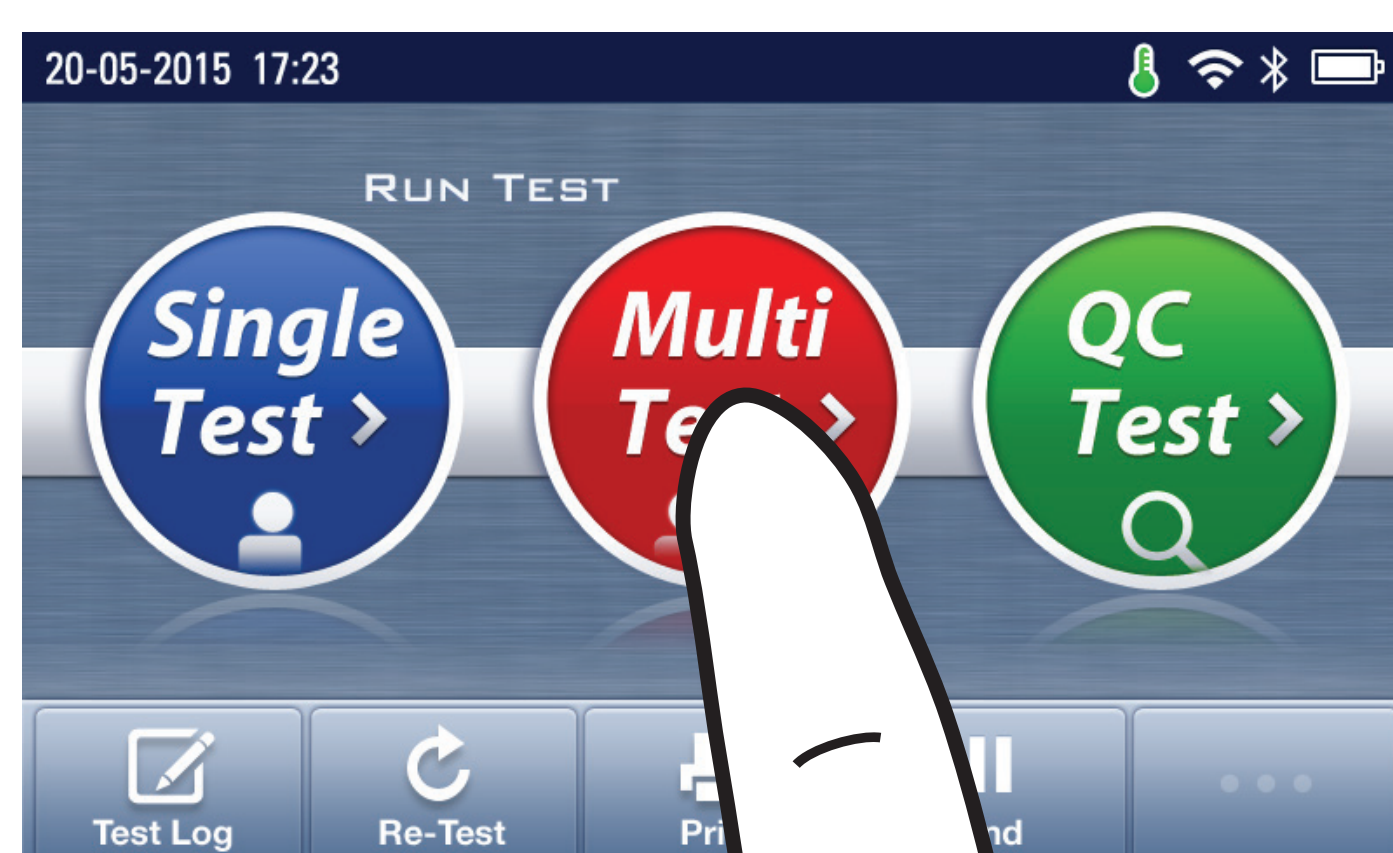
1 Turn the power switch 'On'



2 Insert ID Chip

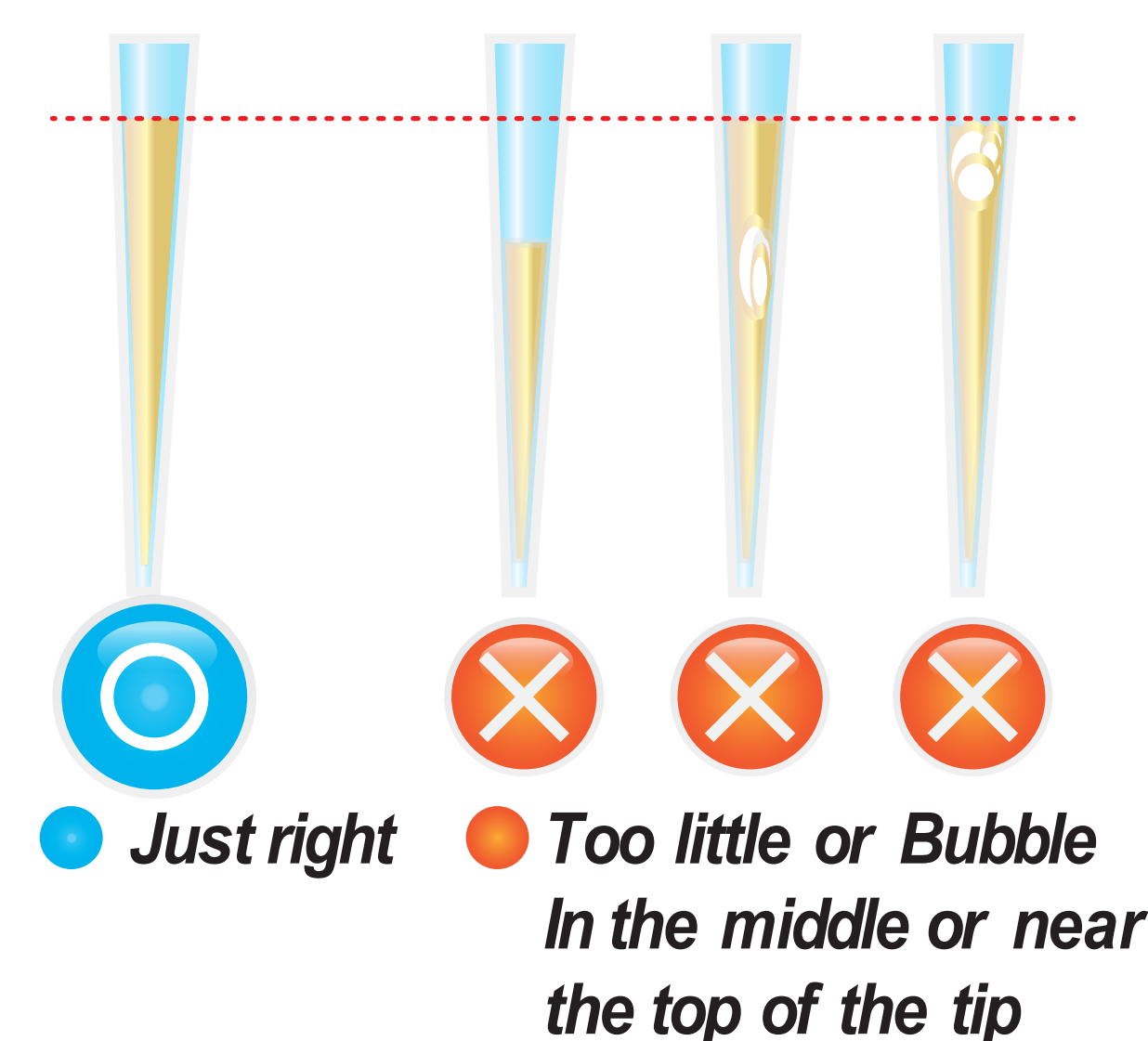
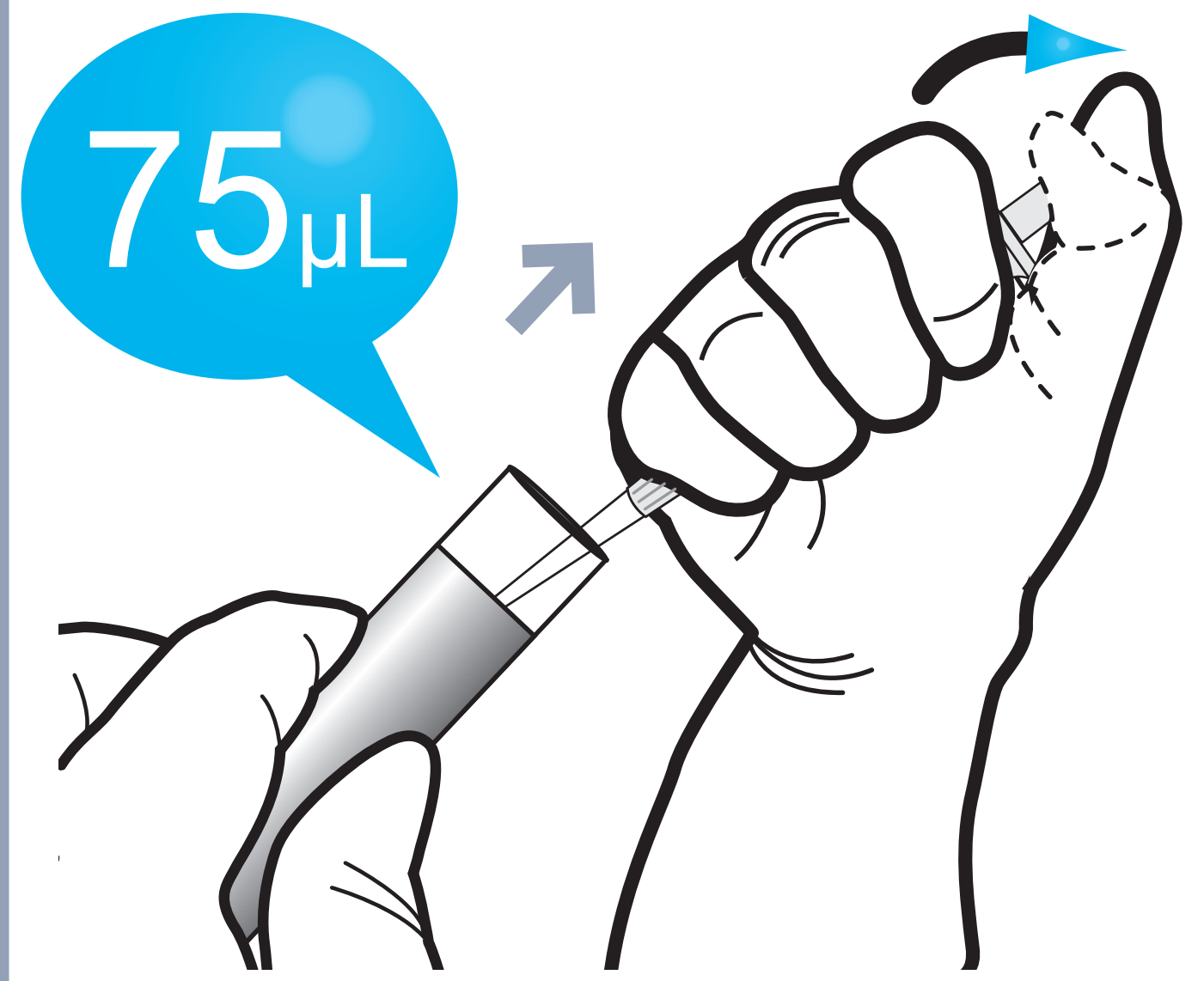
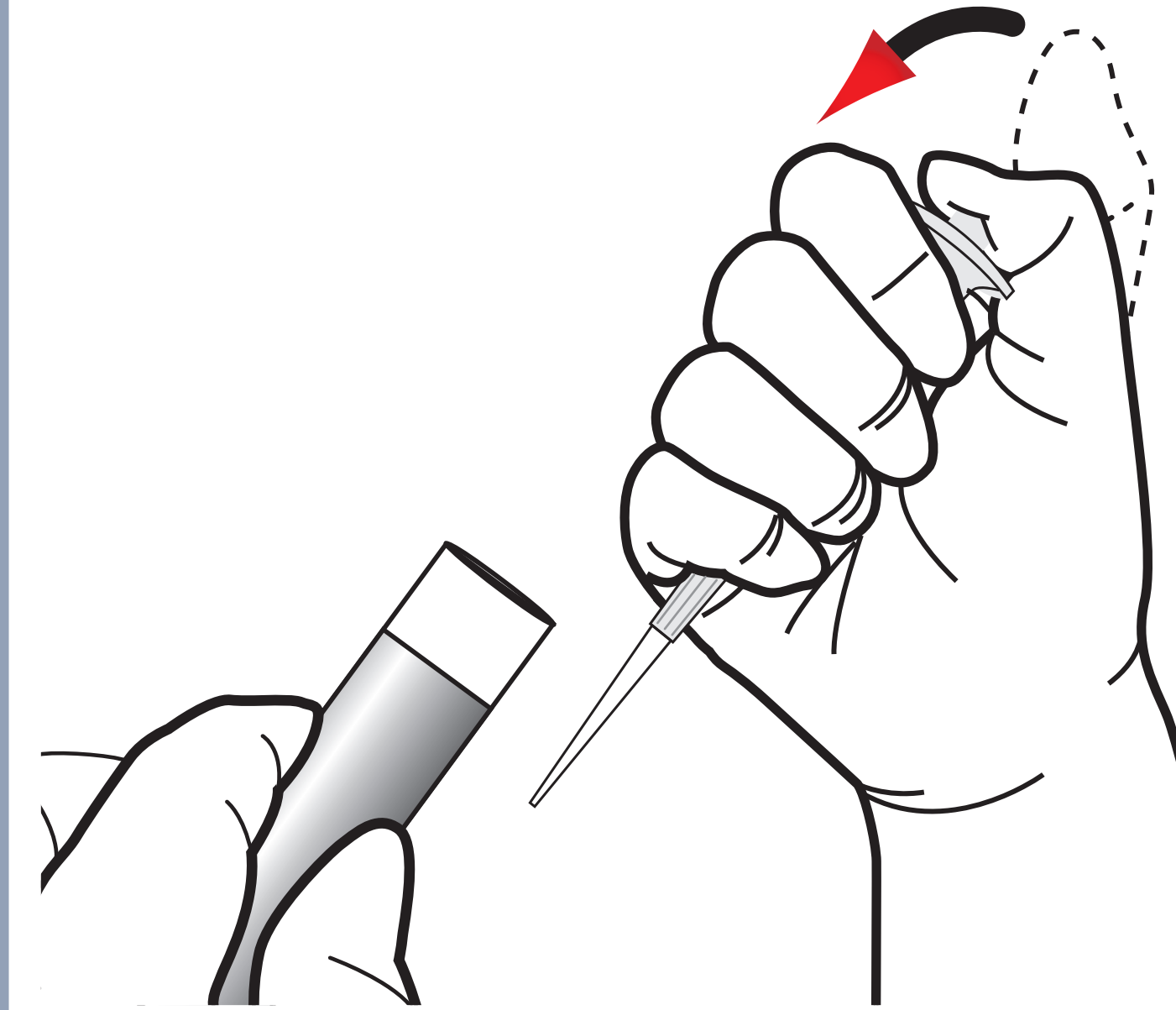


3 Press 'Multi-test'

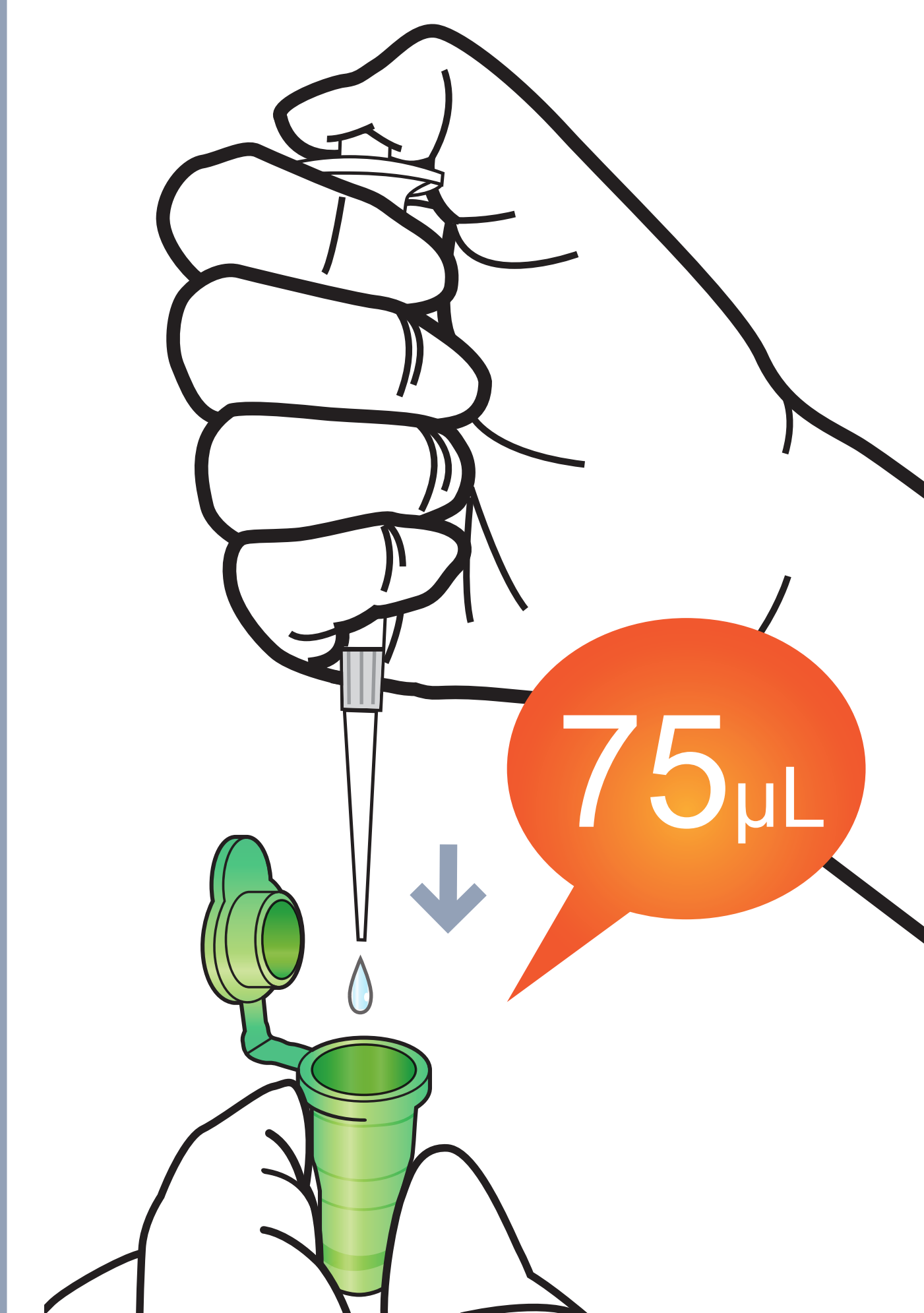


Test Procedure

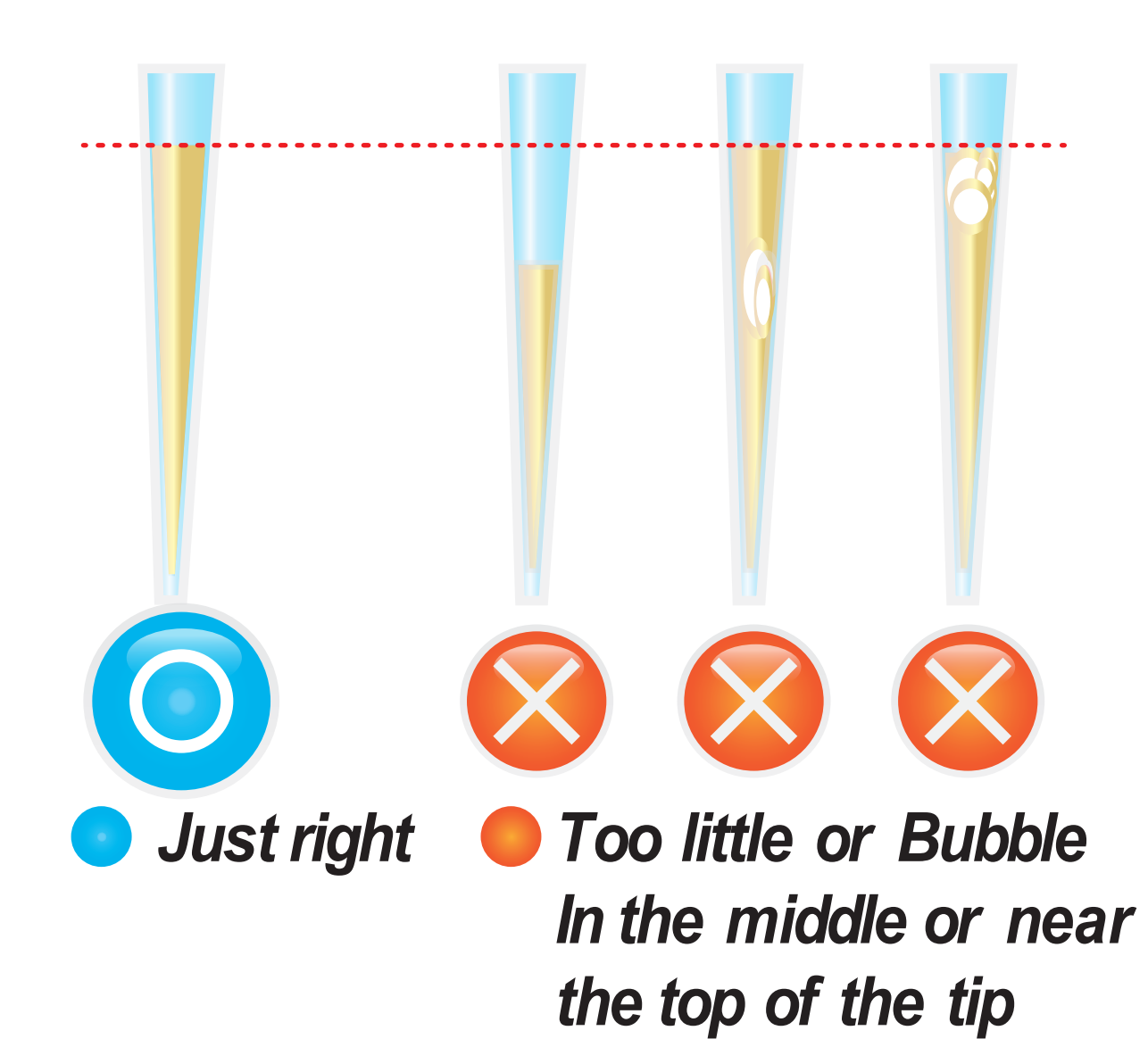
1 Draw 75 μ L (Serum / Plasma)



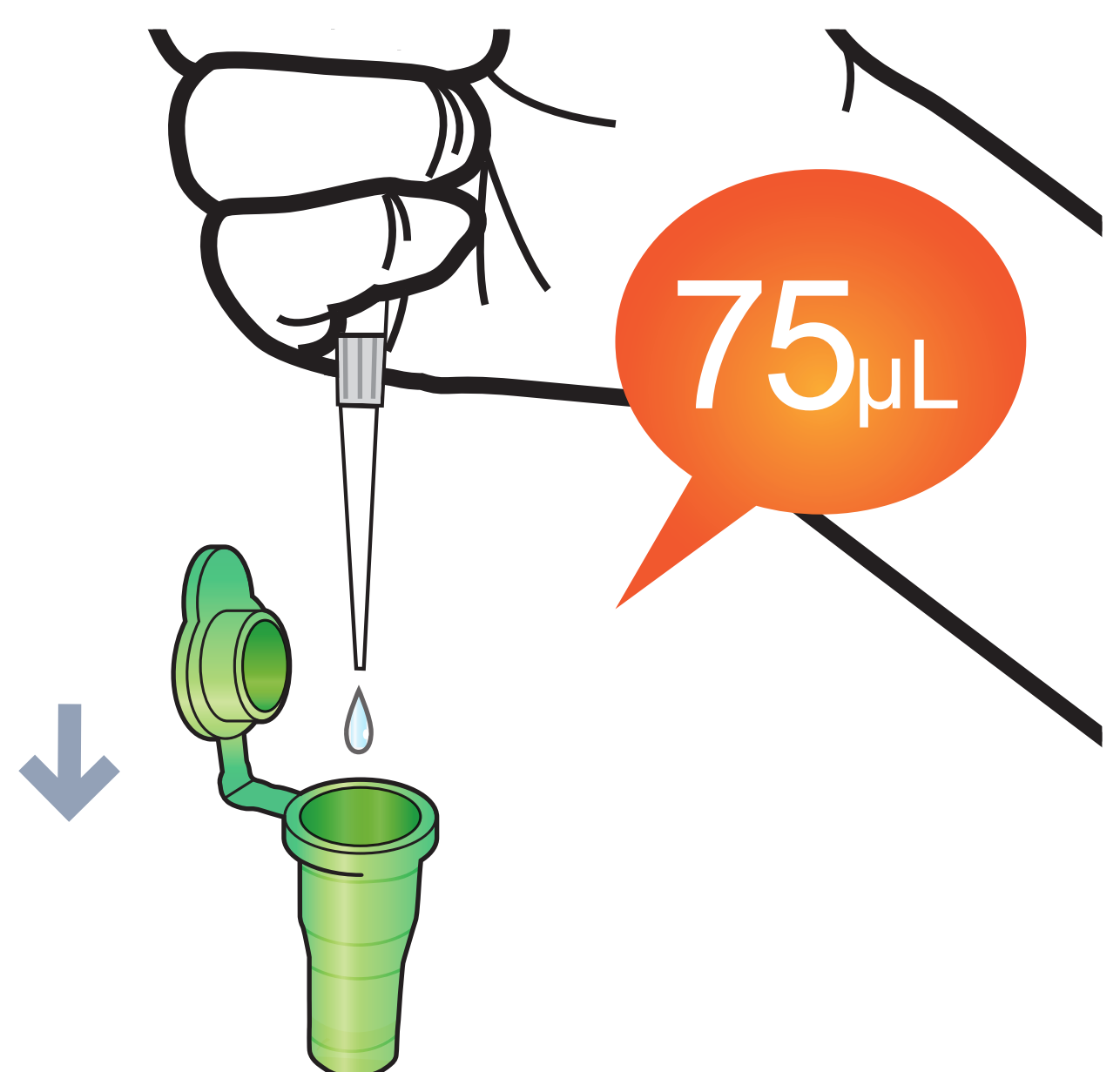
2 Add it into sample mixing tube



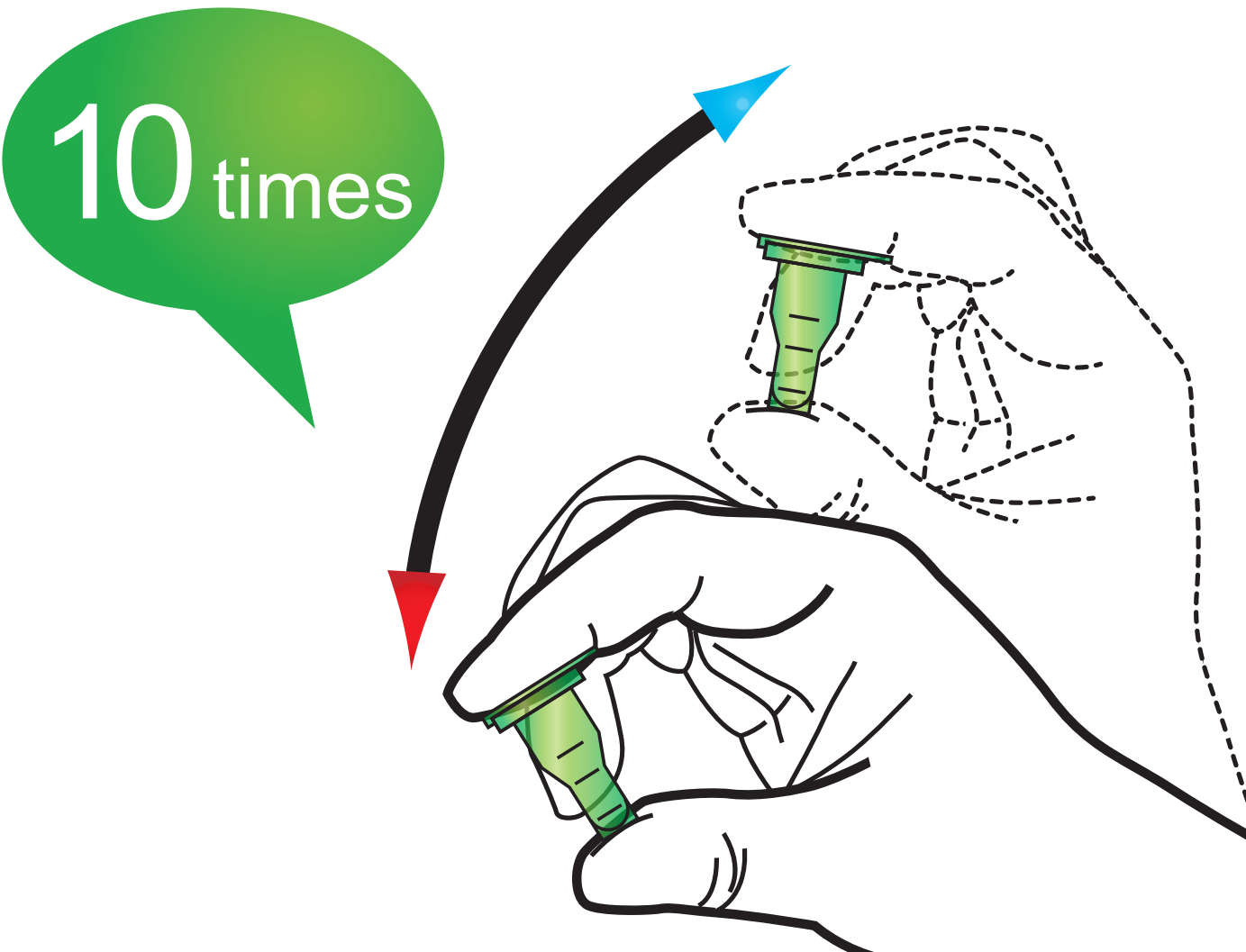
3 Draw 75 μ L (Detection buffer vial)



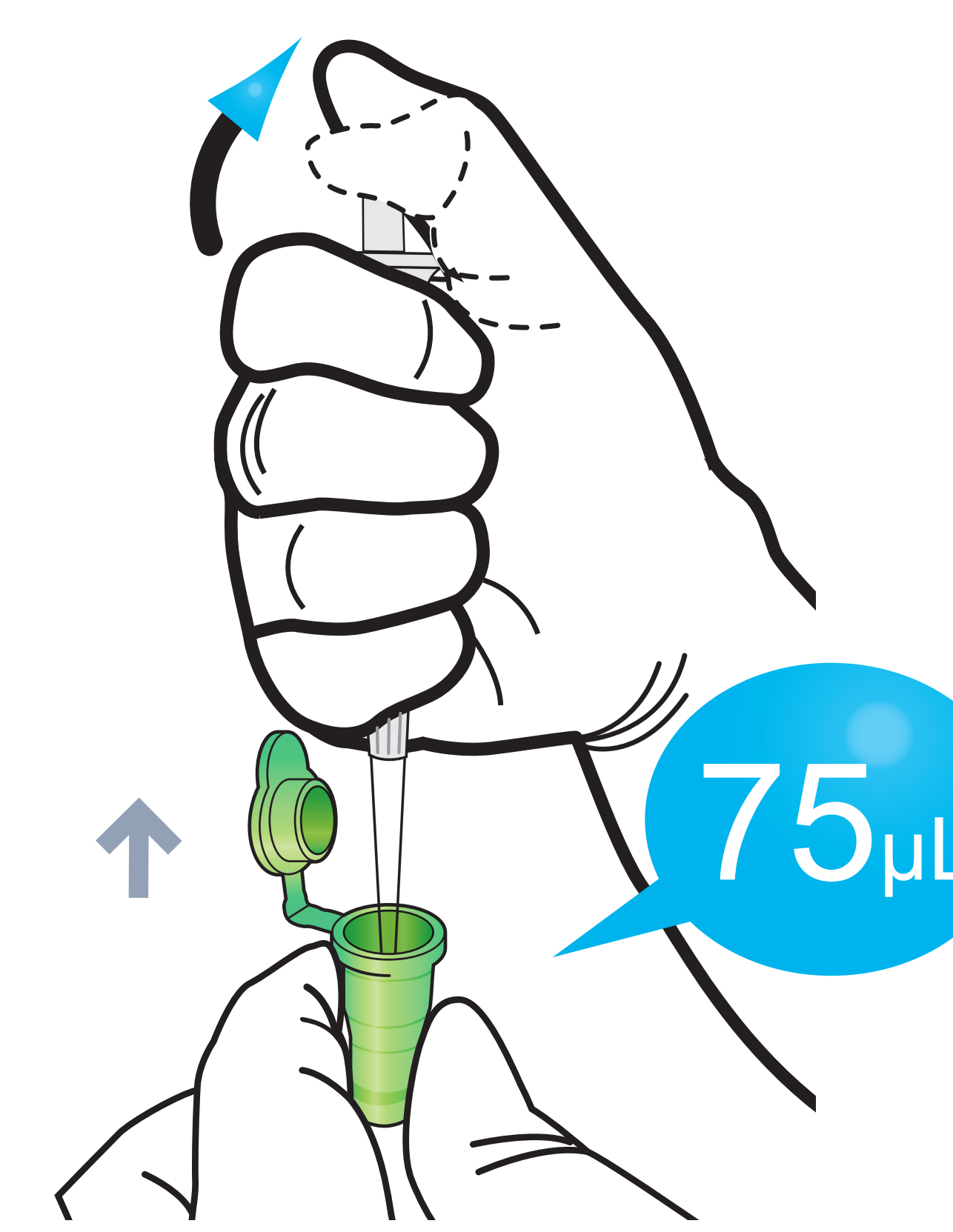
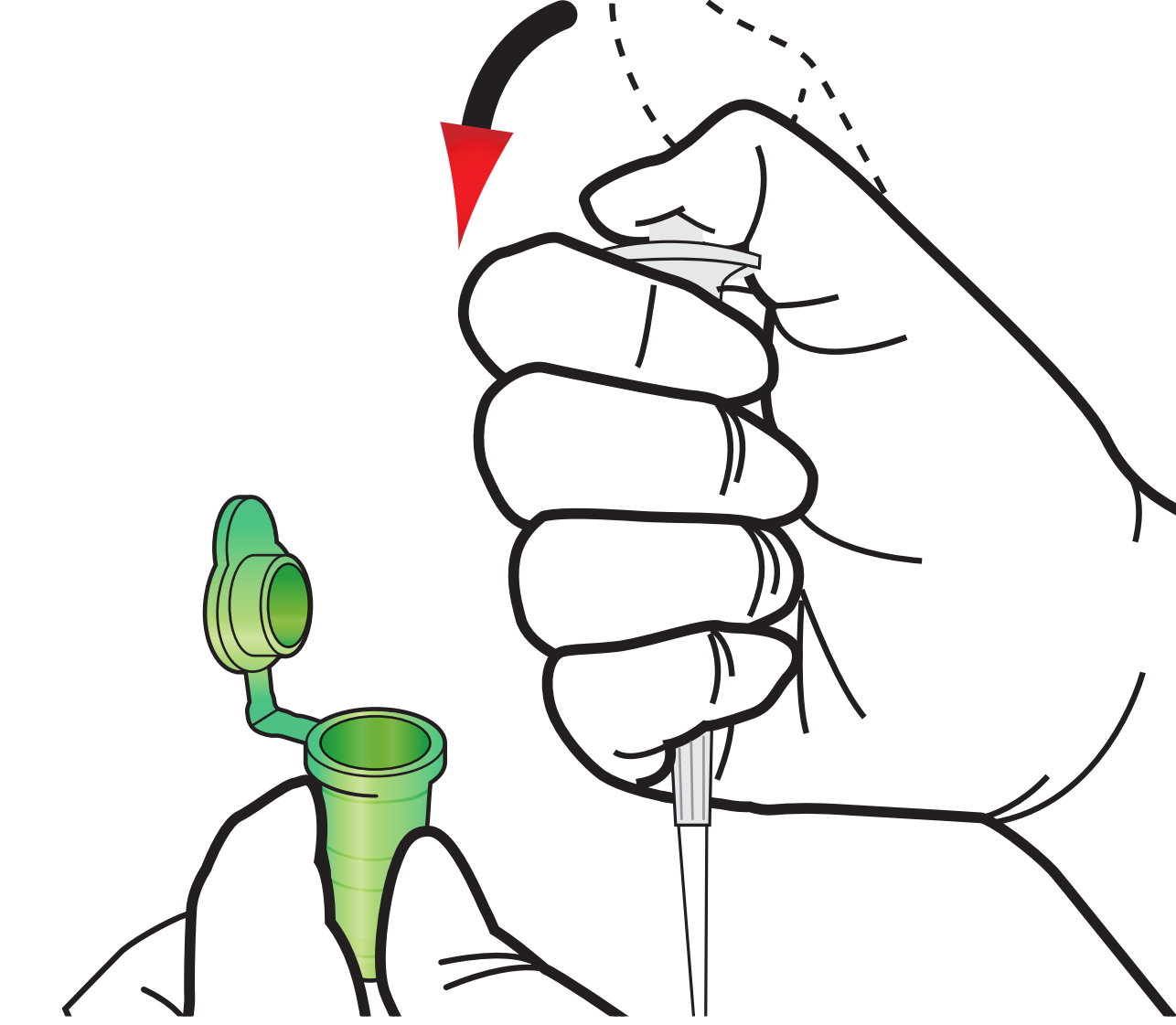
4 Add it into sample mixing tube



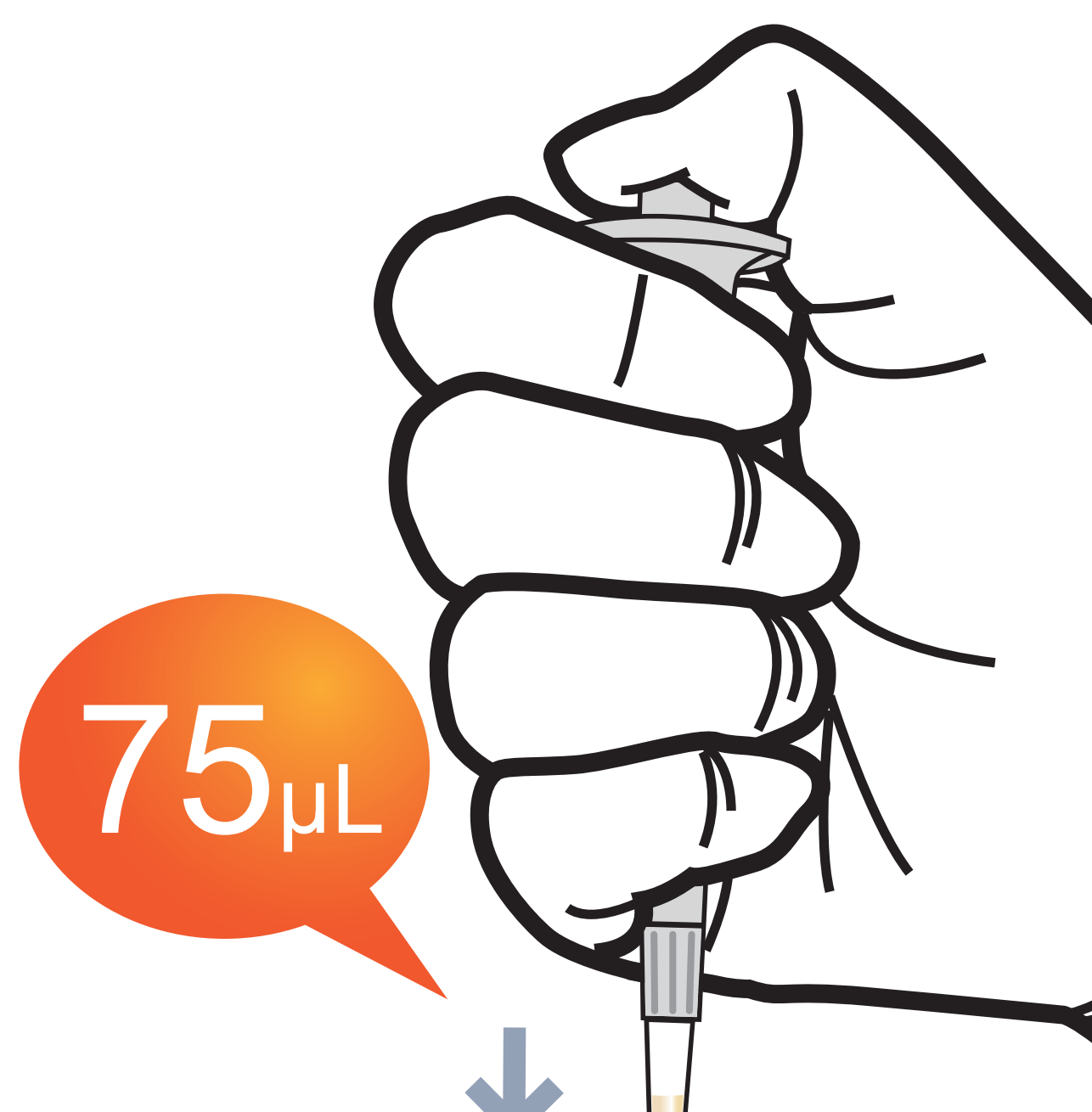
5 Shake the sample mixing tube



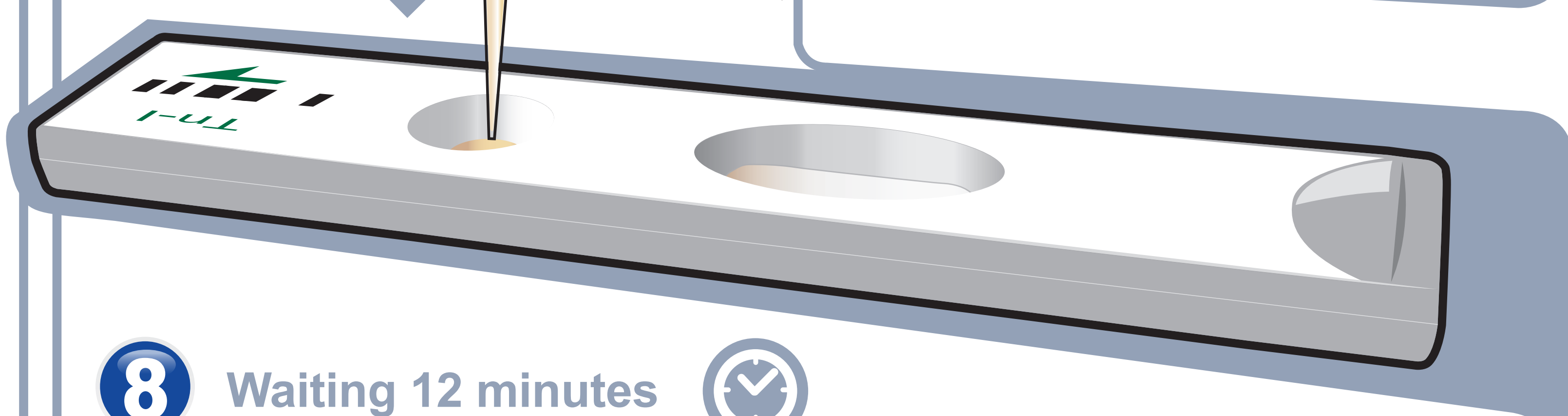
6 Draw the sample mixture



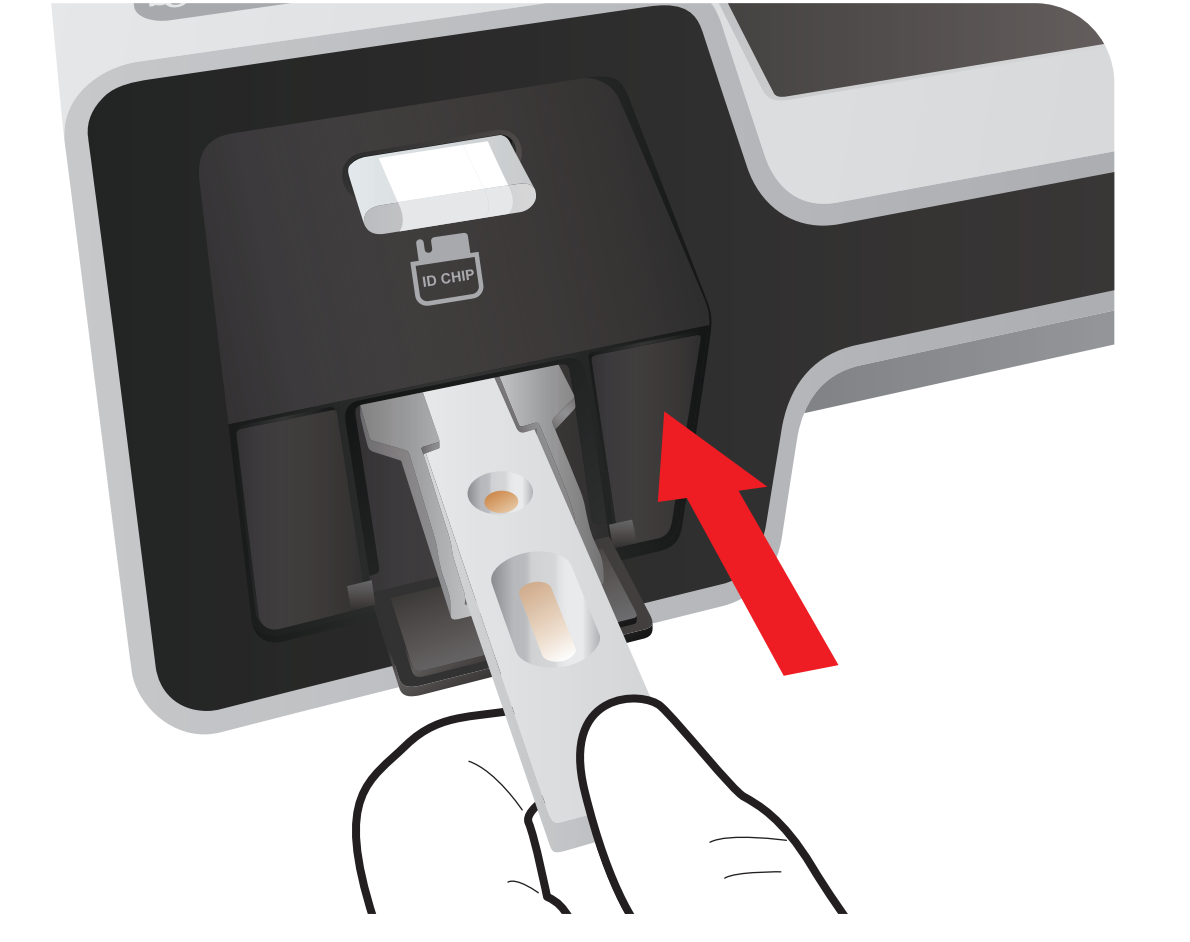
7 Load the sample mixture



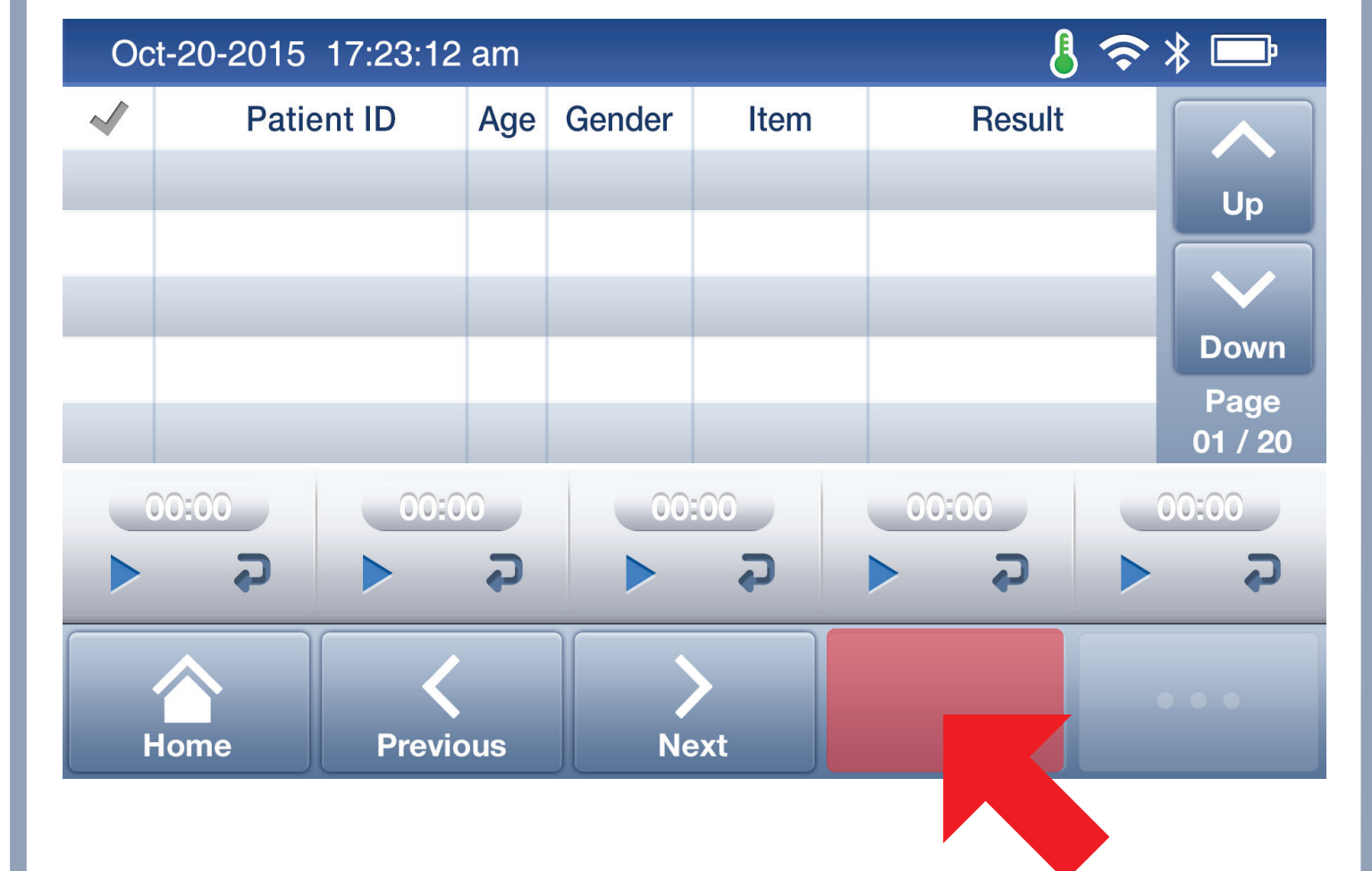
8 Waiting 12 minutes



9 Insert the cartridge into ichromaTM II Reader



10 Press 'Select'



11 Read the test result

