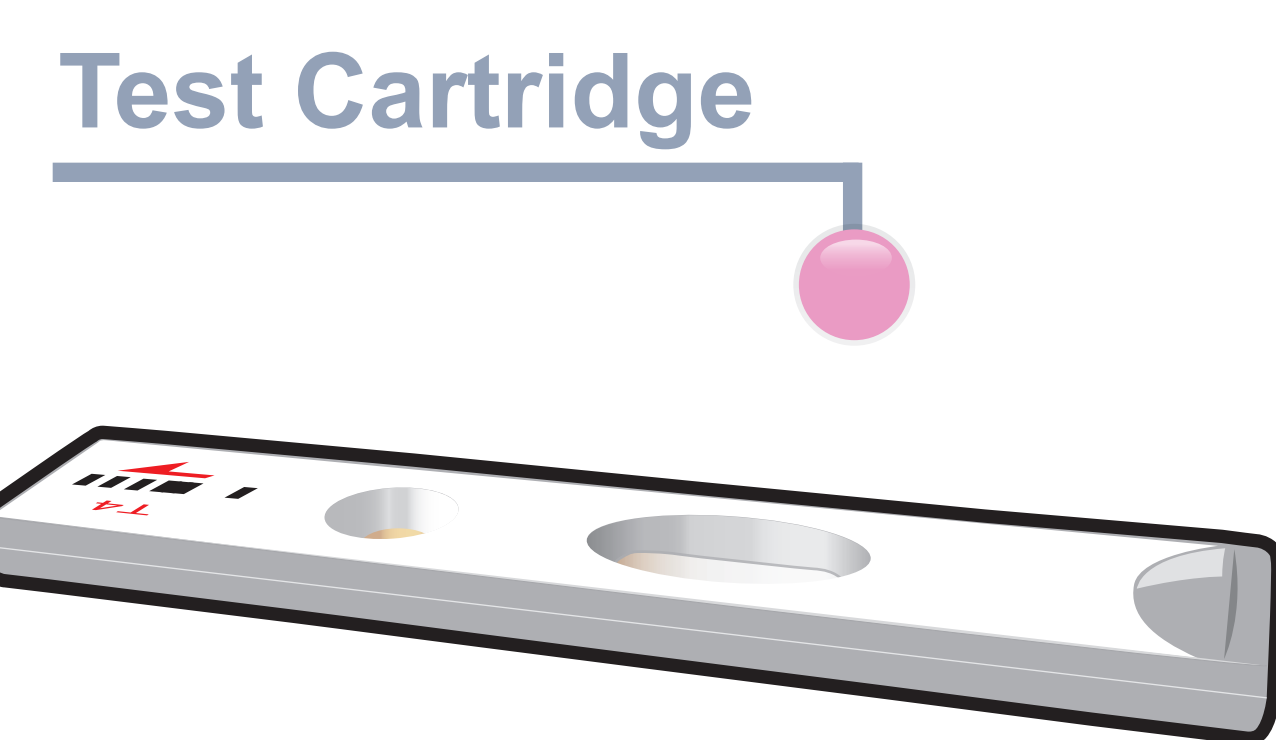
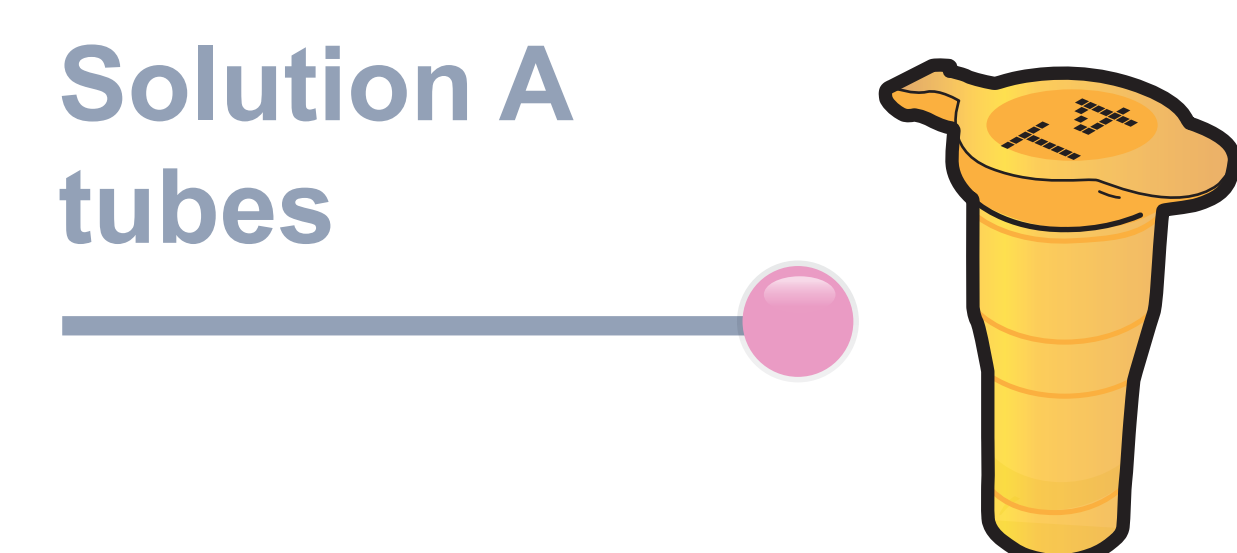
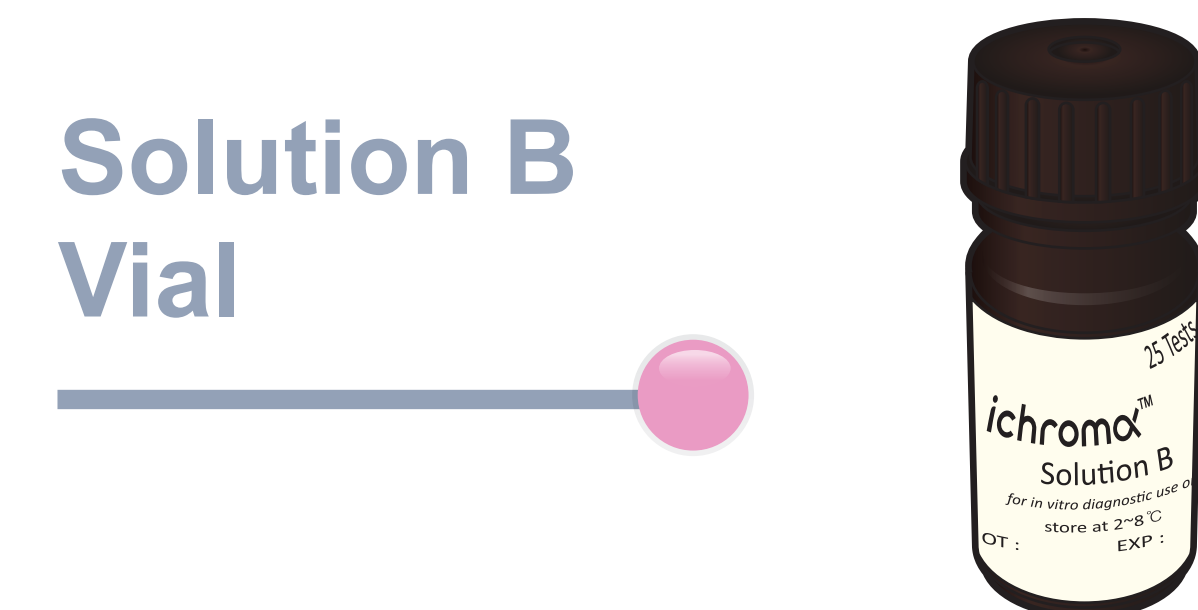
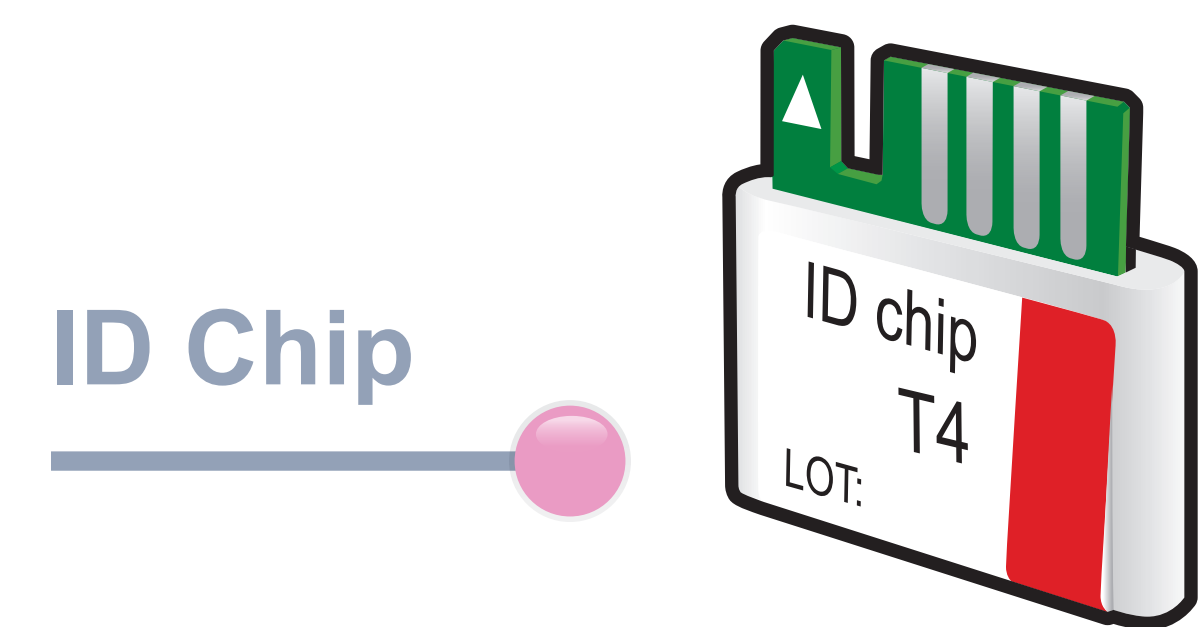


## Test Setup

### Test Components



iCHROMA™ II Reader

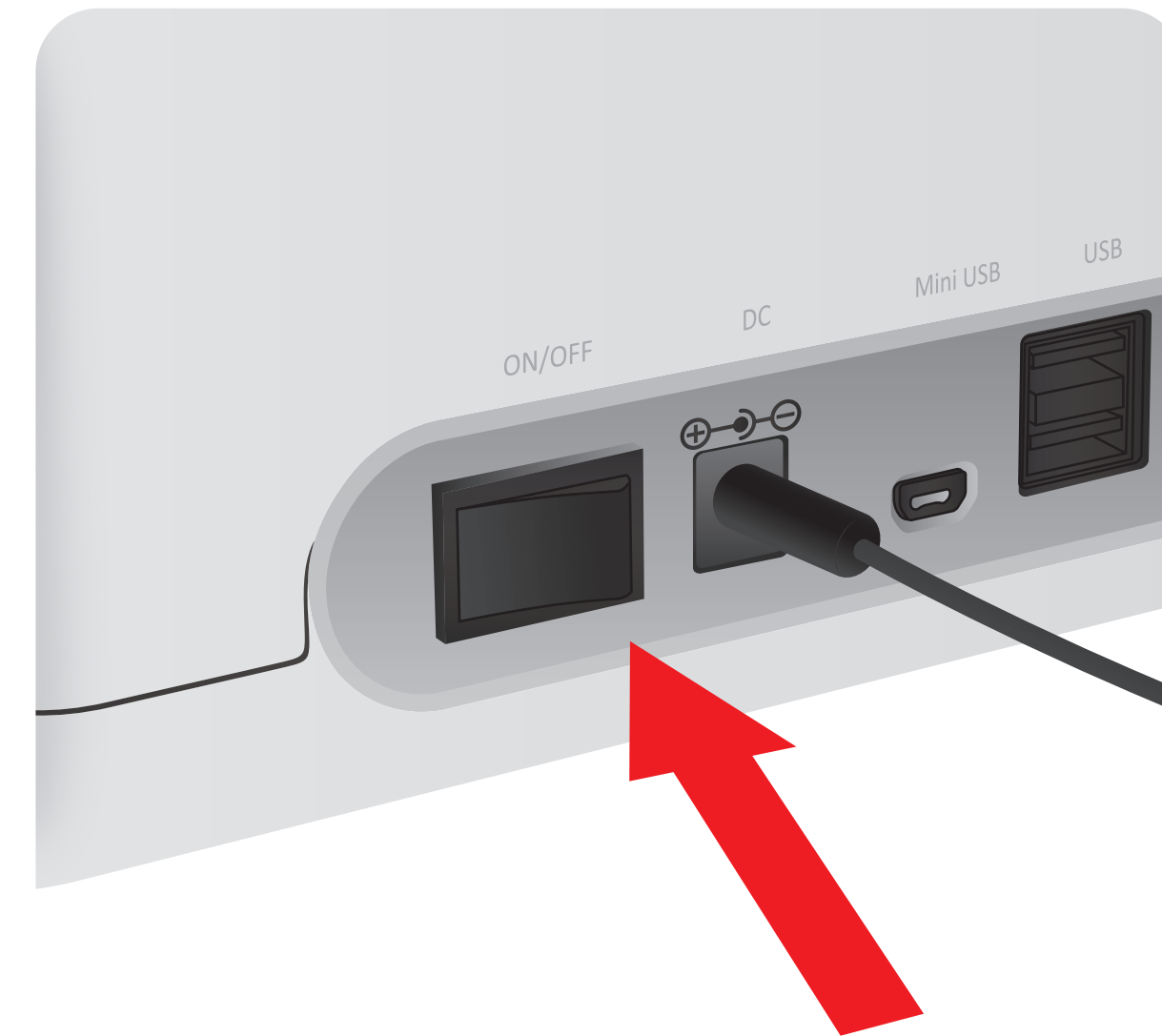


### Important

Allow 'solution A, B' to attain room temperature at least for 30 minutes before performing the test

Make sure that lot number of the 'ID Chip' is exactly same as the lot number of 'Test Cartridge' and 'Detection Buffer Tube'

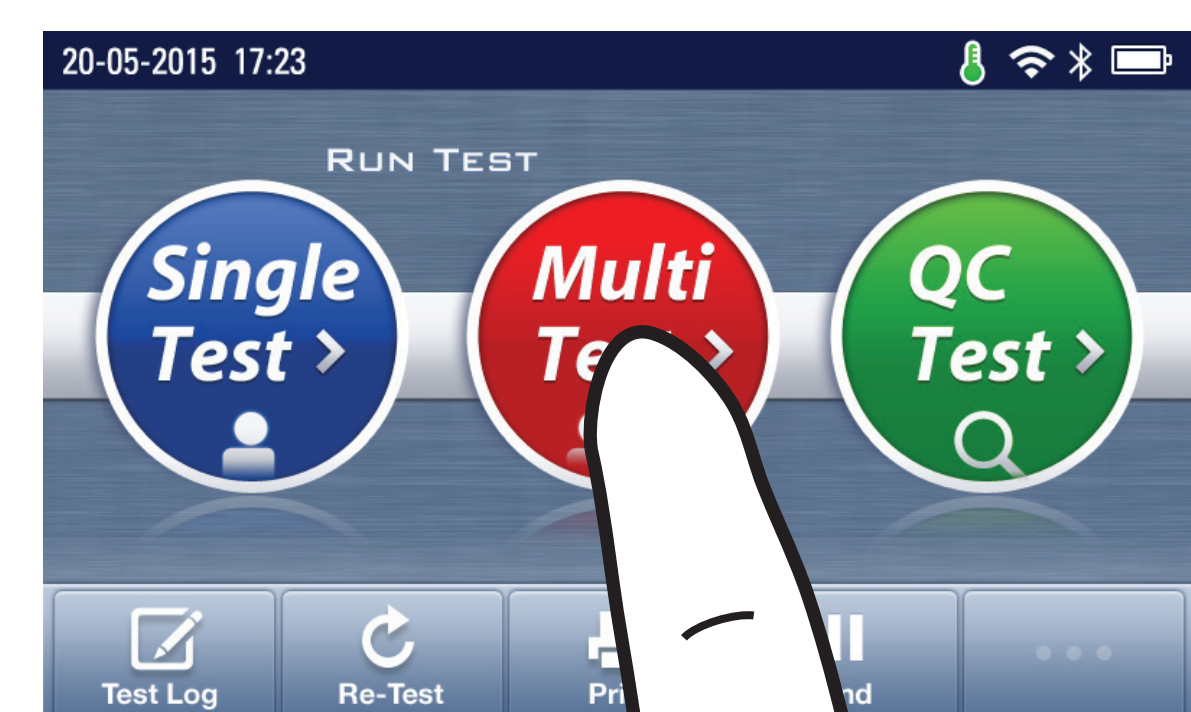
**1** Turn the power switch 'On'



**2** Insert ID Chip

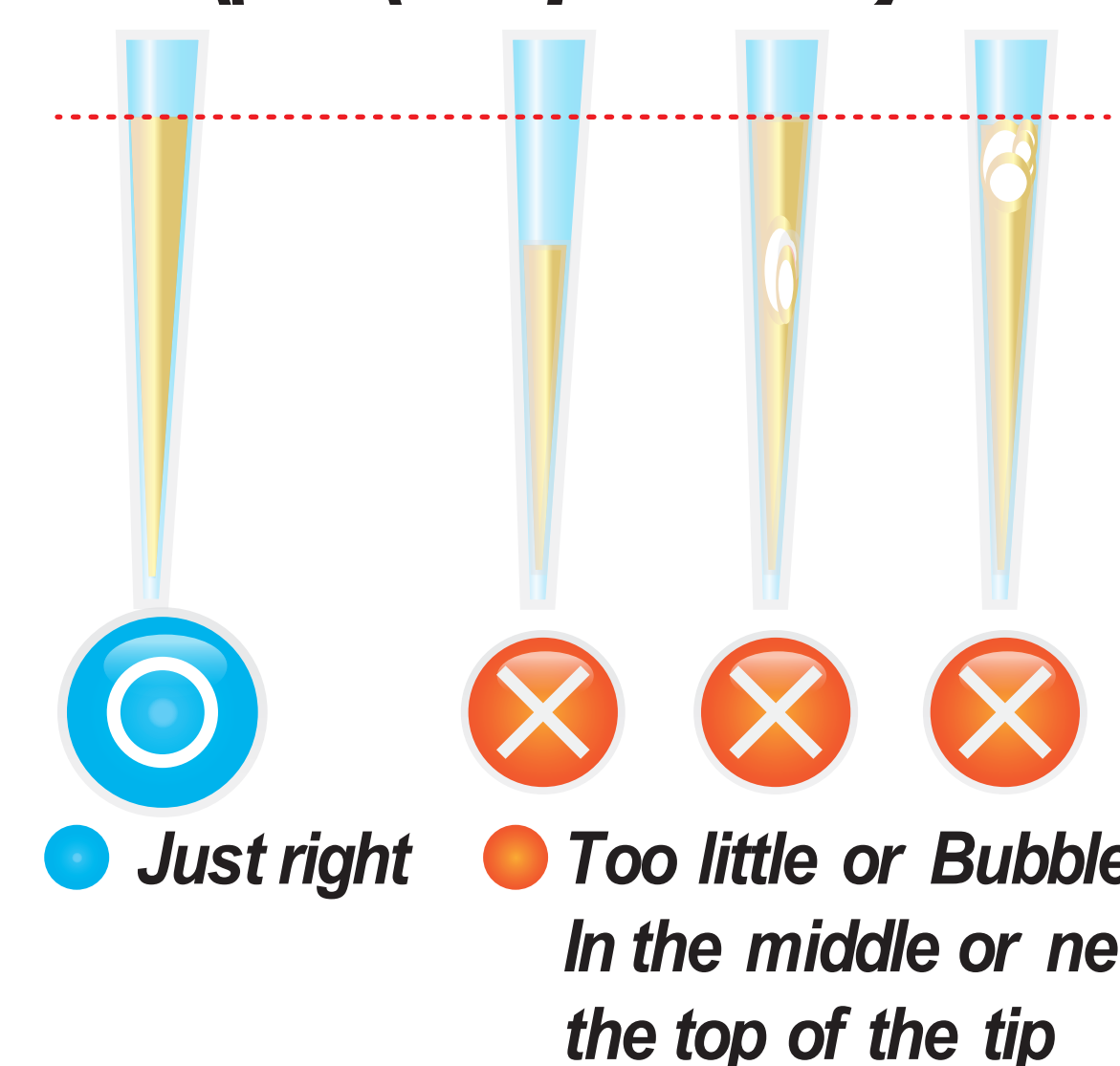
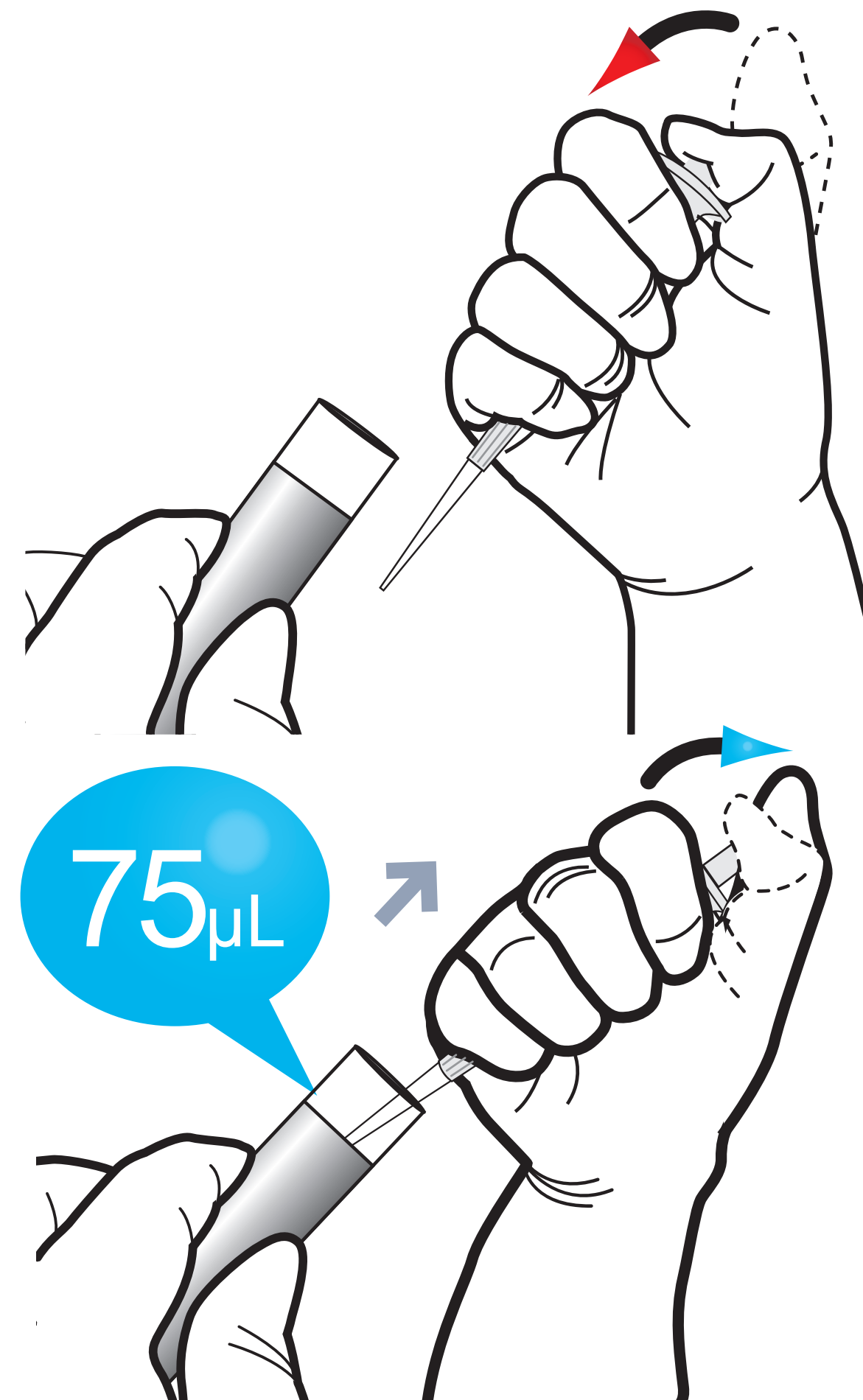


**3** Press 'Multi-test'

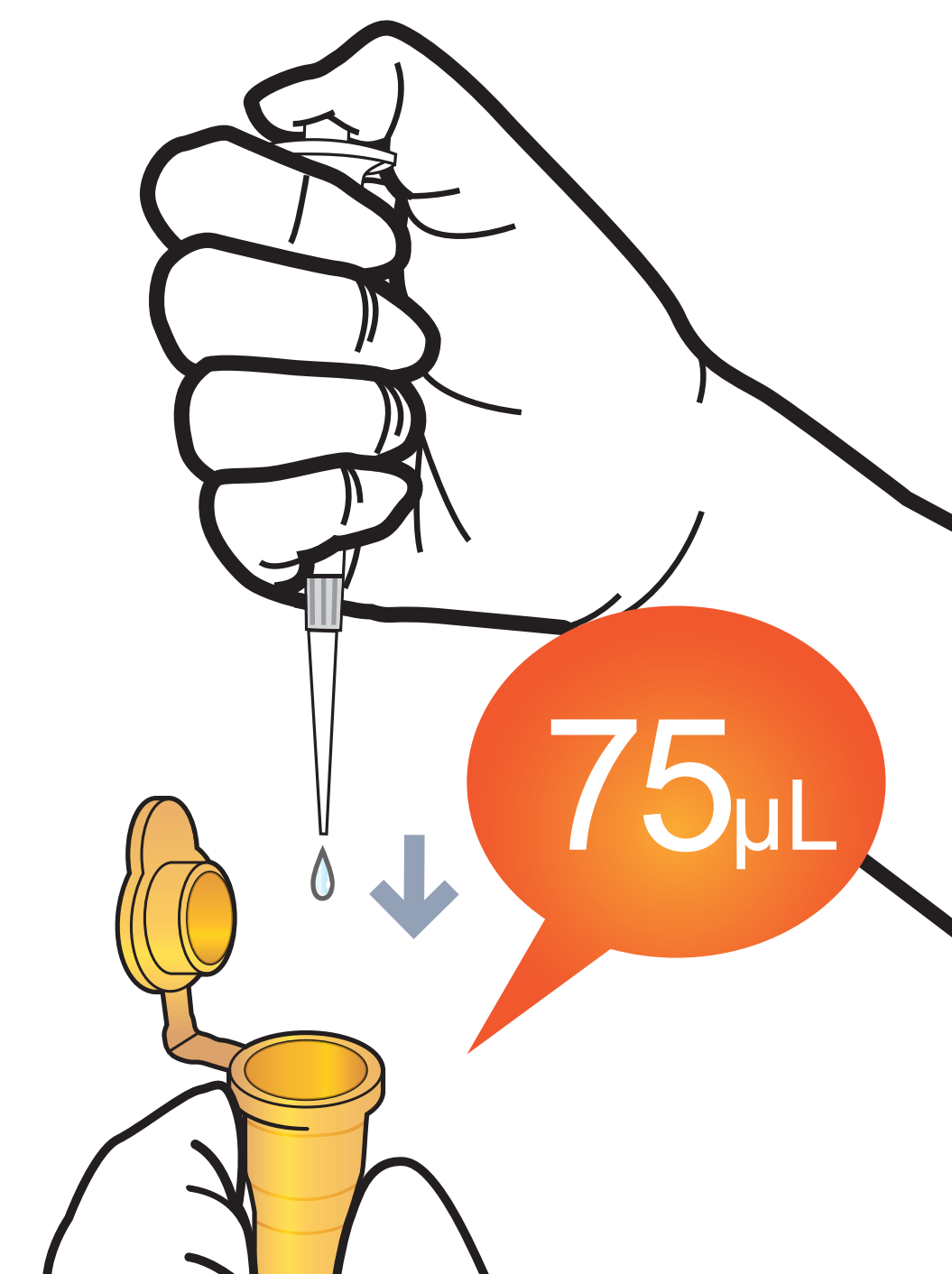


## Test Procedure

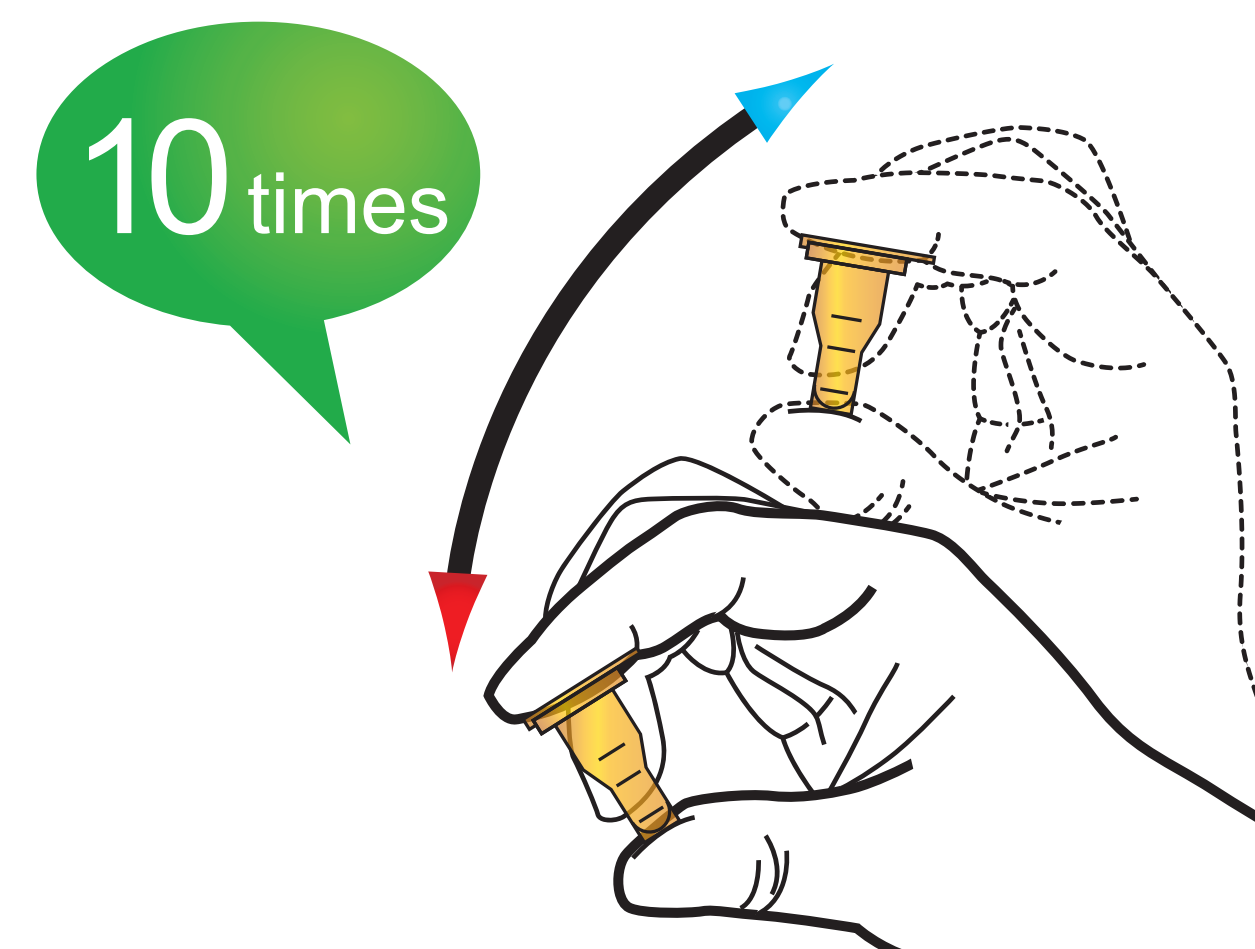
**1** Draw 75  $\mu$ L (Serum / Plasma / Control)



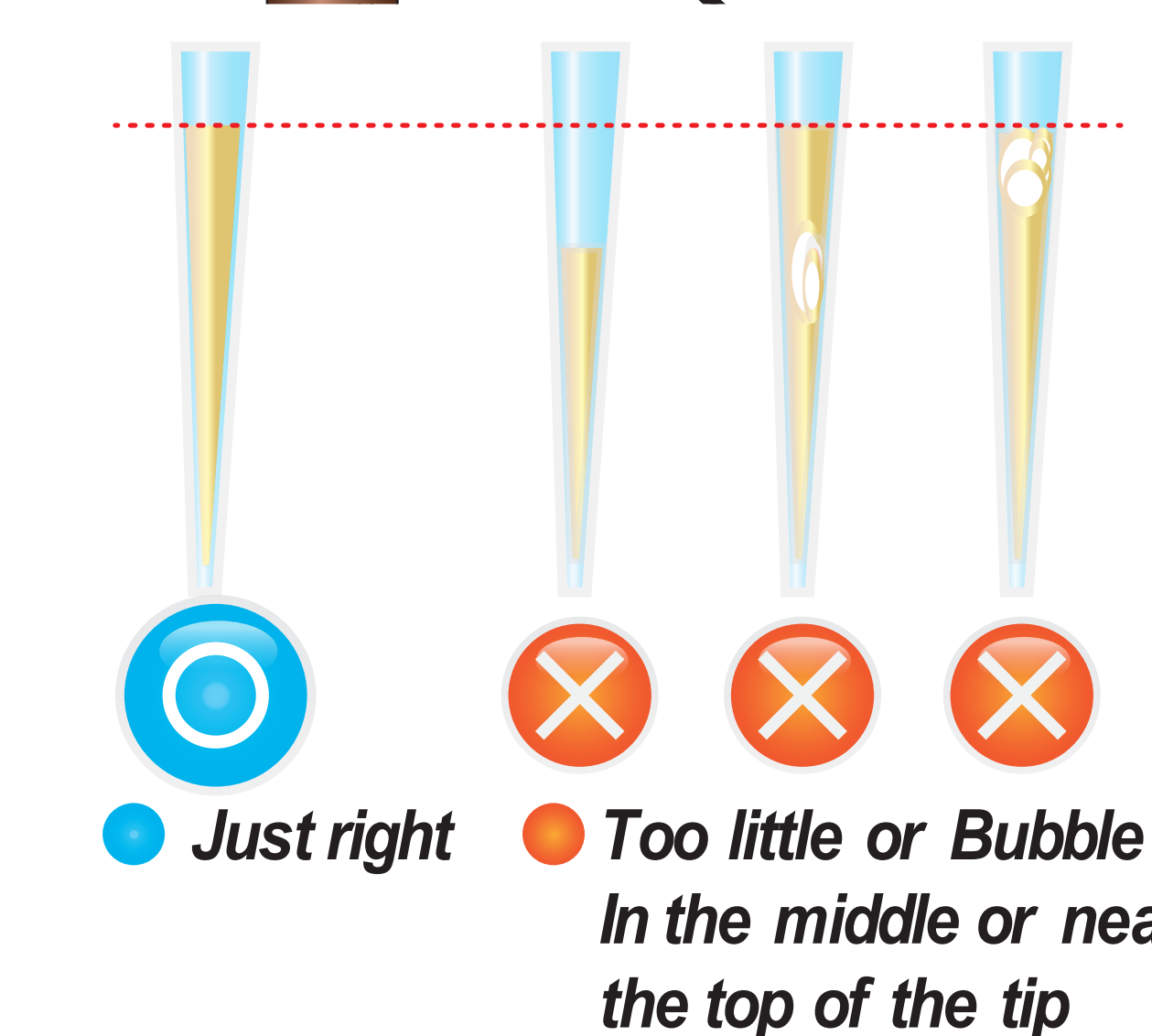
**2** Add it into solution A tube



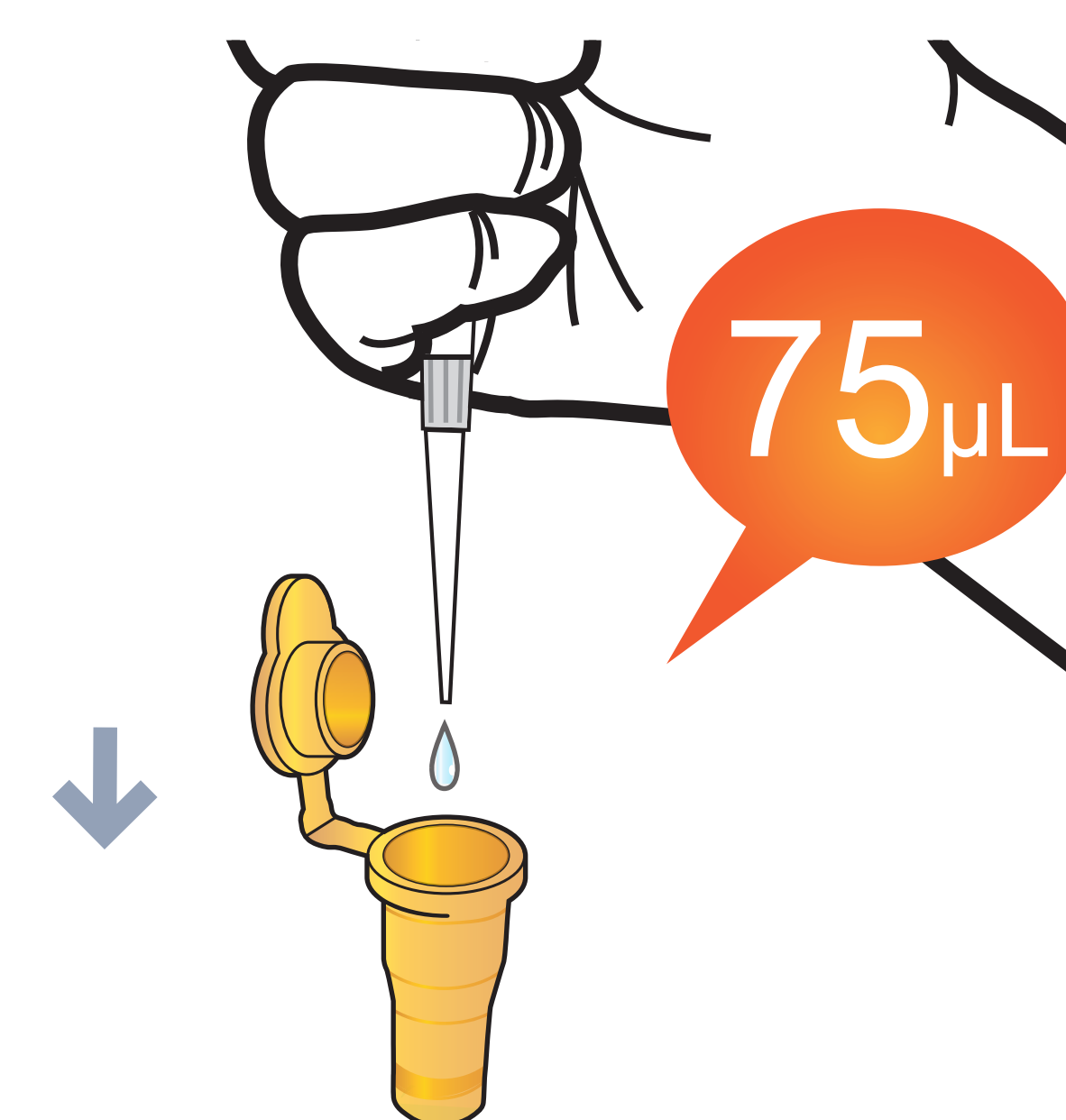
**3** Shake the solution A tube



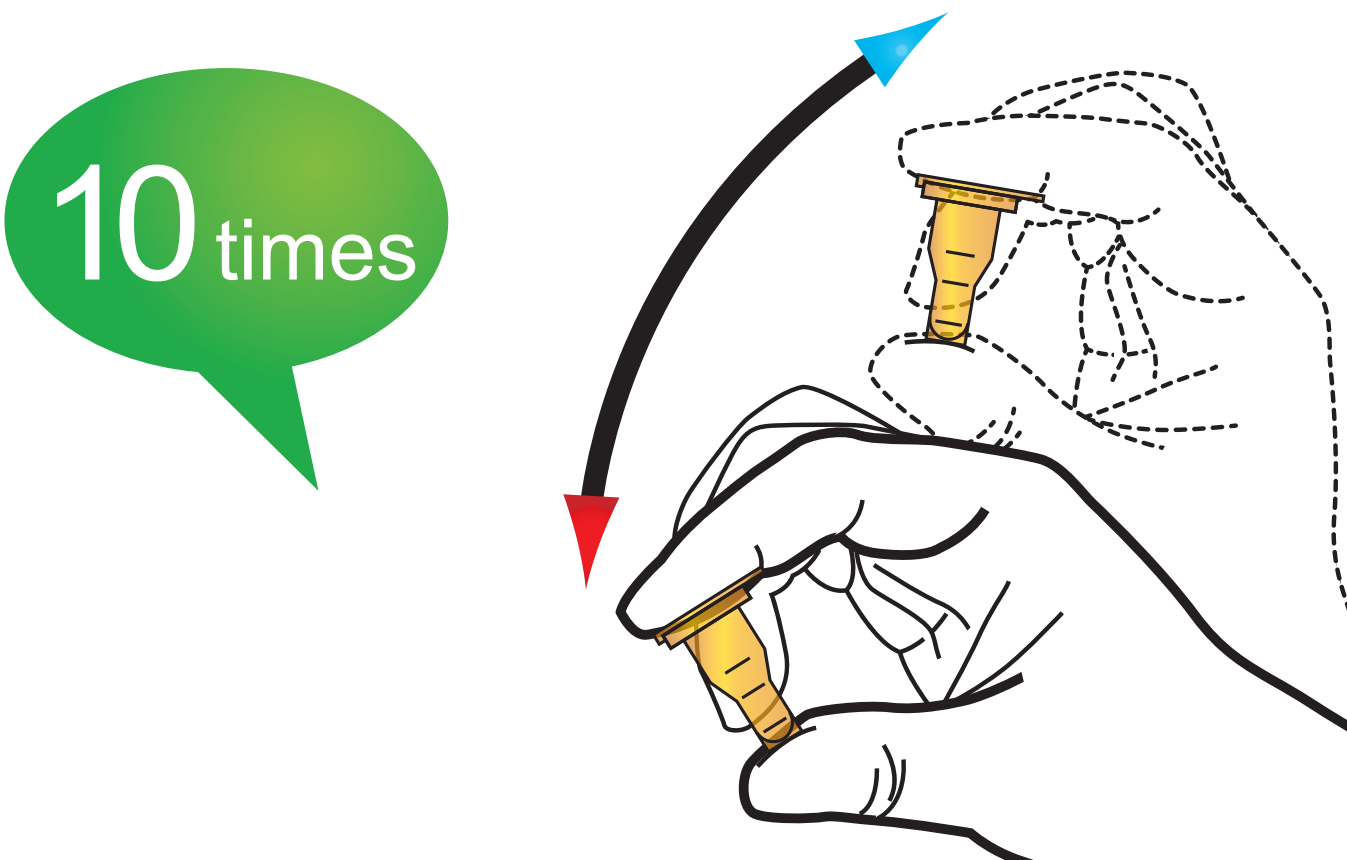
**4** Draw 75  $\mu$ L (Solution B vial)



**5** Add it into solution A tube



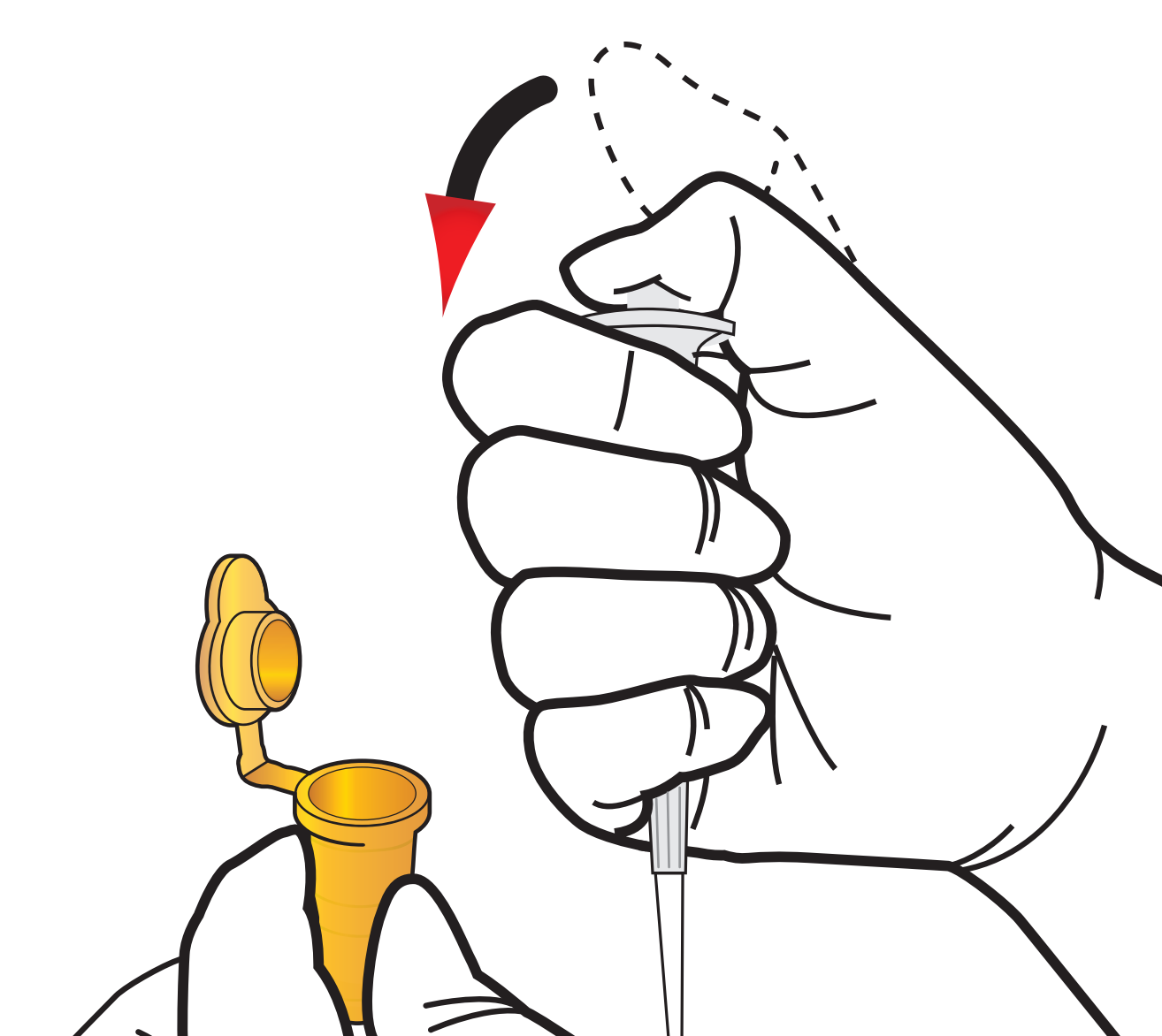
**6** Shake the solution A tube



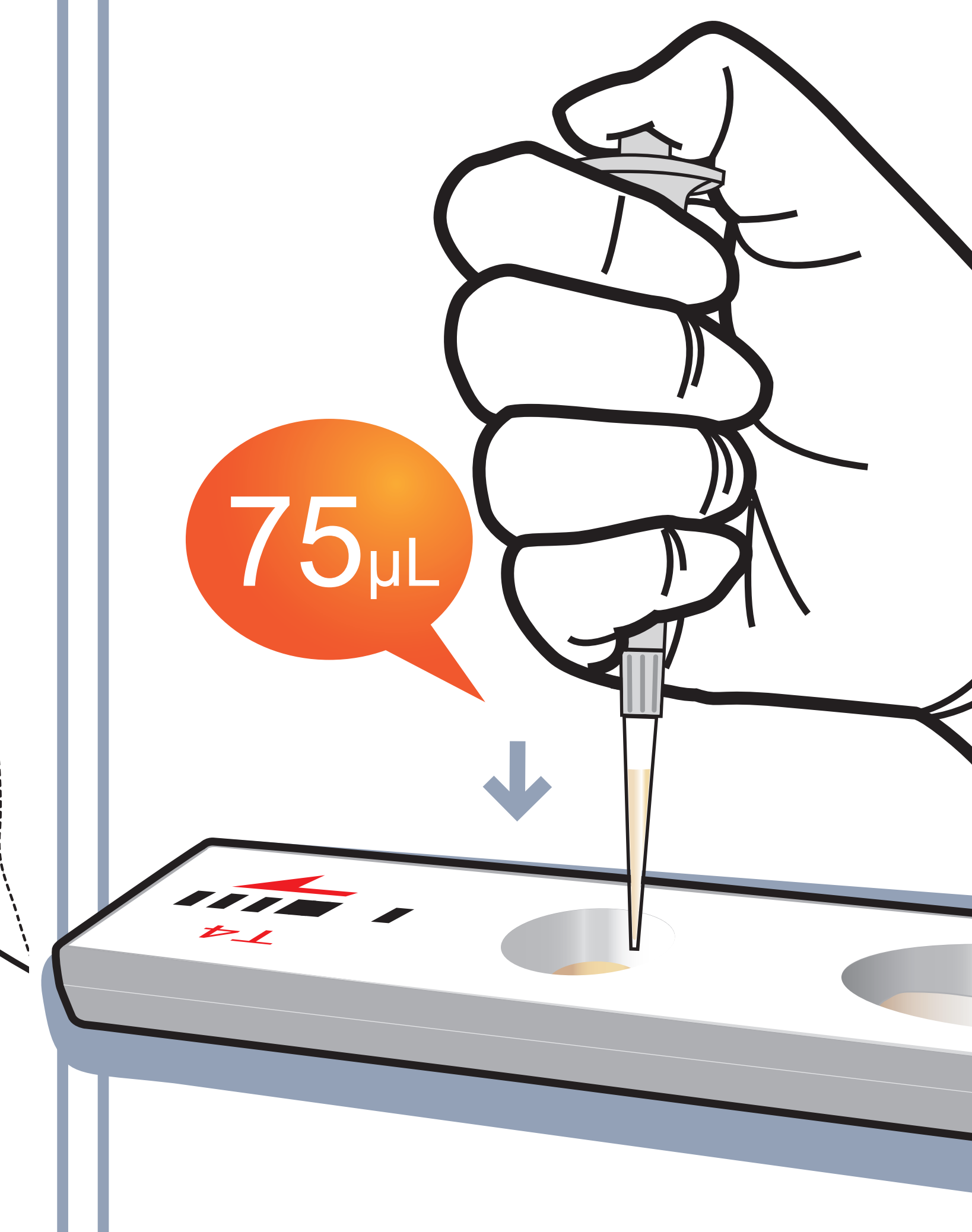
**7** Stand for 8 minutes



**8** Draw the sample mixture



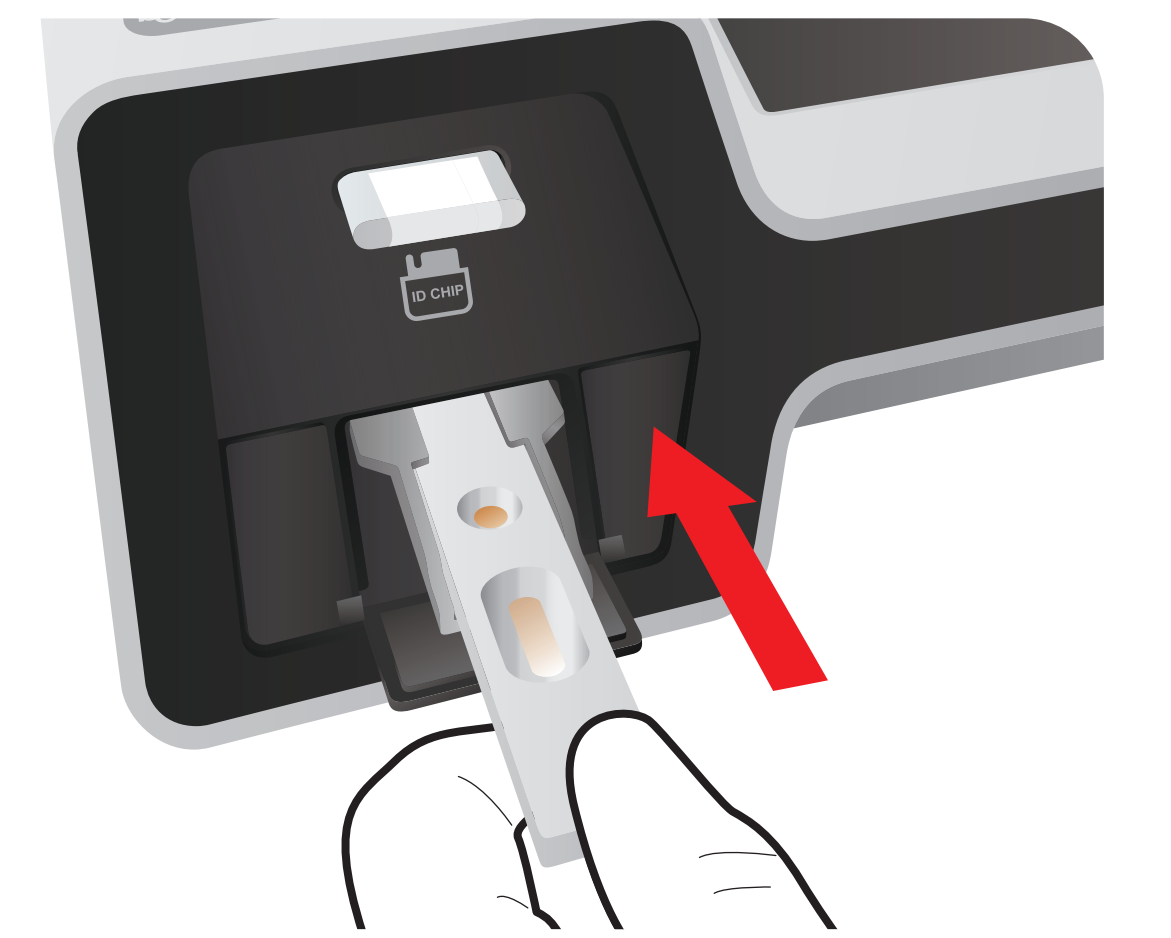
**9** Load the sample mixture



**10** Waiting 8 minutes

Maintain 25°C degrees

**11** Insert the cartridge into ichroma™ II Reader



**12** Press 'Select'



**13** Read the test result

