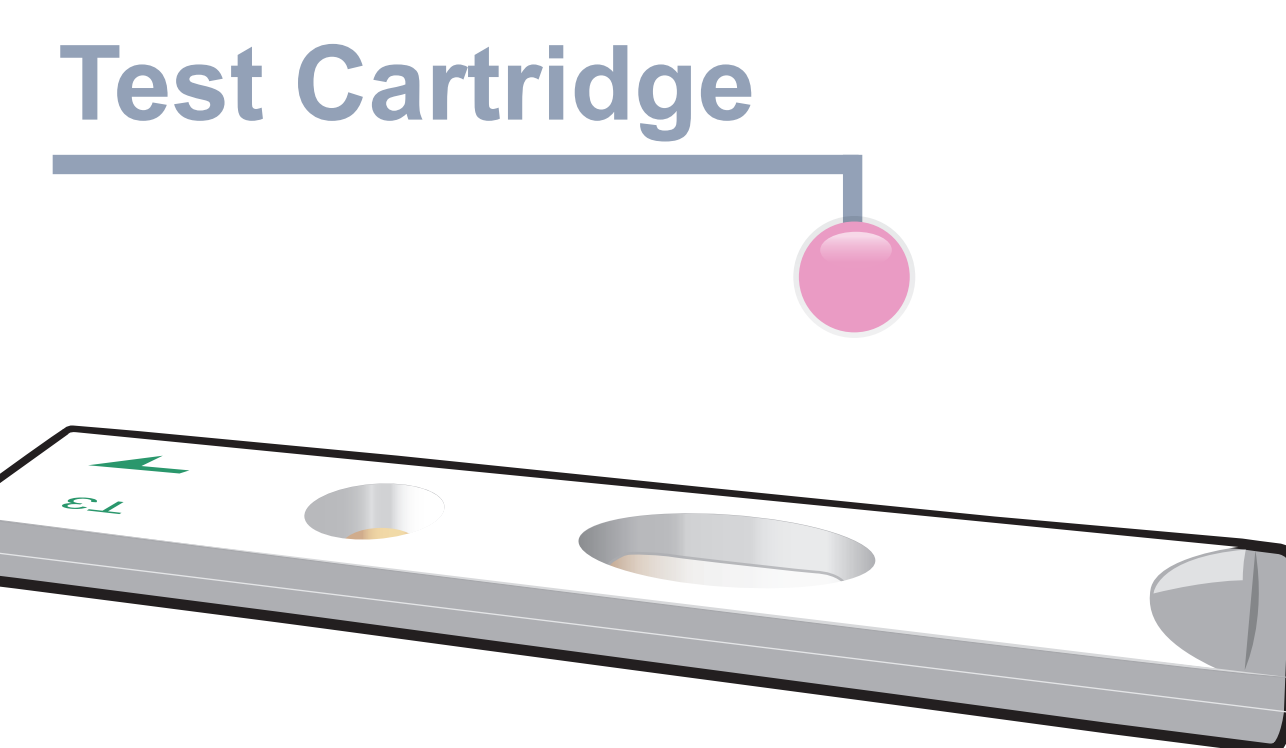
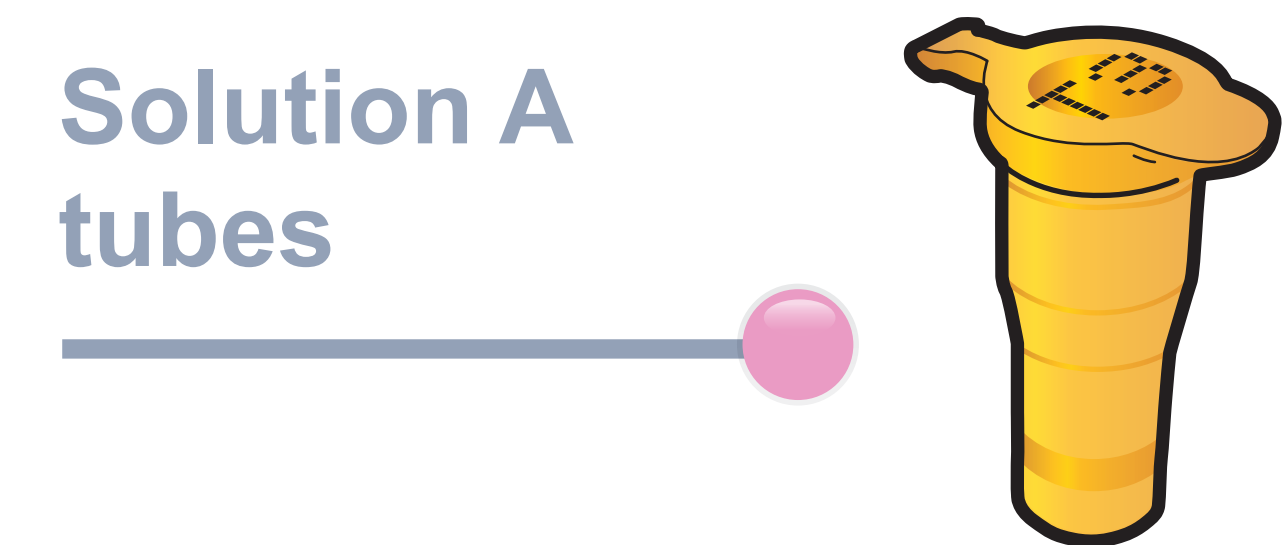
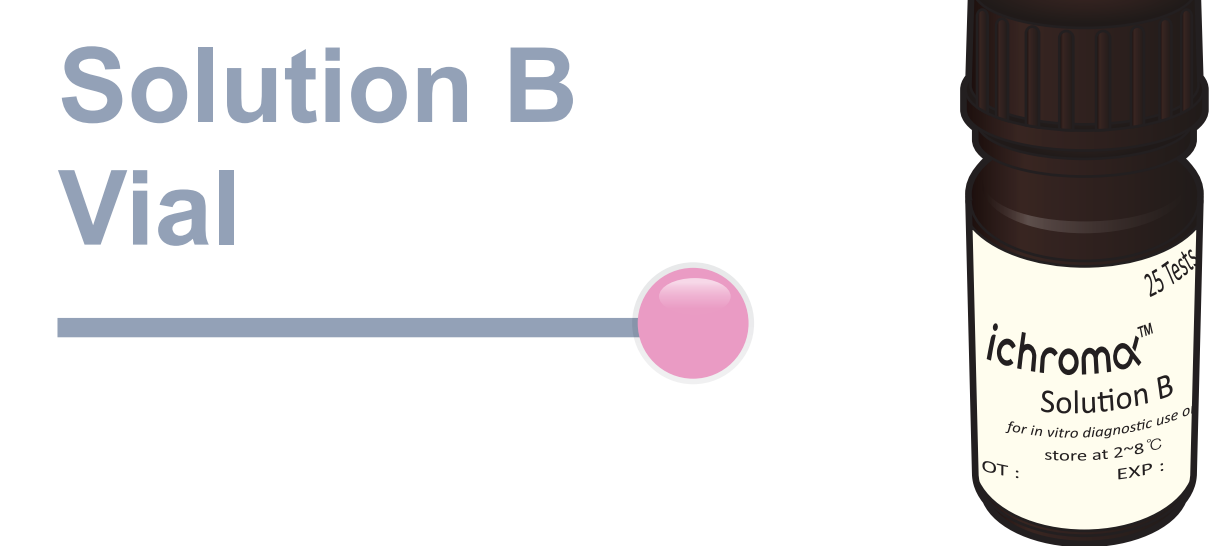
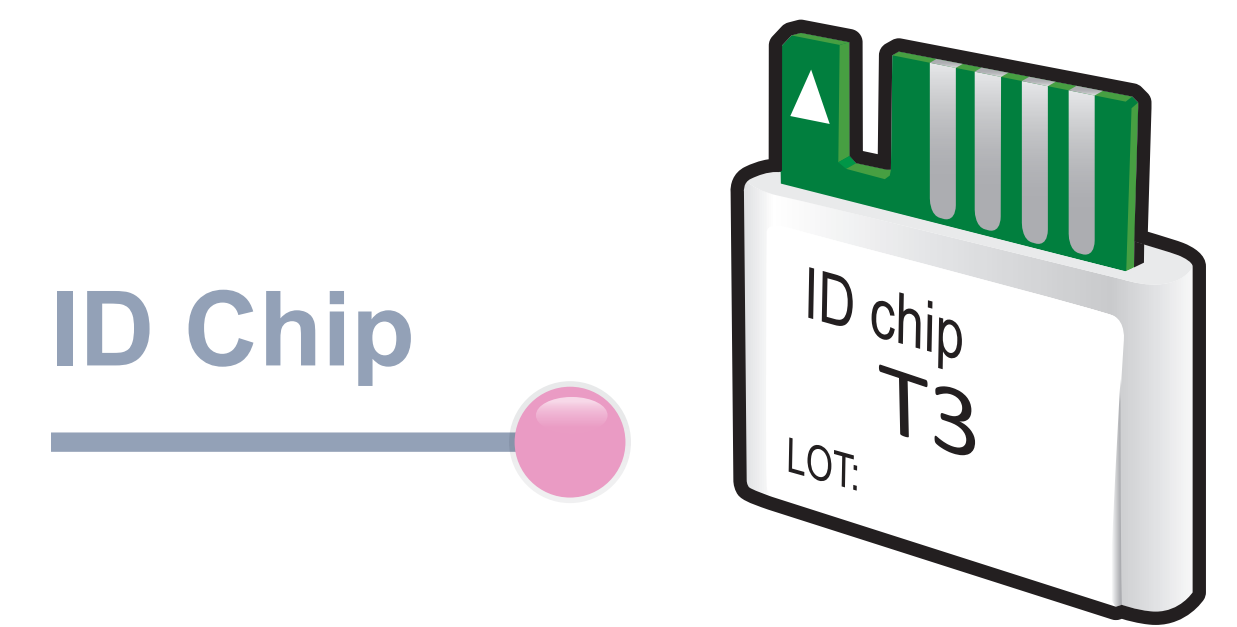


ichroma™ T3

Test Setup

Test Components



iCHROMA II Reader

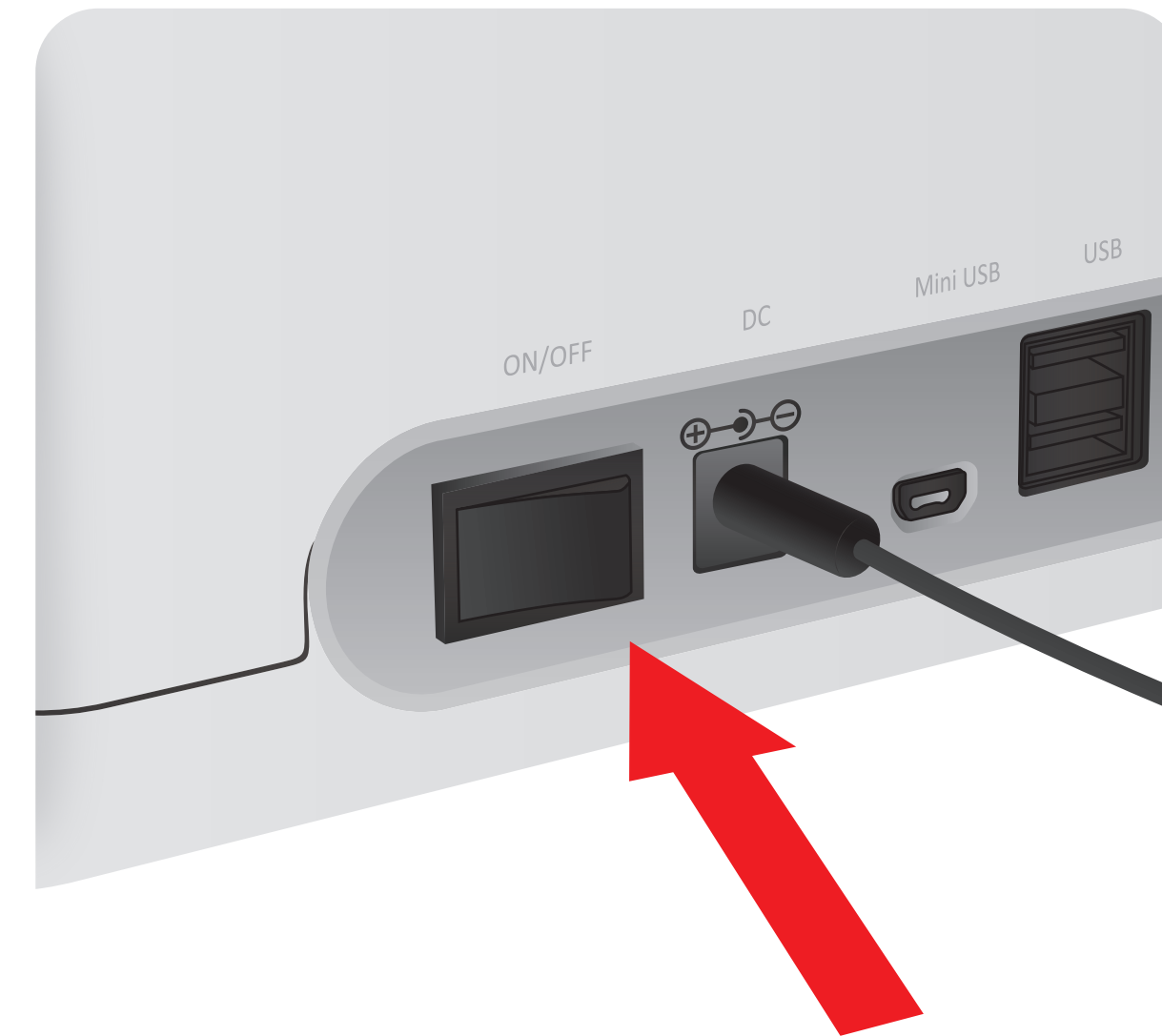


Important

Allow 'solution A, B' to attain room temperature at least for 30 minutes before performing the test

Make sure that lot number of the 'ID Chip' is exactly same as the lot number of 'Test Cartridge' and 'Detection Buffer Tube'

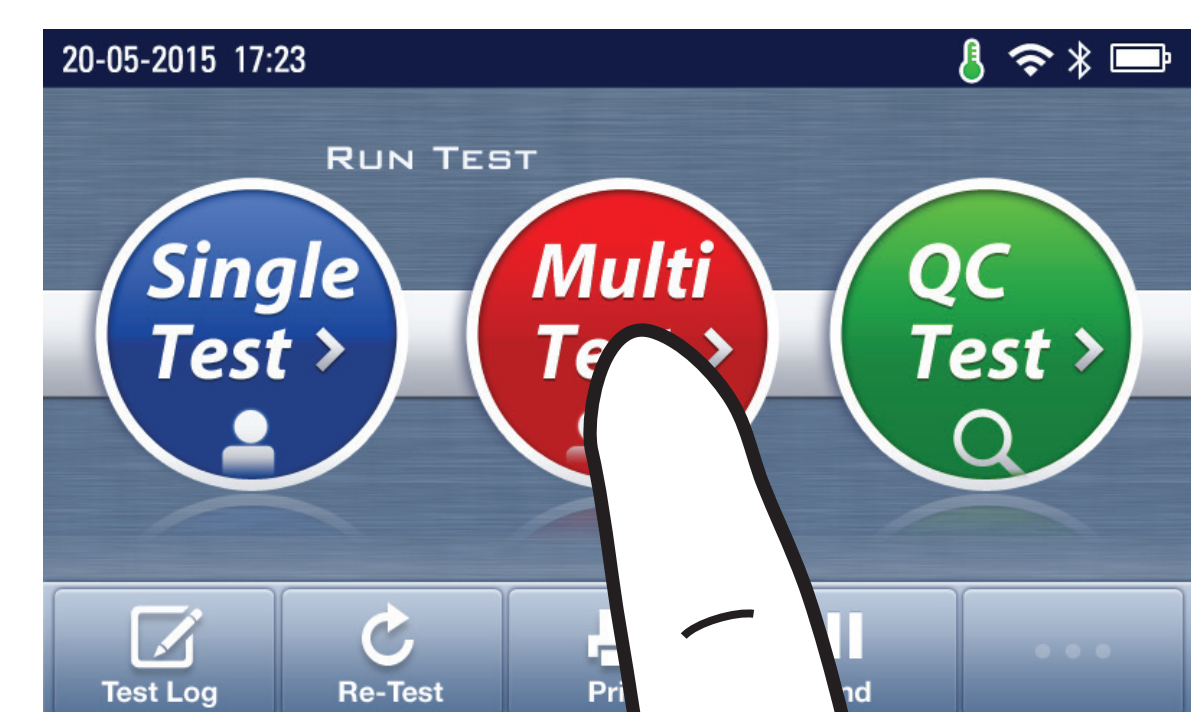
1 Turn the power switch 'On'



2 Insert ID Chip

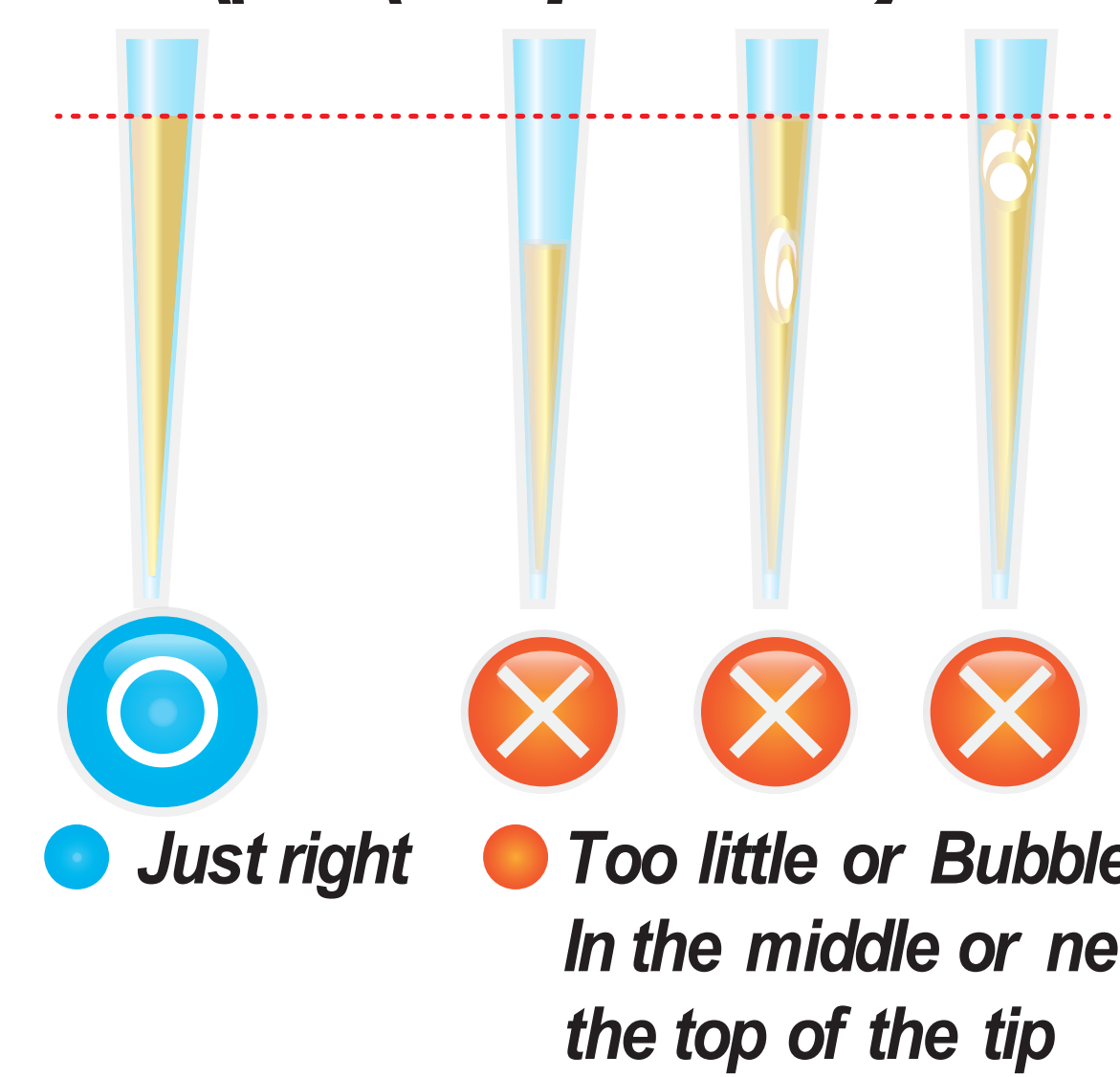
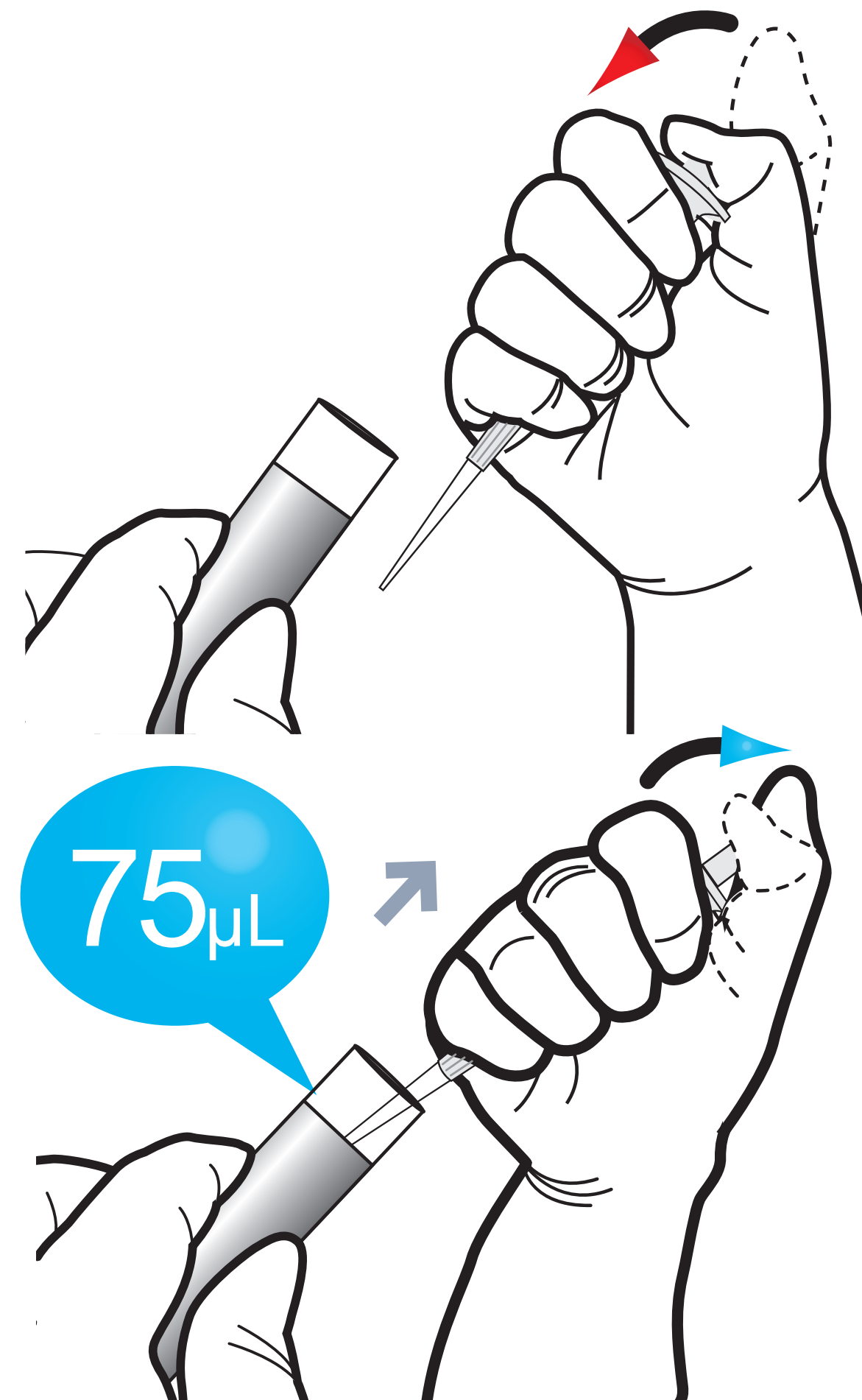


3 Press 'Multi-test'

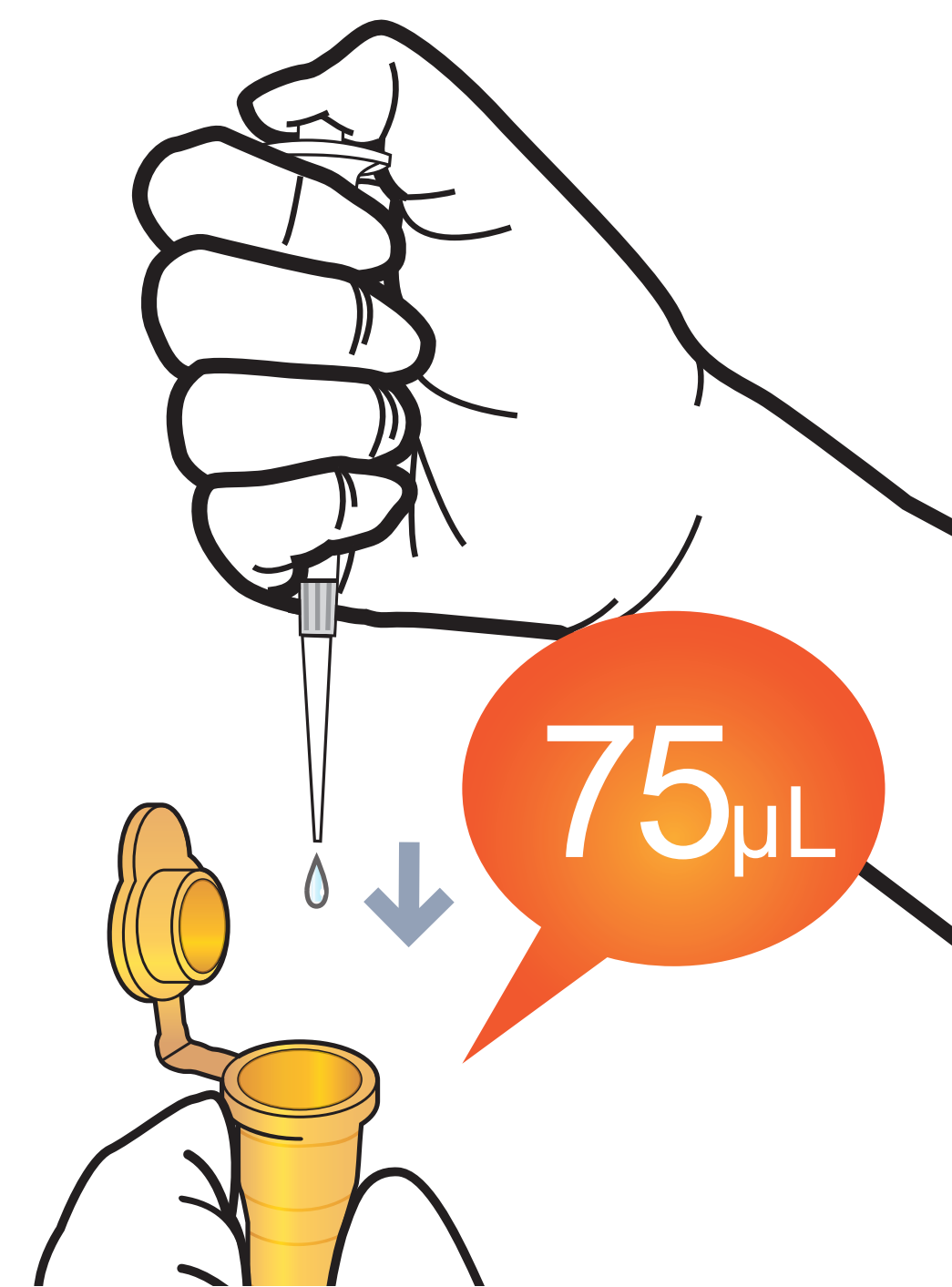


Test Procedure

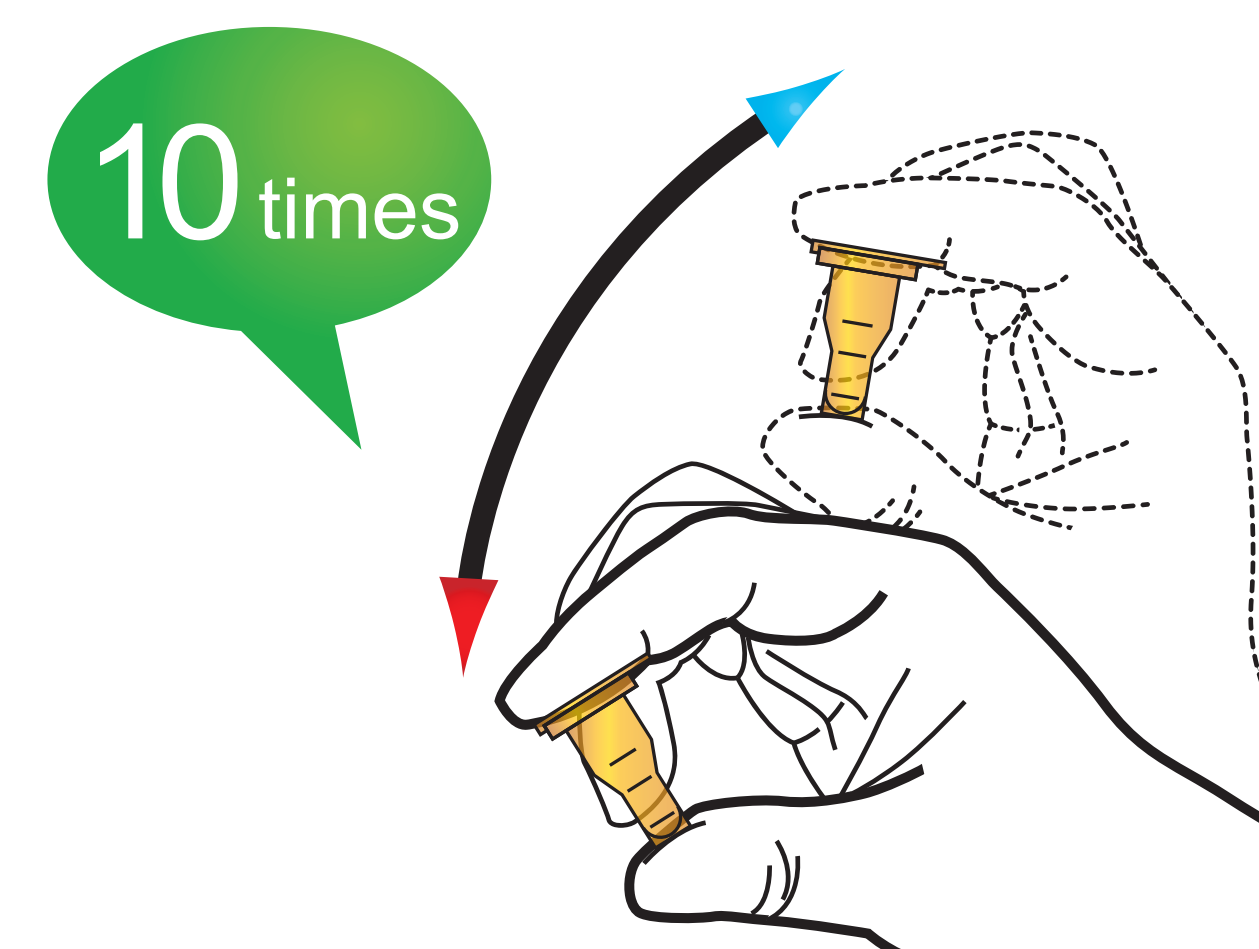
1 Draw 75 μ L (Serum / Plasma / Control)



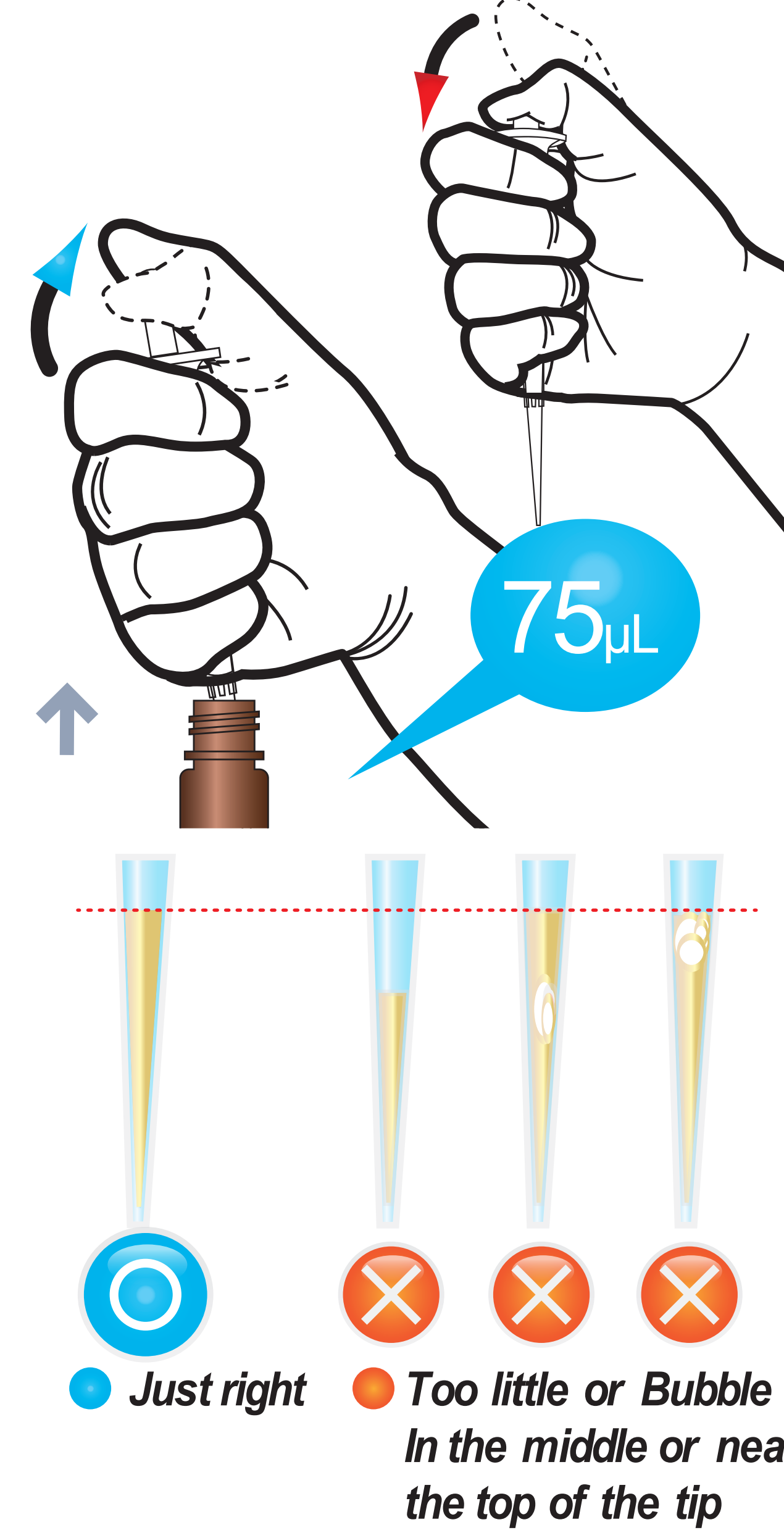
2 Add it into solution A tube



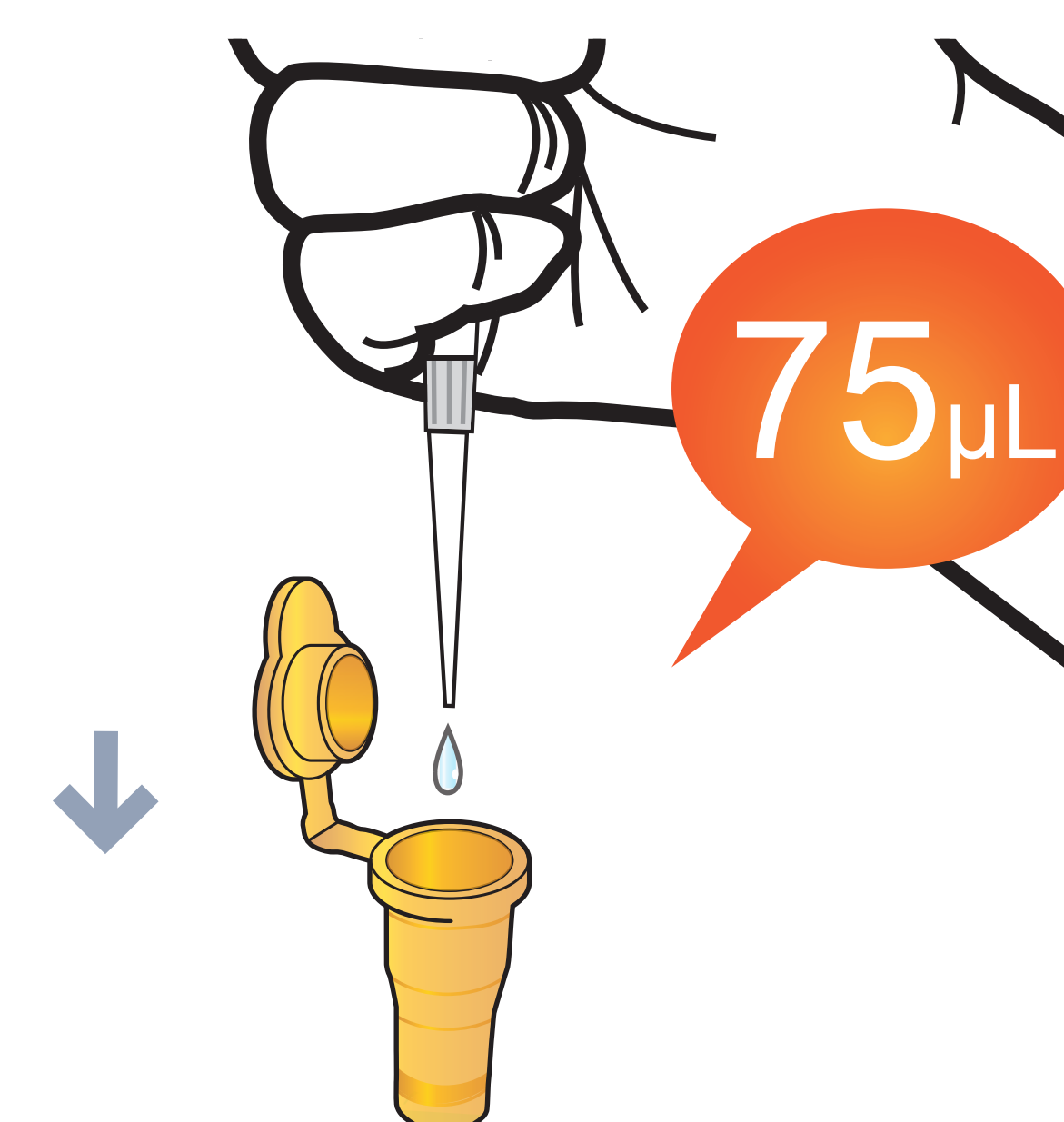
3 Shake the solution A tube



4 Draw 75 μ L (Solution B vial)



5 Add it into solution A tube



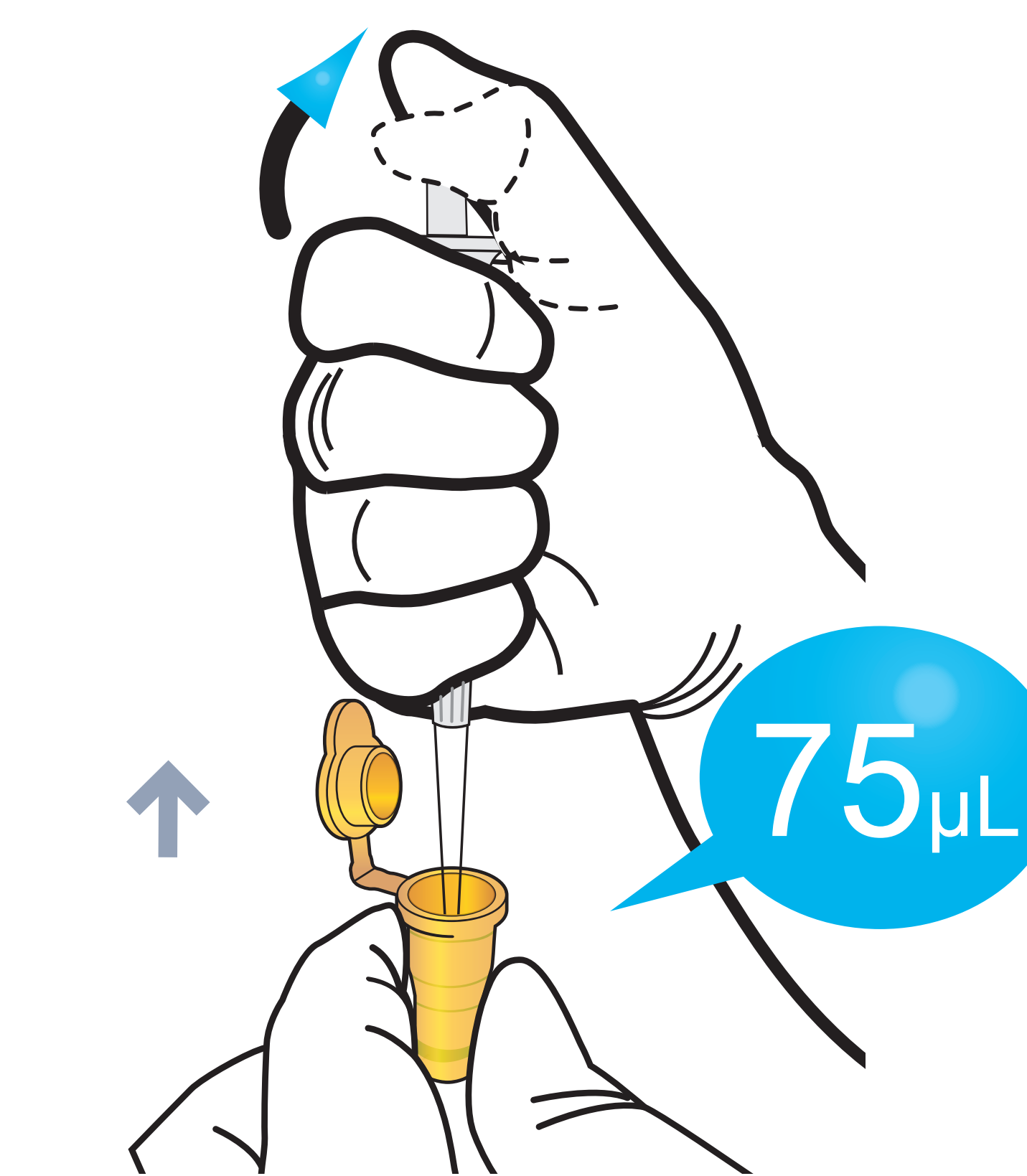
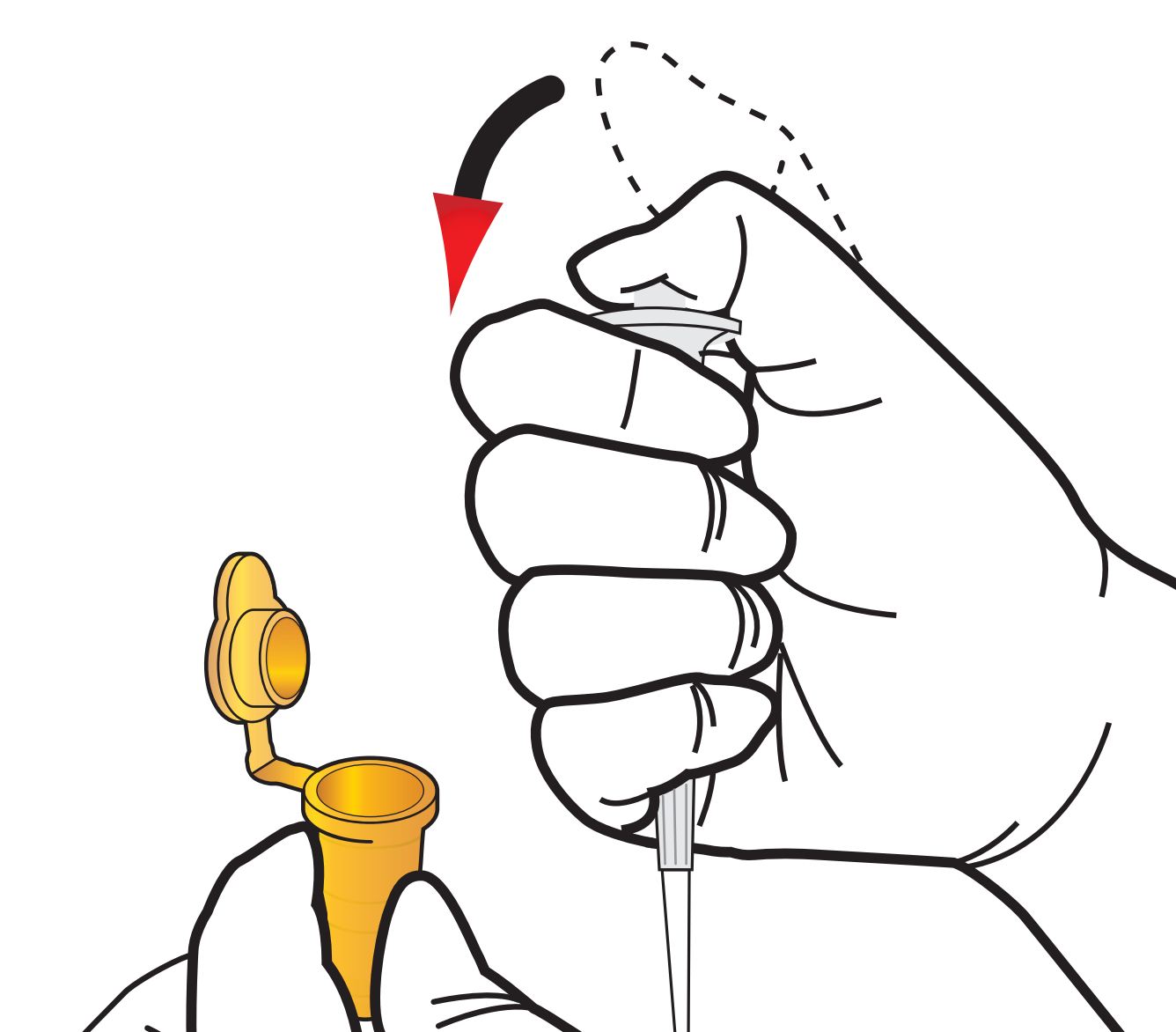
6 Shake the solution A tube



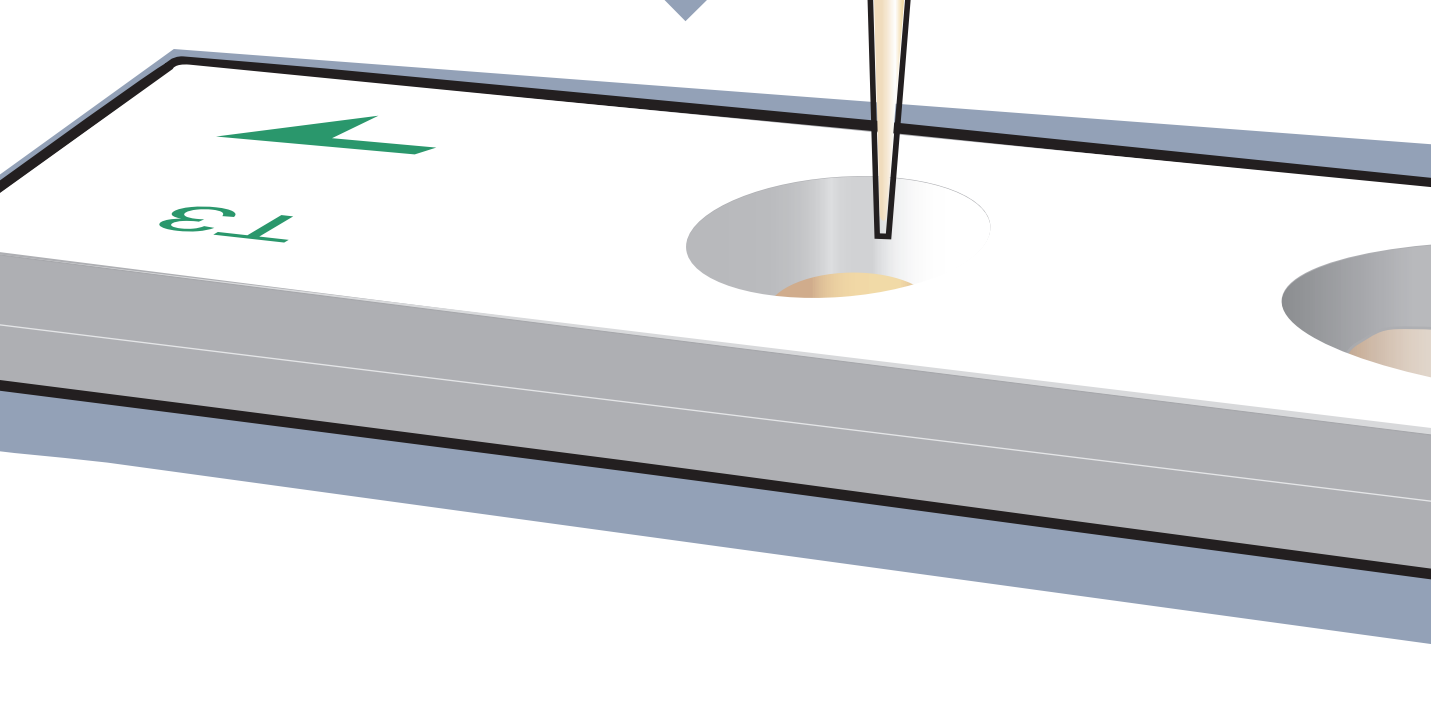
7 Stand for 8 minutes



8 Draw the sample mixture

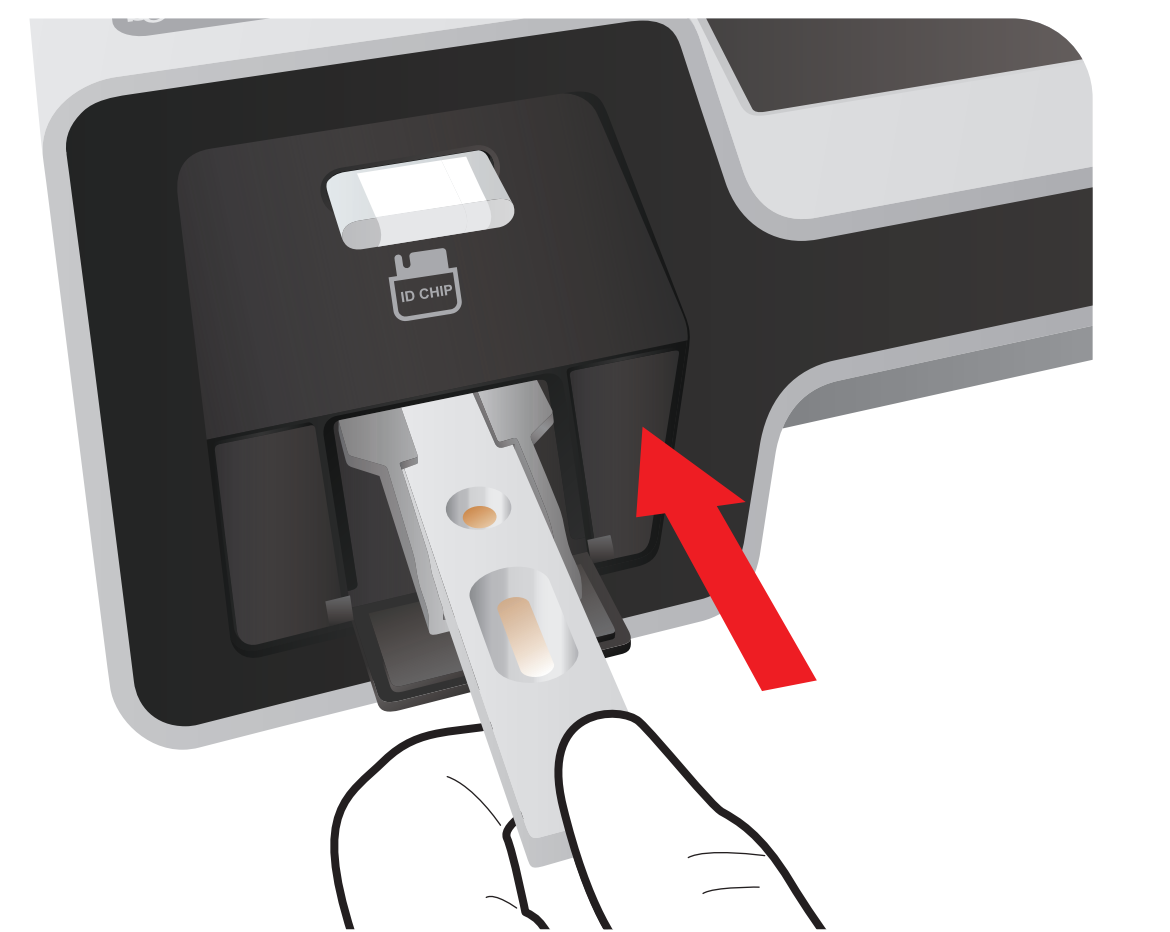


9 Load the sample mixture

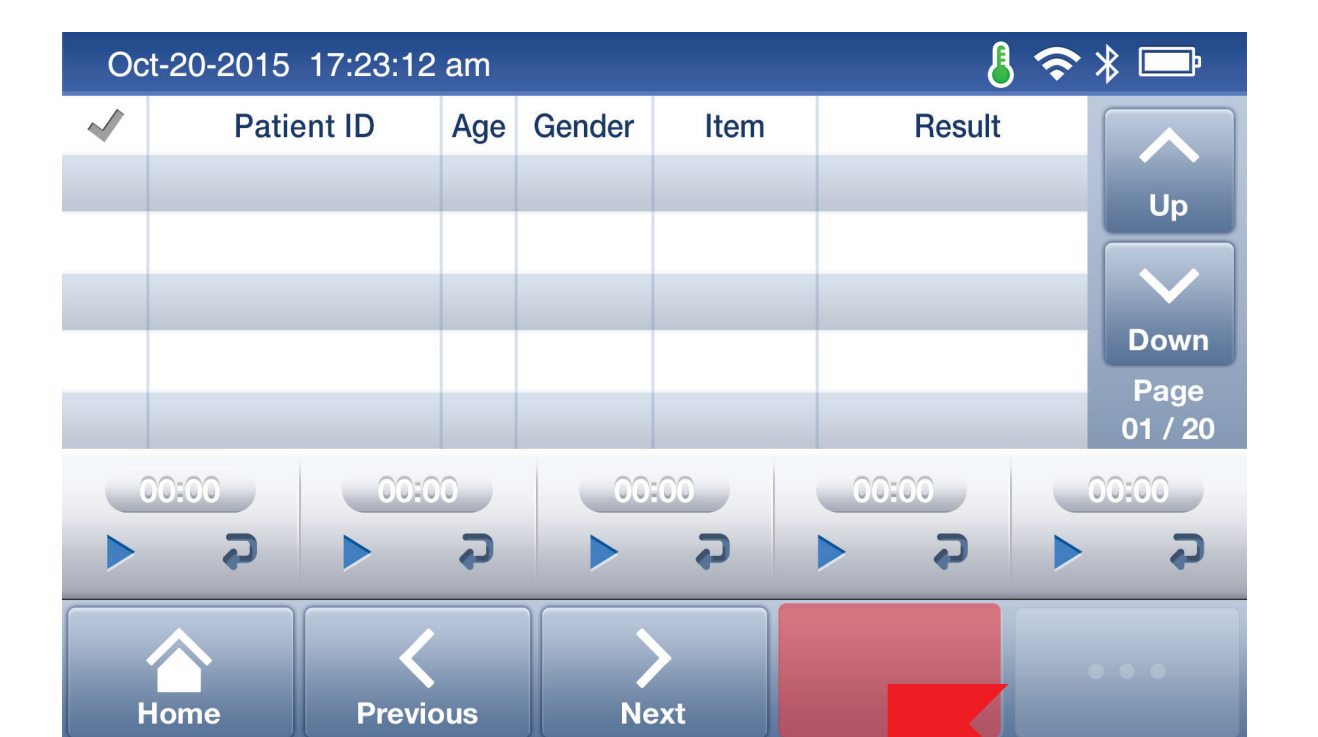


10 Waiting 8 minutes
Maintain 25°C degrees

11 Insert the cartridge into ichroma™ II Reader



12 Press 'Select'



13 Read the test result

