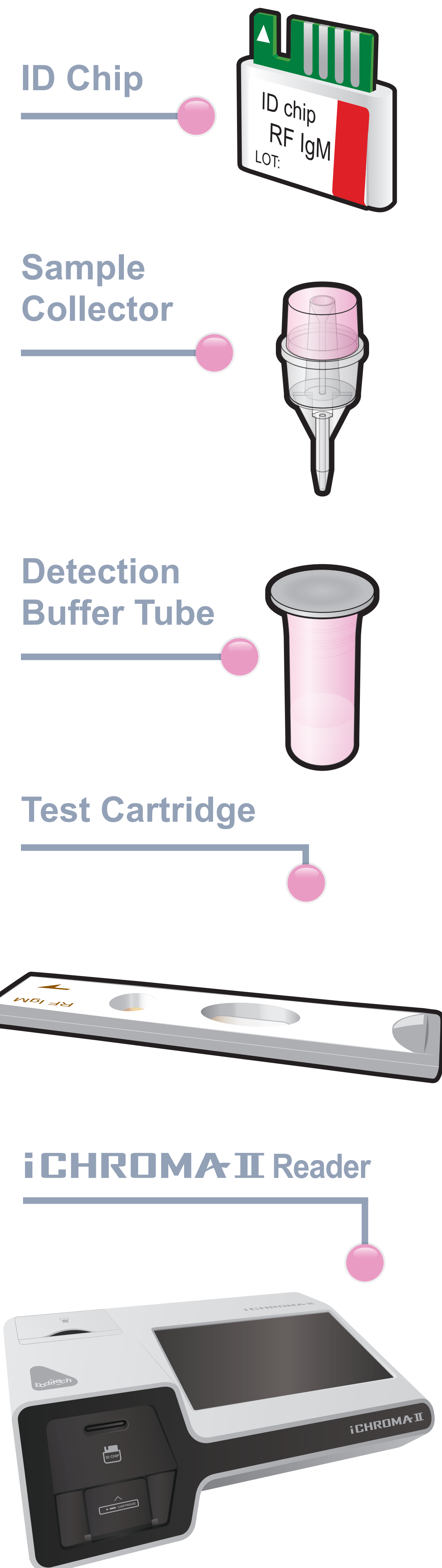


# ichroma<sup>TM</sup> RF IgM

## Test Setup

### Test Components

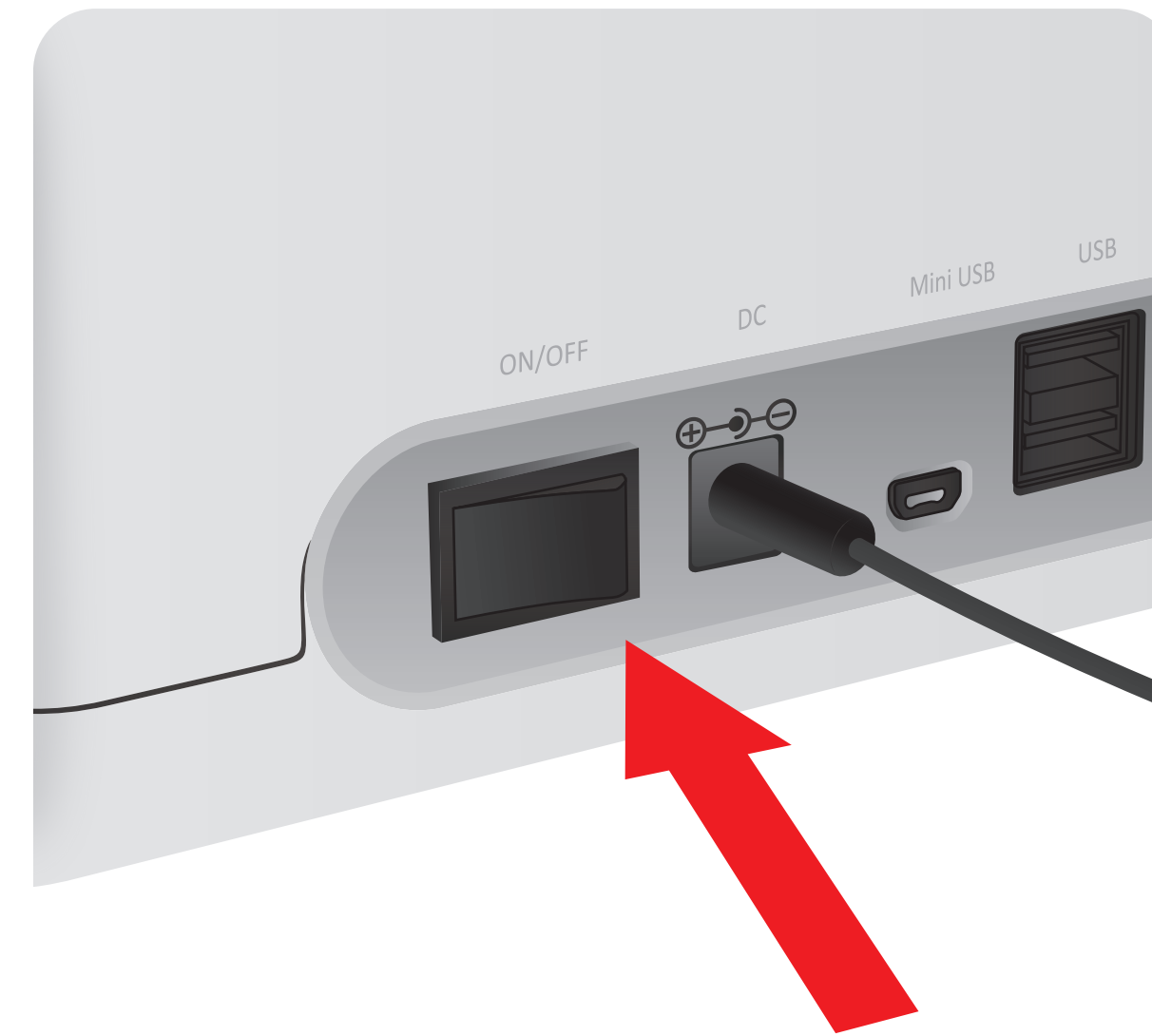


### Important

Allow 'Detection Buffer Tube' to attain room temperature at least for 30 minutes before performing the test

Make sure that lot number of the 'ID Chip' is exactly same as the lot number of 'Test Cartridge' and 'Detection Buffer Tube'

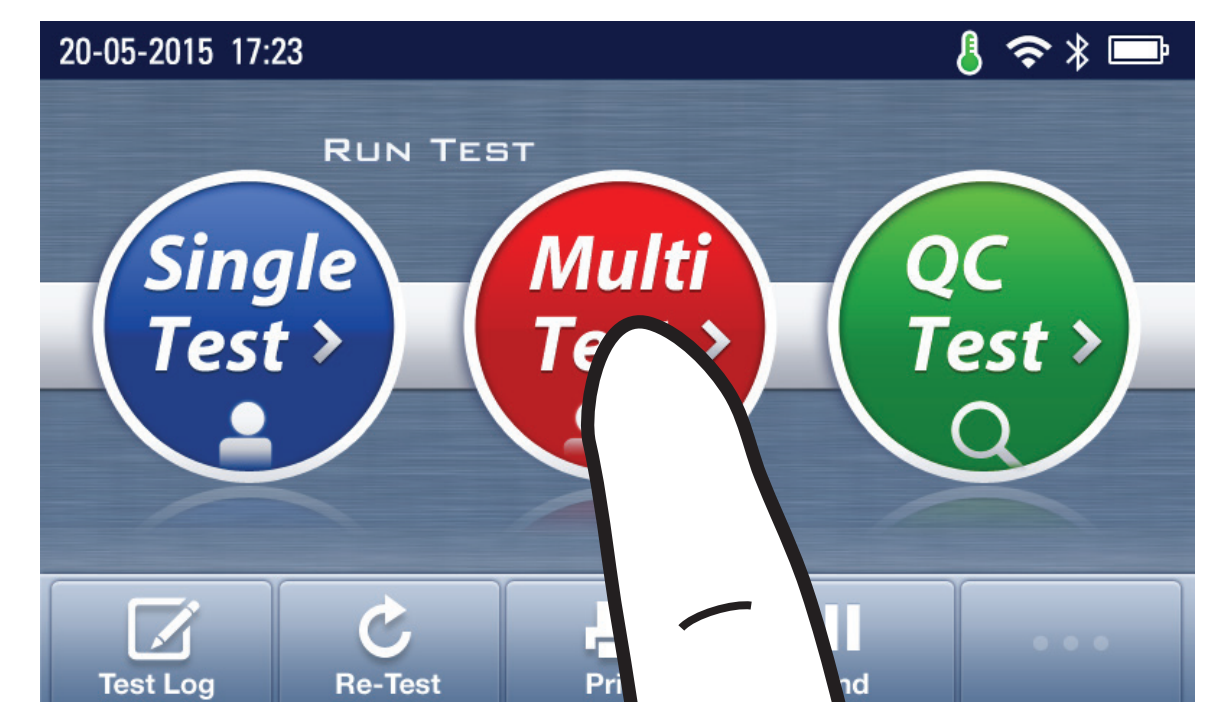
**1** Turn the power switch 'On'



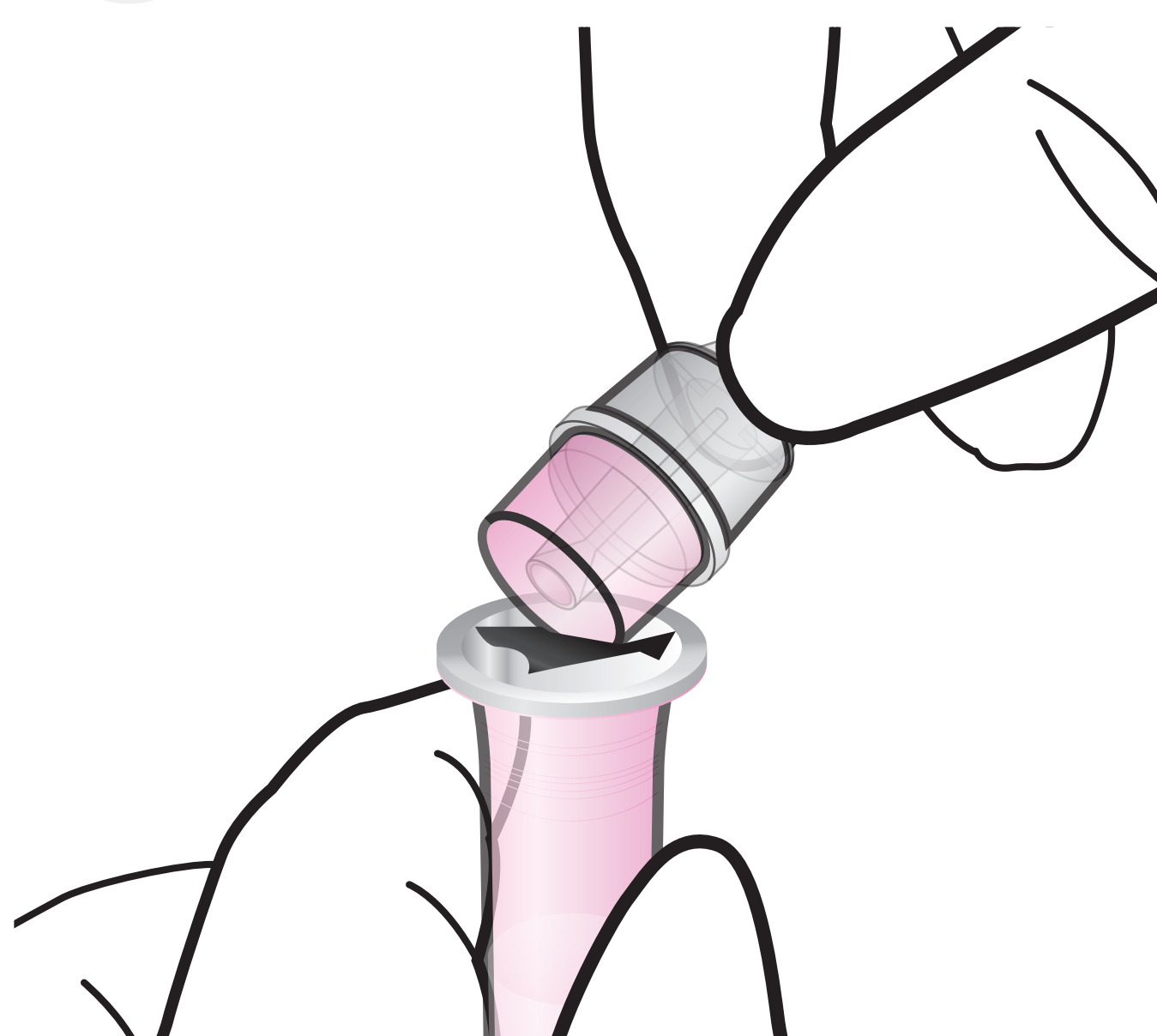
**2** Insert ID Chip



**3** Press 'Multi-test'



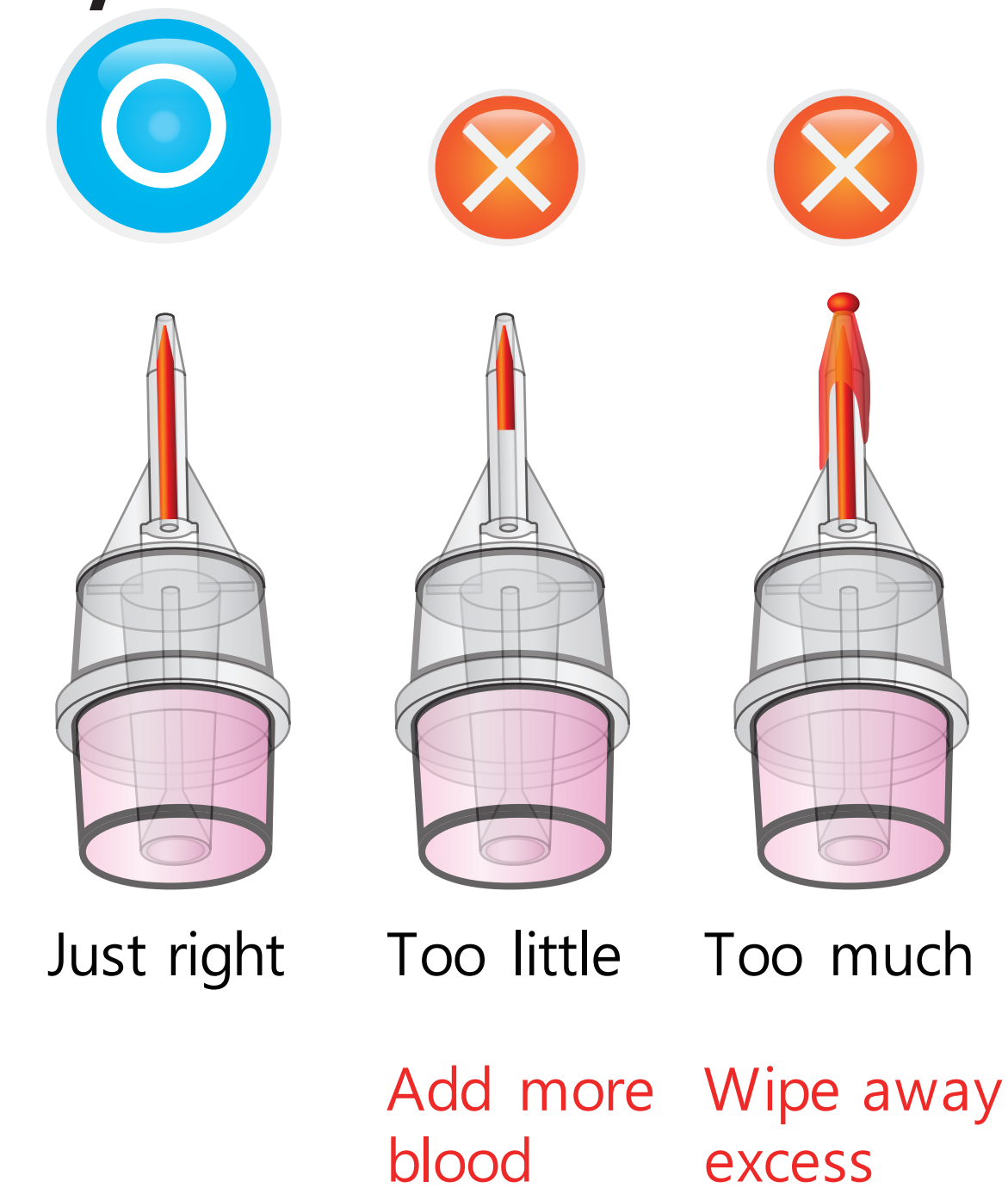
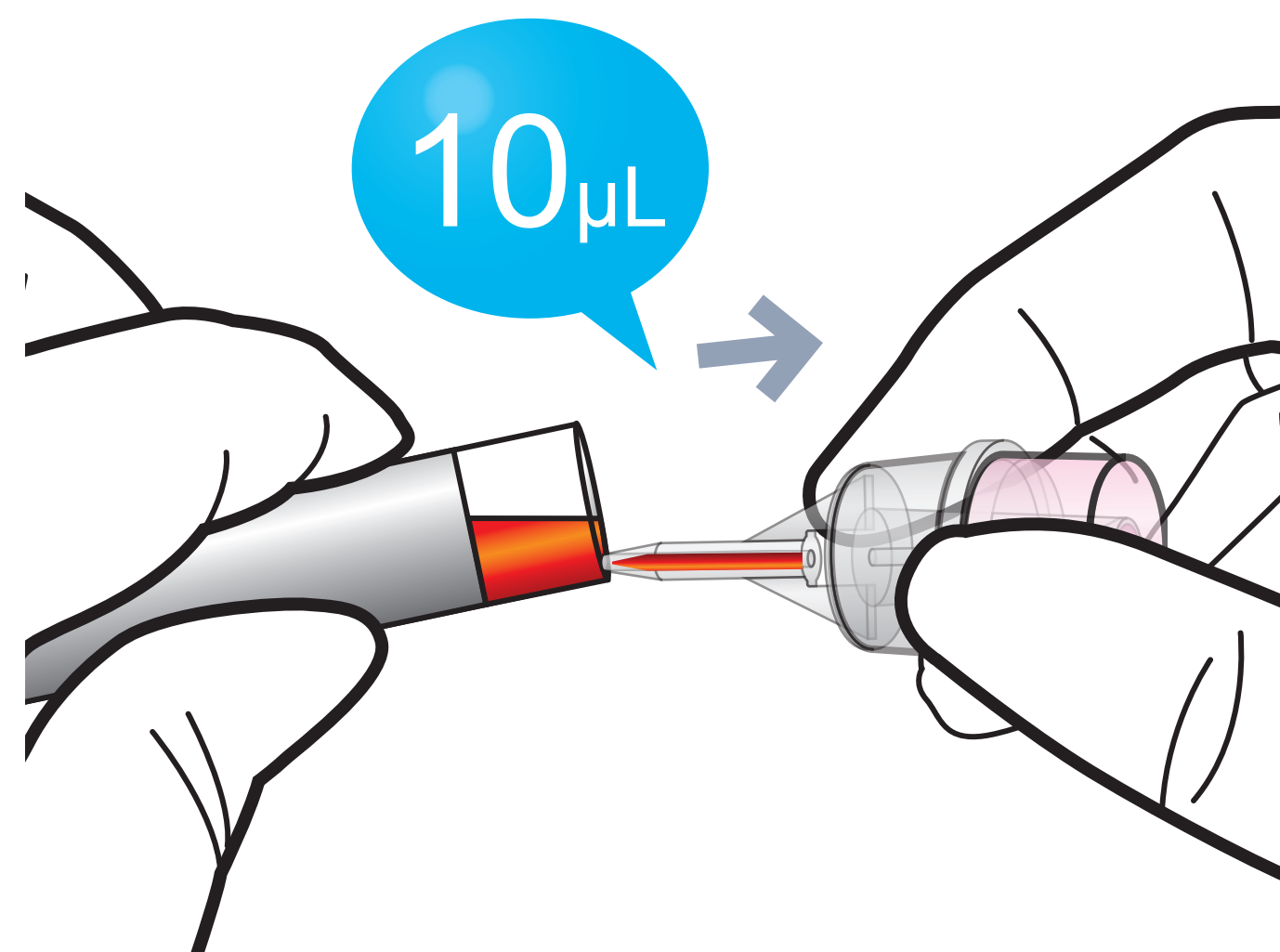
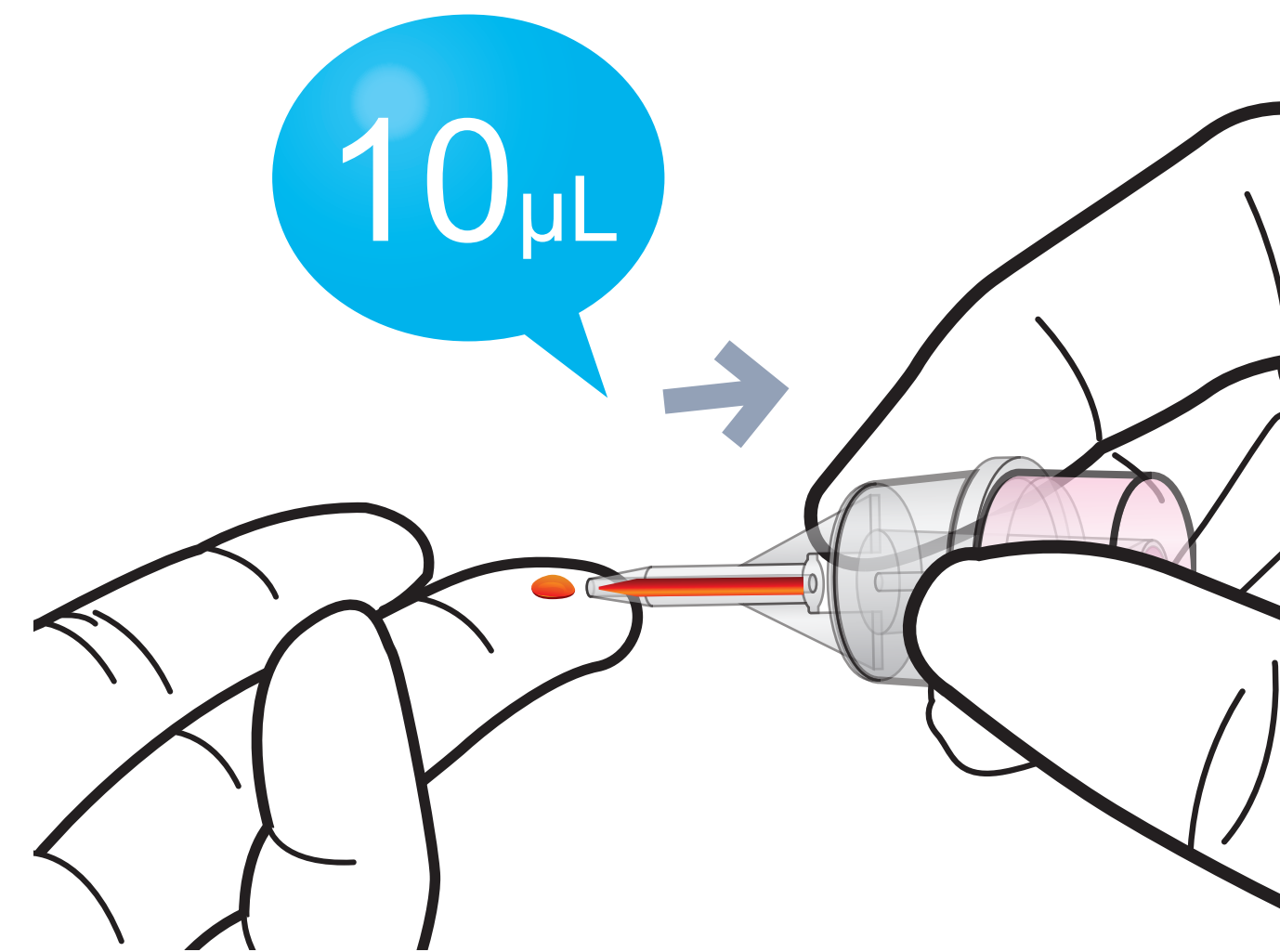
**4** Make a Puncture



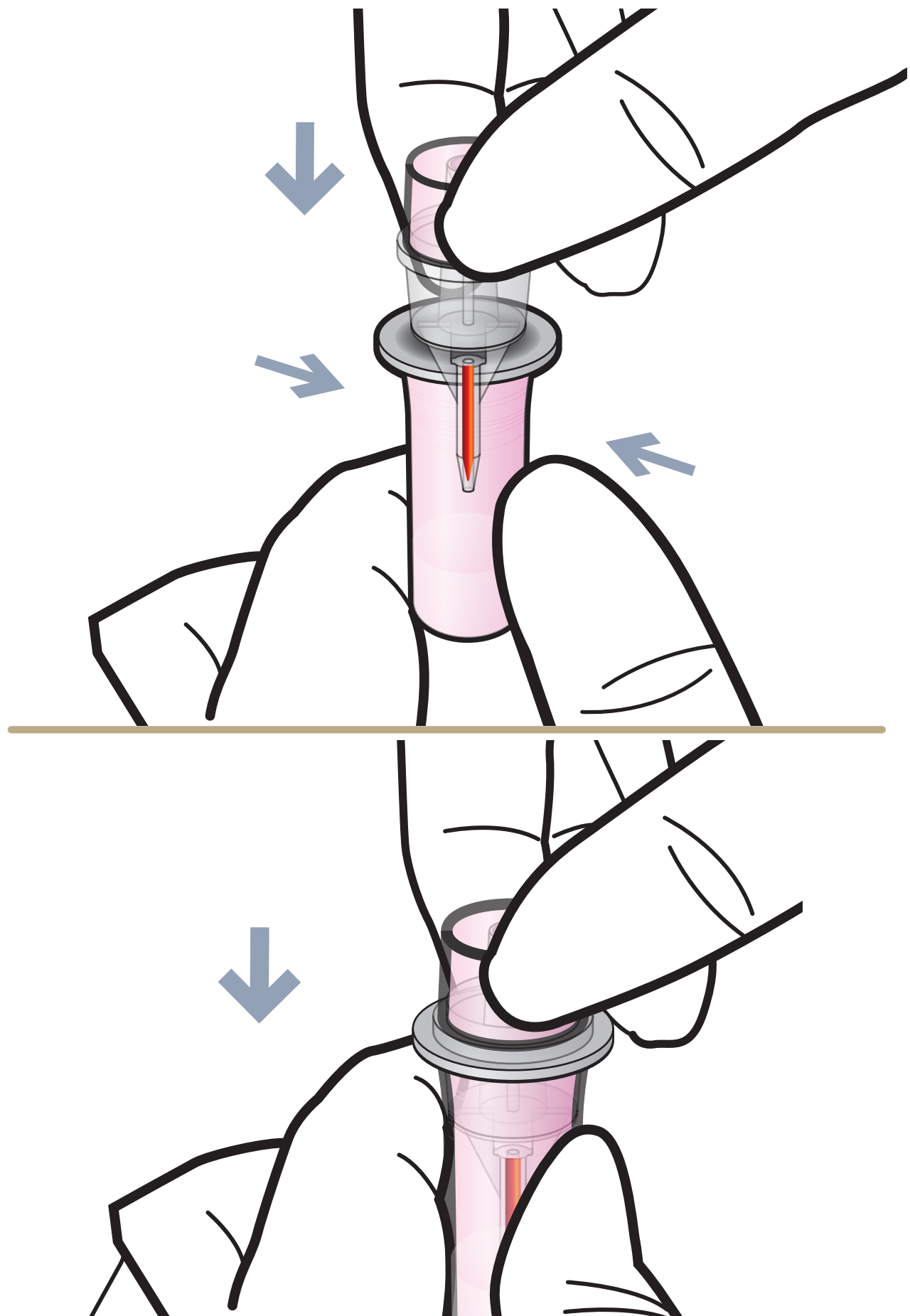
## Test Procedure

In case of Whole Blood

**1** Draw 10  $\mu$ L

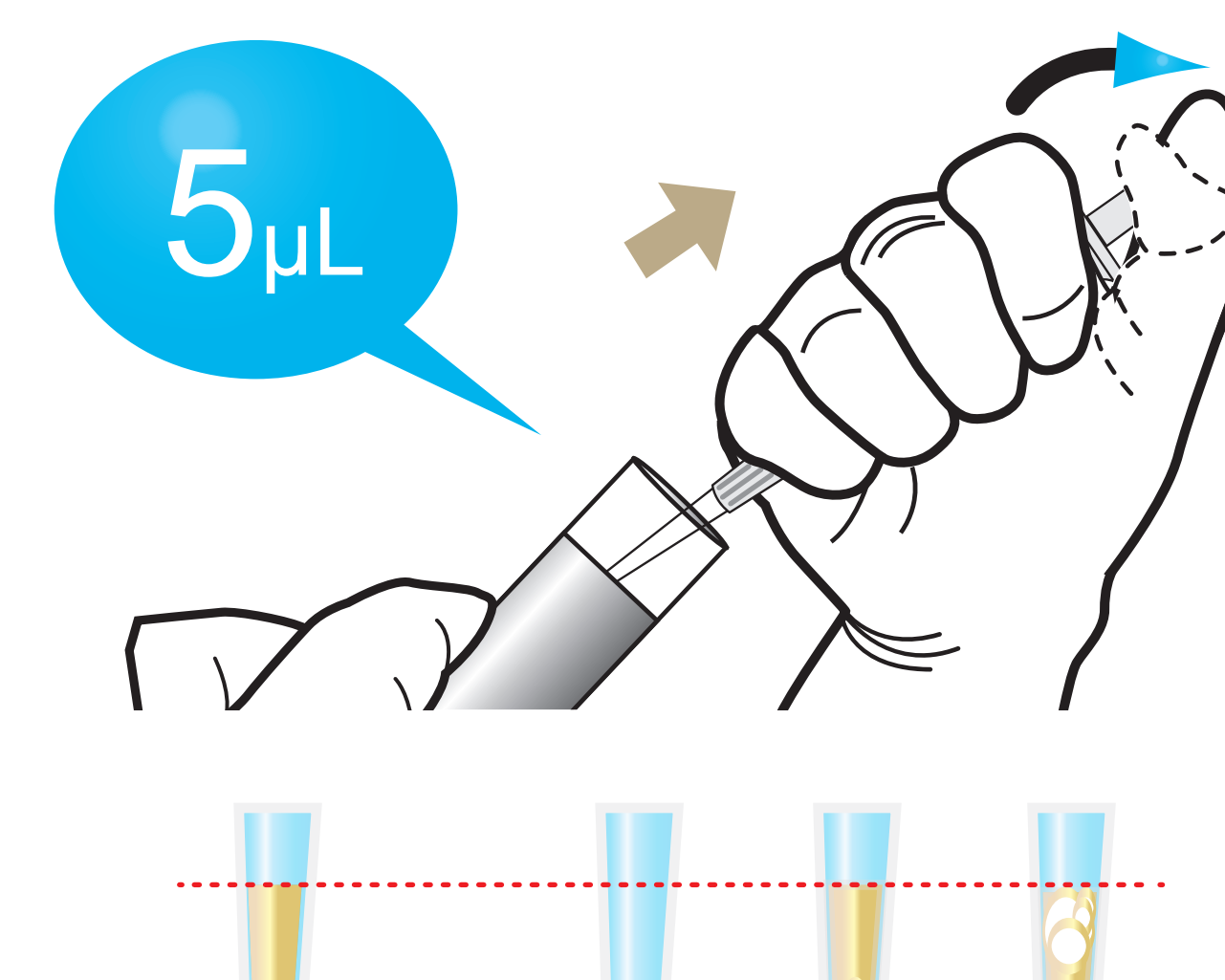


**2** Assemble the sample collector with detection buffer tube



In case of Serum, Plasma, Control

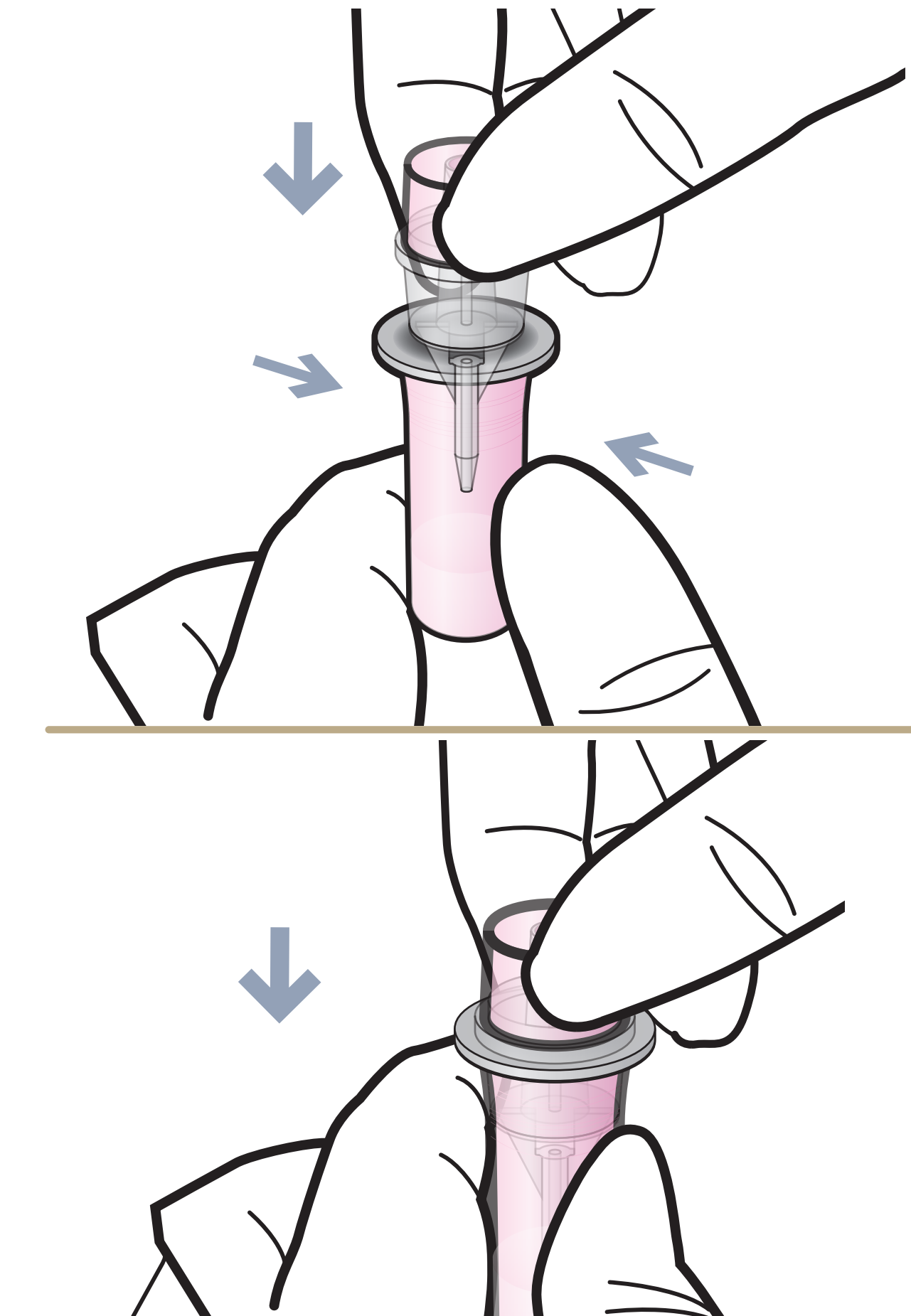
**1** Draw 5  $\mu$ L



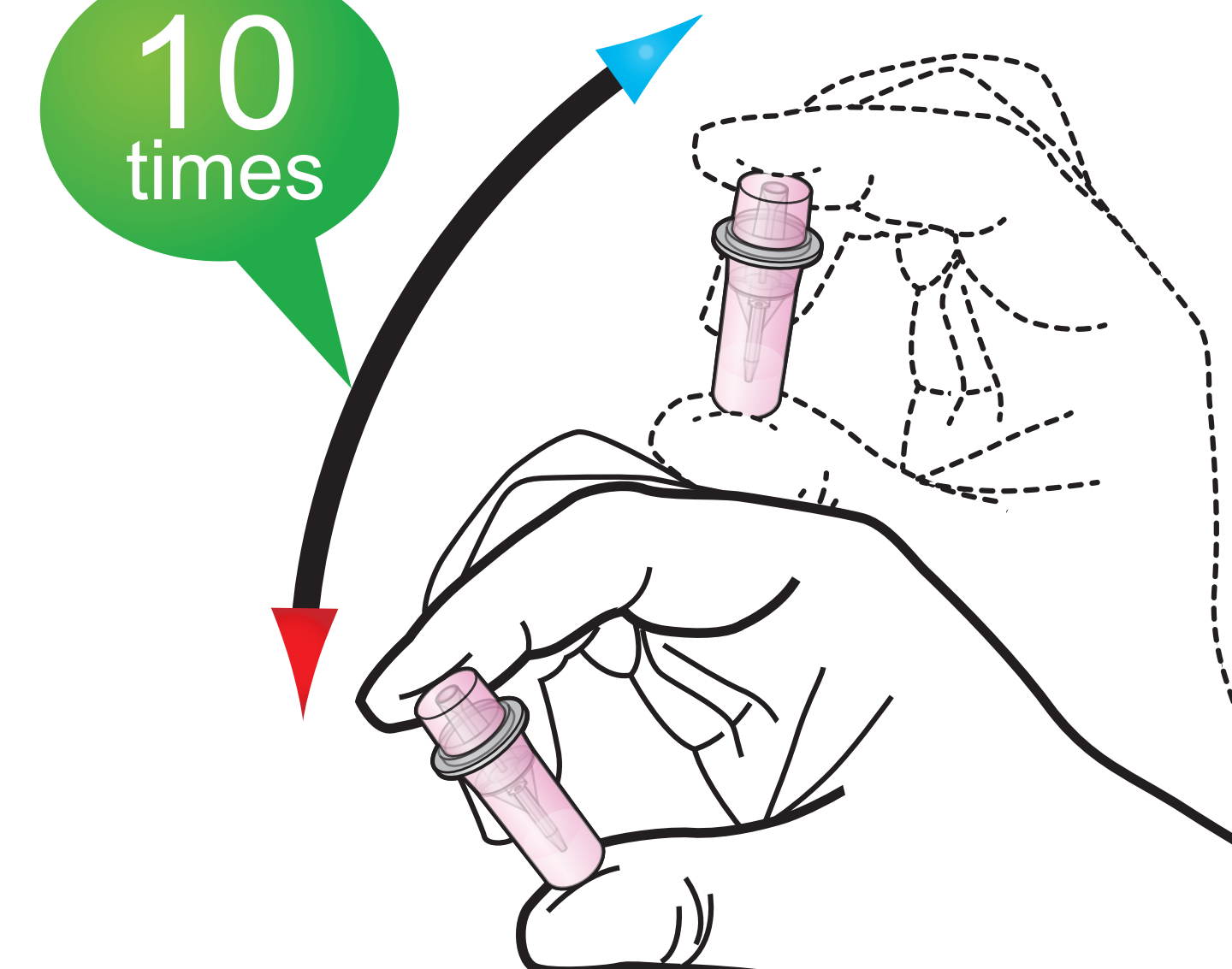
**2** Add it into detection buffer tube



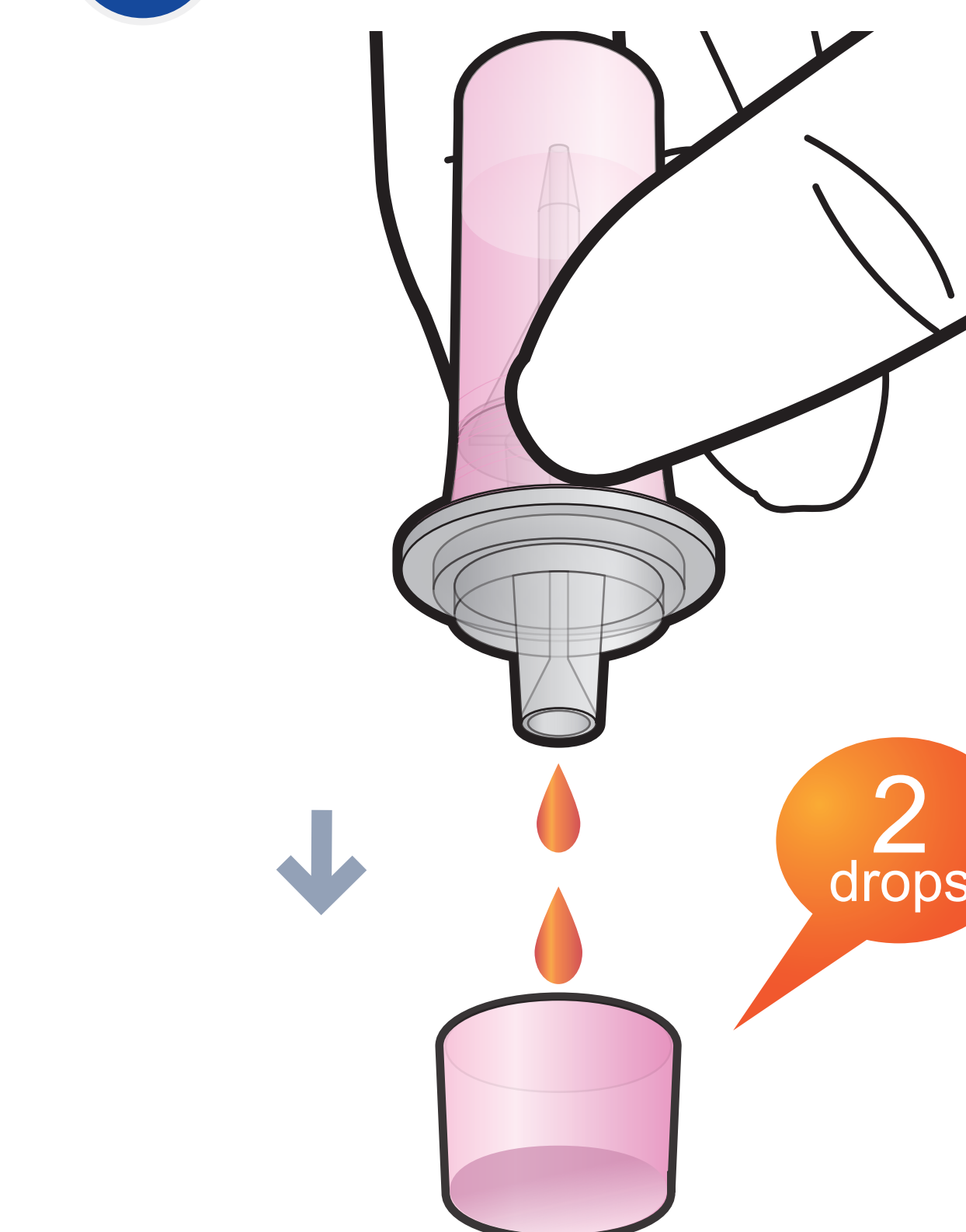
**3** Assemble the sample collector with detection buffer tube



**3** Shake the tube



**4** Discard two drops



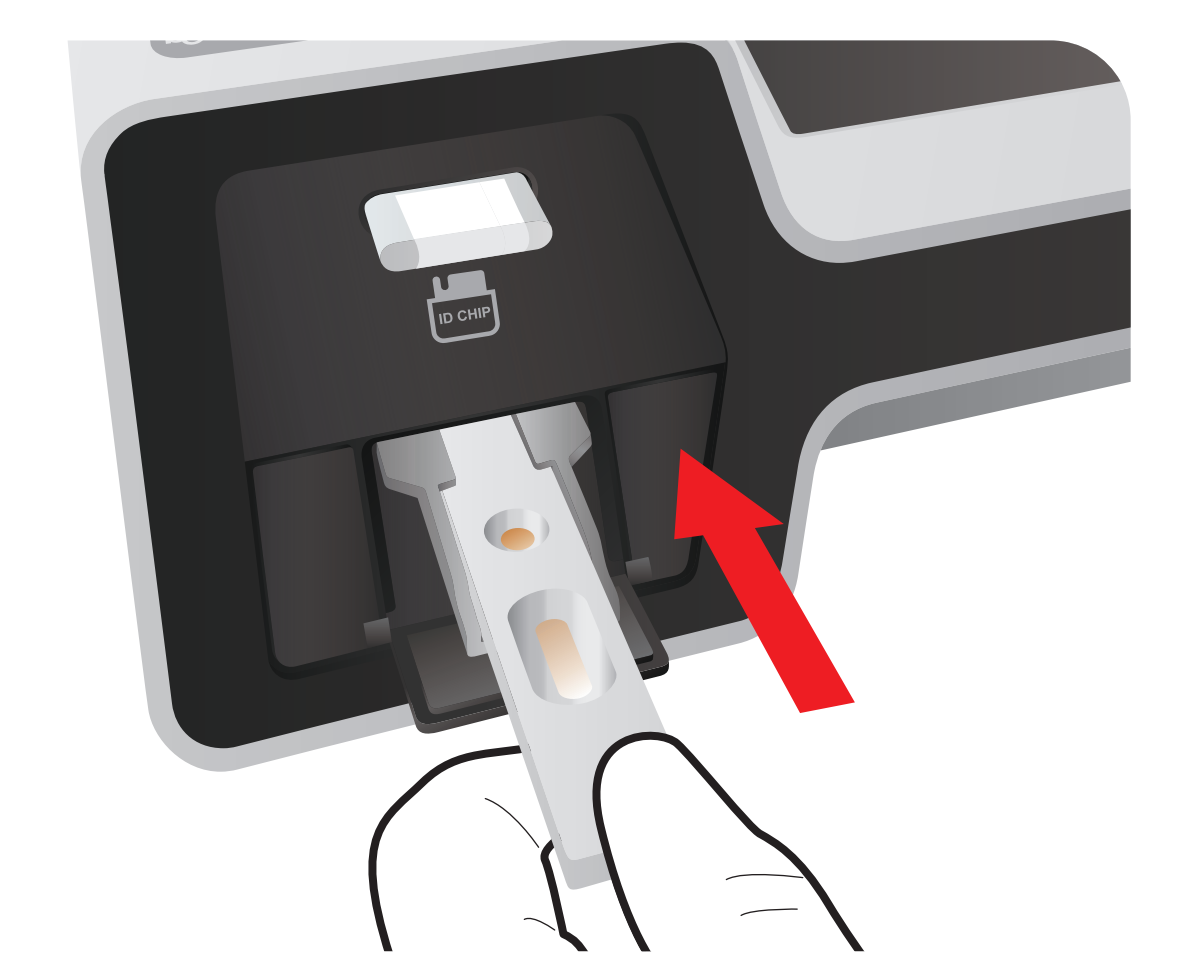
**5** Load the sample mixture



**6** Waiting 5 minutes



**7** Insert the cartridge into ichroma<sup>TM</sup> II Reader



**8** Press 'Select'



**9** Read the test result

