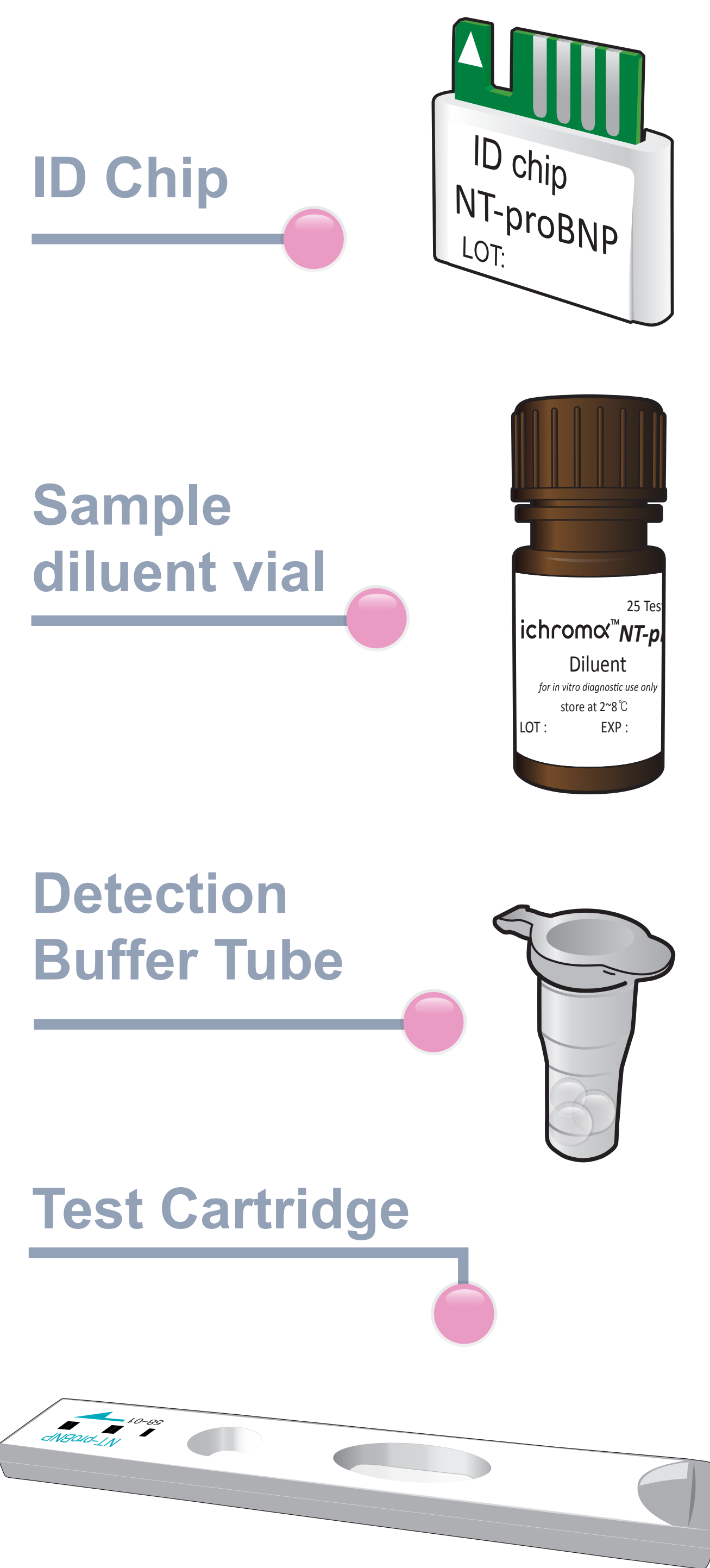


ichromaTM NT-proBNP

Test Setup

Test Components



iCHROMA II Reader

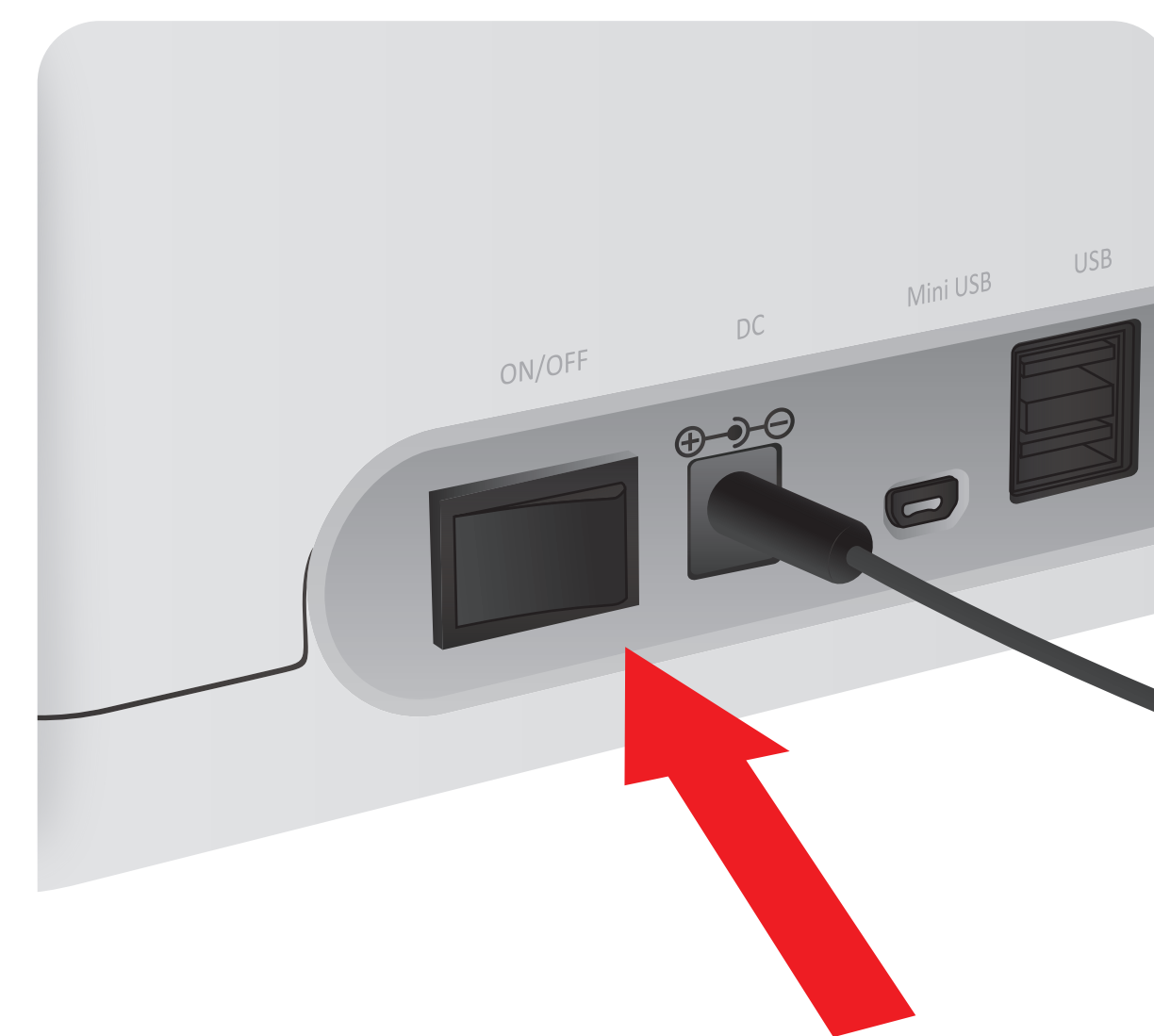


Important

Allow 'Detection Buffer Tube' to attain room temperature at least for 30 minutes before performing the test

Make sure that lot number of the 'ID Chip' is exactly same as the lot number of 'Test Cartridge' and Detection Buffer Tube'

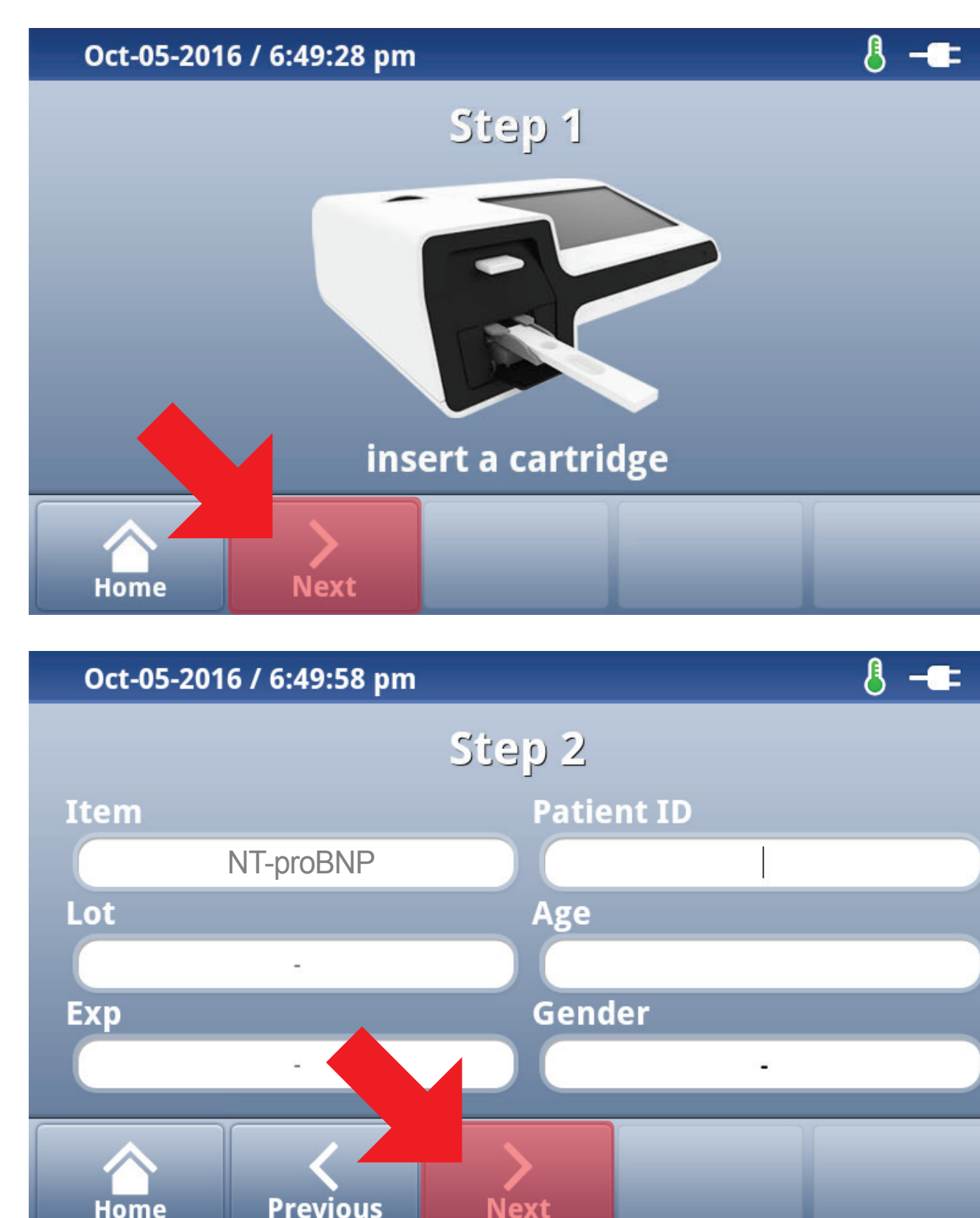
1 Turn the power switch 'On'



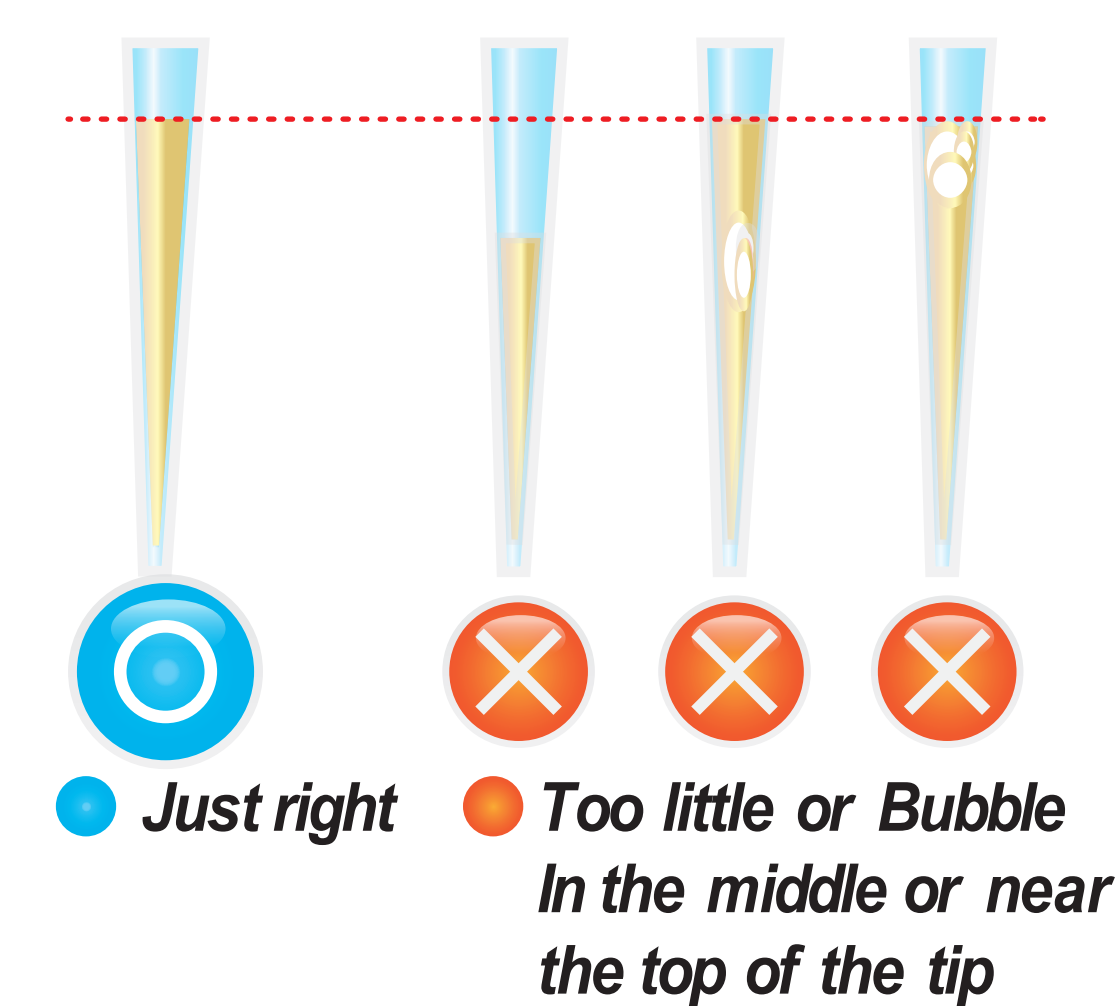
2 Insert ID Chip



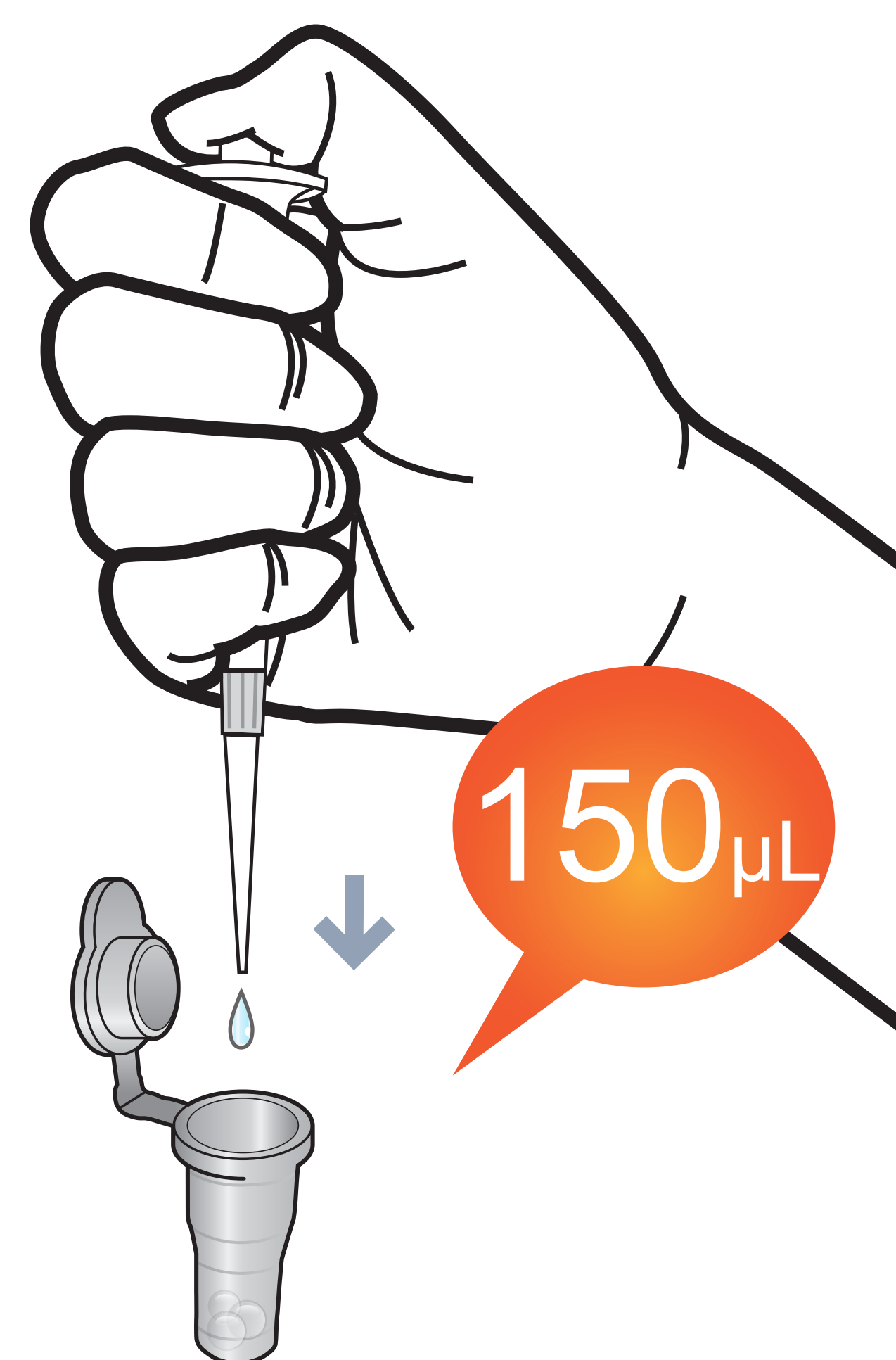
3 Press 'Select'



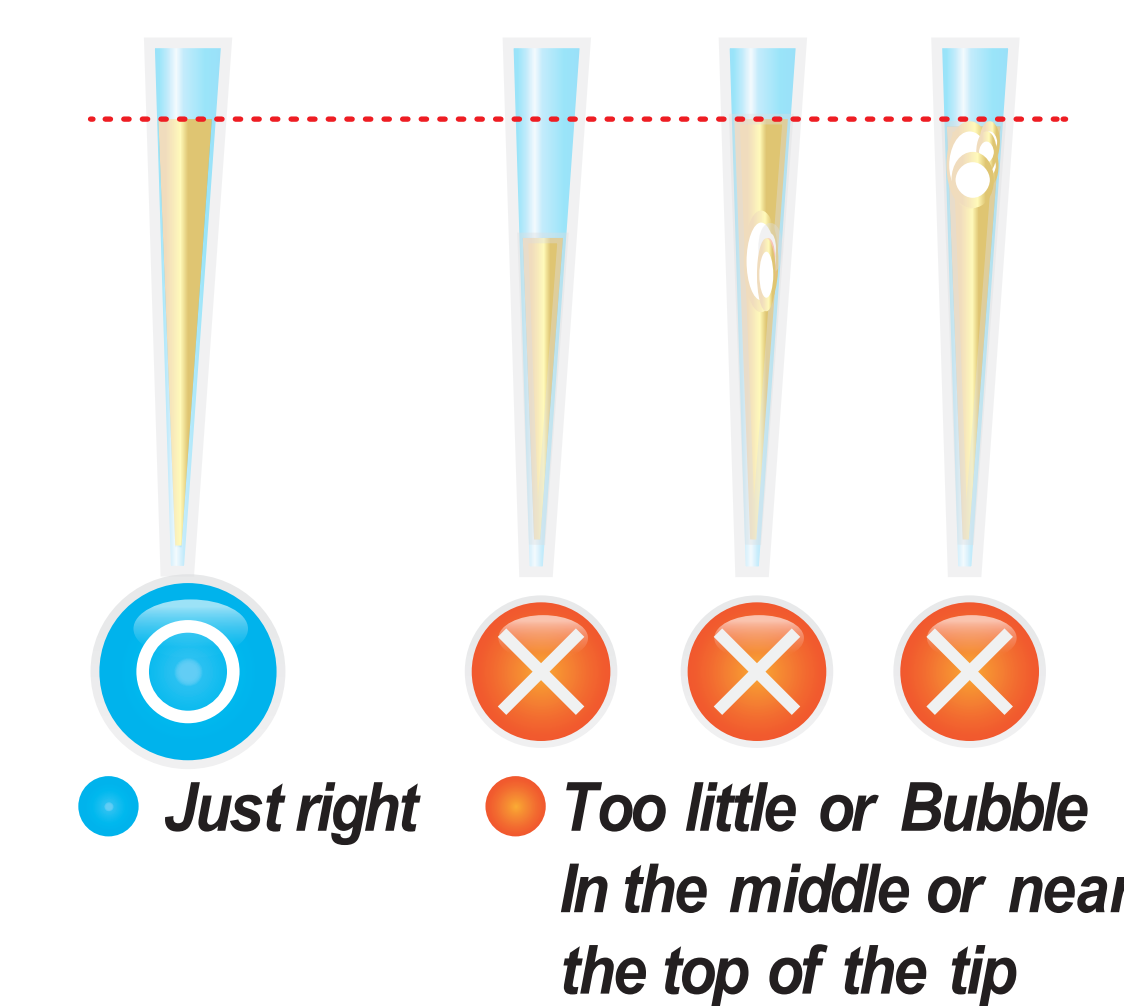
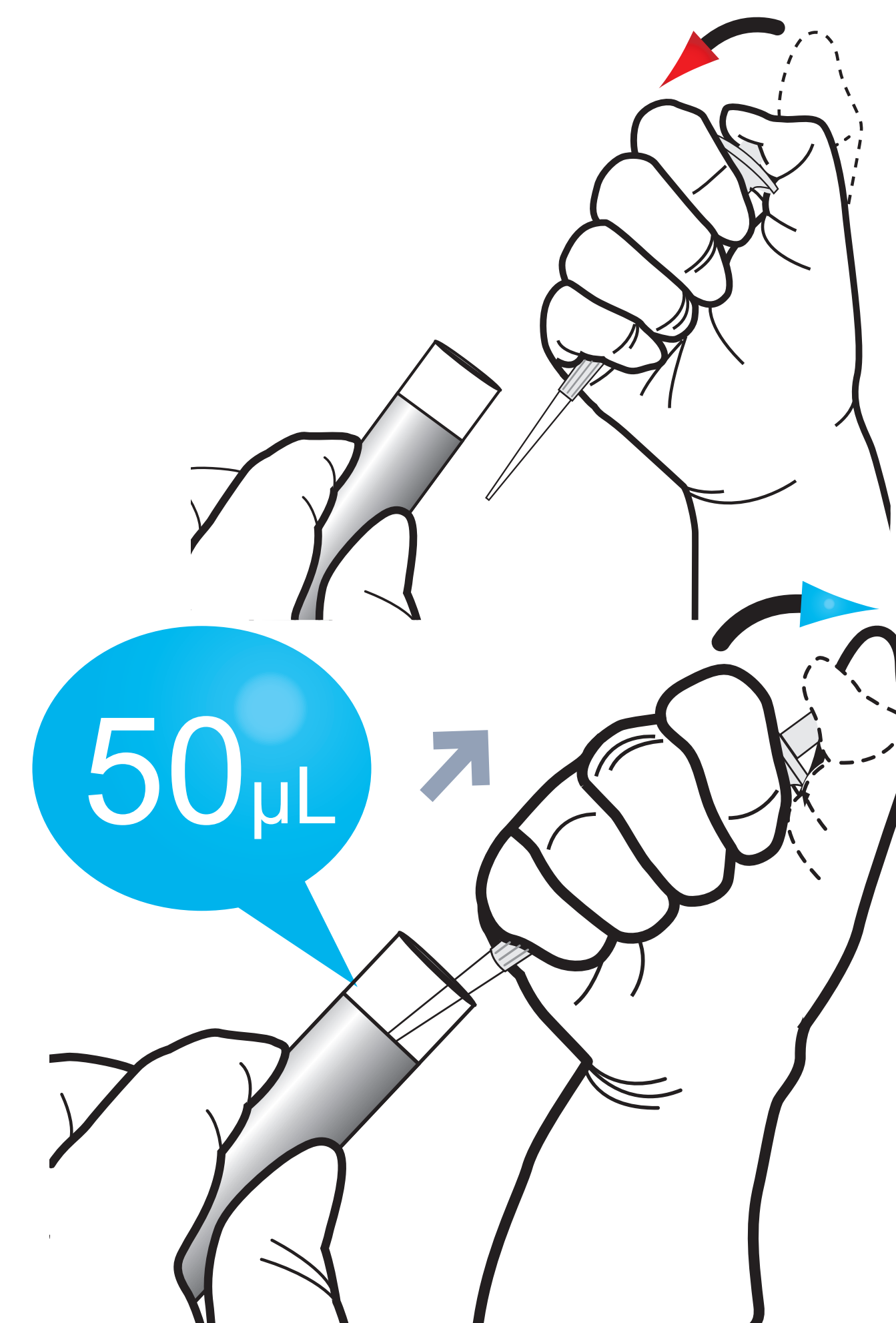
1 Draw the diluent from diluent vial 150 μ L



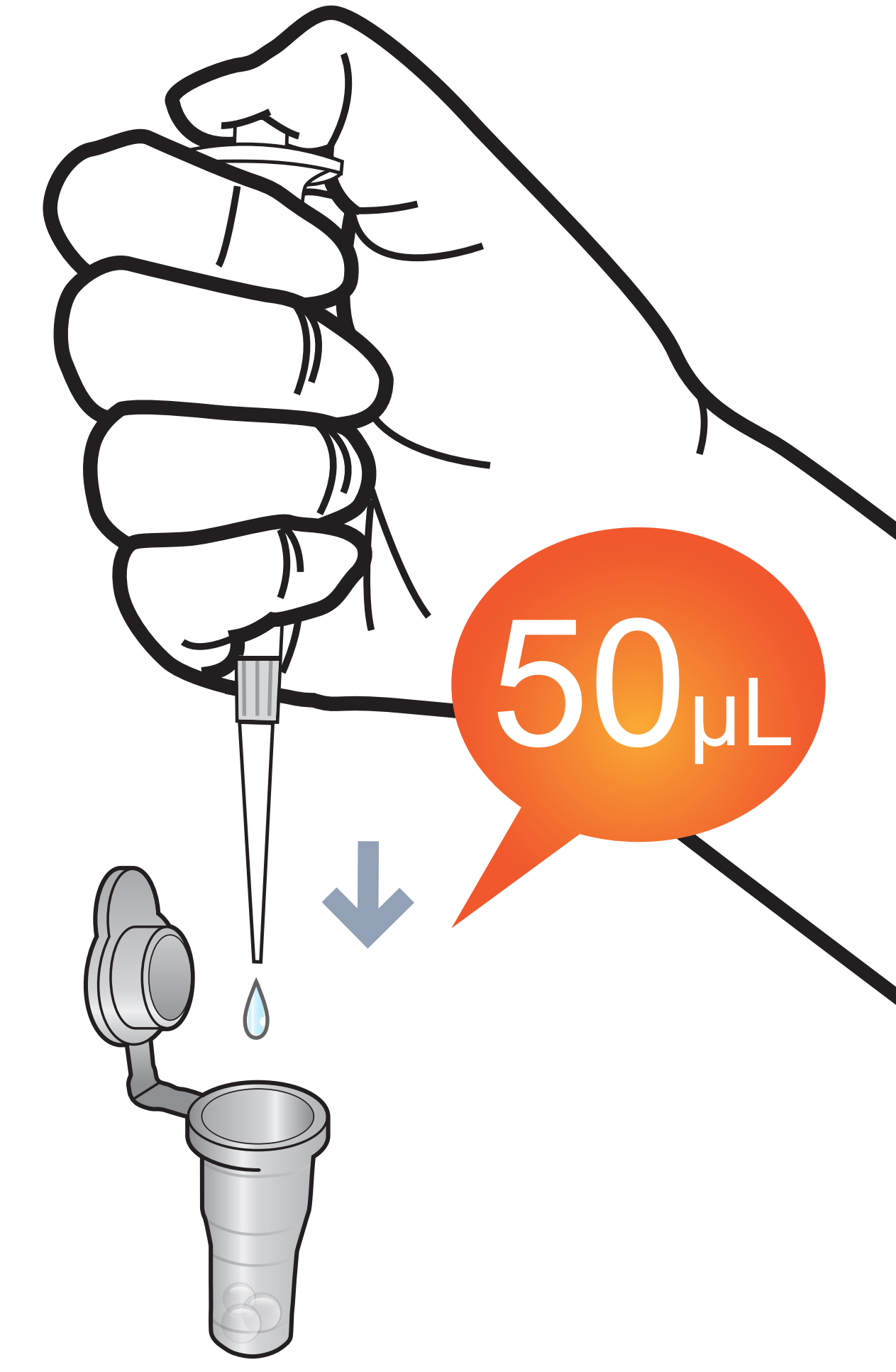
2 Add it into detection buffer tube



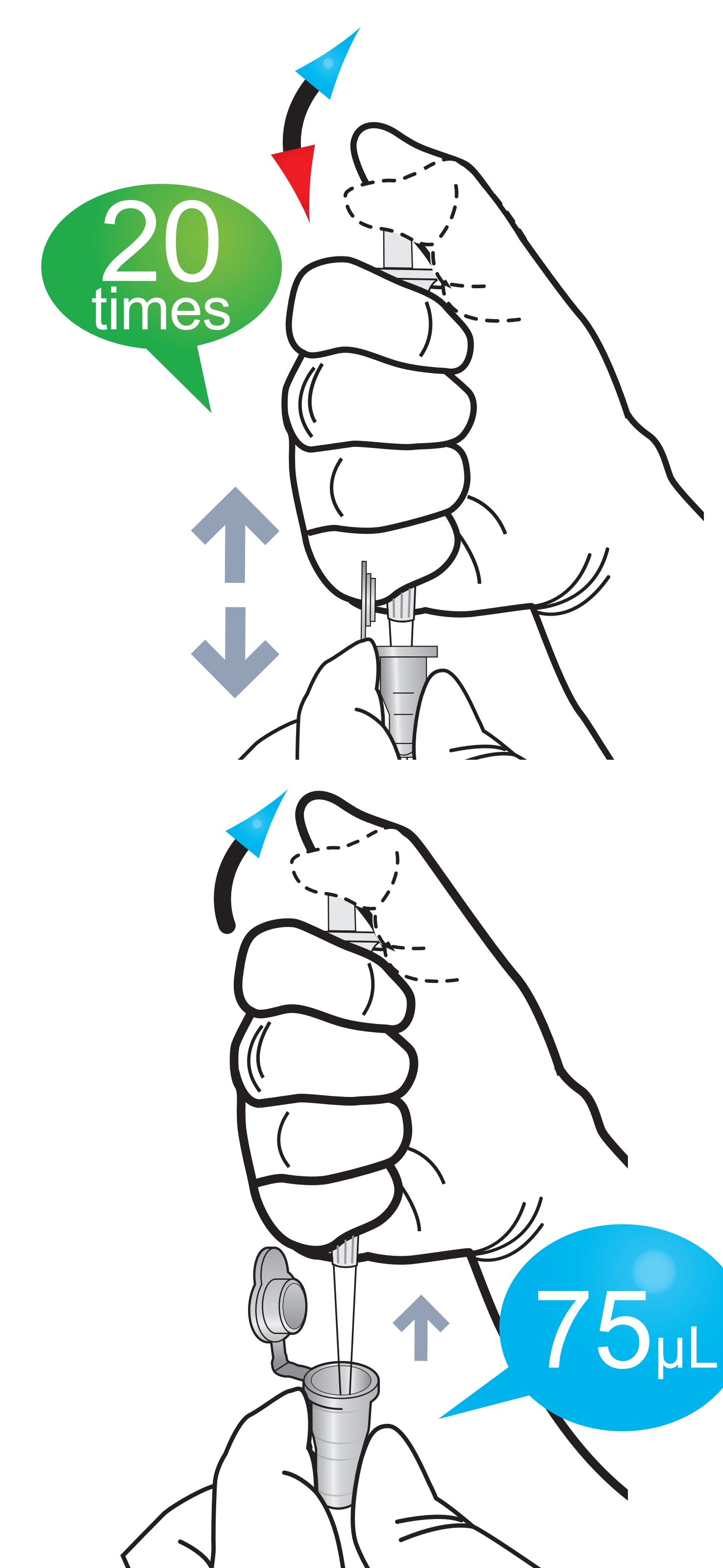
3 Draw 50 μ L (Human whole blood / Serum / Plasma / Control)



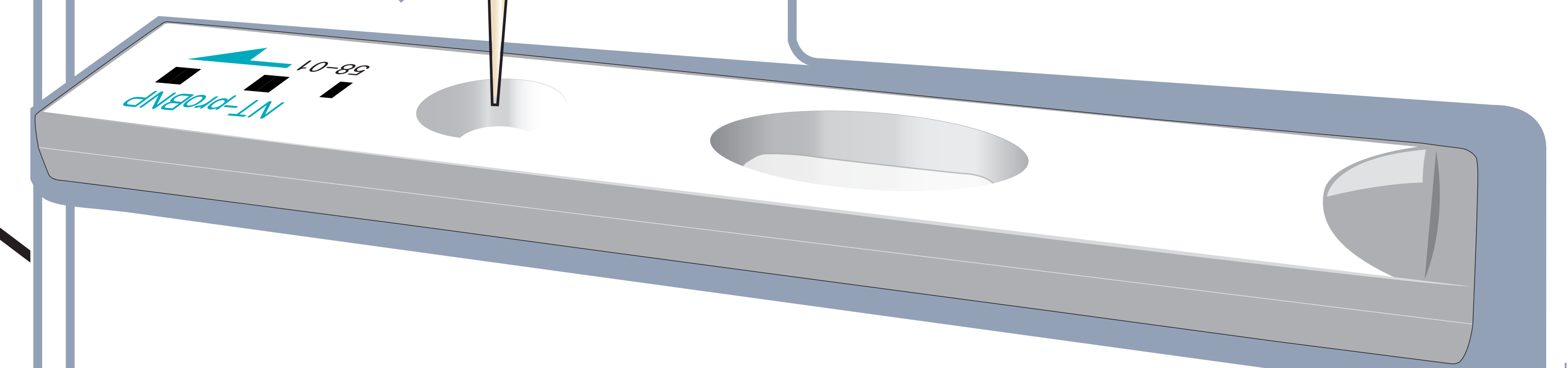
4 Add it into detection buffer tube



5 Mix well by pipetting 20 times.



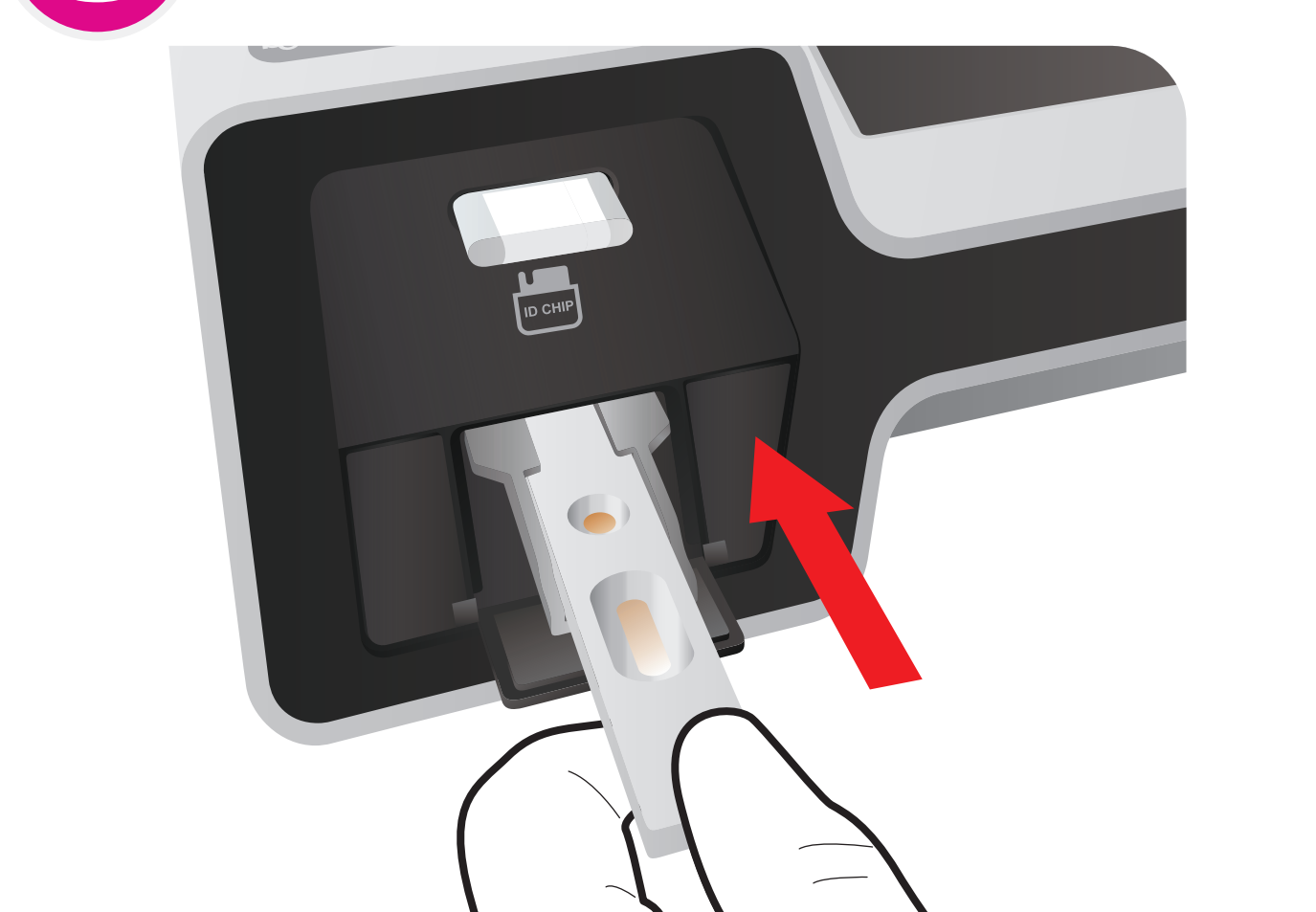
6 Load the sample Mixture



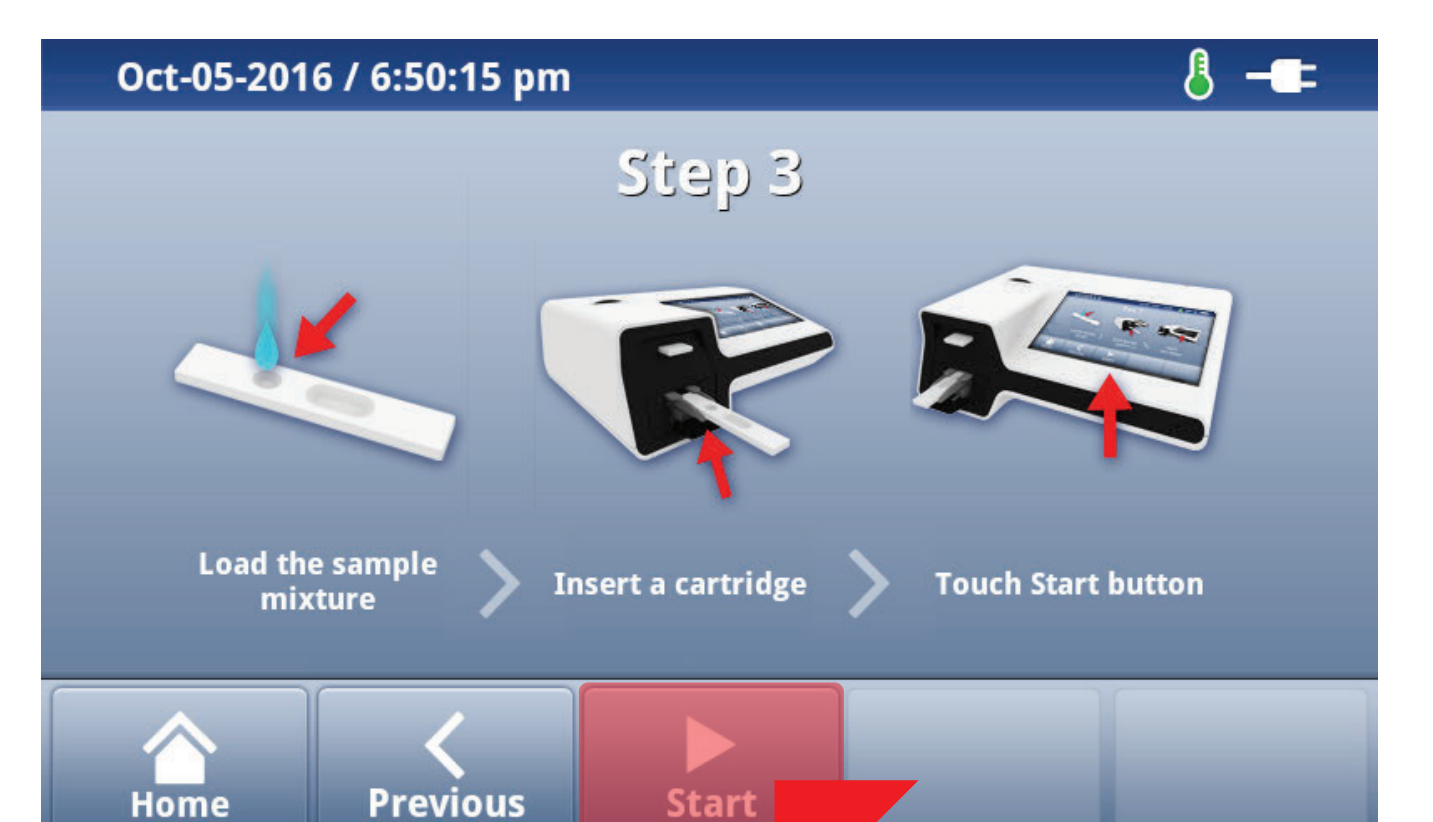
7 Insert the cartridge into i-chamber at 25°C



8 Insert the test cartridge



9 Press 'Select'



10 Read the test result

