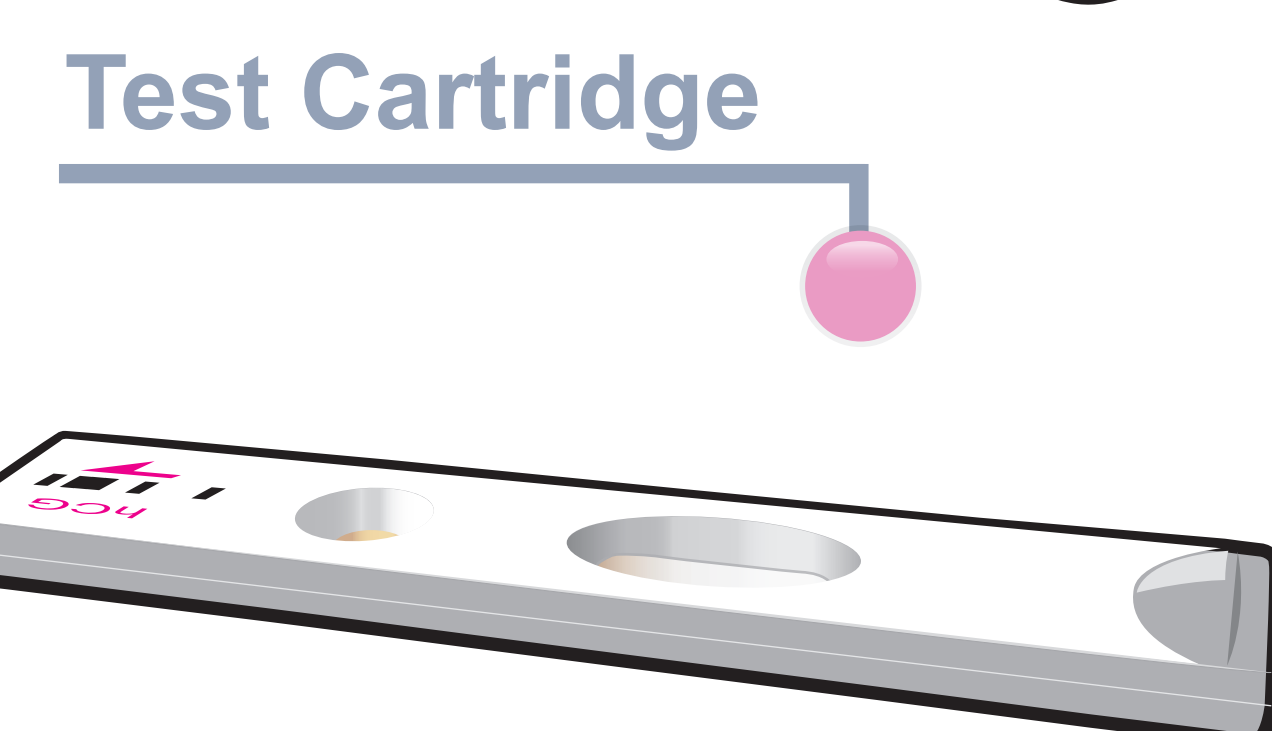
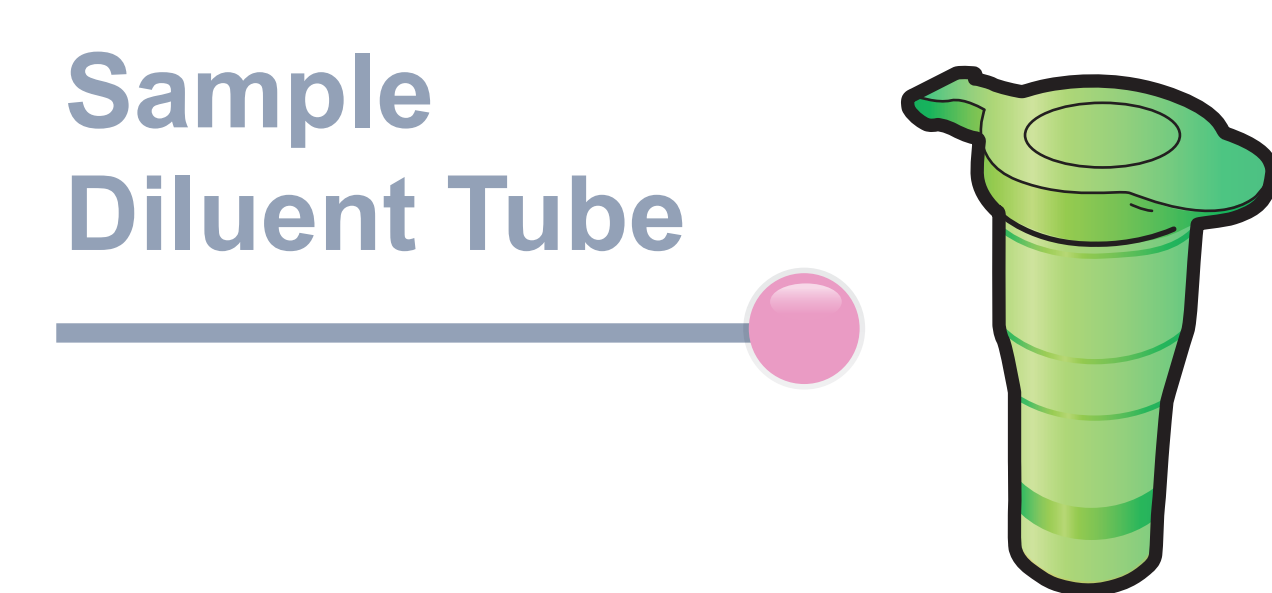
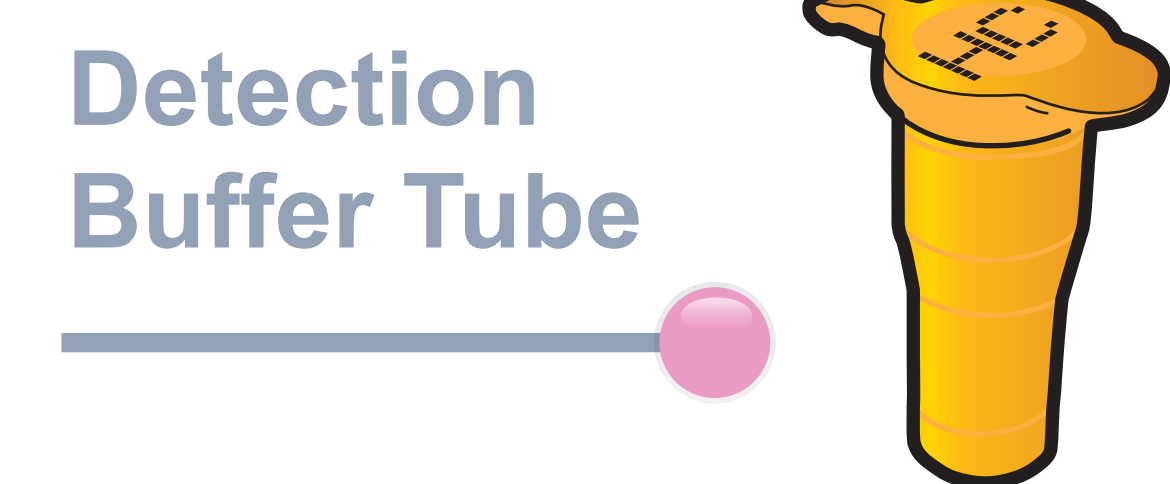
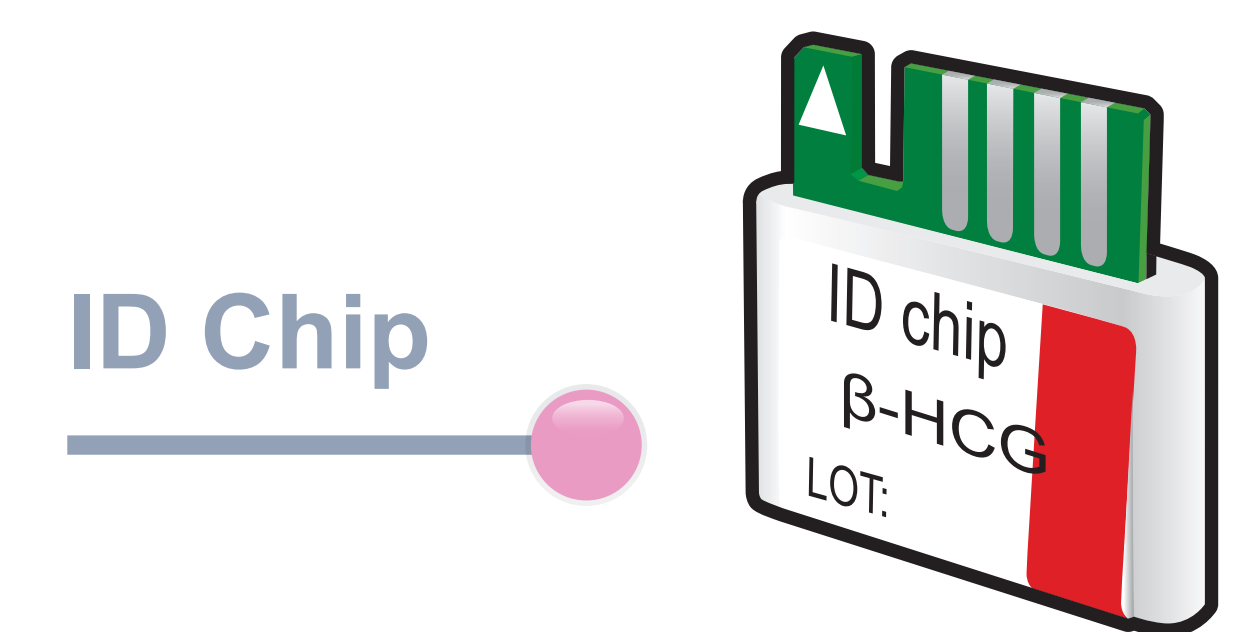


ichromα™ β-HCG

Test Setup

Test Components

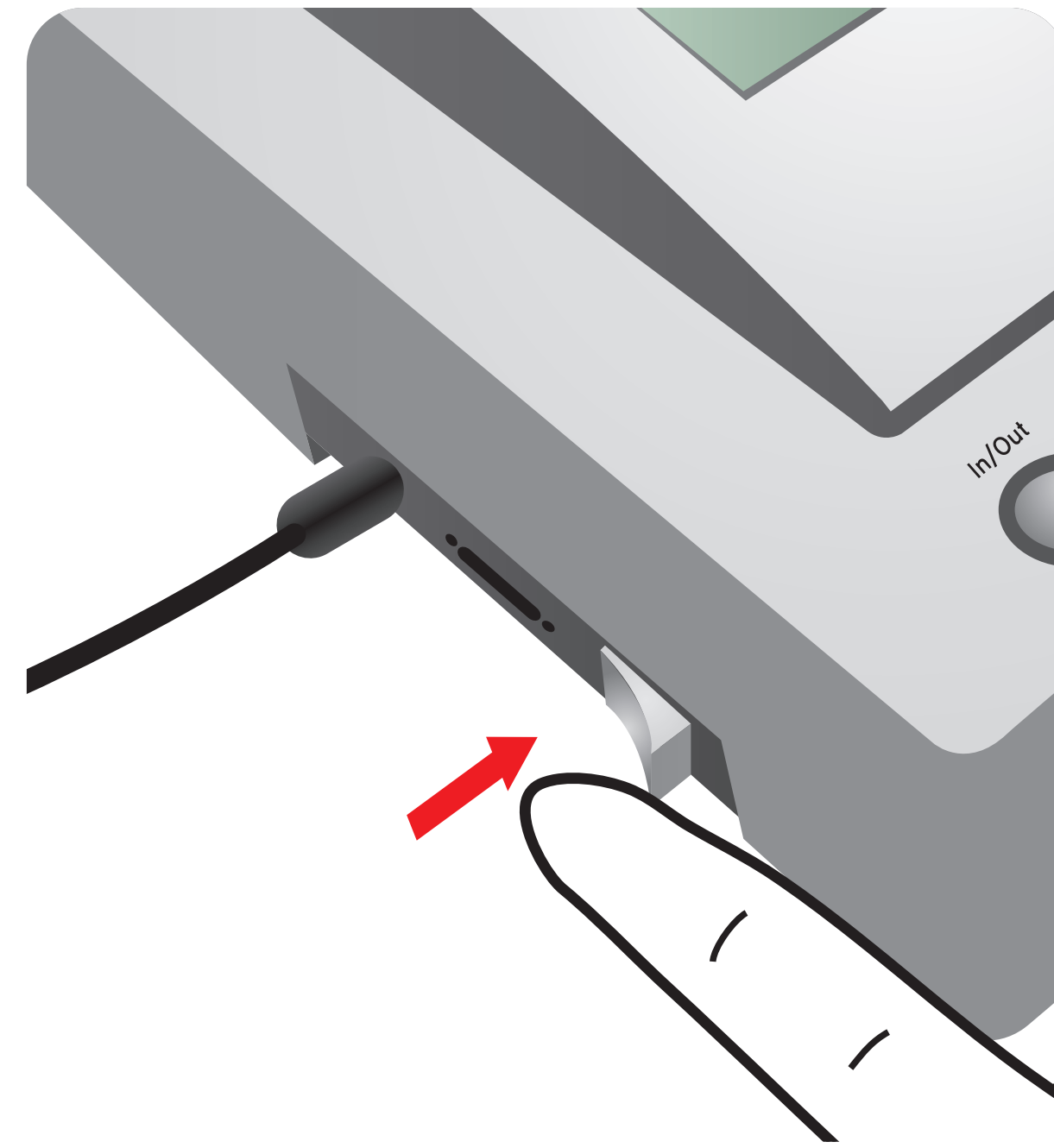


Important

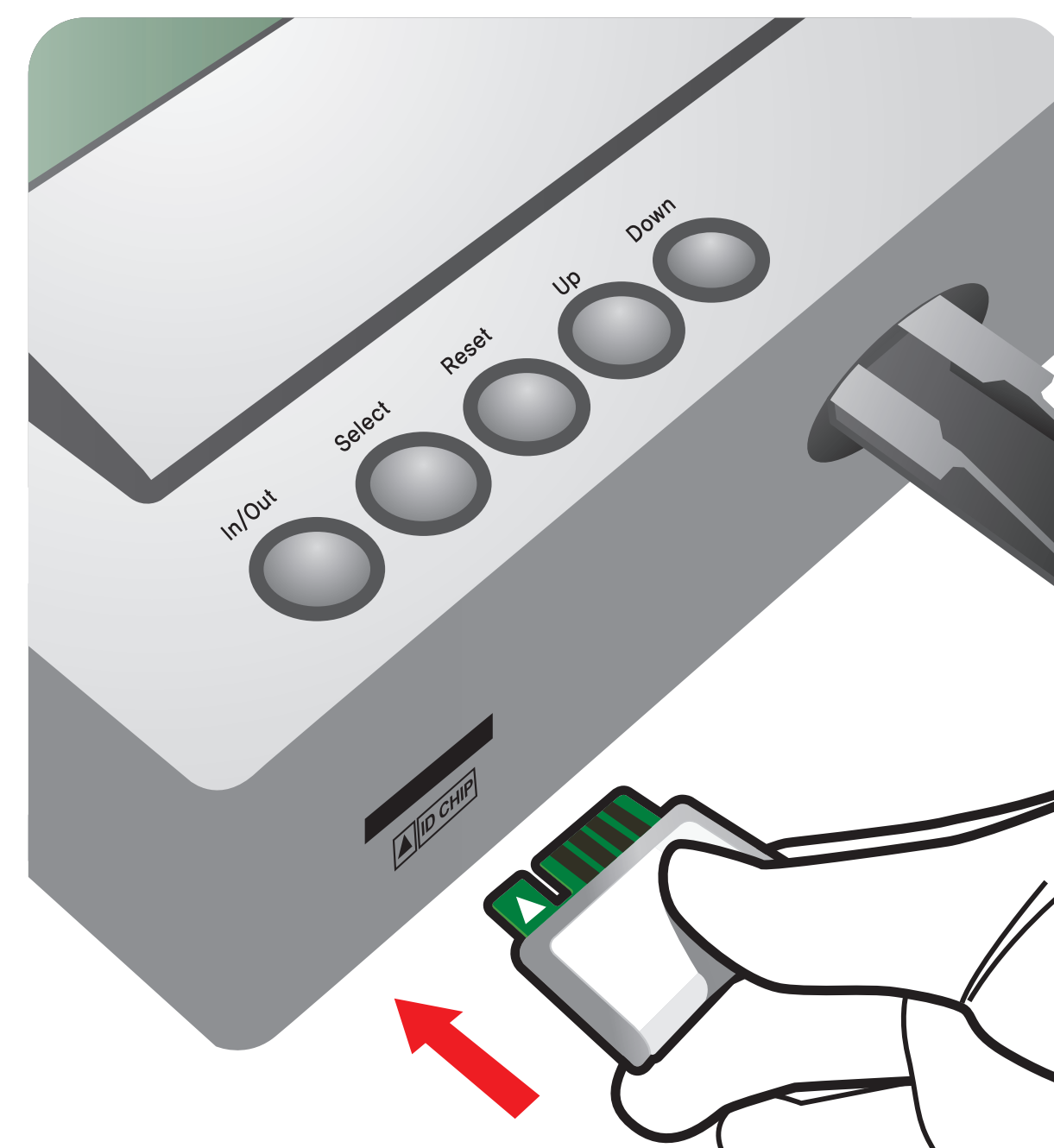
Allow 'Detection Buffer Tube' to attain room temperature at least for 30 minutes before performing the test

Make sure that lot number of the 'ID Chip' is exactly same as the lot number of 'Test Cartridge' and 'Detection Buffer Tube'

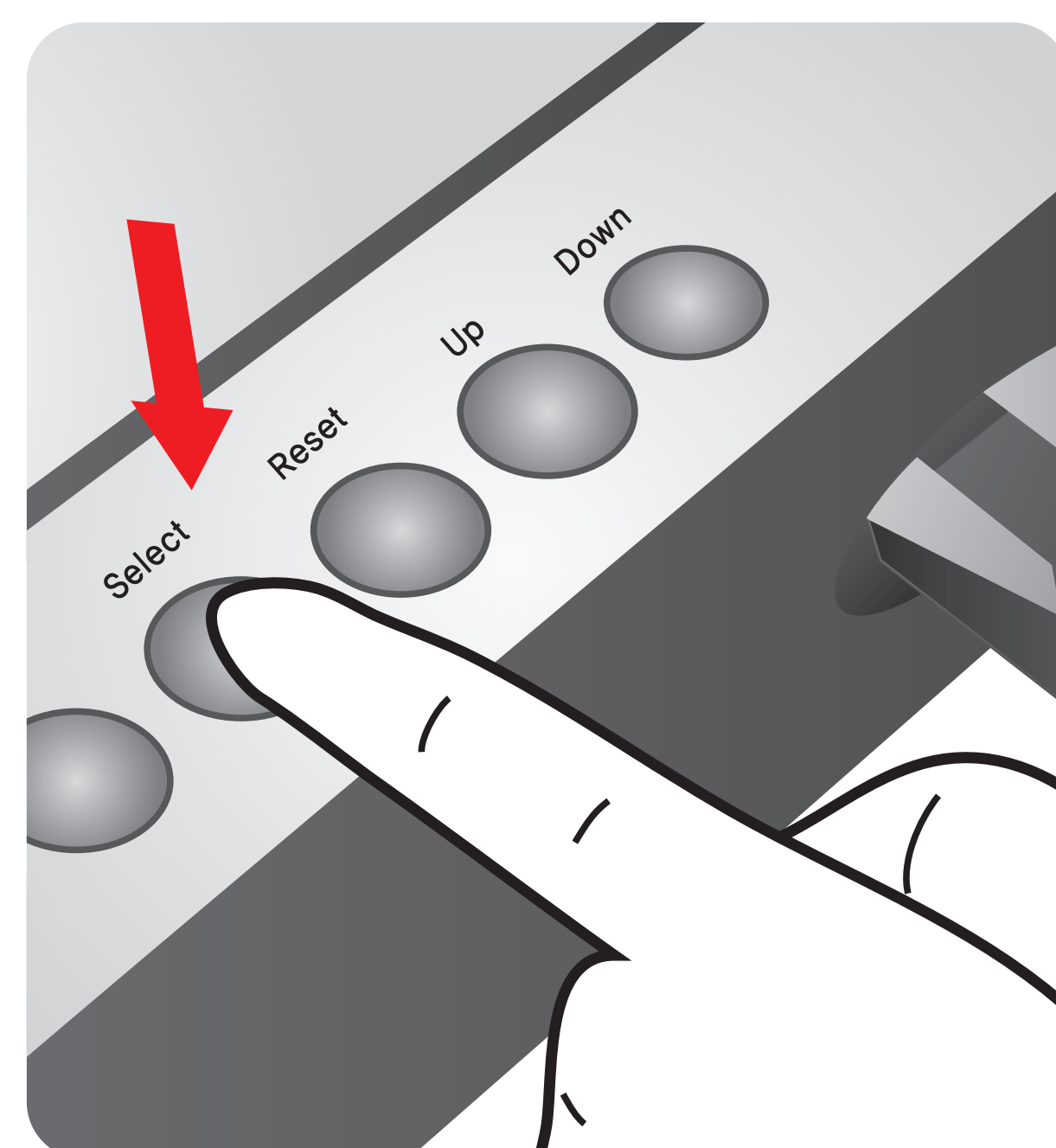
1 Turn the power switch 'On'



2 Insert ID Chip



3 Press 'Select'



Test Procedure

In case of Serum, Plasma, Control

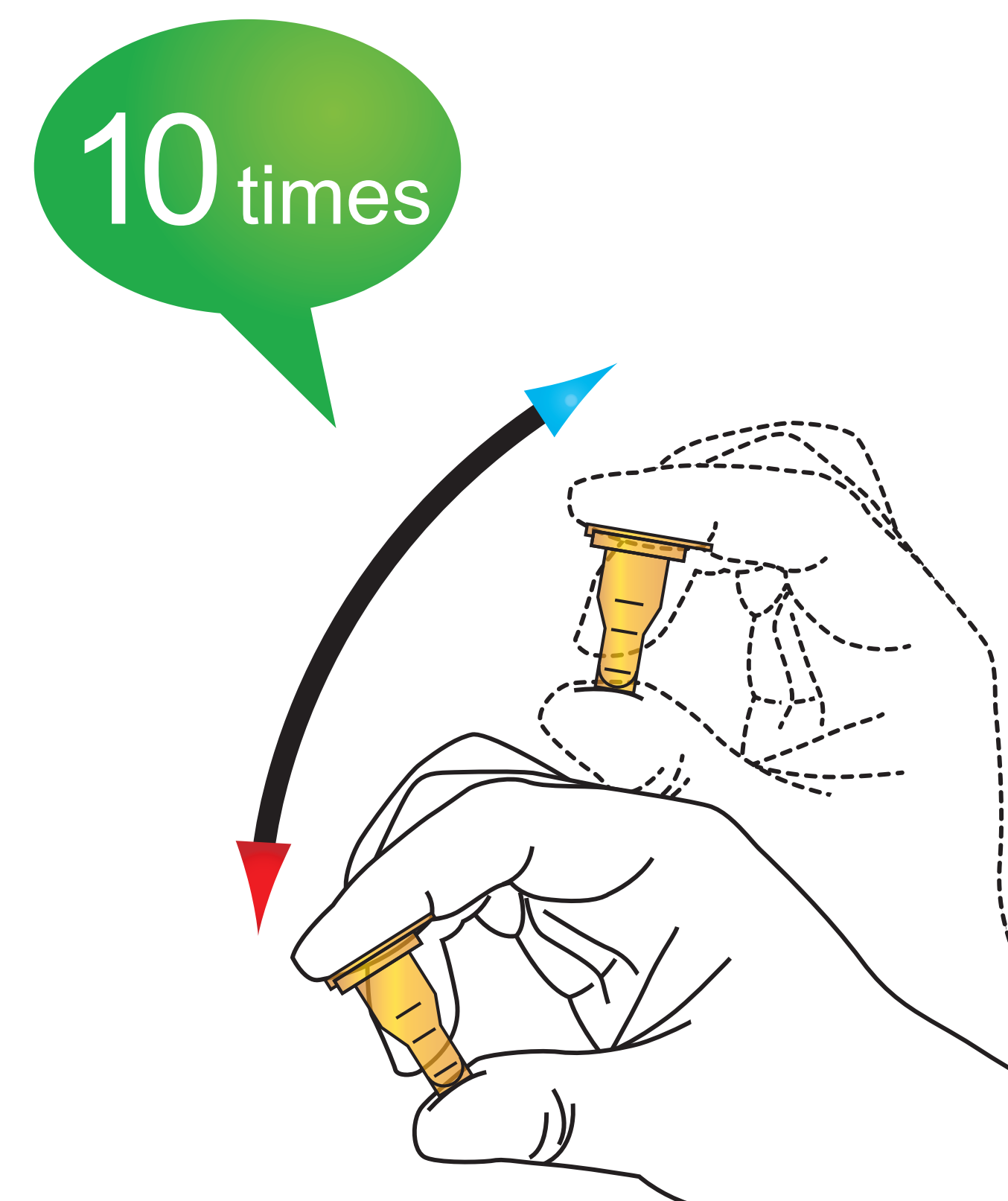
1 Draw Serum, Plasma, Control



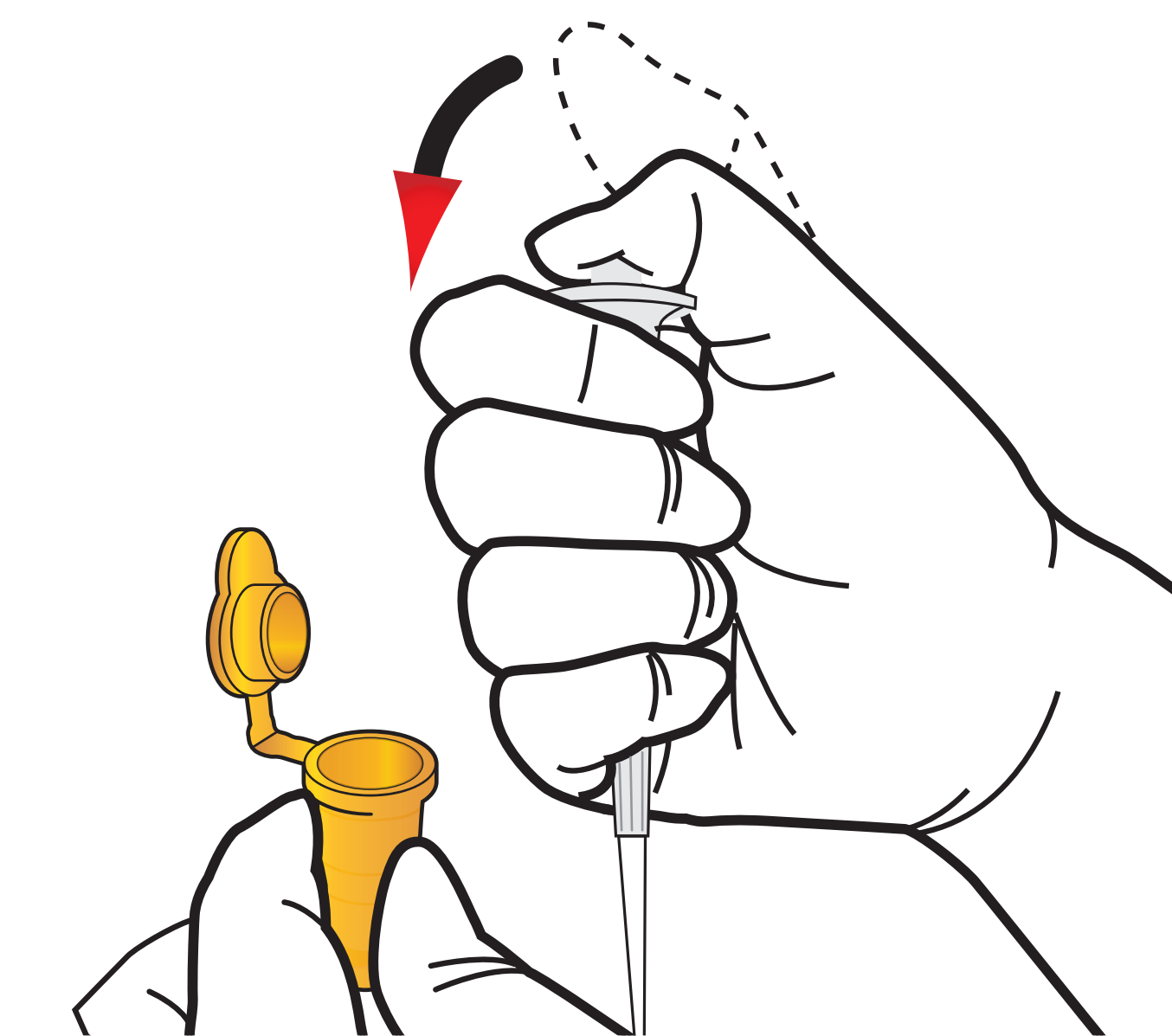
2 Add it into detection buffer tube



3 Shake the detection buffer tube



4 Draw the sample mixture

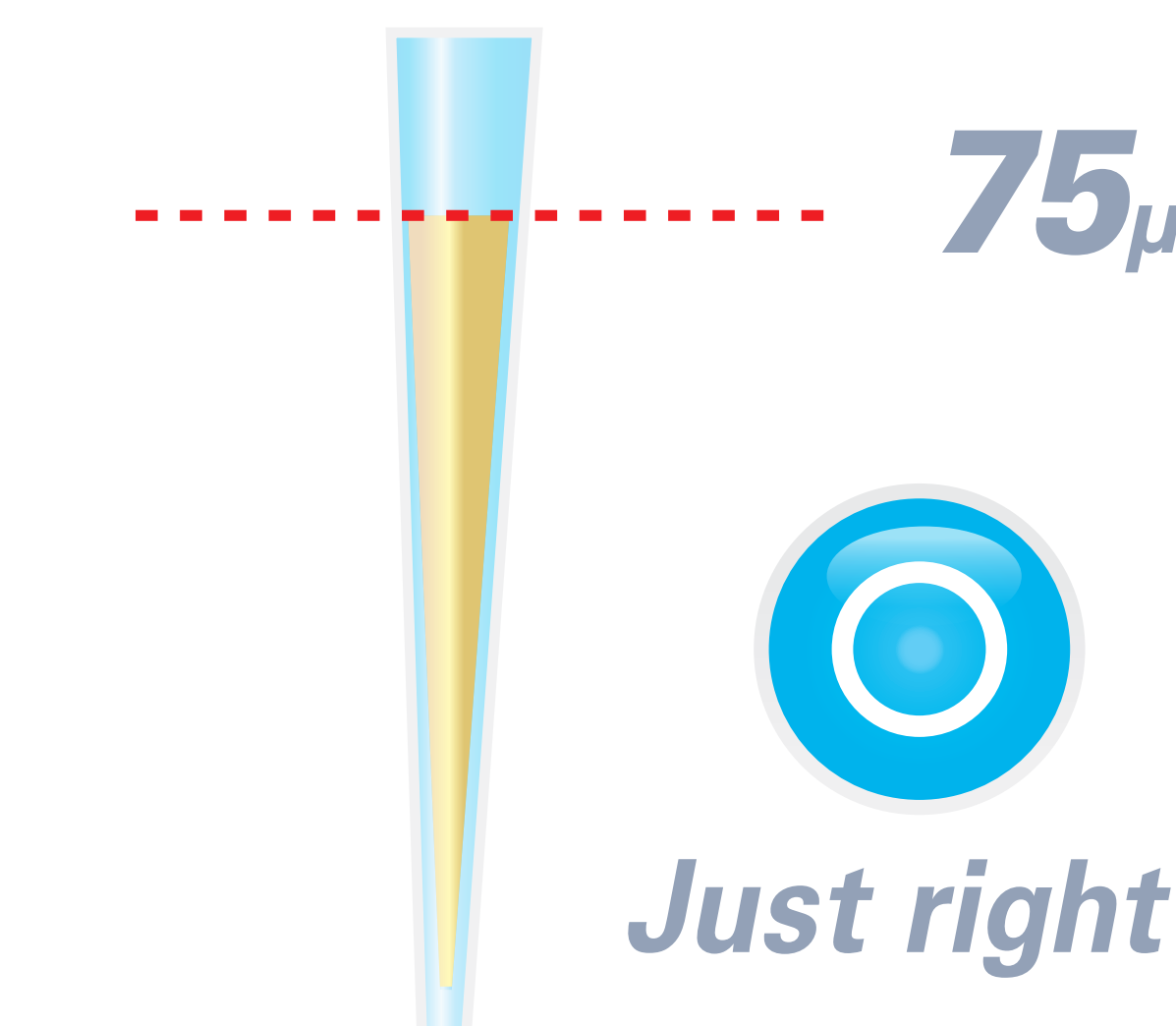
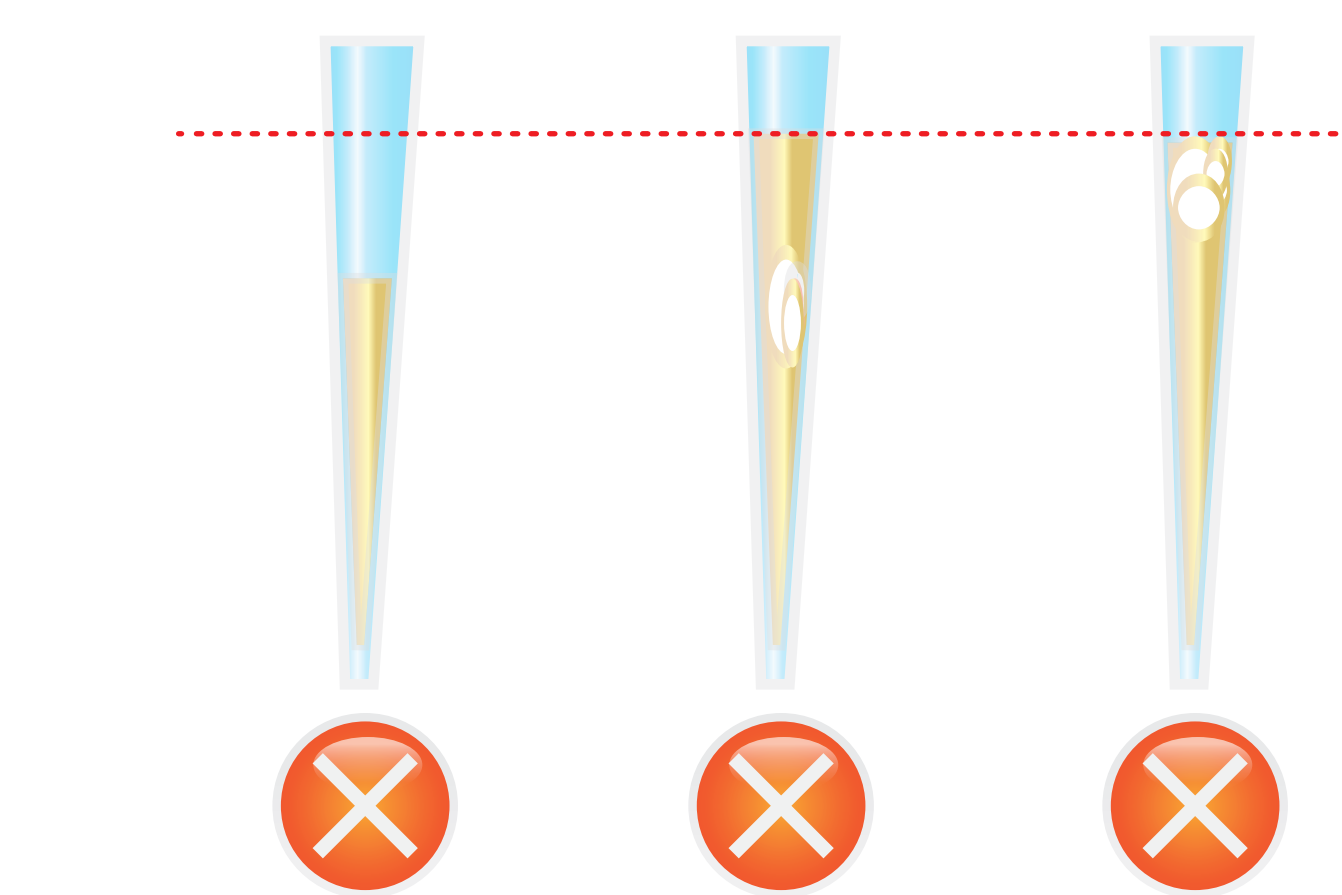


In case of Whole blood

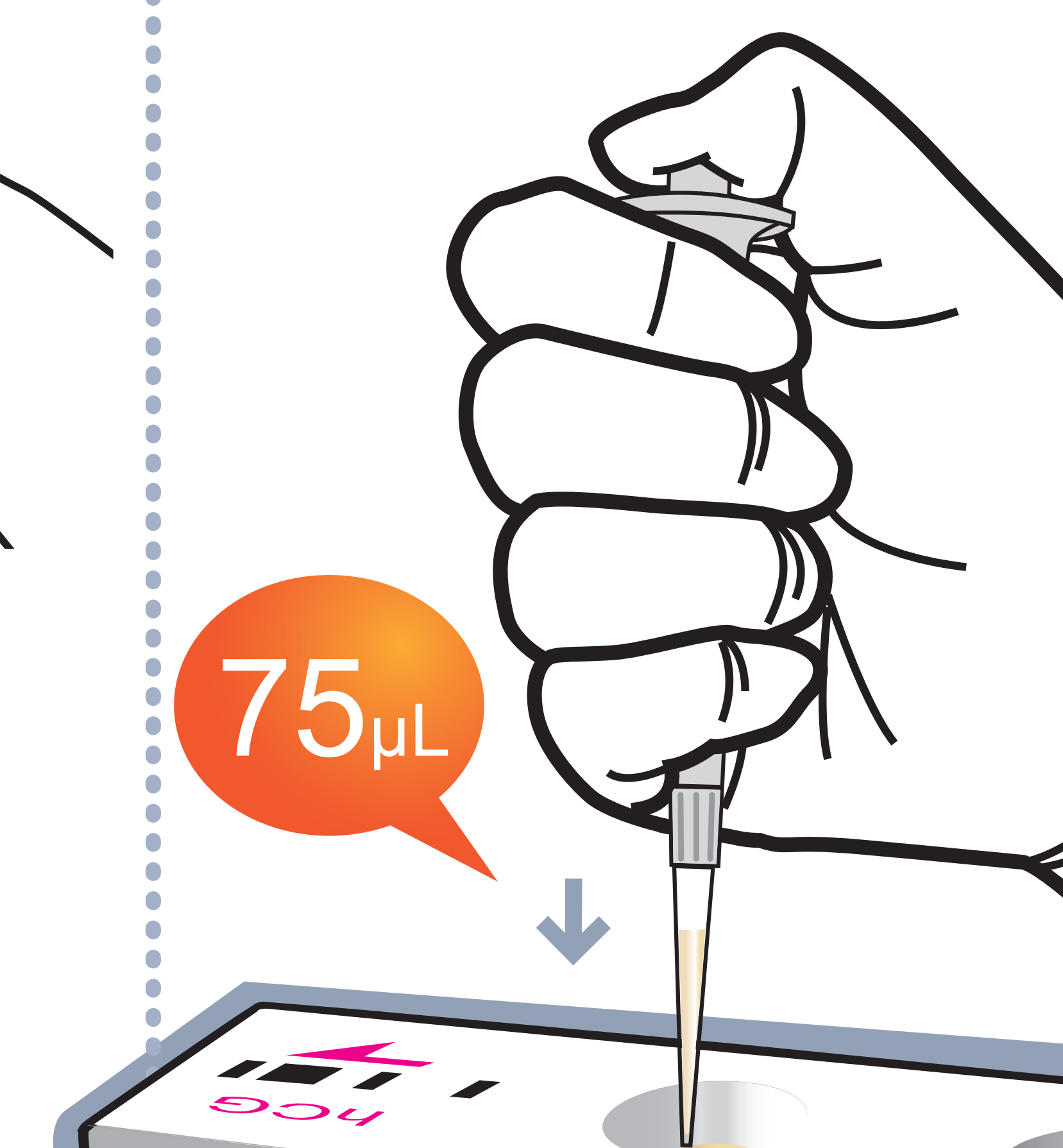
1 Draw whole blood



2 Add it into detection buffer tube

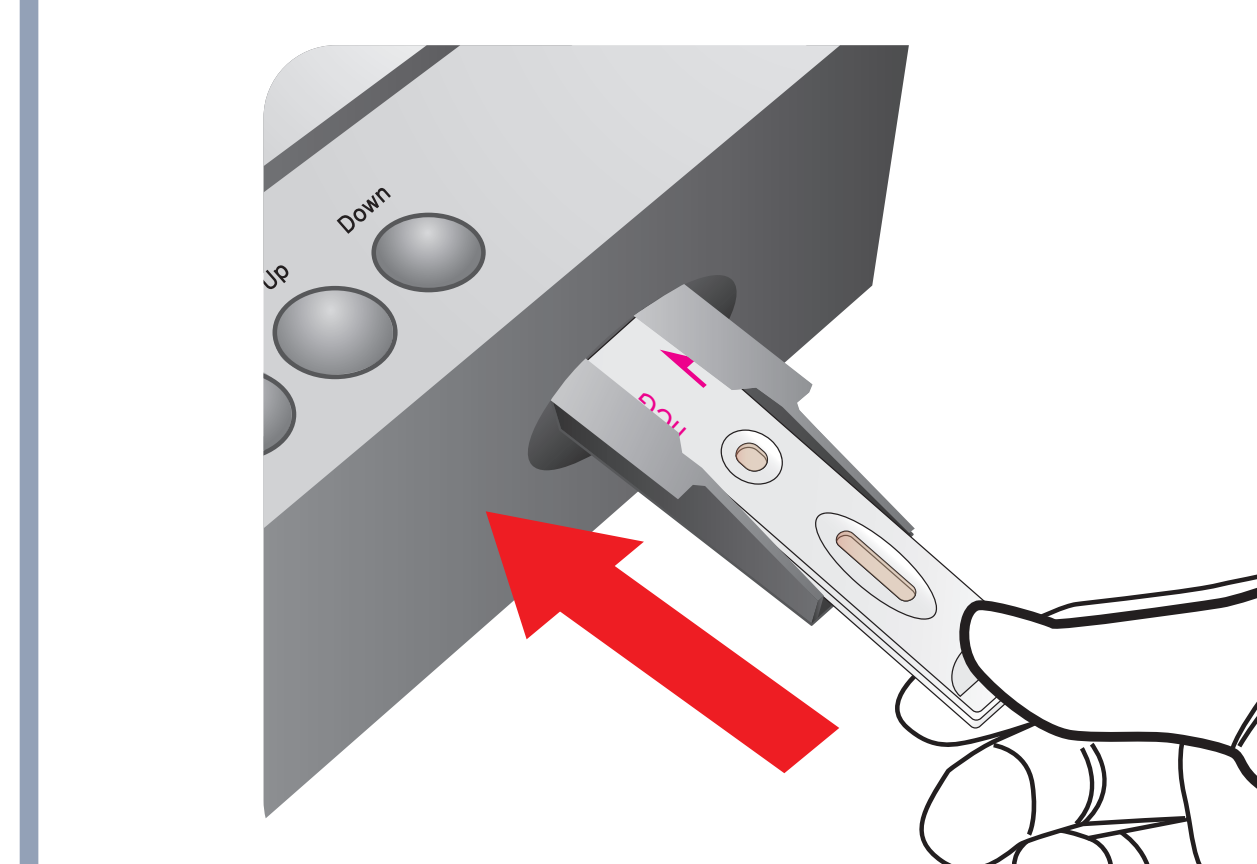


5 Load the sample mixture

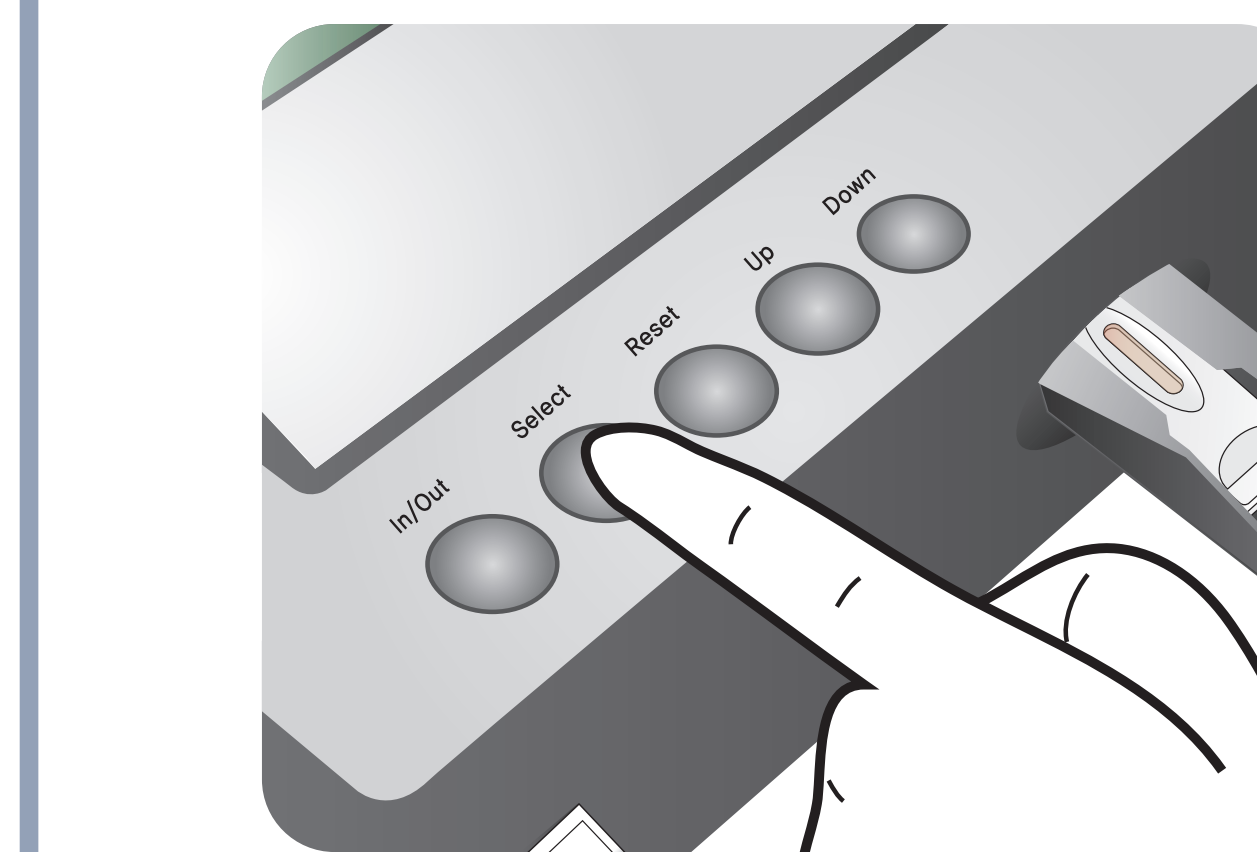


6 Waiting 15 minutes

7 Insert the test cartridge



8 Press 'Select'

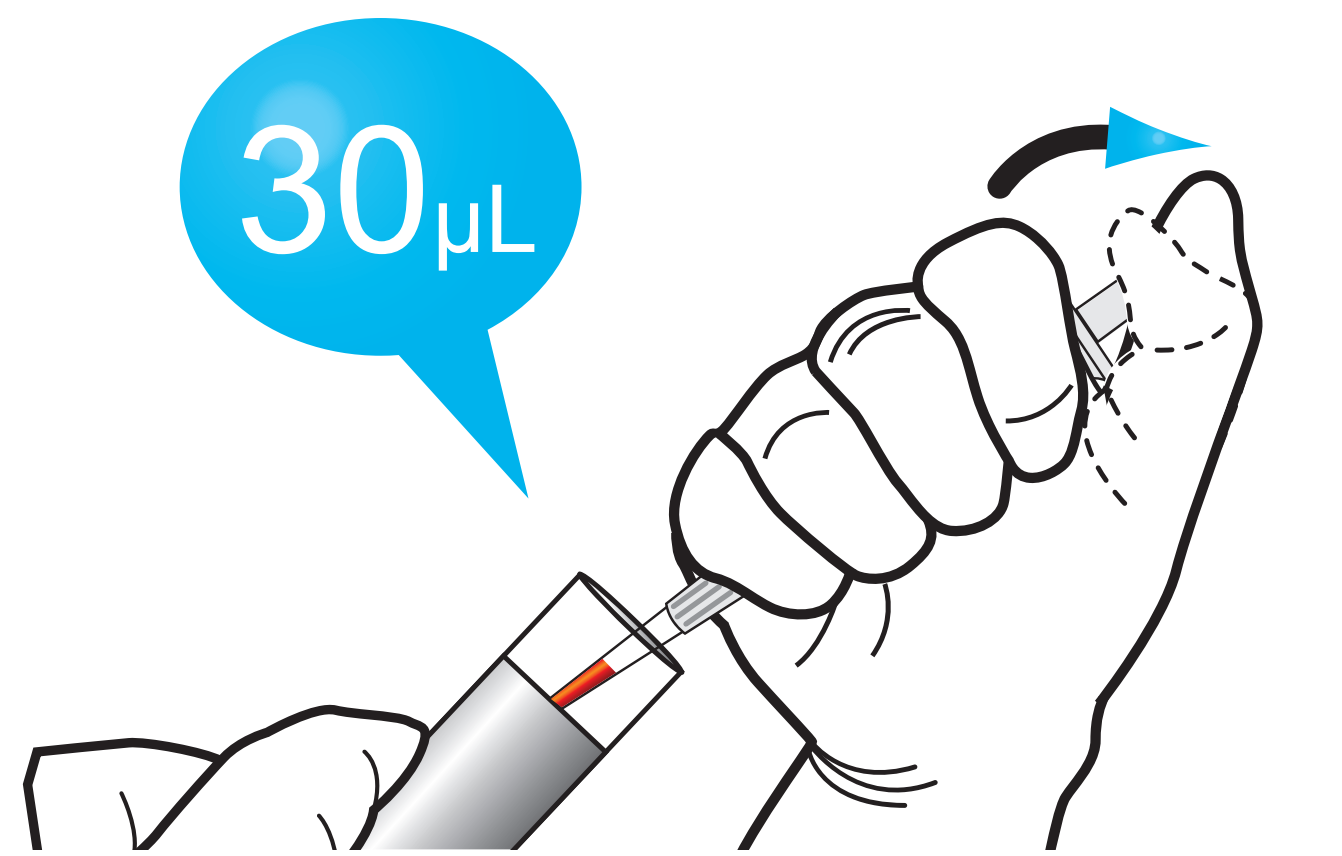


9 Read the test result

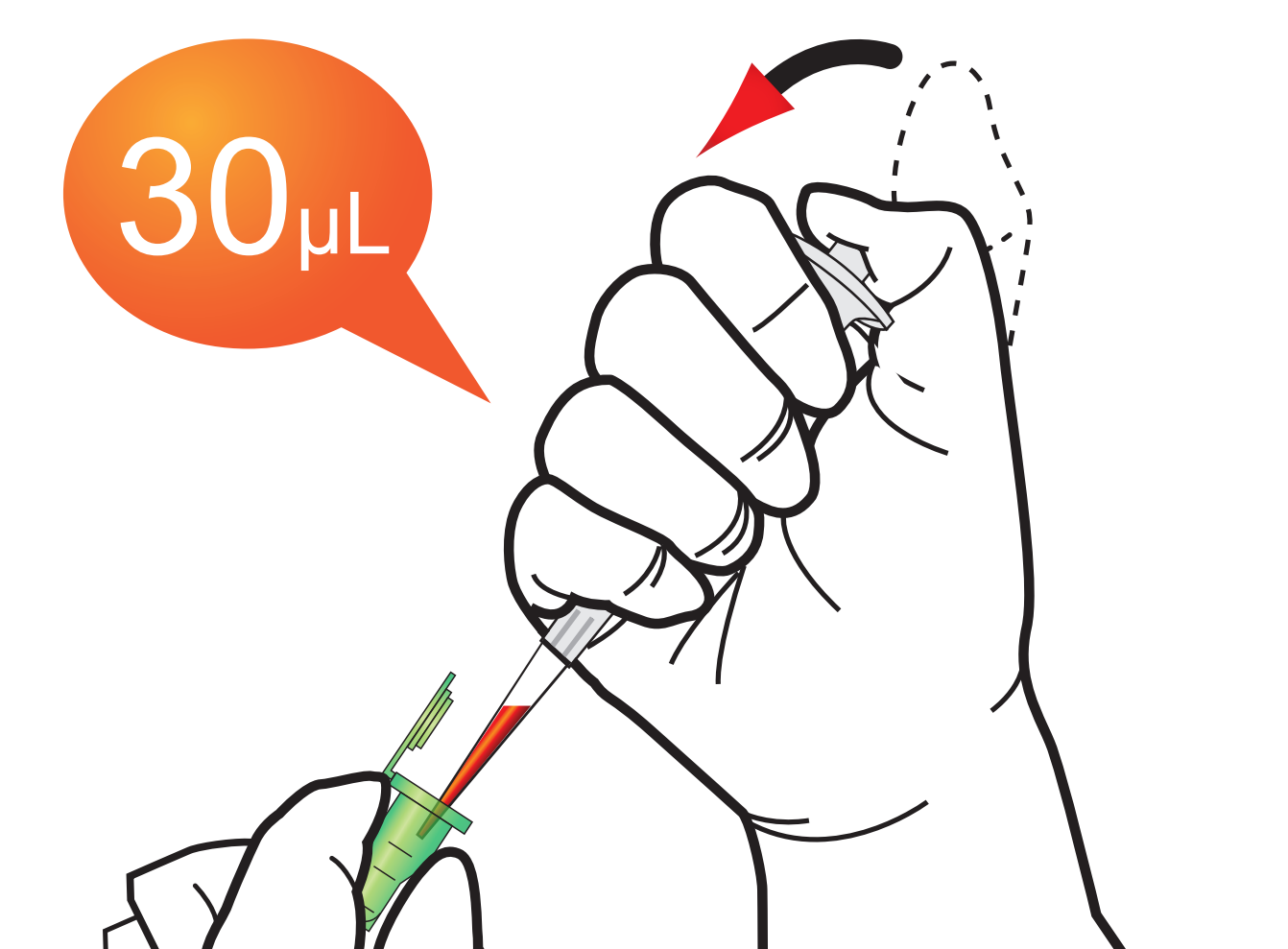


If the test result is higher than 50,000 mIU/mL

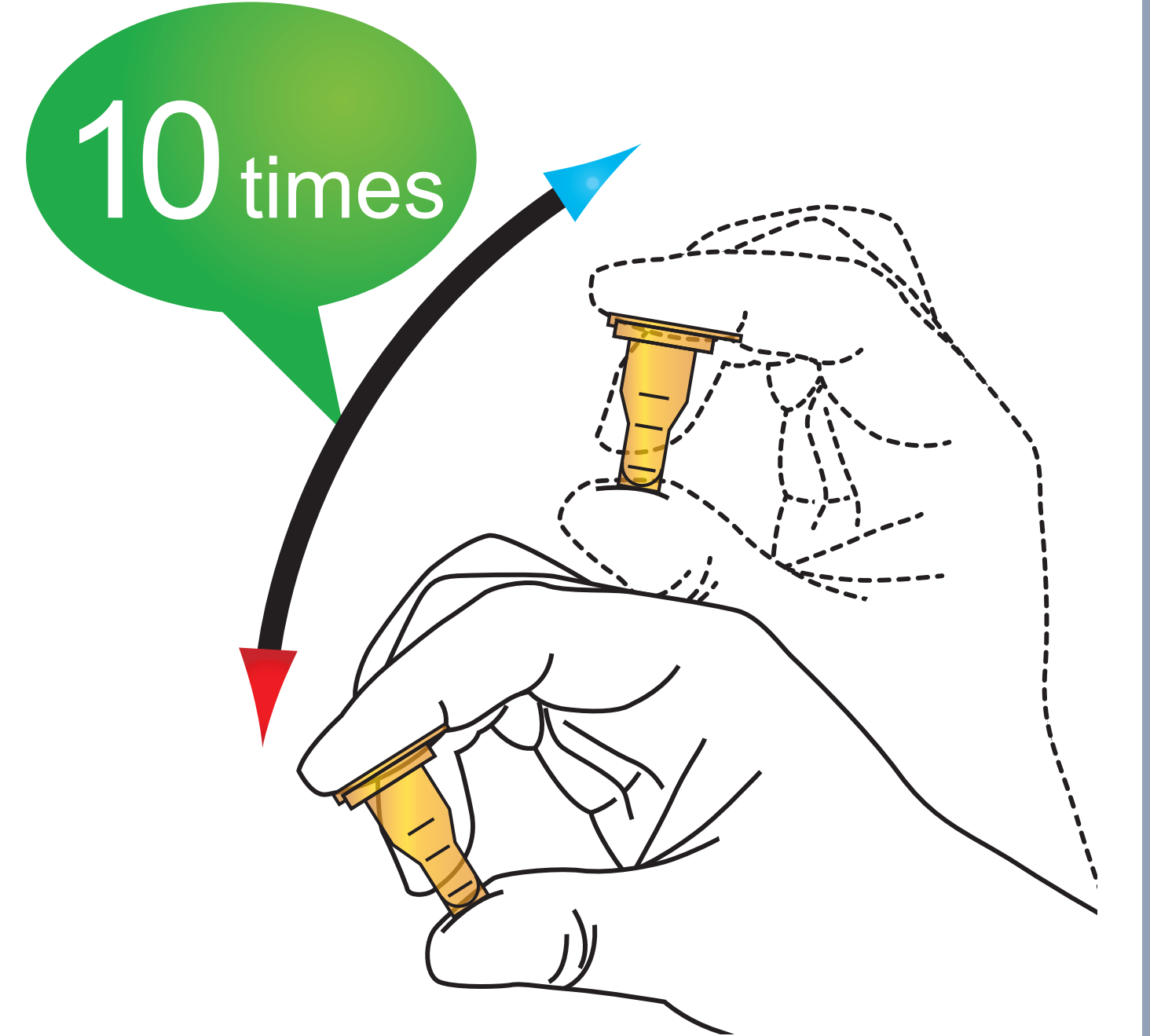
1 Draw Sample



2 Add it into Sample diluent tube



3 Shake the Sample diluent tube



Then, Repeat the test procedure 1 to 9