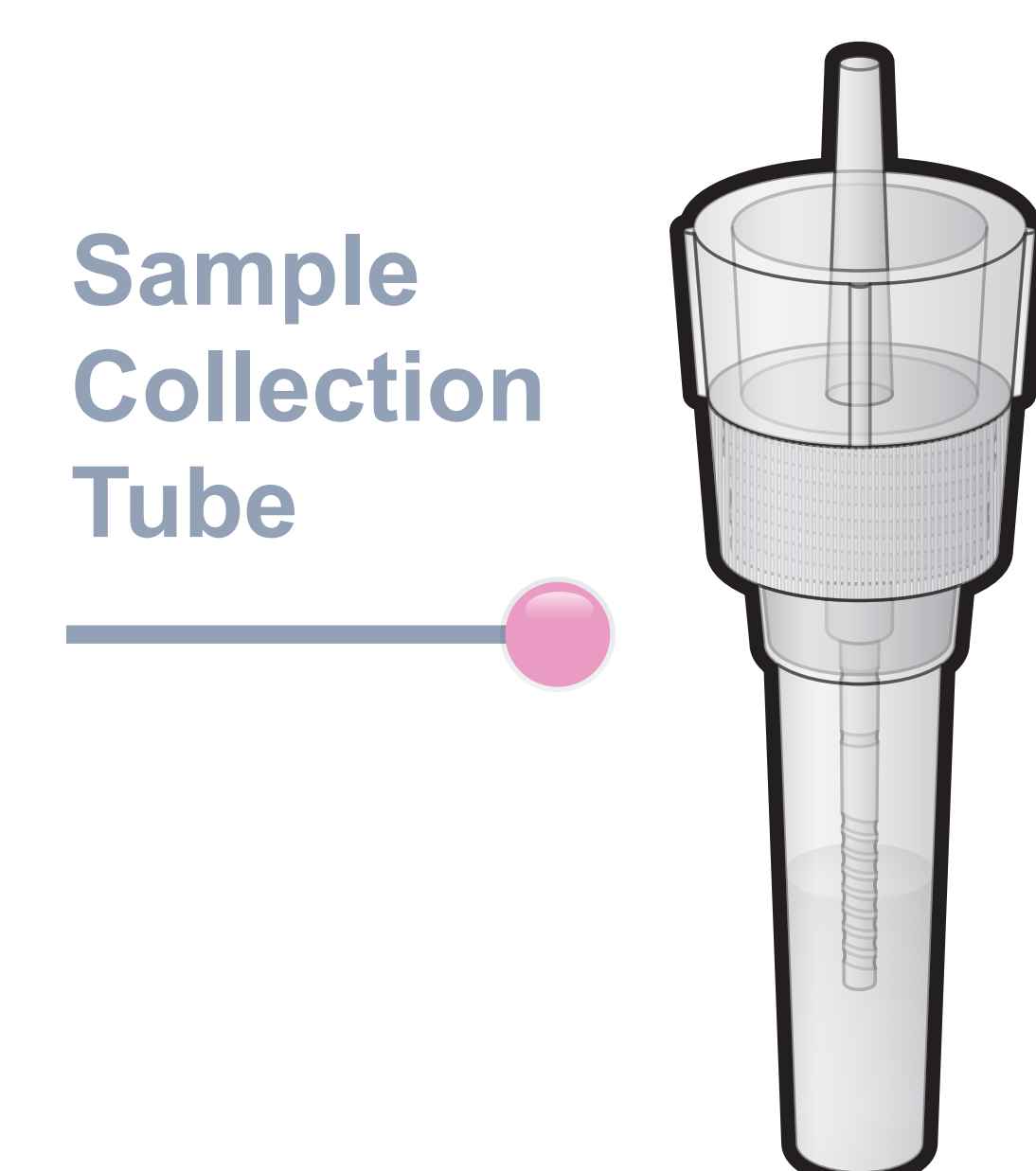
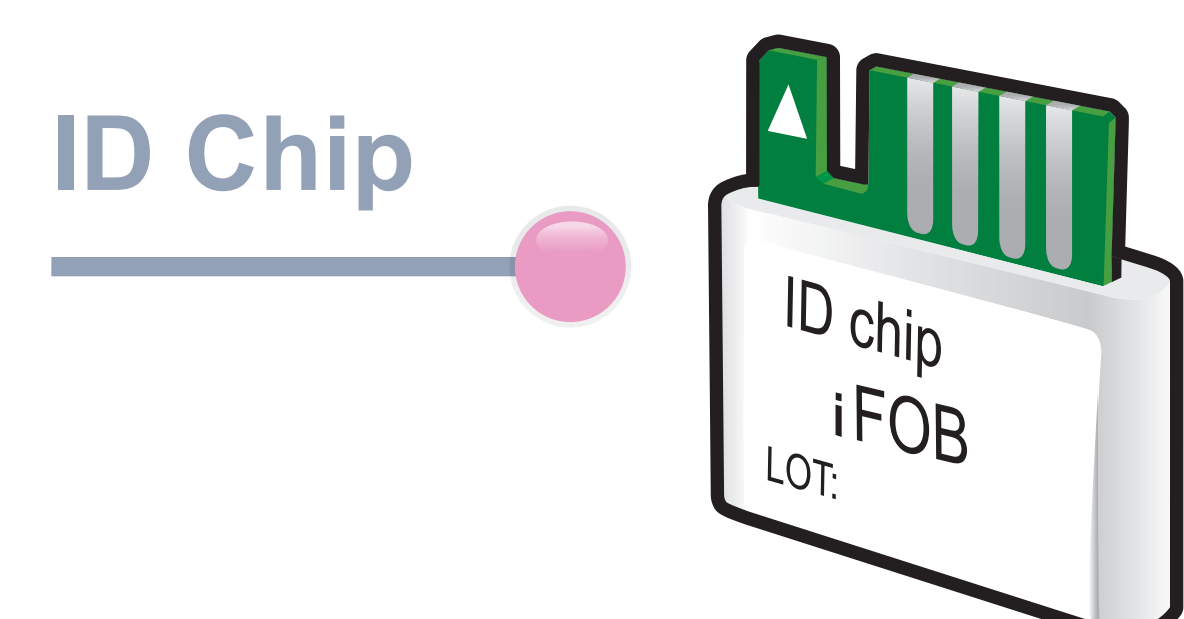


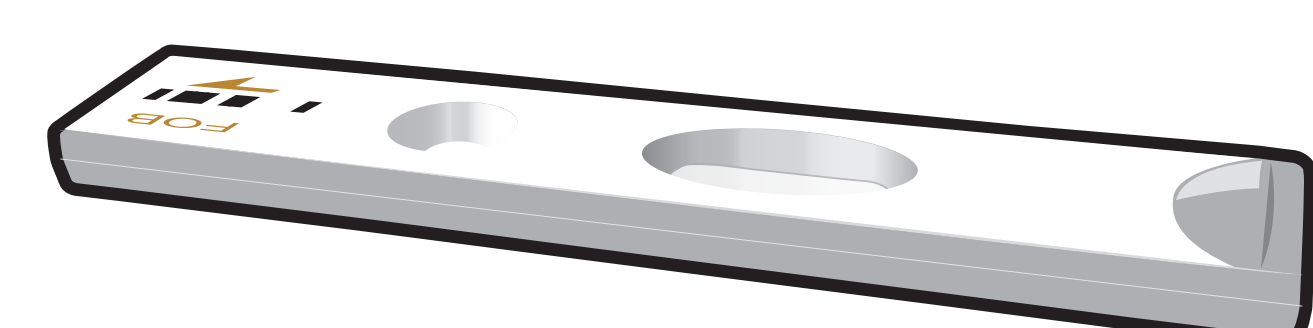
# ichromα™ iFOB

## Test Setup

### Test Components



### Test Cartridge



### ichromα Reader

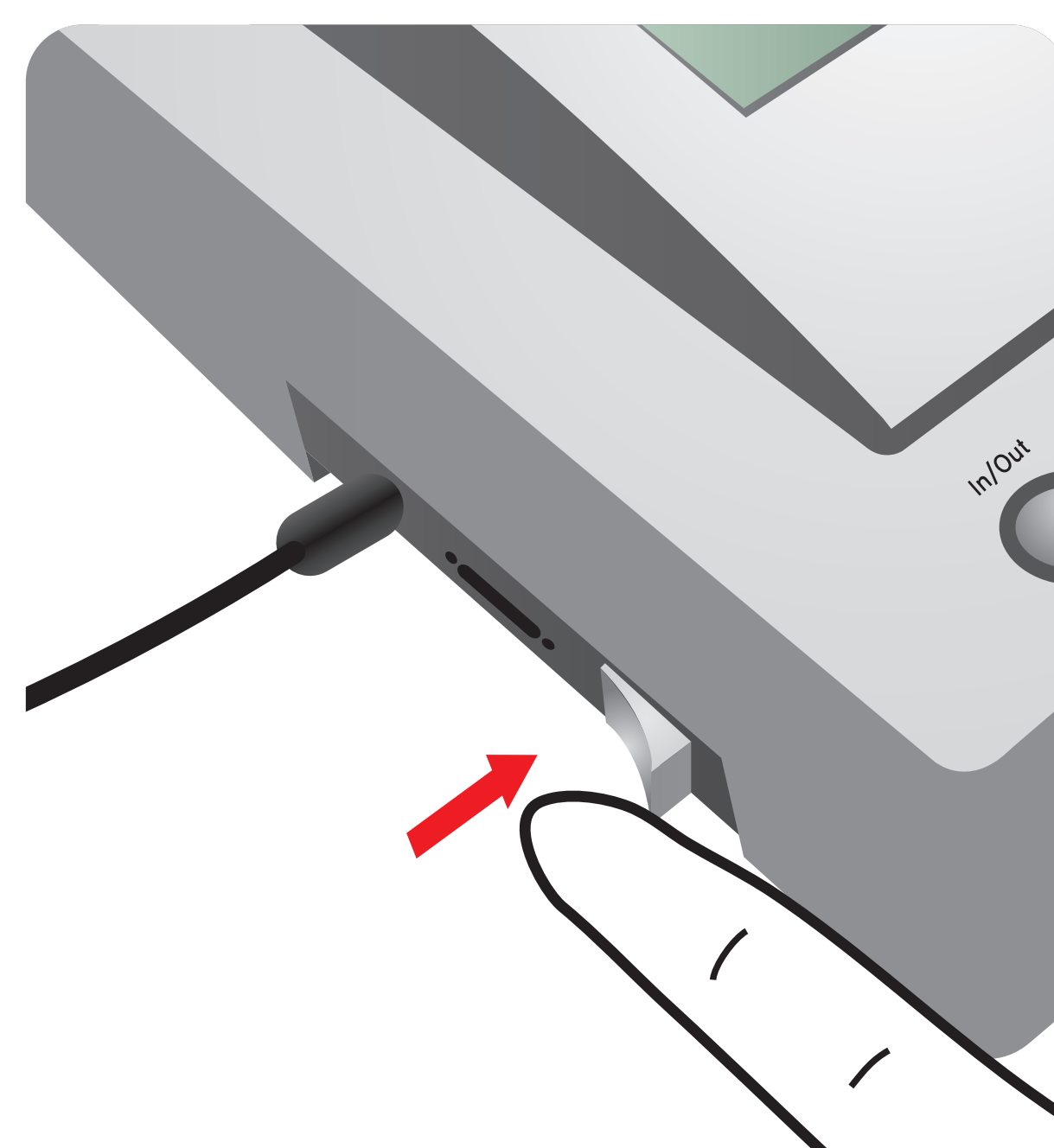


### Important

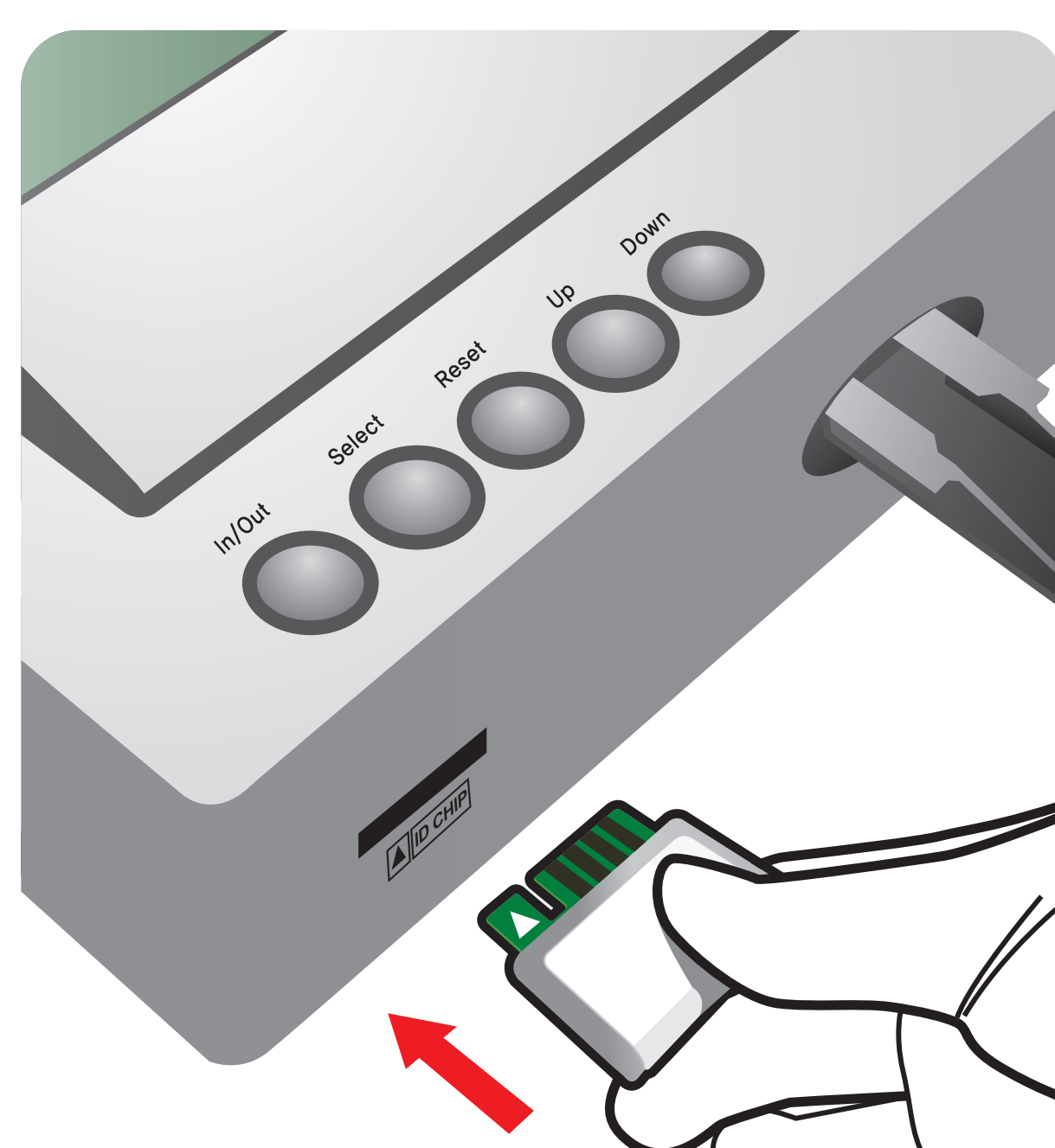
Allow 'Detection Buffer Tube' to attain room temperature at least for 30 minutes before performing the test

Make sure that lot number of the 'ID Chip' is exactly same as the lot number of 'Test Cartridge' and 'Detection Buffer Tube'

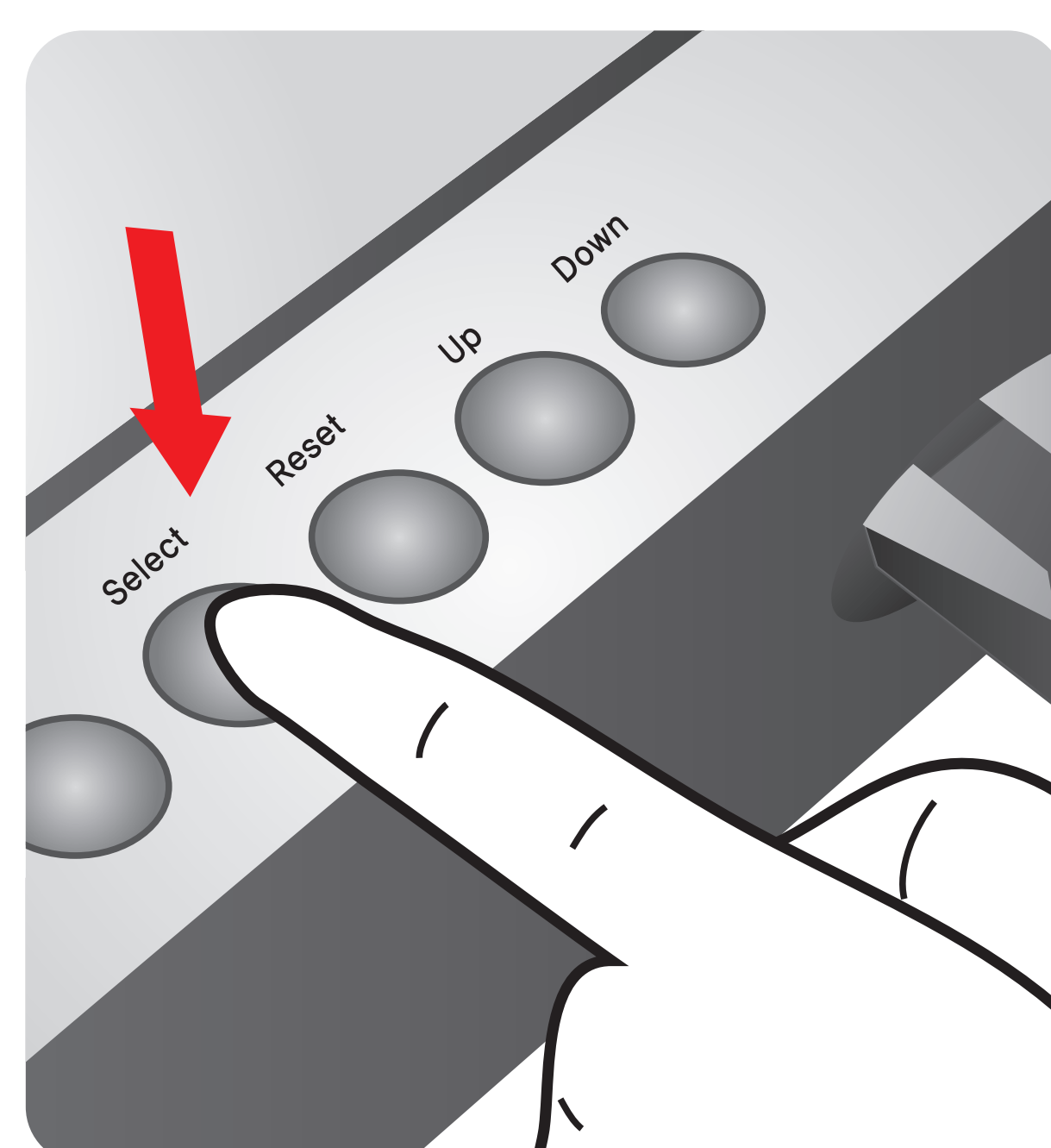
**1** Turn the power switch 'On'



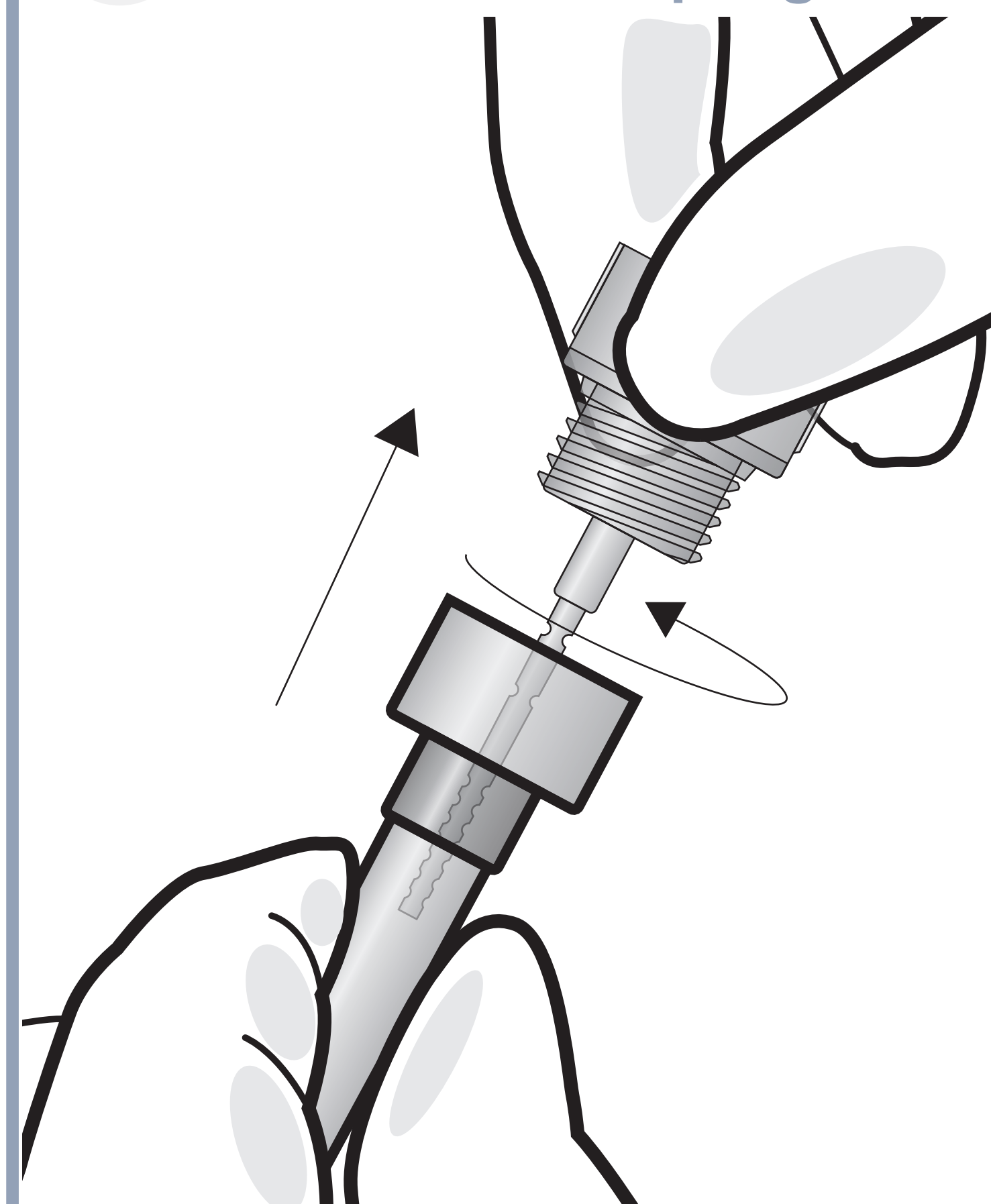
**2** Insert ID Chip



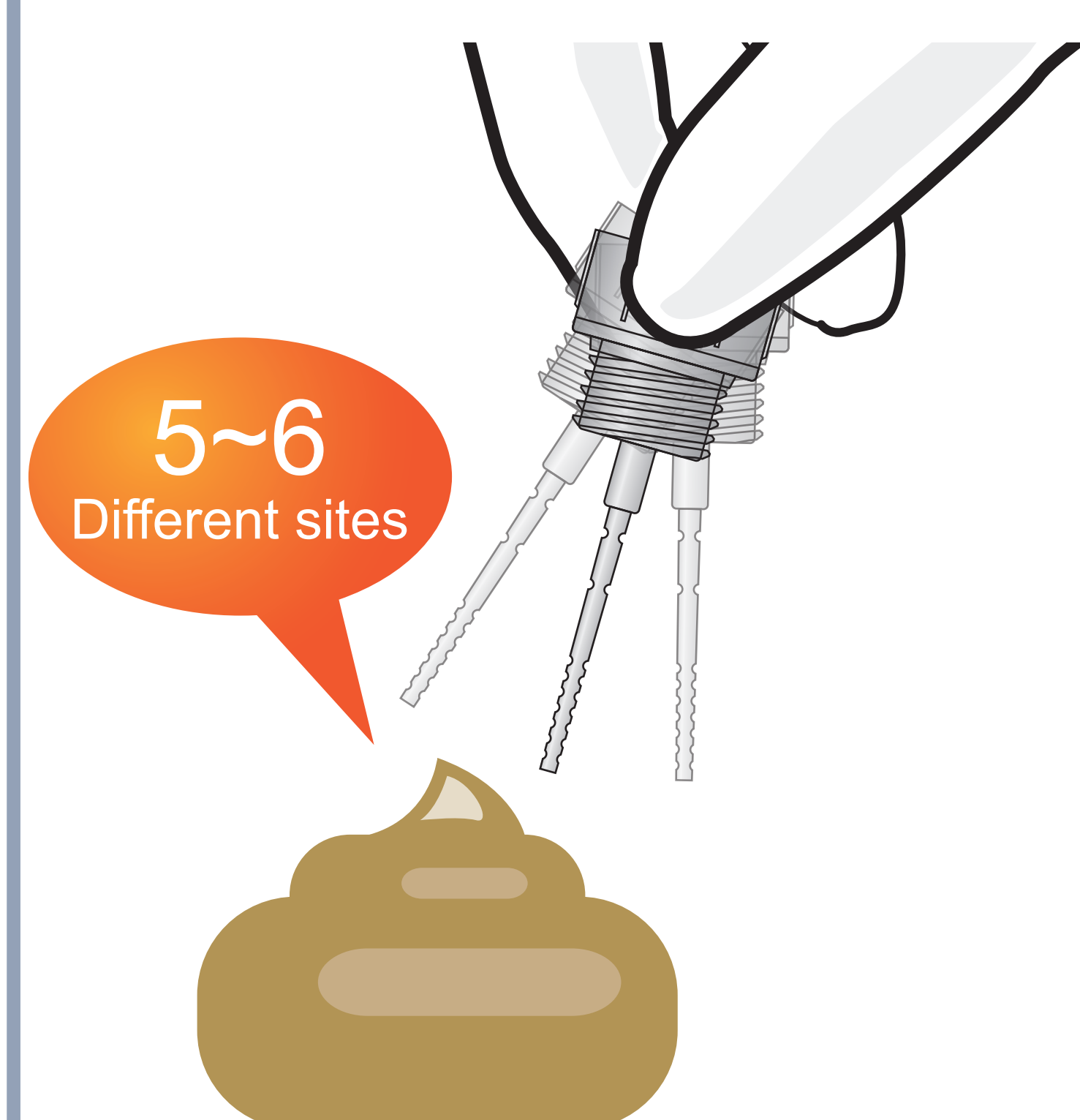
**3** Press 'Select'



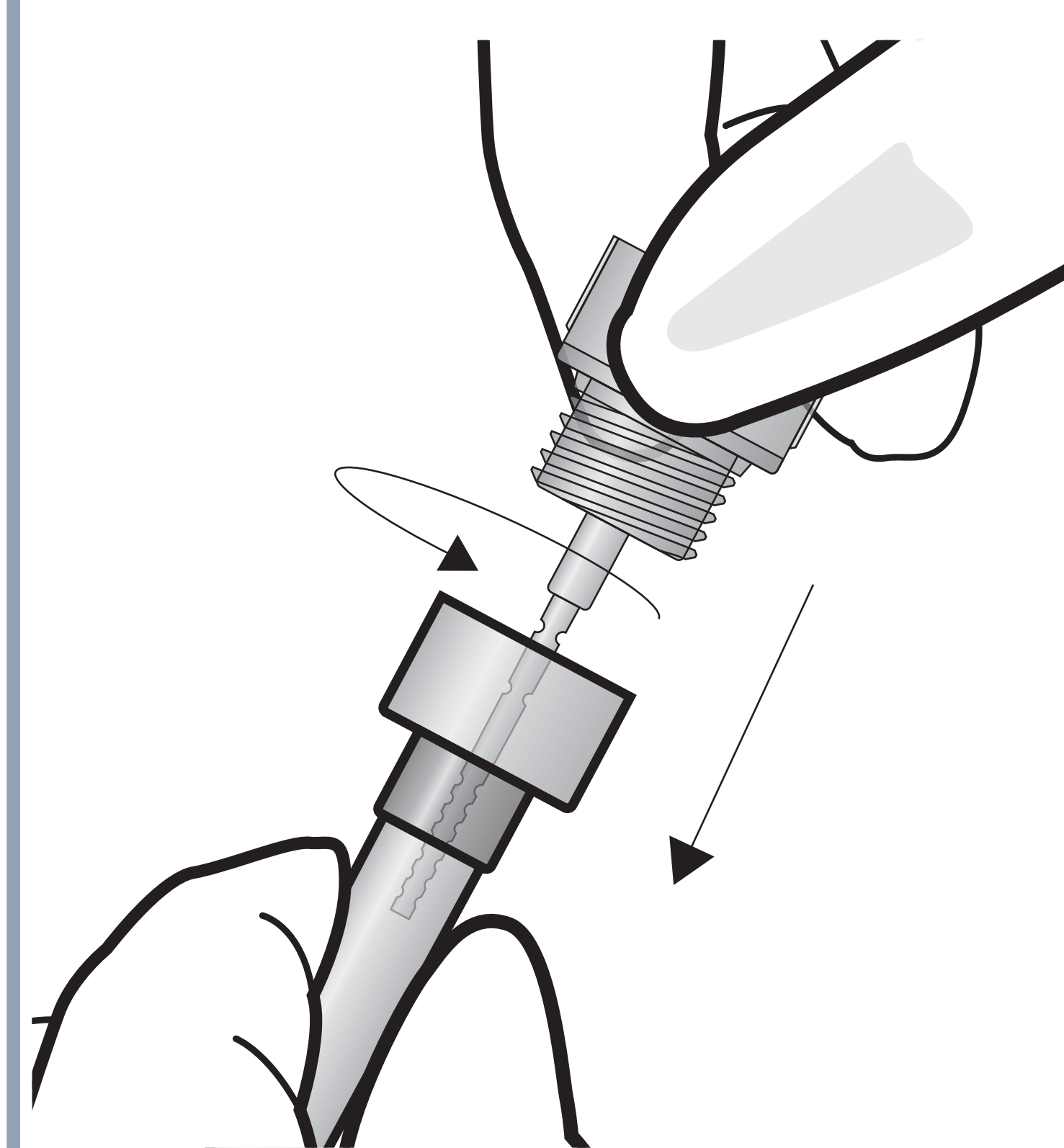
**1** Unscrew the cap and remove the sampling stick



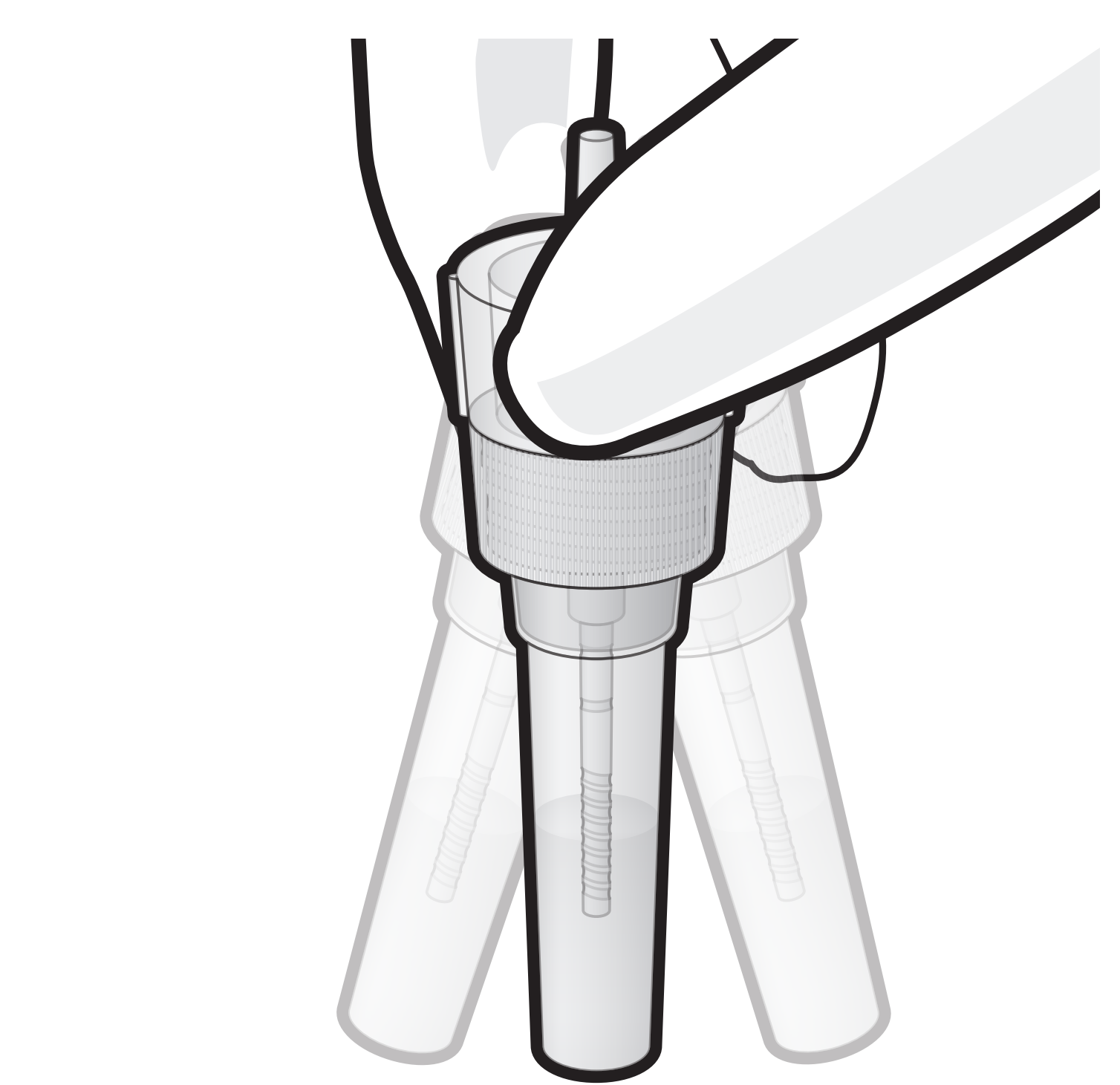
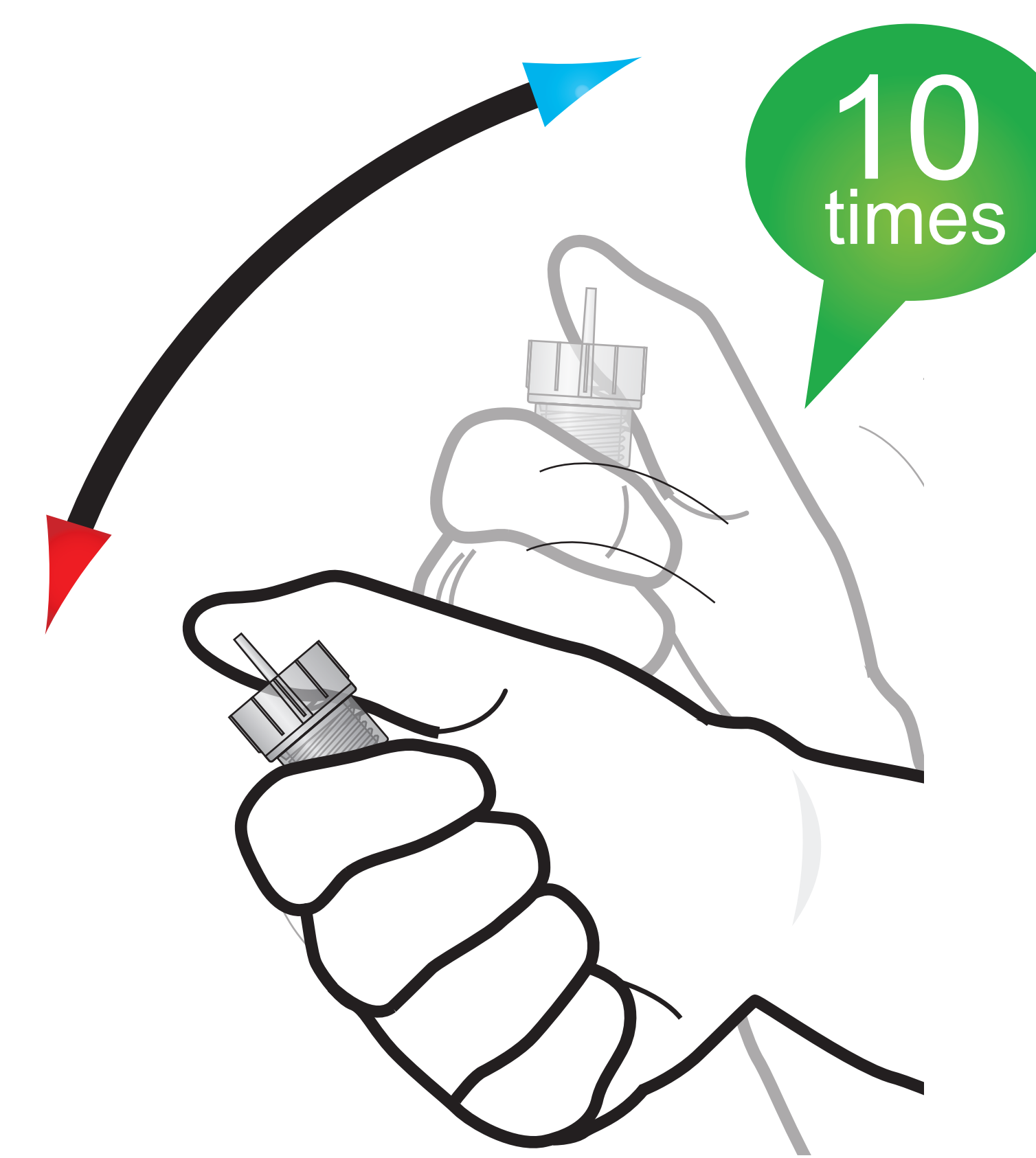
**2** Insert the sampling stick into the sample at 5~6 different sites



**3** Re-apply and tighten the cap

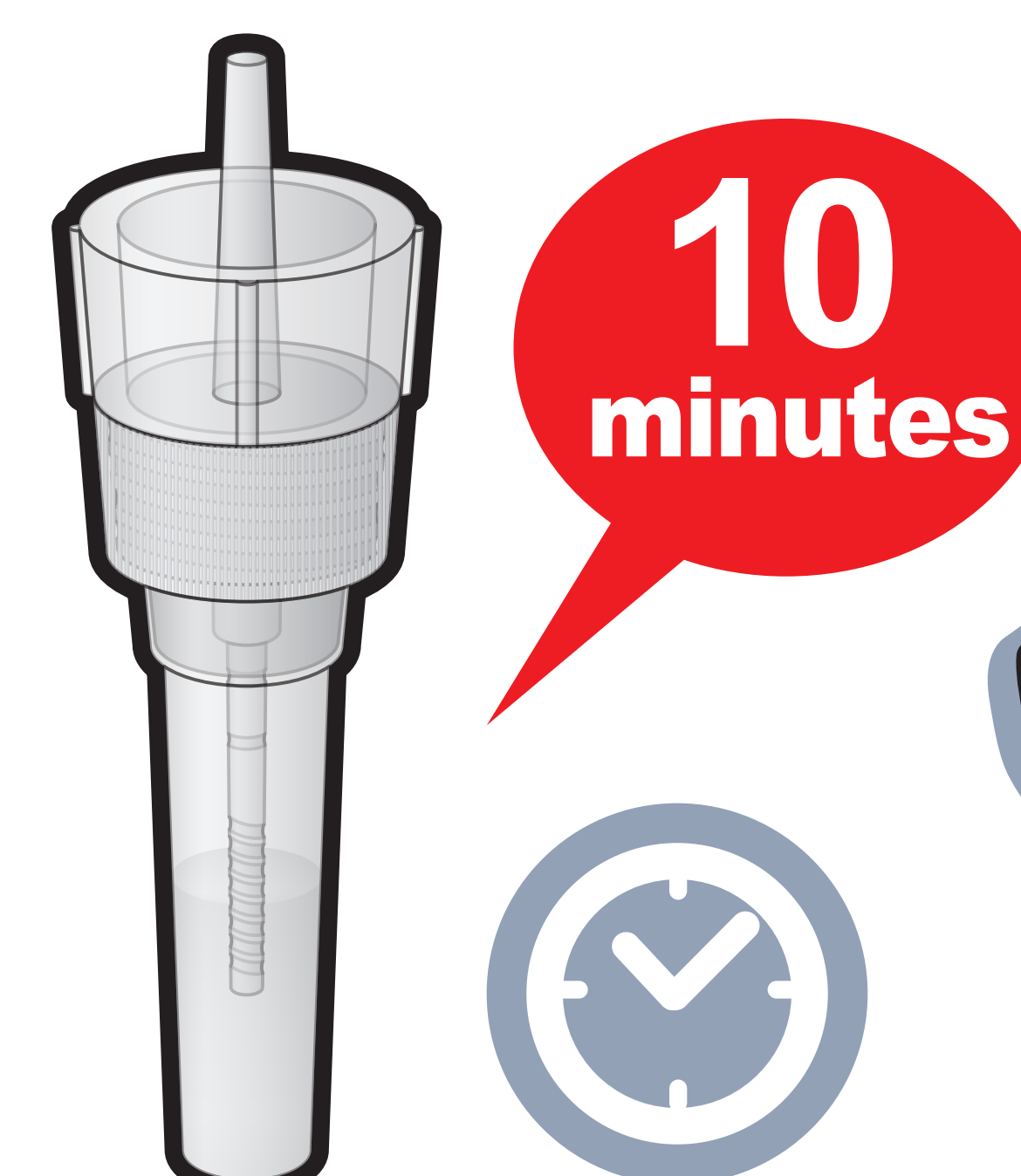


**4** Shake the sample collection tube 10 times

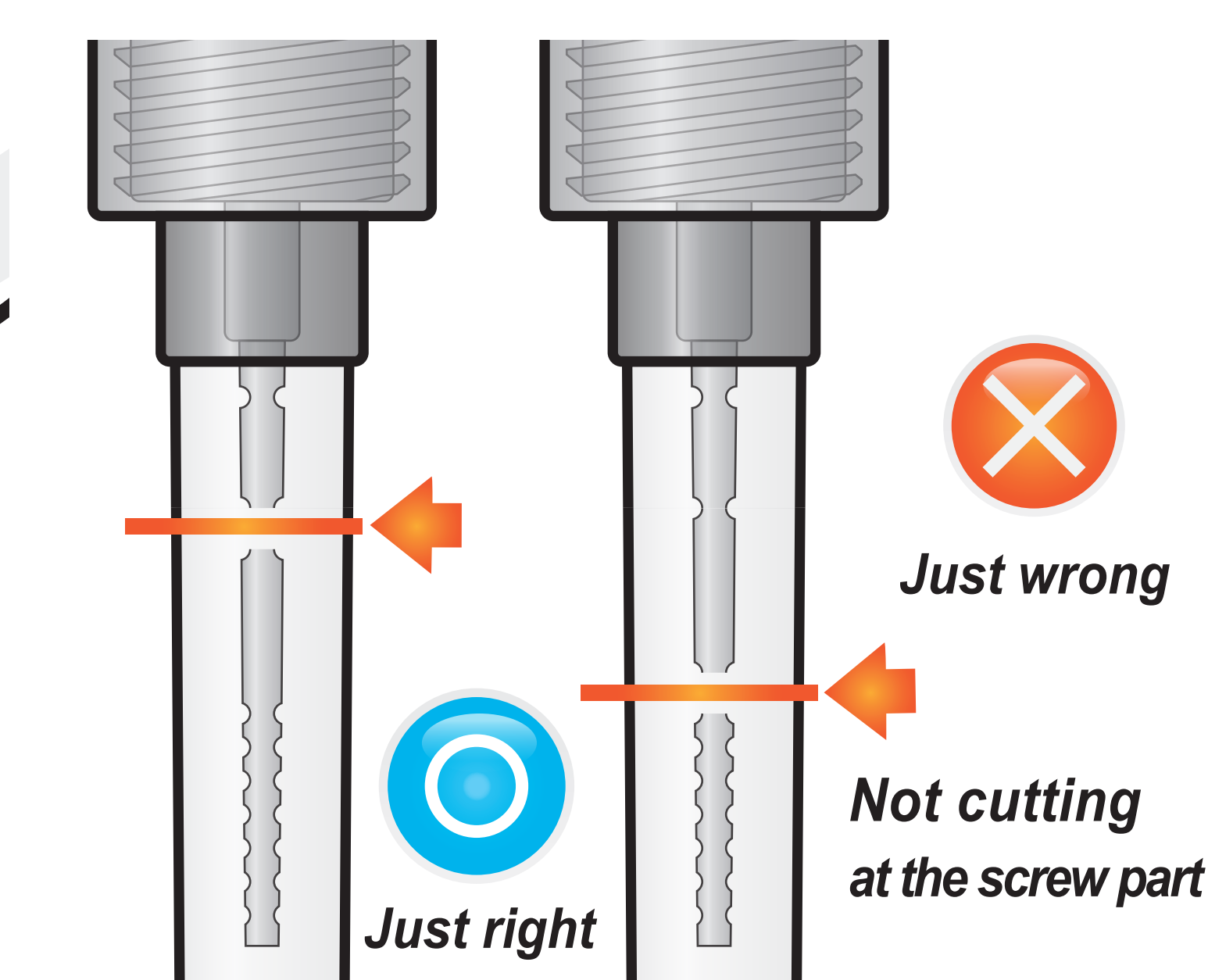
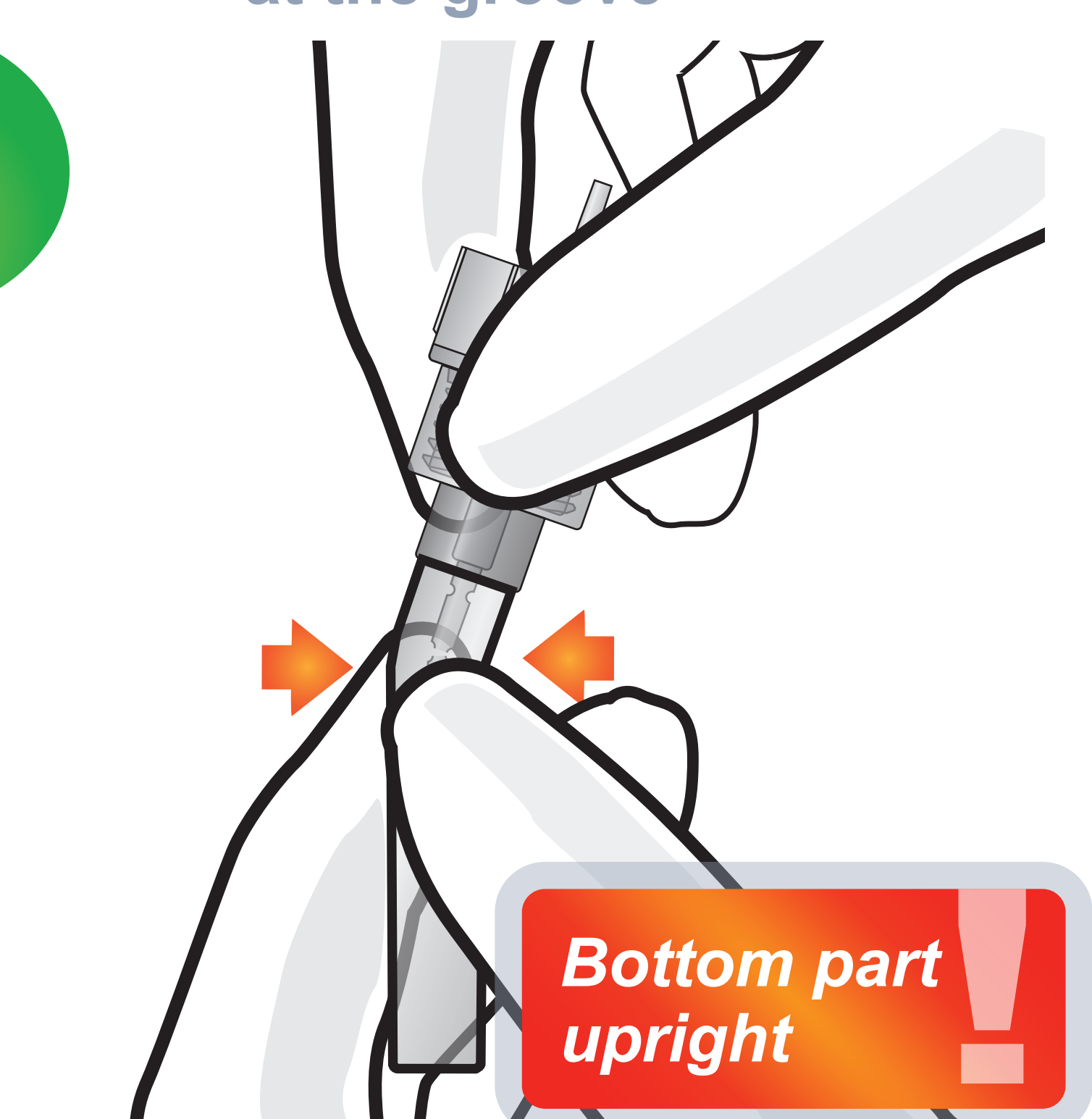


Let all solution settle to the bottom of the tube by a whipping motion at the end

**5** Leave the sample tube upright for 10 minutes



**6** Cut the sampling stick by bending 2~3 times at the groove



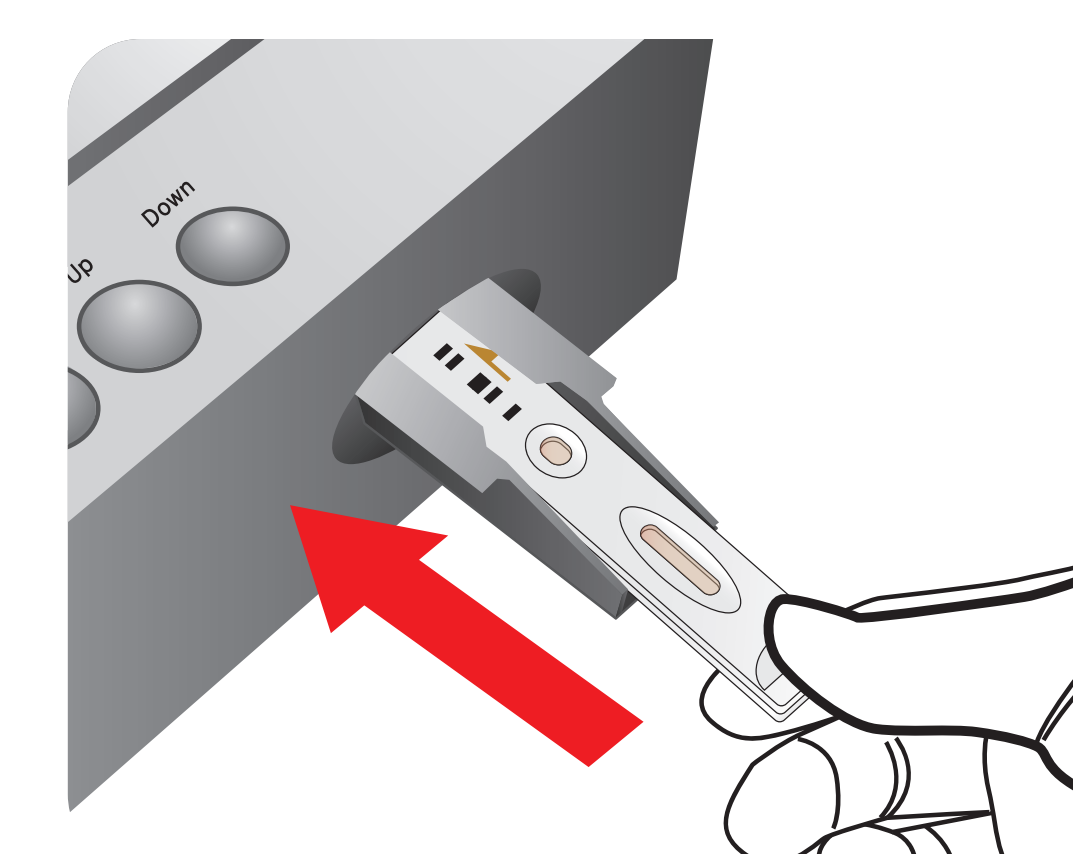
**7** Load the sample mixture



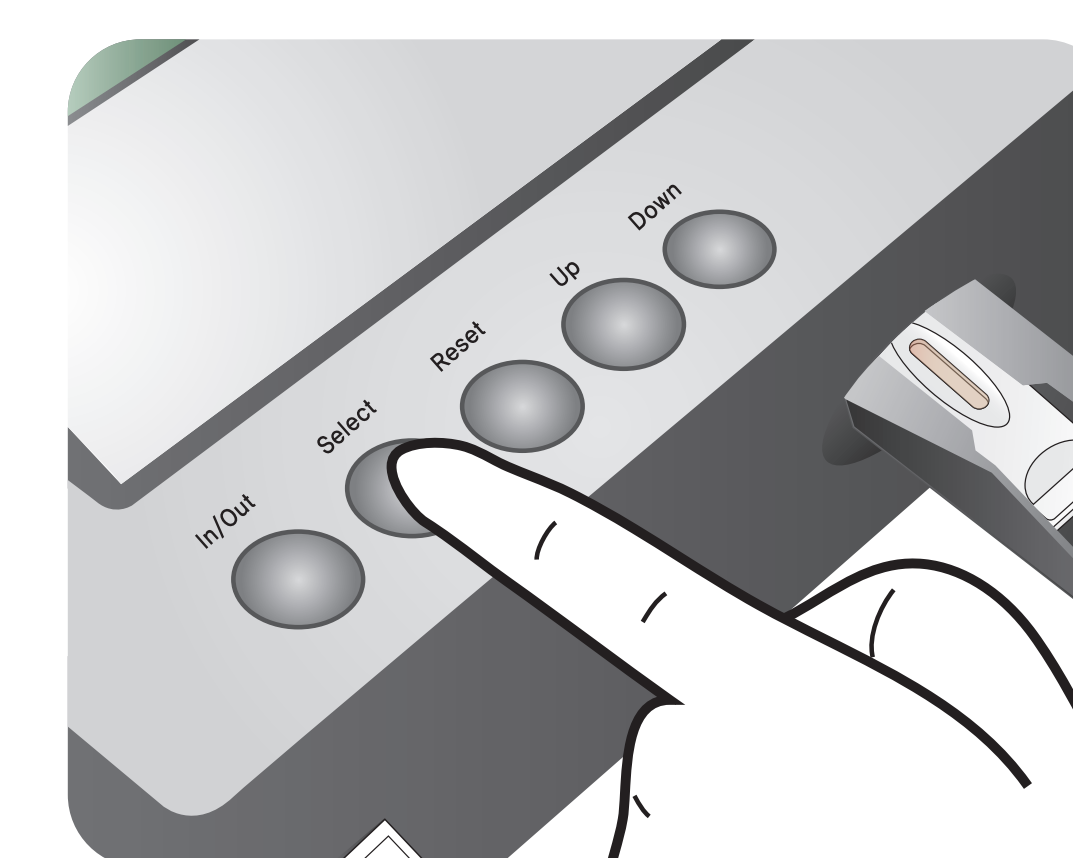
**8** Waiting 10 minutes



**9** Insert the test cartridge



**10** Press 'Select'



**11** Read the test result

