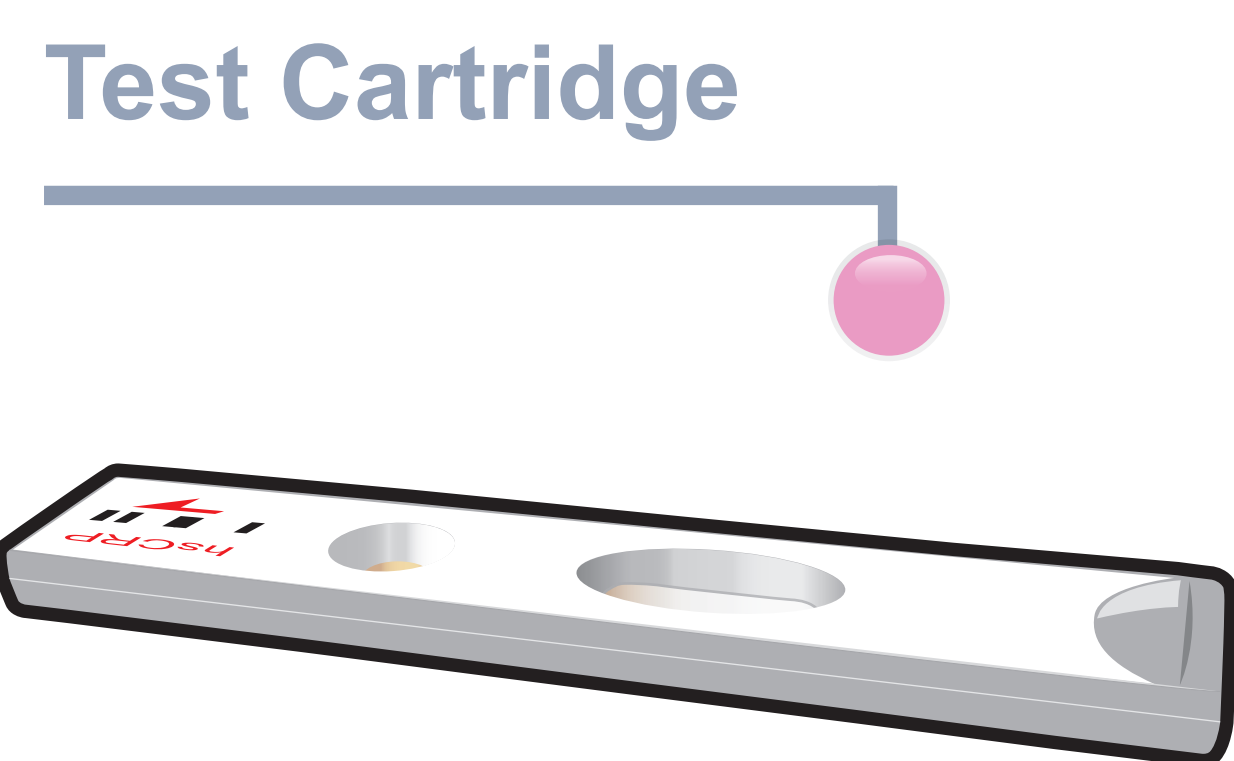
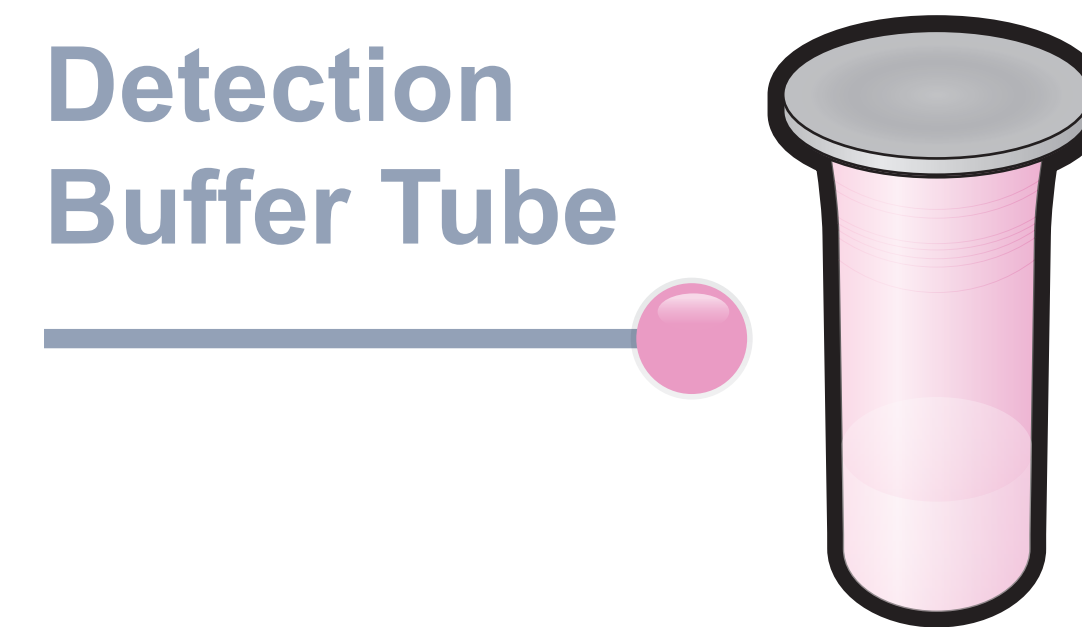
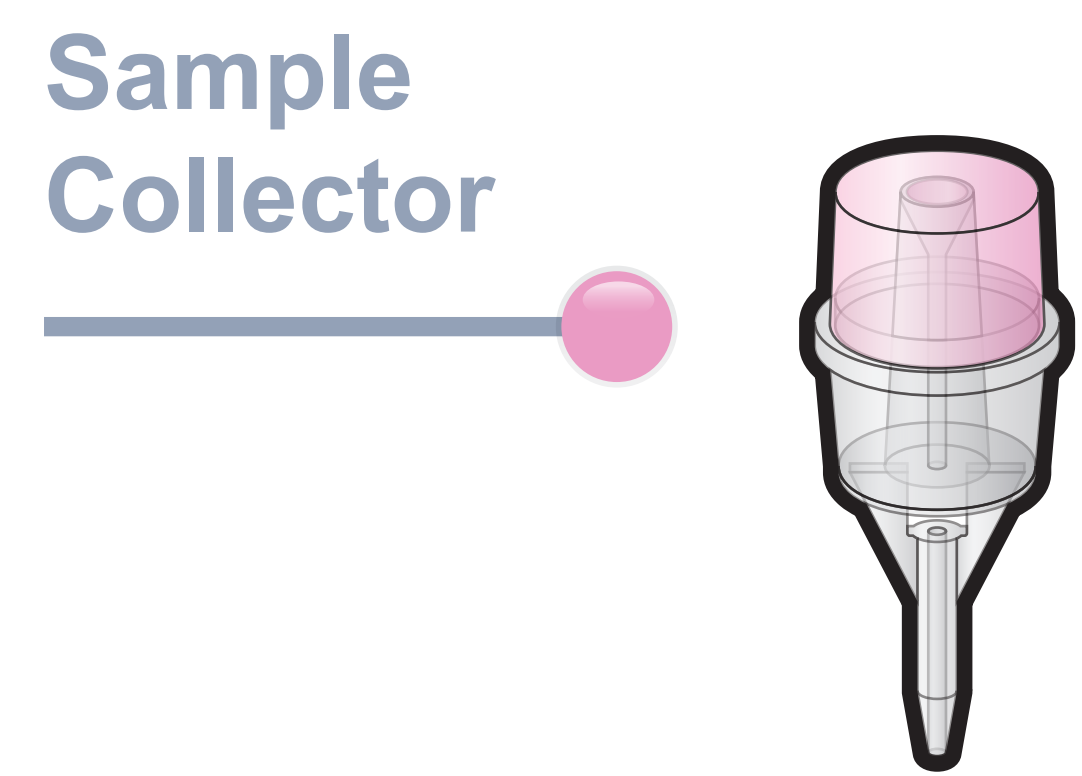
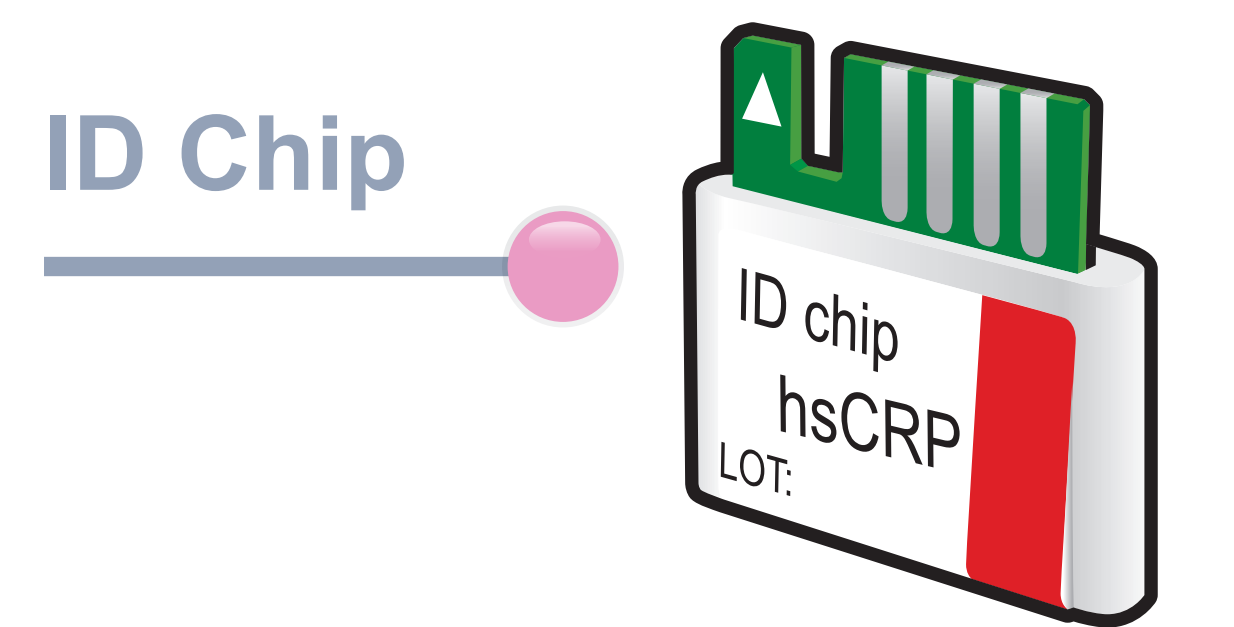


ichromα™ hsCRP

Test Setup

Test Components

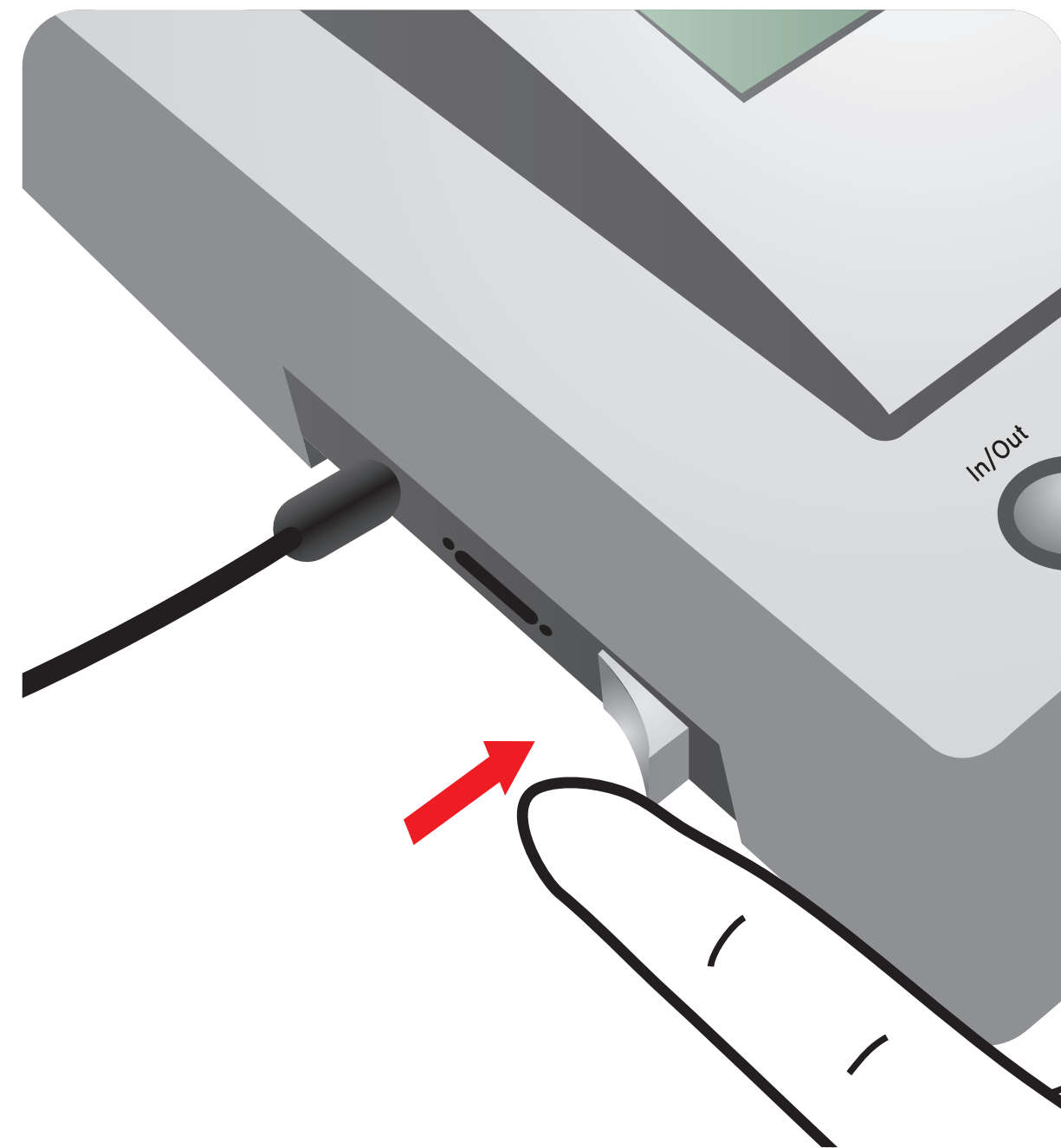


Important

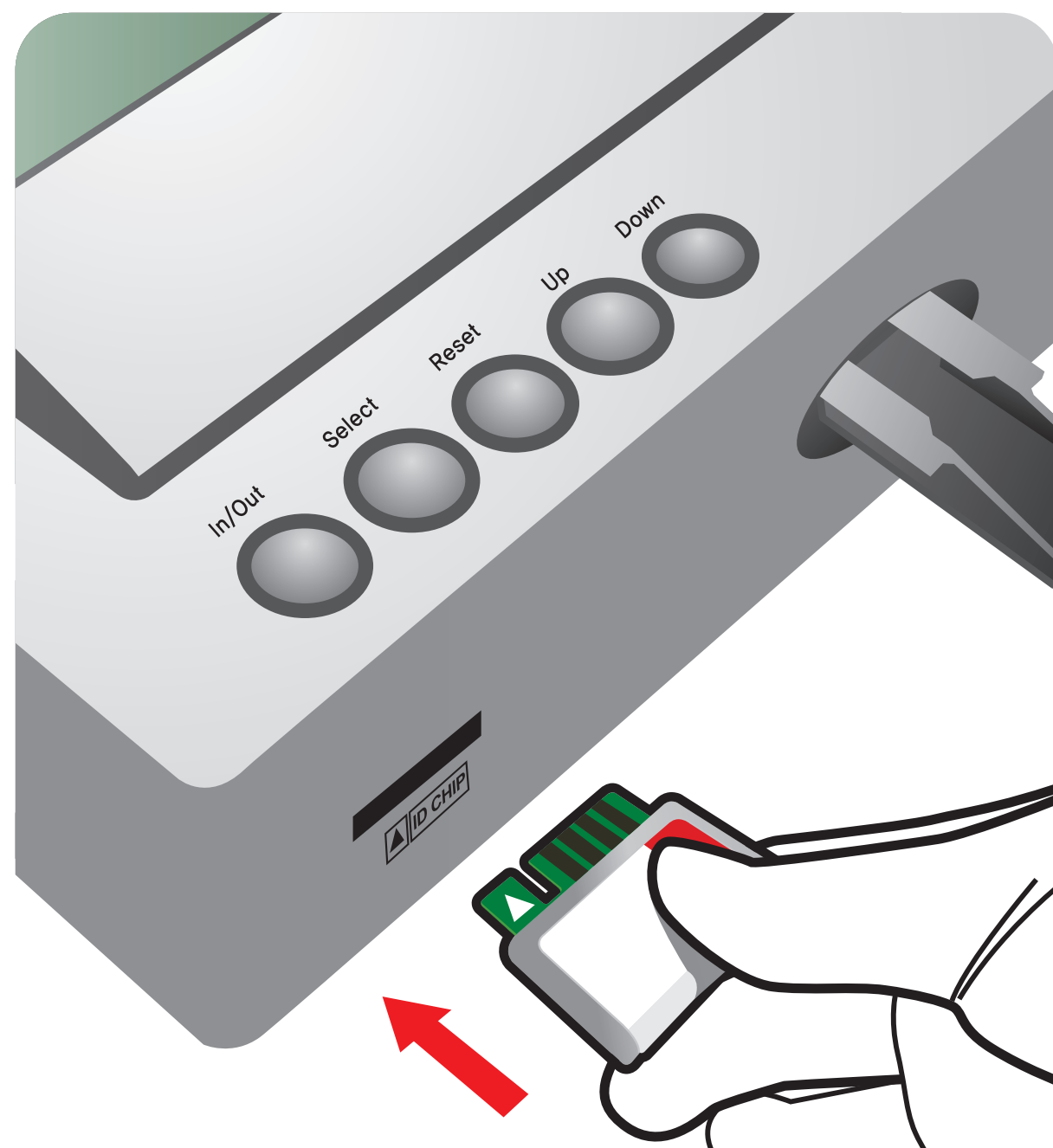
Allow 'Detection Buffer Tube' to attain room temperature at least for 30 minutes before performing the test

Make sure that lot number of the 'ID Chip' is exactly same as the lot number of 'Test Cartridge' and Detection Buffer Tube

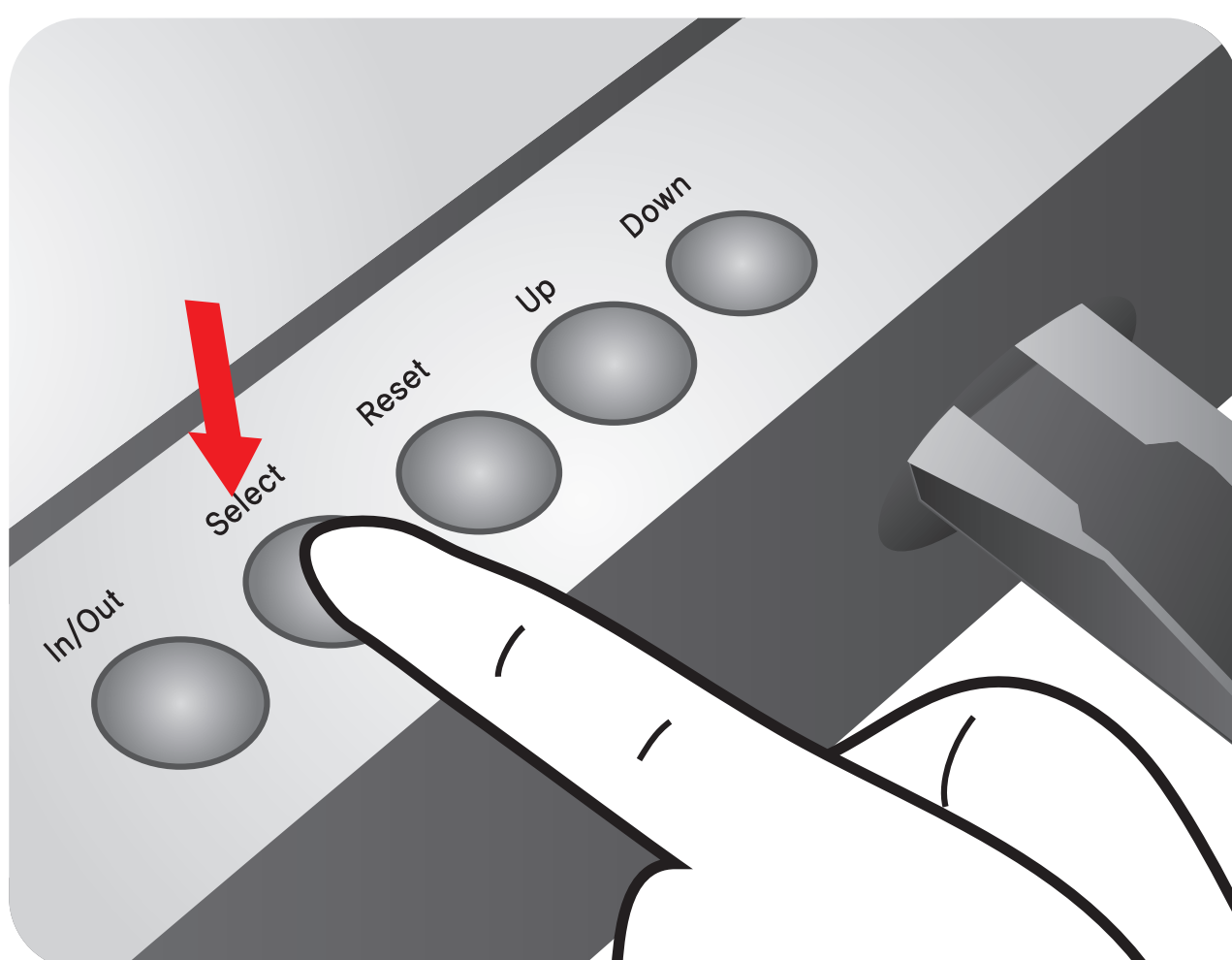
1 Turn the power switch 'On'



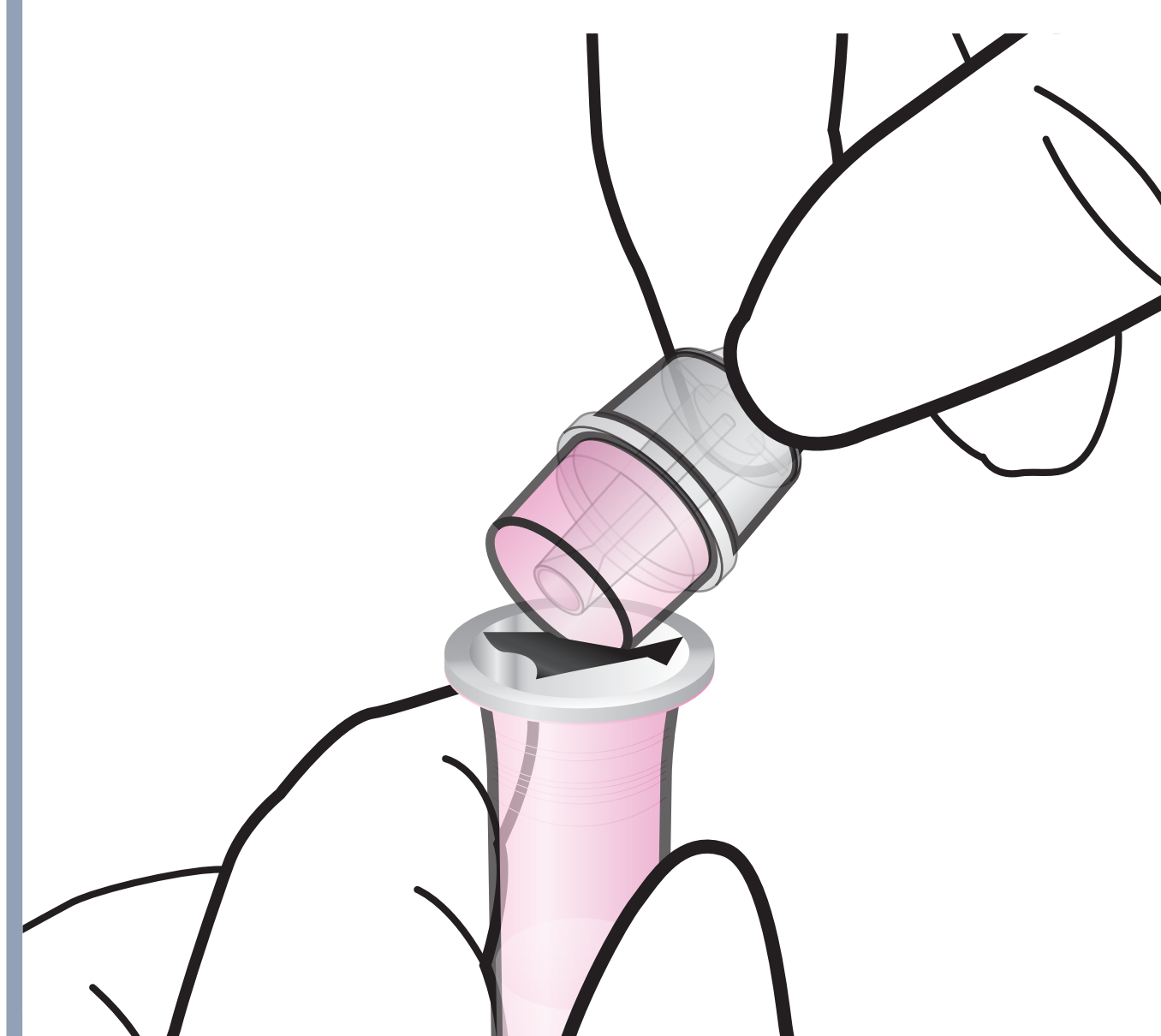
2 Insert ID Chip



3 Press 'Select'

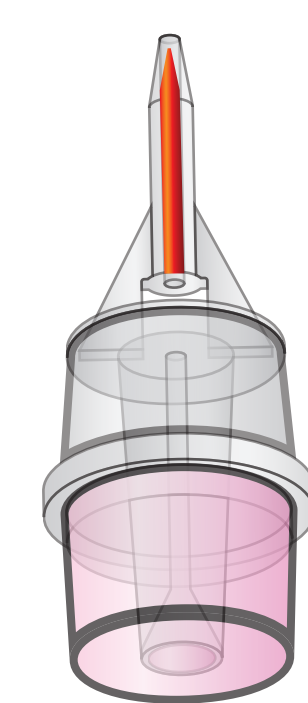
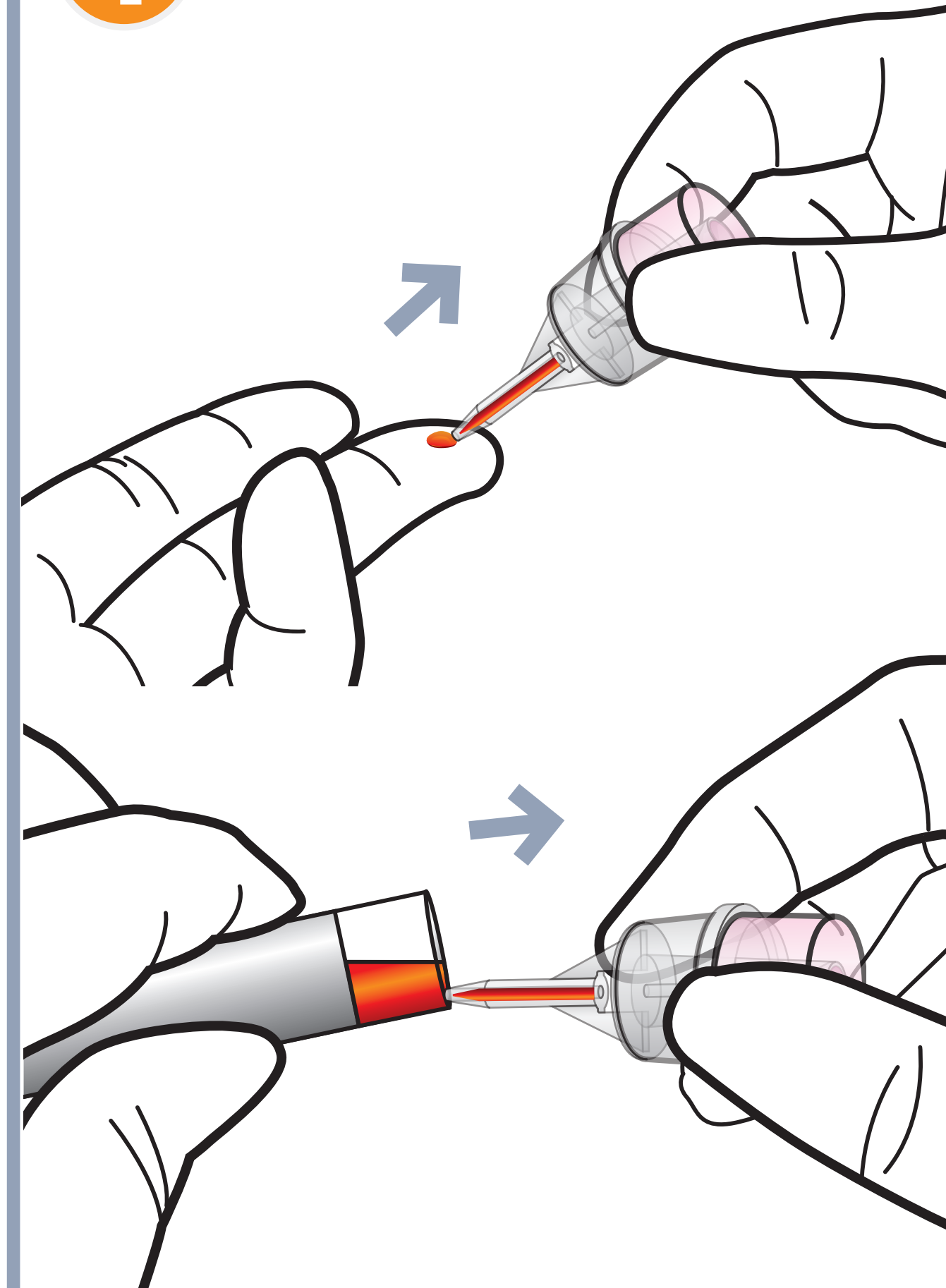


4 Make a Puncture

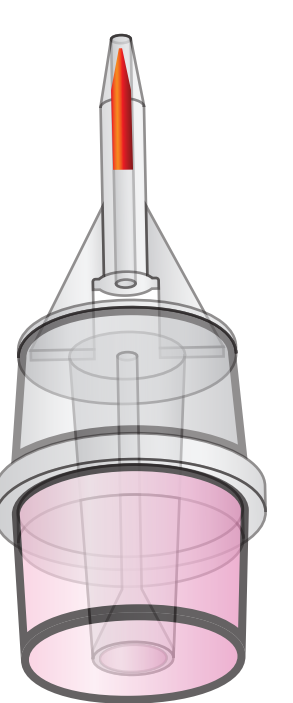


Test Procedure

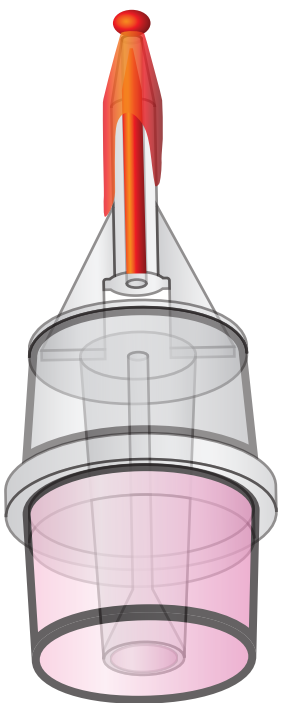
1 Draw whole blood



Just right



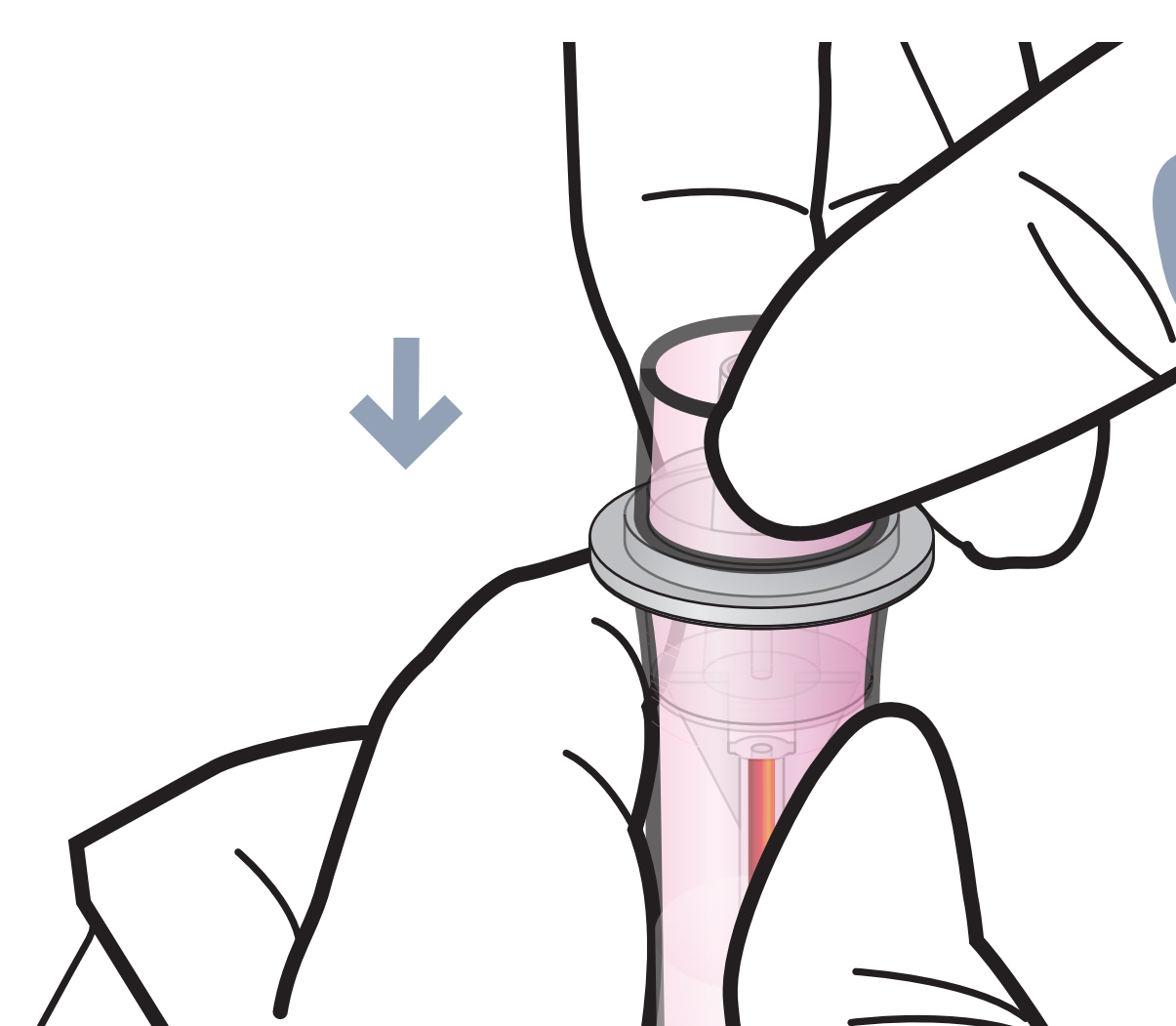
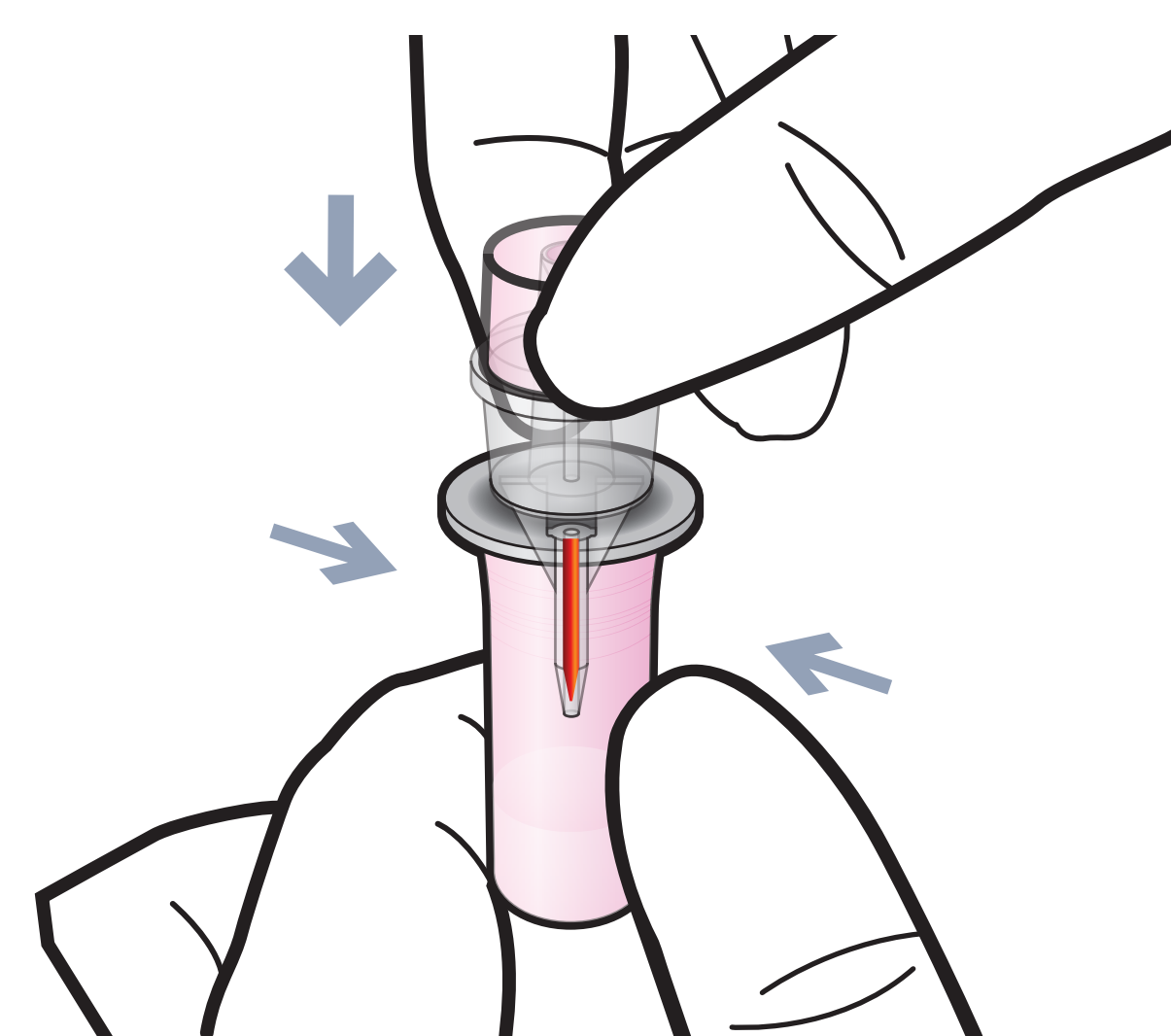
Too little



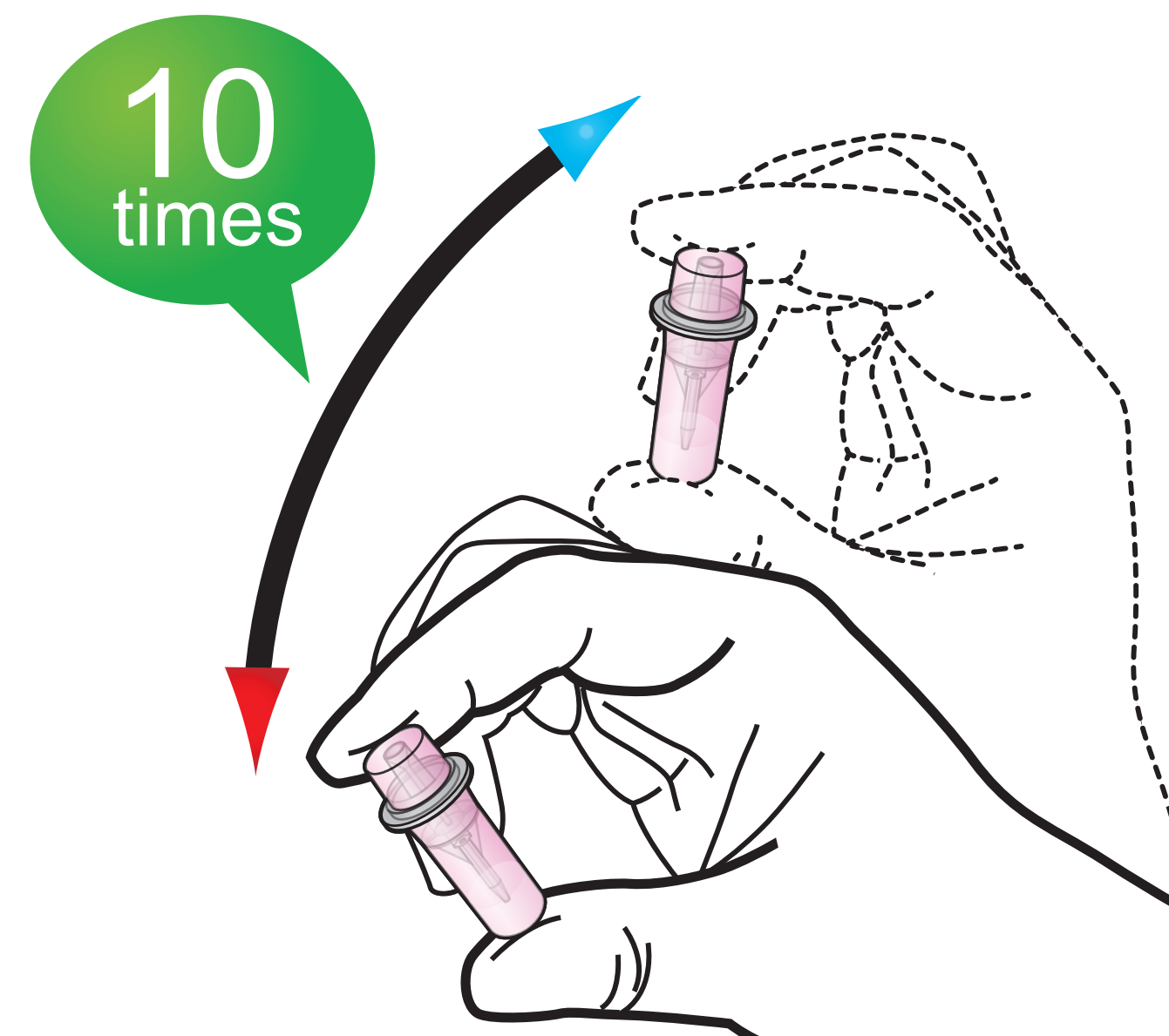
Too much

Add more blood Wipe away excess

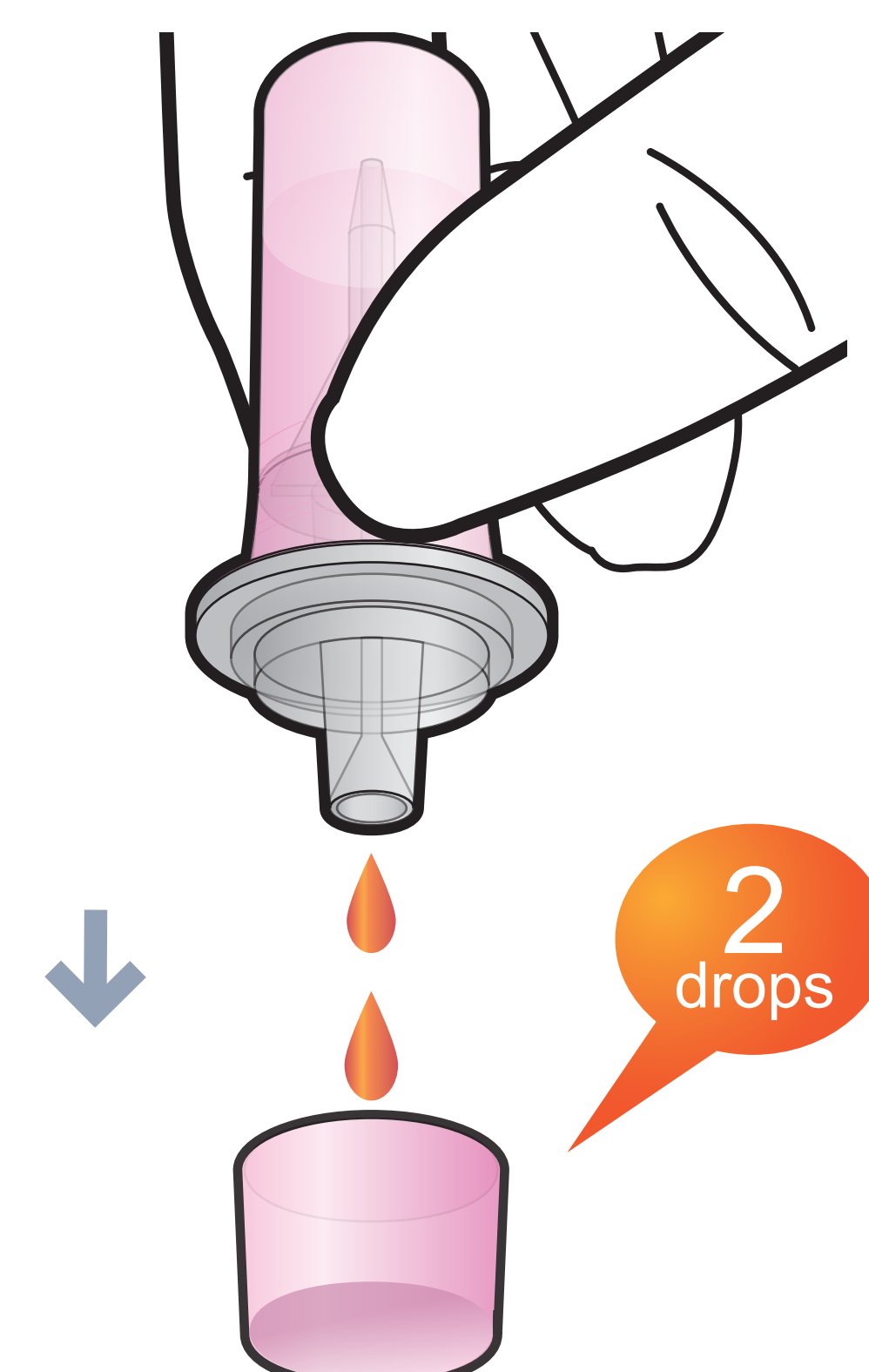
2 Assemble the sample collector with detection buffer tube



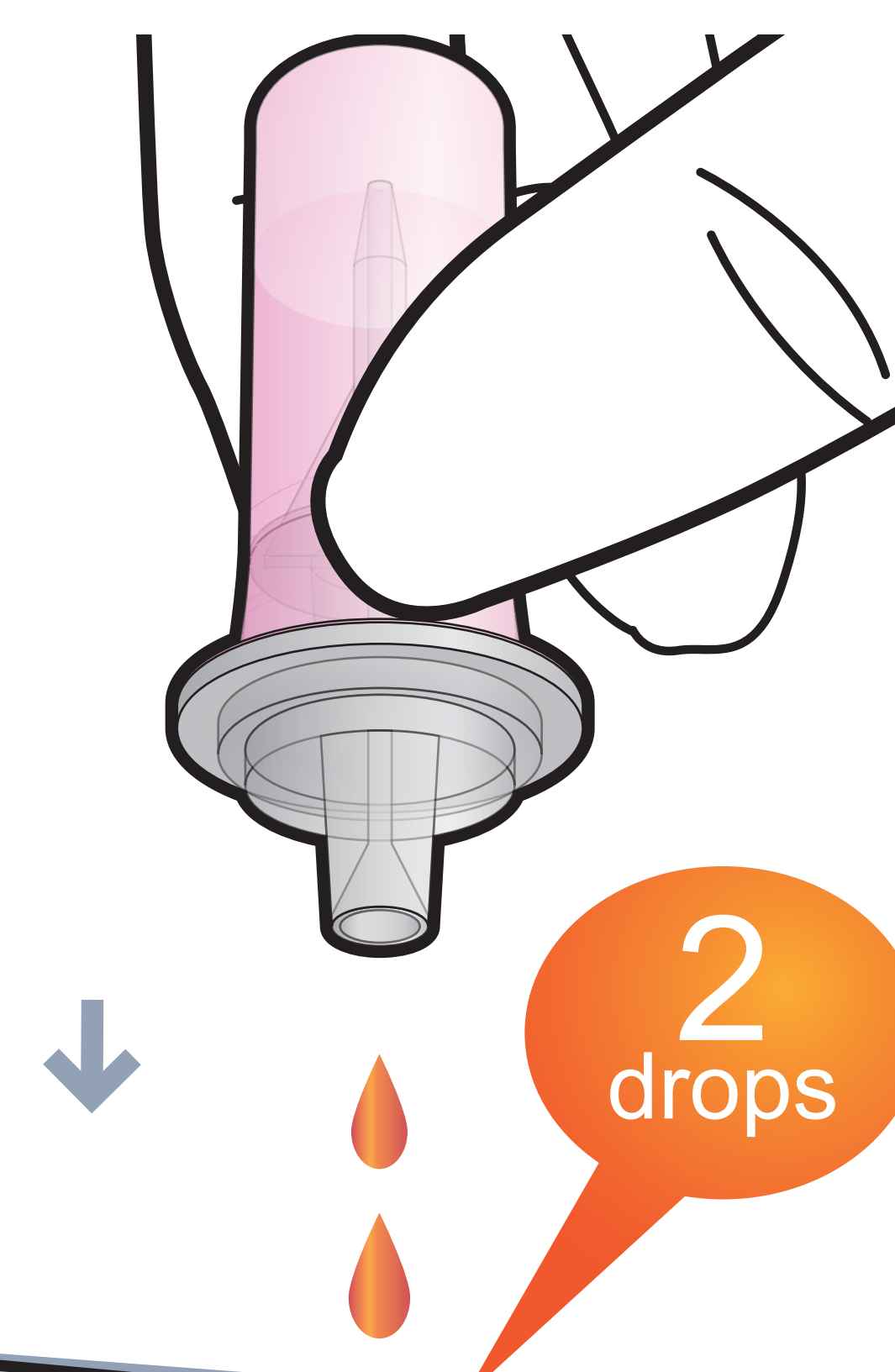
3 Shake the tube



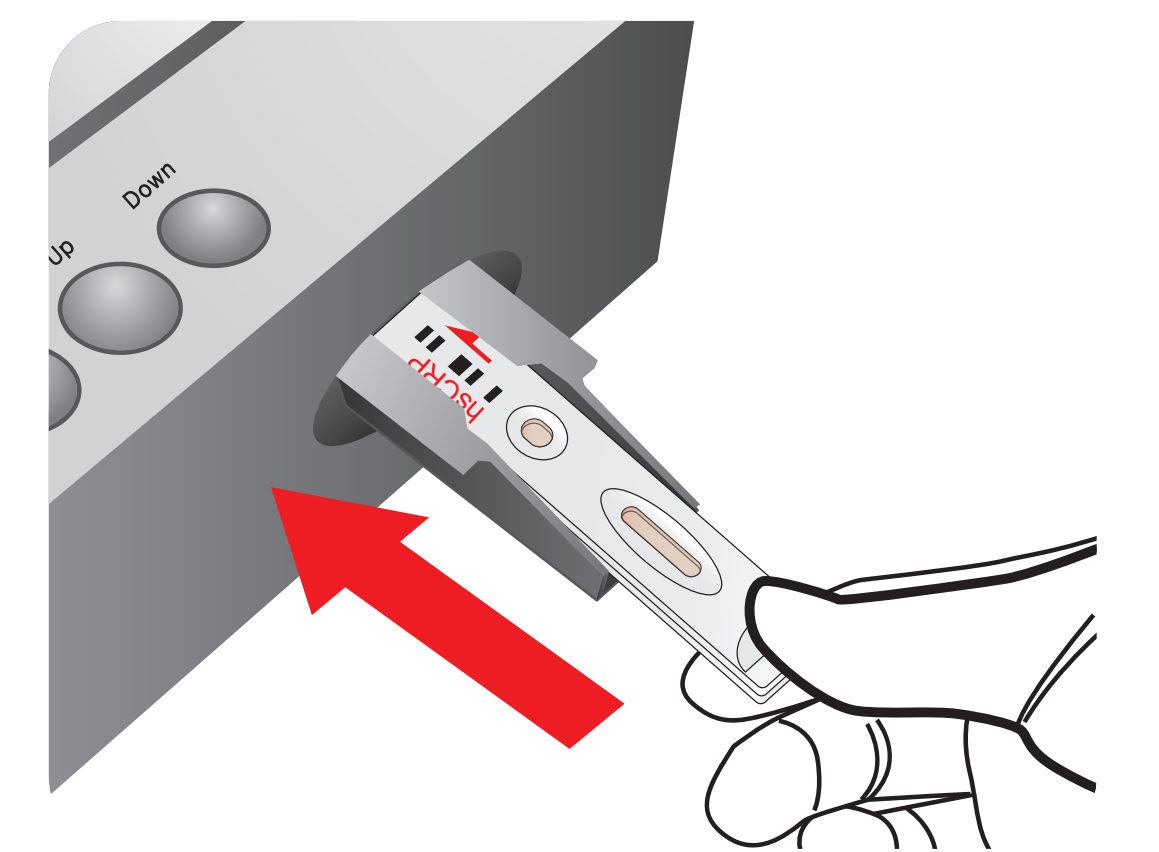
4 Discard two drops



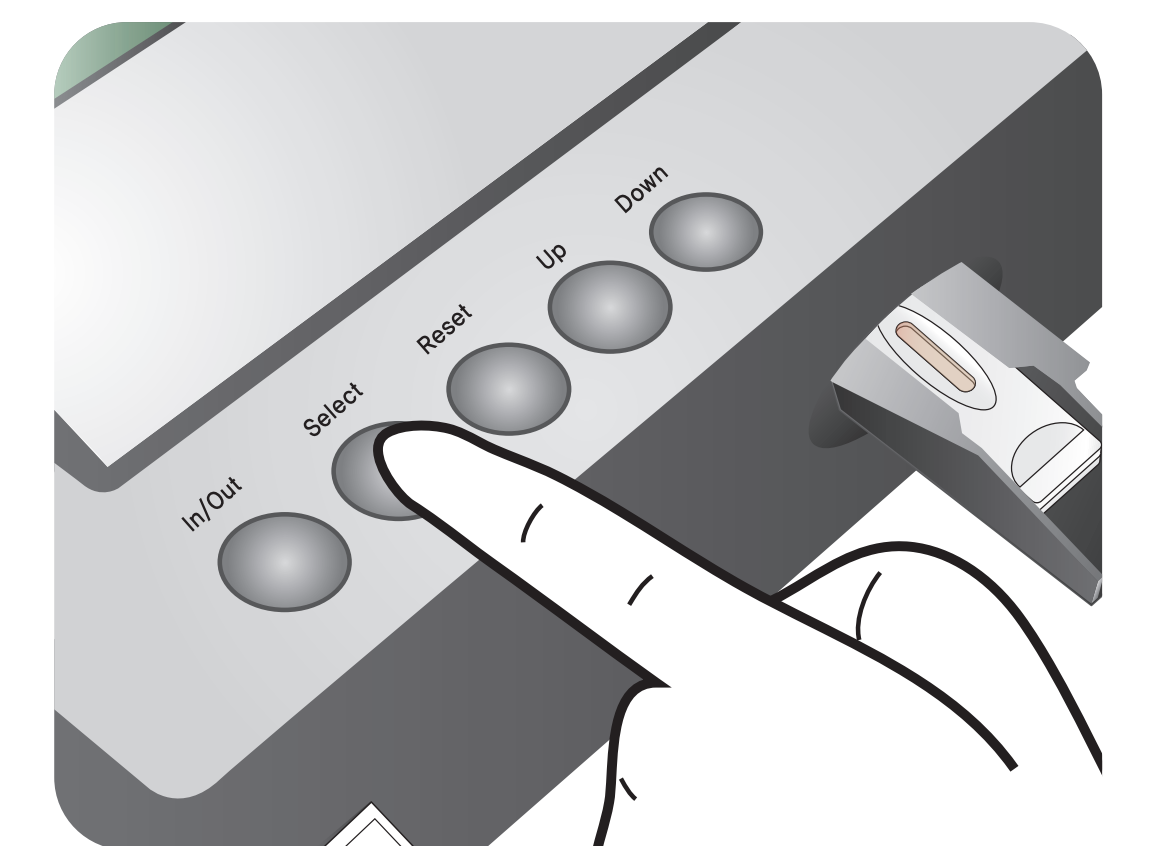
5 Load the sample mixture



6 Insert the test cartridge



7 Press 'Select'



After 3 minutes

8 Read the test result

