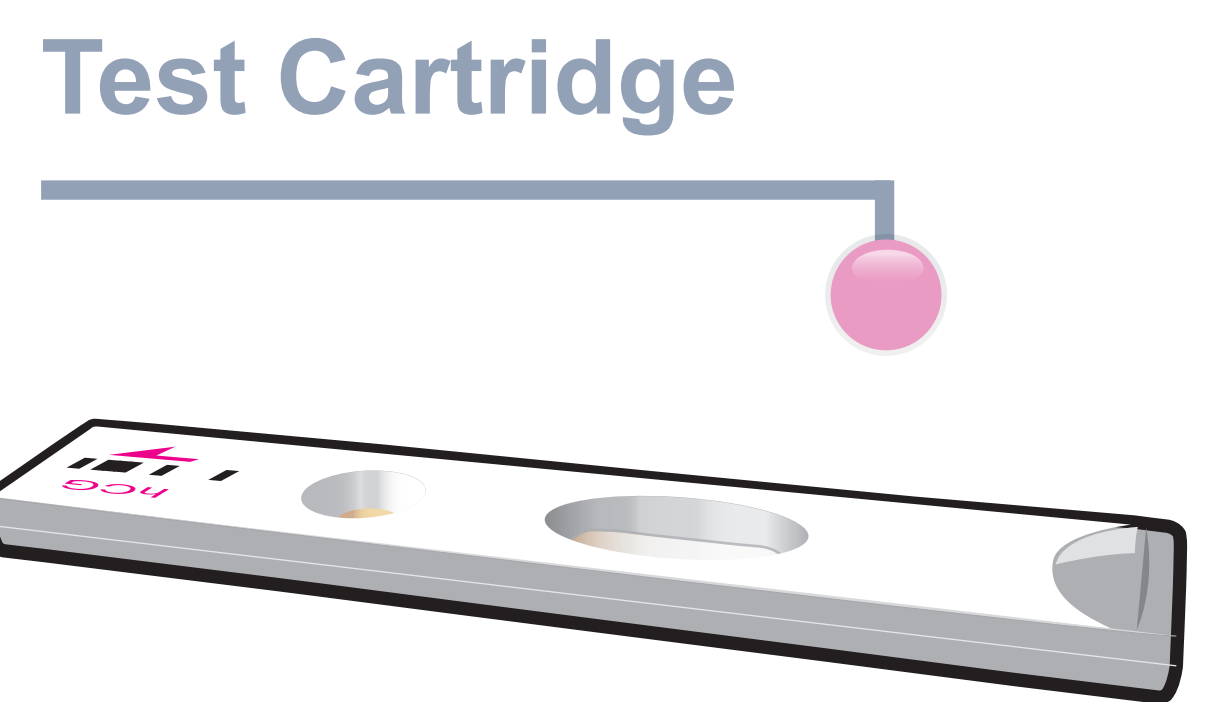
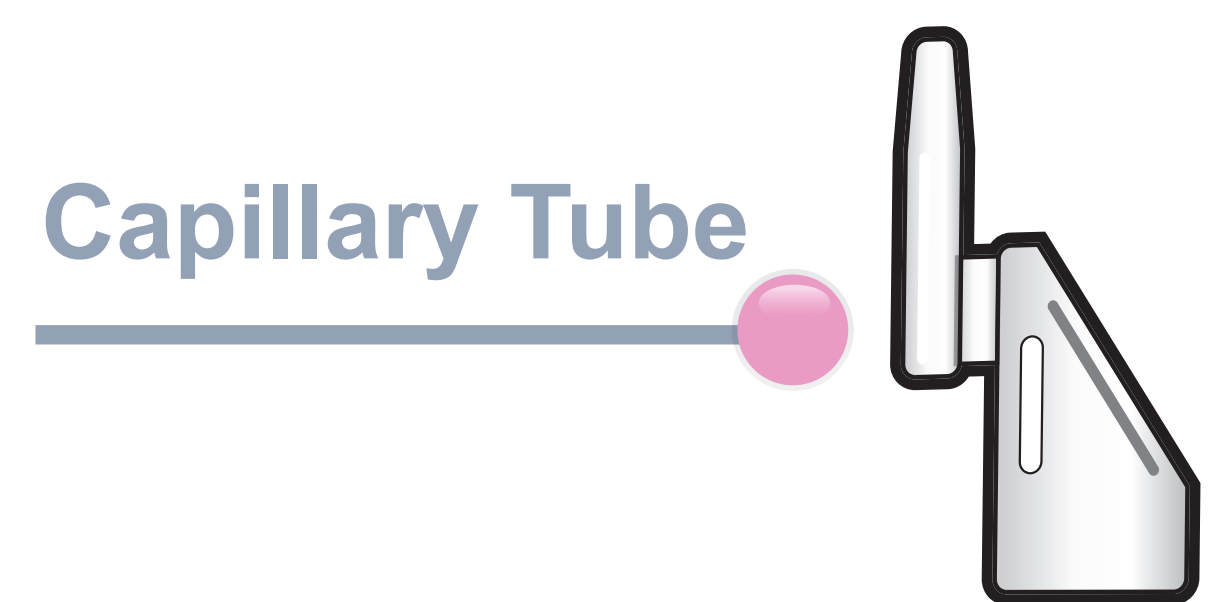
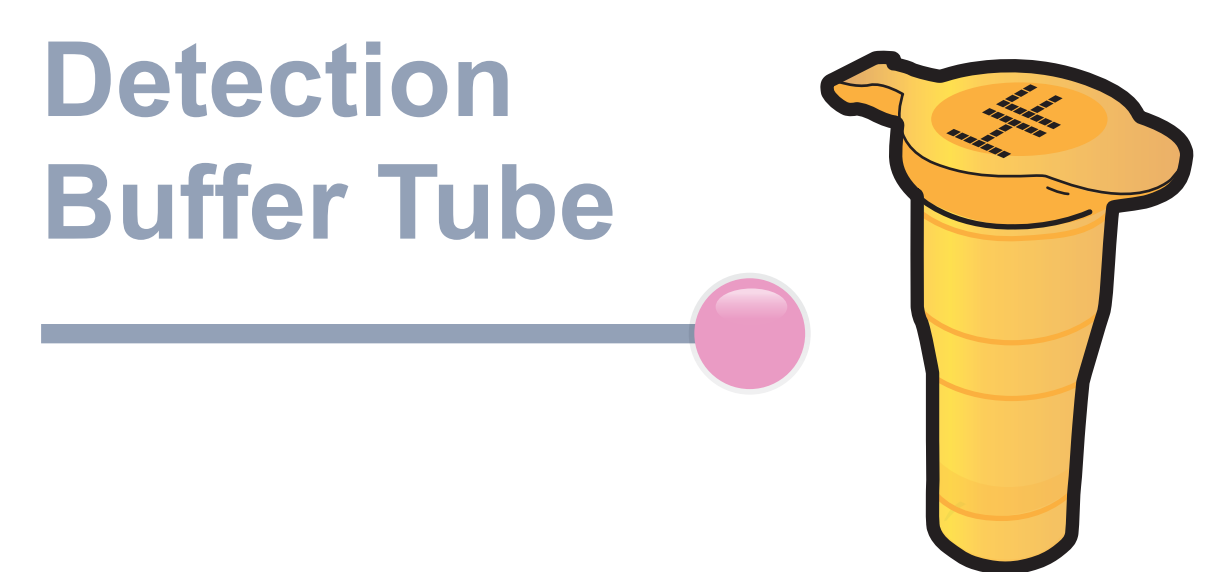
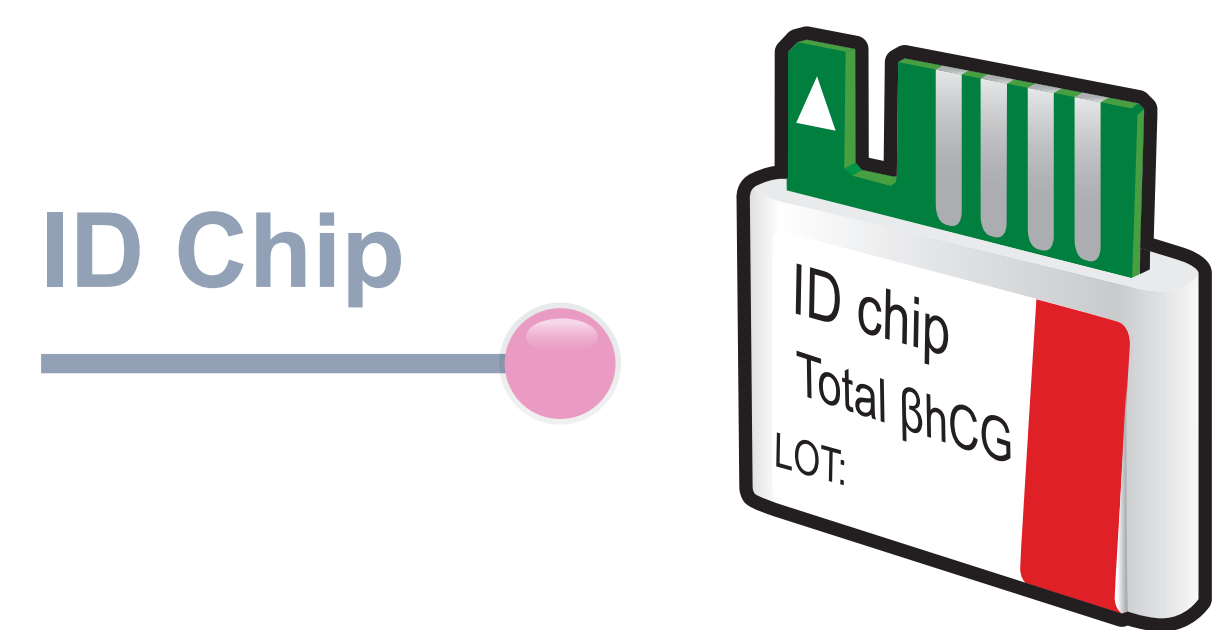


ichromα™ Total βhCG

Test Setup

Test Components



ichromα™ Reader

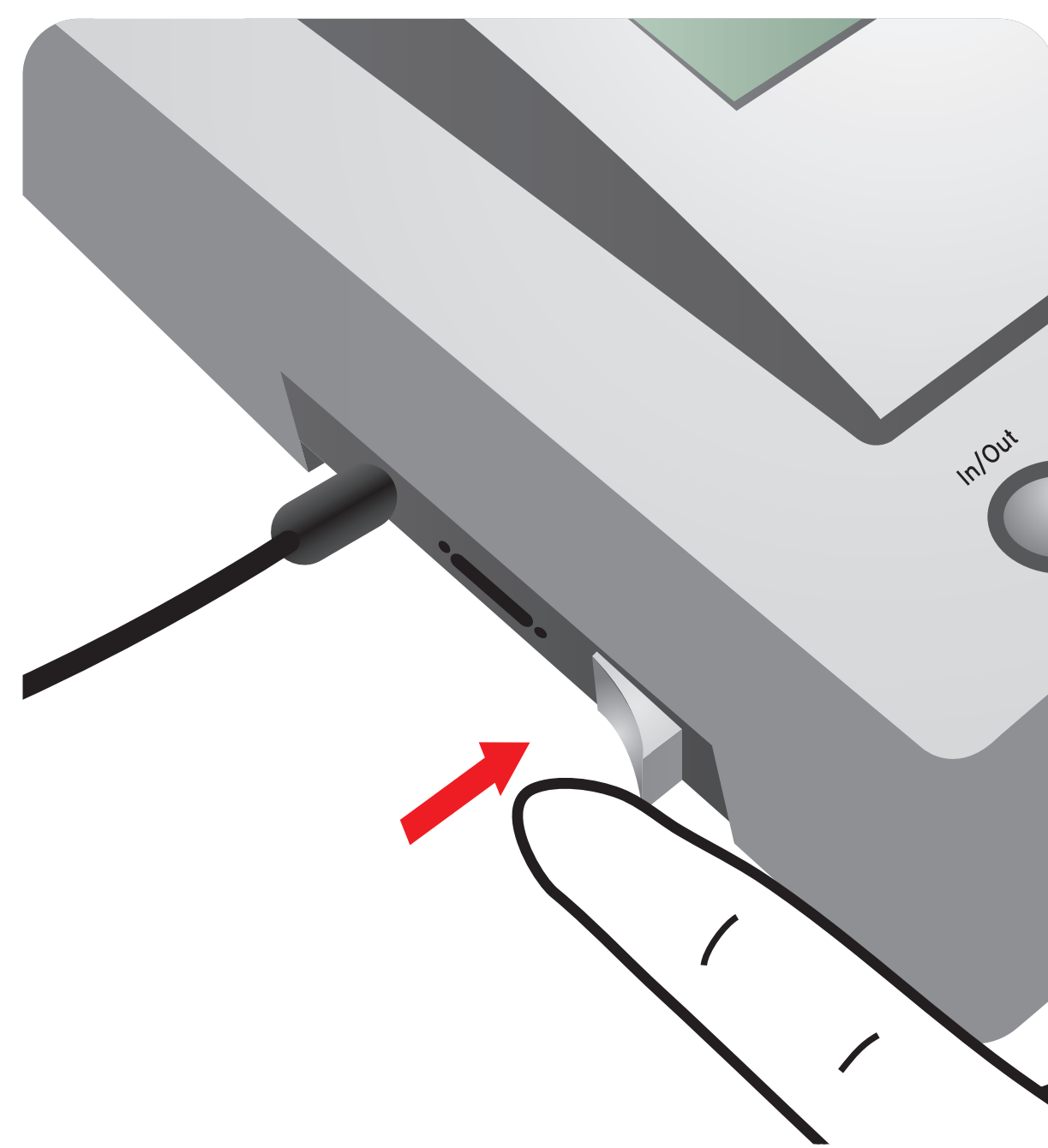


Important

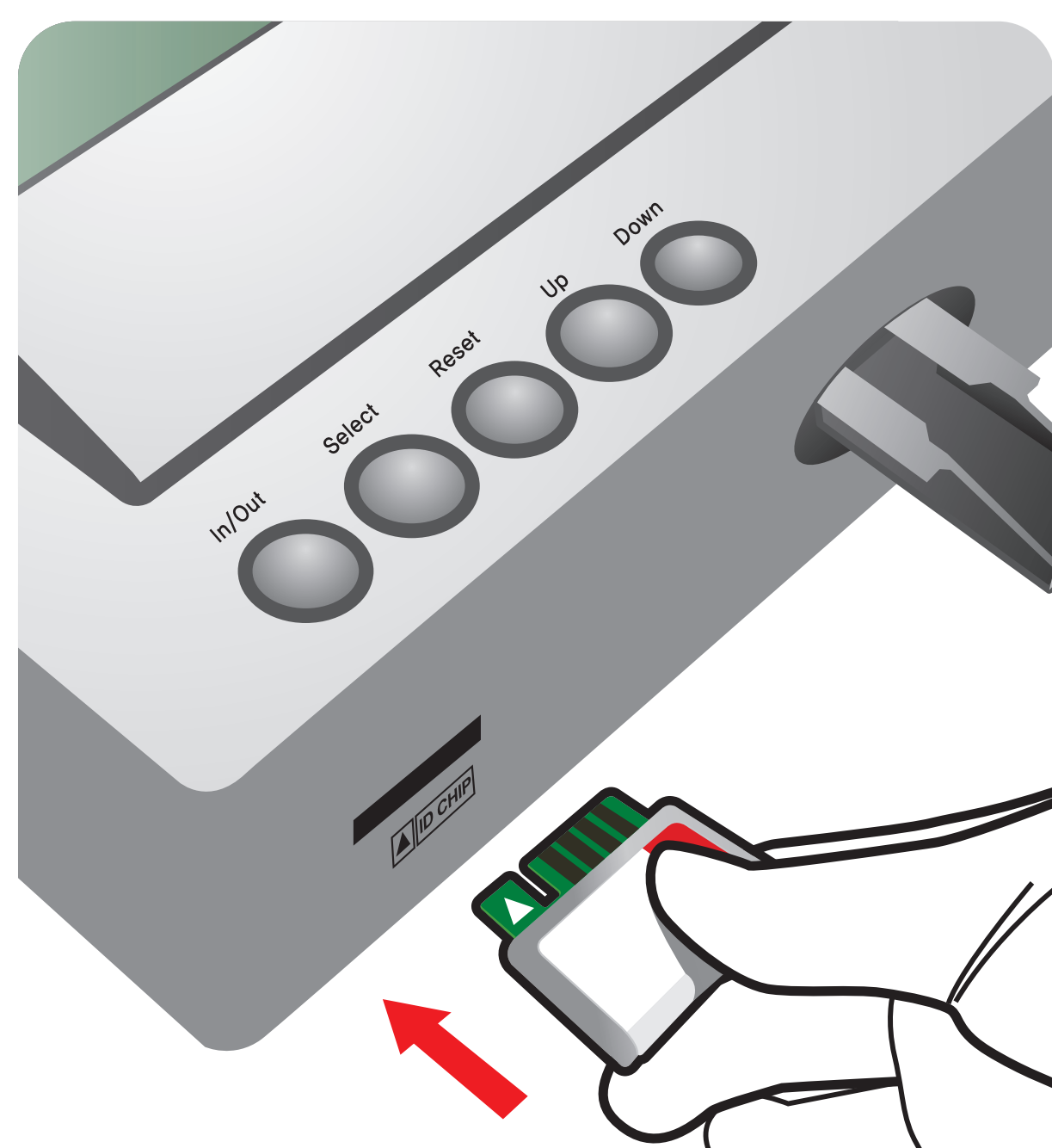
Allow 'Detection Buffer Tube' to attain room temperature at least for 30 minutes before performing the test

Make sure that lot number of the 'ID Chip' is exactly same as the lot number of 'Test Cartridge' and 'Detection Buffer Tube'

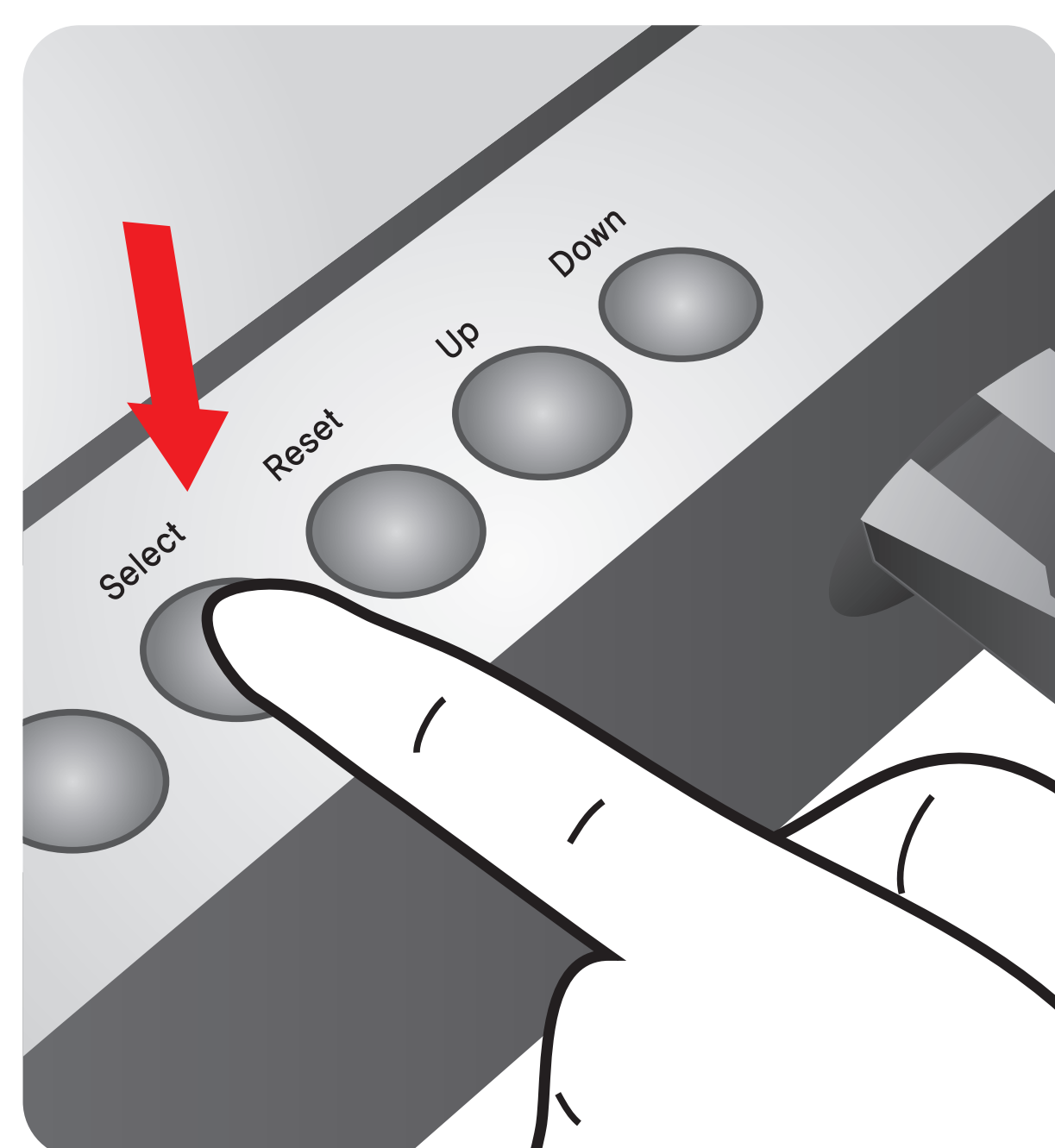
1 Turn the power switch 'On'



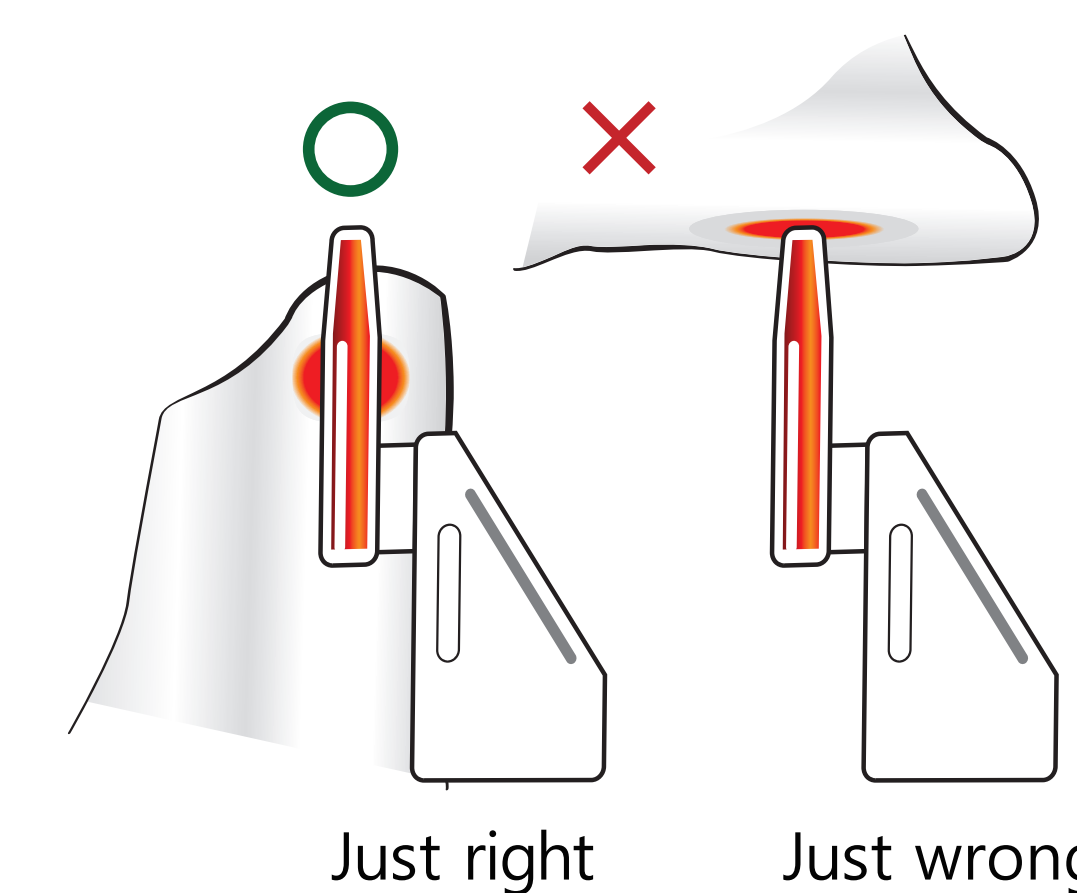
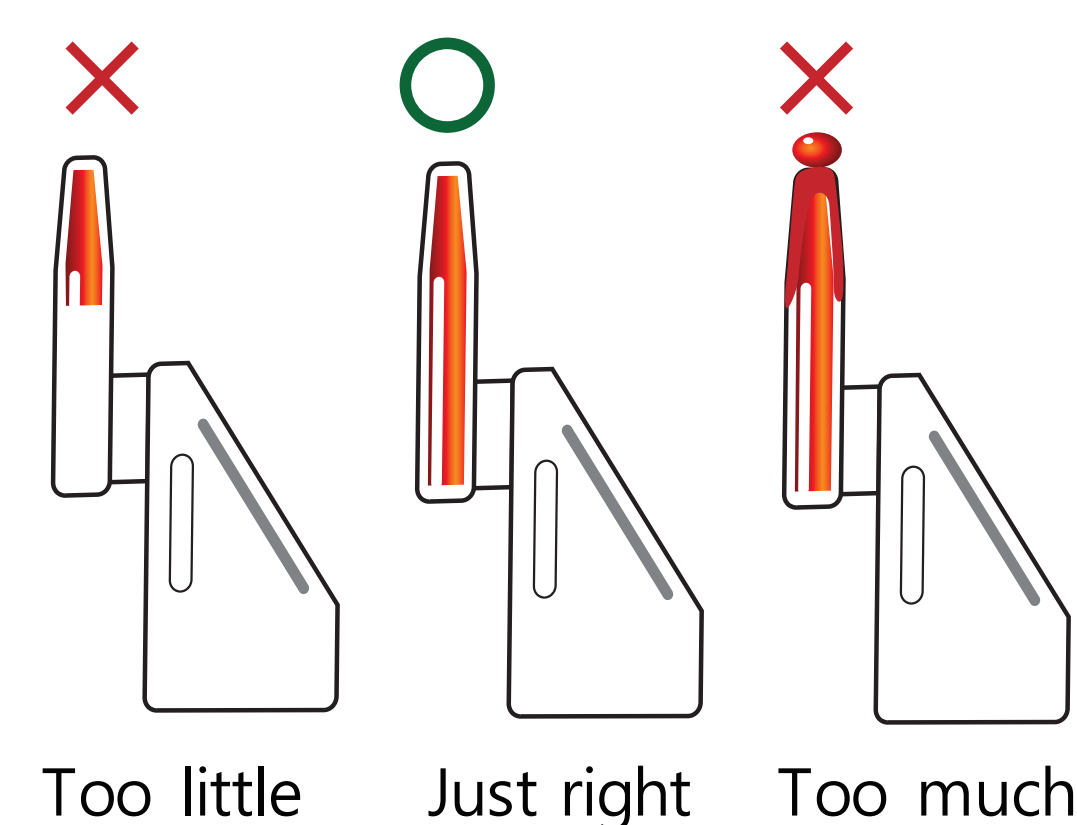
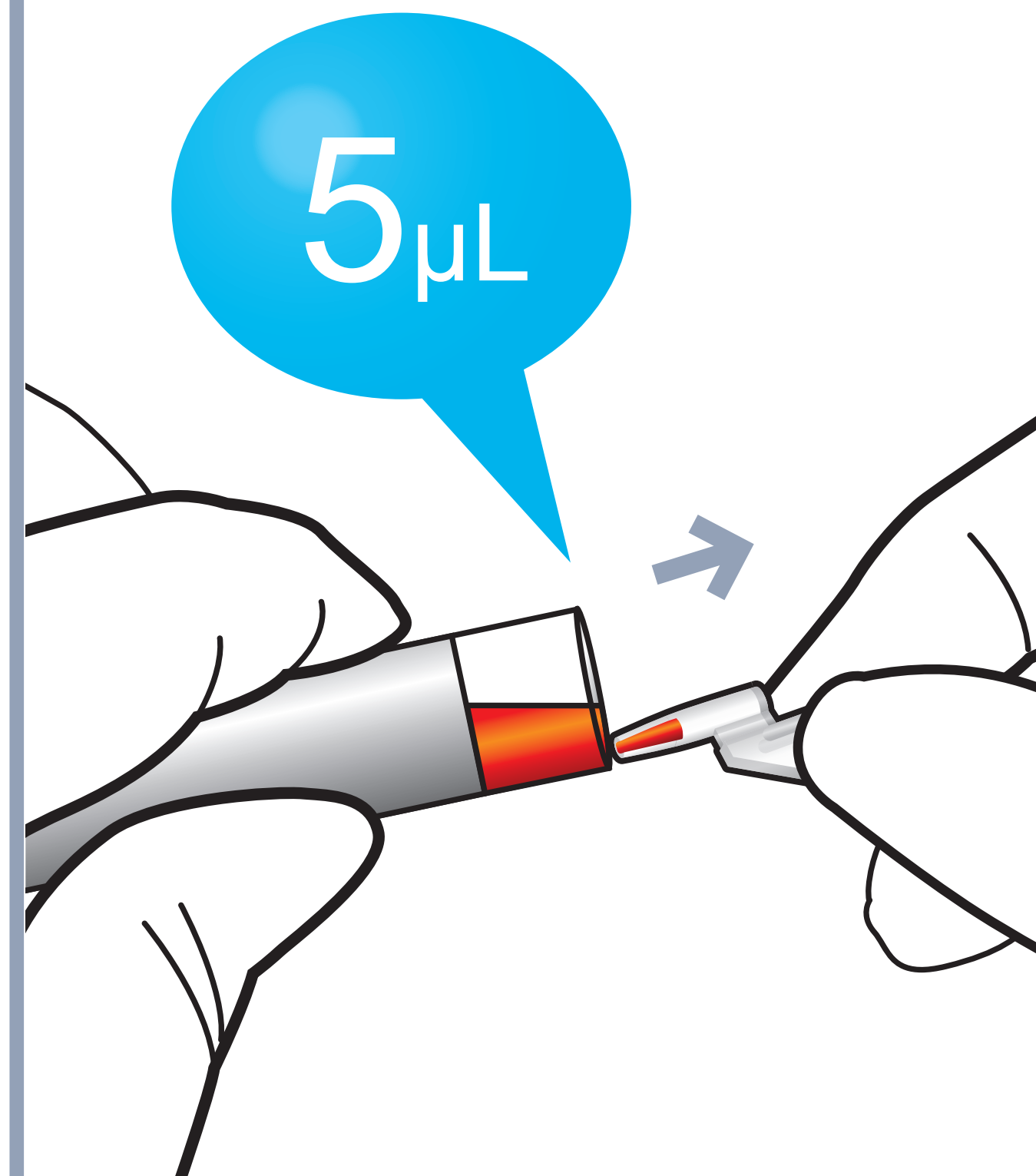
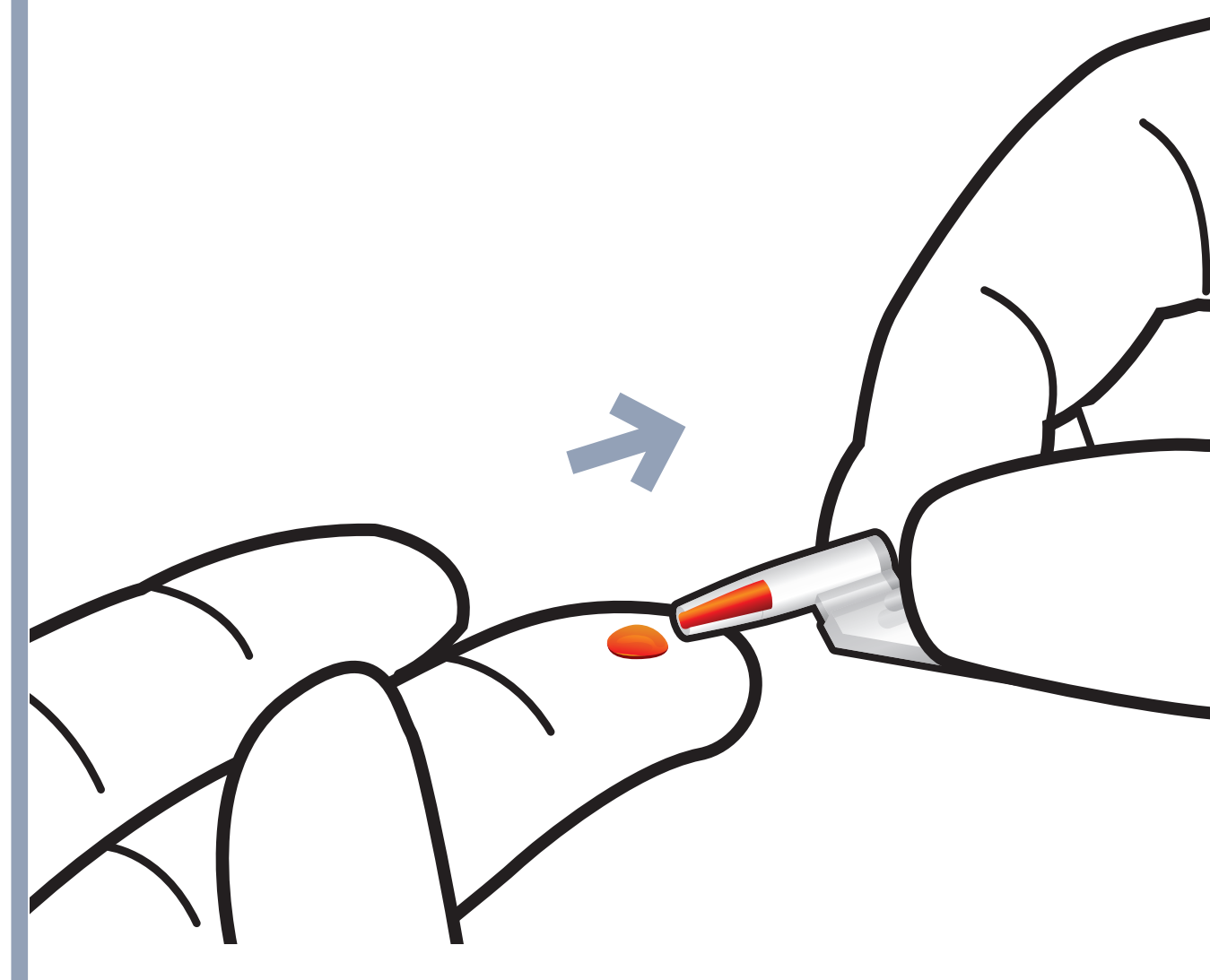
2 Insert ID Chip



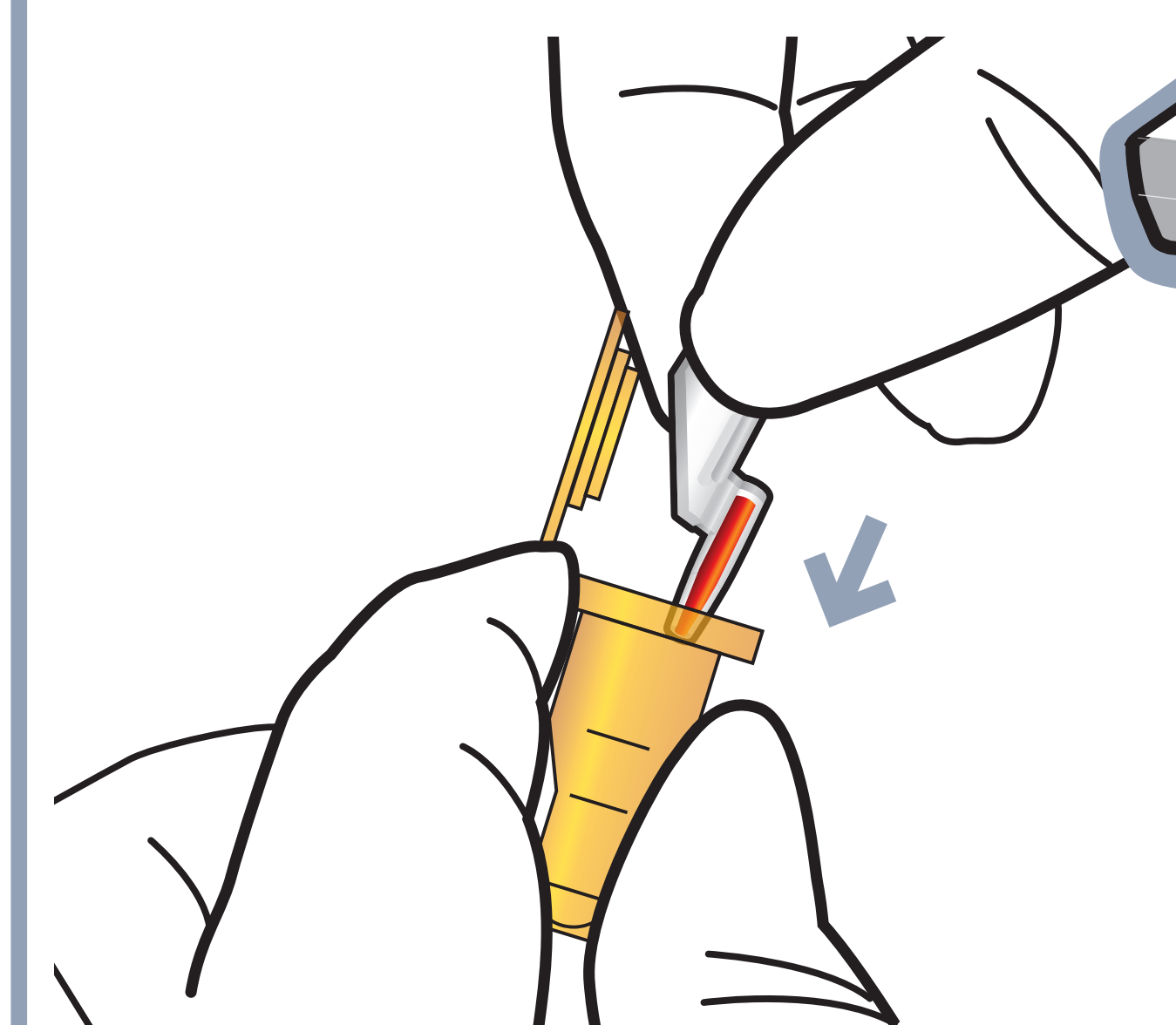
3 Press 'Select'



1 Draw Serum / Plasma

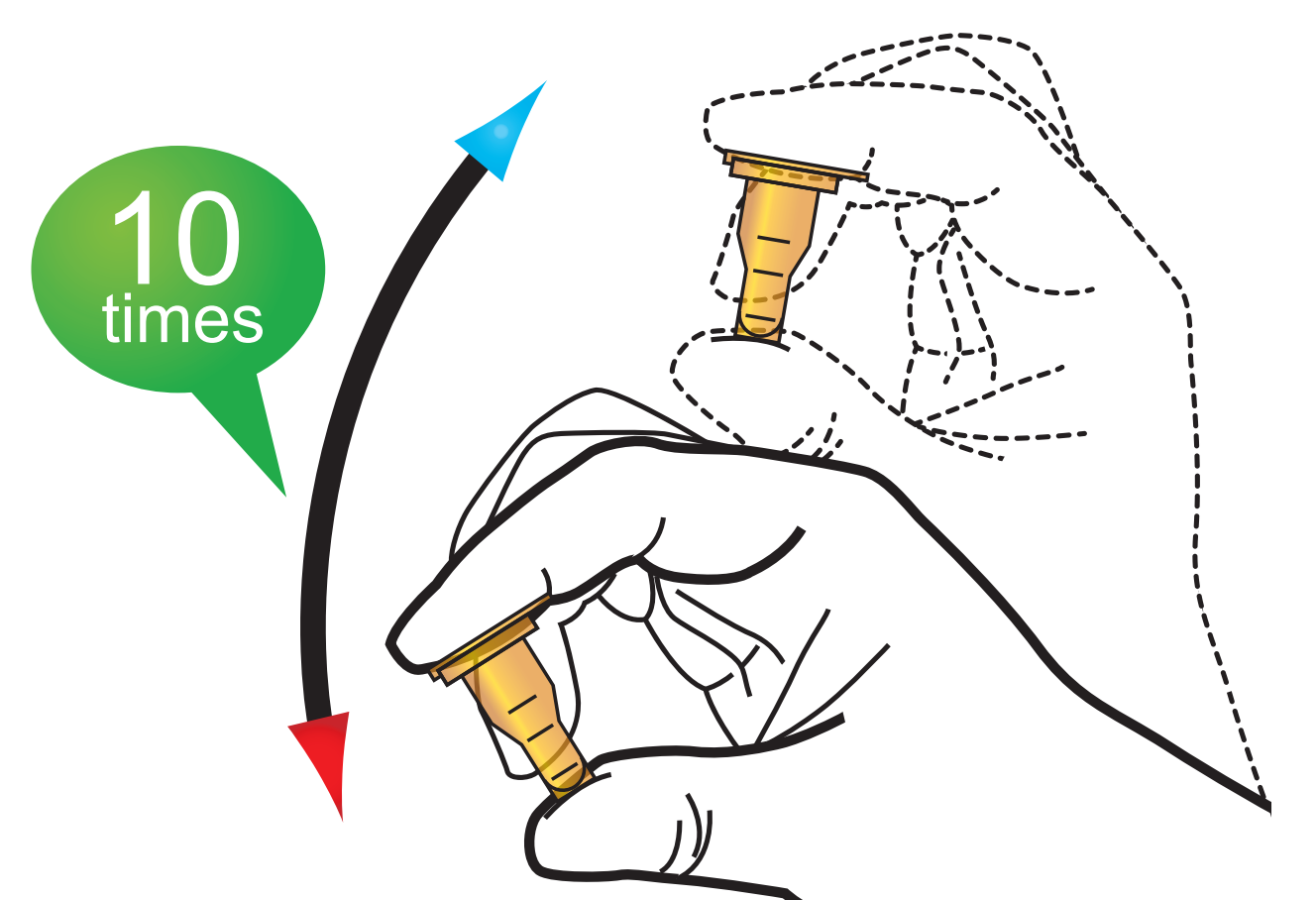


2 Put the capillary

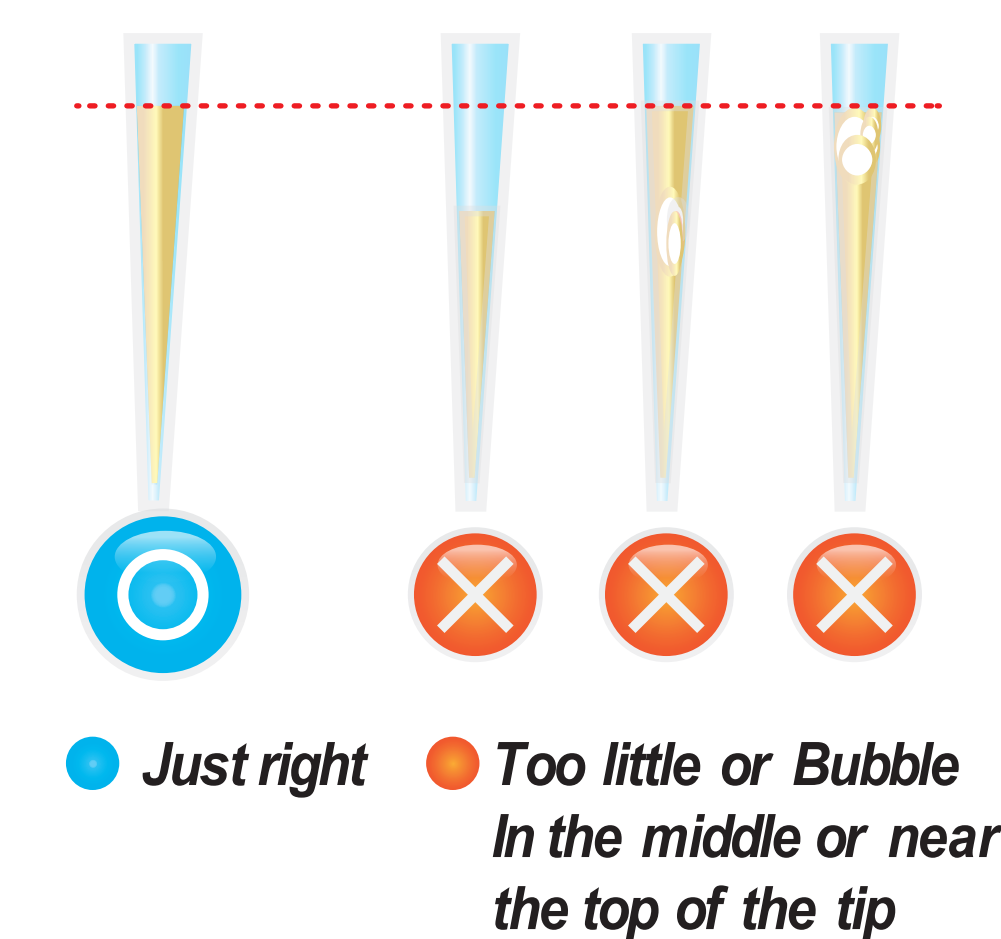
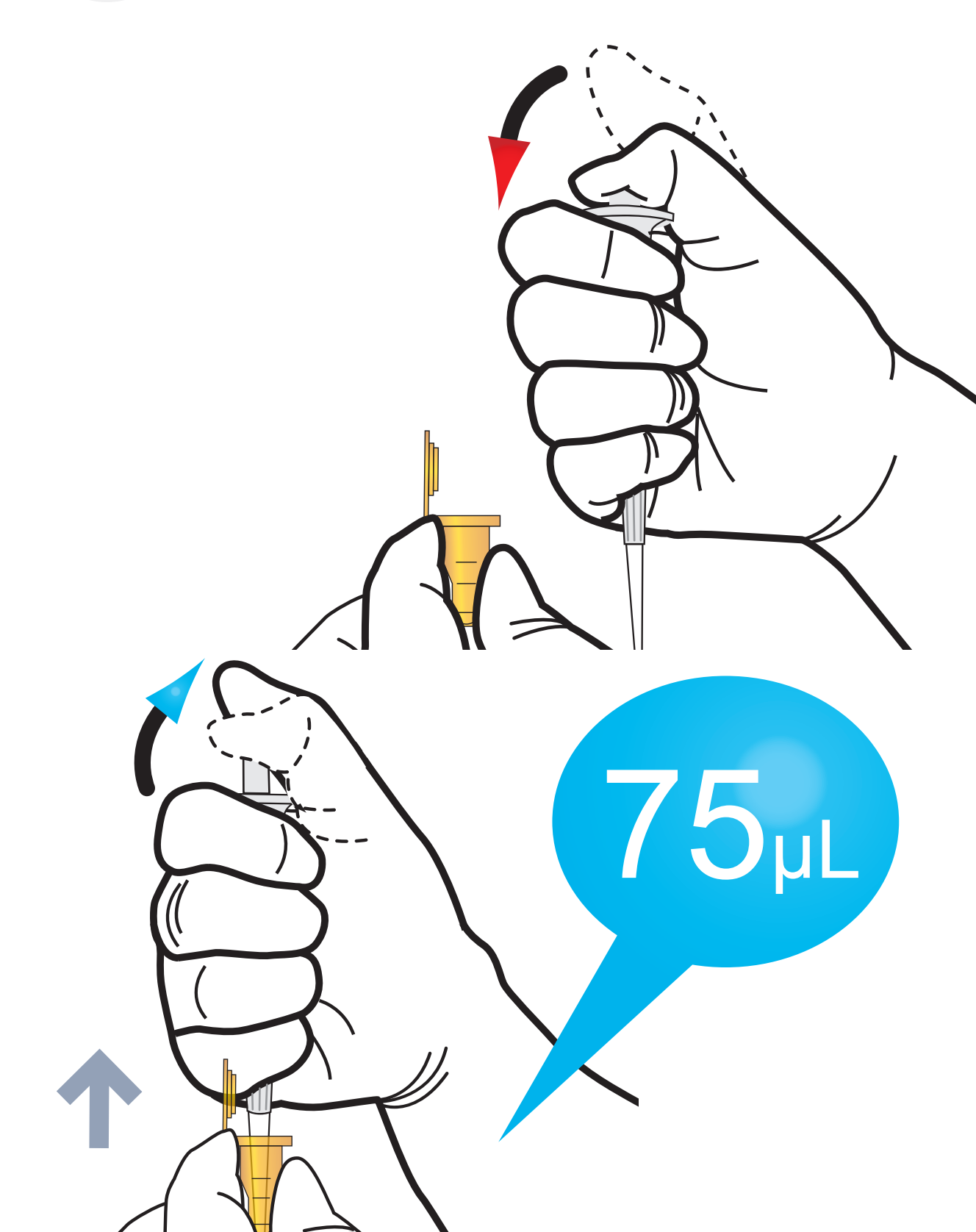


Test Procedure

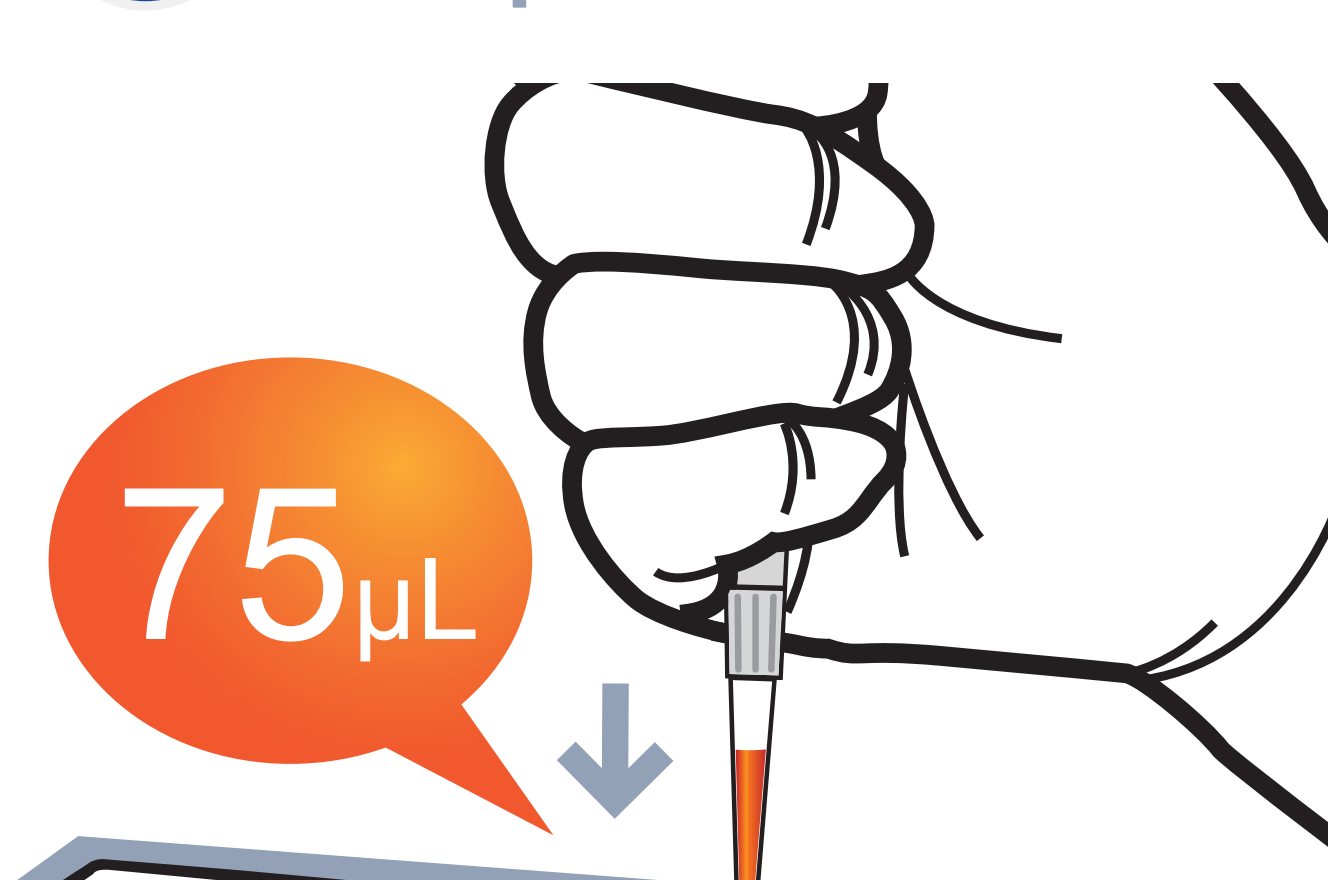
3 Shake the detection buffer tube



4 Draw the detection buffer tube



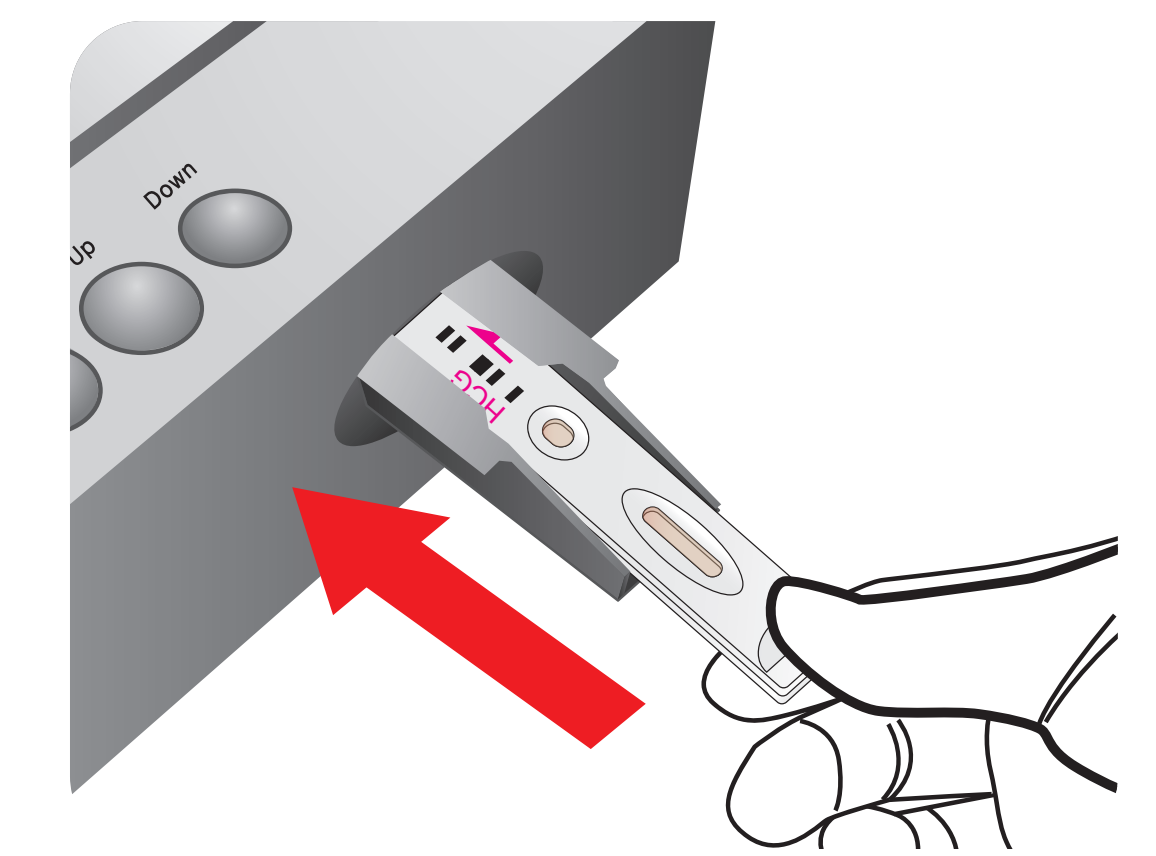
5 Load the sample mixture



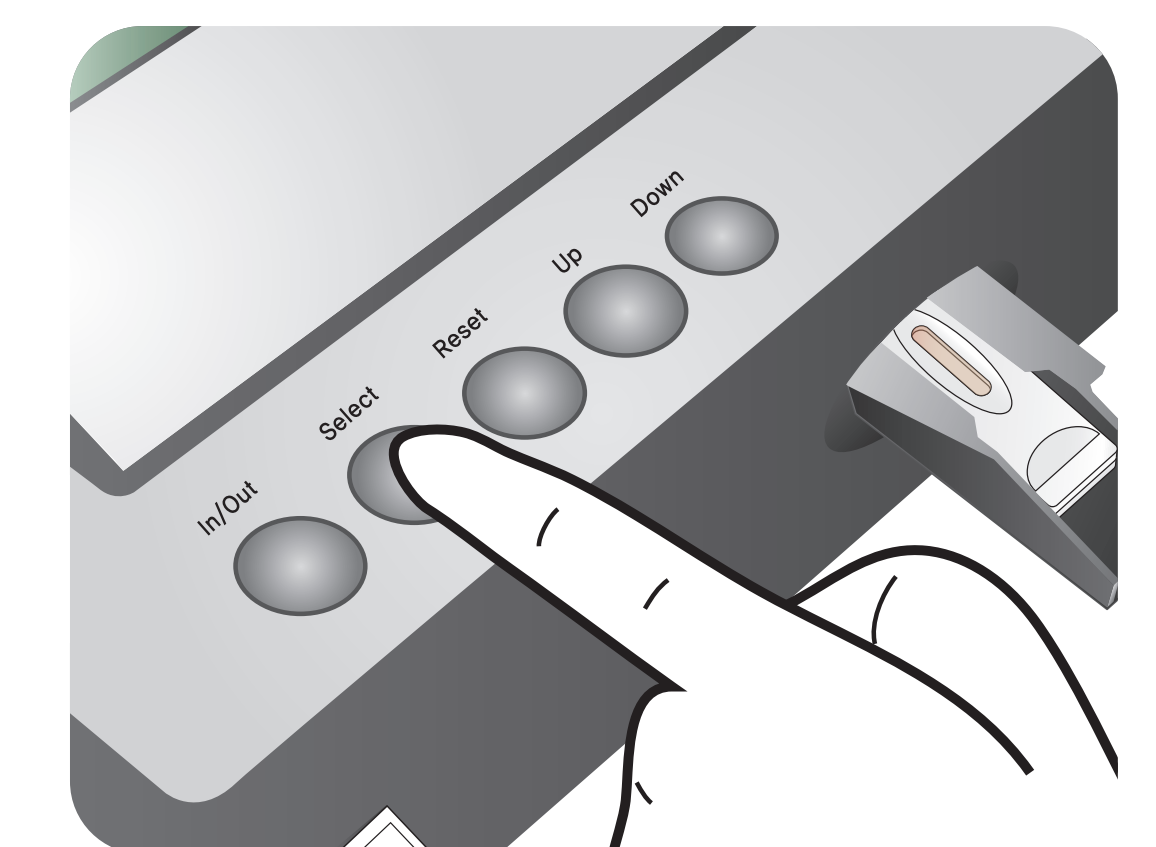
6 Waiting 15 minutes



7 Insert the test cartridge



8 Press 'Select'



9 Read the test result

