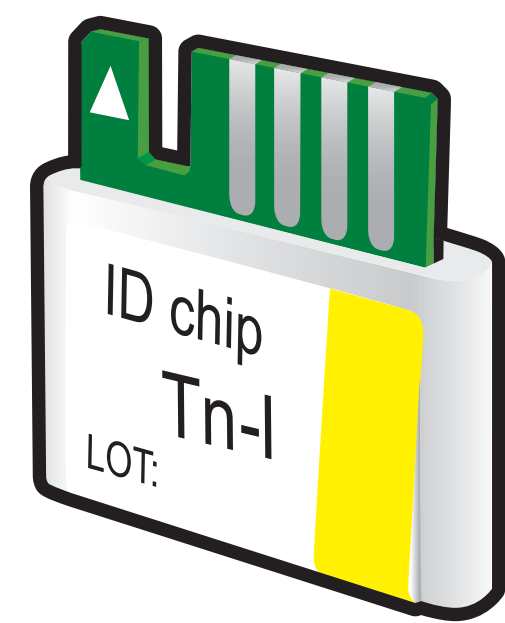


ichromα™ Tn-I

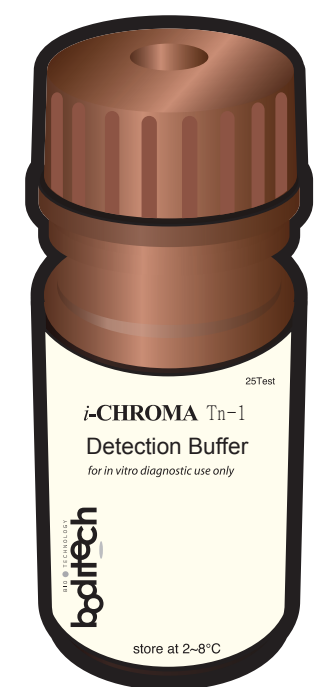
Test Setup

Test Components

ID Chip



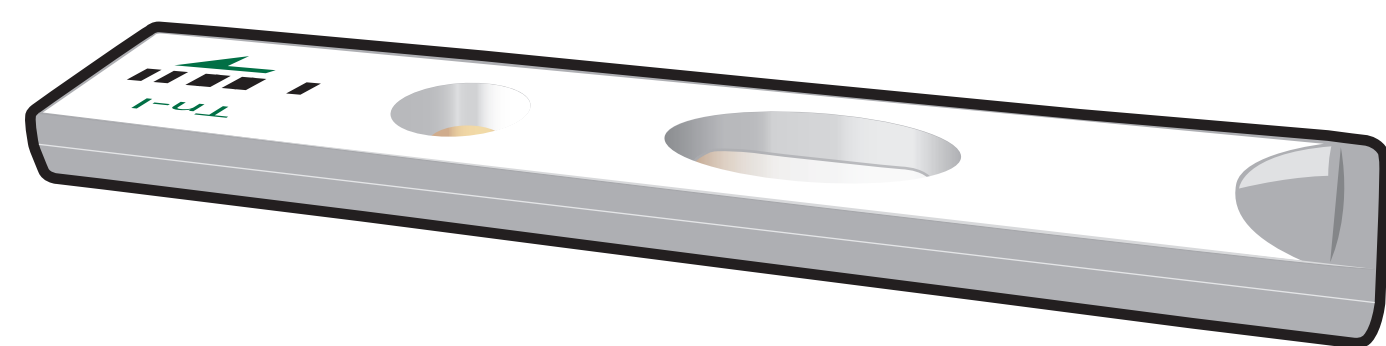
Detection Buffer Vial



Sample Mixing Tube



Test Cartridge



ichromα™ Reader

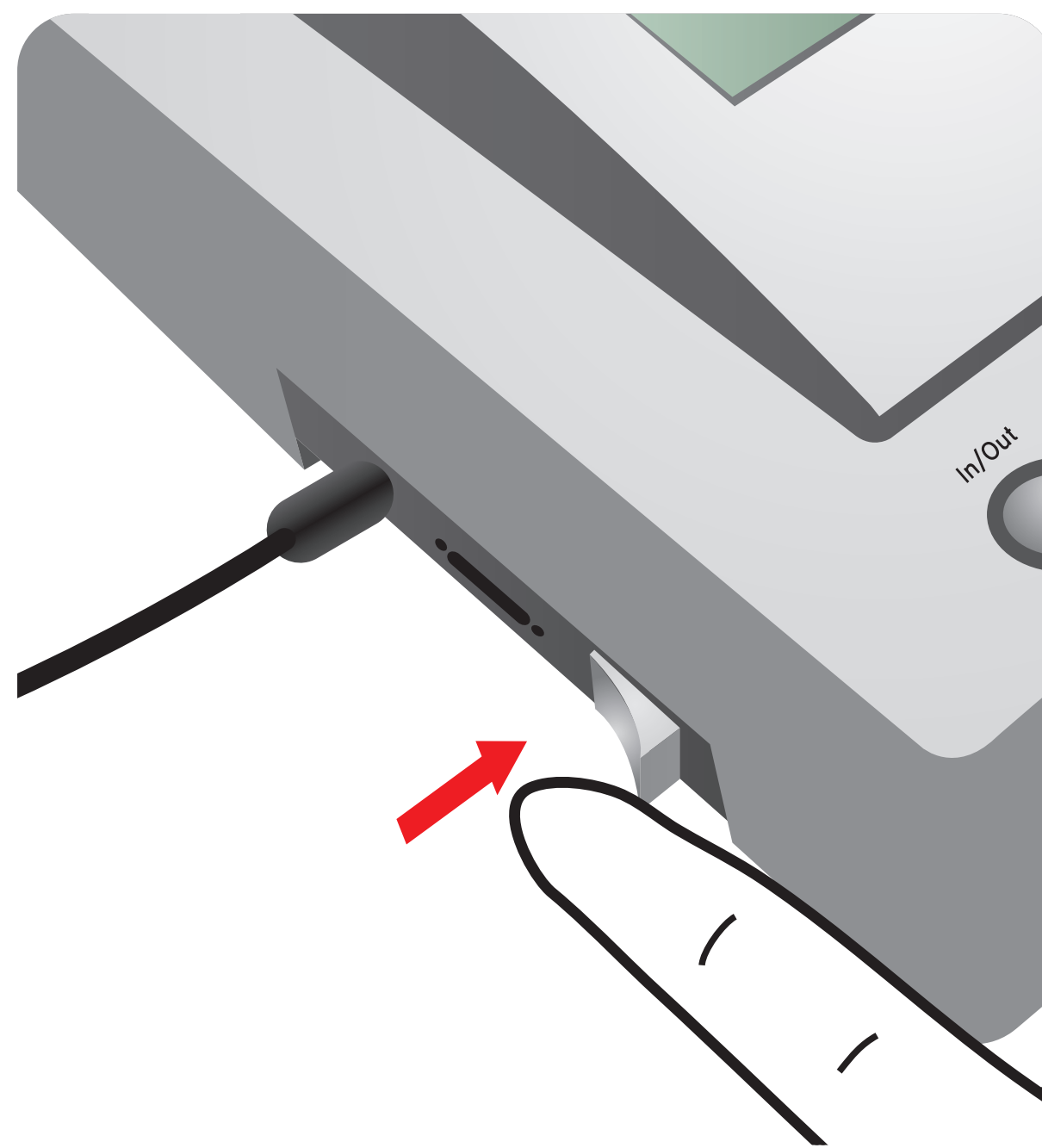


Important

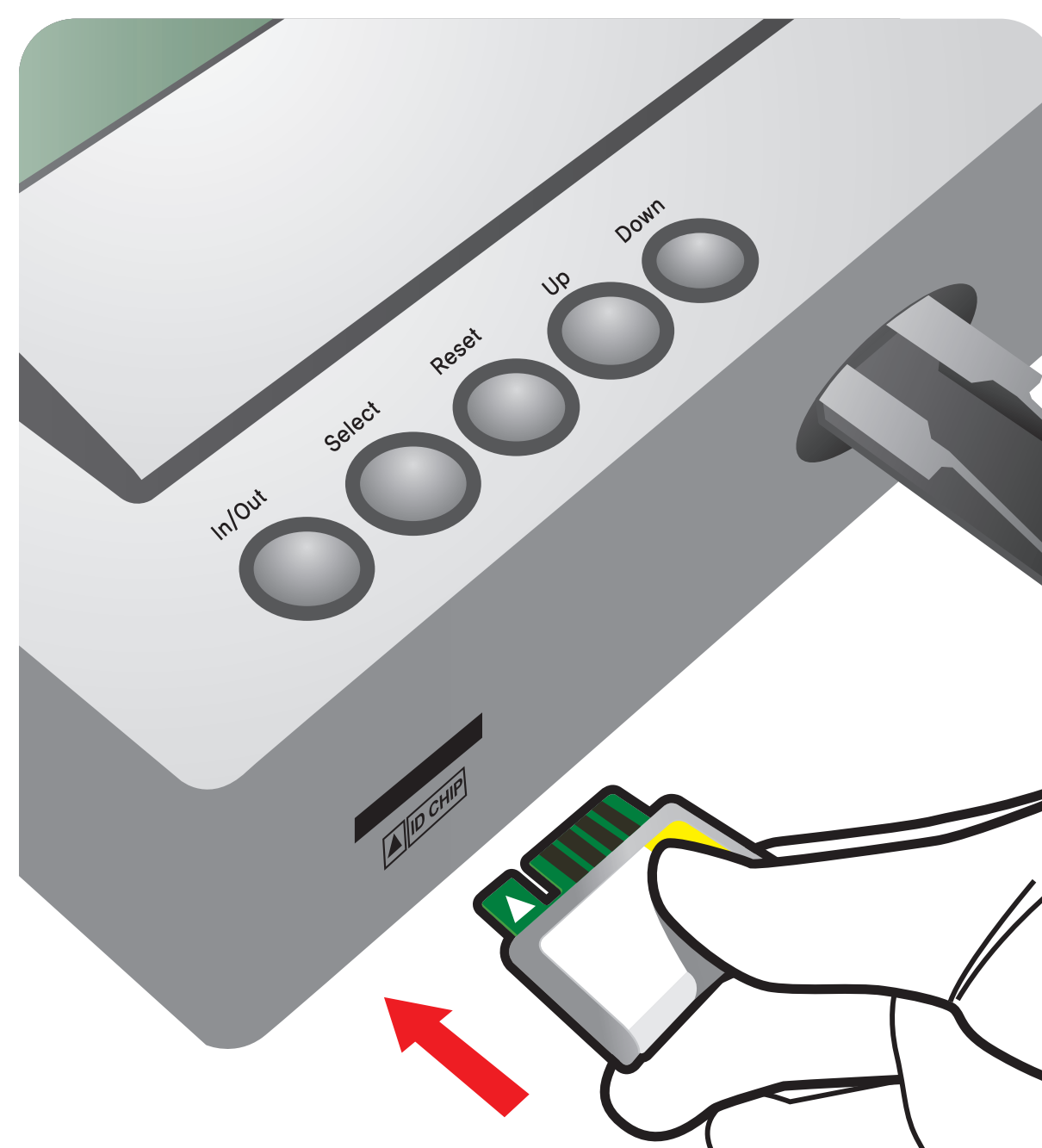
Allow 'Detection Buffer Tube' to attain room temperature at least for 30 minutes before performing the test

Make sure that lot number of the 'ID Chip' is exactly same as the lot number of 'Test Cartridge' and 'Detection Buffer Tube'

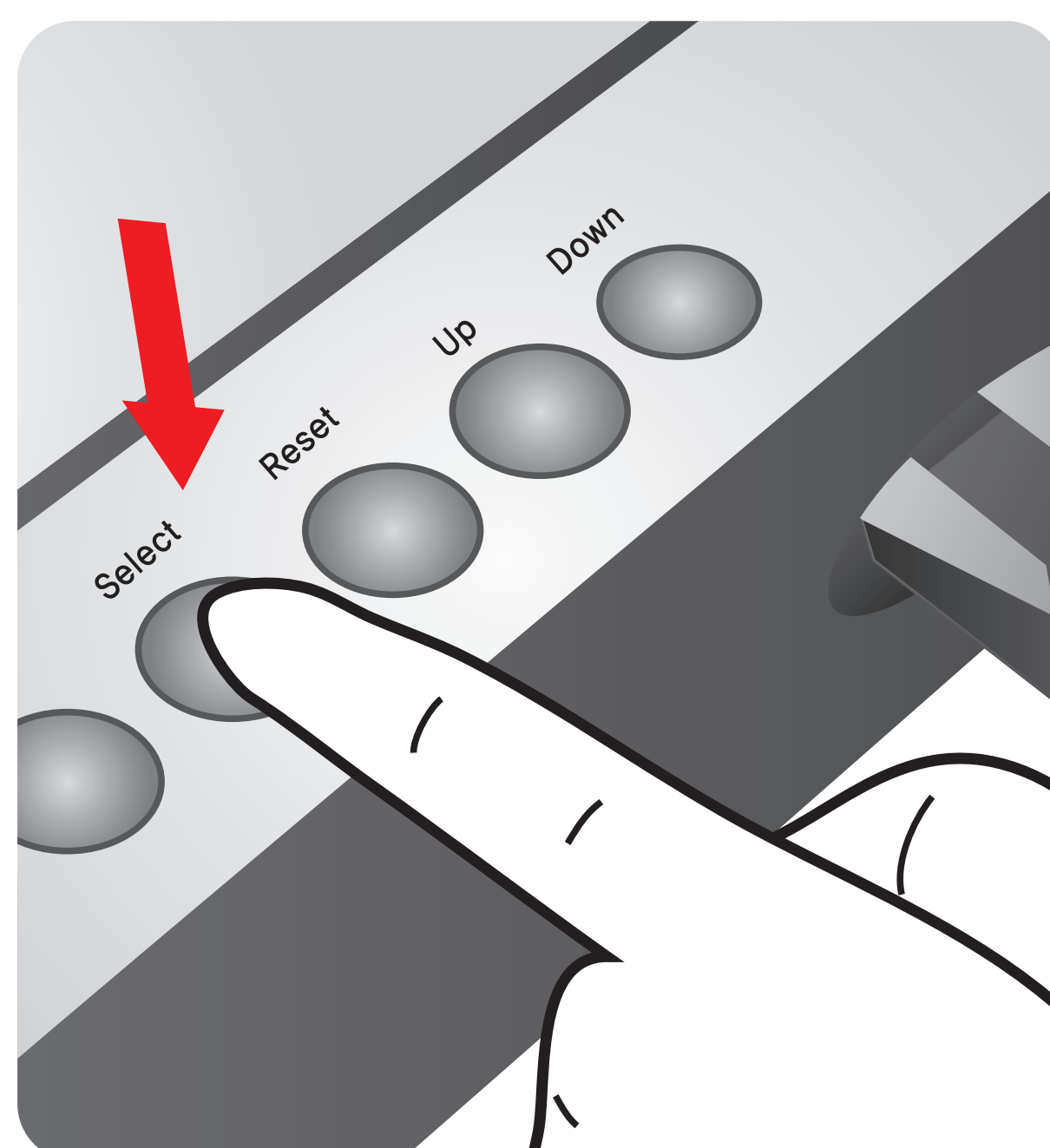
1 Turn the power switch 'On'



2 Insert ID Chip

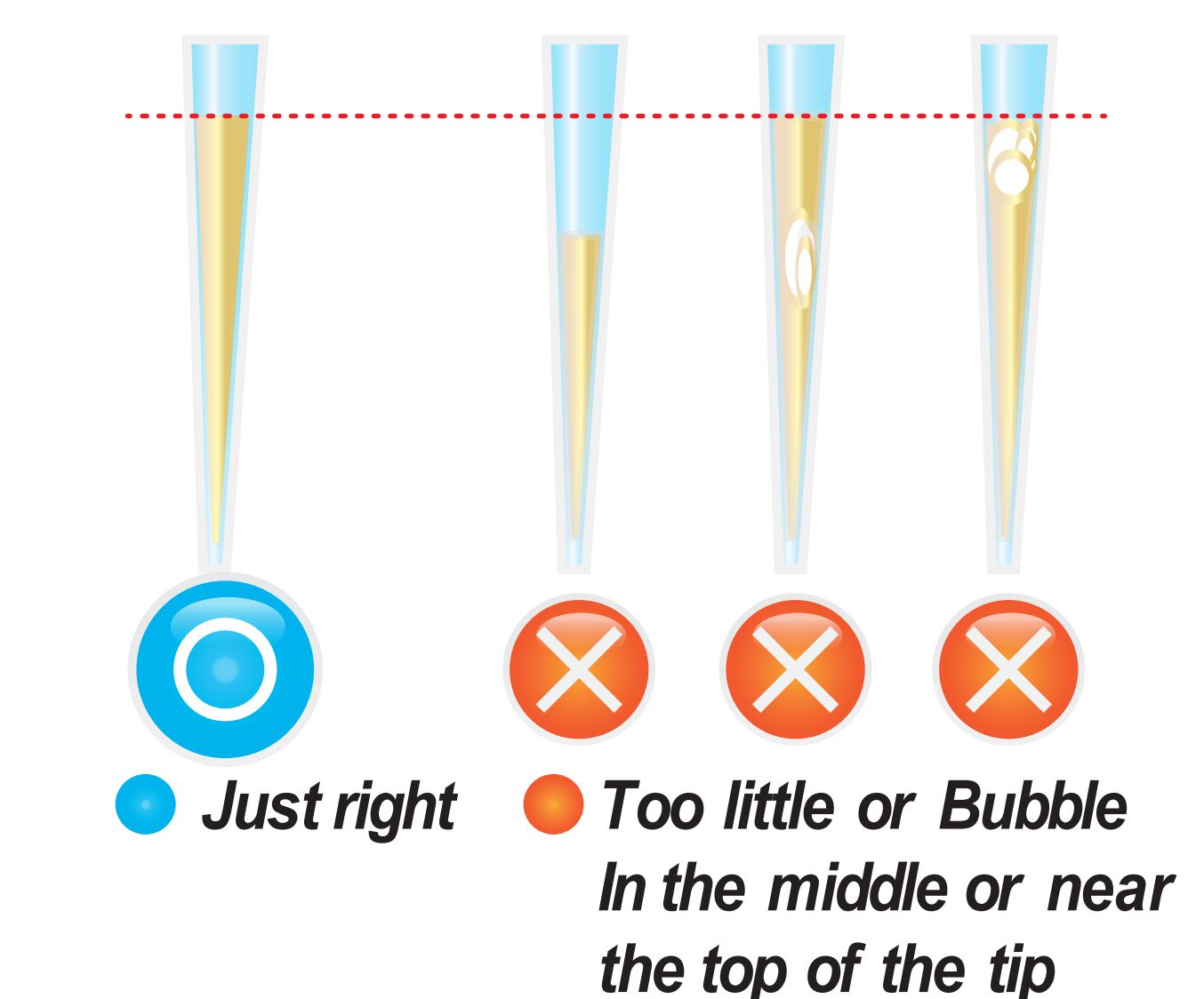
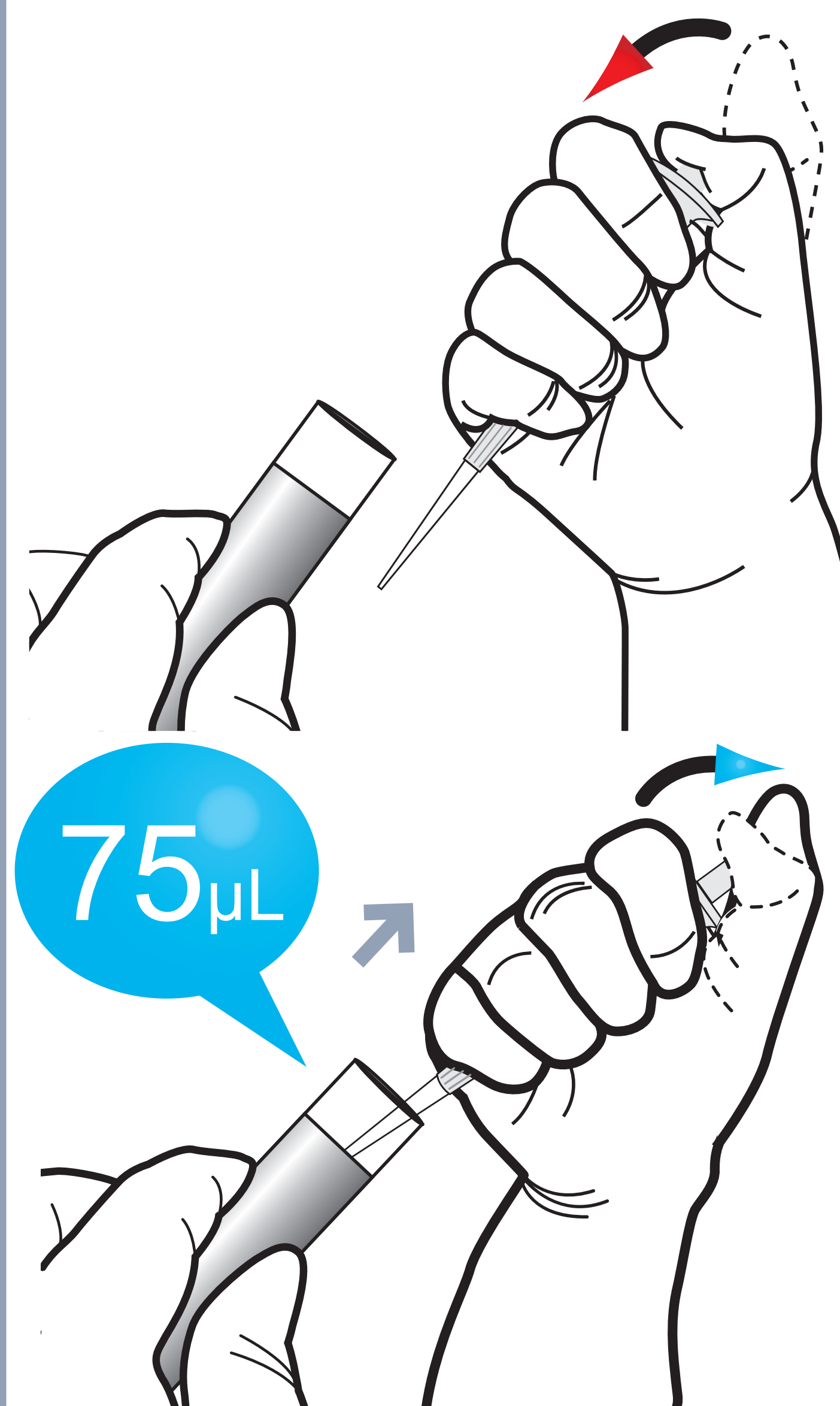


3 Press 'Select'

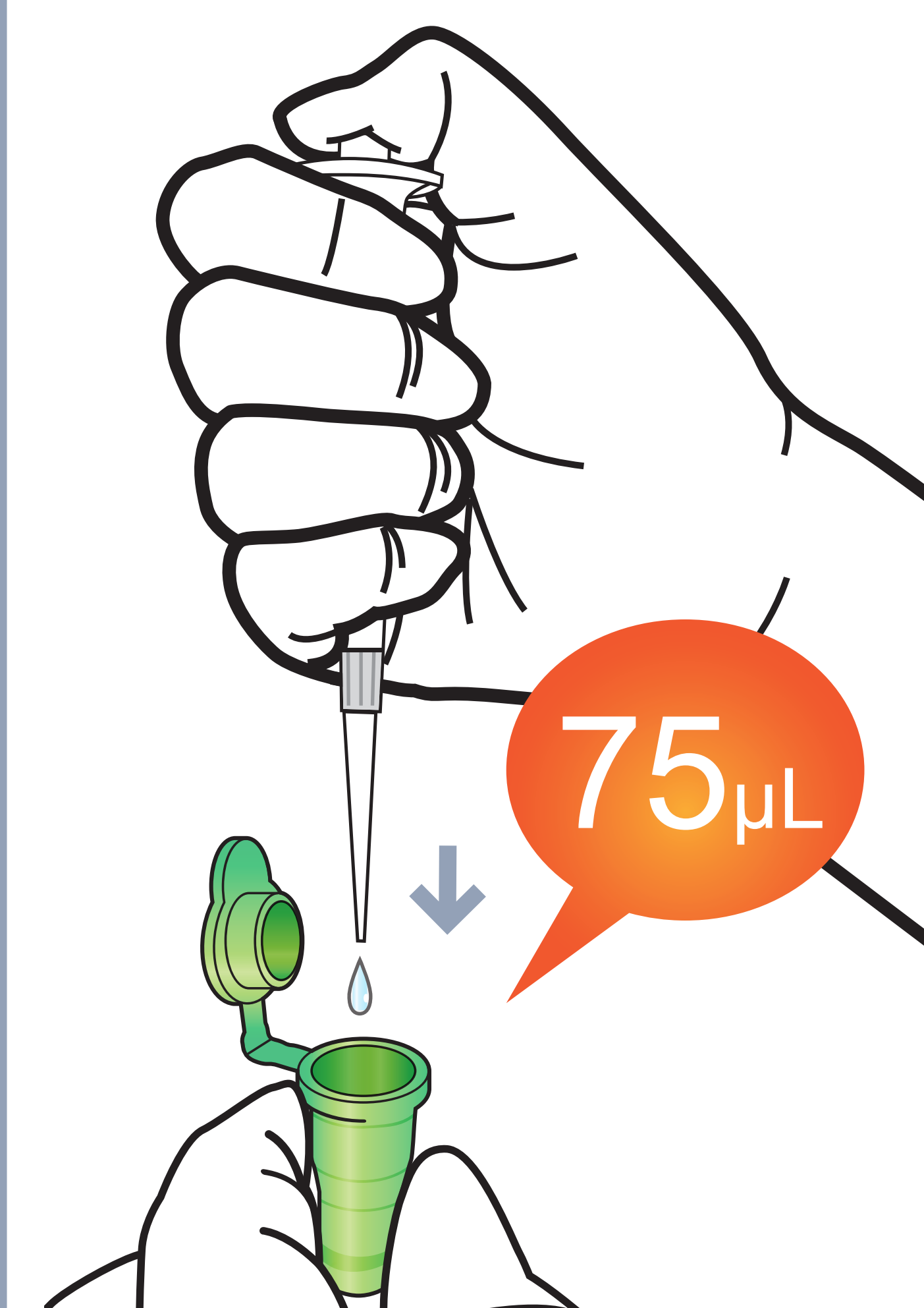


Test Procedure

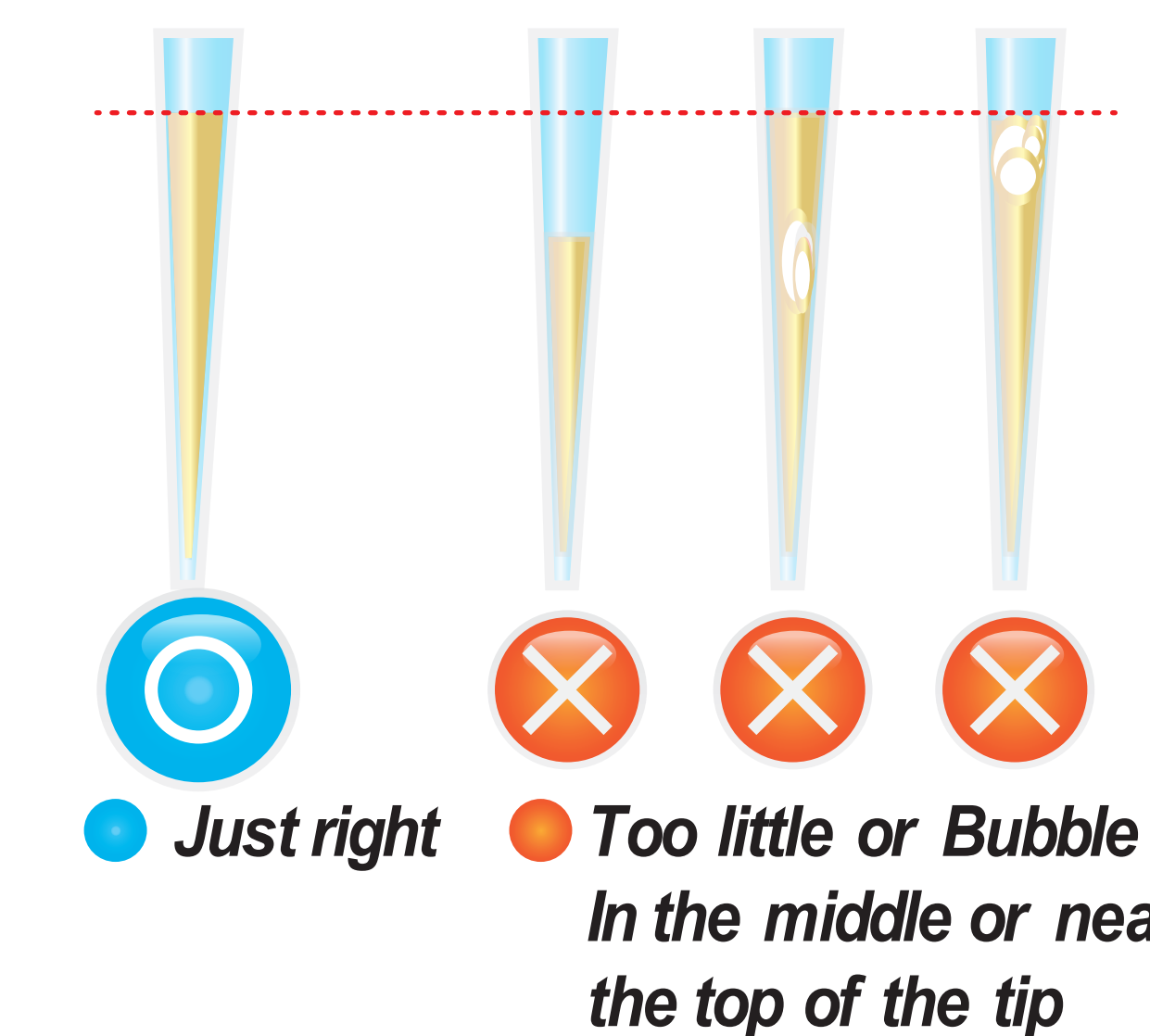
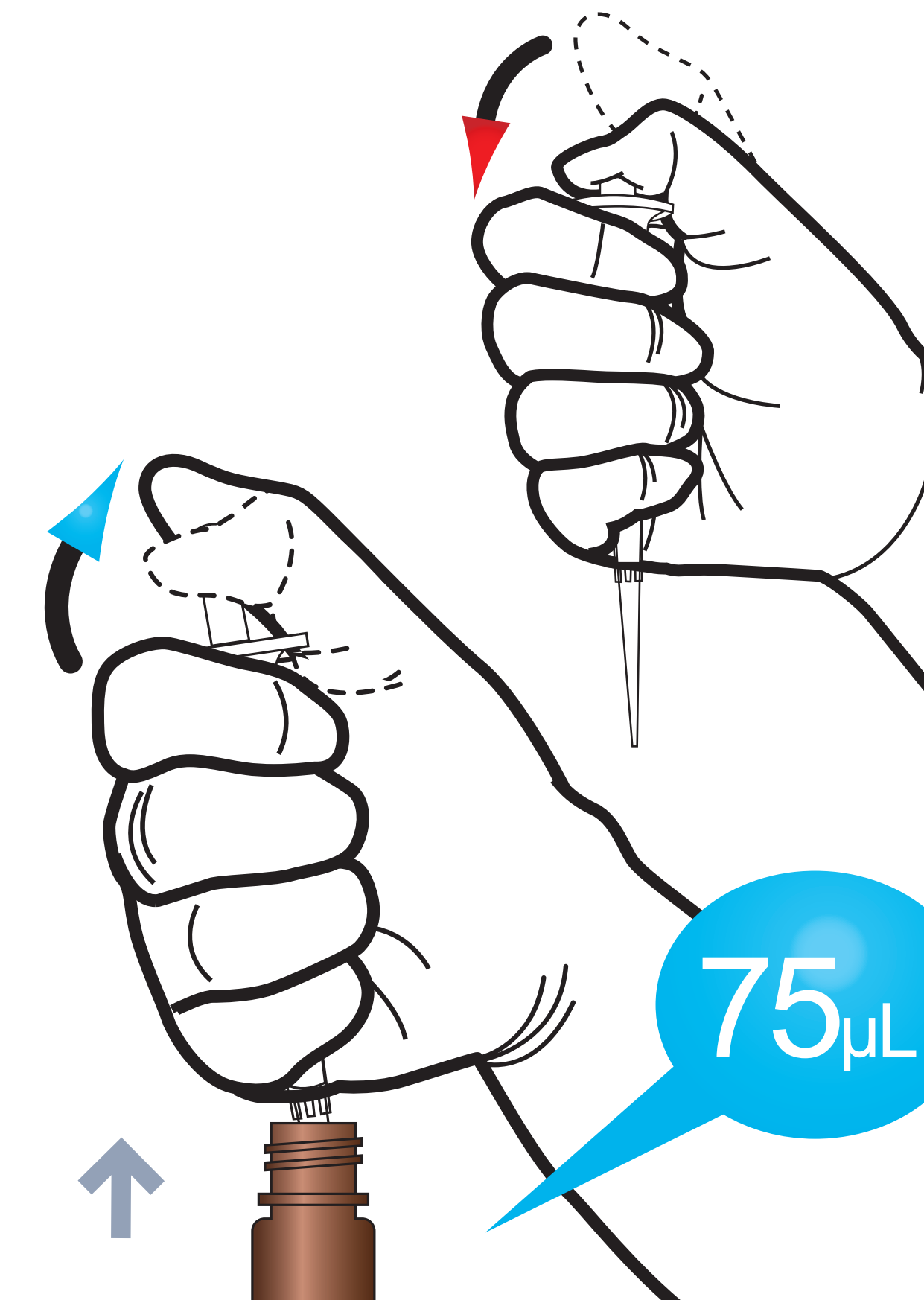
1 Draw 75 μ L (Serum / Plasma)



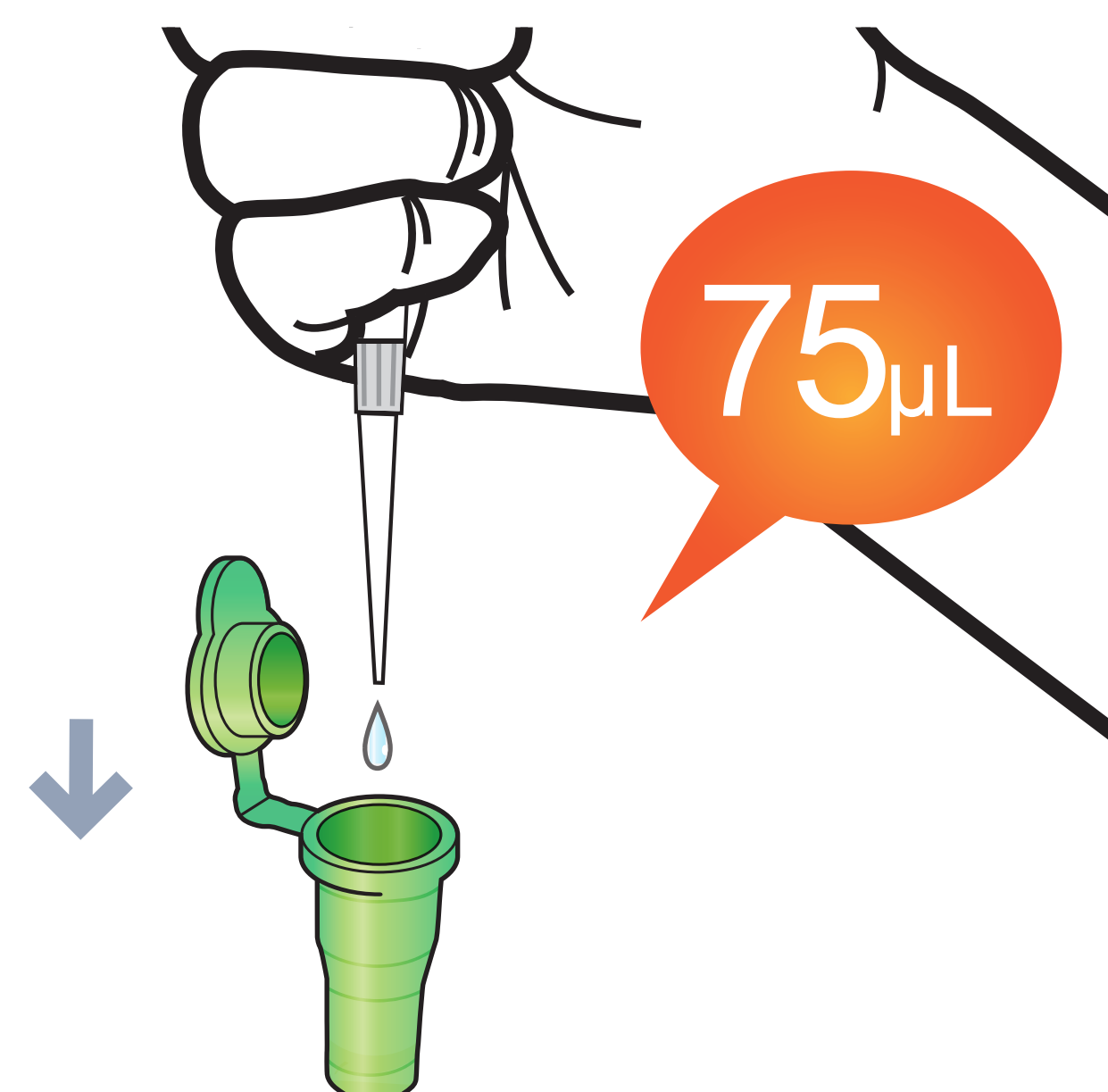
2 Add it into sample mixing tube



3 Draw 75 μ L (Detection buffer vial)

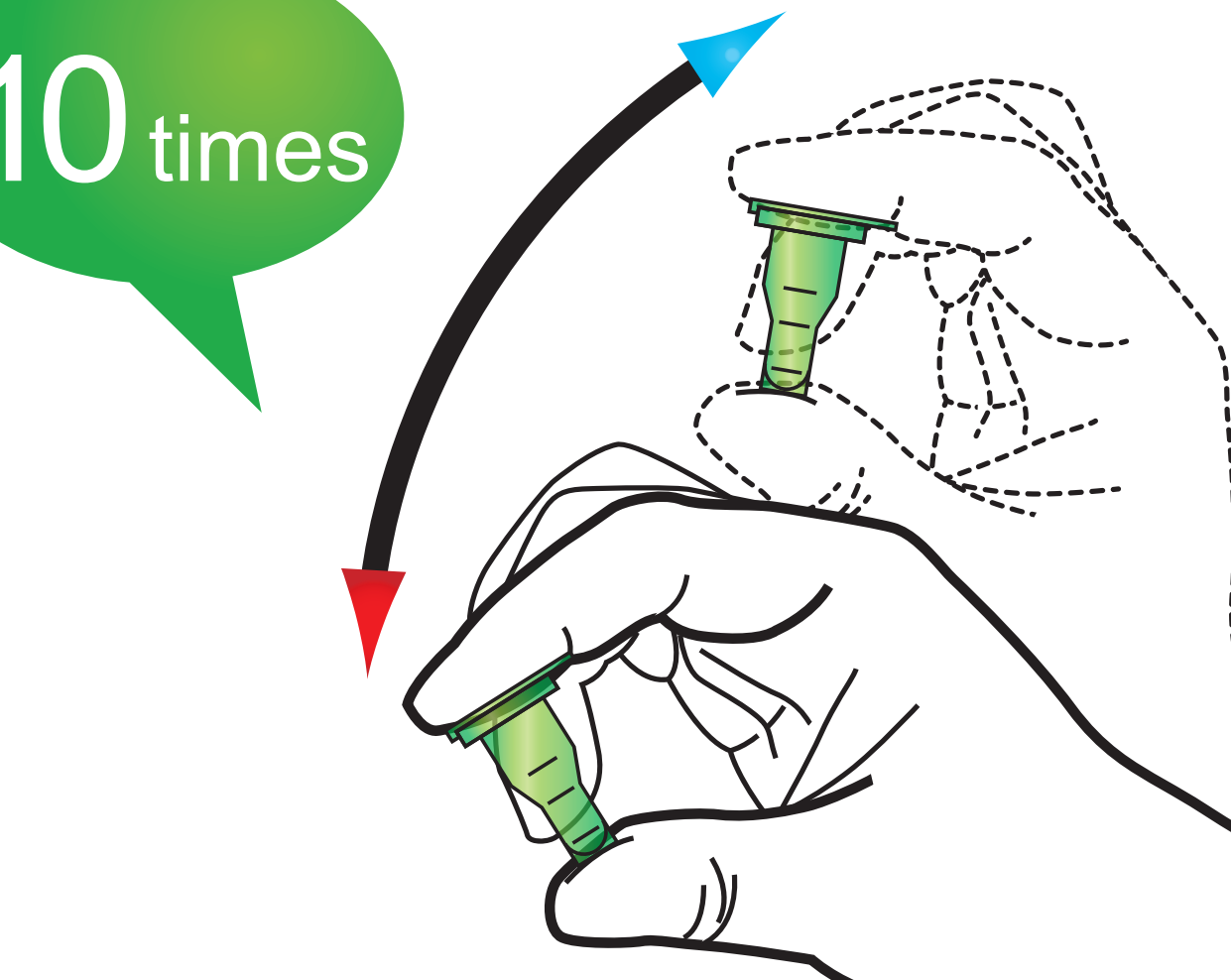


4 Add it into sample mixing tube

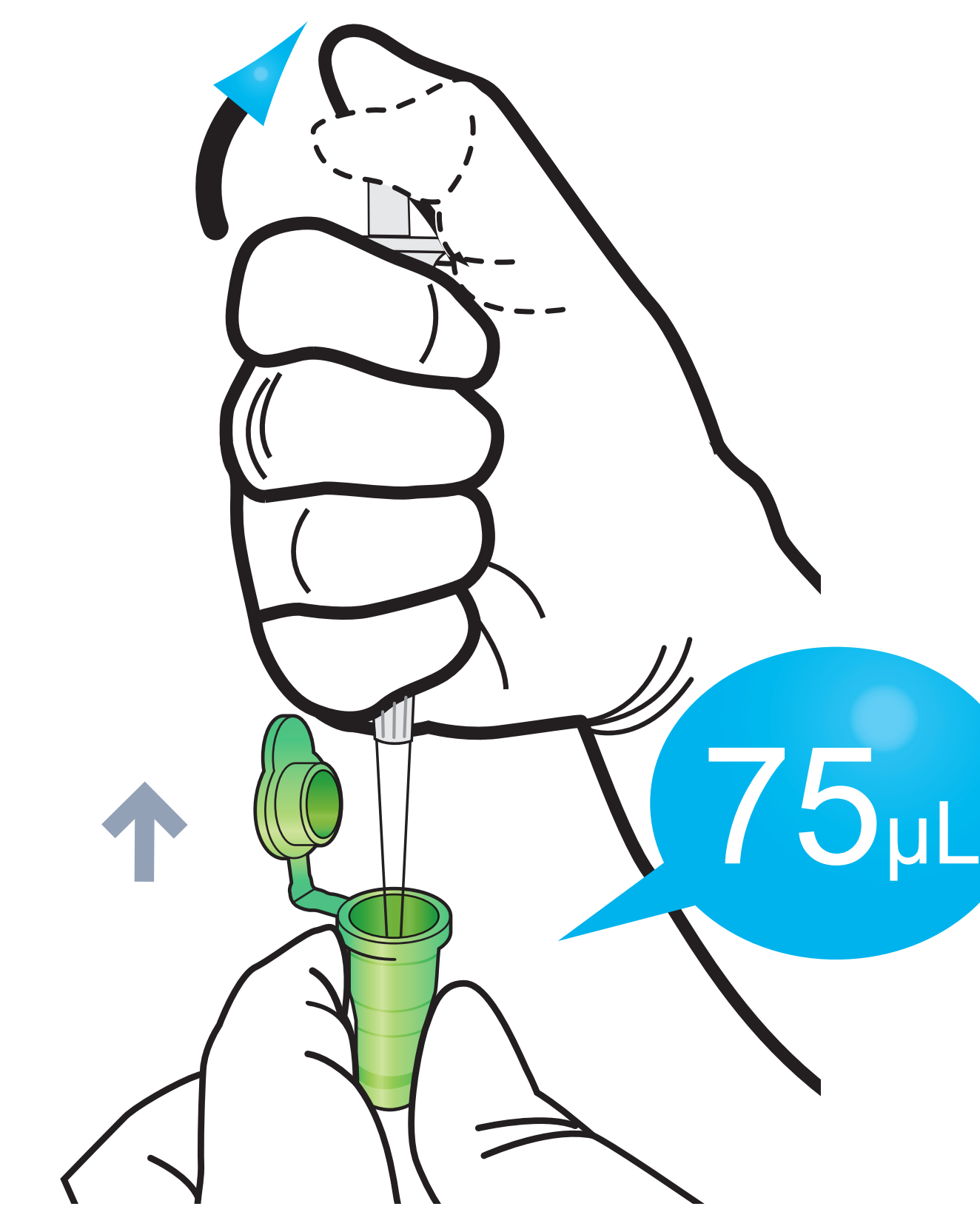
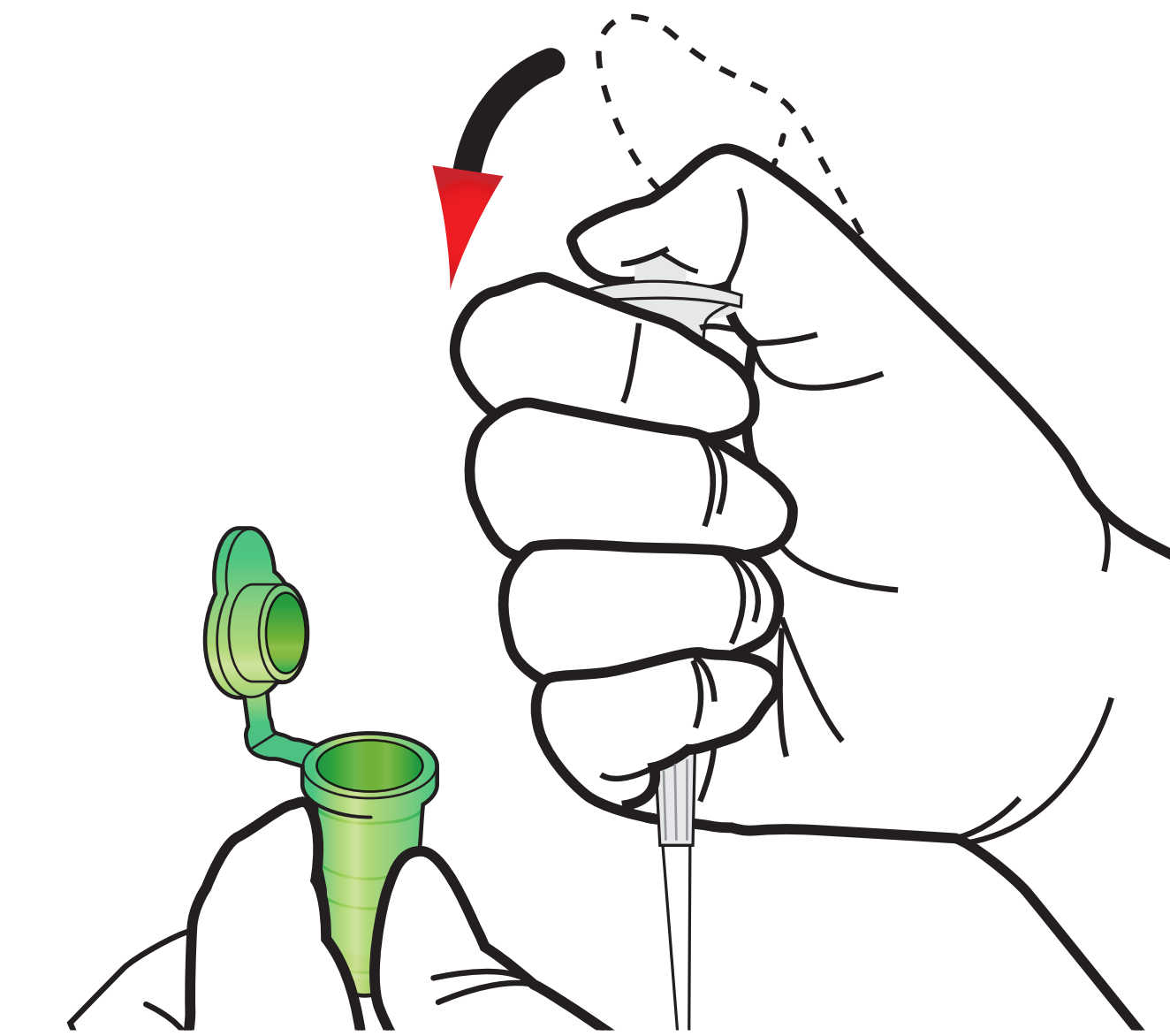


5 Shake the sample mixing tube

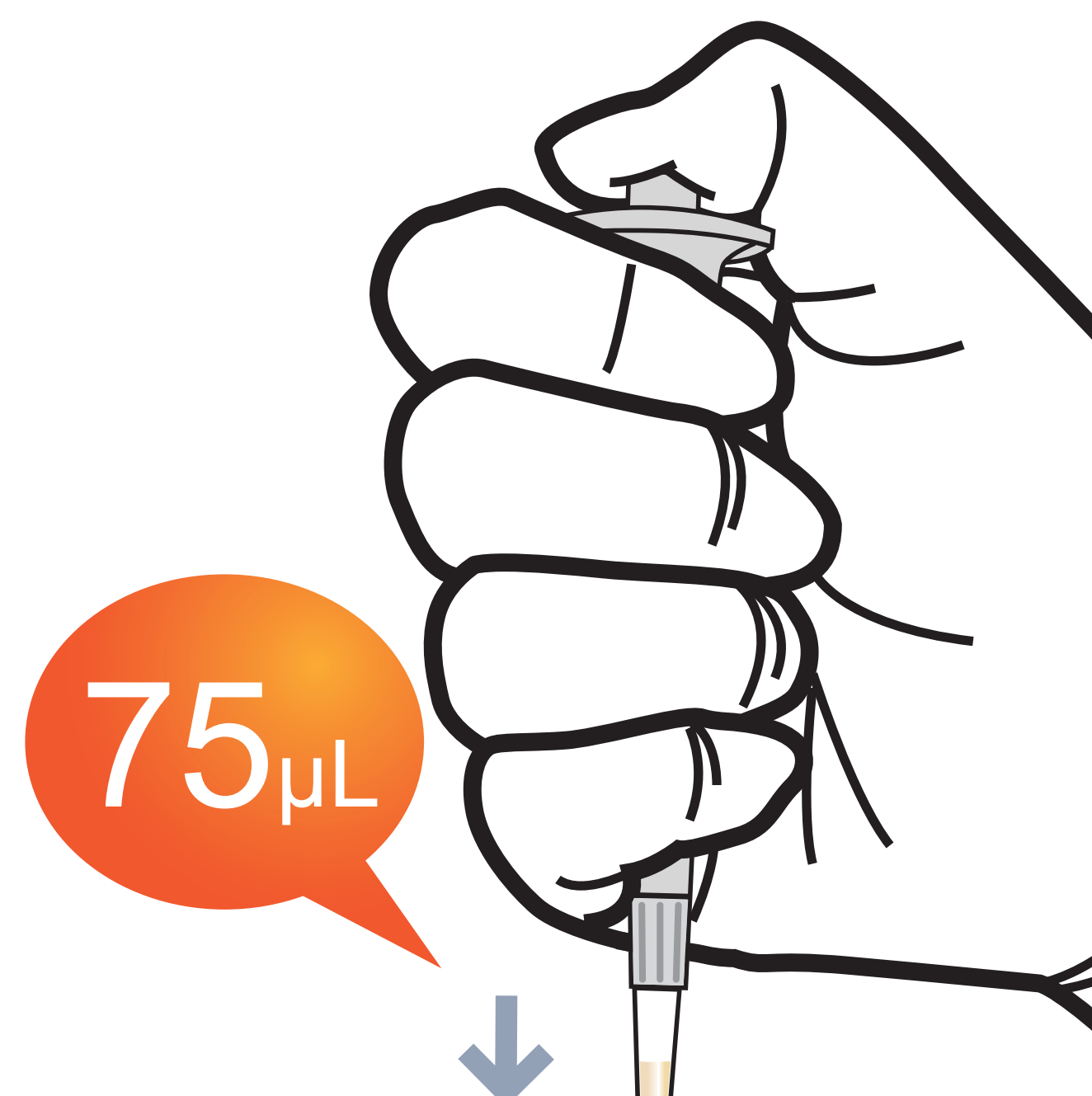
10 times



6 Draw the sample mixture



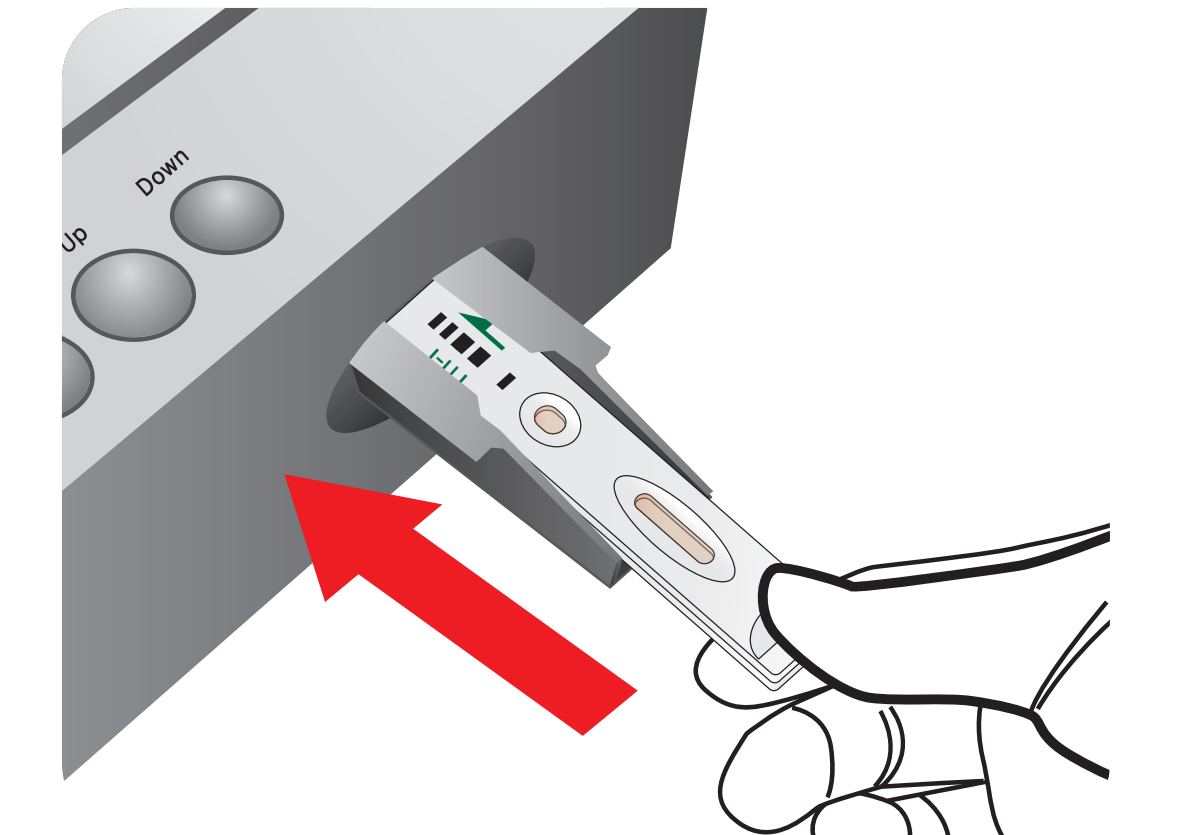
7 Load the sample mixture



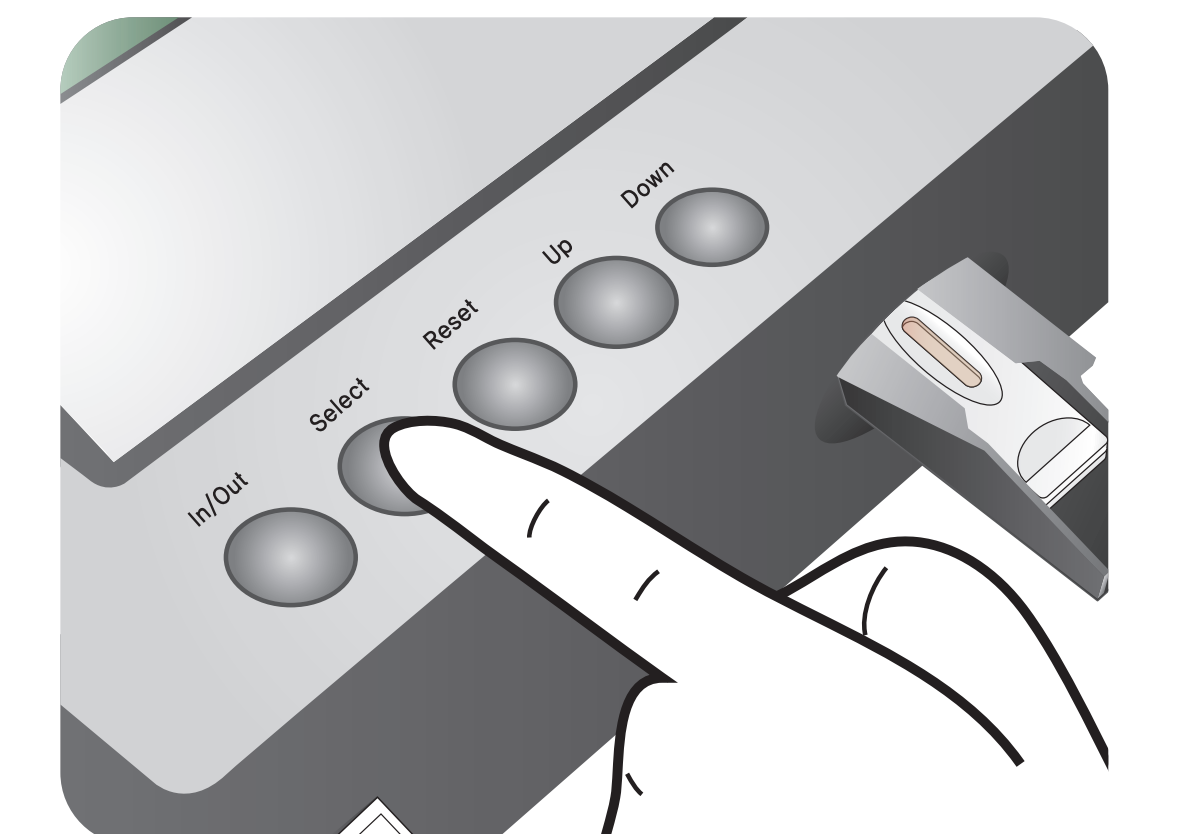
8 Waiting 12 minutes



9 Insert the test cartridge



10 Press 'Select'



11 Read the test result

