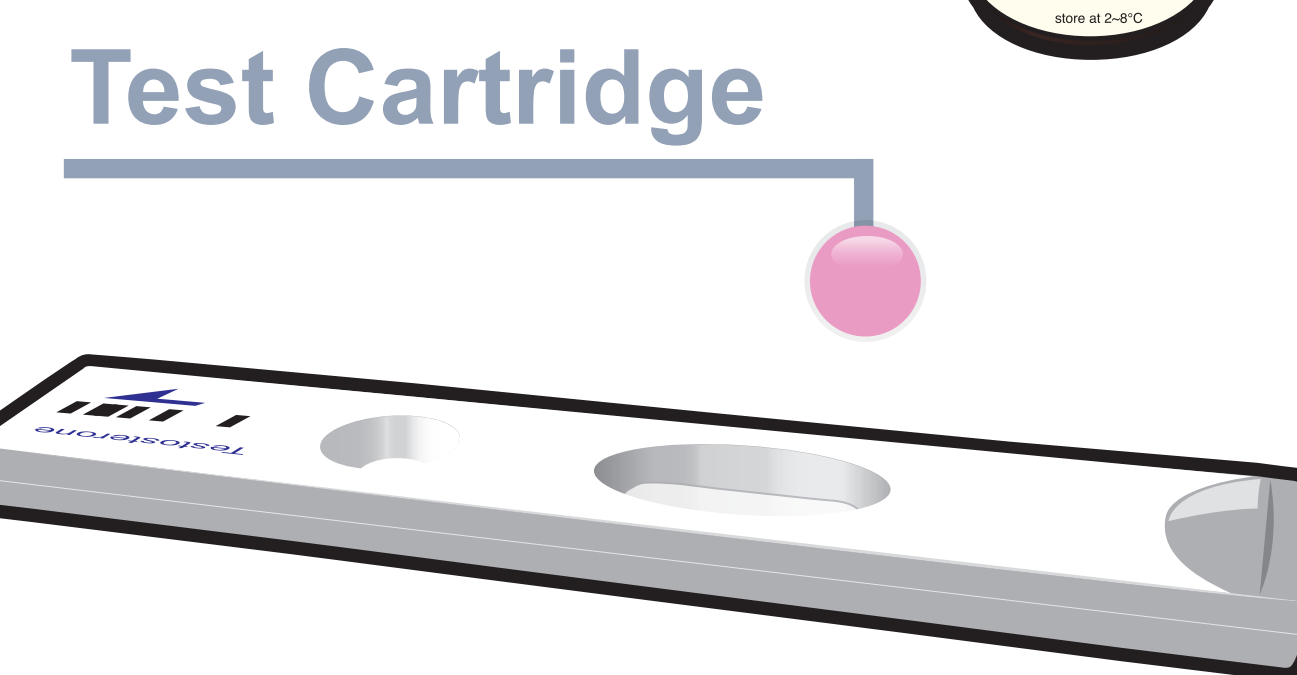
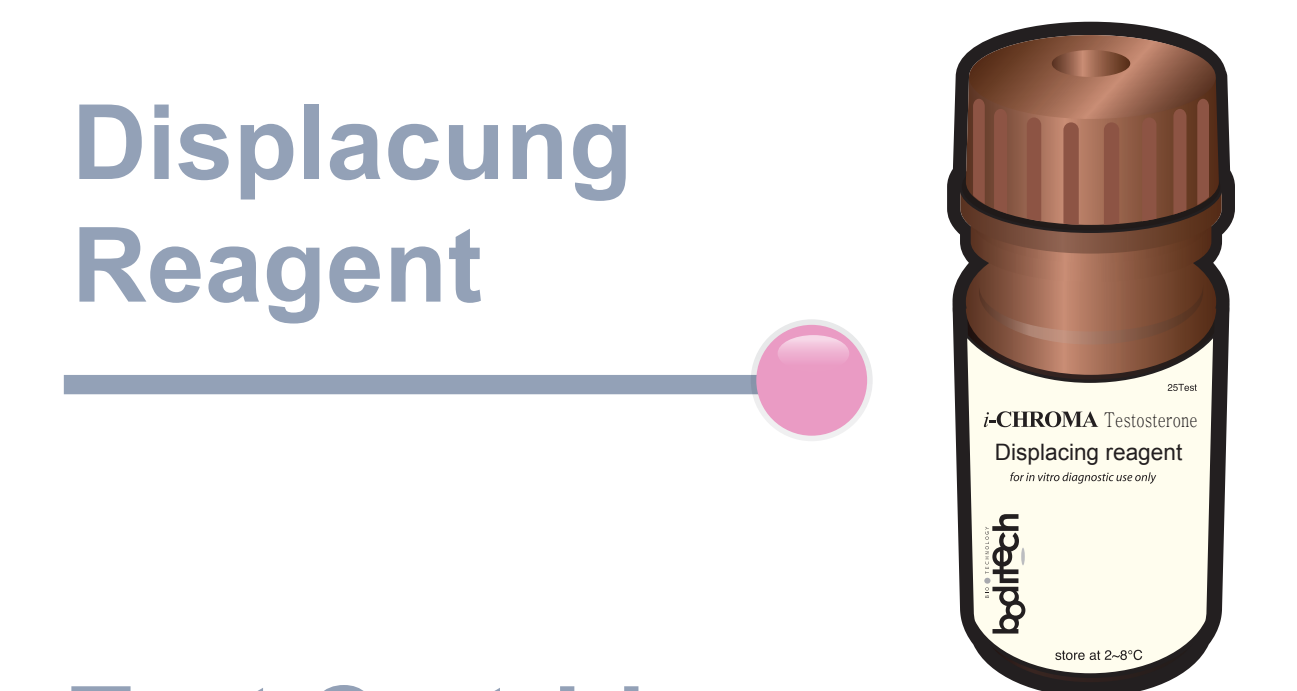
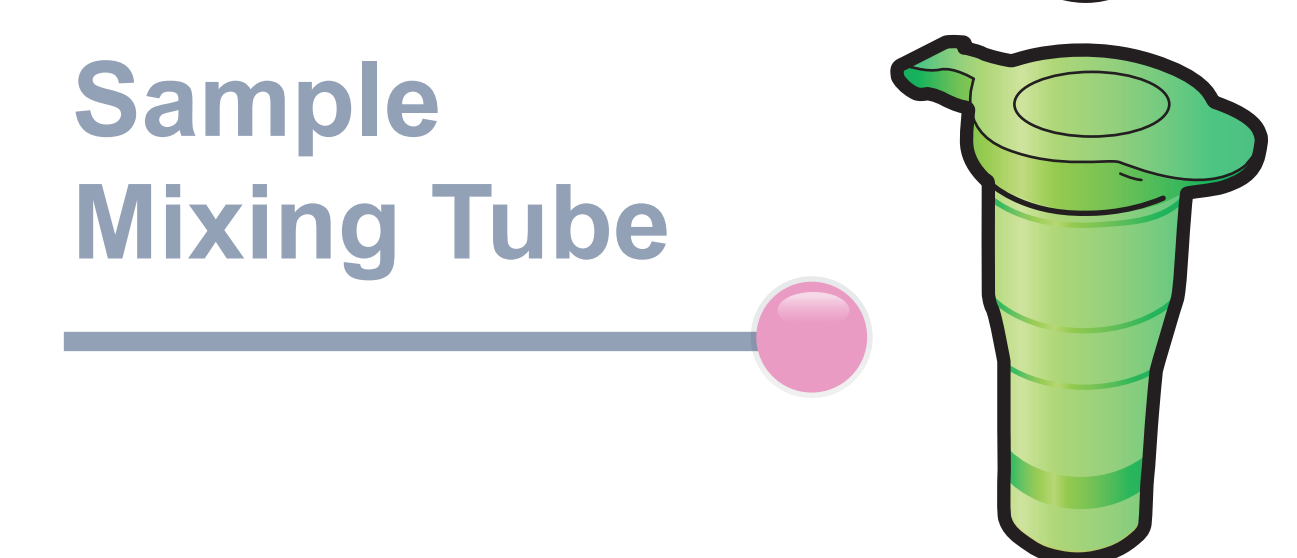
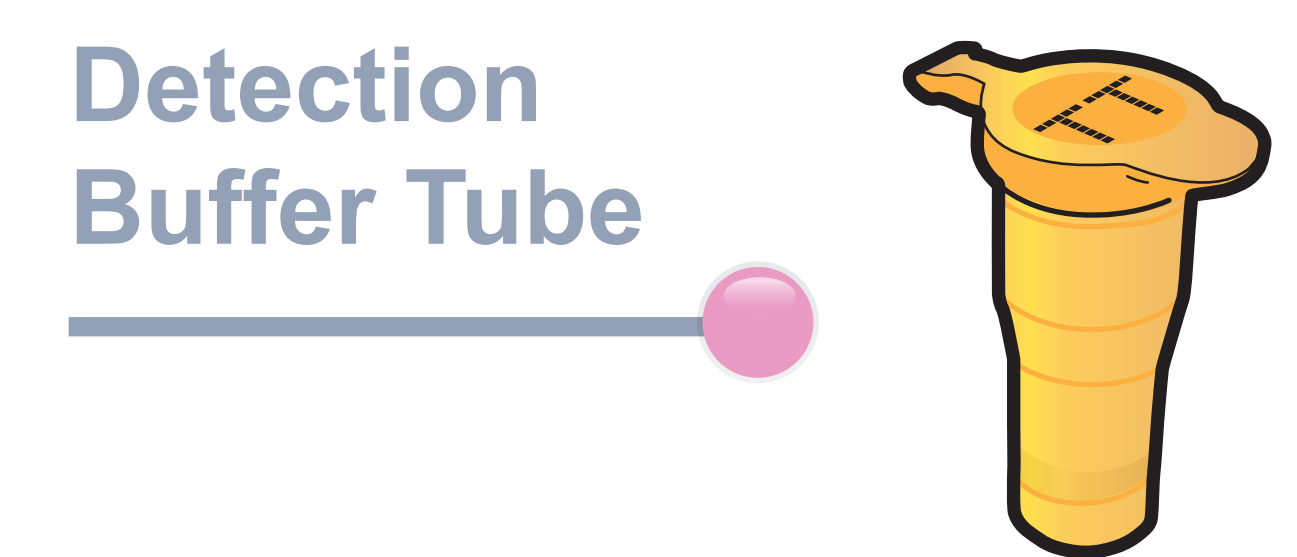
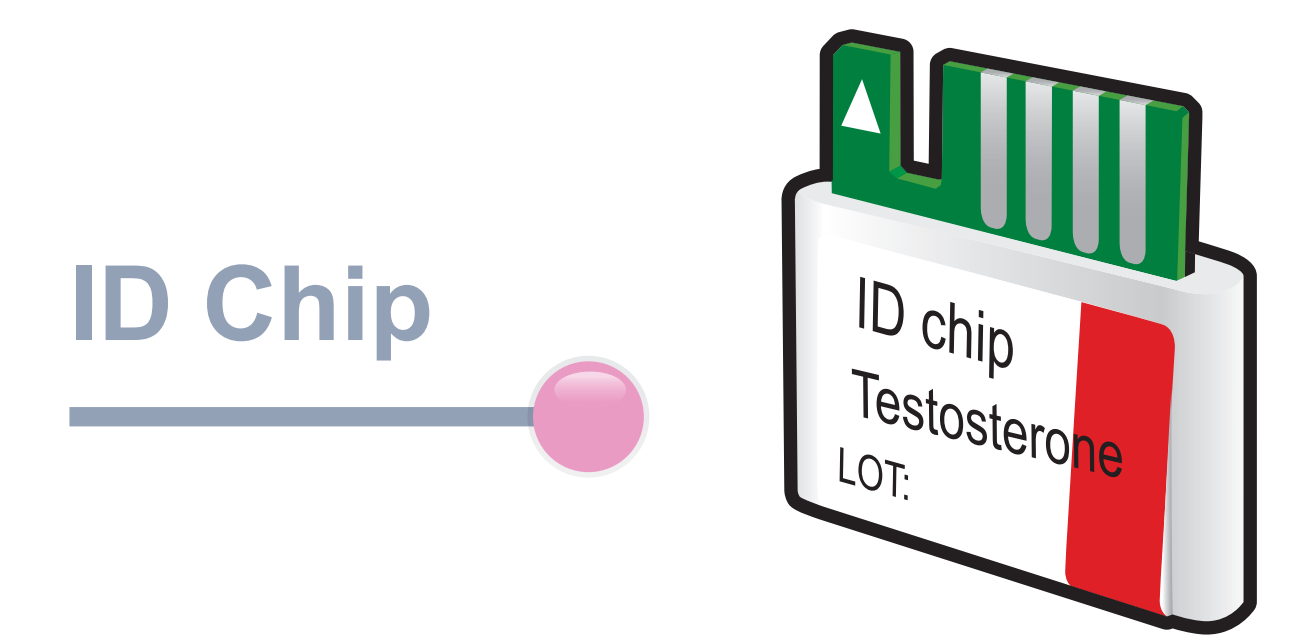


# ichromα™ Testosterone

## Test Setup

### Test Components

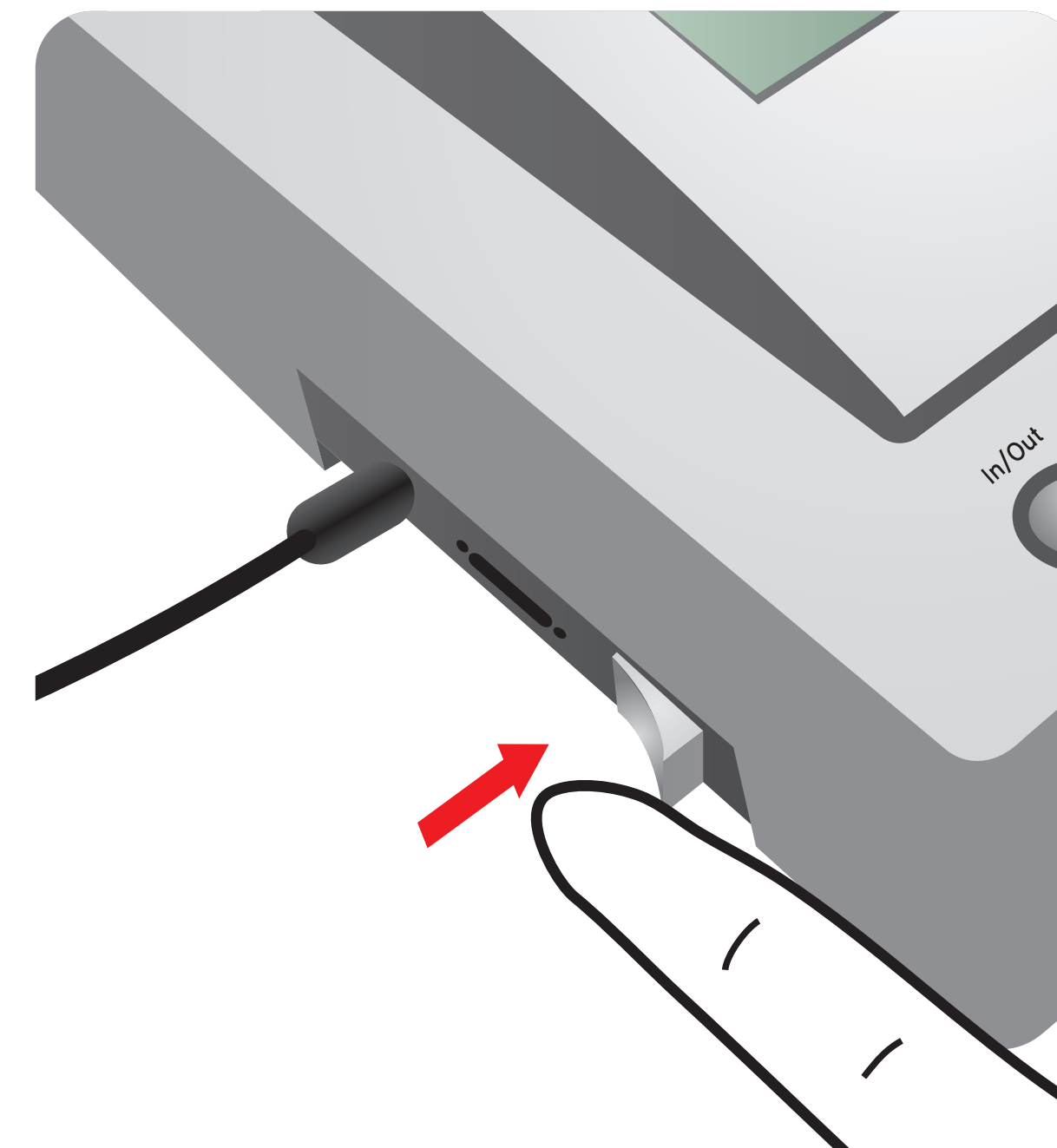


### Important

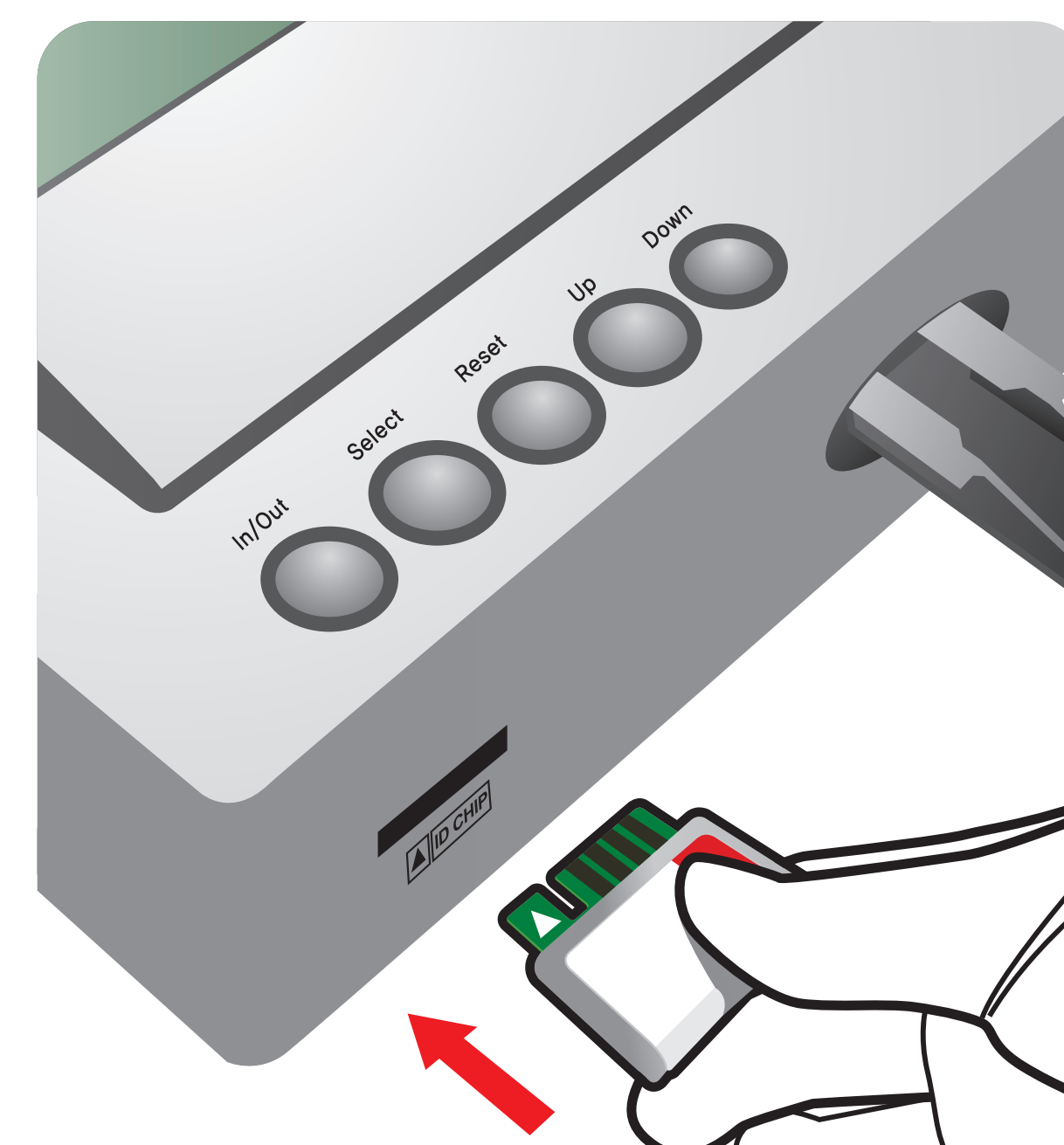
Allow 'Detection Buffer Tube' to attain room temperature at least for 30 minutes before performing the test

Make sure that lot number of the 'ID Chip' is exactly same as the lot number of 'Test Cartridge' and 'Detection Buffer Tube'

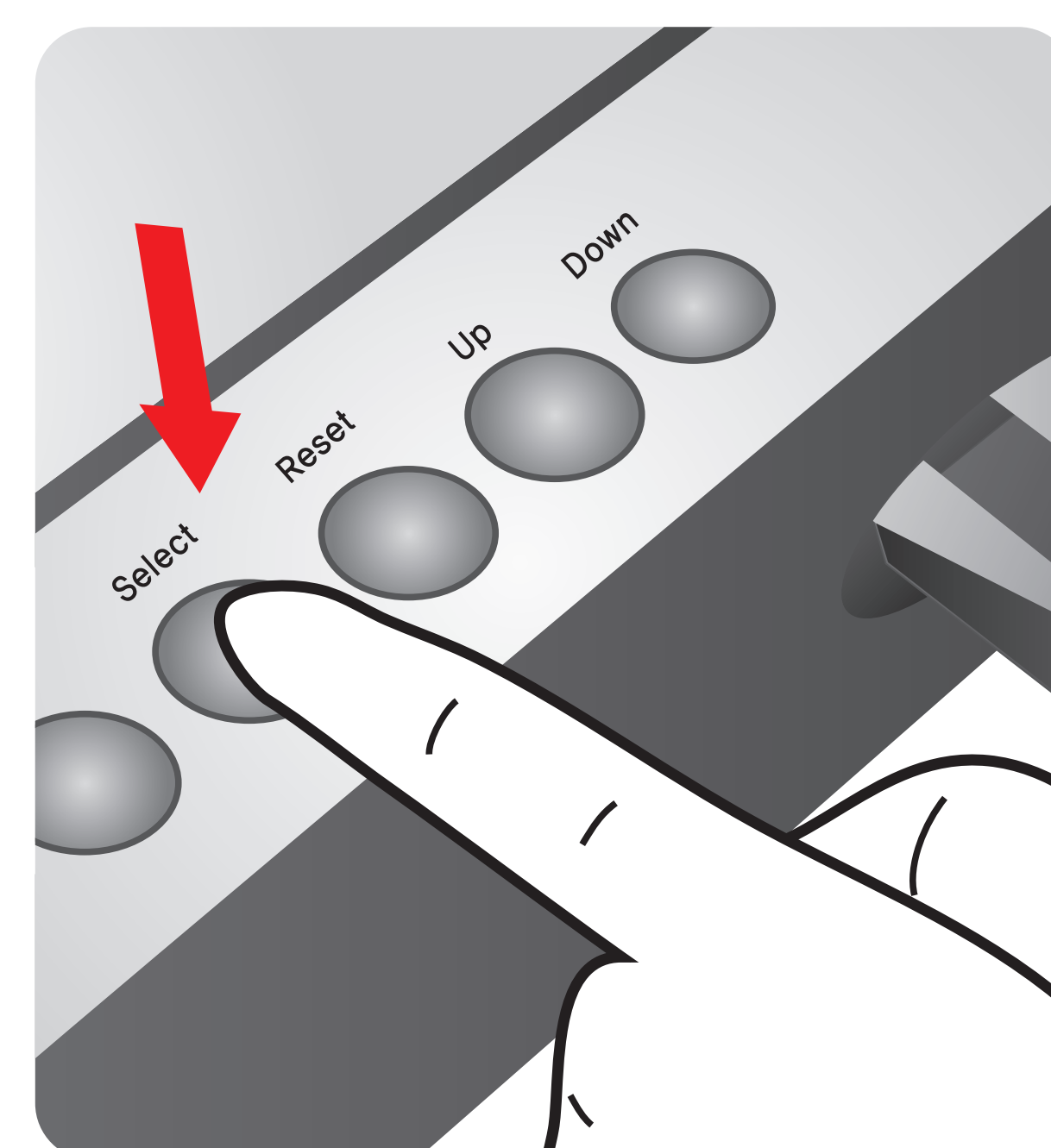
1 Turn the power switch 'On'



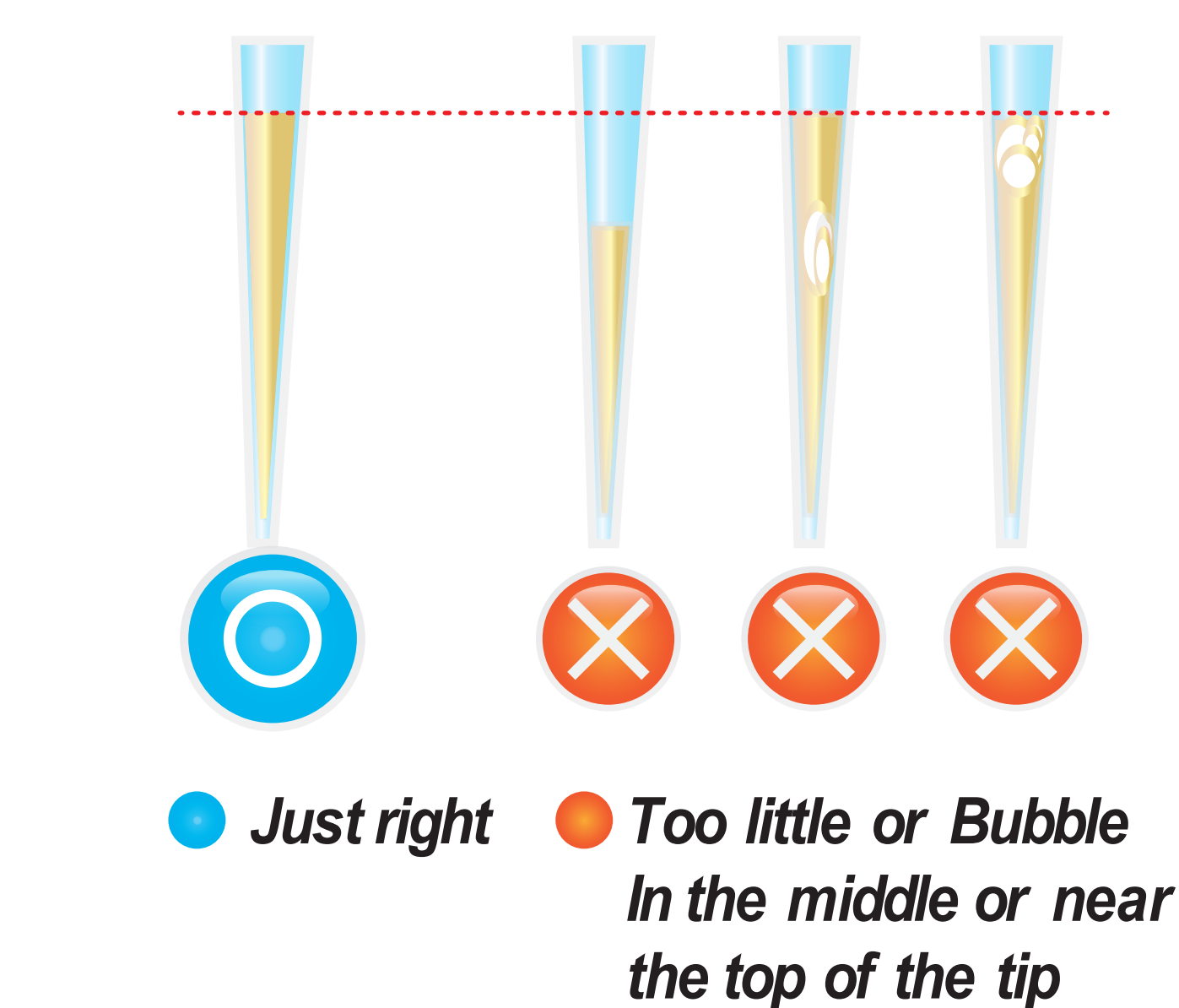
2 Insert ID Chip



3 Press 'Select'



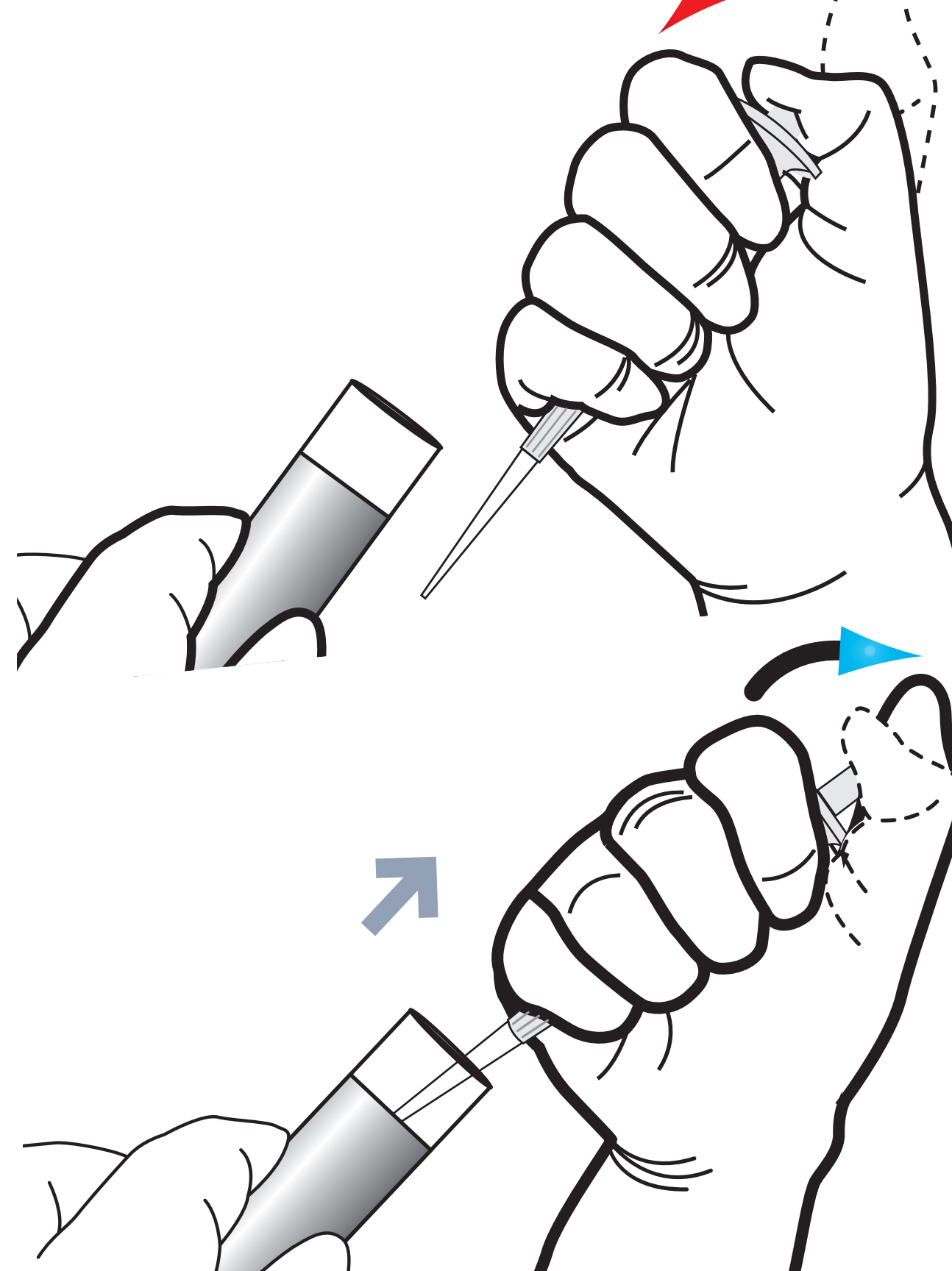
1 Draw 30  $\mu$ L (Displacing reagent)



2 Add it into sample mixing tube



3 Draw 75  $\mu$ L (Serum/Plasma)



4 Add it into sample mixing tube



5 Shake the sample mixing tube

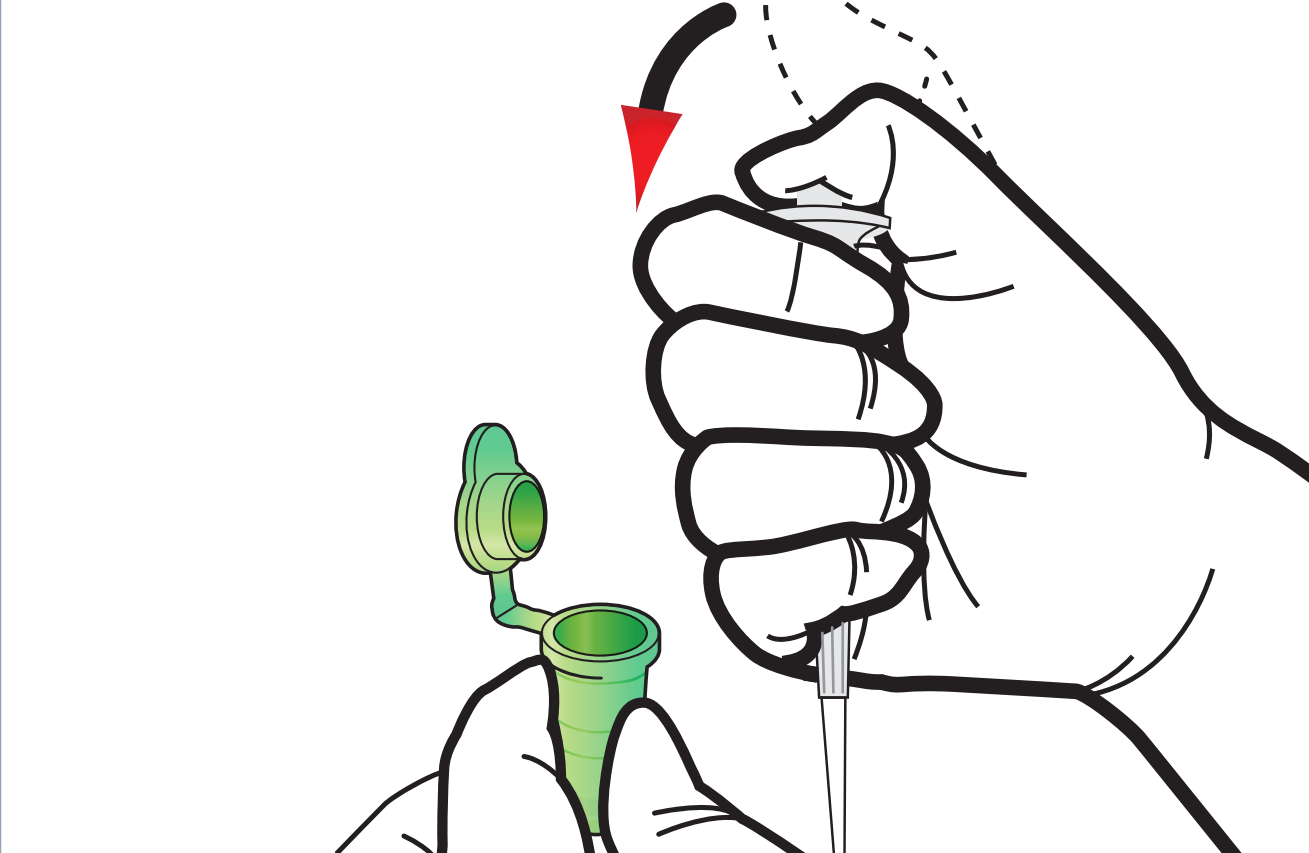


6 Stand for 3 minutes

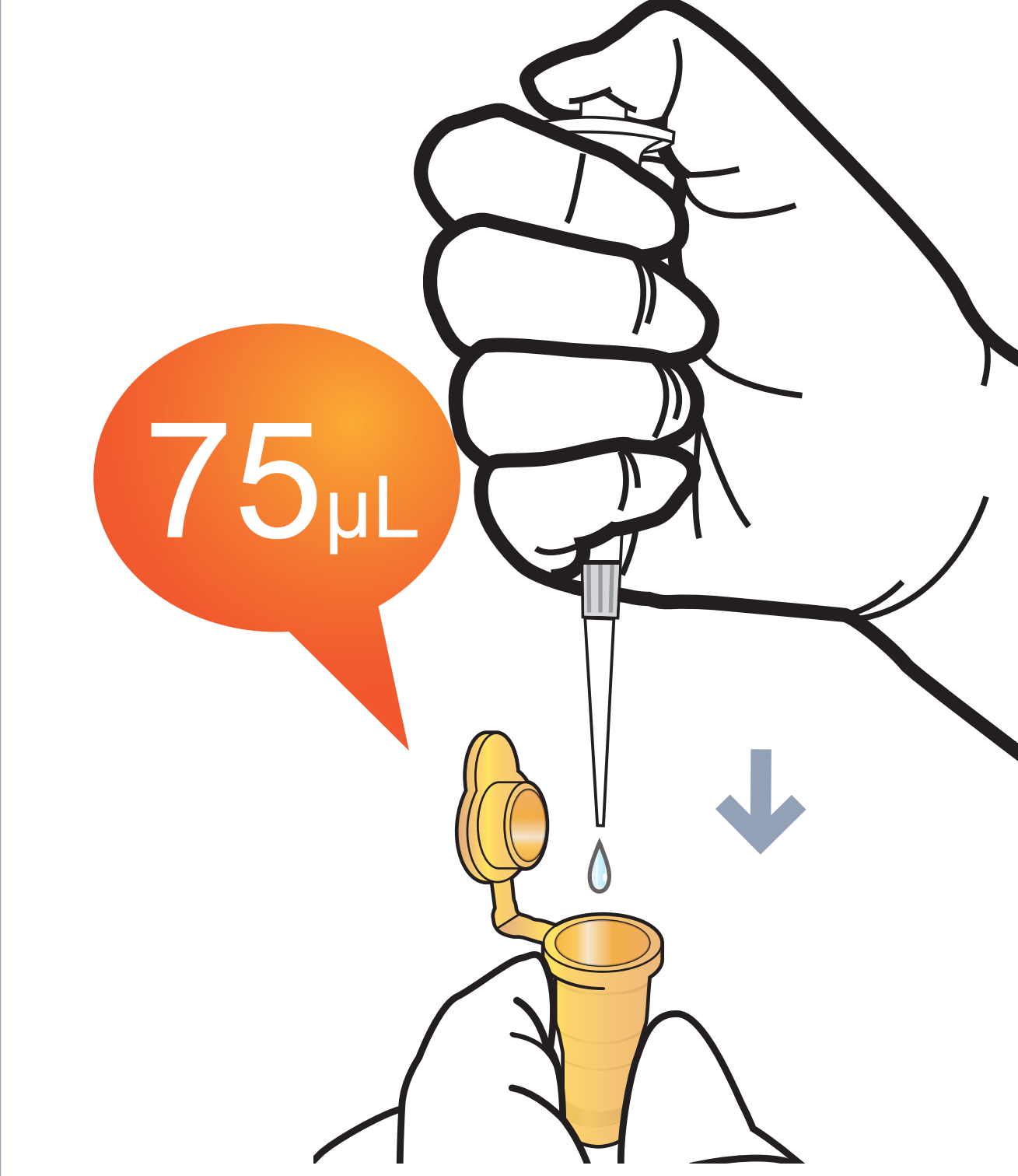


## Test Procedure

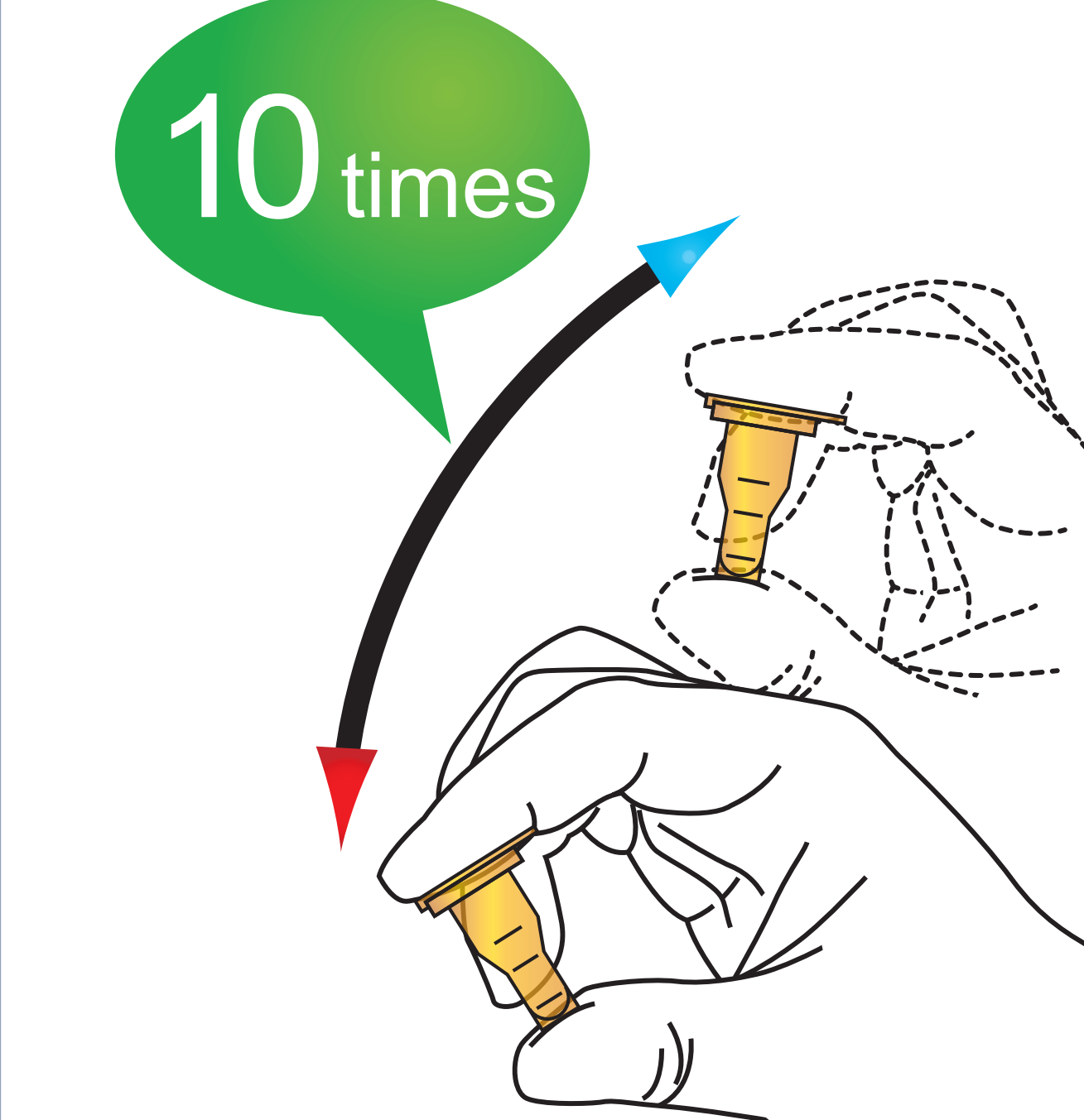
7 Draw the sample mixture



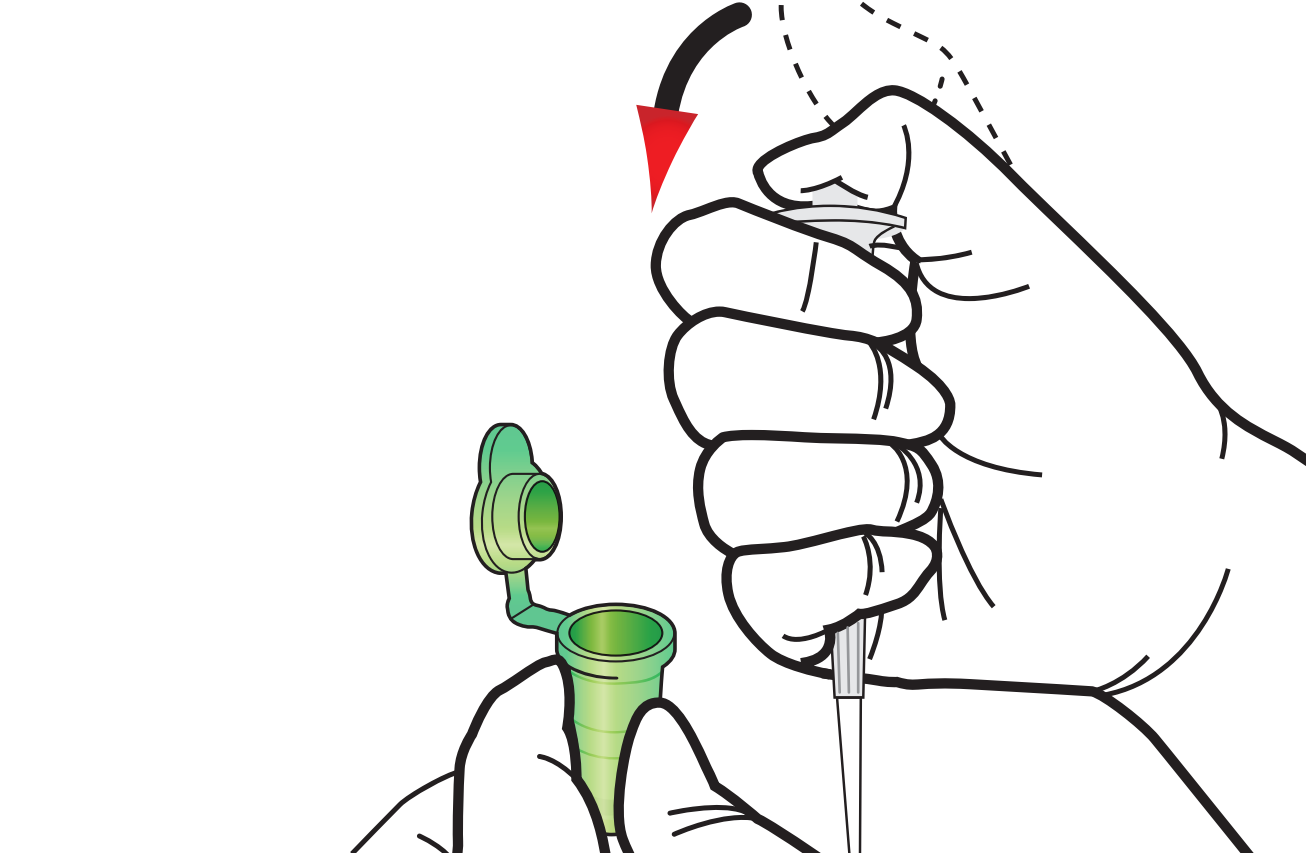
8 Add it into detection buffer tube



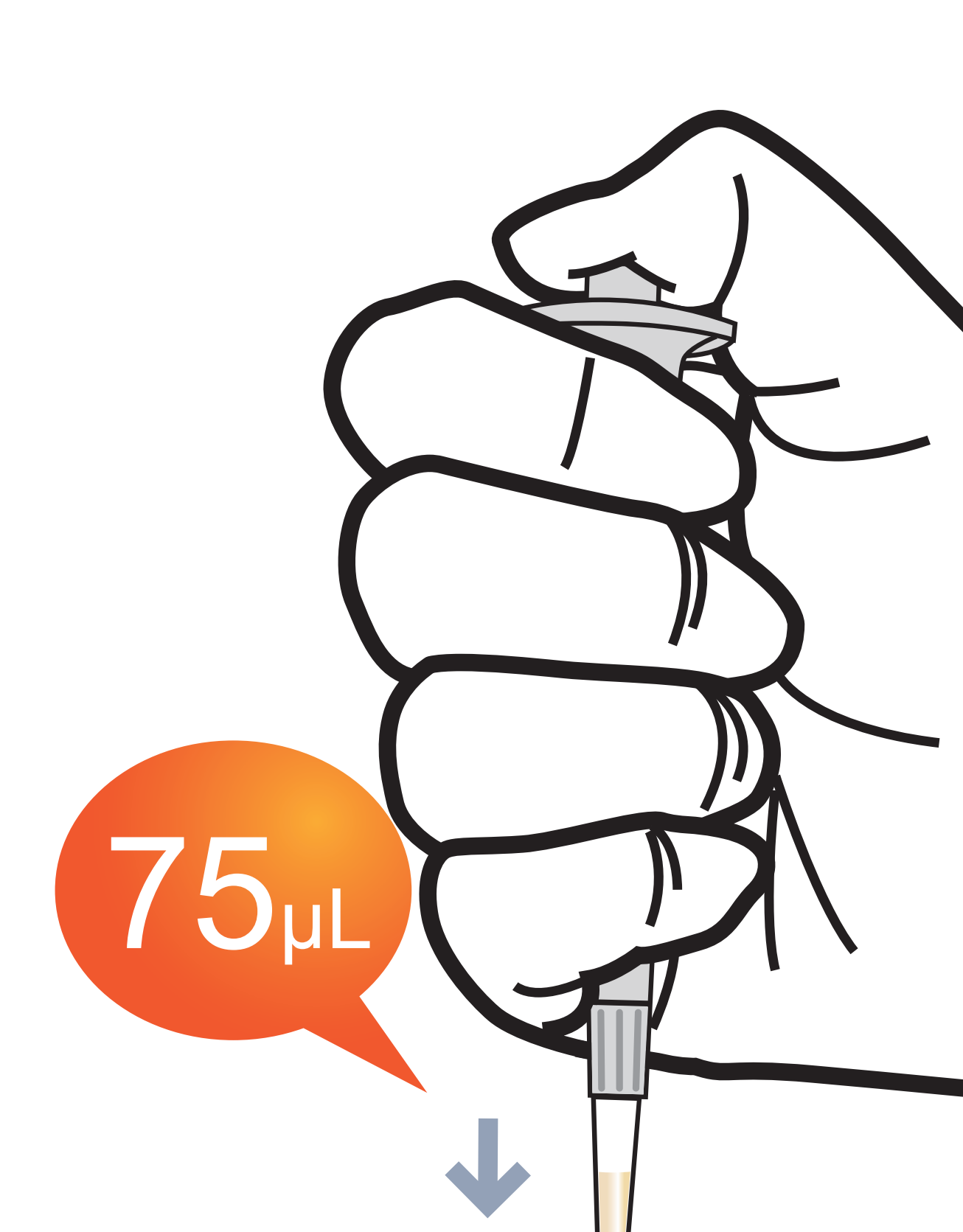
9 Shake the detection buffer tube



10 Draw the sample mixture



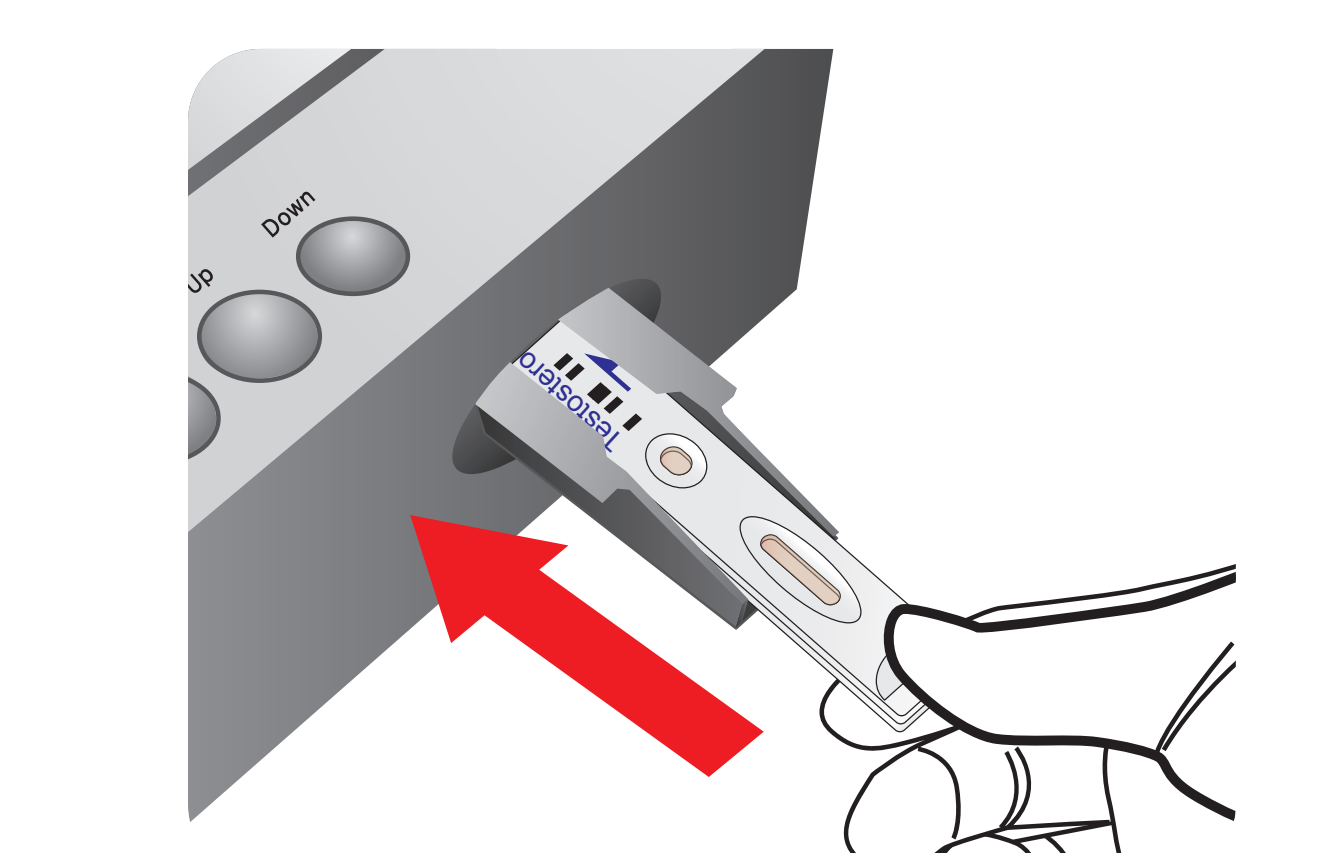
11 Load the sample mixture



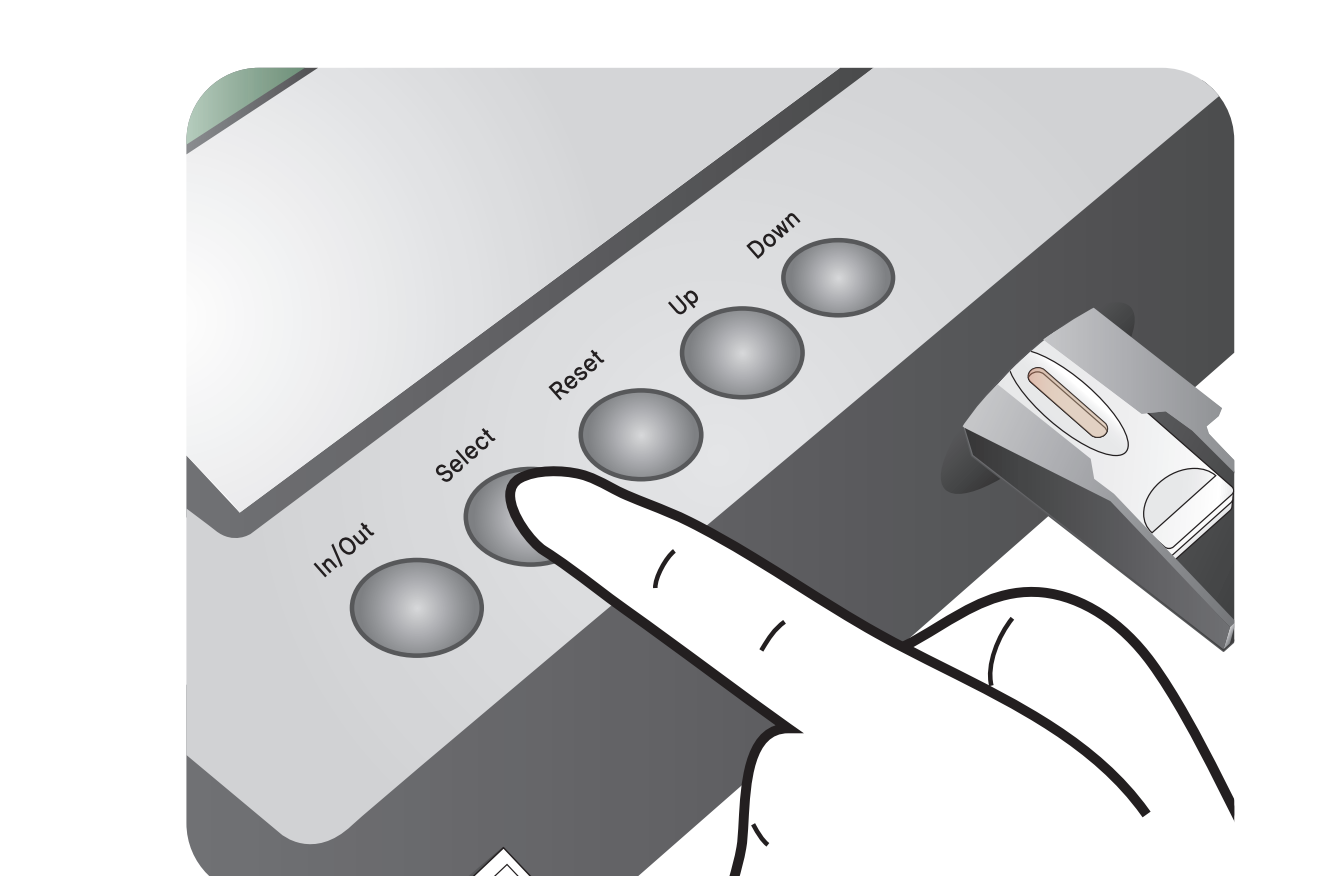
12 Waiting 12 minutes



13 Insert the test cartridge



14 Press 'Select'



15 Read the test result

