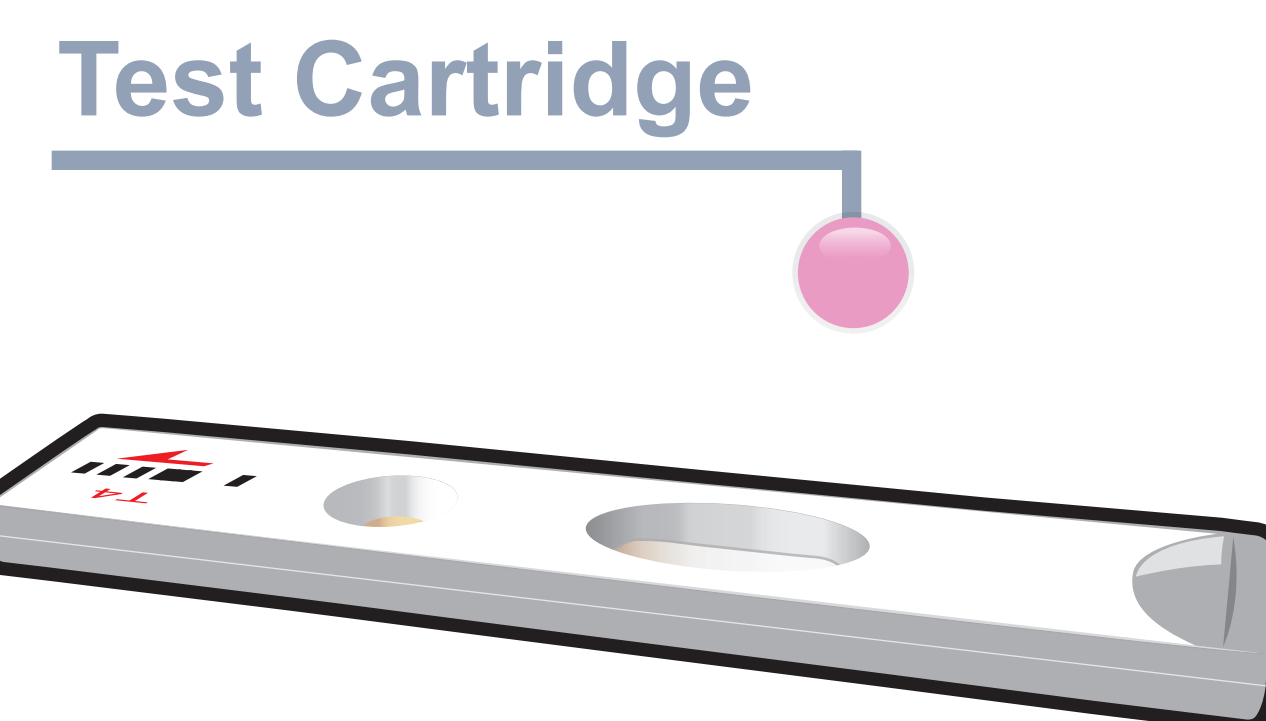
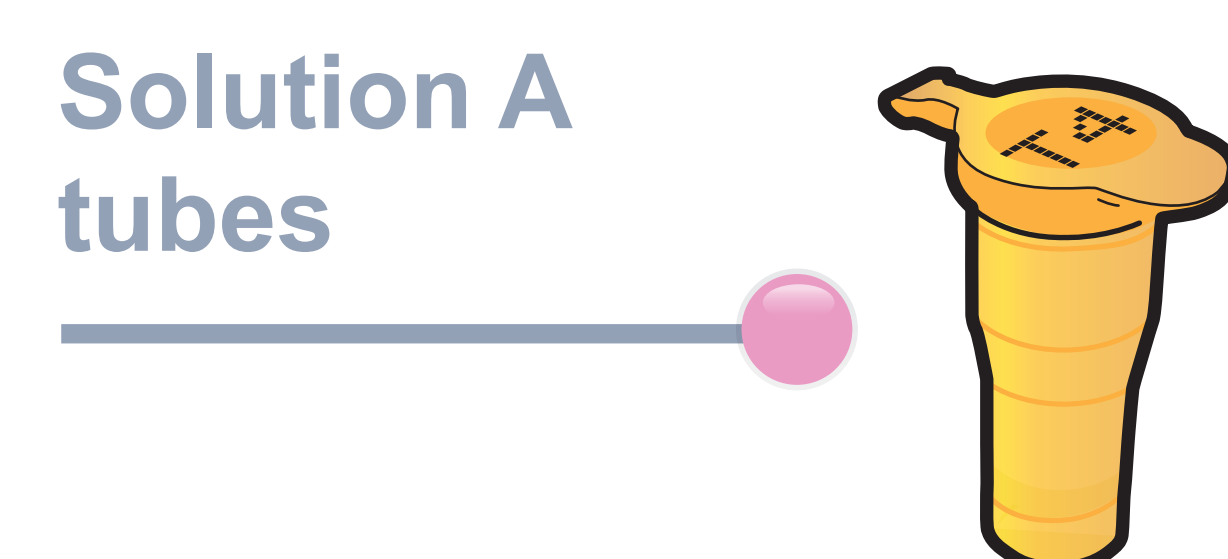
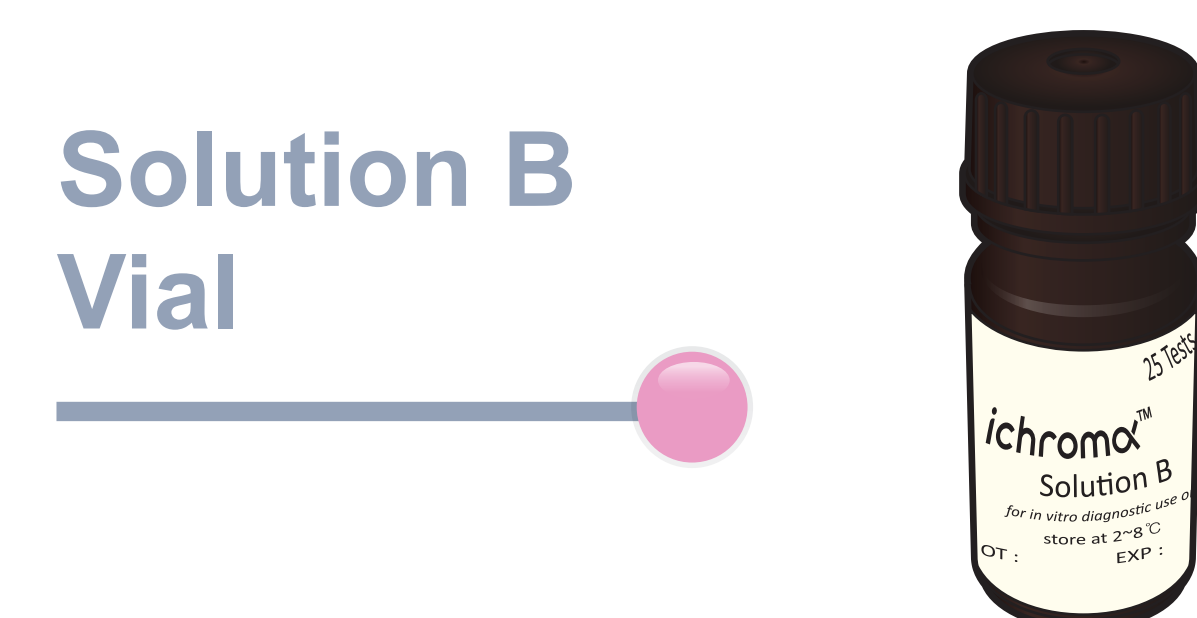
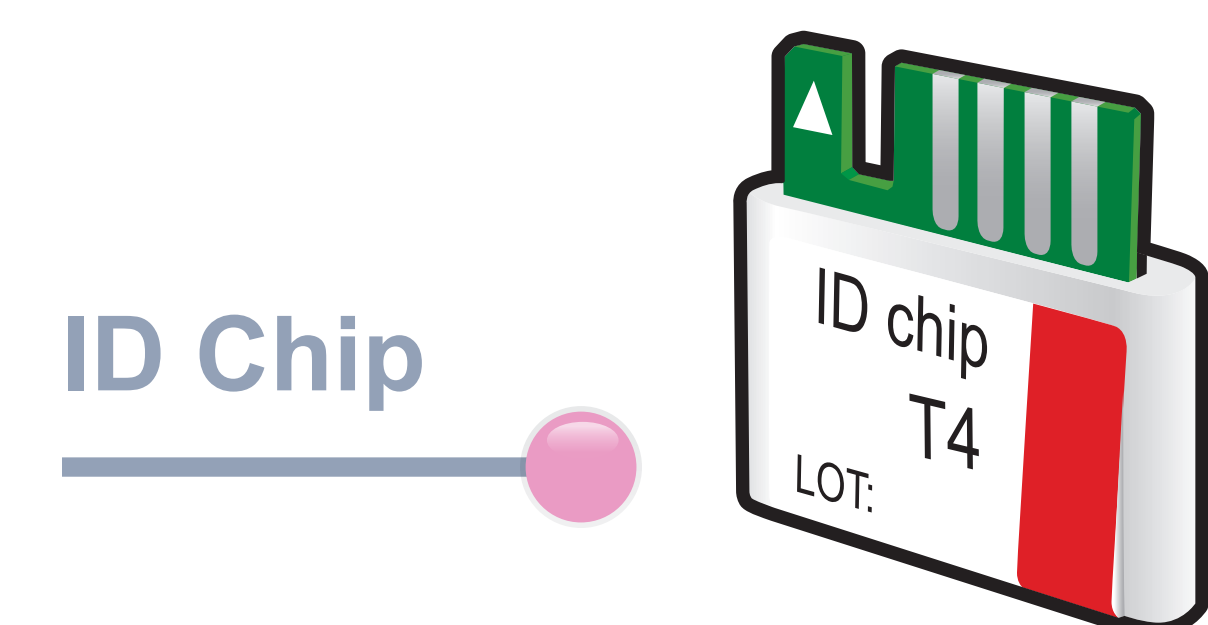


ichromα™ T4

Test Setup

Test Components



ichromα™ Reader

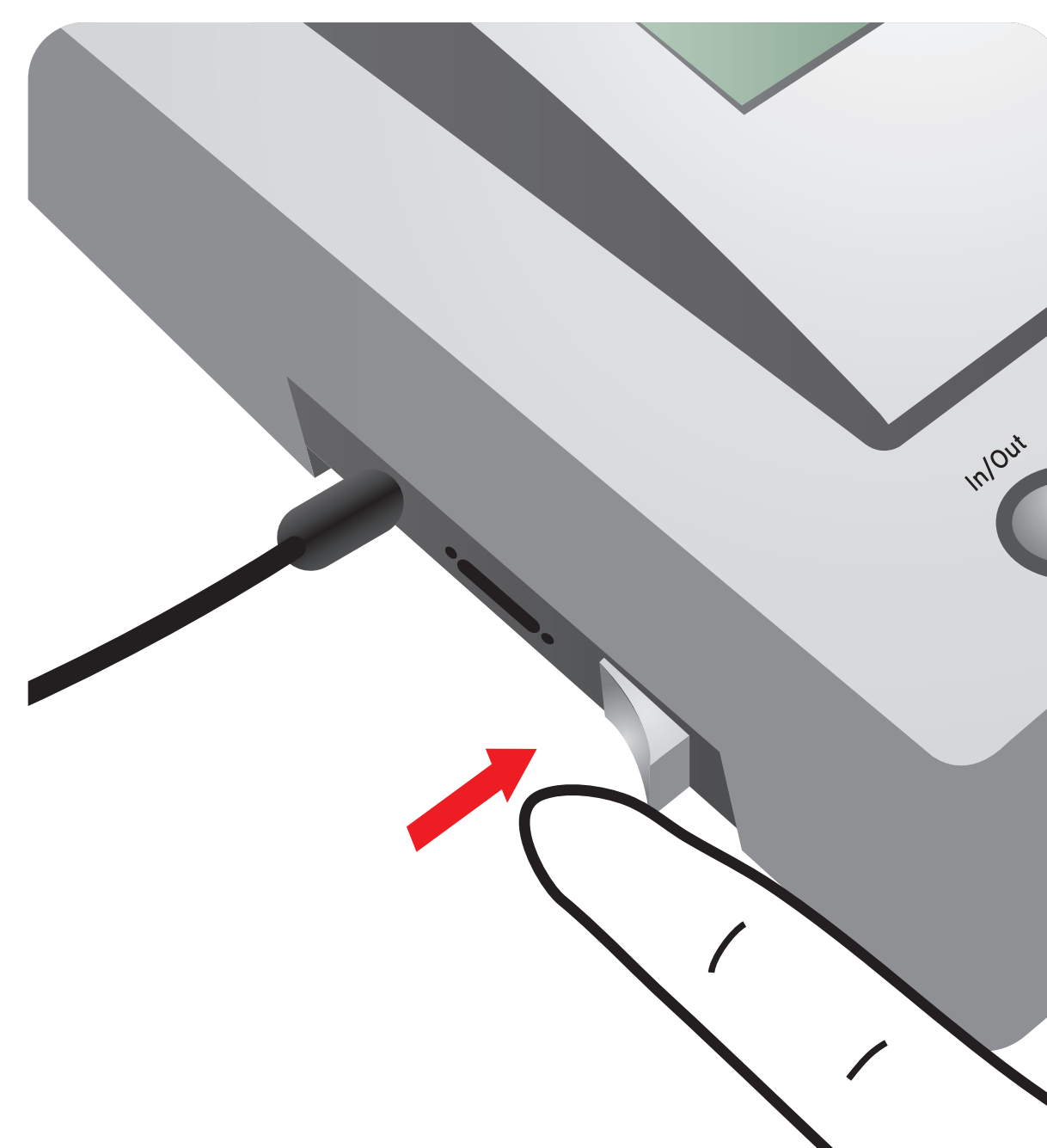


Important

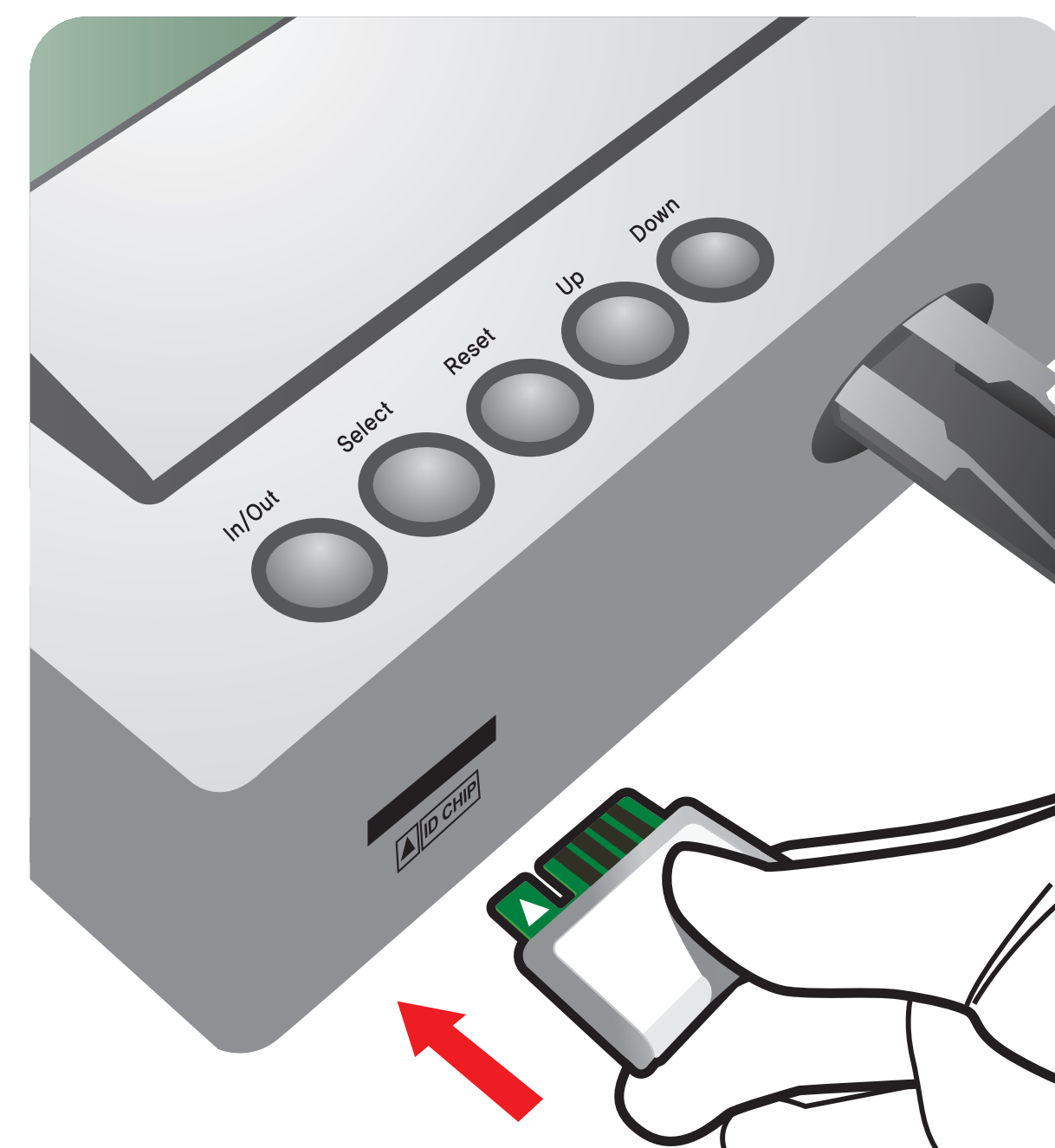
Allow 'solution A, B' to attain room temperature at least for 30 minutes before performing the test

Make sure that lot number of the 'ID Chip' is exactly same as the lot number of 'Test Cartridge' and Detection Buffer Tube

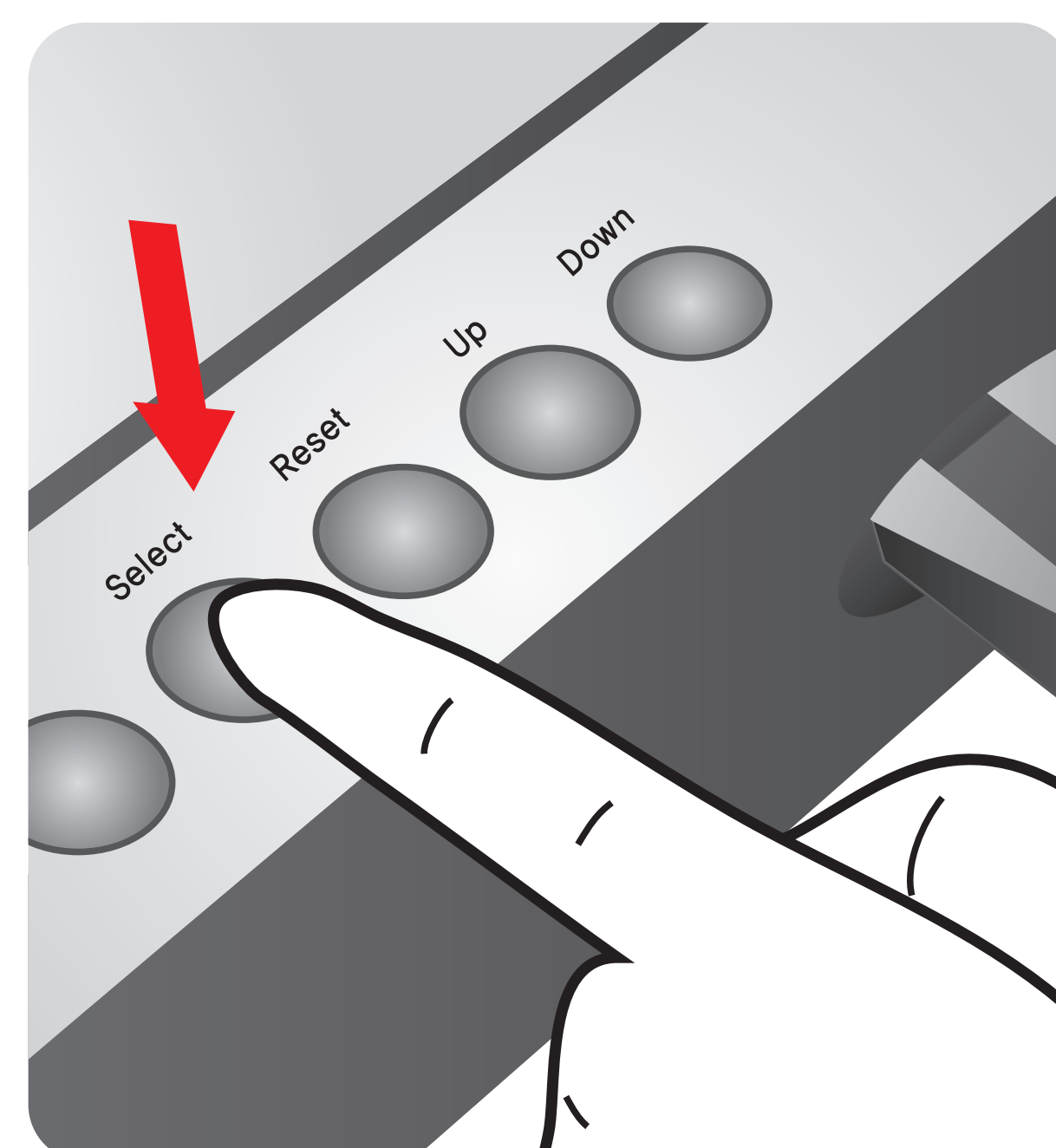
1 Turn the power switch 'On'



2 Insert ID Chip

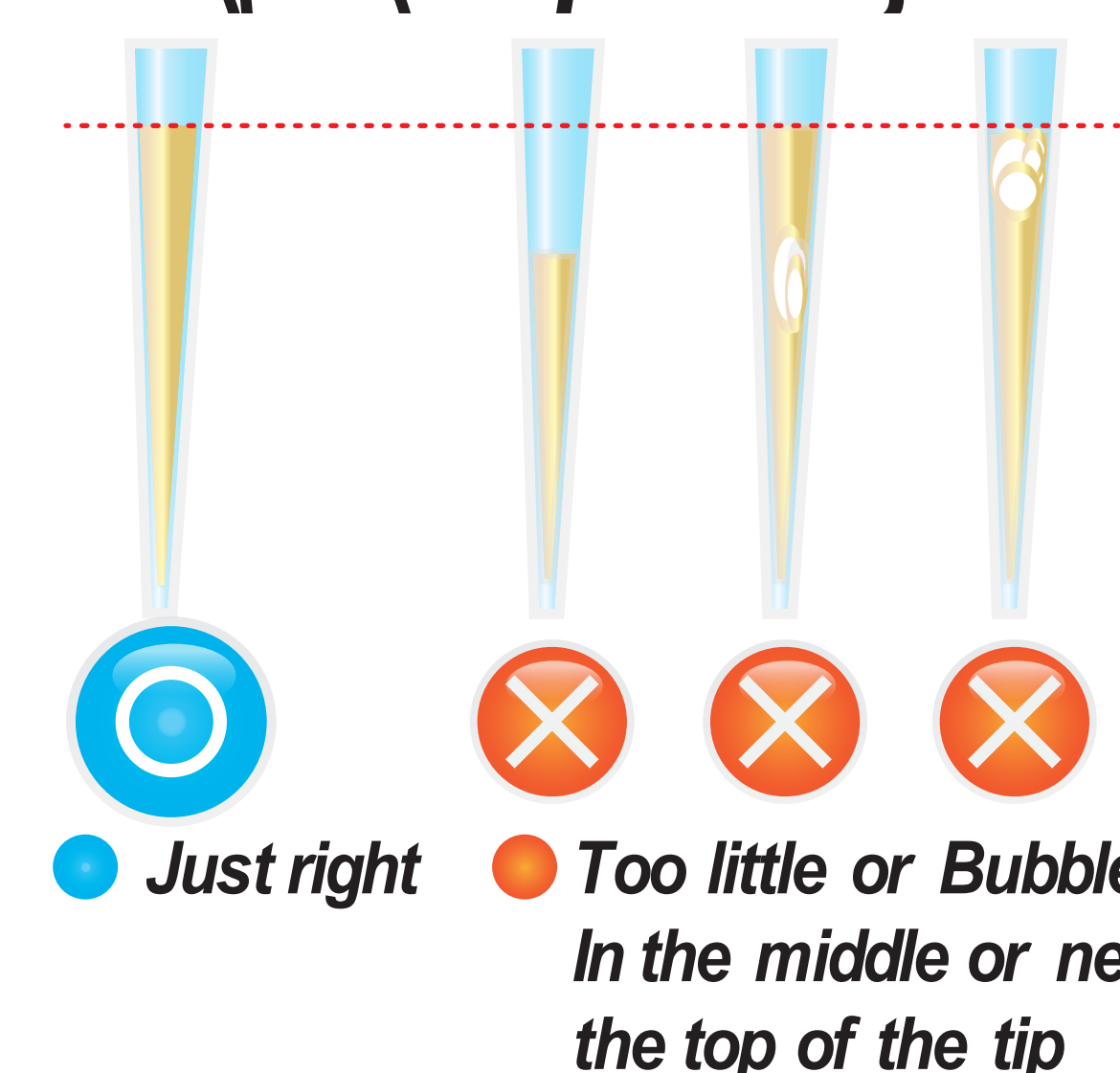


3 Press 'Select'



Test Procedure

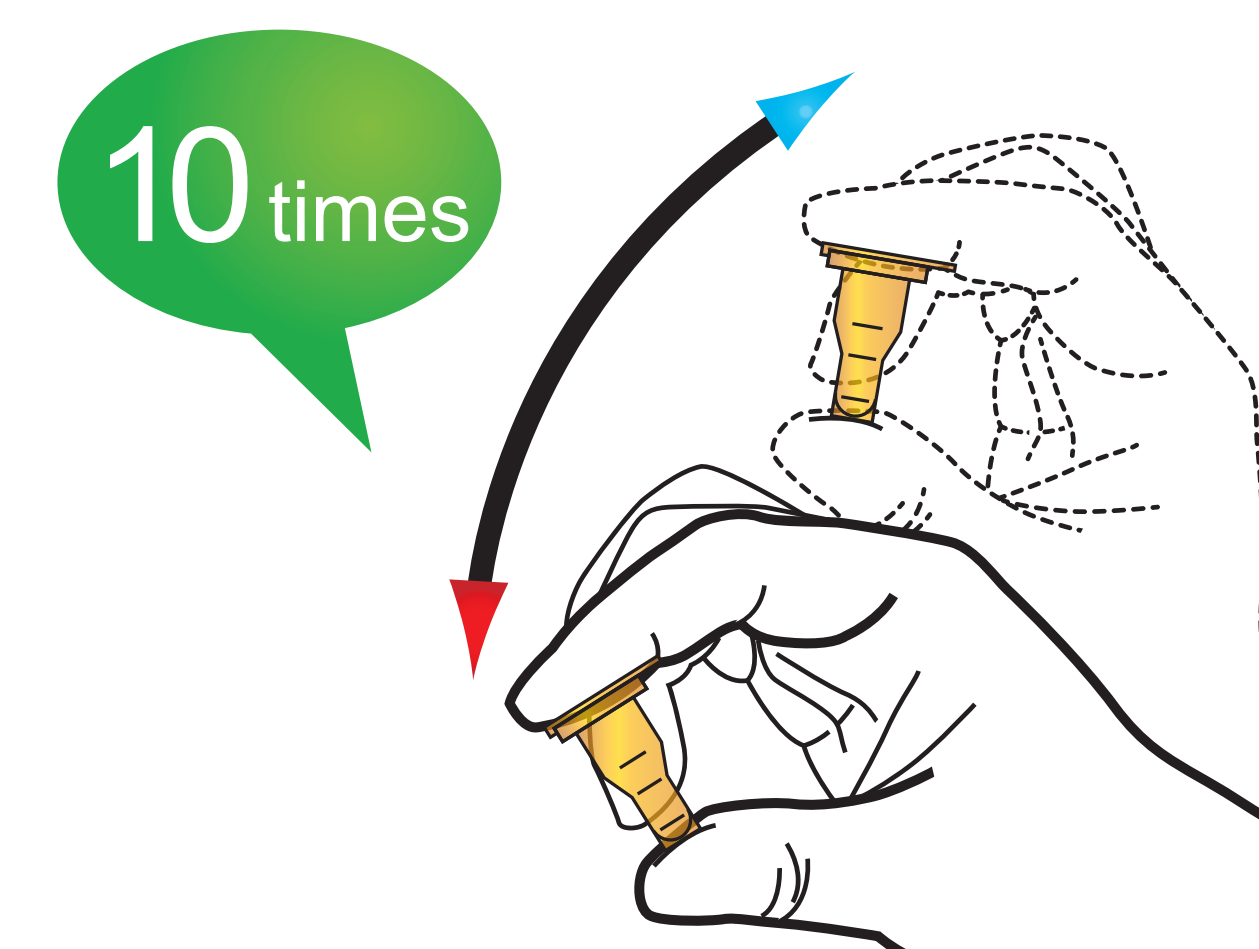
1 Draw 75 μ L (Serum / Plasma / Control)



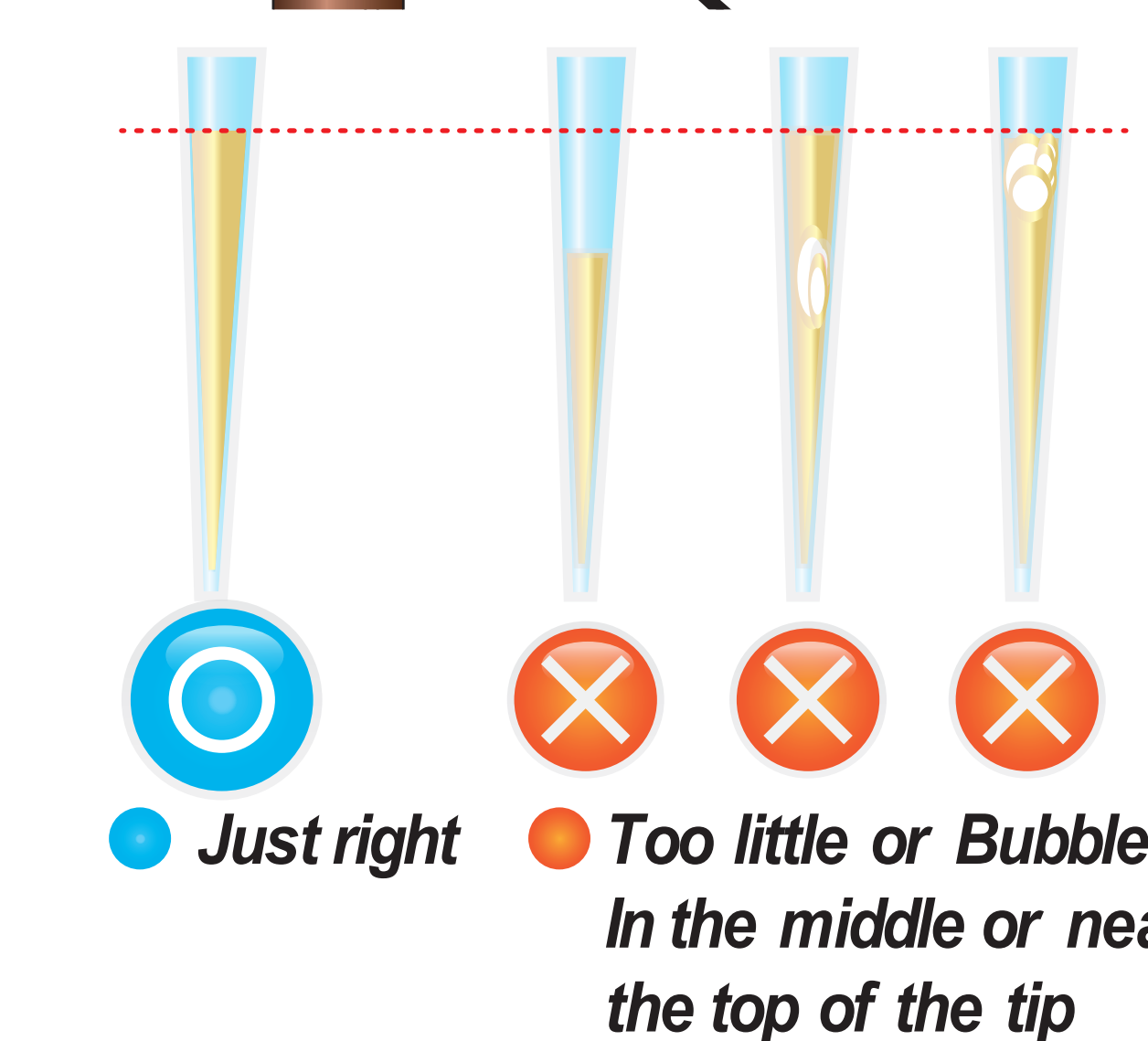
2 Add it into solution A tube



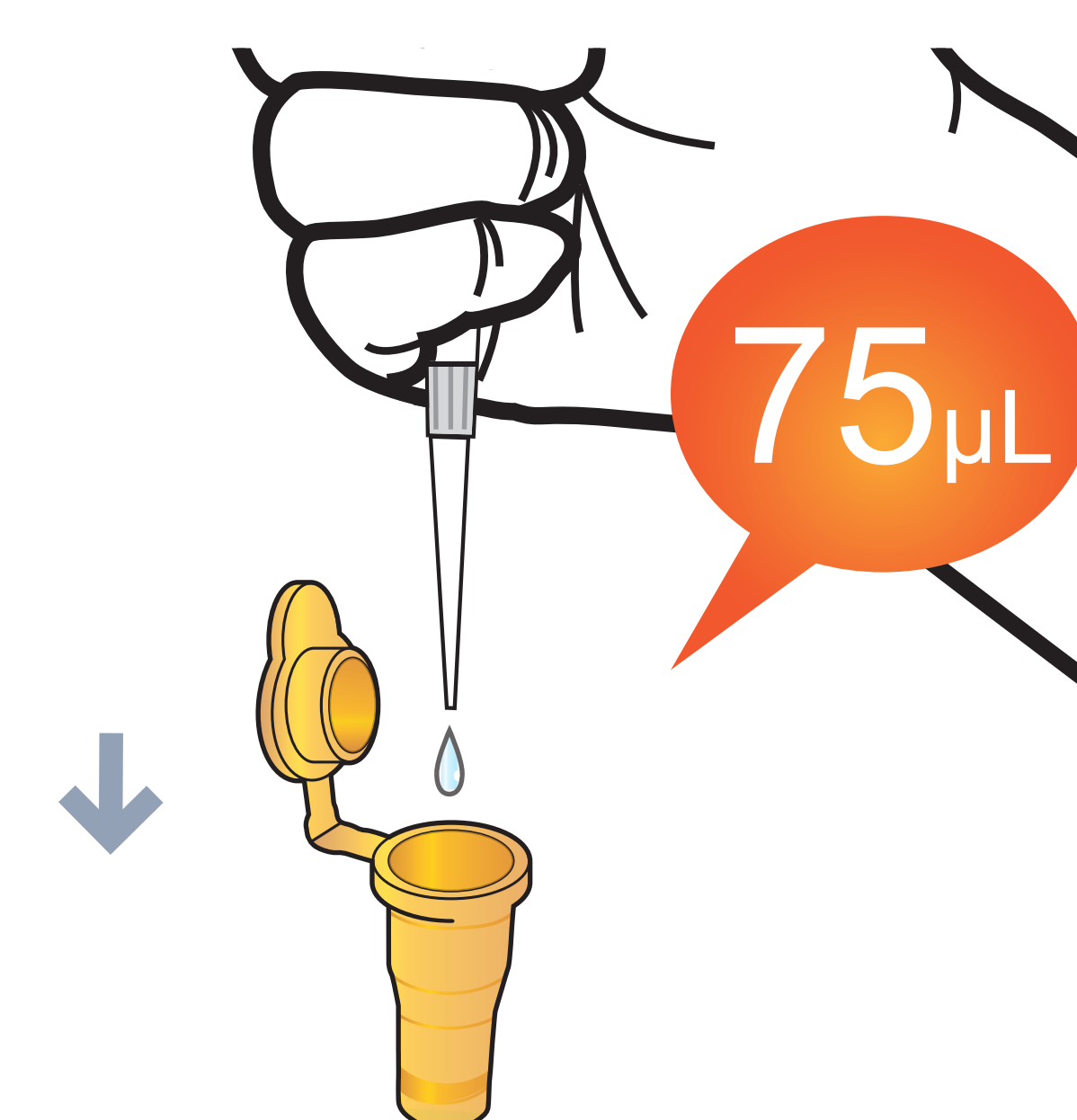
3 Shake the solution A tube



4 Draw 75 μ L (Solution B vial)



5 Add it into solution A tube



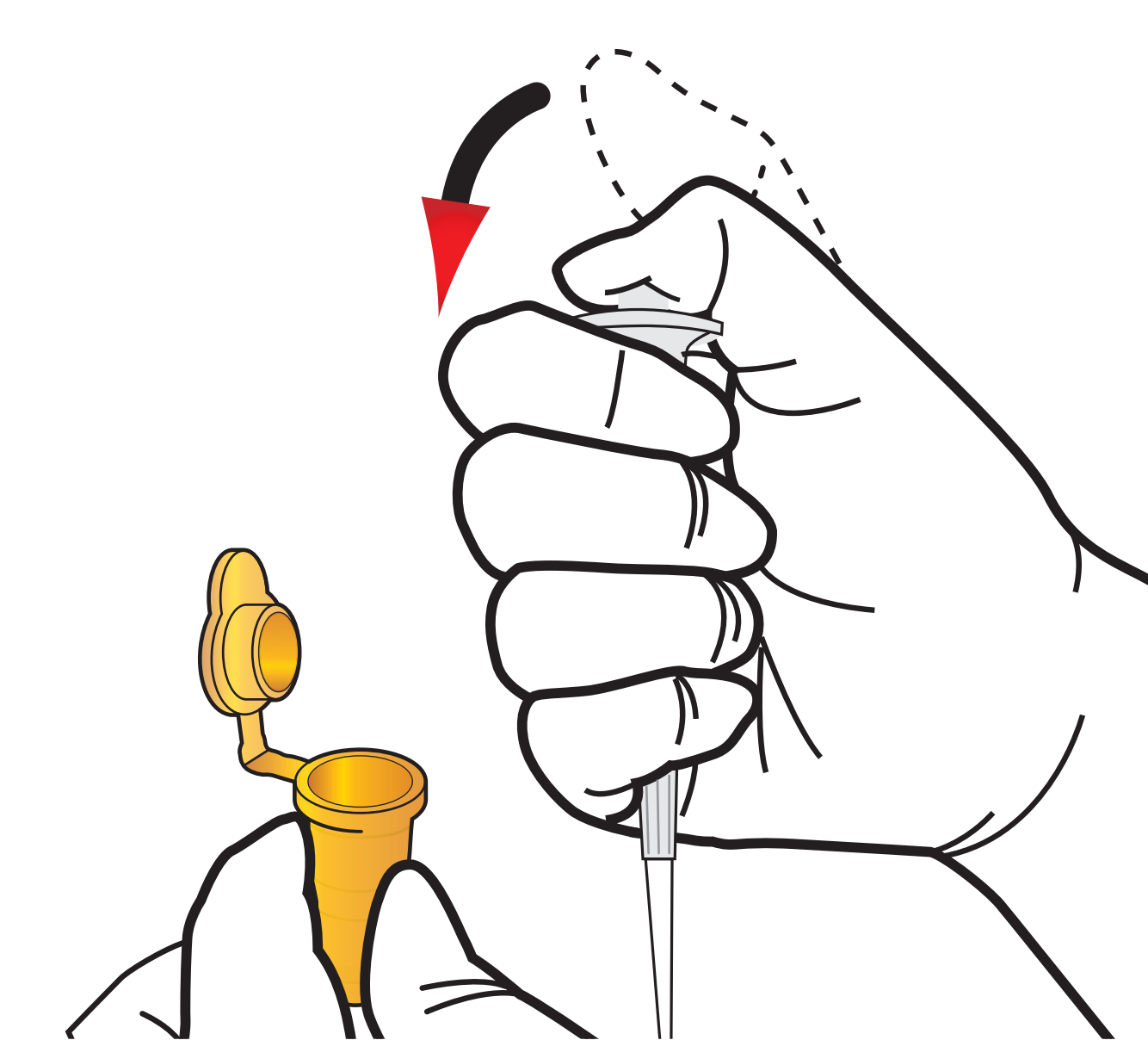
6 Shake the solution A tube



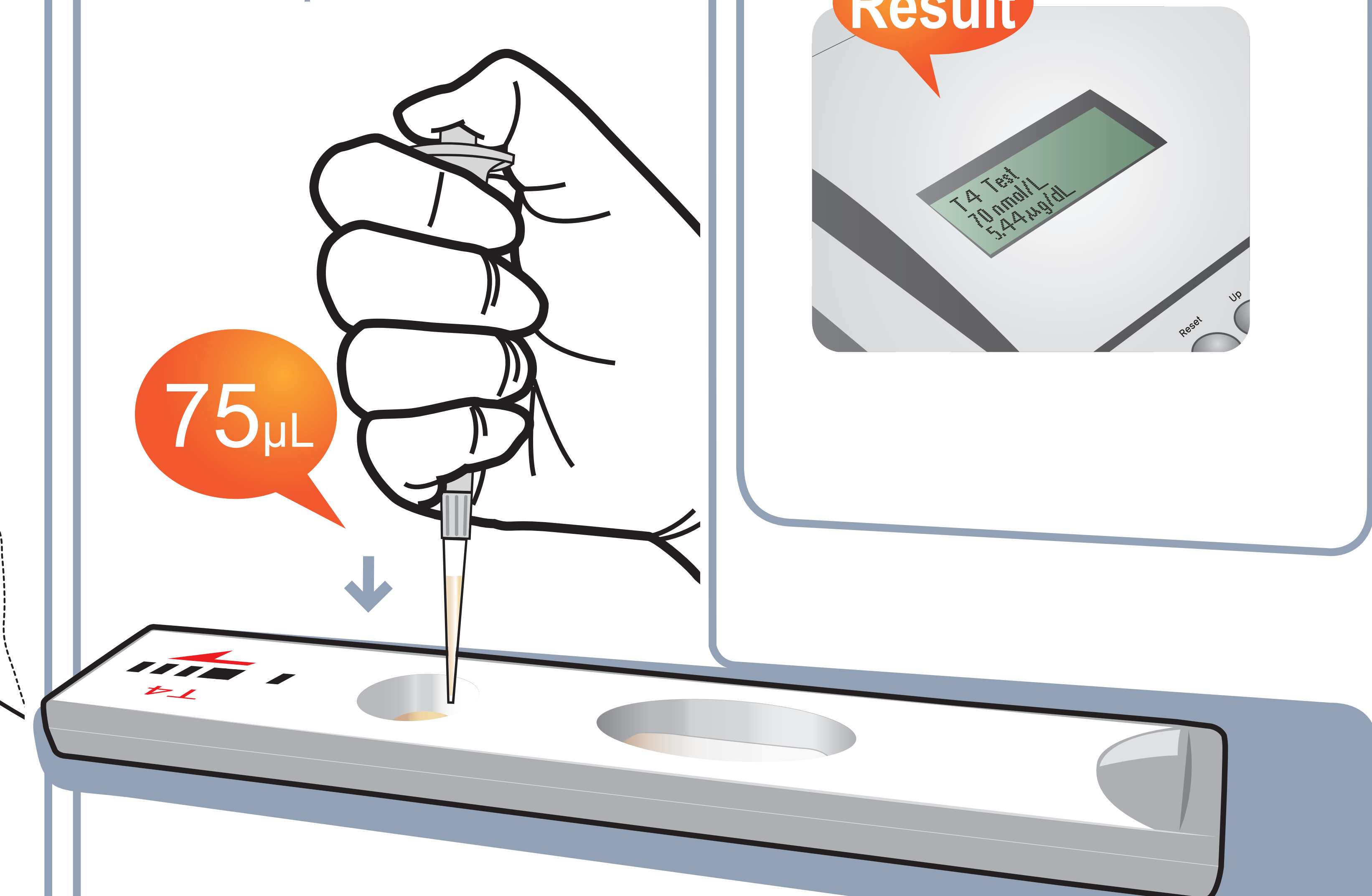
7 Stand for 8 minutes



8 Draw the sample mixture



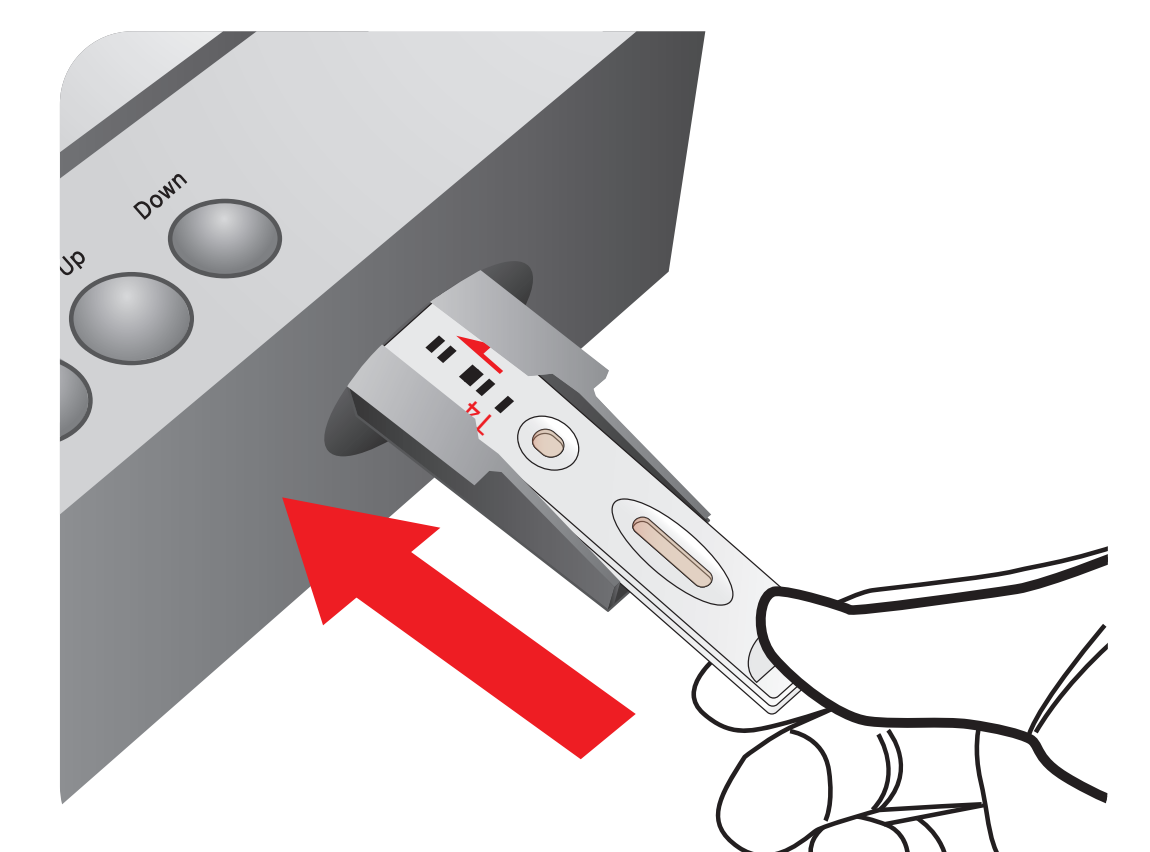
9 Load the sample mixture



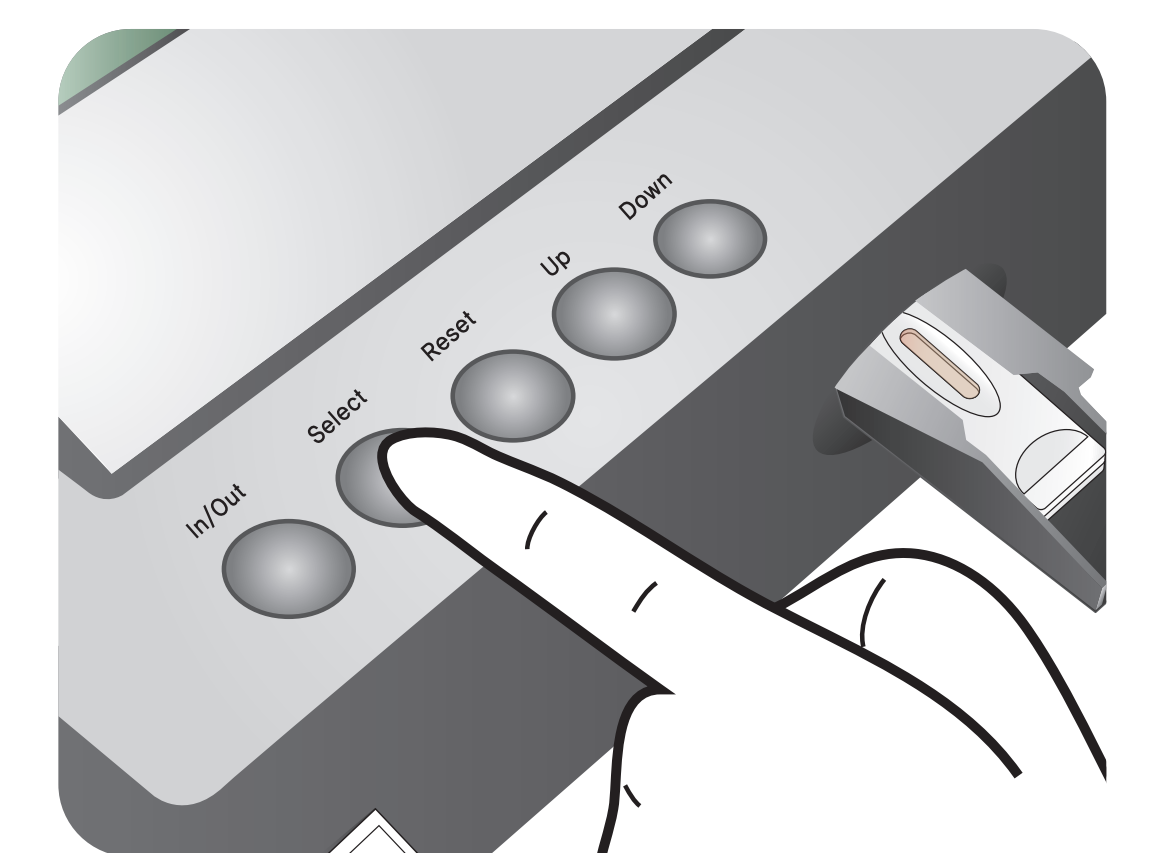
10 Waiting 8 minutes

Maintain 25°C degrees

11 Insert the test cartridge



12 Press 'Select'



13 Read the test result

