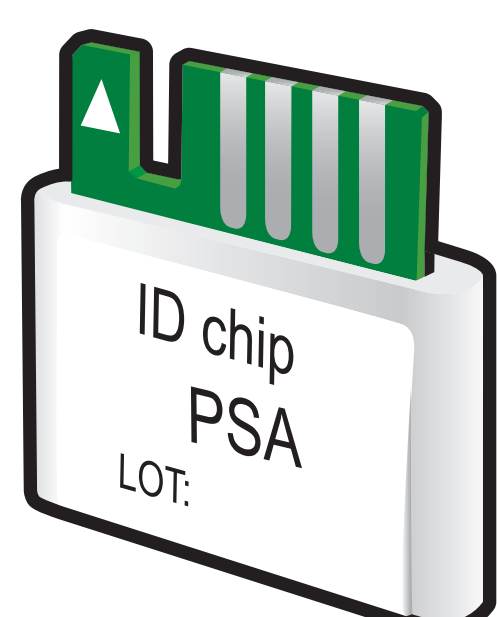


ichromα™ PSA

Test Setup

Test Components

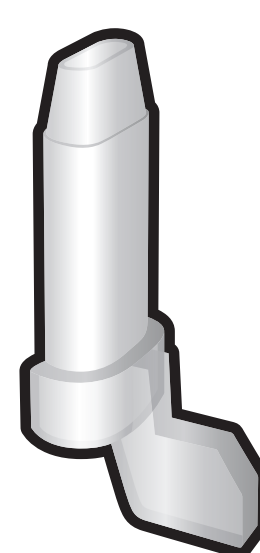
ID Chip



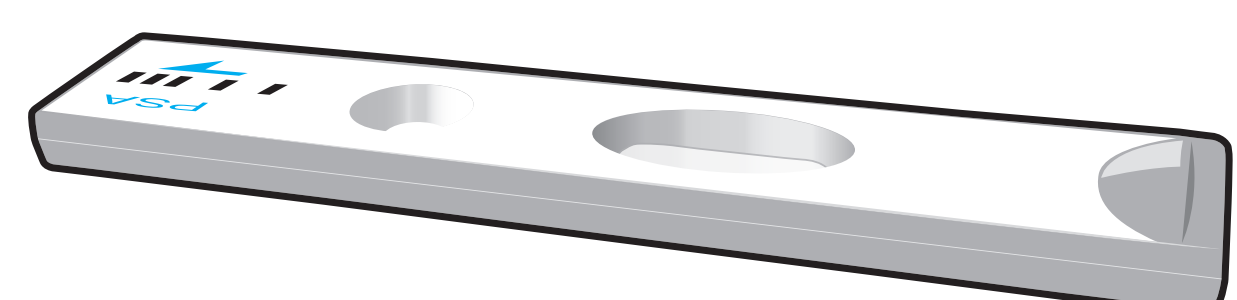
Detection Buffer Tube



Capillary Tube



Test Cartridge



ichromα™ Reader

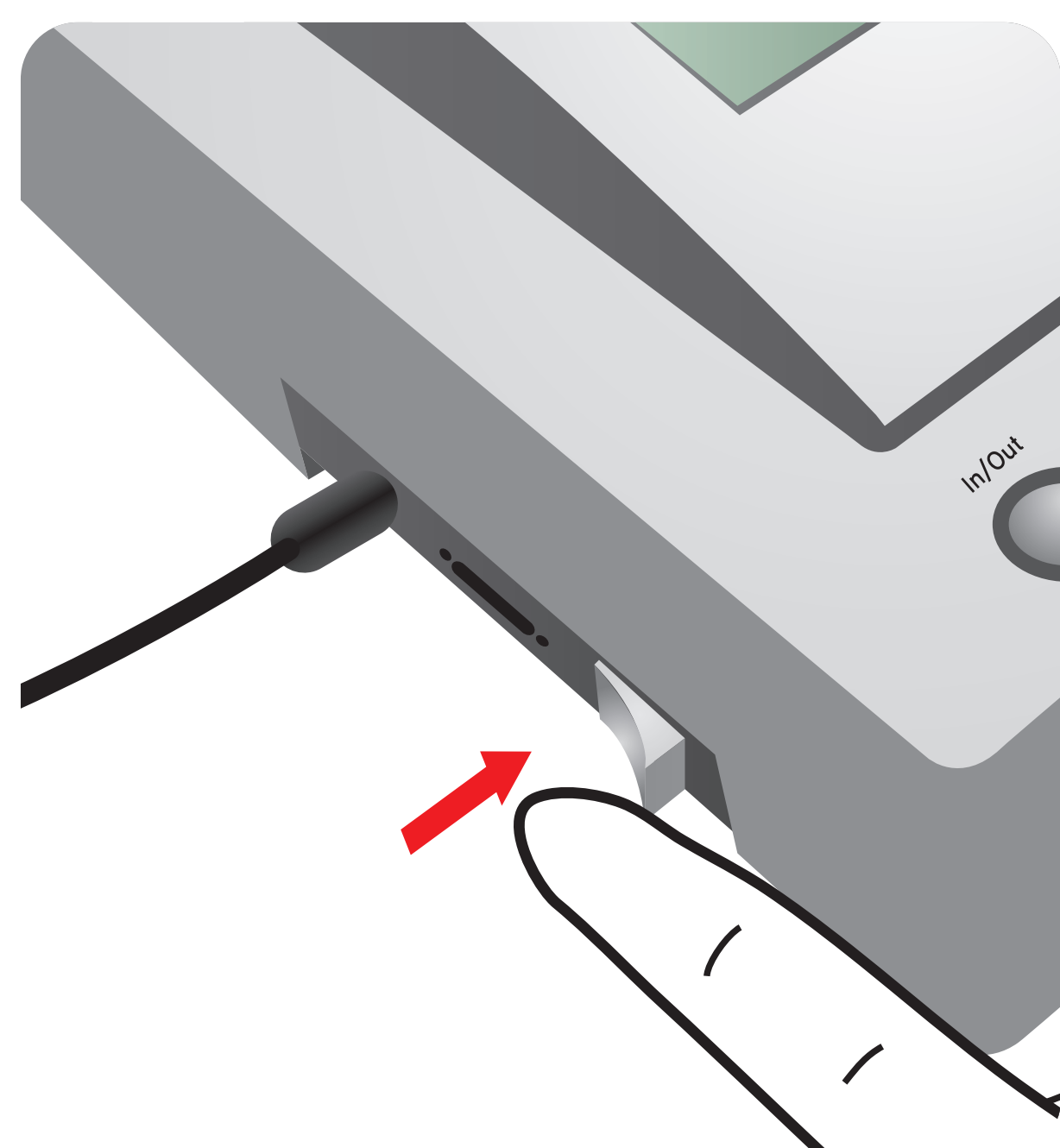


Important

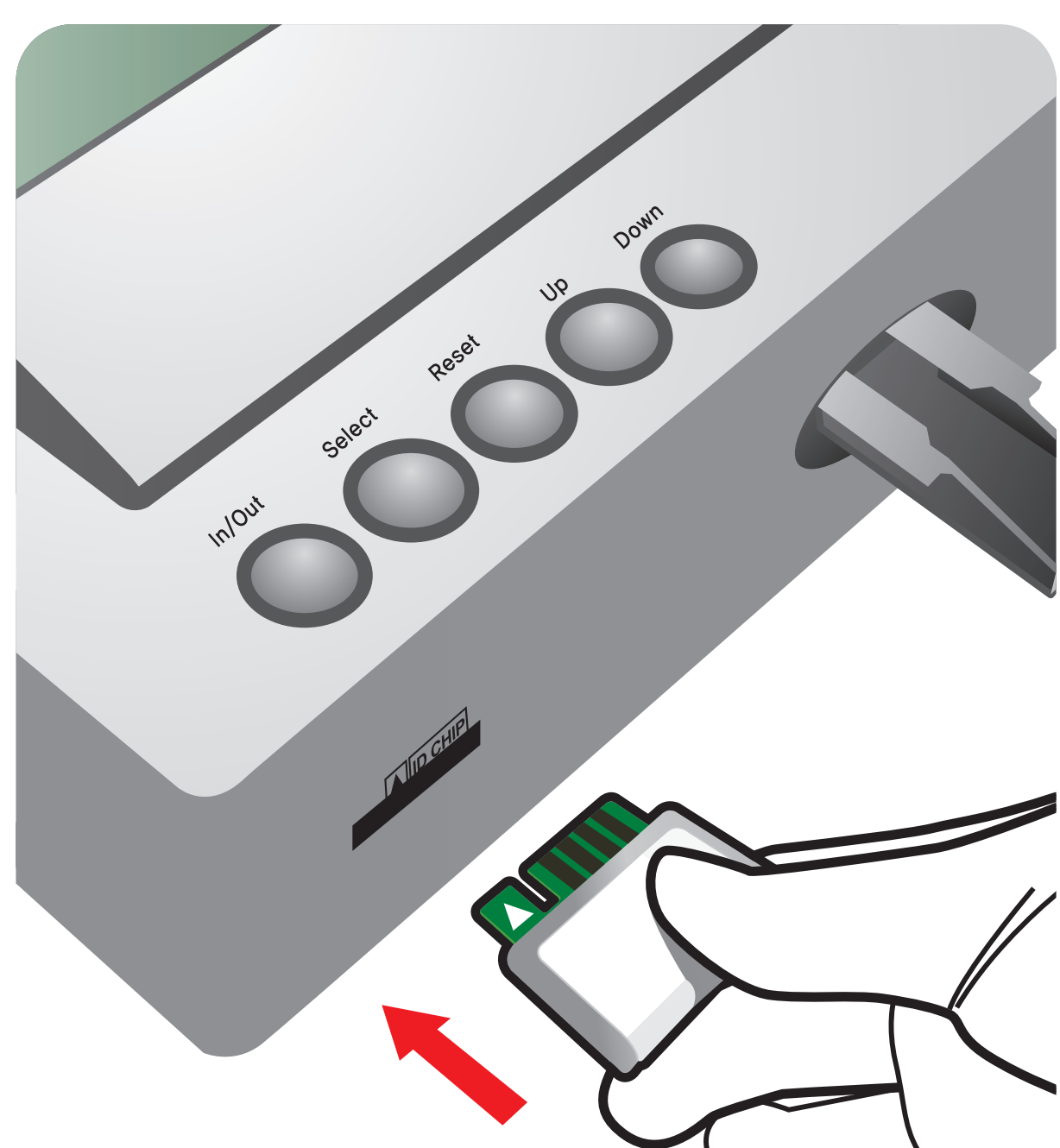
Allow 'Detection Buffer Tube' to attain room temperature at least for 30 minutes before performing the test

Make sure that lot number of the 'ID Chip' is exactly same as the lot number of 'Test Cartridge' and 'Detection Buffer Tube'

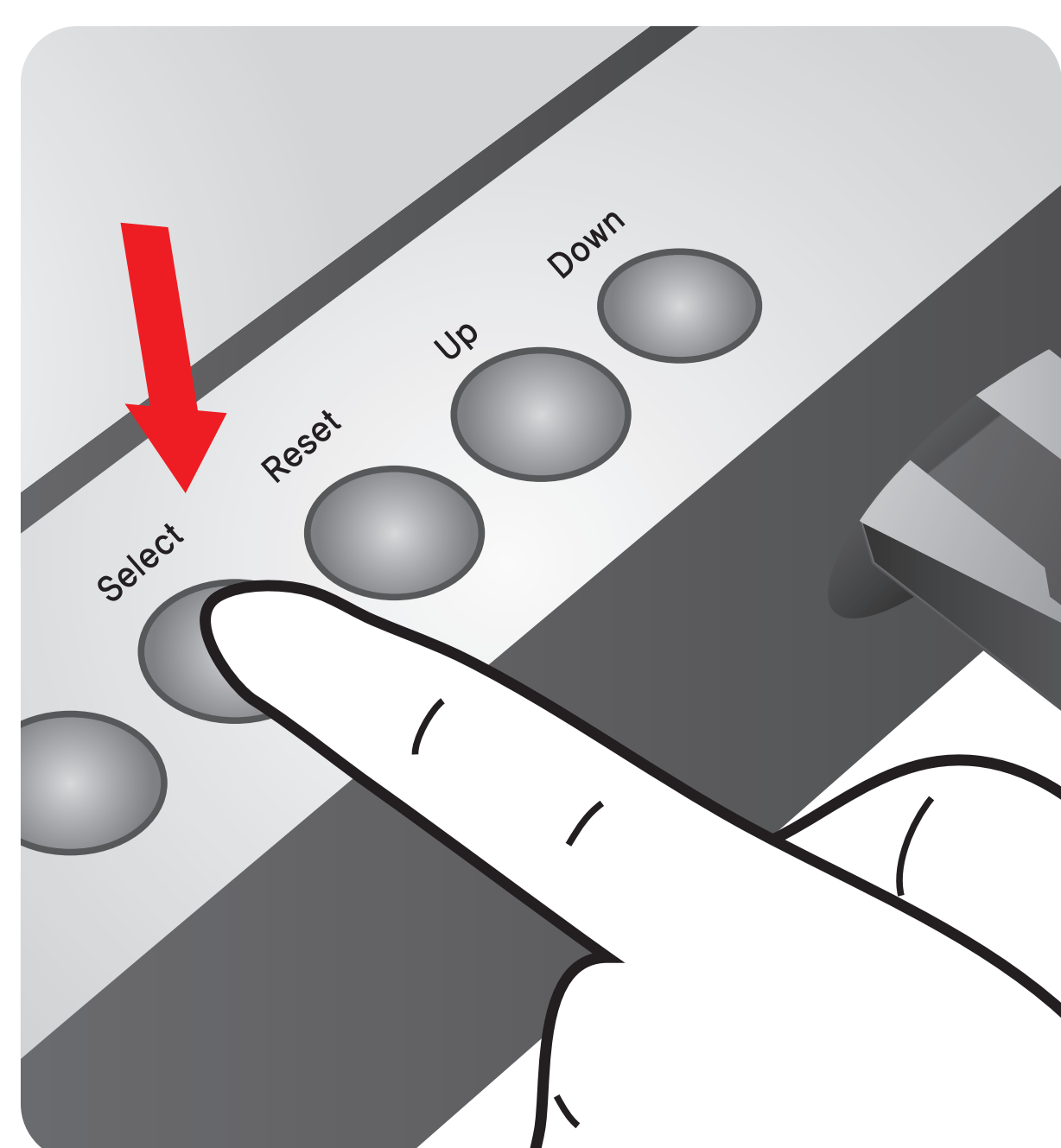
1 Turn the power switch 'On'



2 Insert ID Chip



3 Press 'Select'



Test Procedure

In case of Serum, Plasma, Control

1 Draw Serum, Plasma, Control

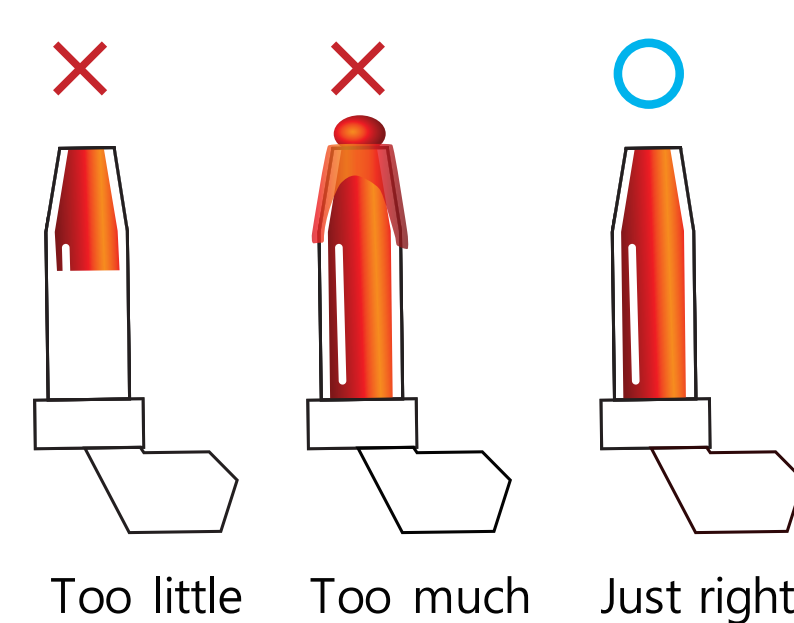
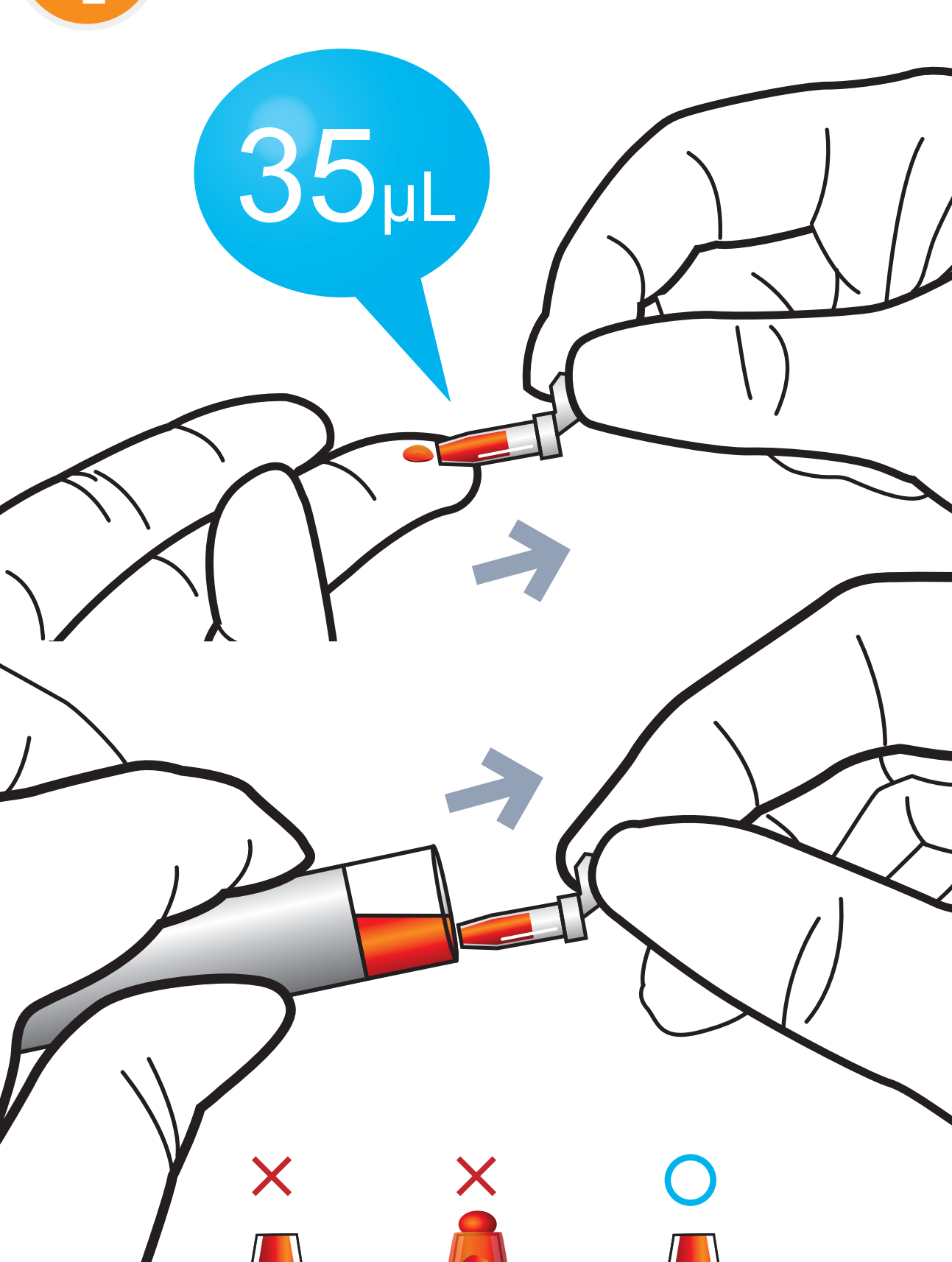


2 Add it into detection buffer tube



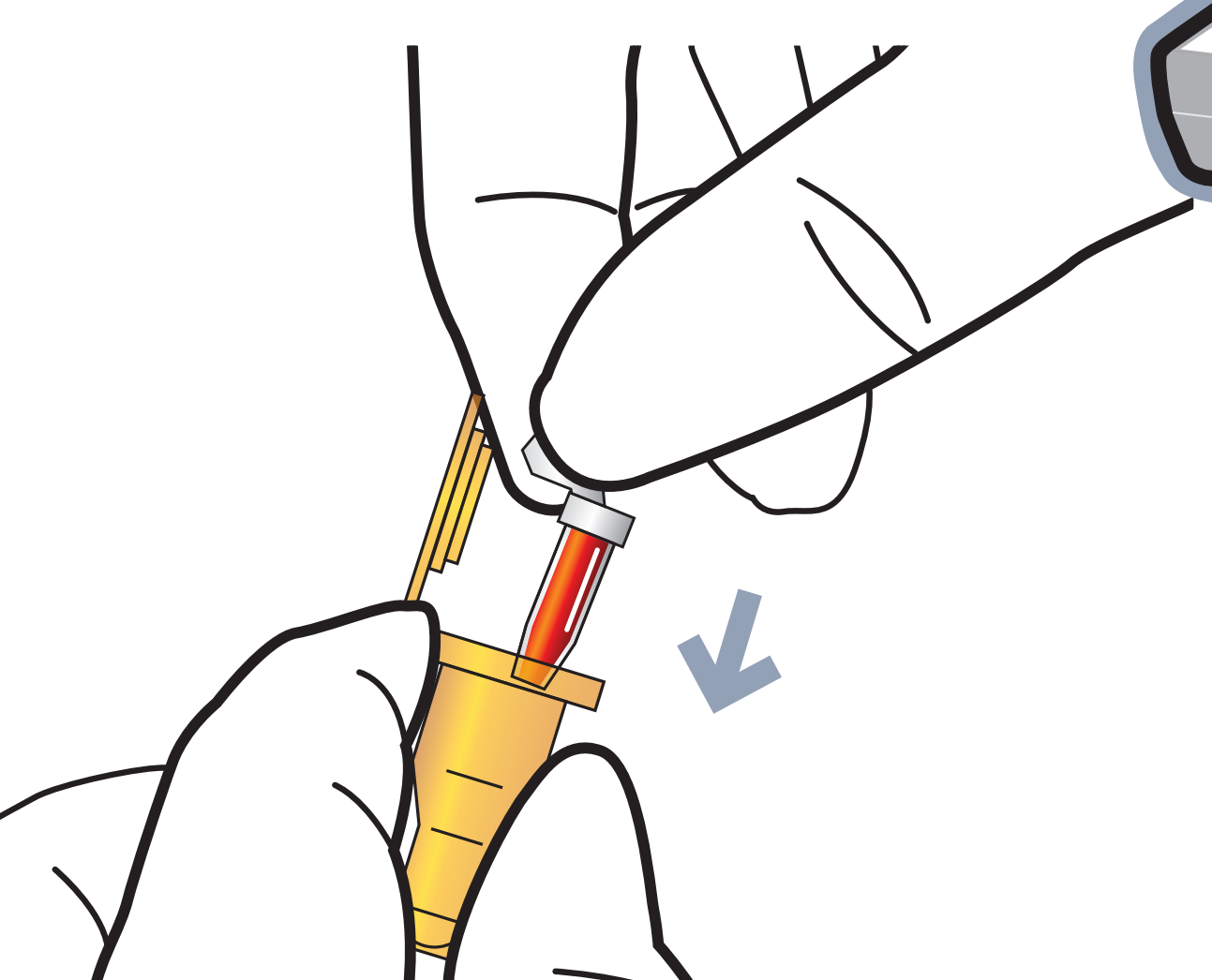
In case of Whole blood

1 Draw whole blood

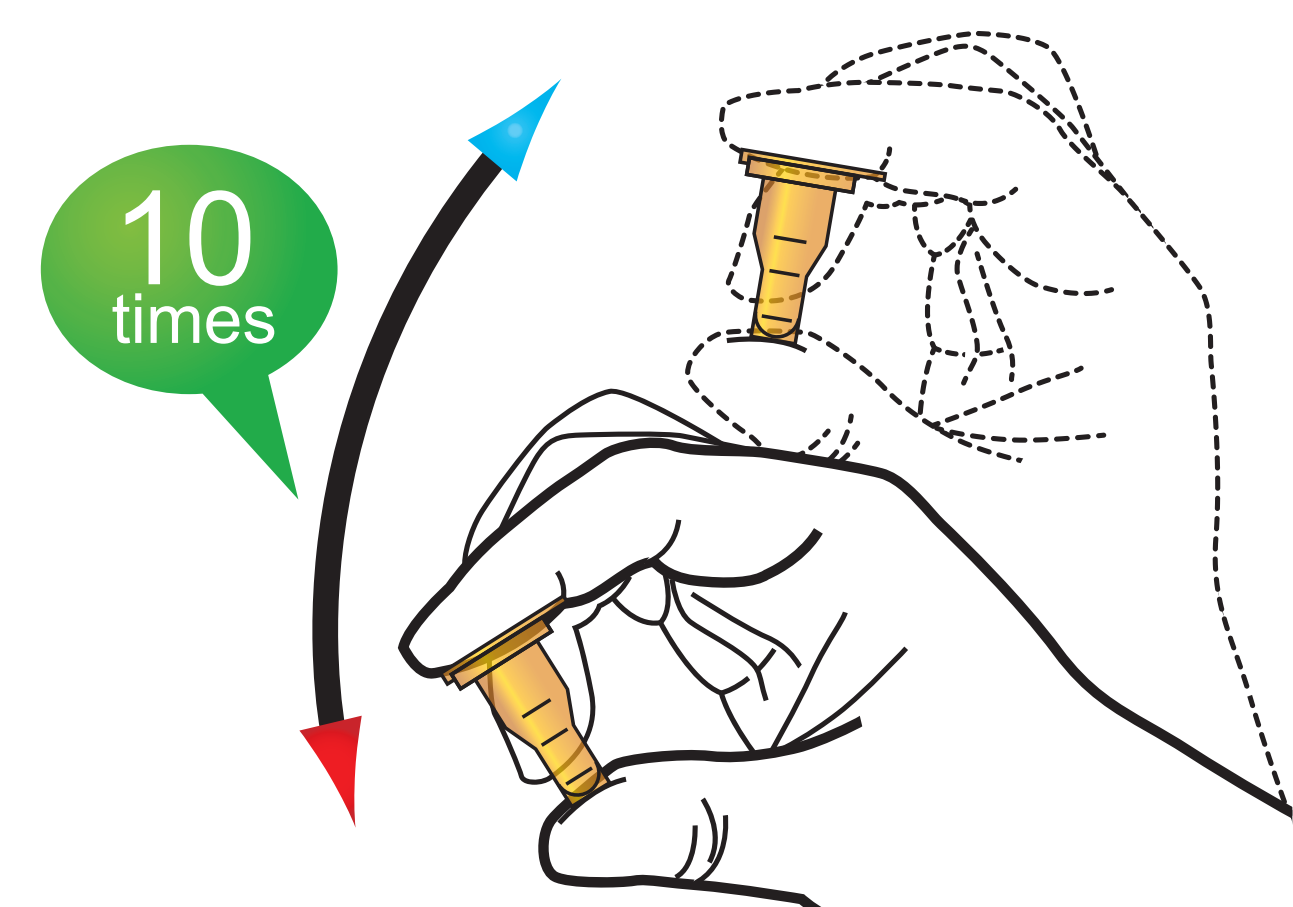


Add more blood Wipe away excess

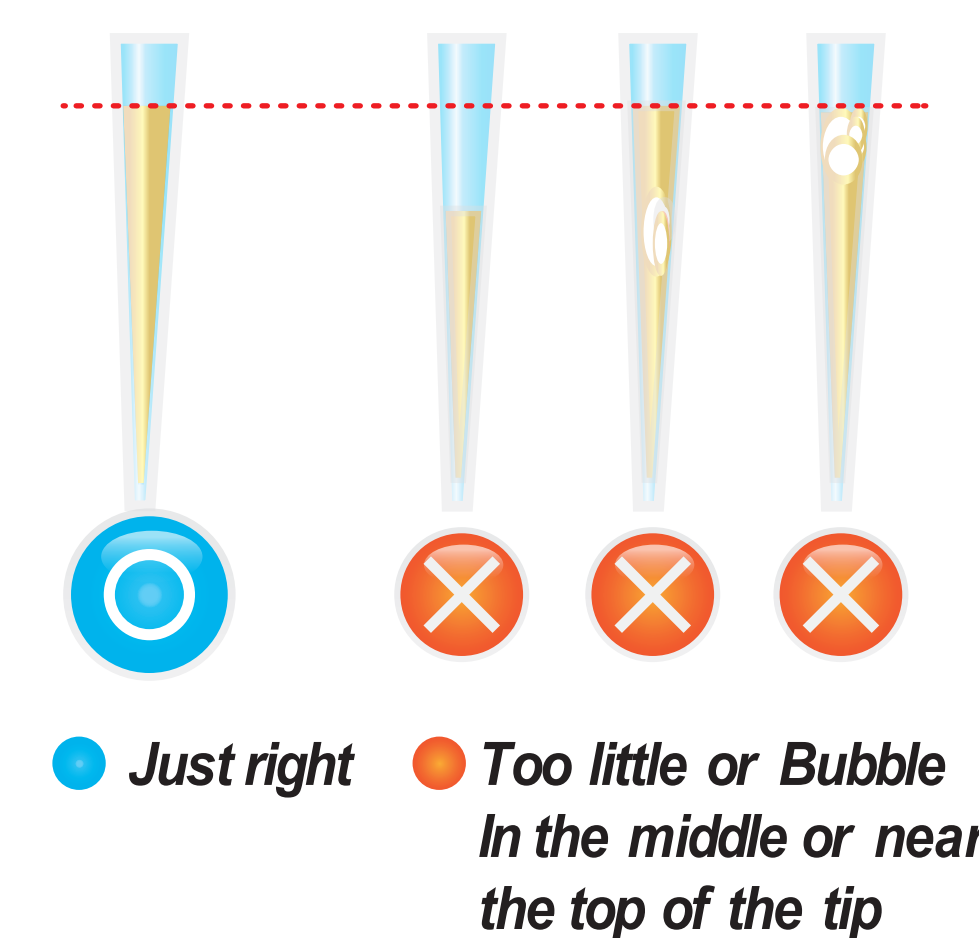
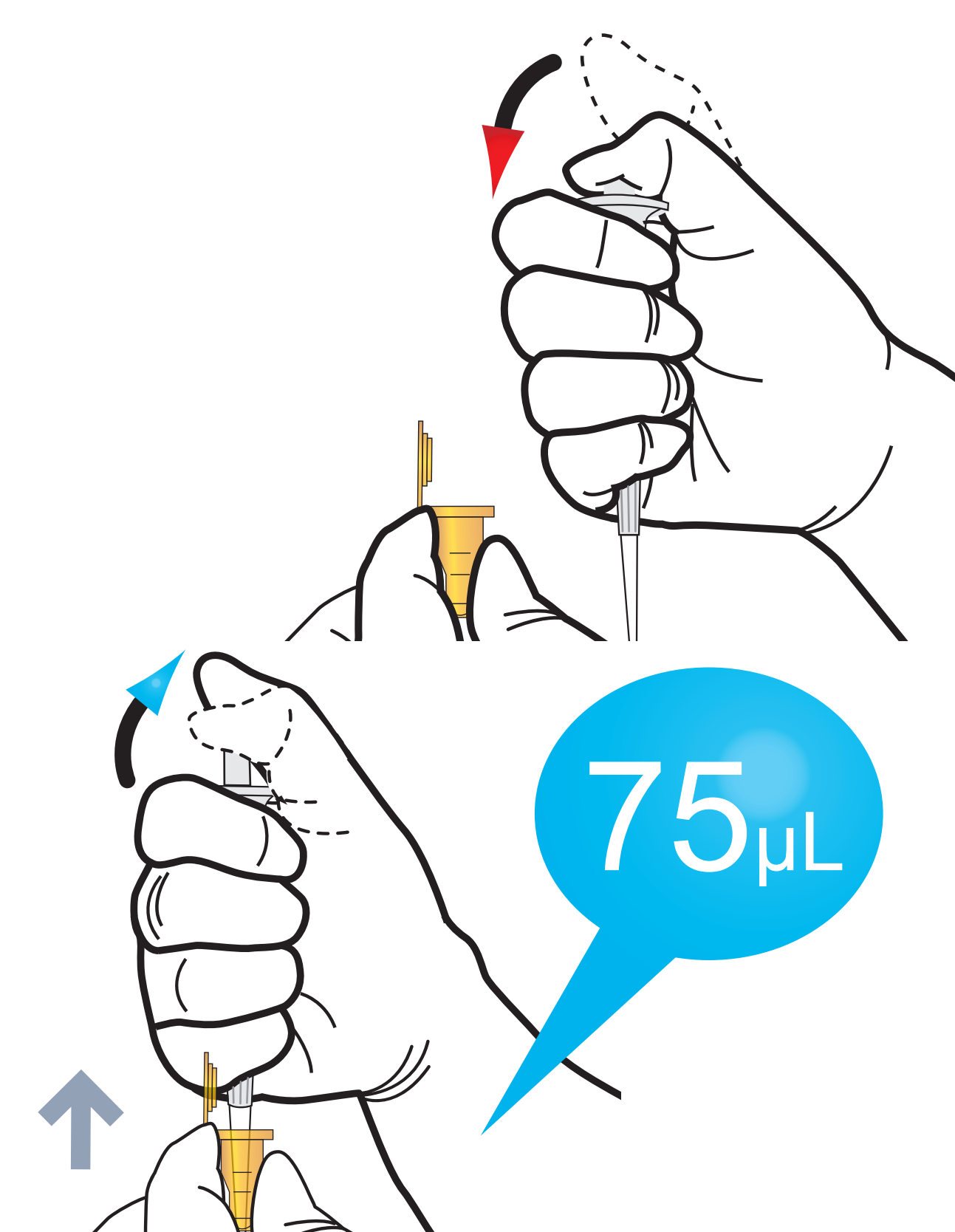
2 Put the Capillary



3 Shake the detection buffer tube



4 Draw the detection buffer tube

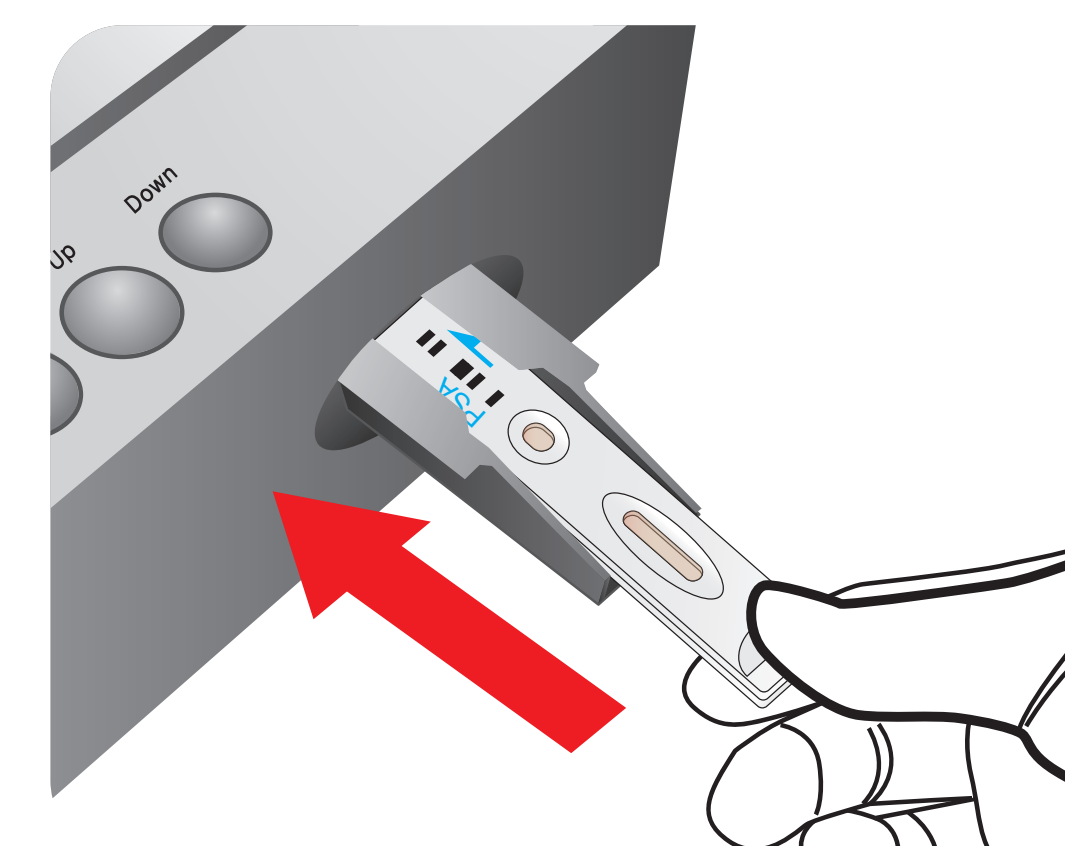


5 Load the sample mixture

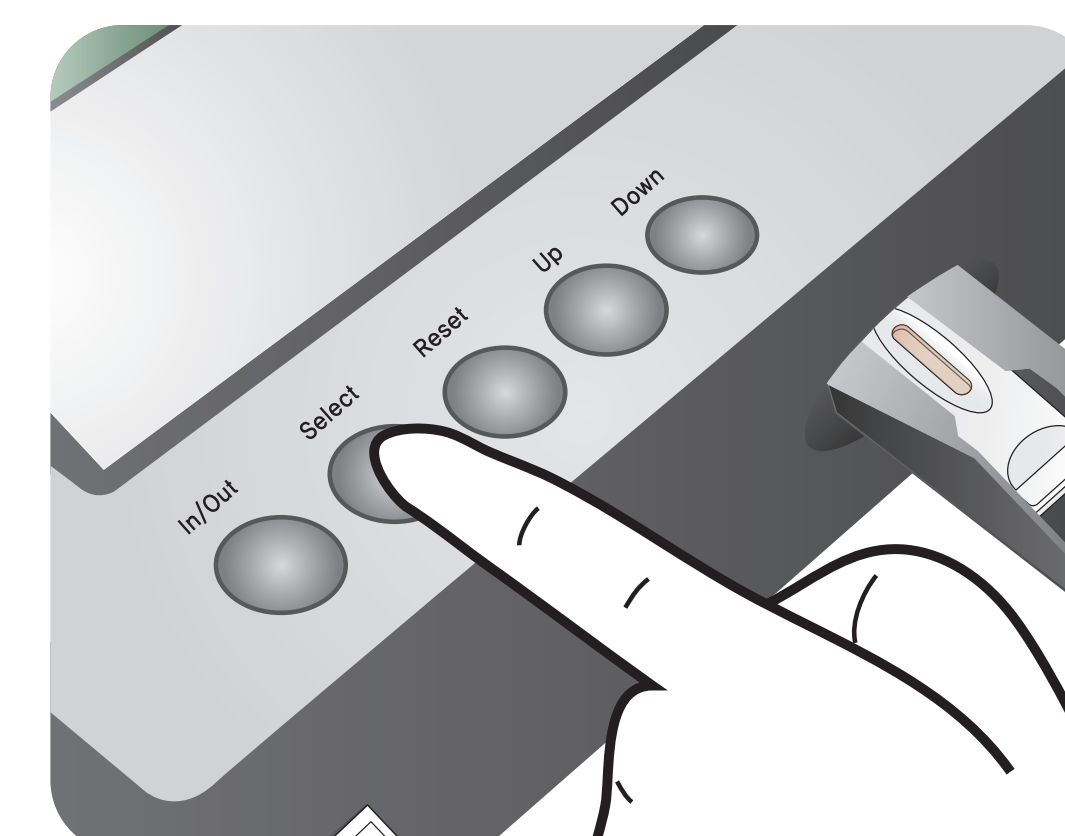


6 Waiting 15 minutes

7 Insert the test cartridge



8 Press 'Select'



9 Read the test result

