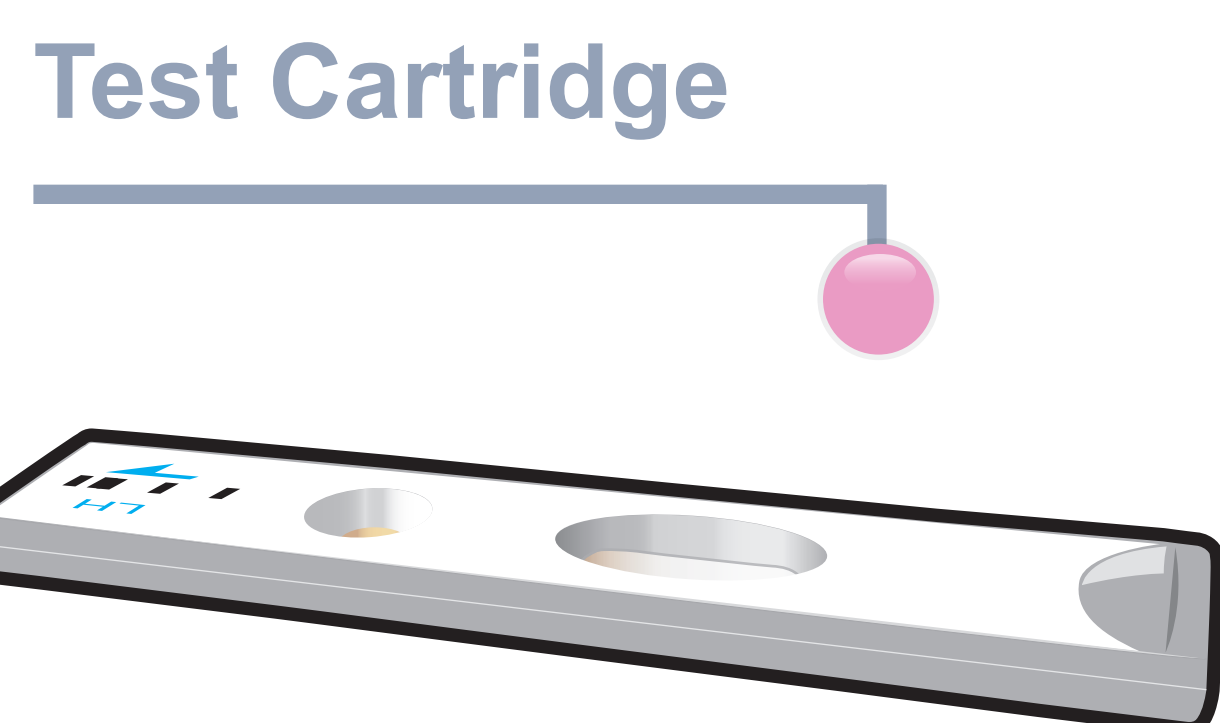
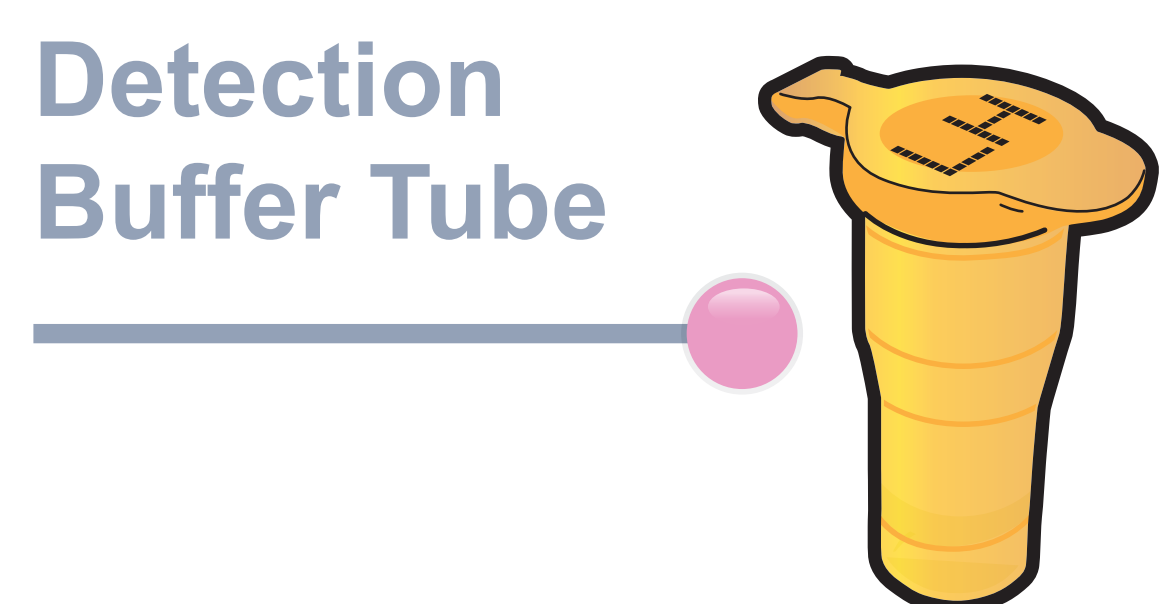
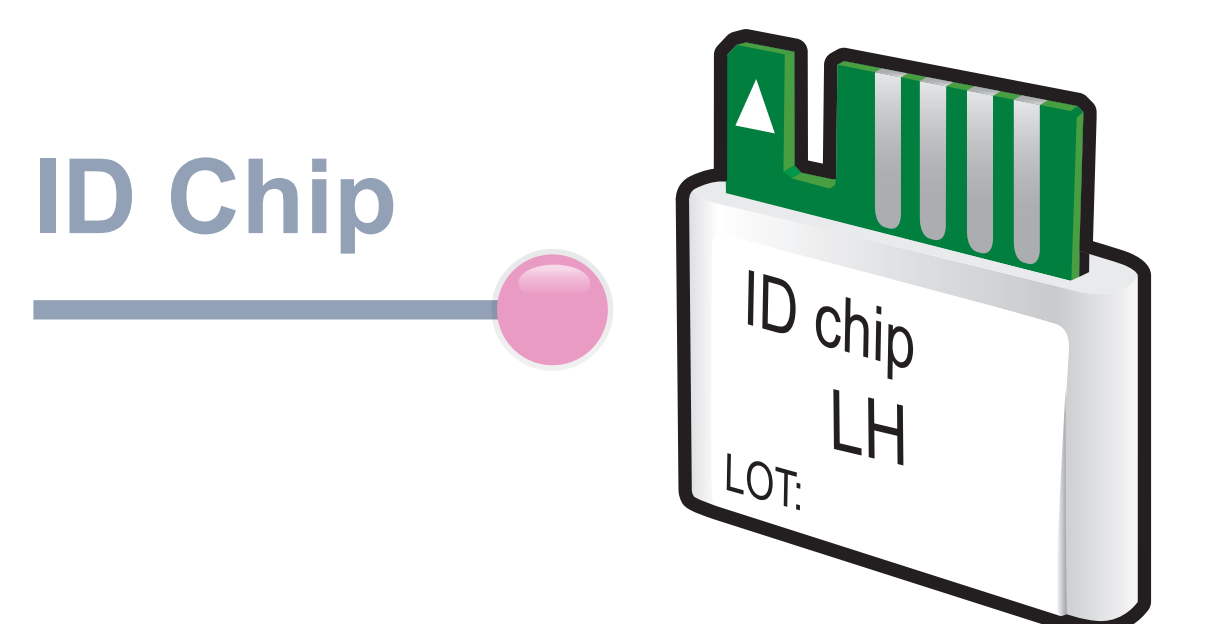


# ichromα™ LH

## Test Setup

### Test Components

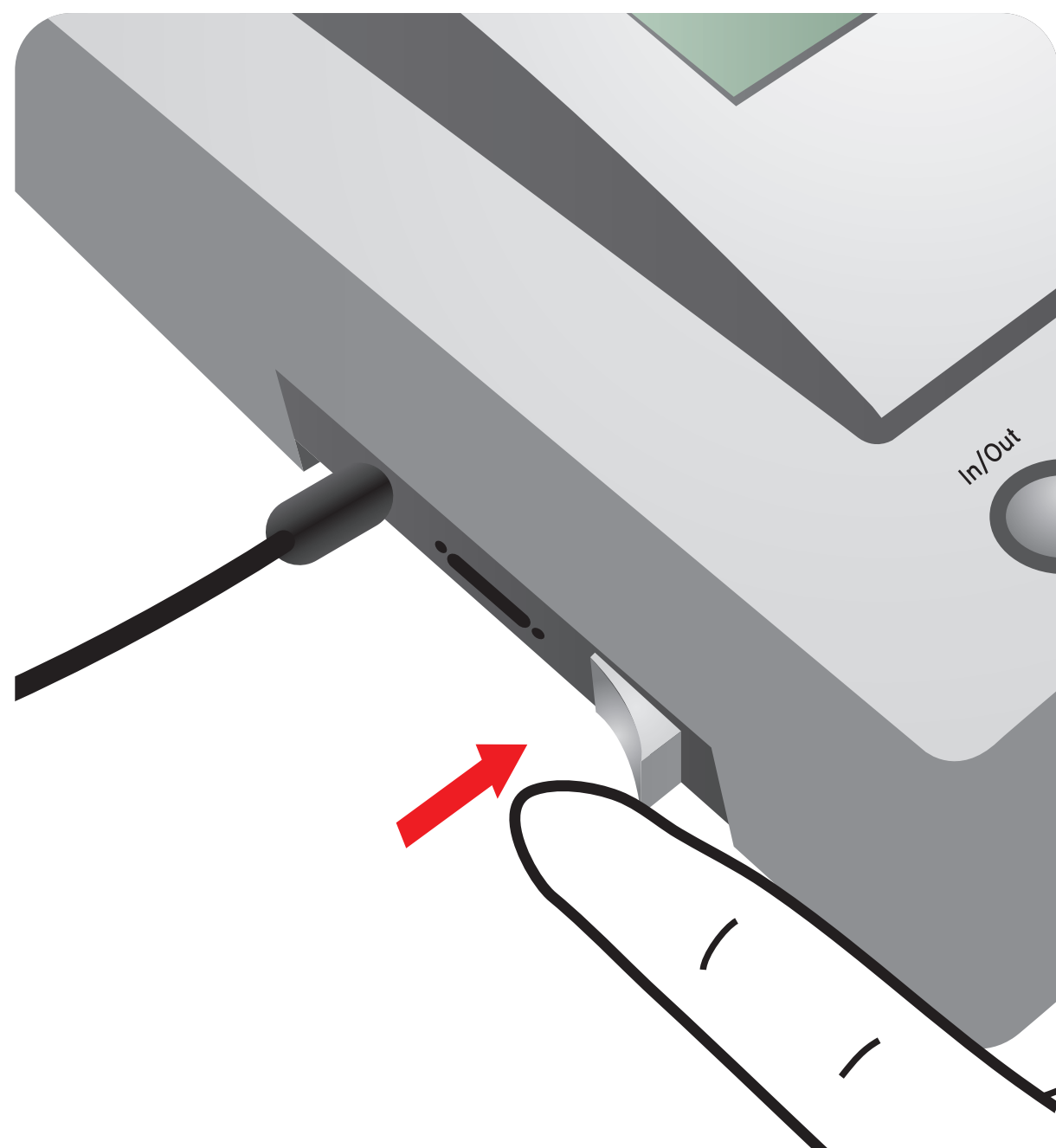


### Important

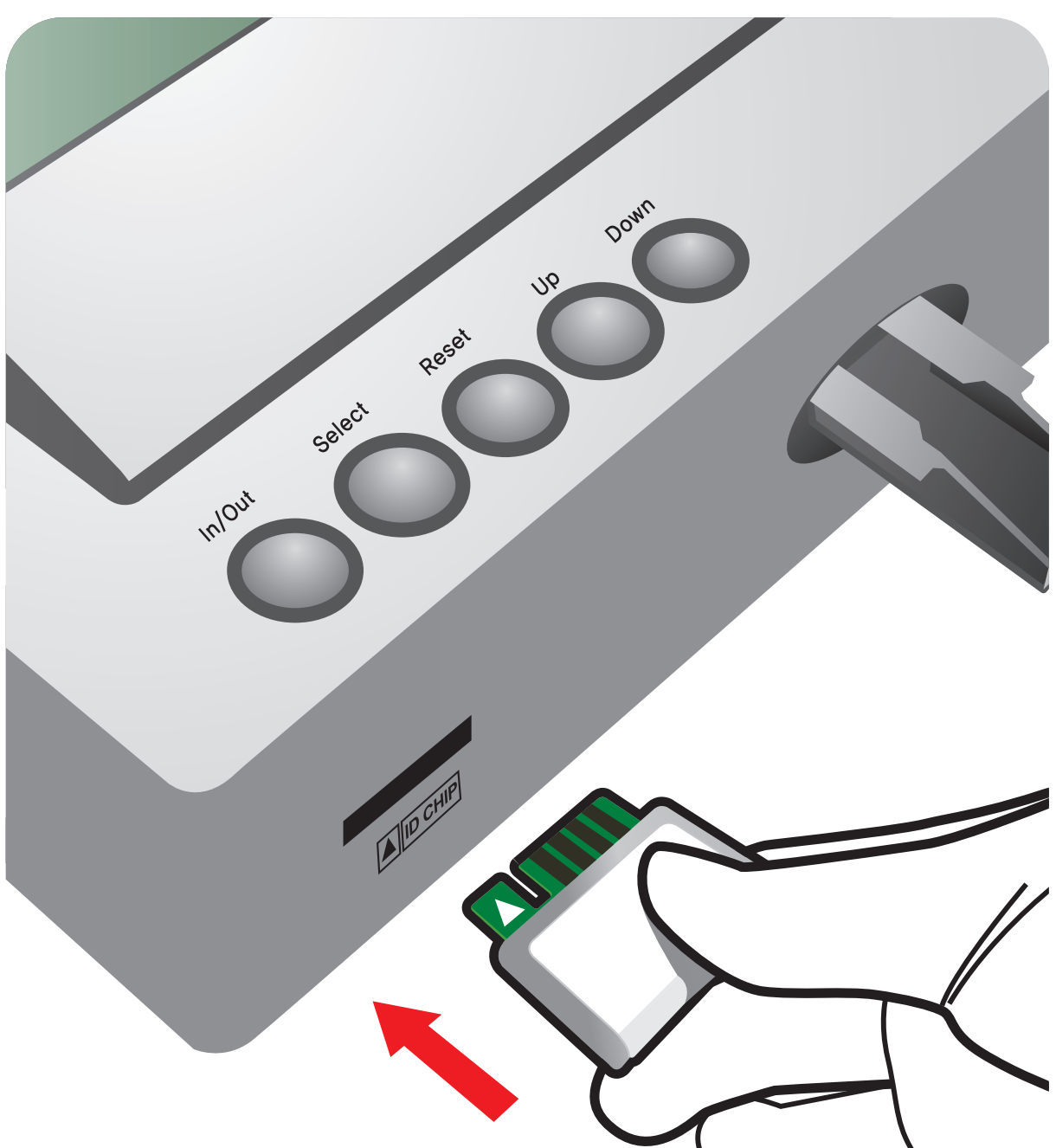
Allow 'Detection Buffer Tube' to attain room temperature at least for 30 minutes before performing the test

Make sure that lot number of the 'ID Chip' is exactly same as the lot number of 'Test Cartridge' and Detection Buffer Tube

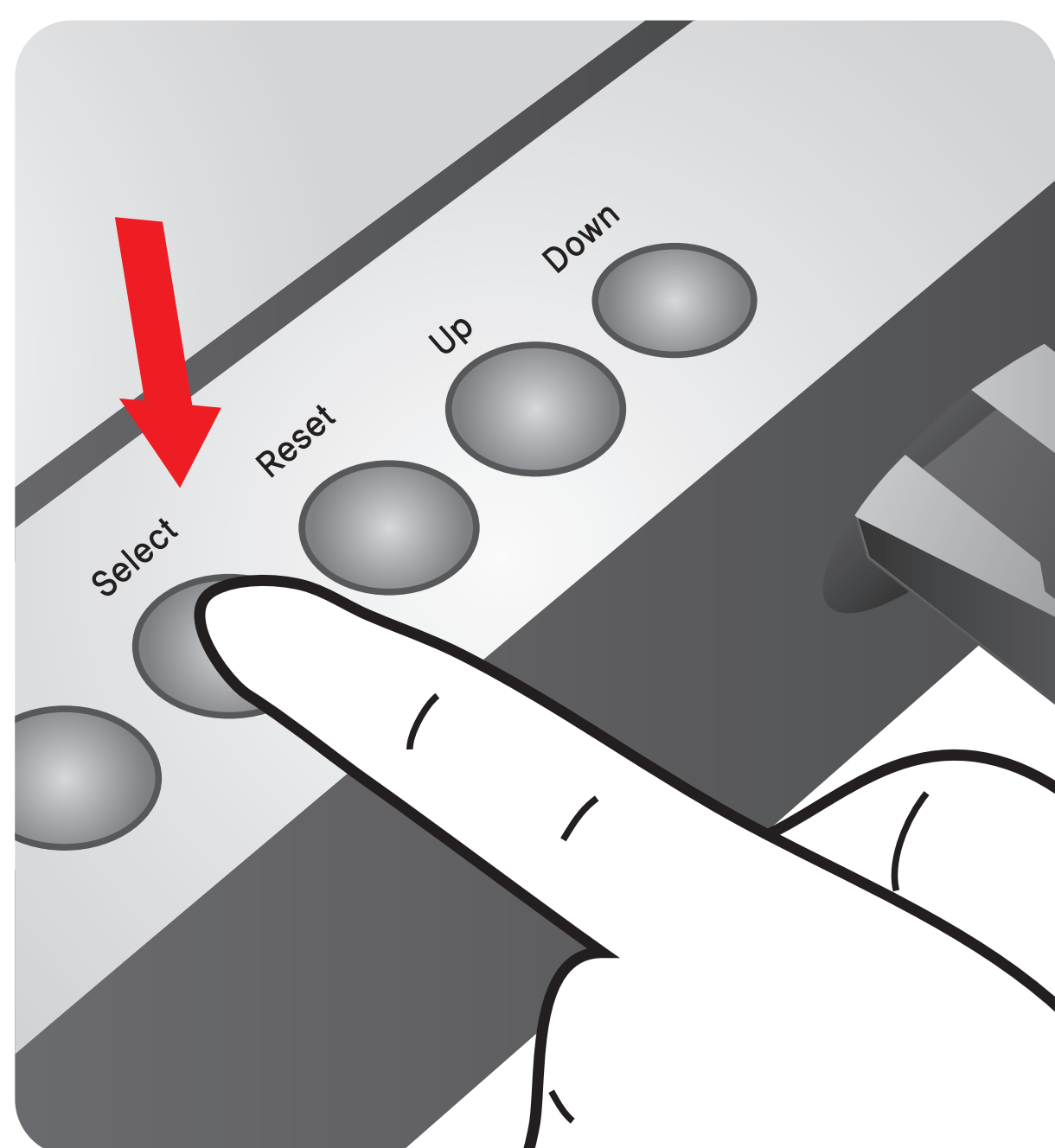
**1** Turn the power switch 'On'



**2** Insert ID Chip

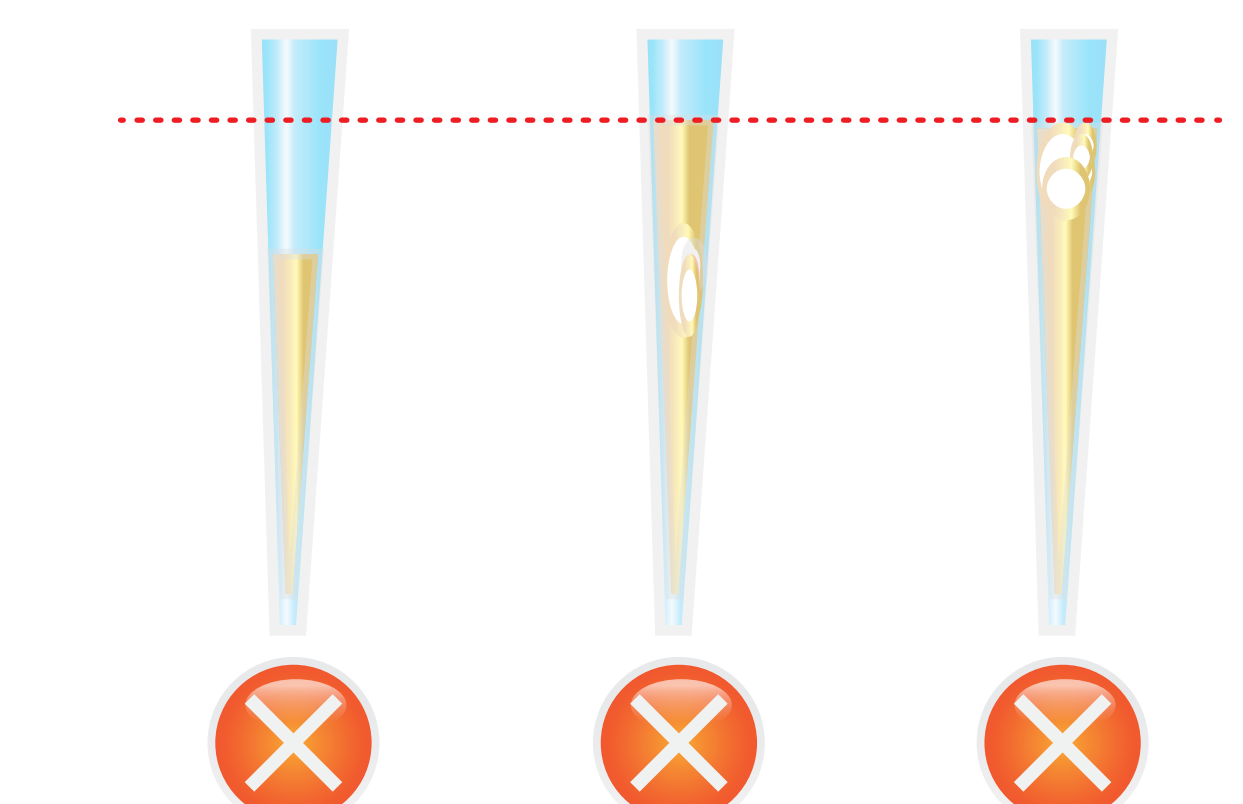
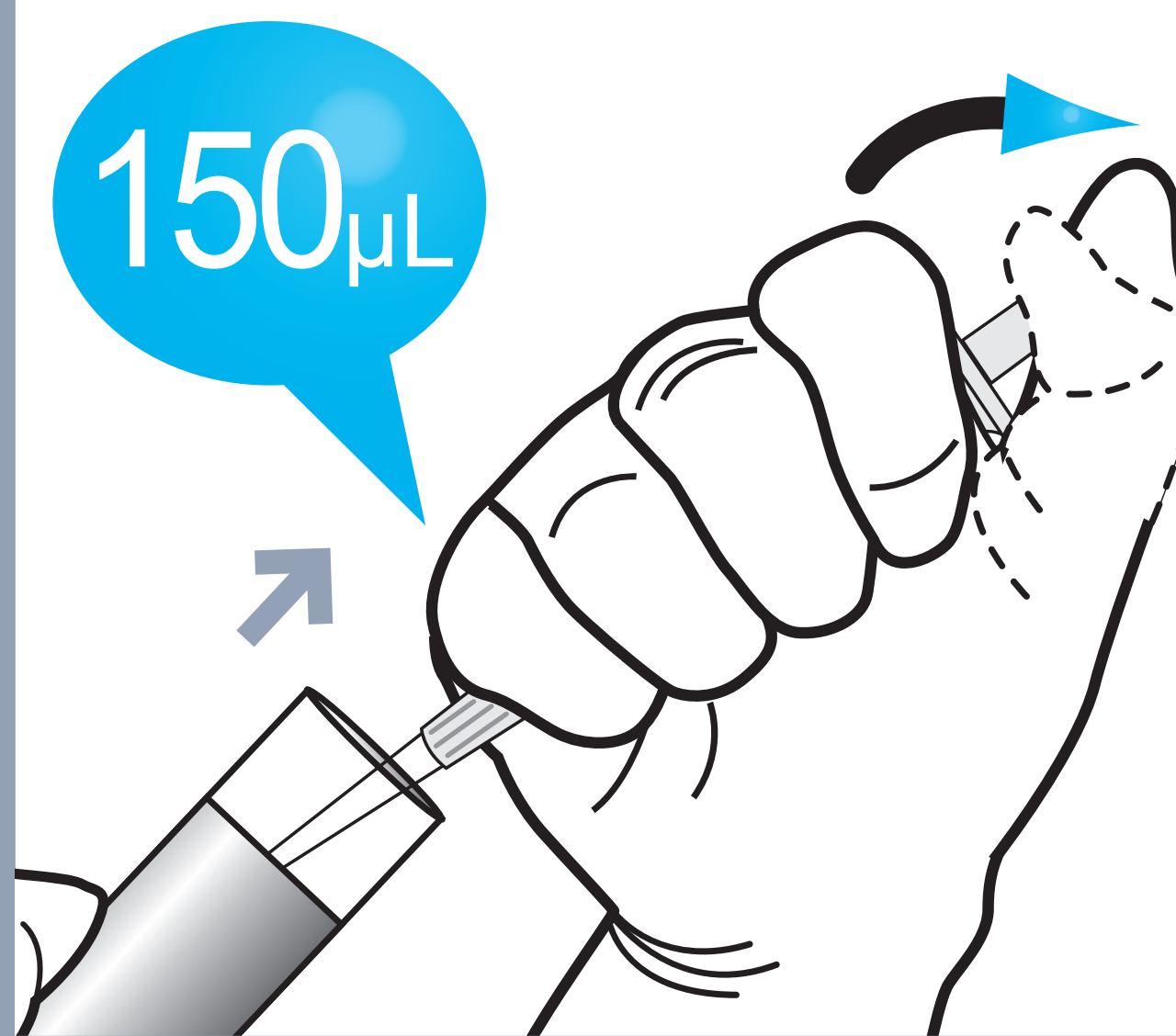


**3** Press 'Select'

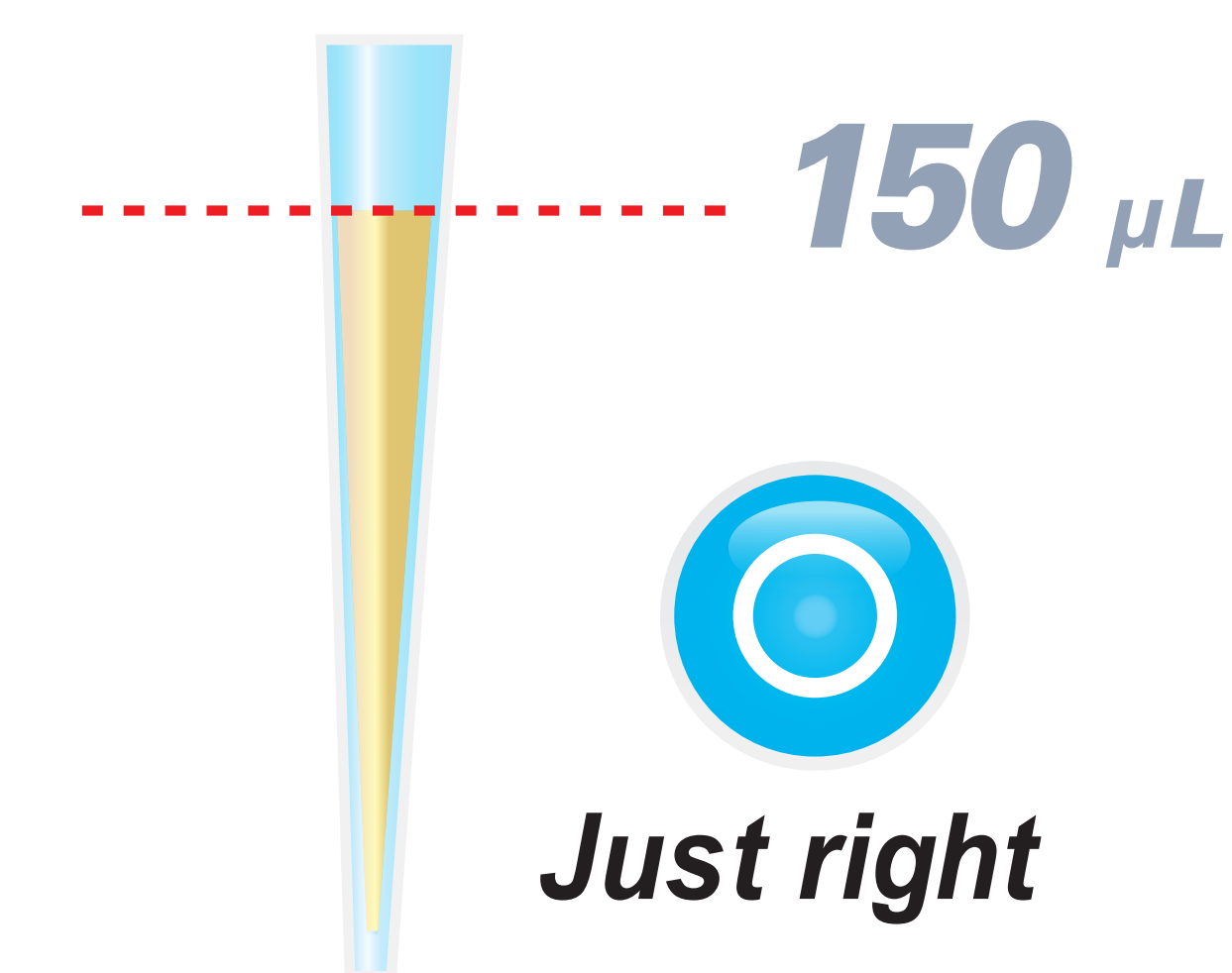


## Test Procedure

**1** Draw 150  $\mu$ L (Serum / Plasma / Control)



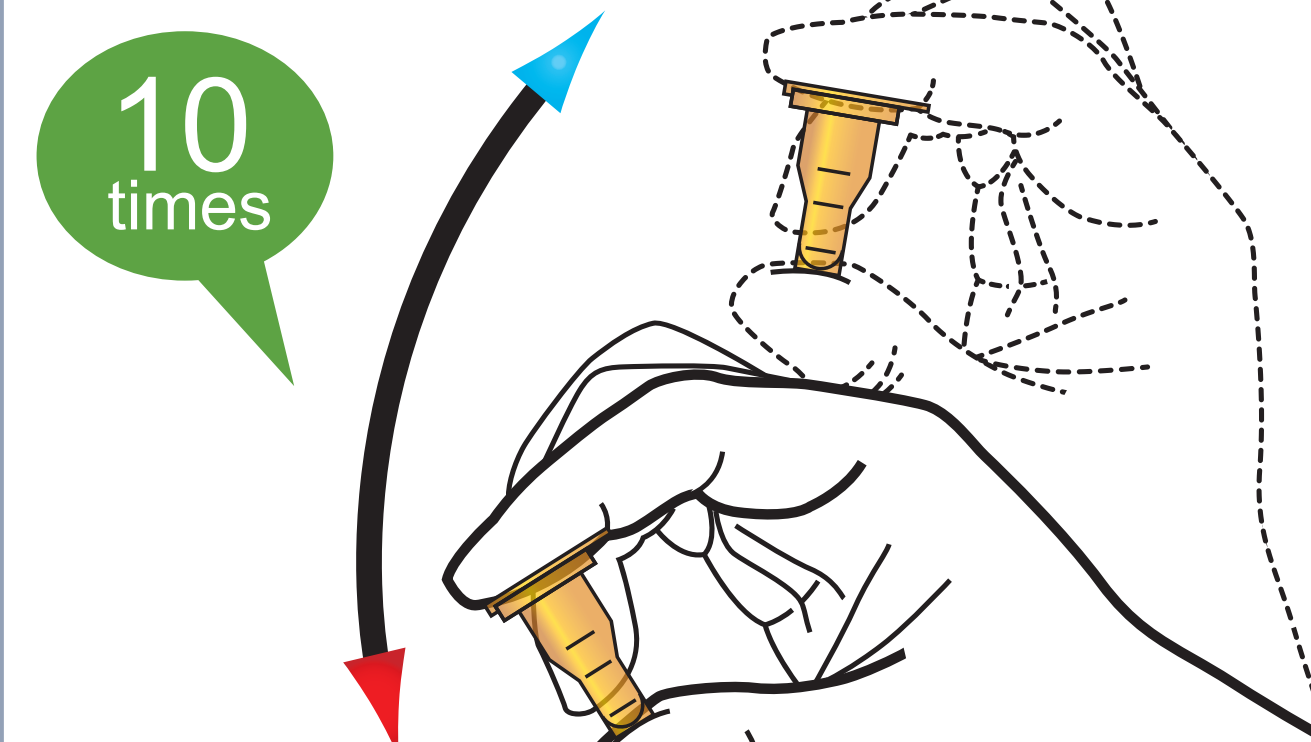
Too little or Bubble in the middle or near the top of the tip



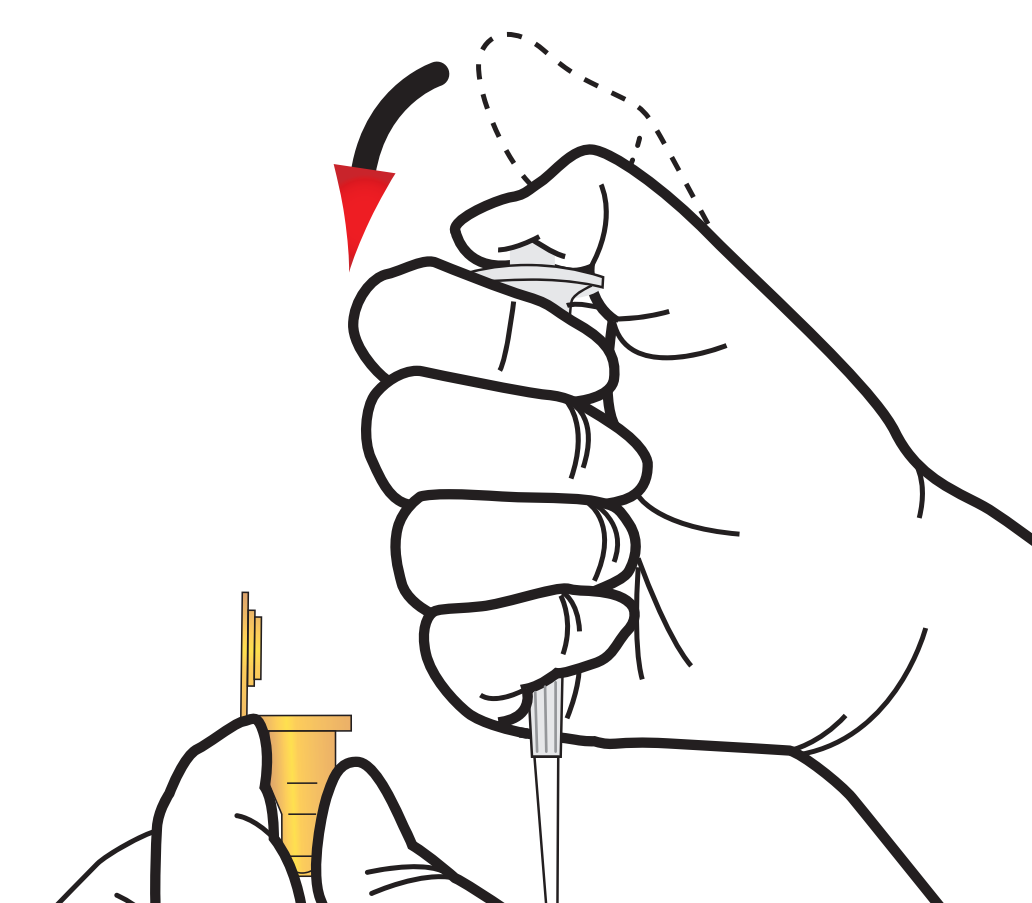
**2** Add it into detection buffer tube



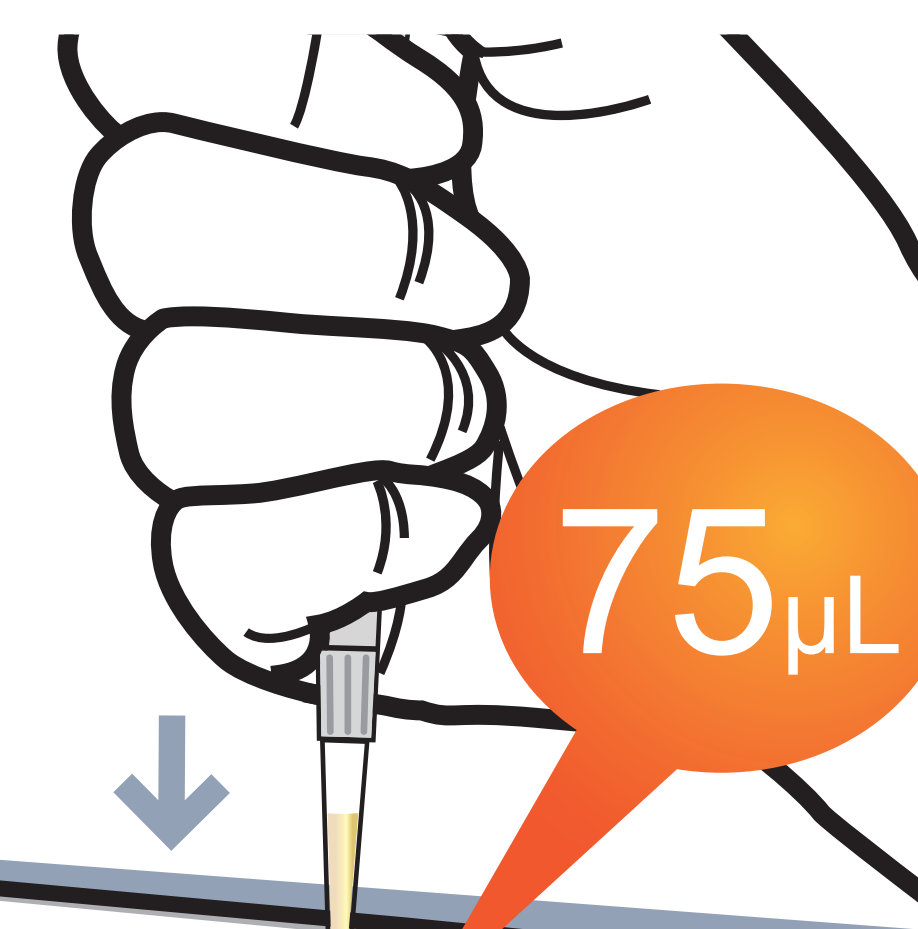
**3** Shake the sample mixture tube



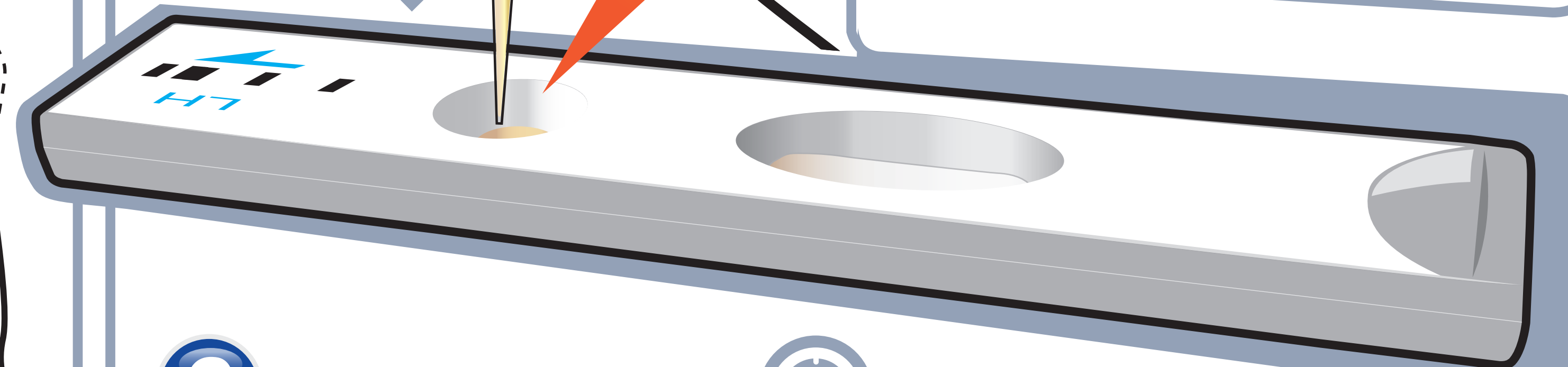
**4** Draw the sample mixture



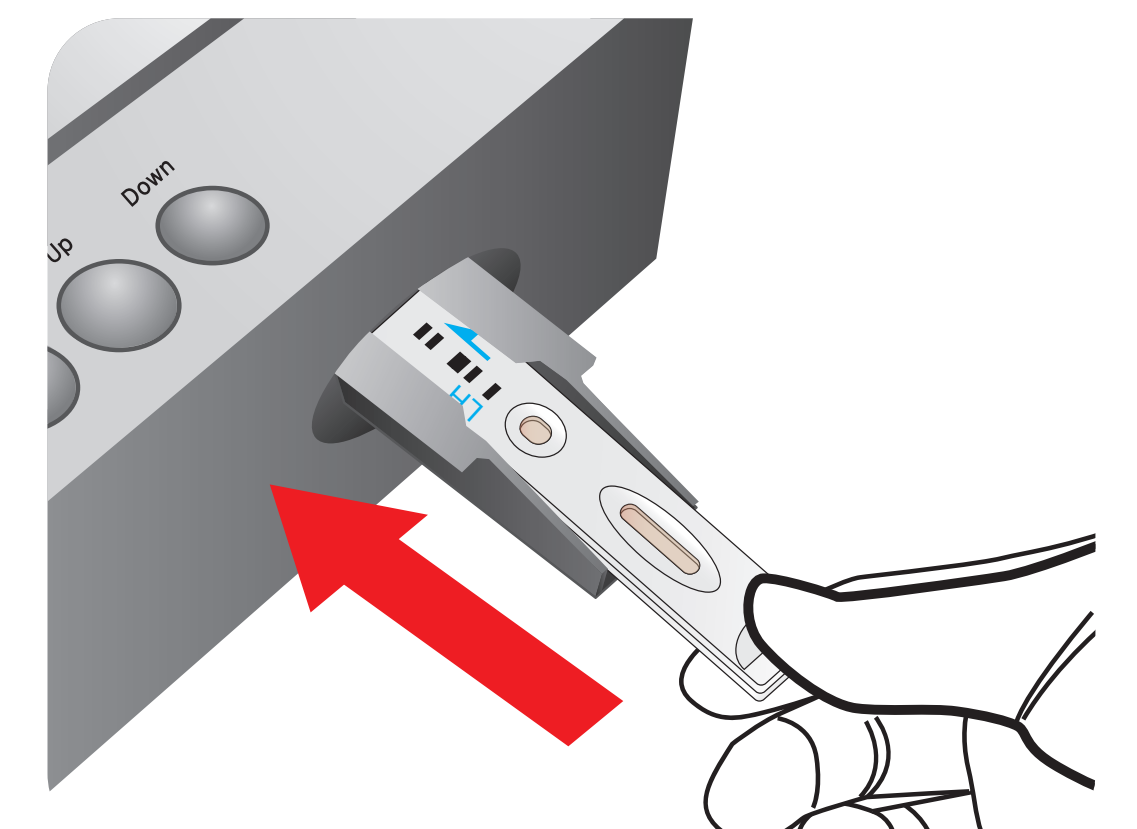
**5** Load the sample mixture



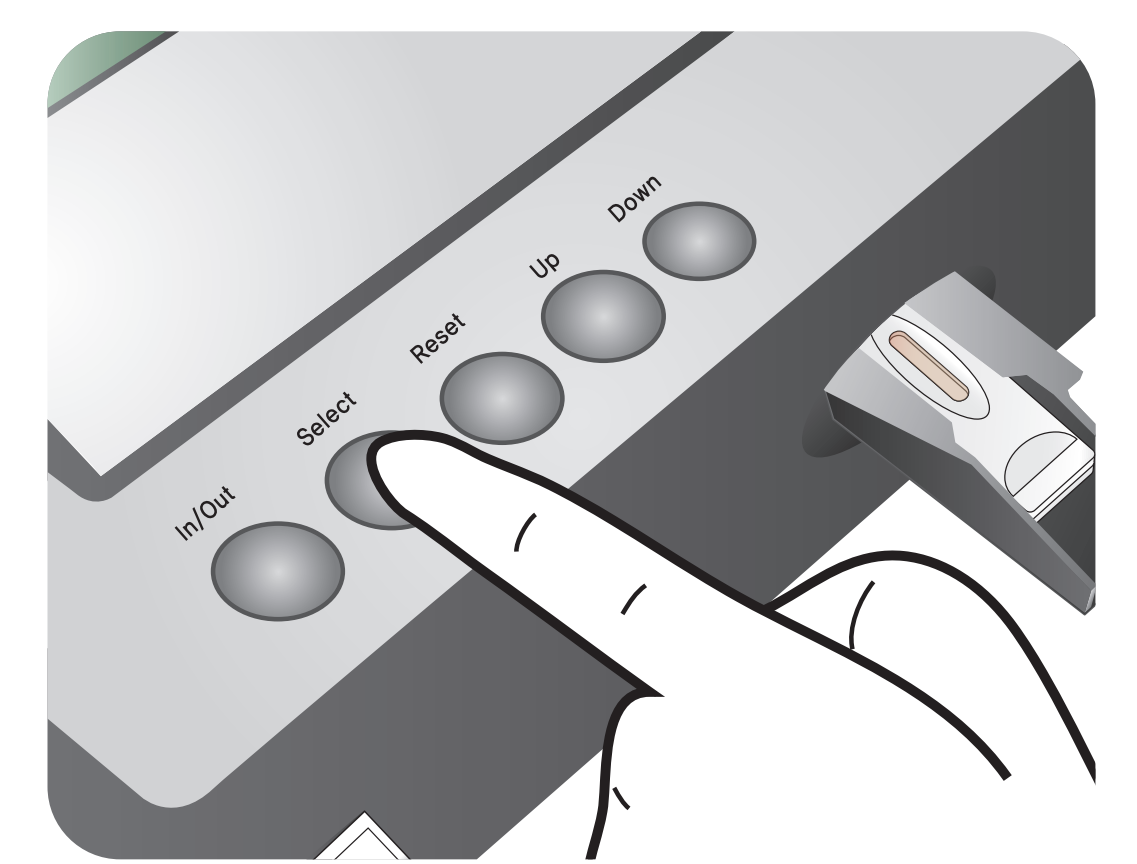
**6** Waiting 15 minutes



**7** Insert the test cartridge



**8** Press 'Select'



**9** Read the test result

