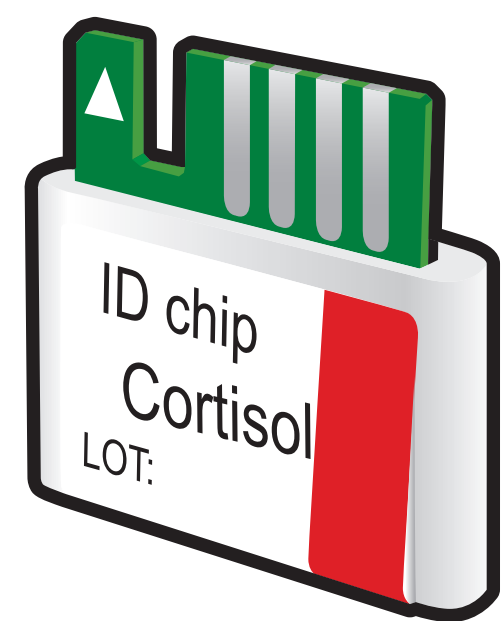


ichromα™ Cortisol

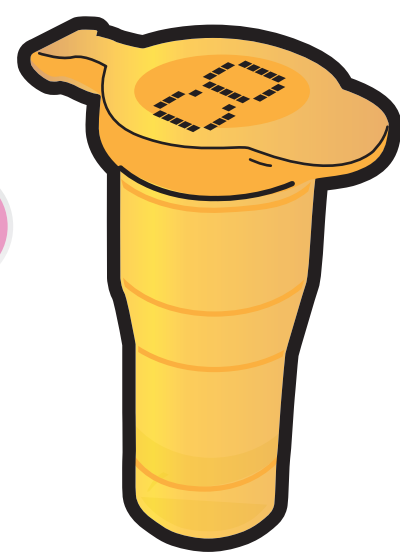
Test Setup

Test Components

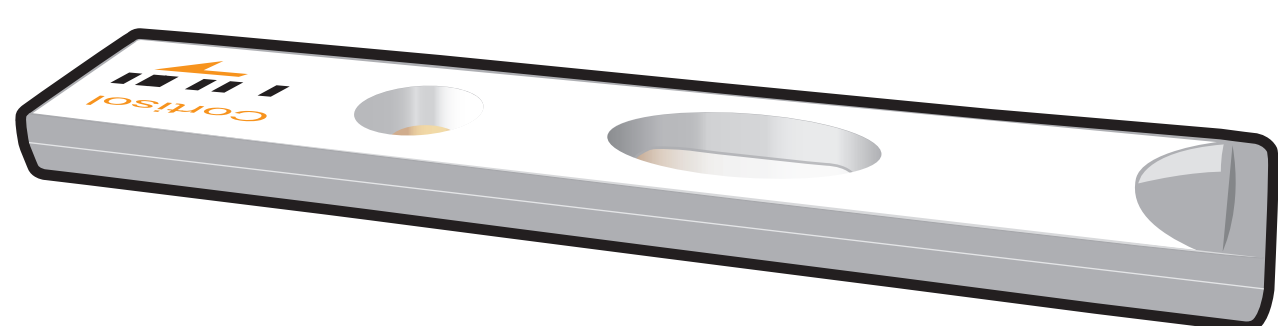
ID Chip



Detection Buffer Tube



Test Cartridge



ichromα™ Reader

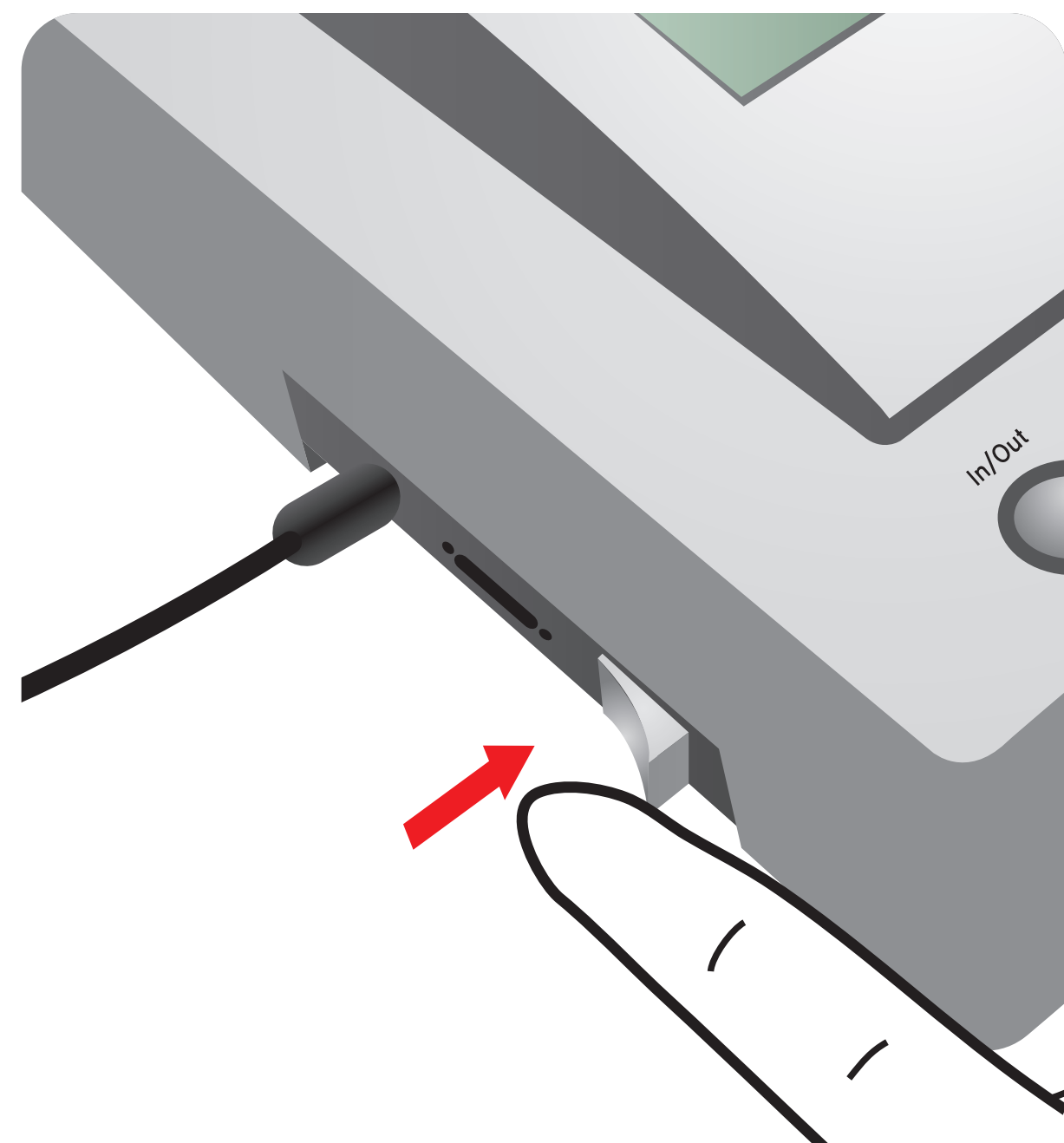


Important

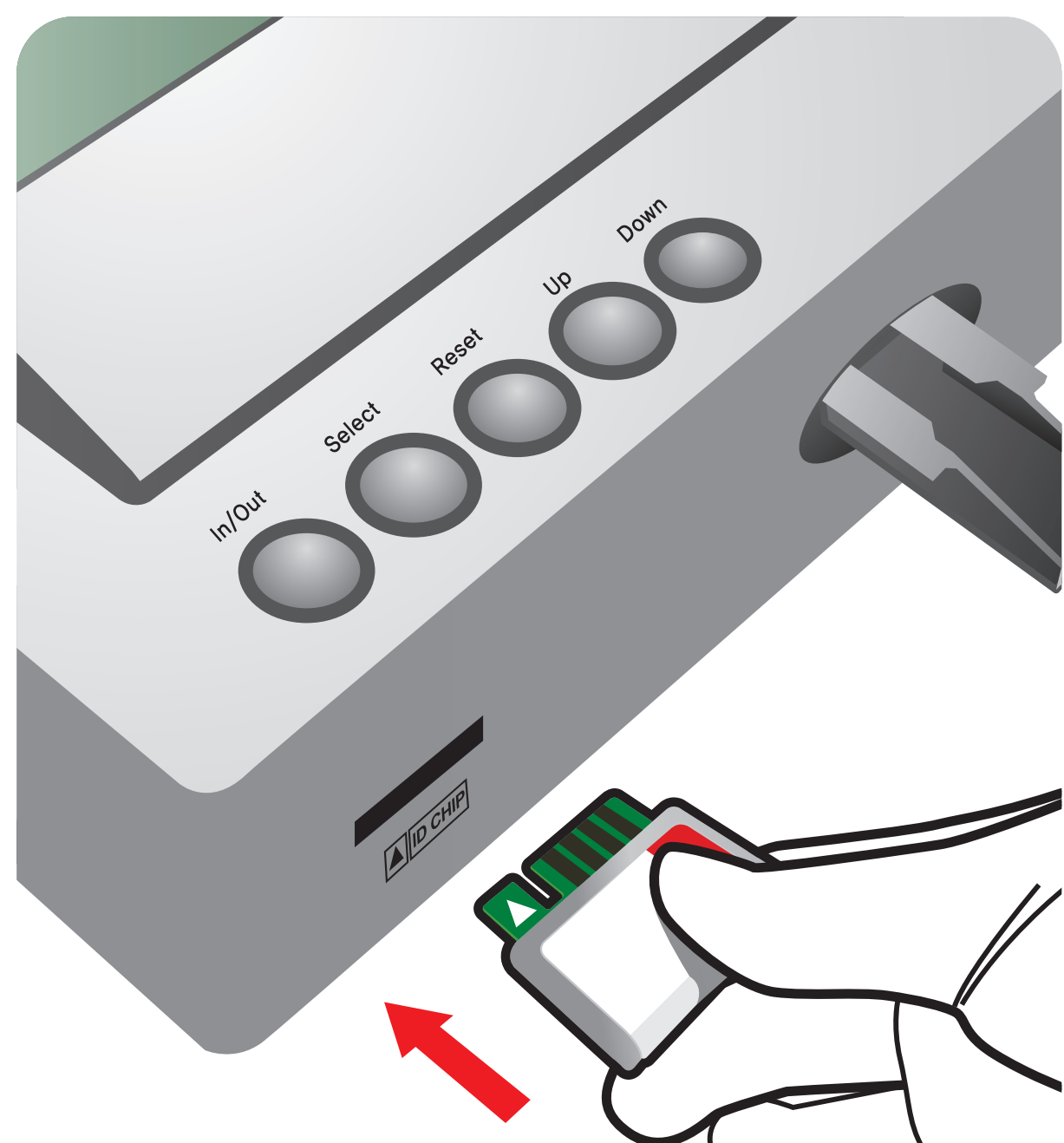
Allow 'Detection Buffer Tube' to attain room temperature at least for 30 minutes before performing the test

Make sure that lot number of the 'ID Chip' is exactly same as the lot number of 'Test Cartridge' and 'Detection Buffer Tube'

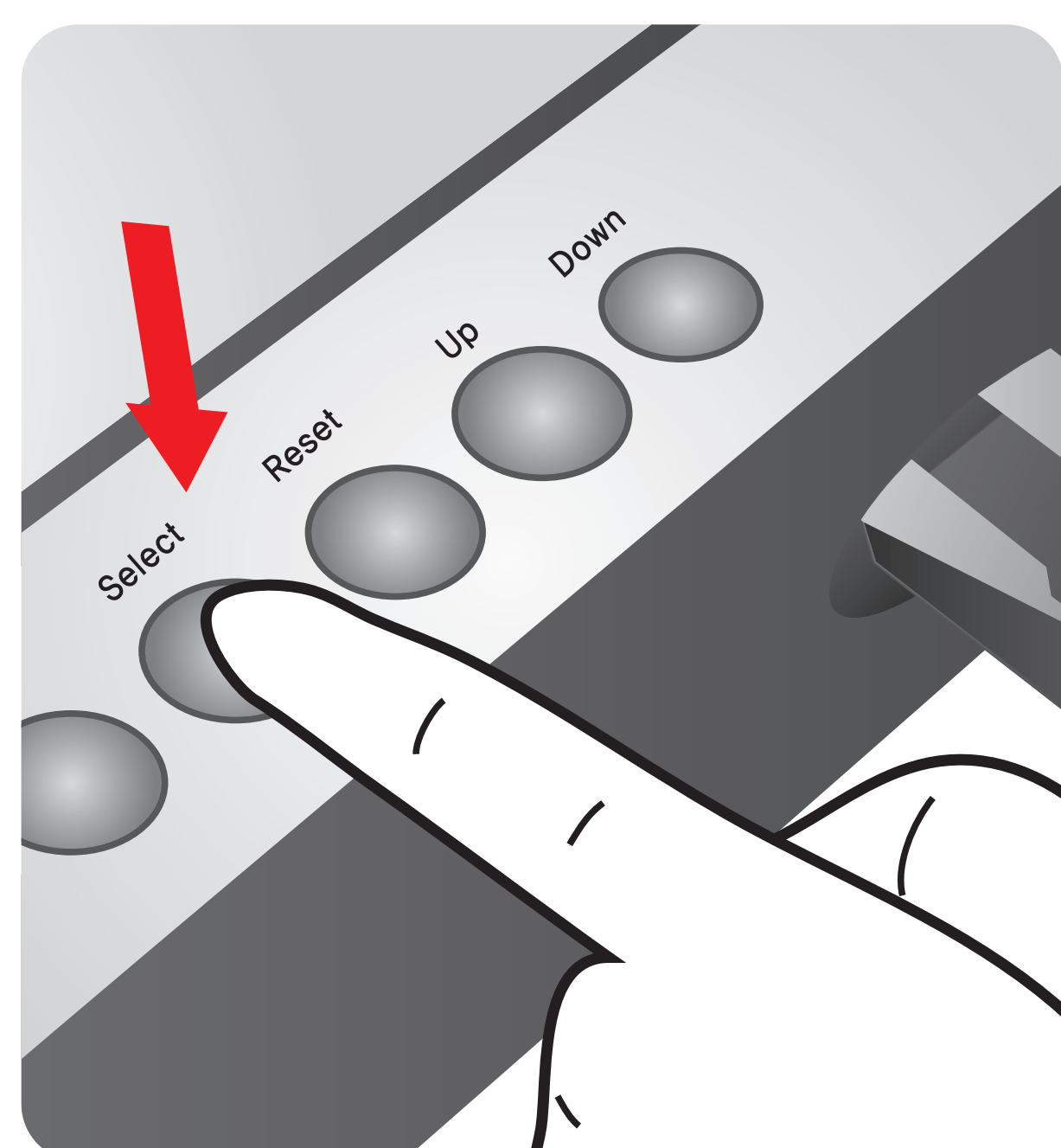
1 Turn the power switch 'On'



2 Insert ID Chip



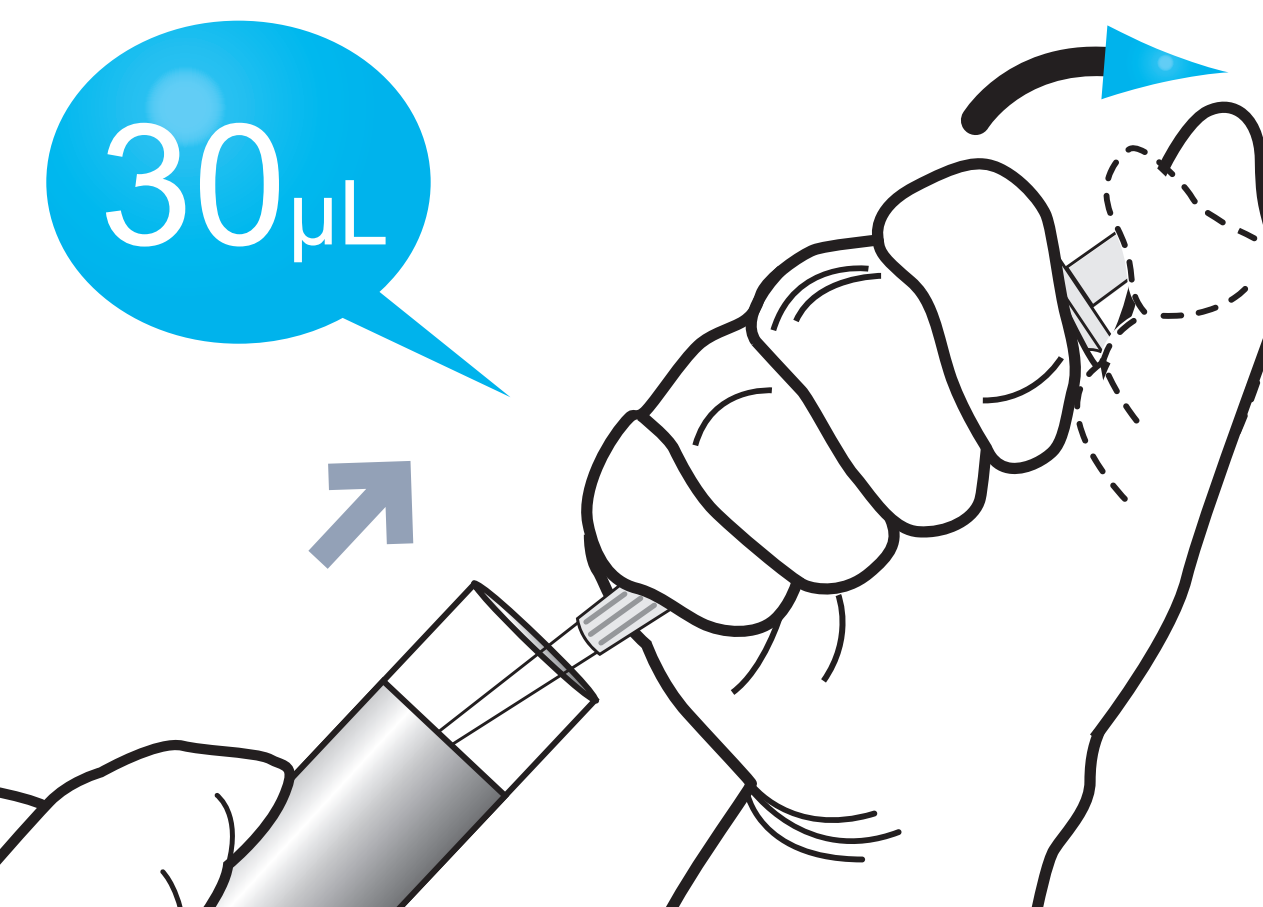
3 Press 'Select'



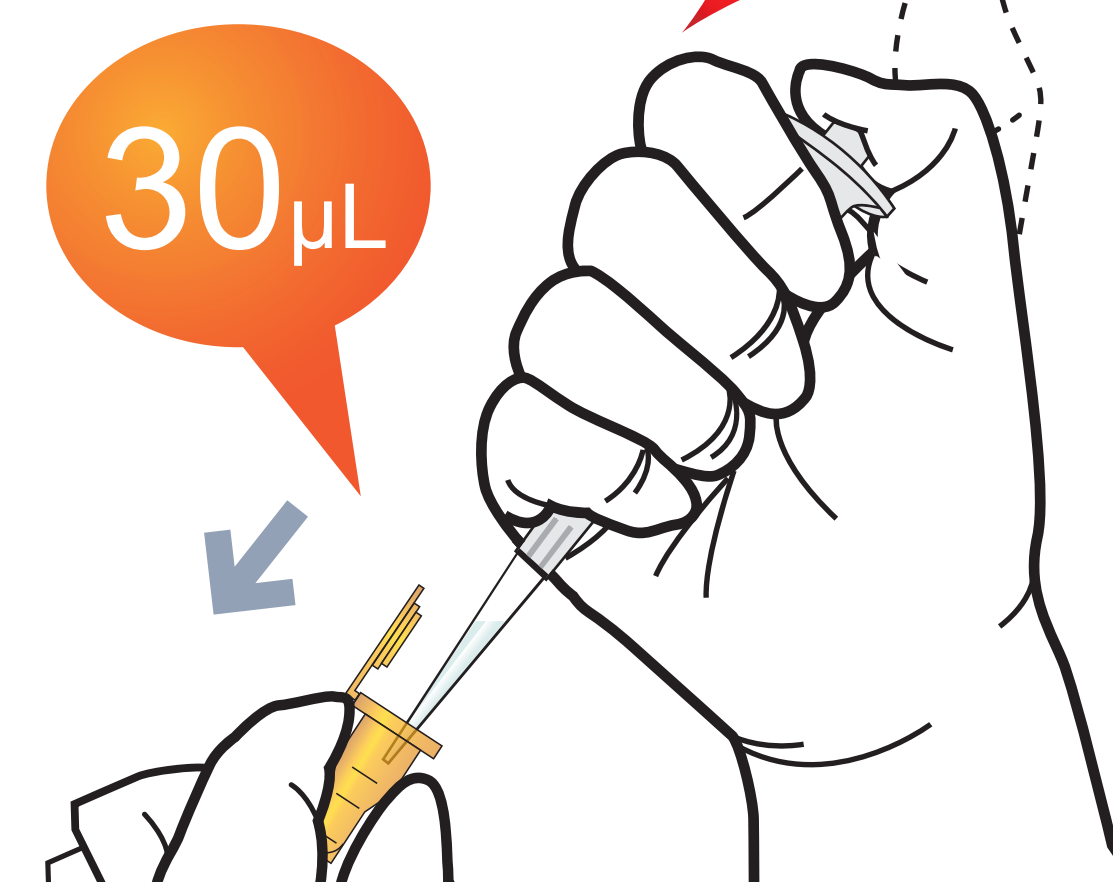
Test Procedure

In case of serum, plasma, control

1 Draw Serum, Plasma, Control



2 Add it into detection buffer tube



In case of whole blood

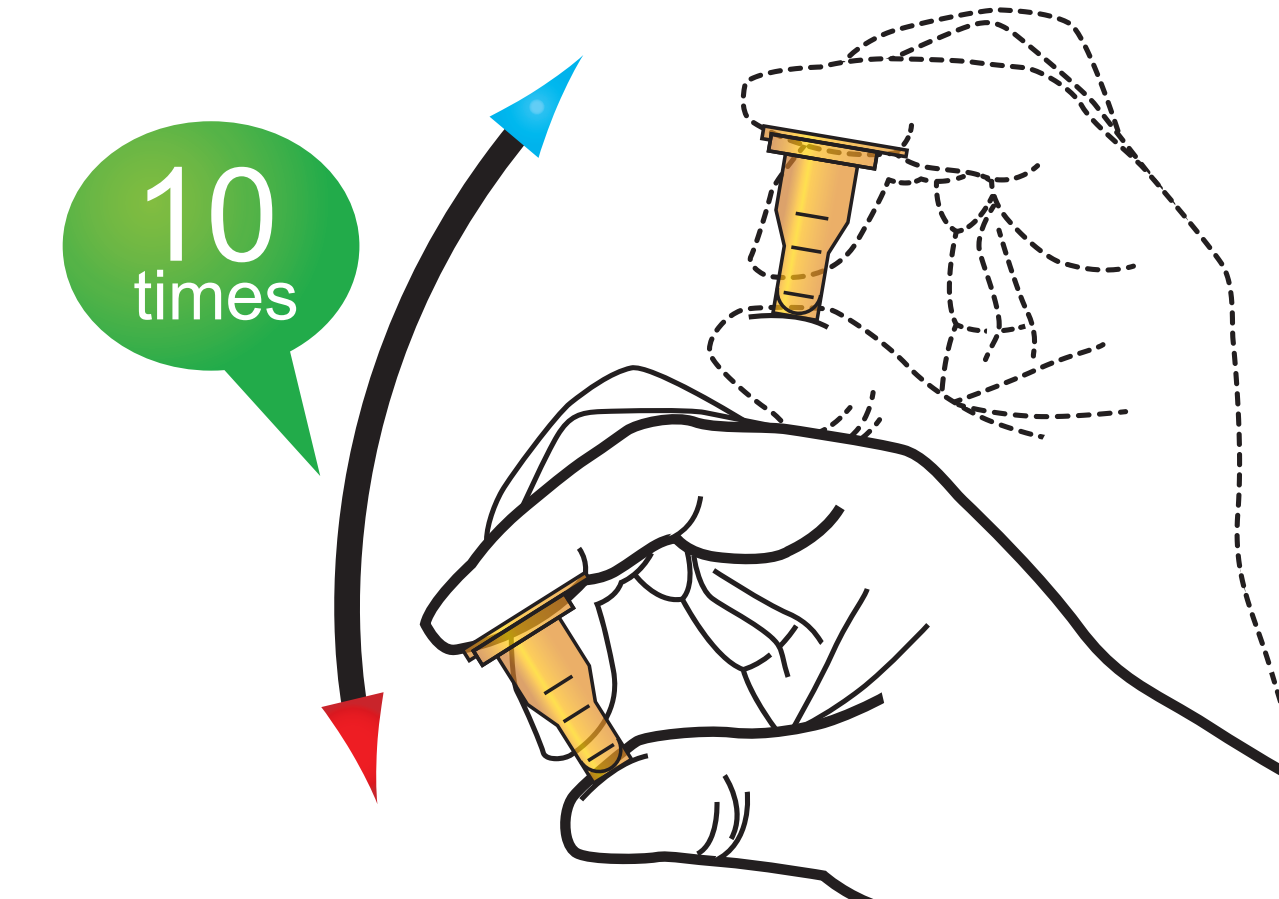
1 Draw whole blood



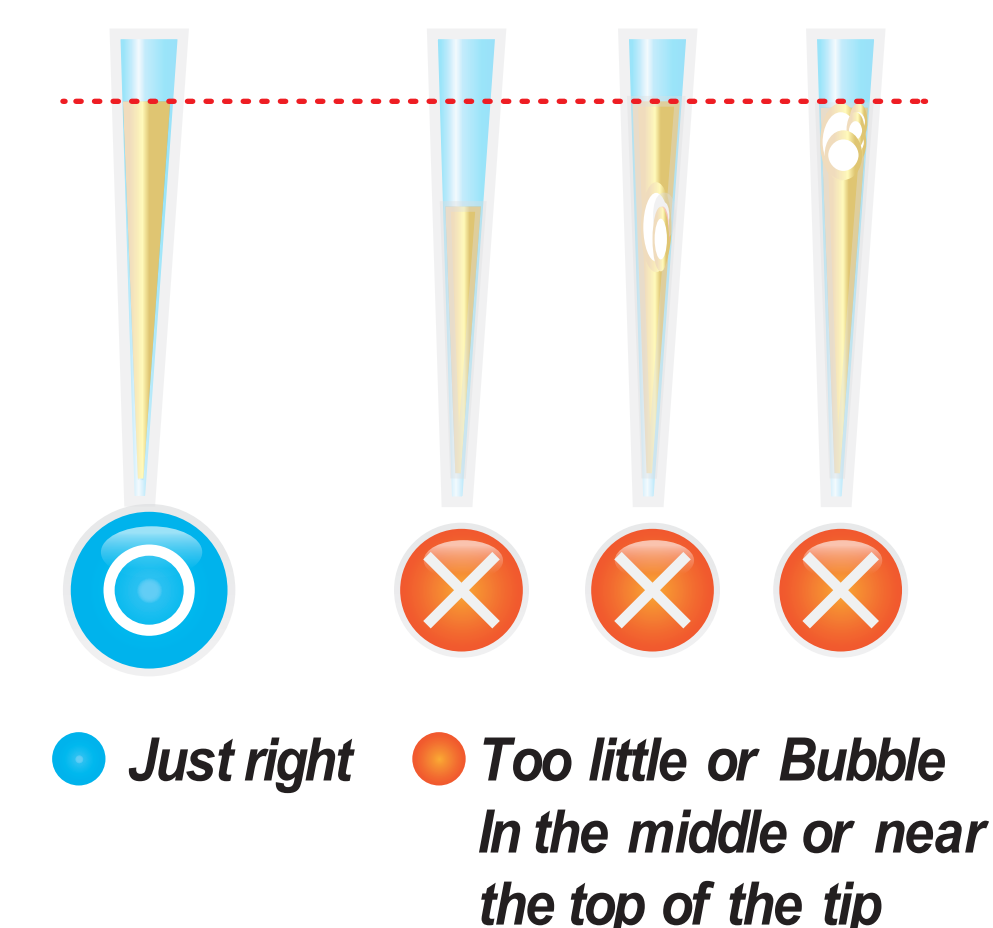
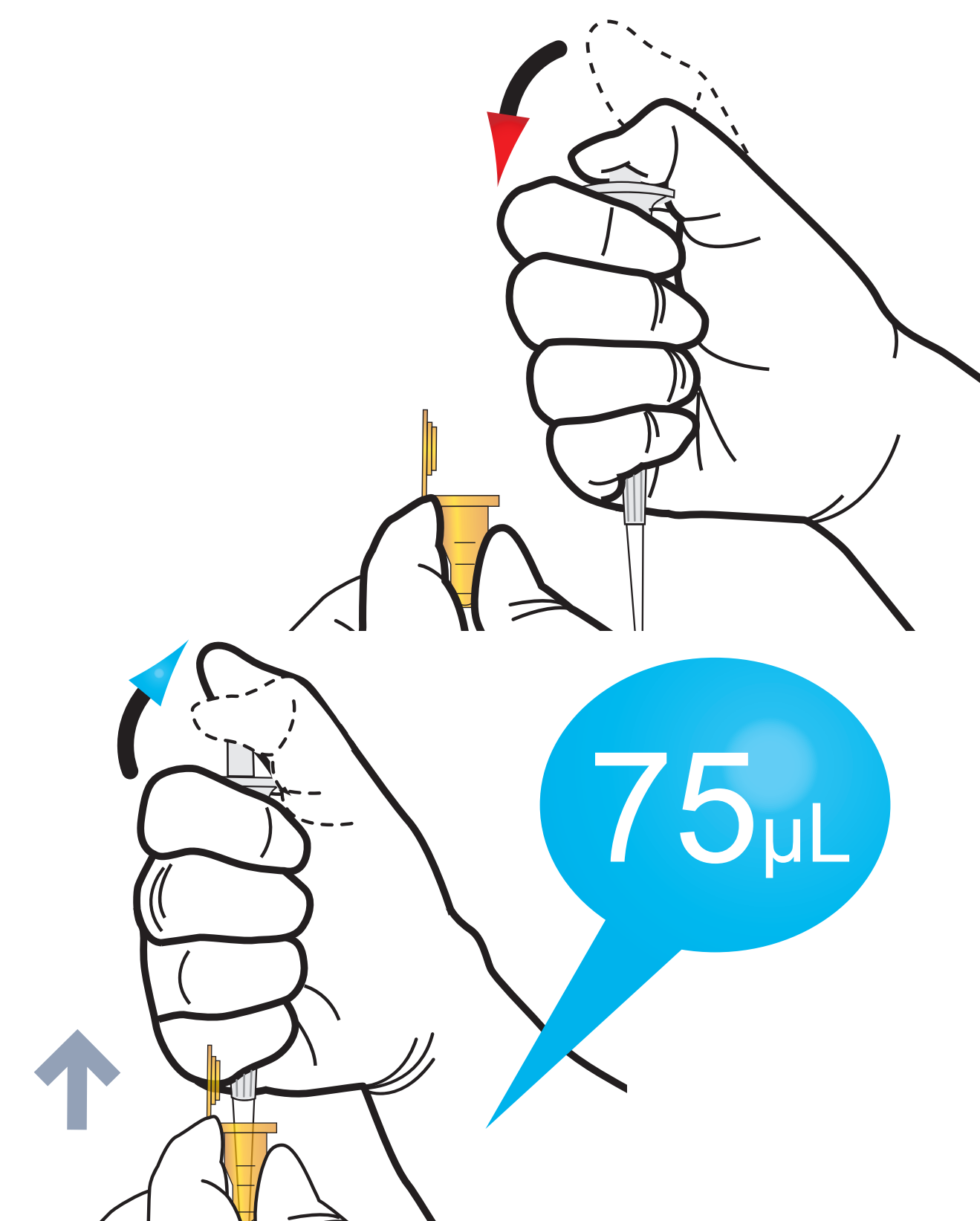
2 Add it into detection buffer tube



3 Shake the detection buffer tube



4 Draw the detection buffer tube



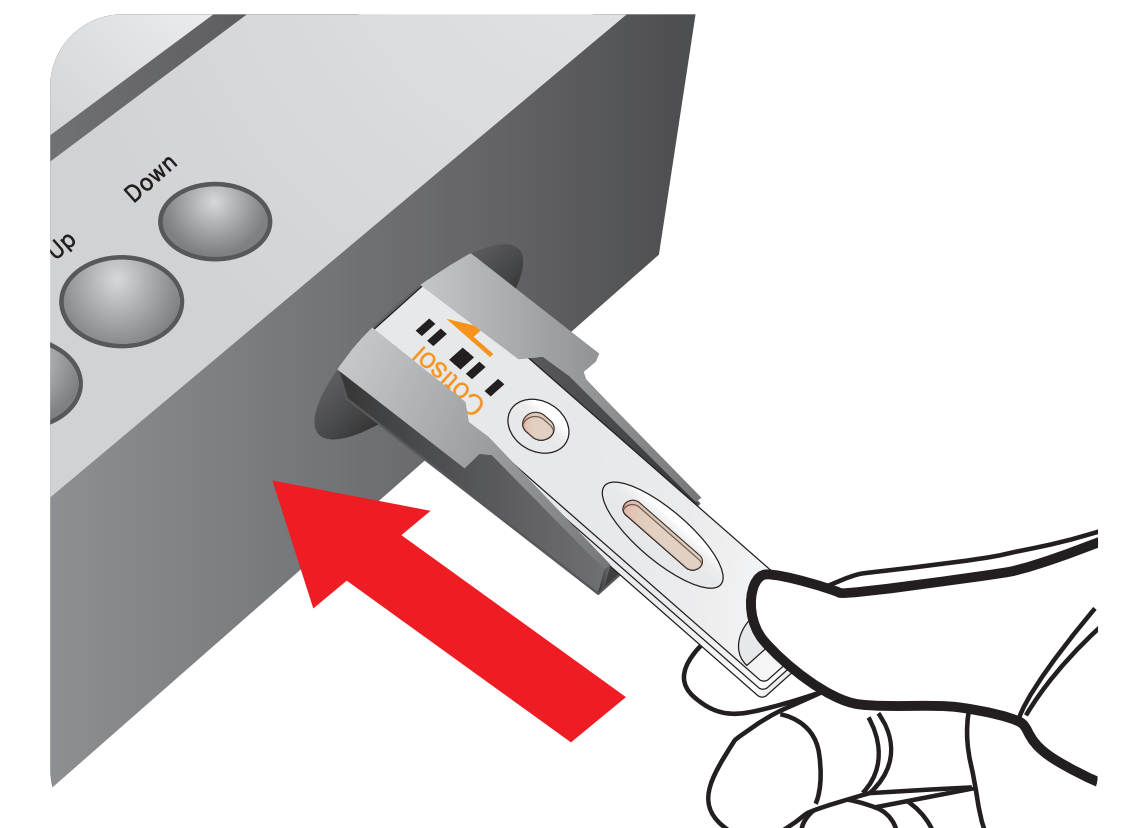
5 Load the sample mixture



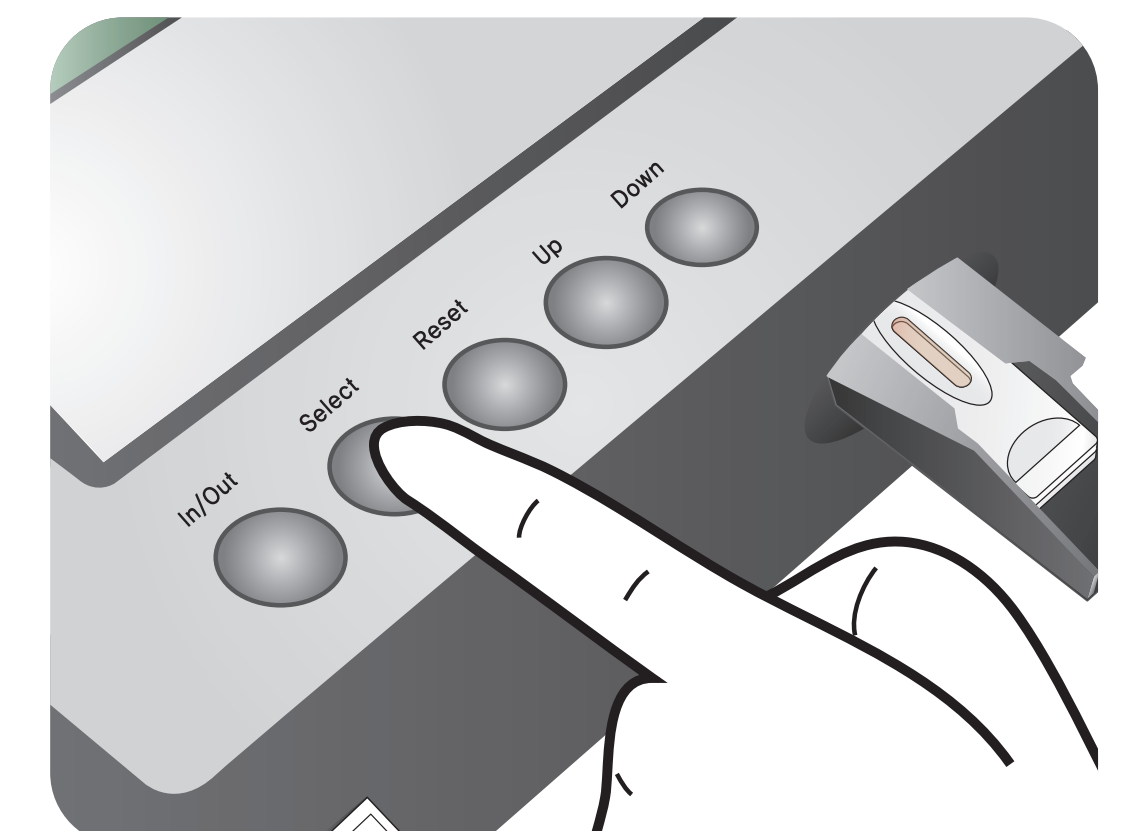
6 Waiting 10 minutes



7 Insert the test cartridge



8 Press 'Select'



9 Read the test result

