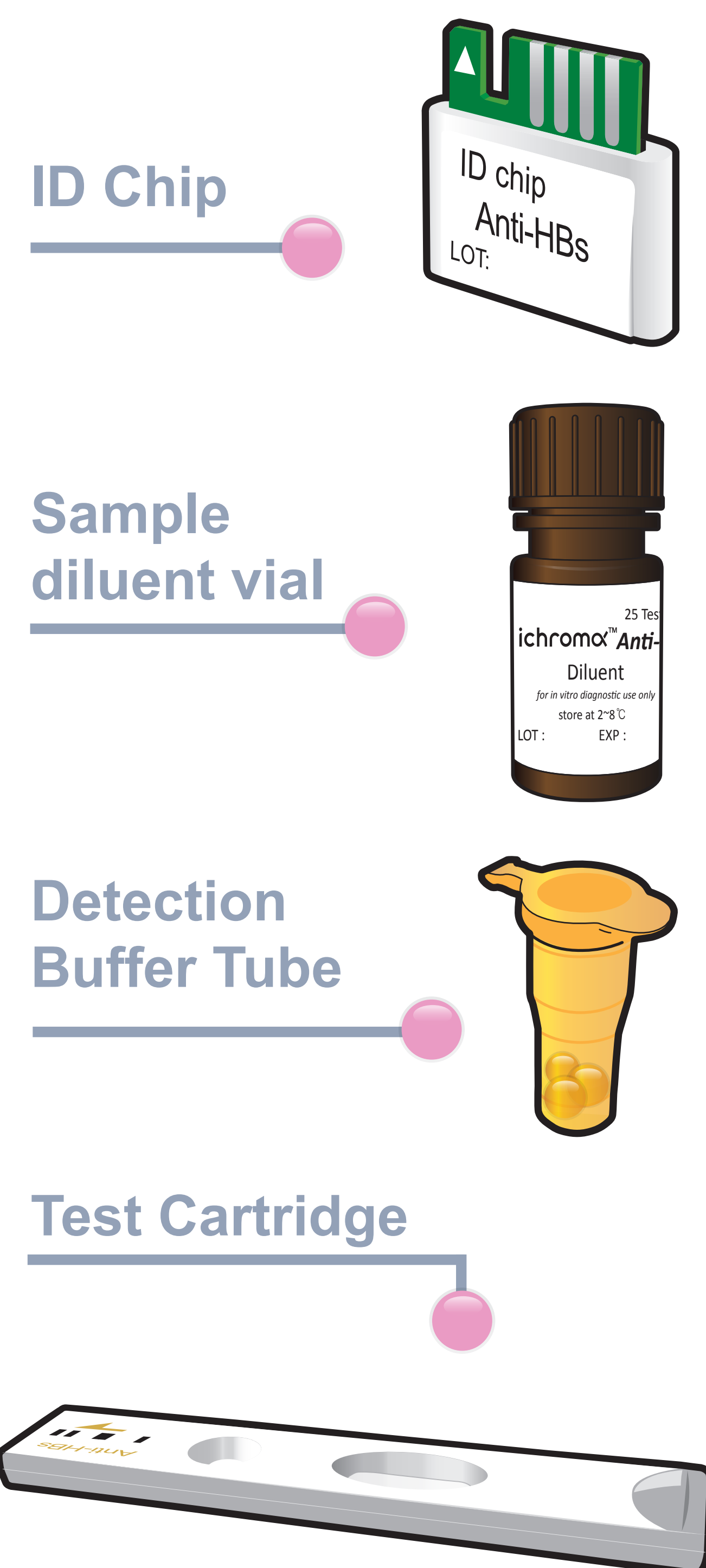


# ichromα™ Anti-HBs

## Test Setup

### Test Components



### iCHROMA-II Reader

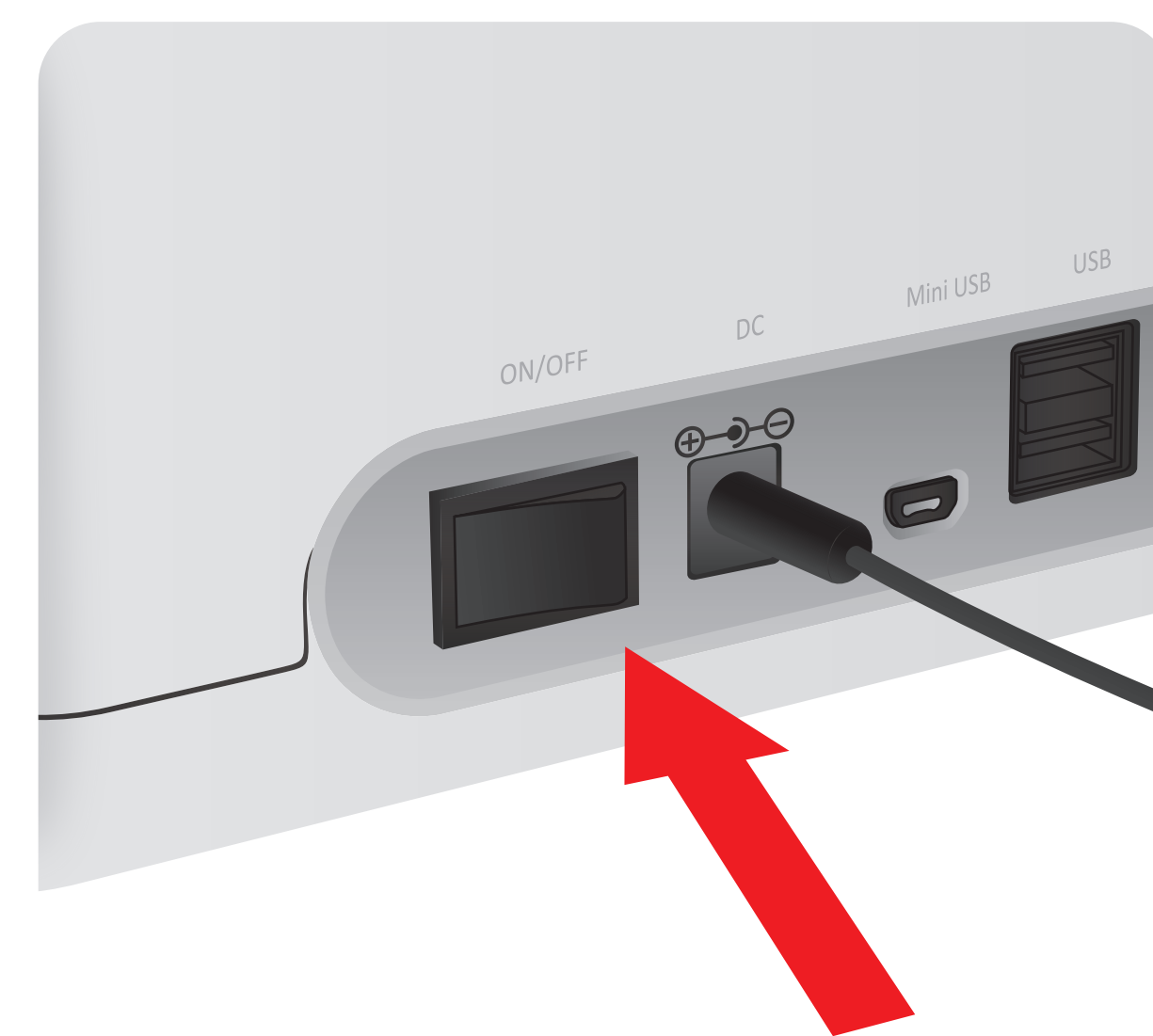


### Important

Allow 'Detection Buffer Tube' to attain room temperature at least for 30 minutes before performing the test

Make sure that lot number of the 'ID Chip' is exactly same as the lot number of 'Test Cartridge' and 'Detection Buffer Tube'

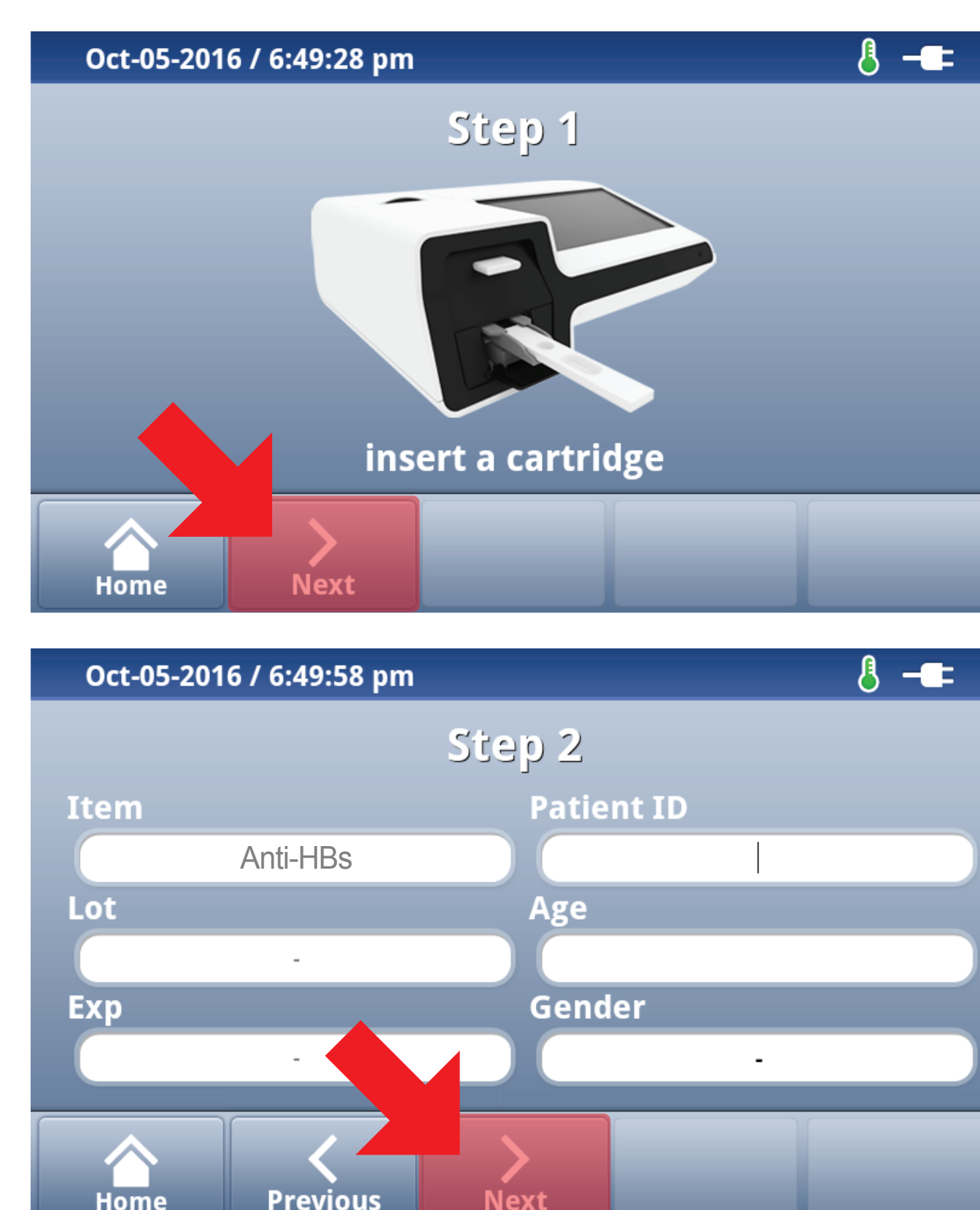
### 1 Turn the power switch 'On'



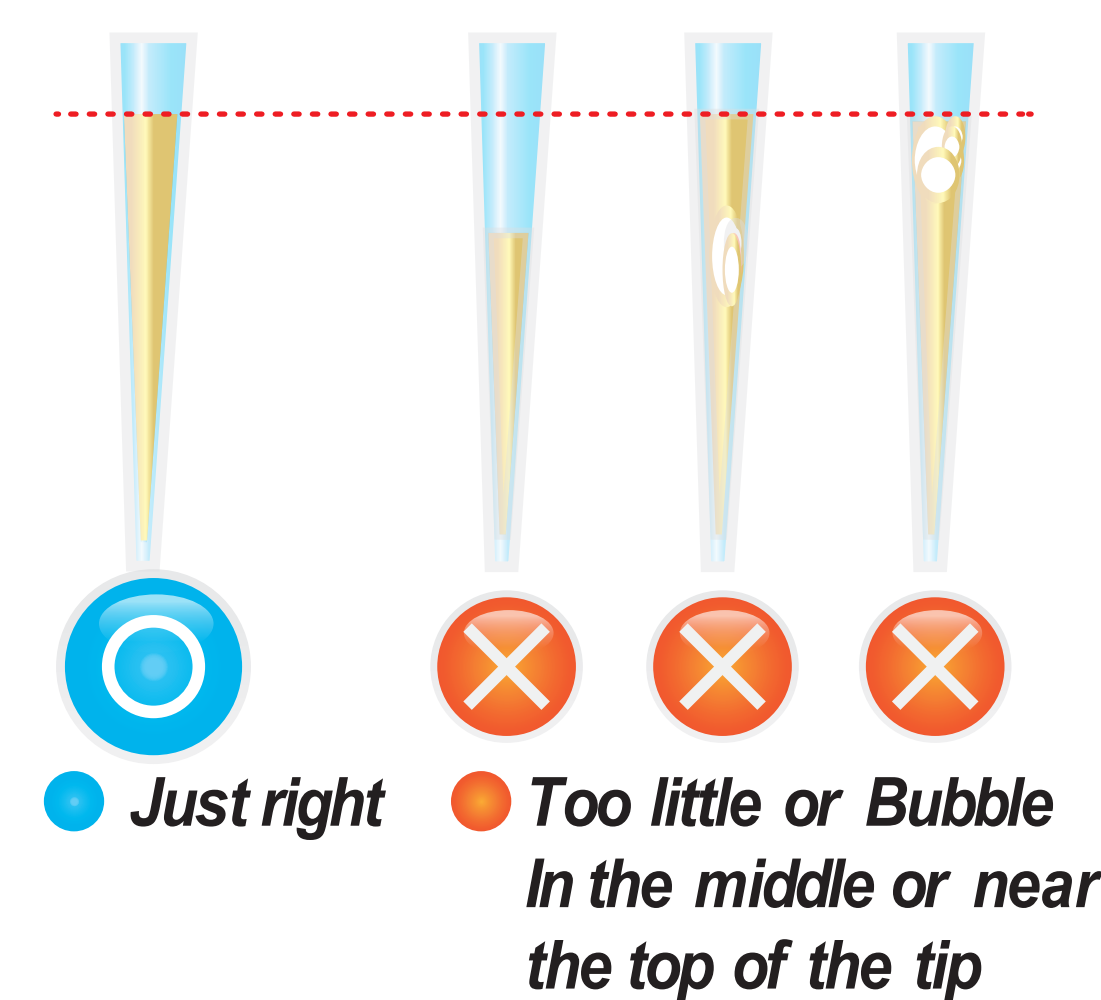
### 2 Insert ID Chip



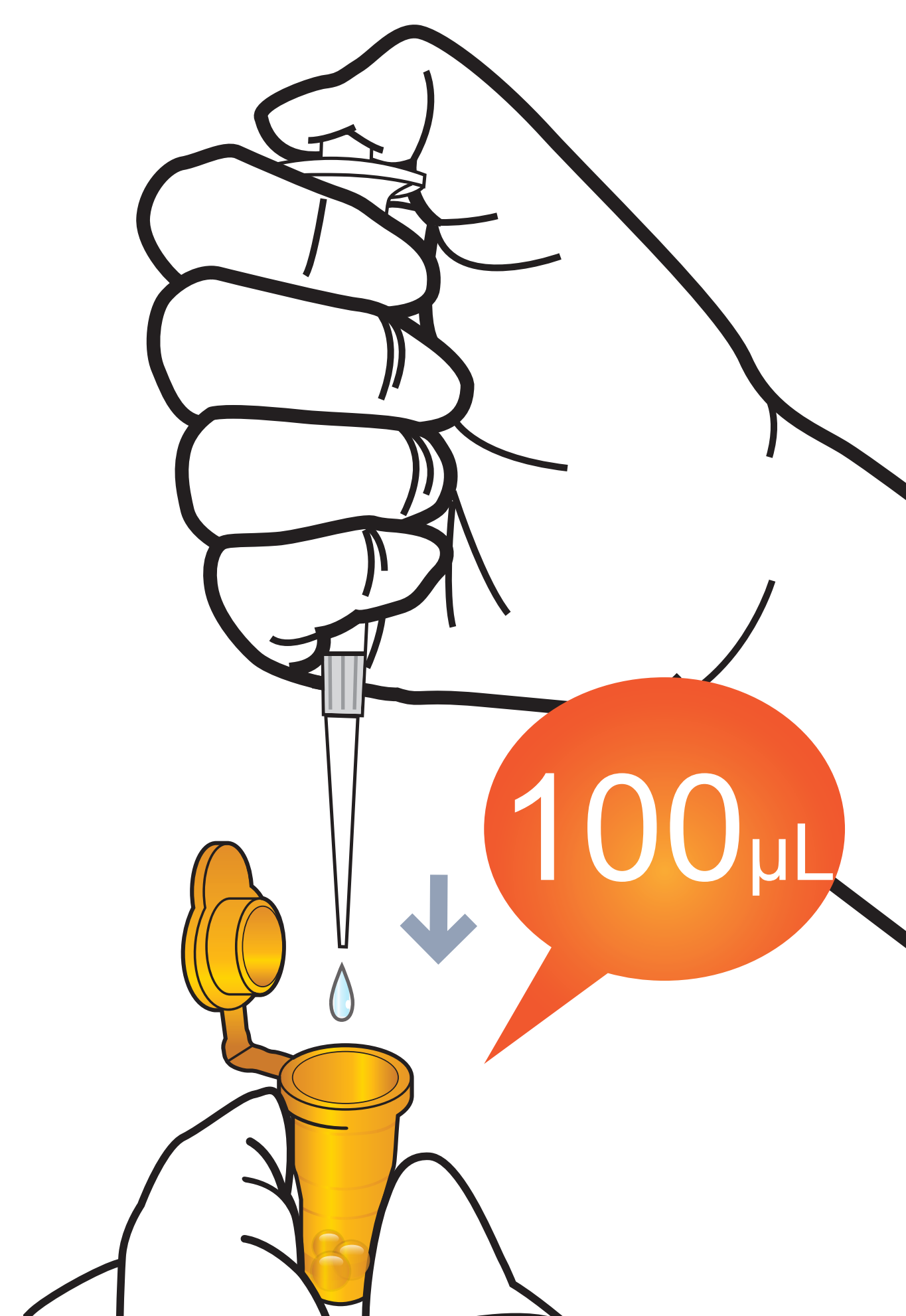
### 3 Press 'Select'



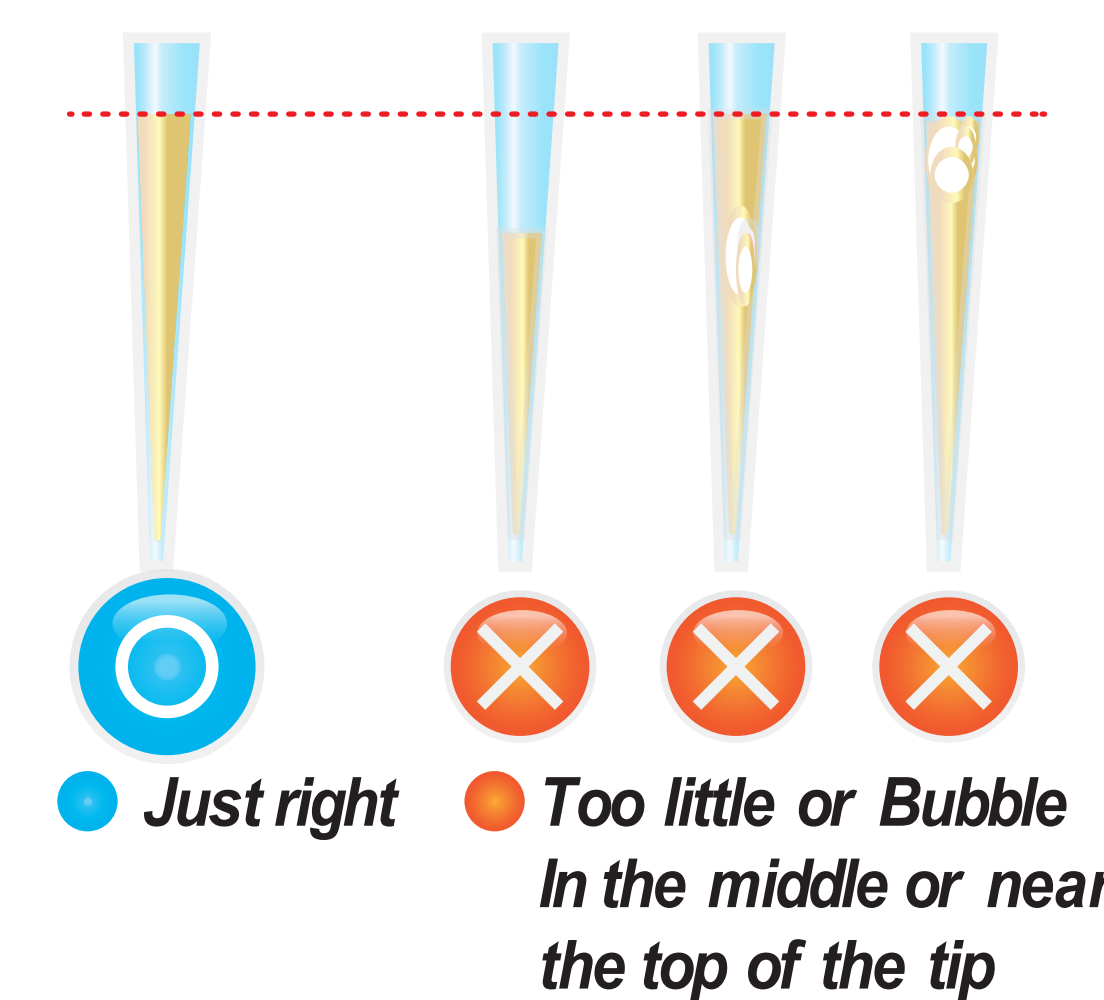
### 1 Draw the diluent from diluent vial 100 µL



### 2 Add it into detection buffer tube



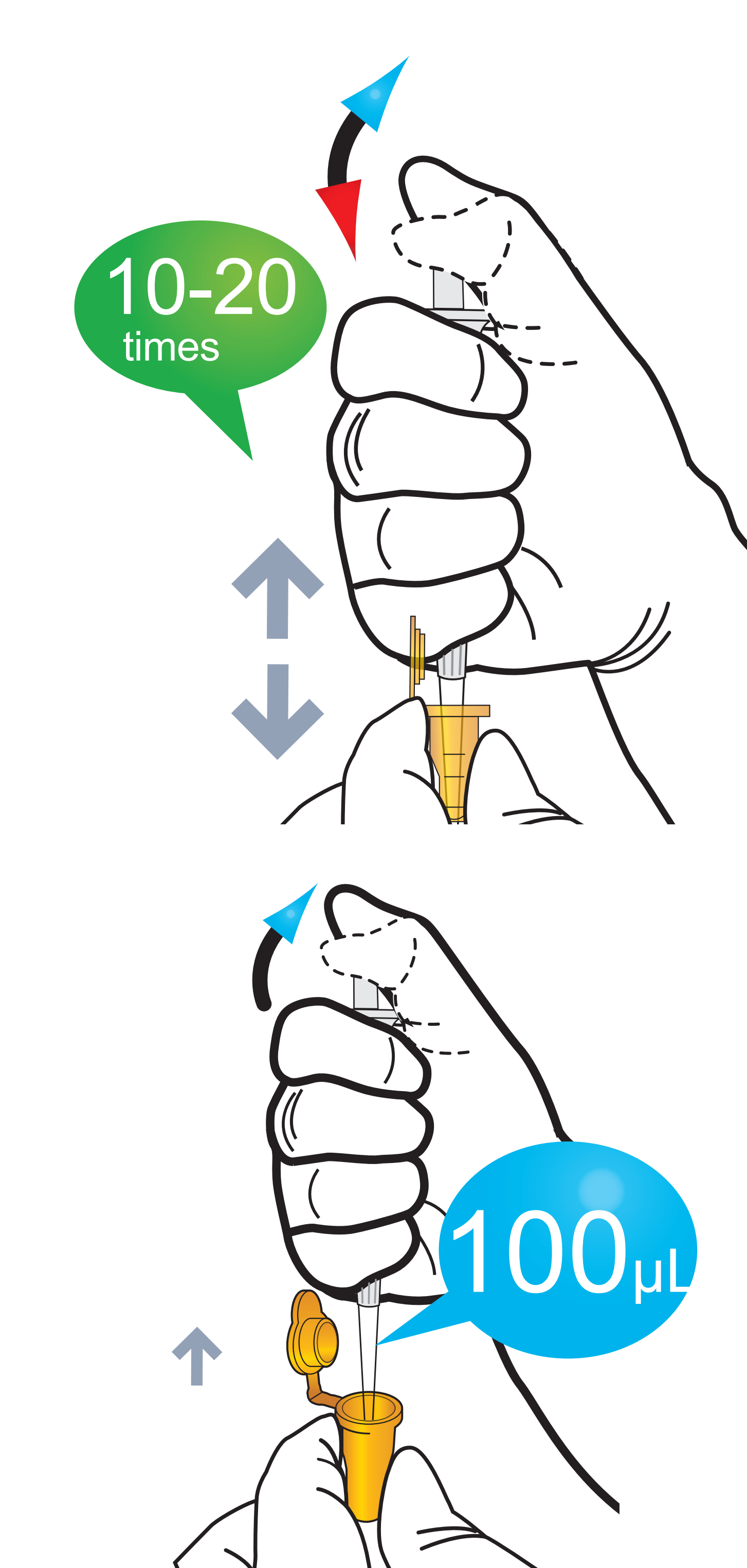
### 3 Draw 50 µL (Serum / Plasma / Control)



### 4 Add it into detection buffer tube



### 5 Mix well by pipetting 10-20 times.



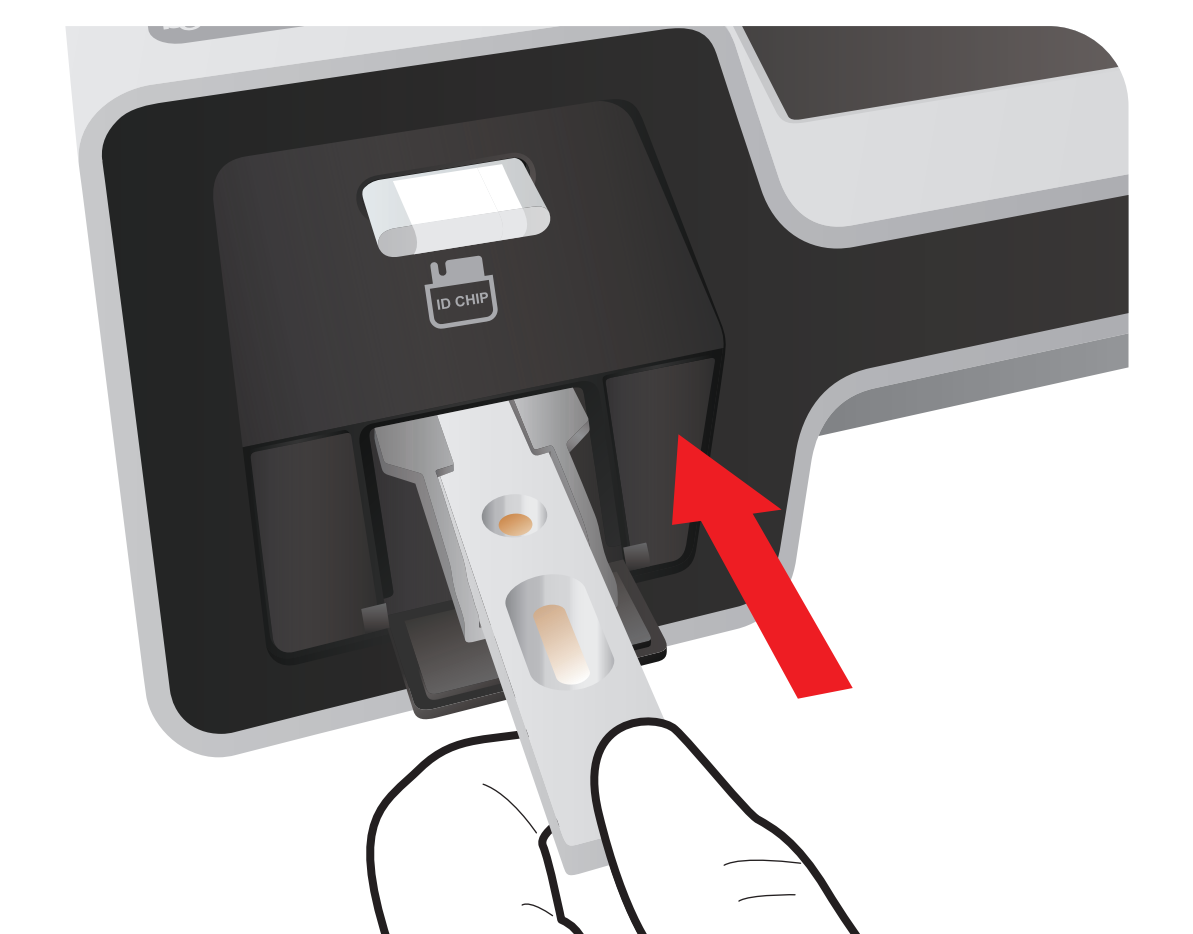
### 6 Load the sample Mixture



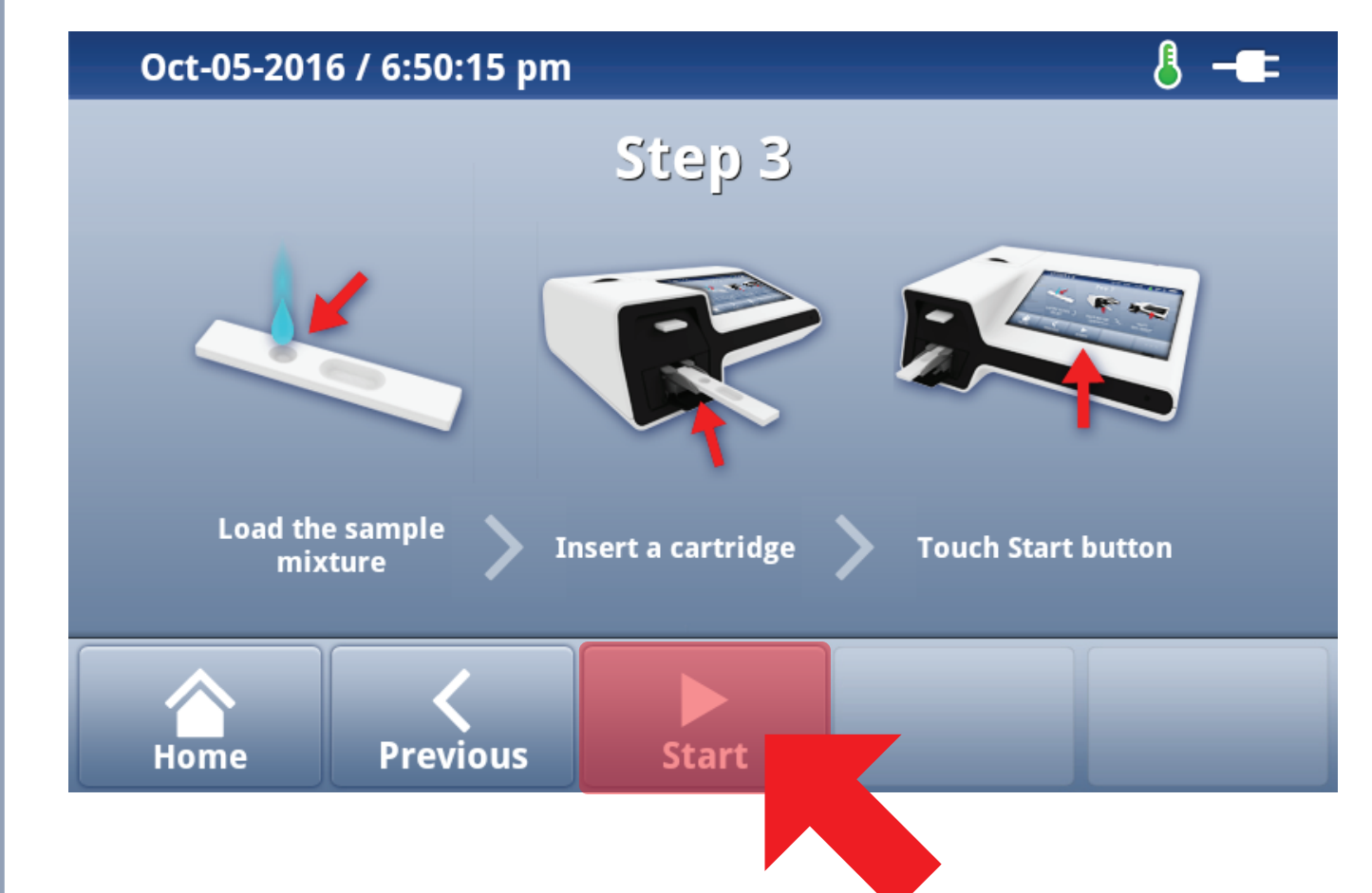
### 7 Waiting 15 minutes



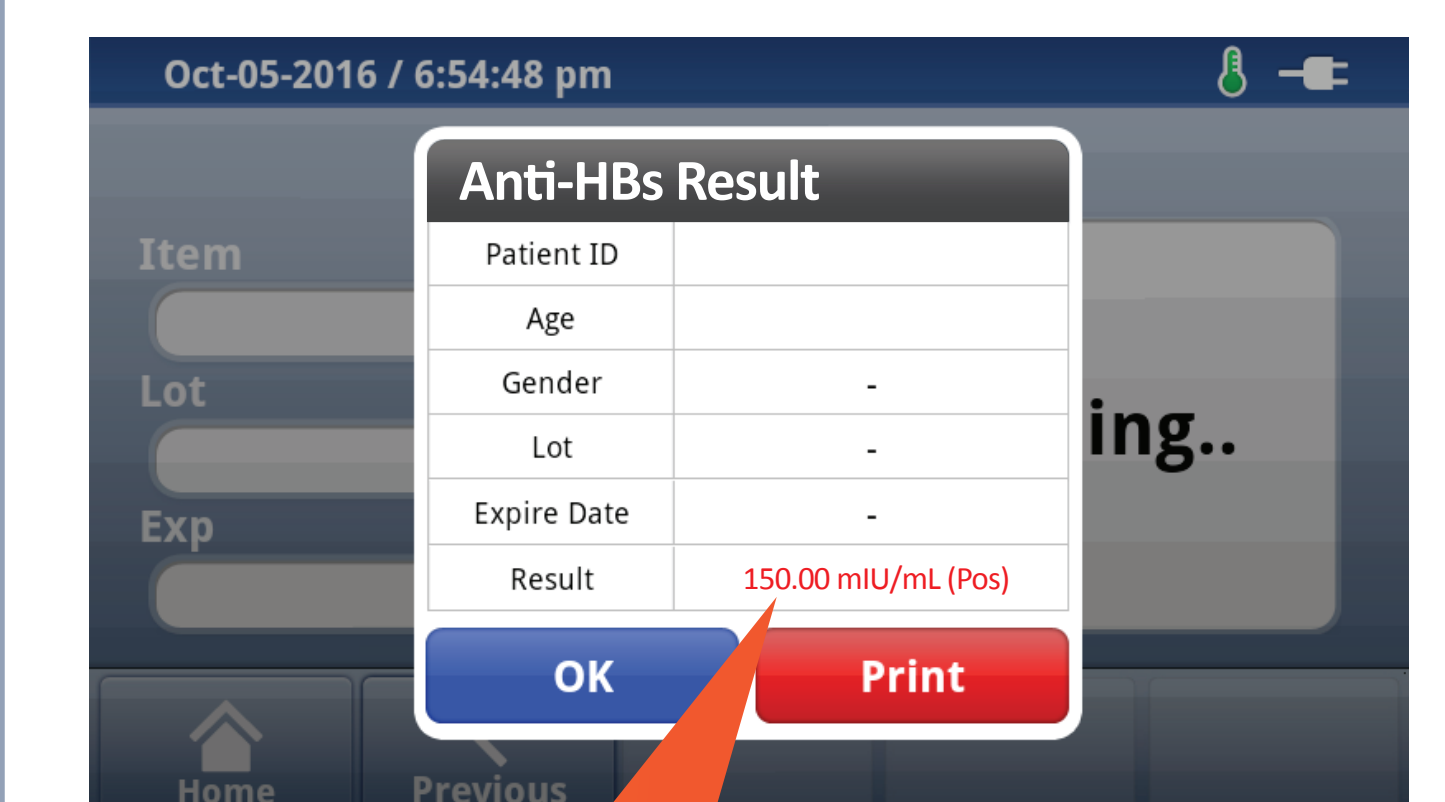
### 8 Insert the test cartridge



### 9 Press 'Select'



### 10 Read the test result



Result