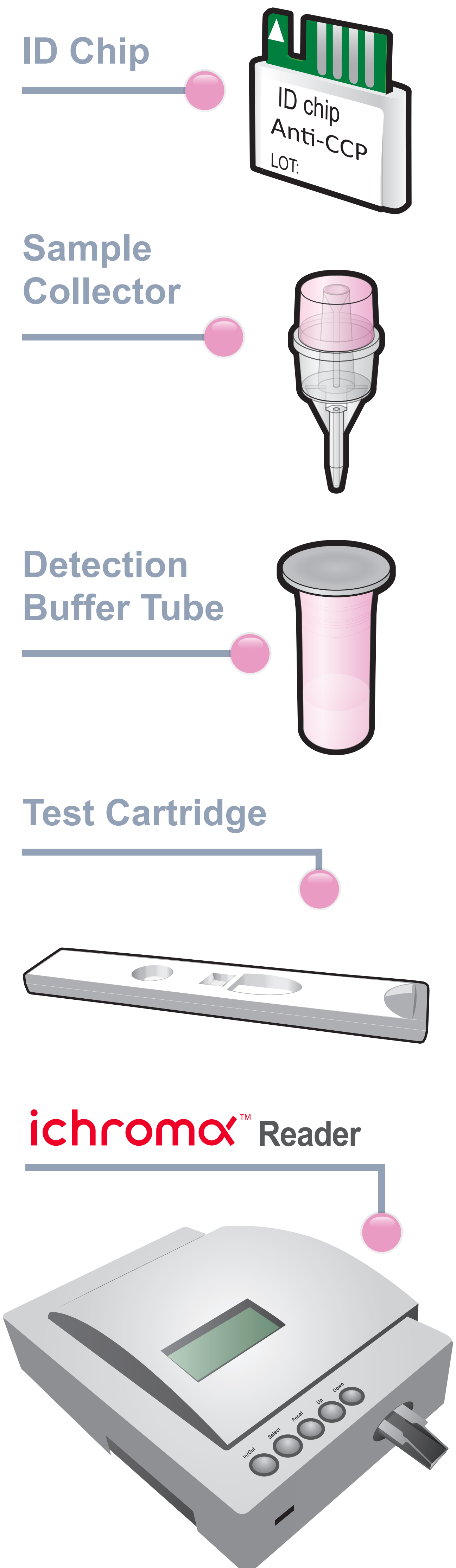


ichromα™ Anti-CCP

Test Setup

Test Components

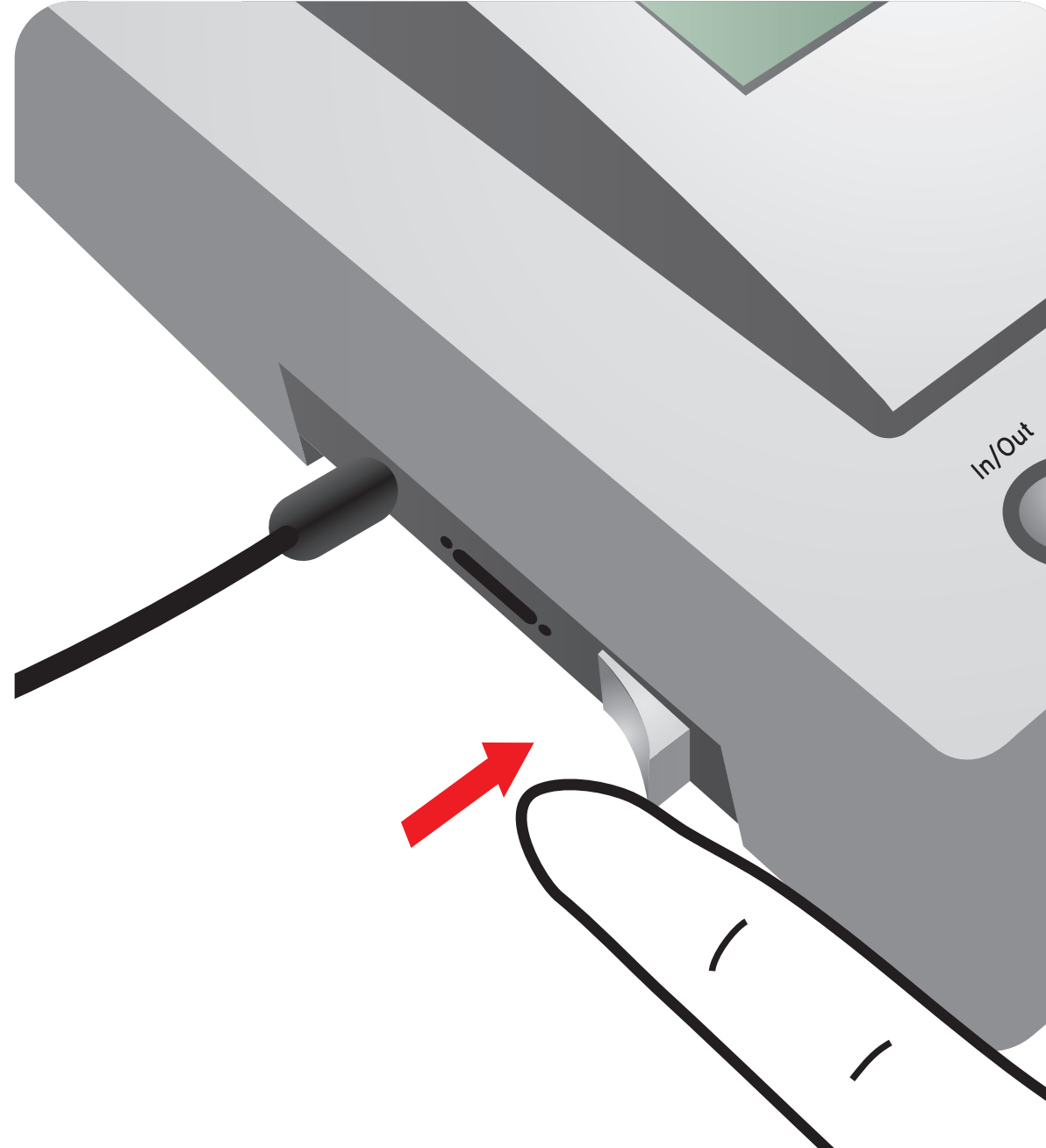


Important

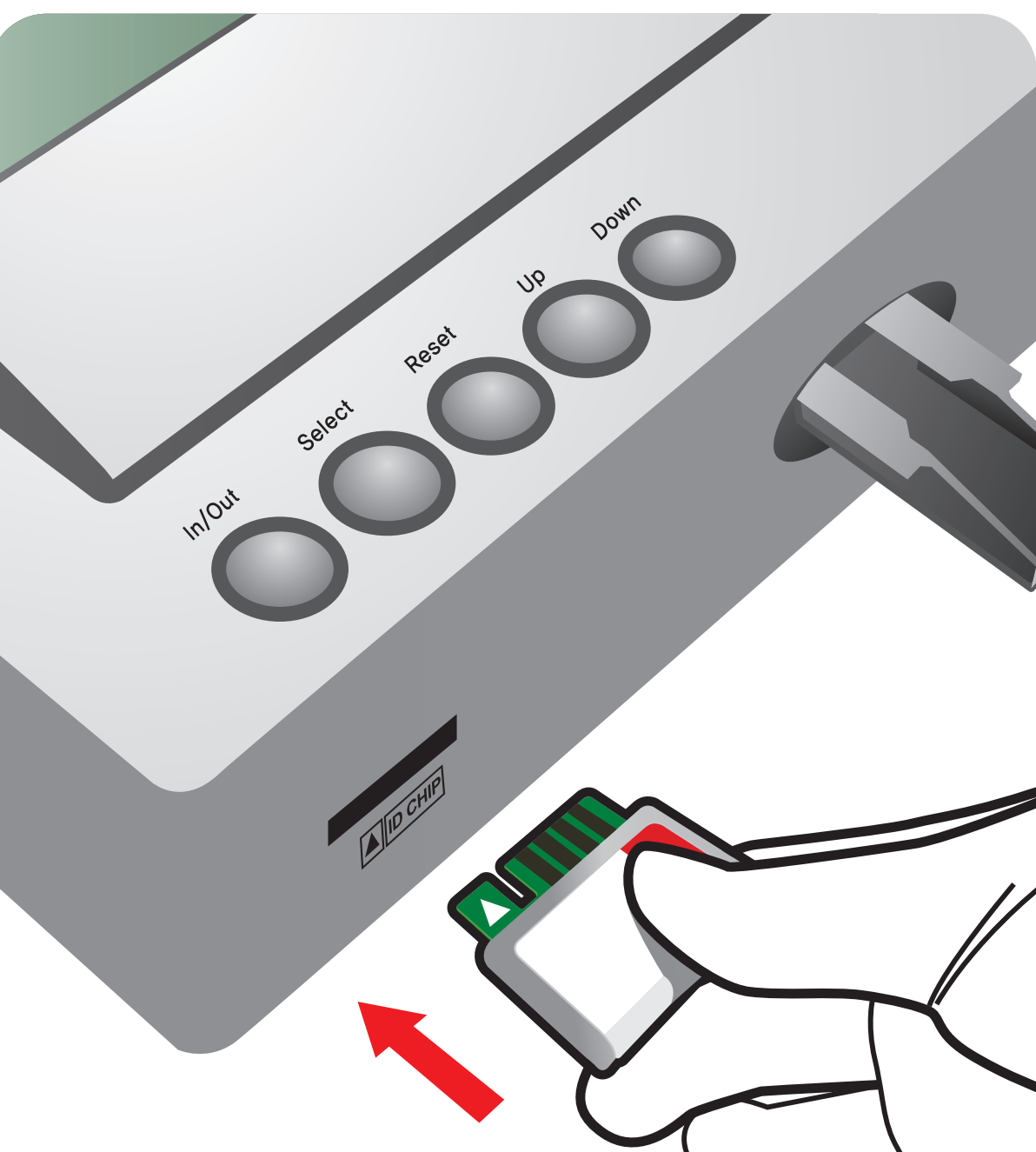
Allow 'Detection Buffer Tube' to attain room temperature at least for 30 minutes before performing the test

Make sure that lot number of the 'ID Chip' is exactly same as the lot number of 'Test Cartridge' and 'Detection Buffer Tube'

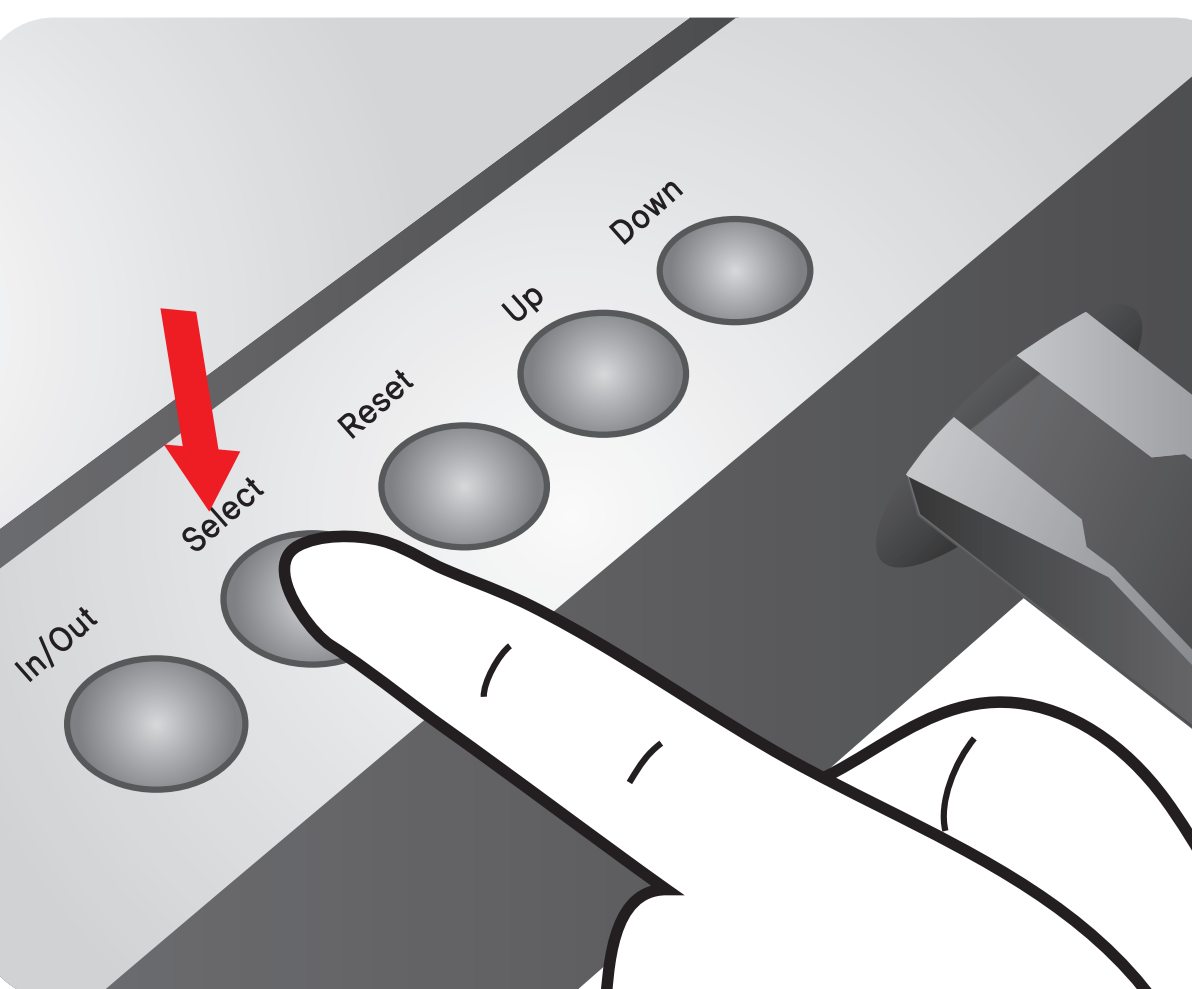
1 Turn the power switch 'On'



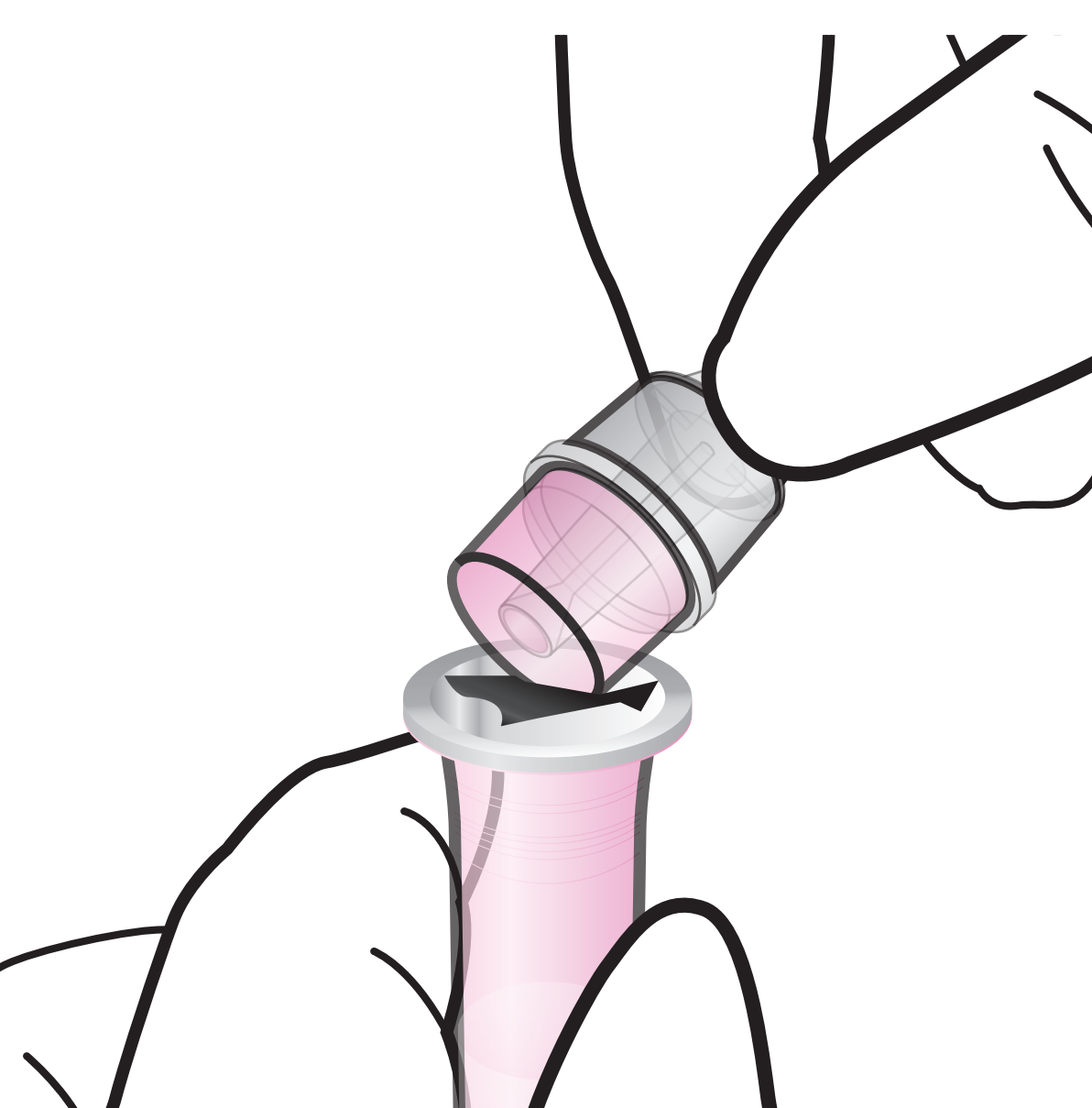
2 Insert ID Chip



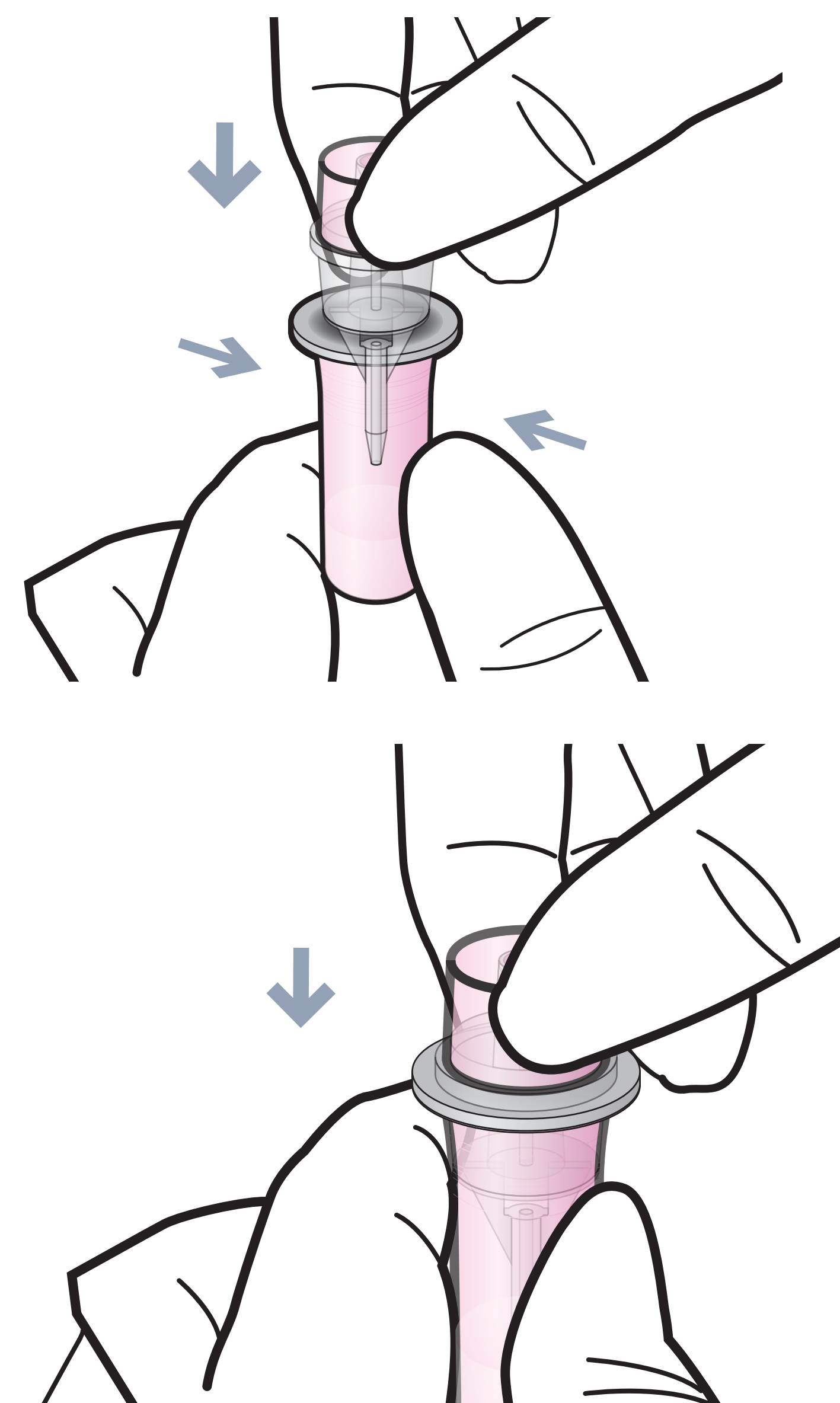
3 Press 'Select'



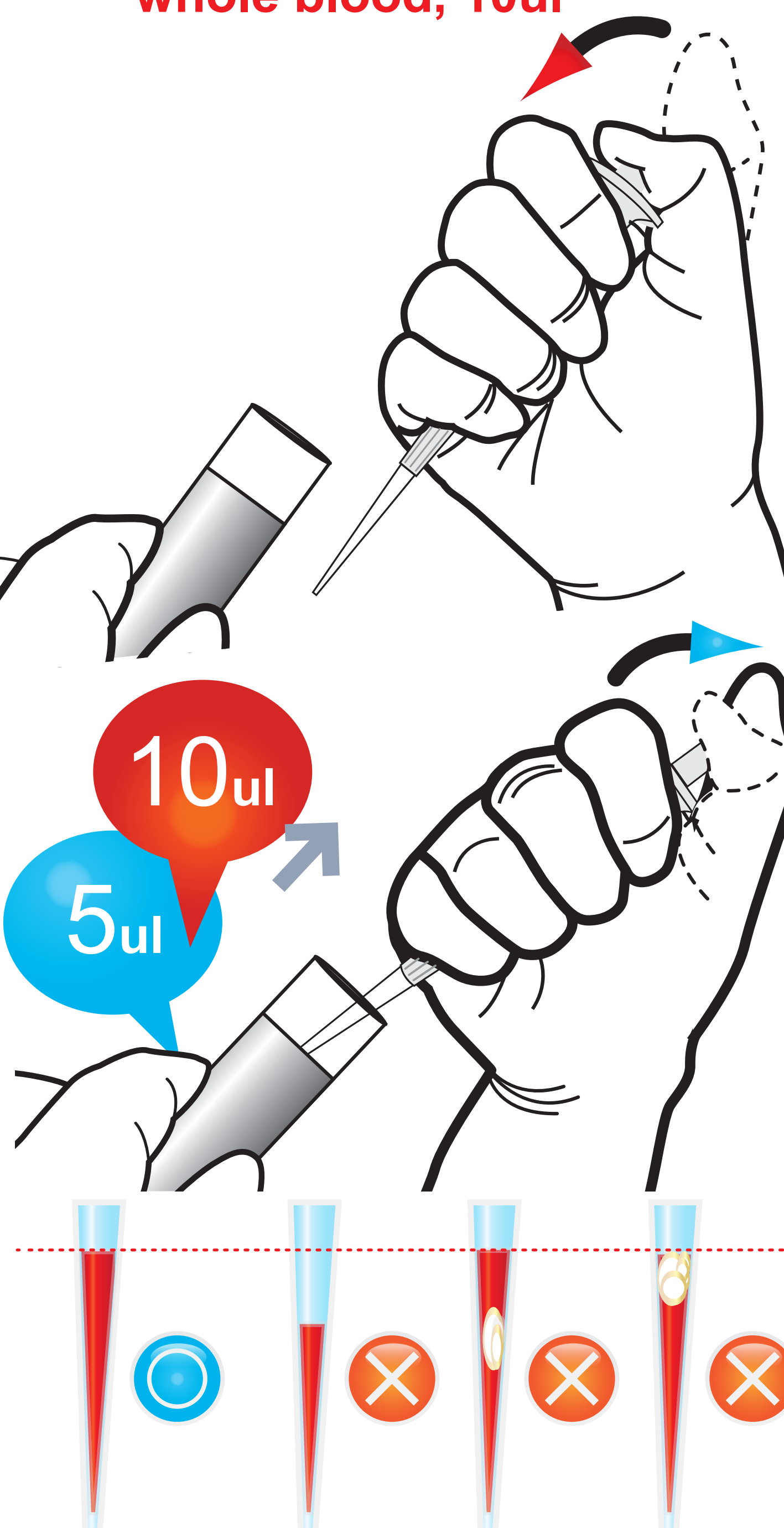
4 Make a Puncture



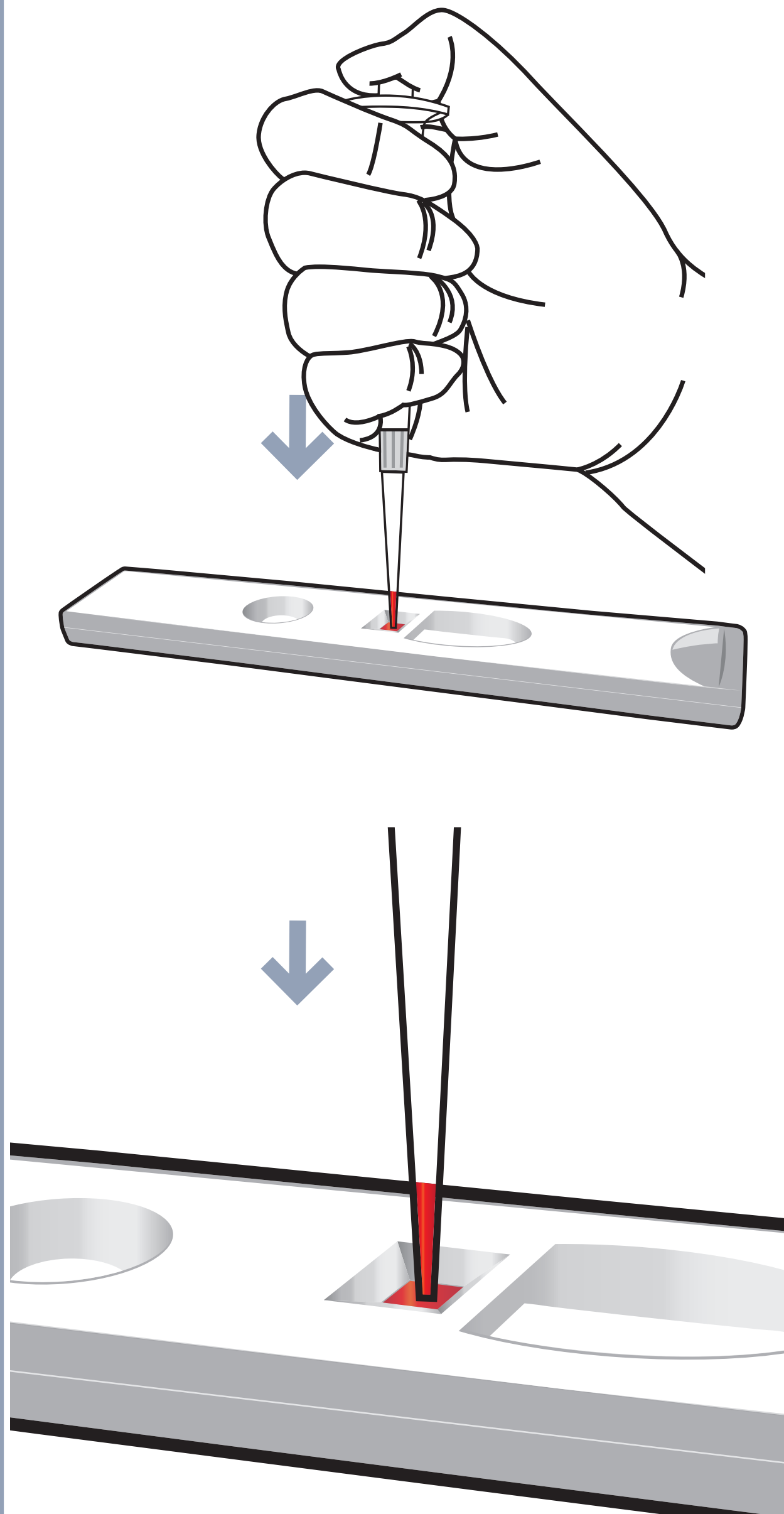
1 Assemble the sample collector with detection buffer tube



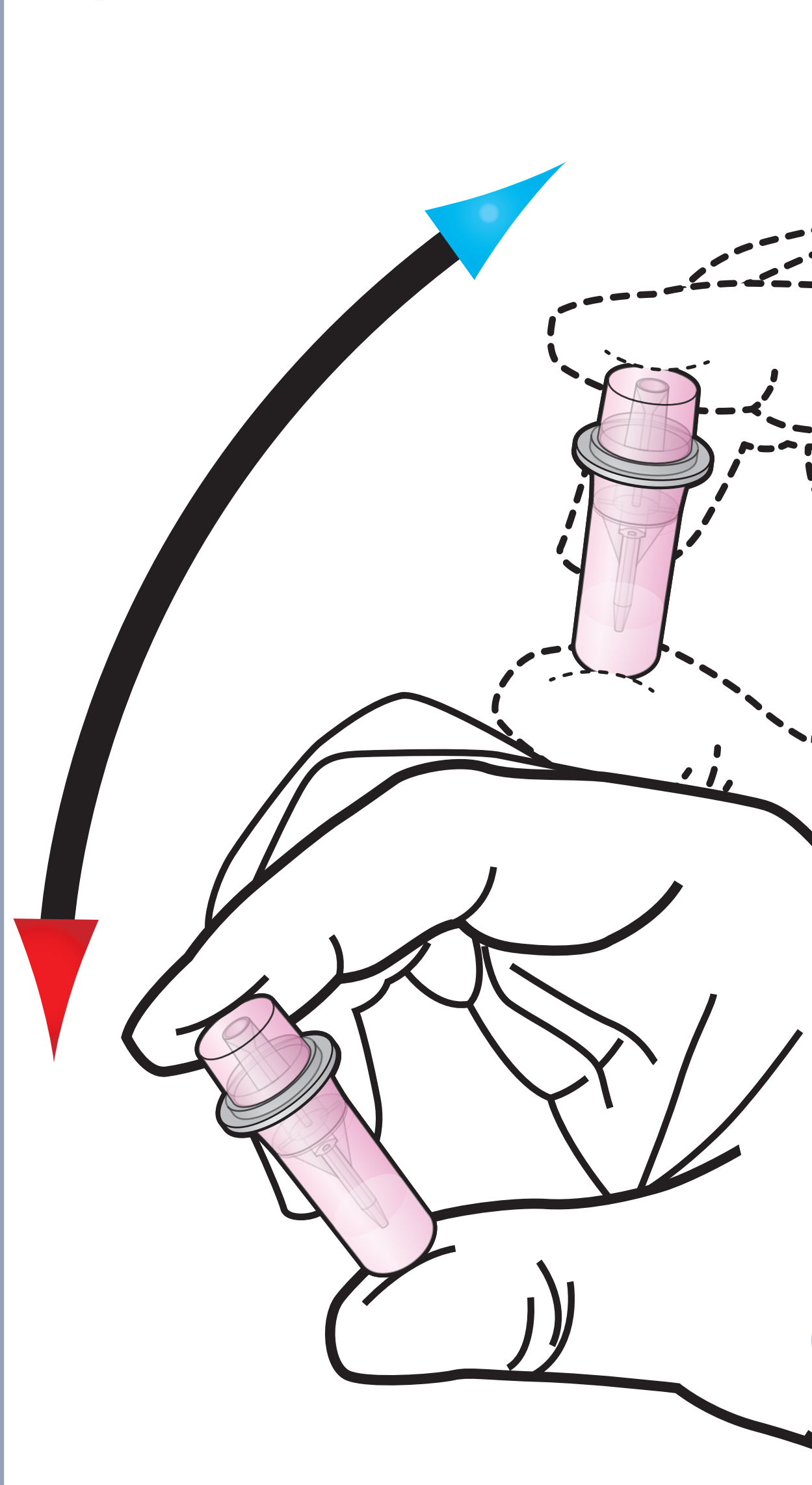
2 Draw the sample
Sampling:
human serum/plasma, 5ul
whole blood, 10ul



3 Load the sample onto the sample well



4 Shake the tube

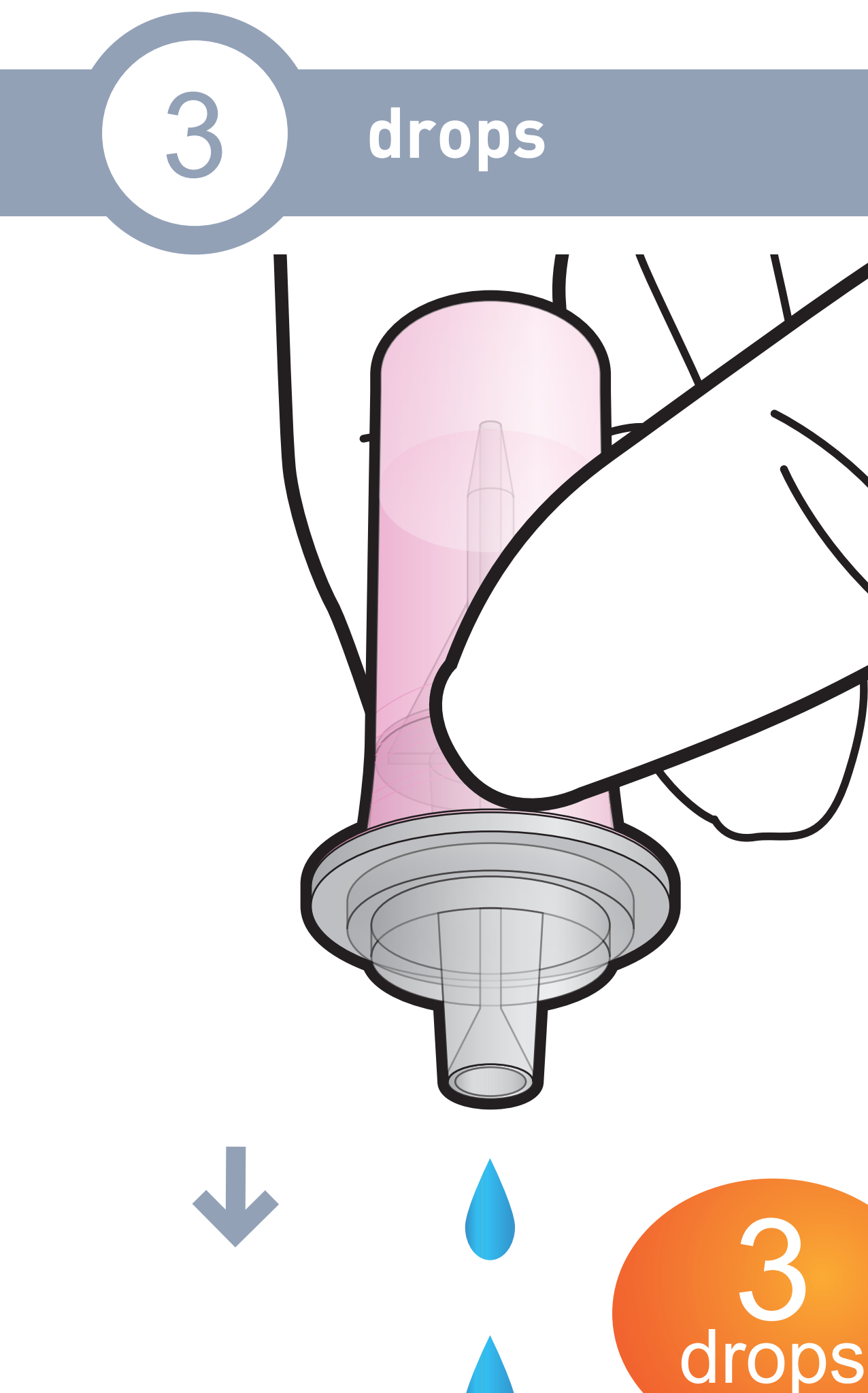


3 Times

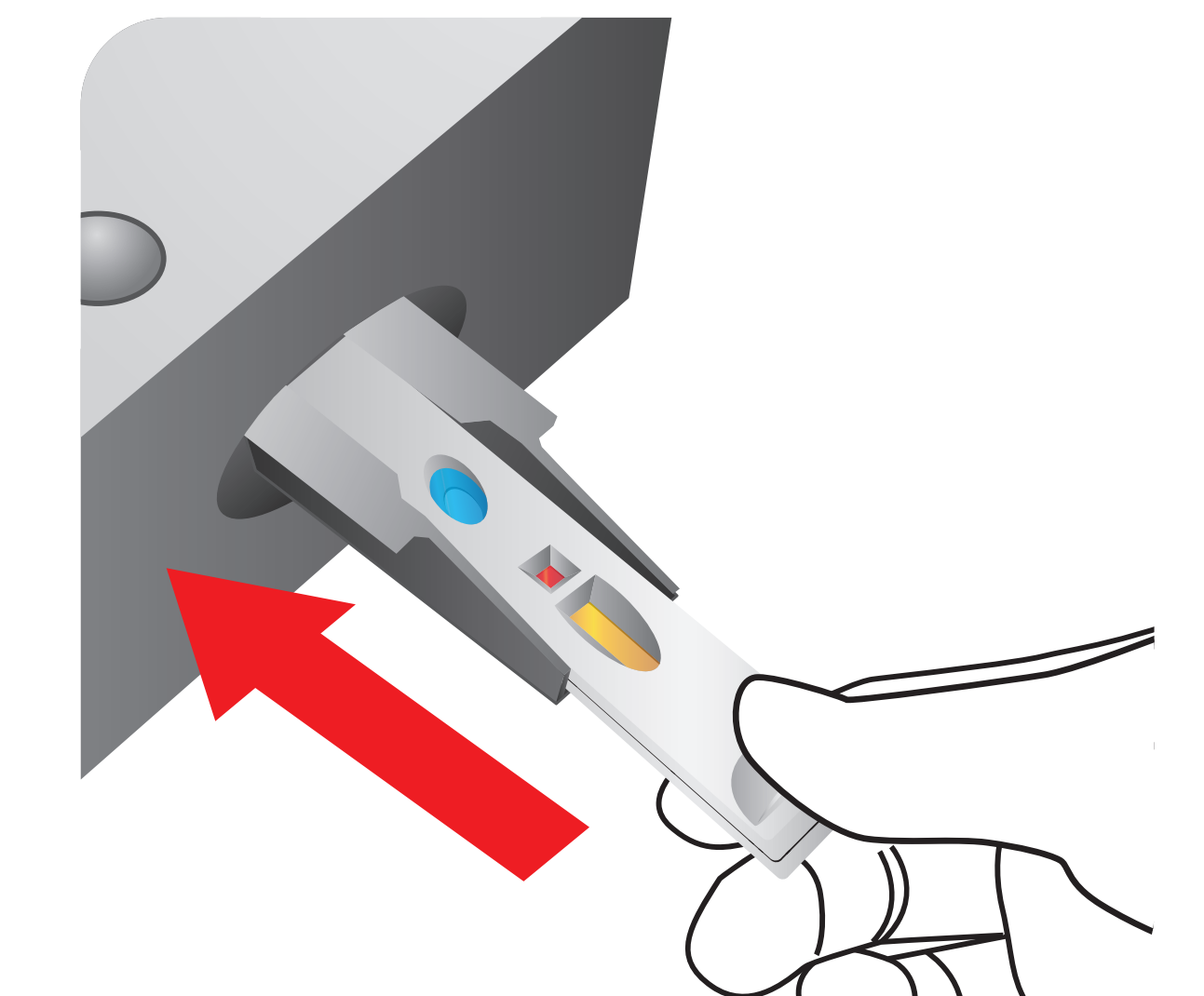
5 Discard one drop



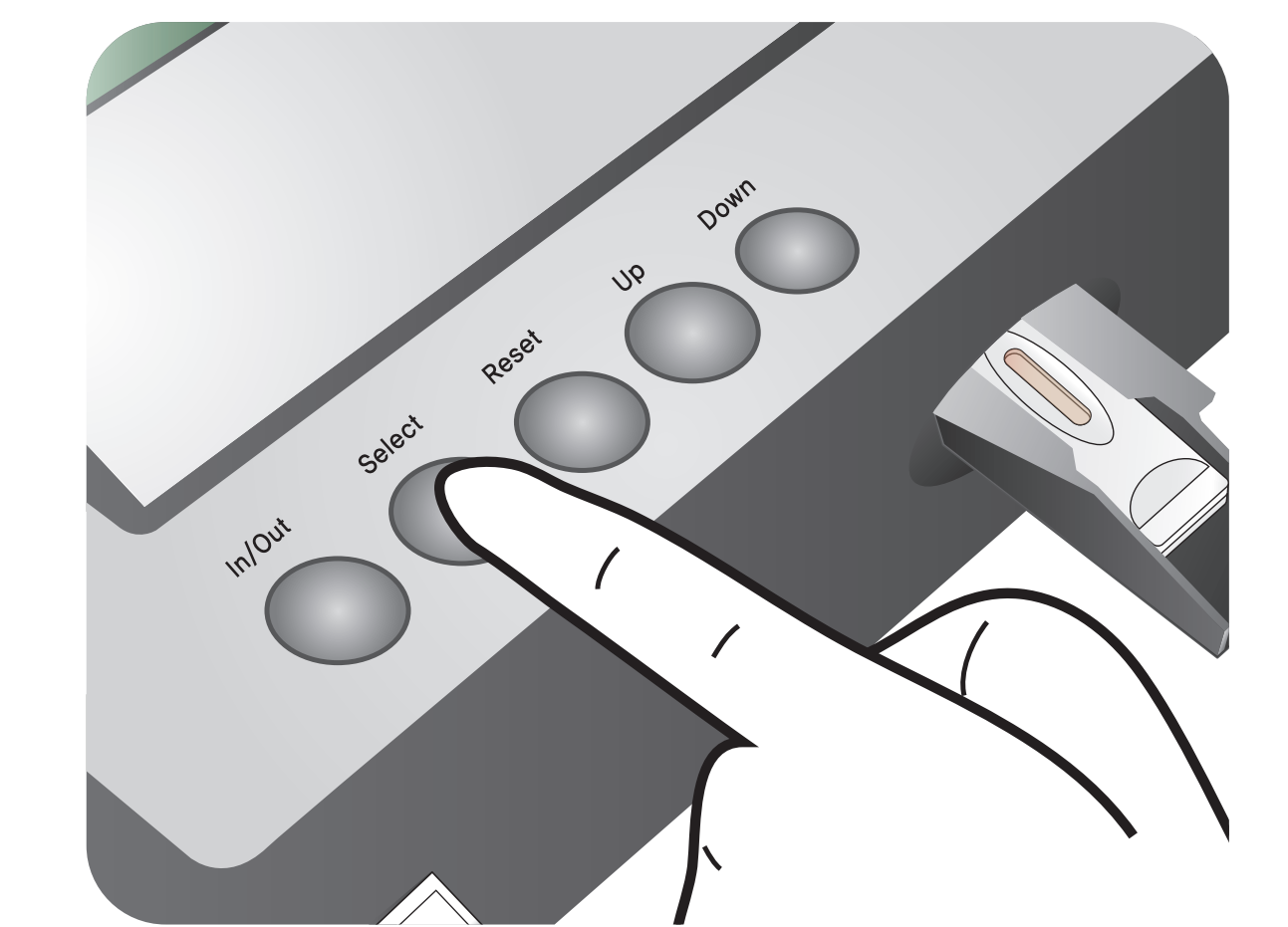
6 Load the detection buffer into the DB well



7 Insert the test cartridge



8 Press 'Select'



12 mins

After 12 minutes

9 Read the test result

