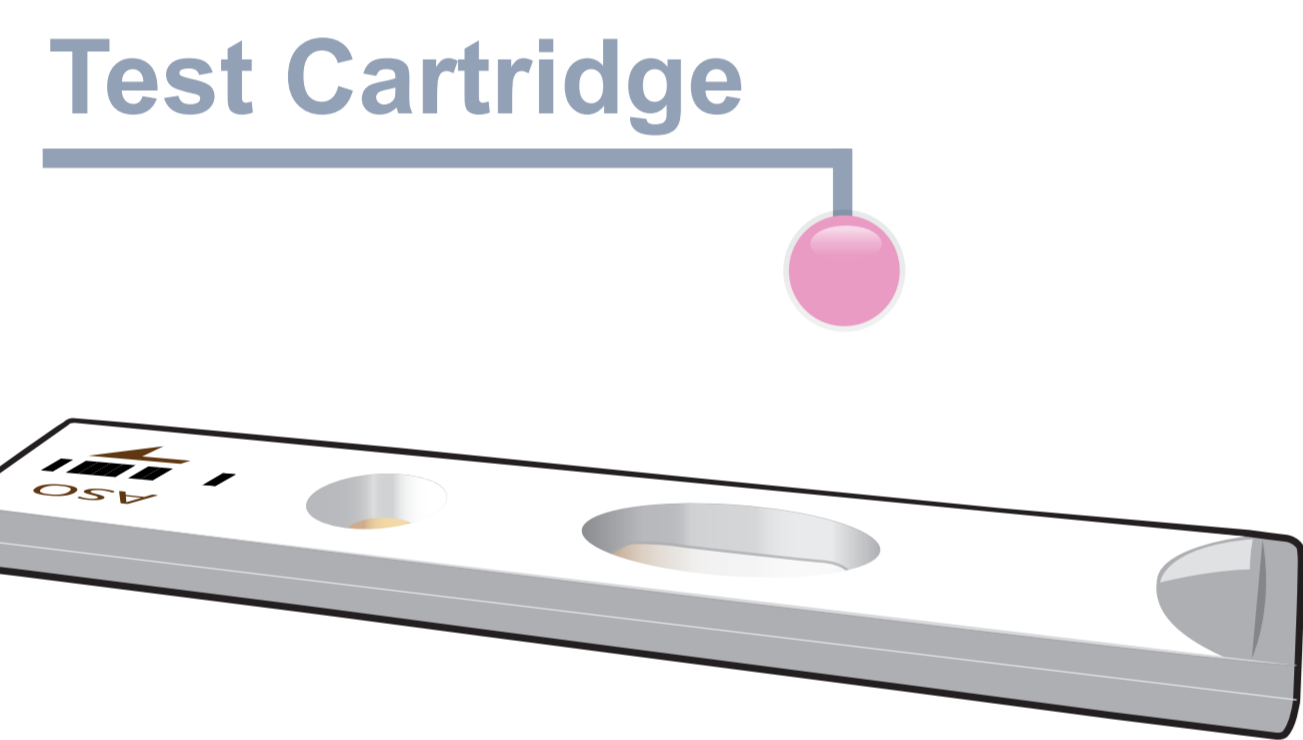
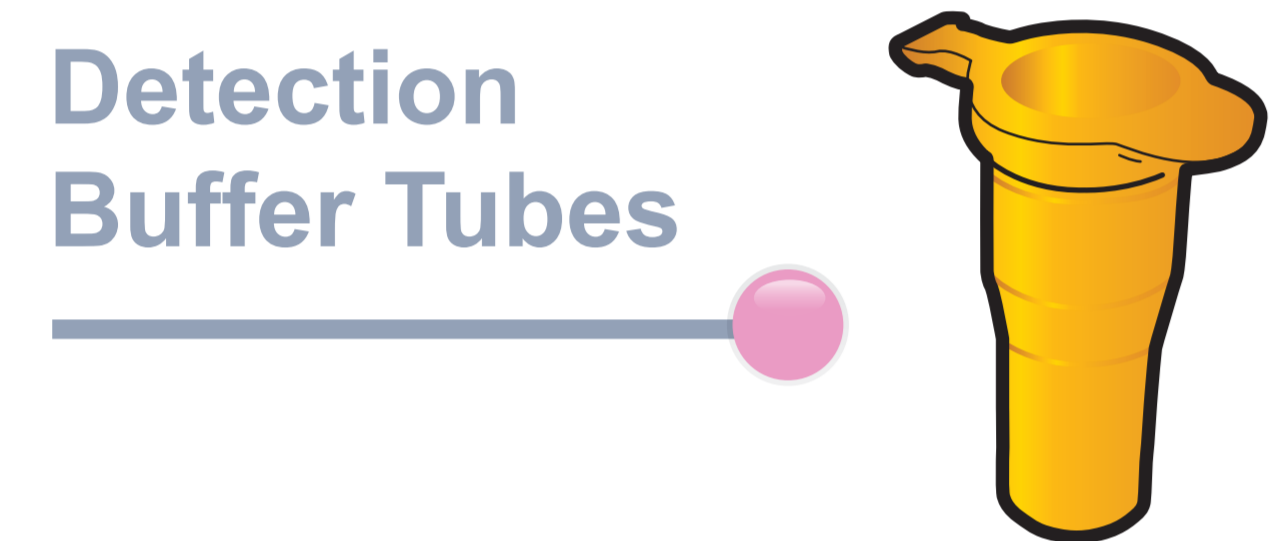
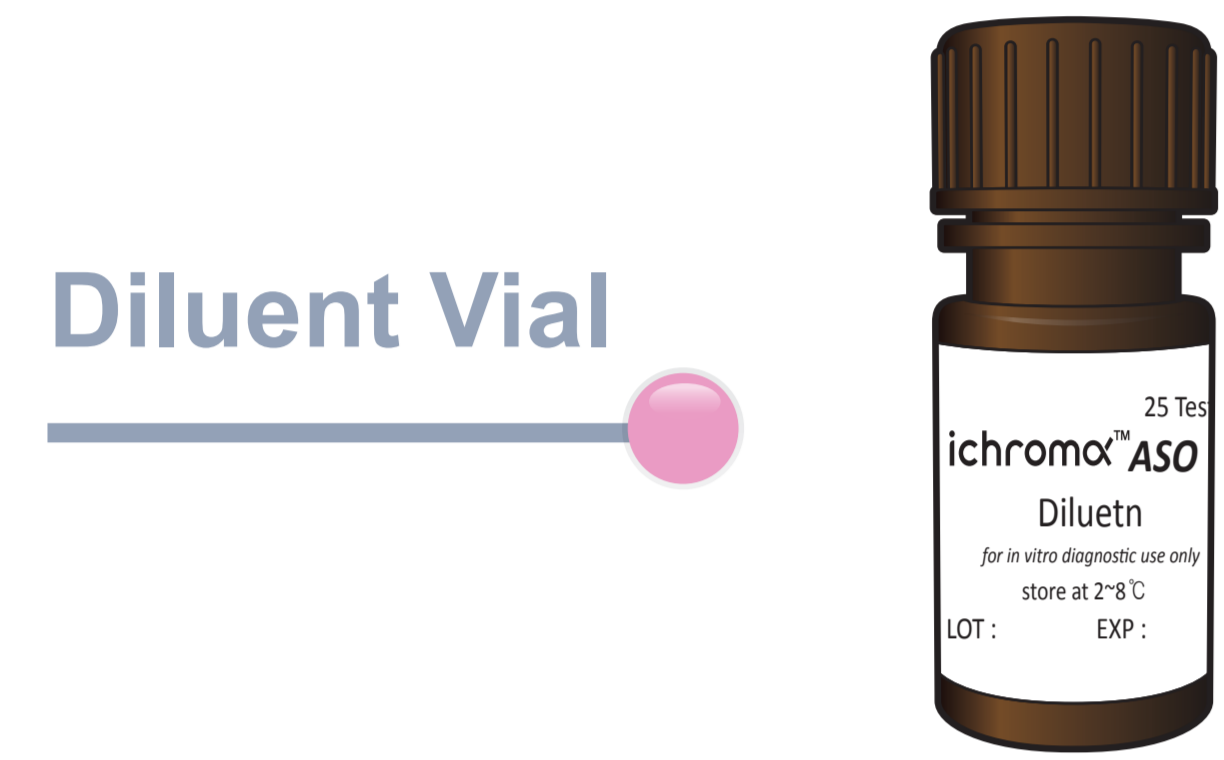
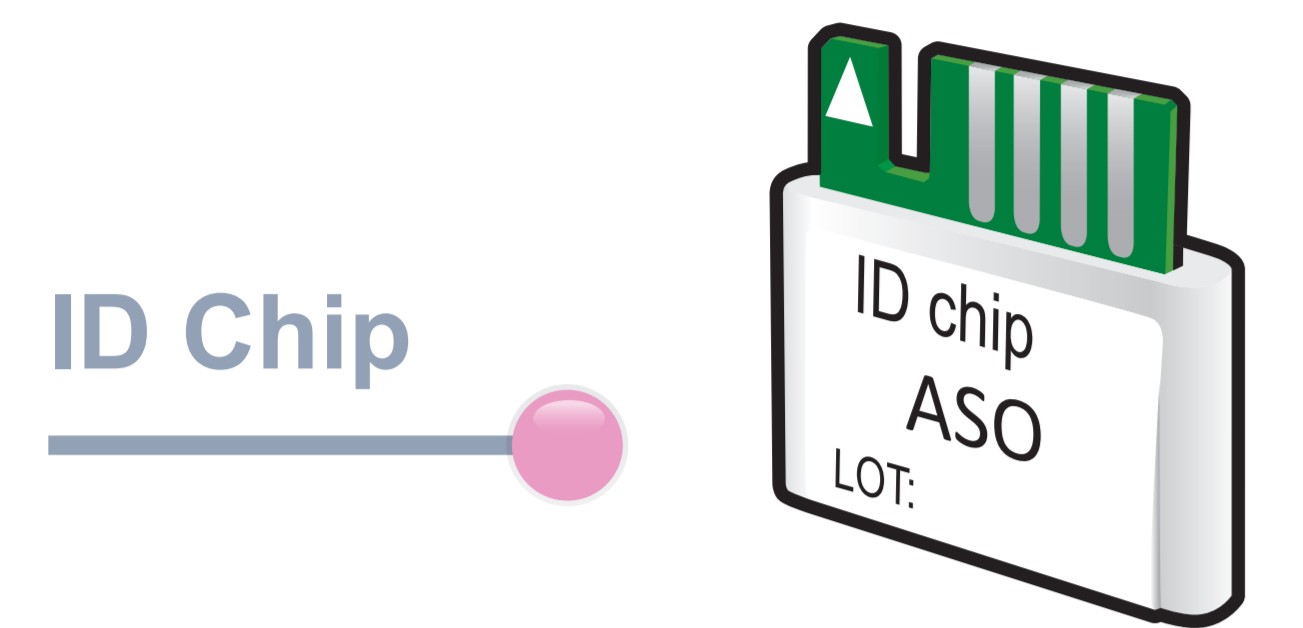


## Test Setup

### Test Components

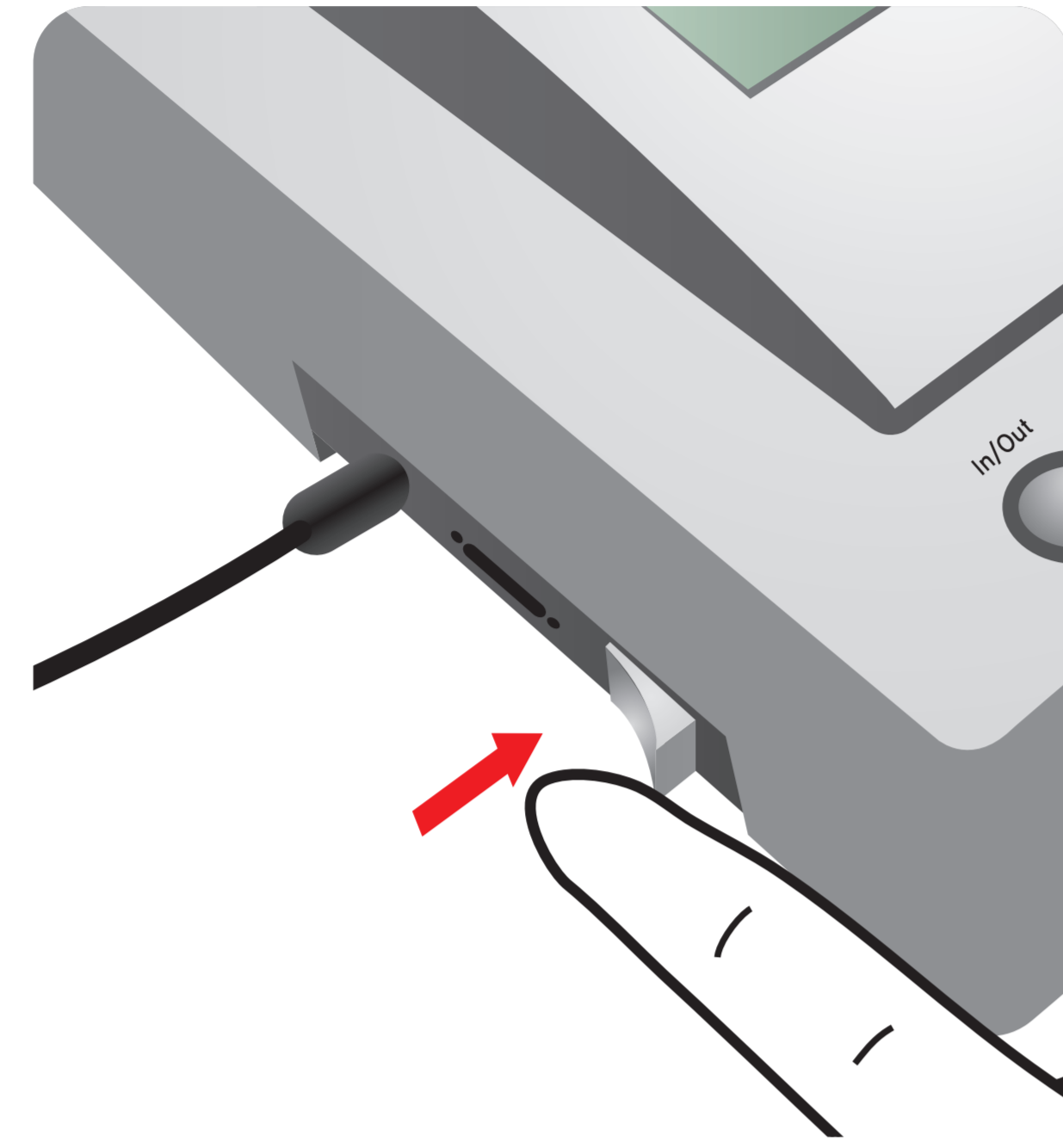


### Important

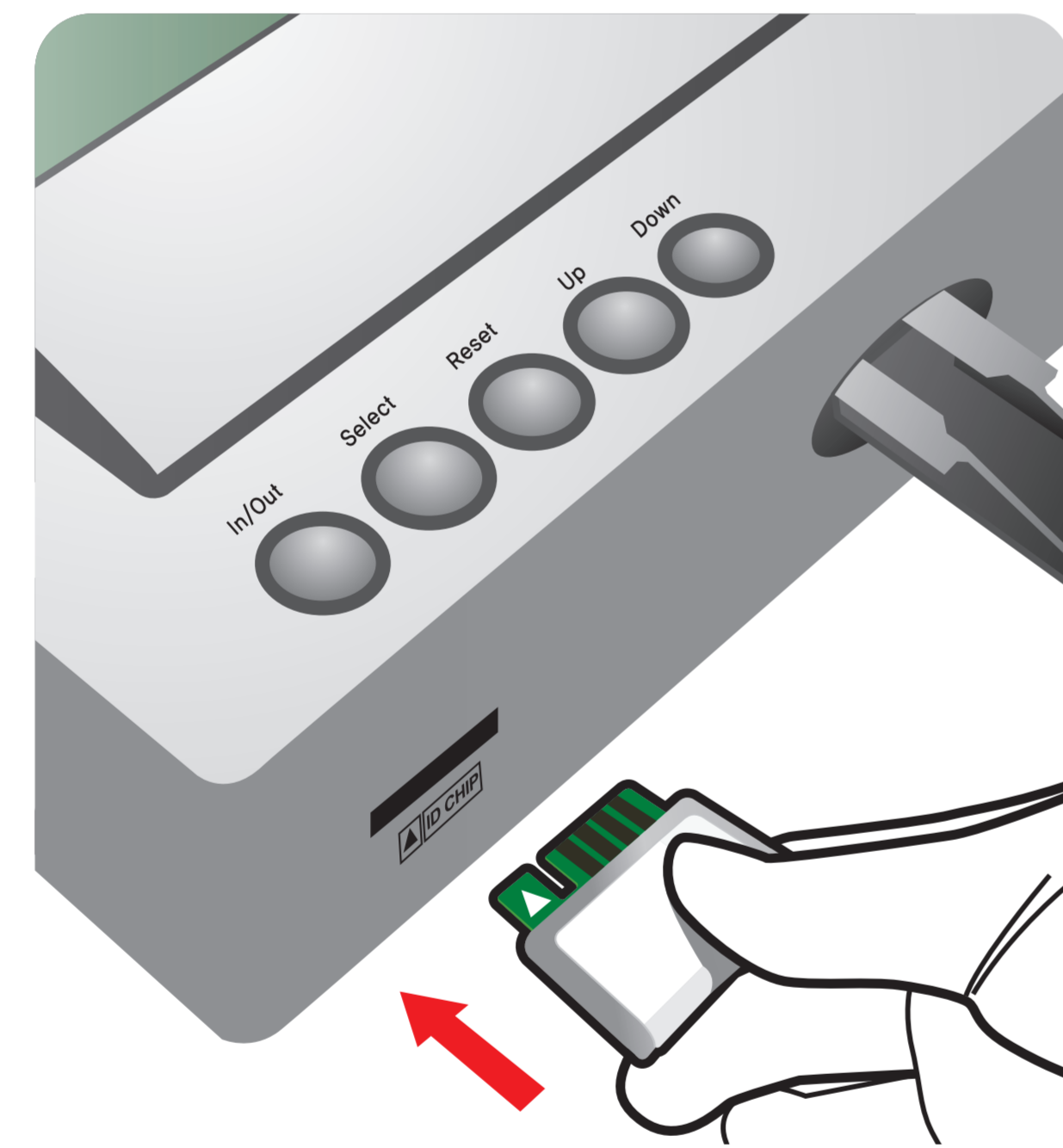
Allow 'Detection Buffer Tube' to attain room temperature at least for 30 minutes before performing the test

Make sure that lot number of the 'ID Chip' is exactly same as the lot number of 'Test Cartridge' and 'Detection Buffer Tube'

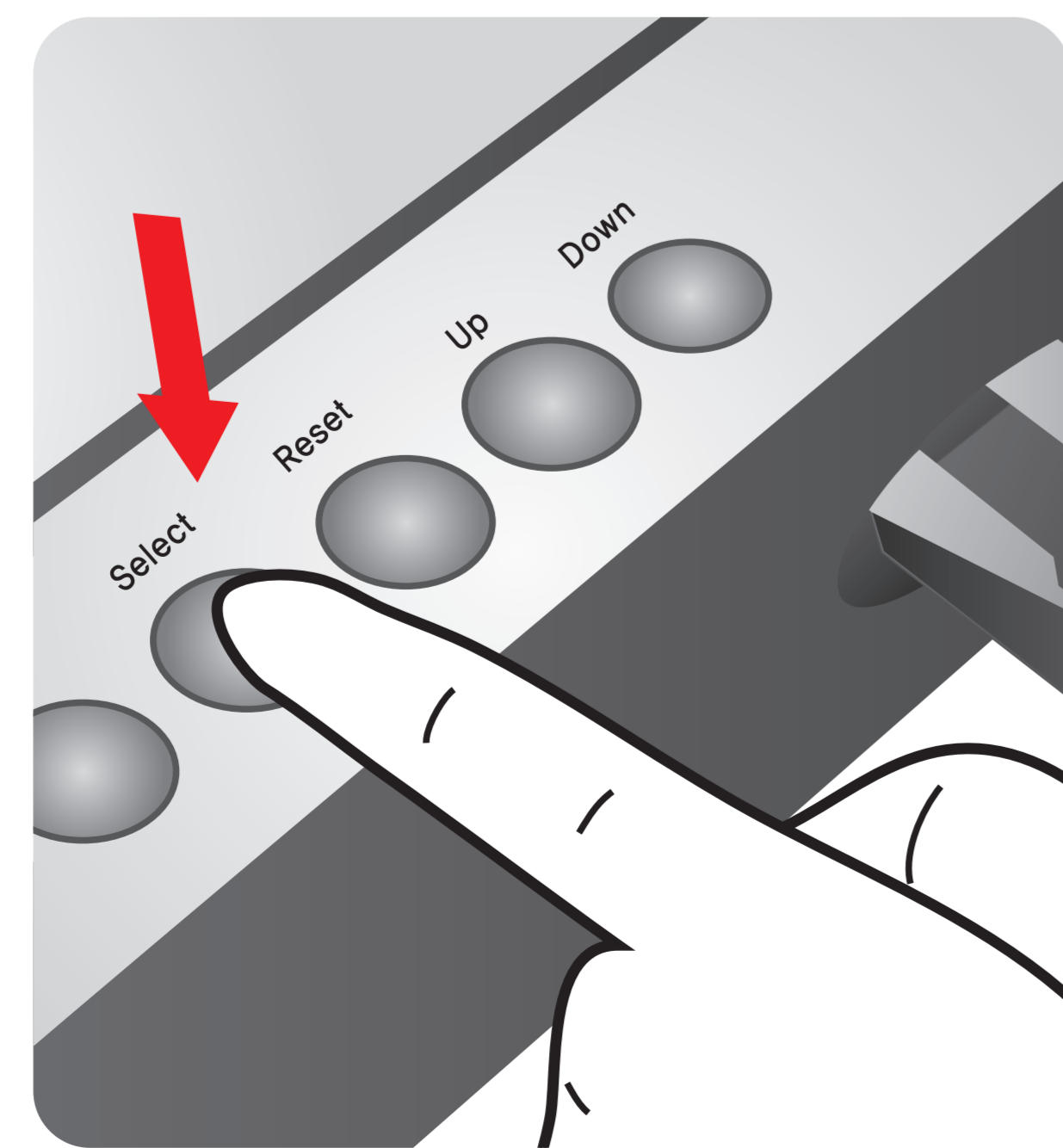
**1** Turn the power switch 'On'



**2** Insert ID Chip

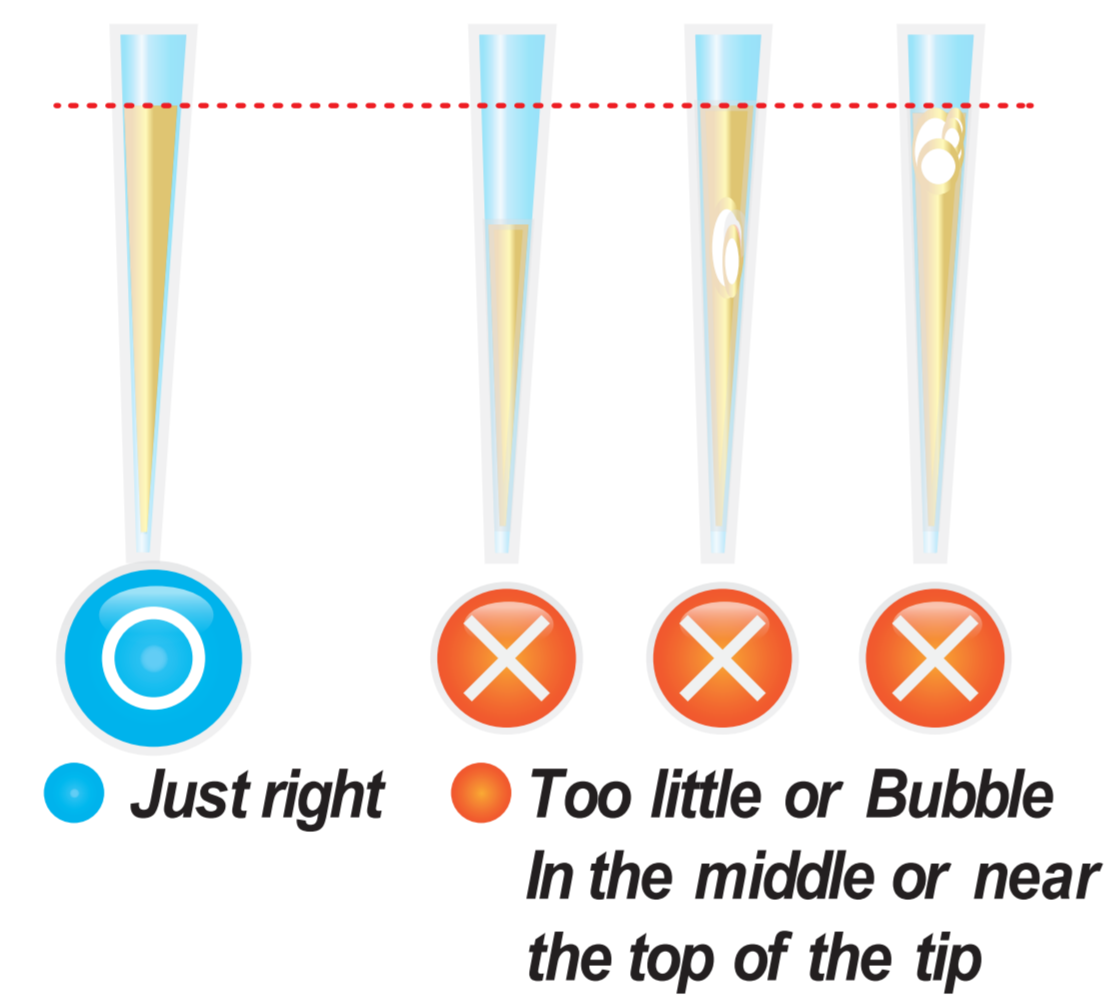


**3** Press 'Select'

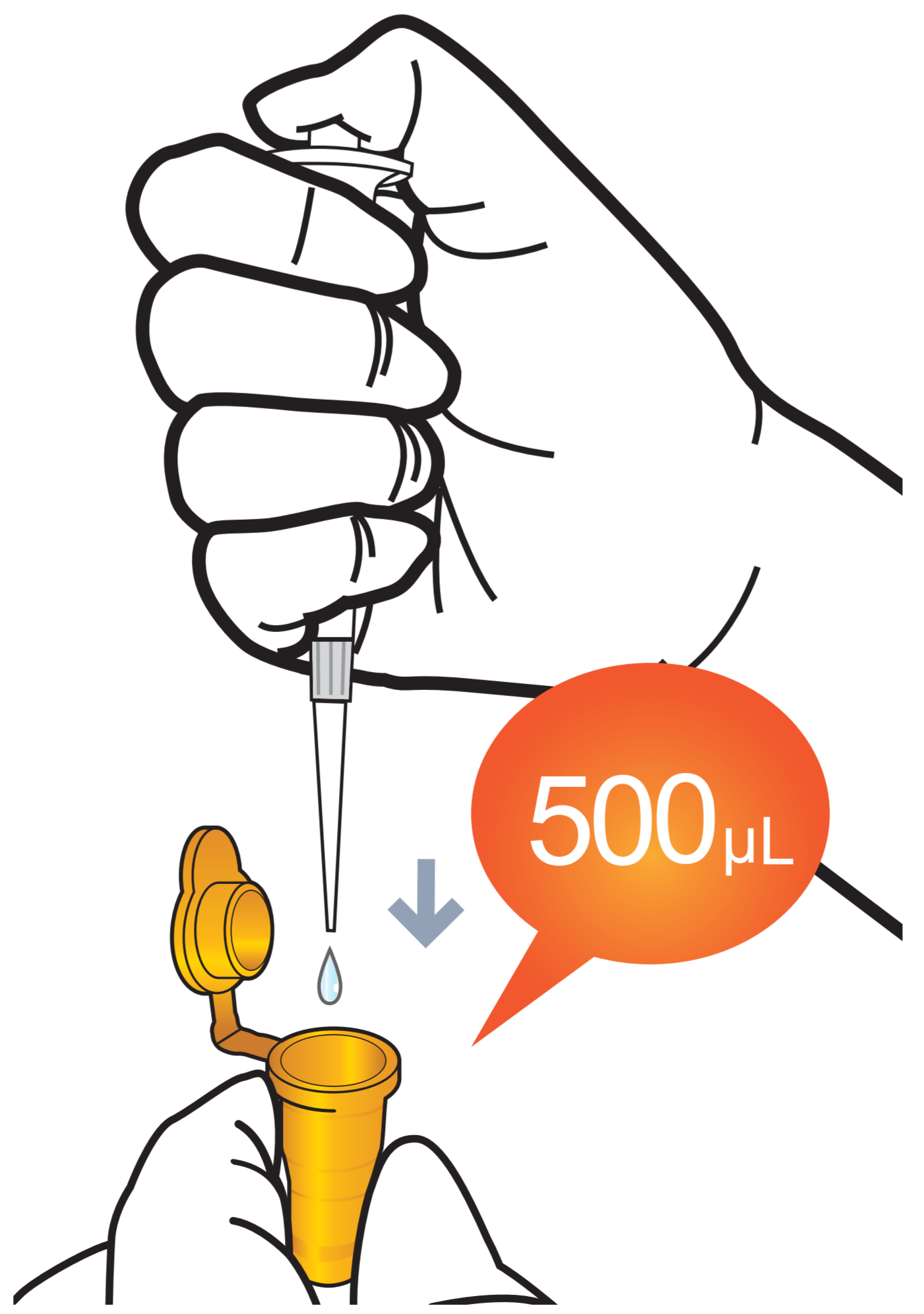


## Test Procedure

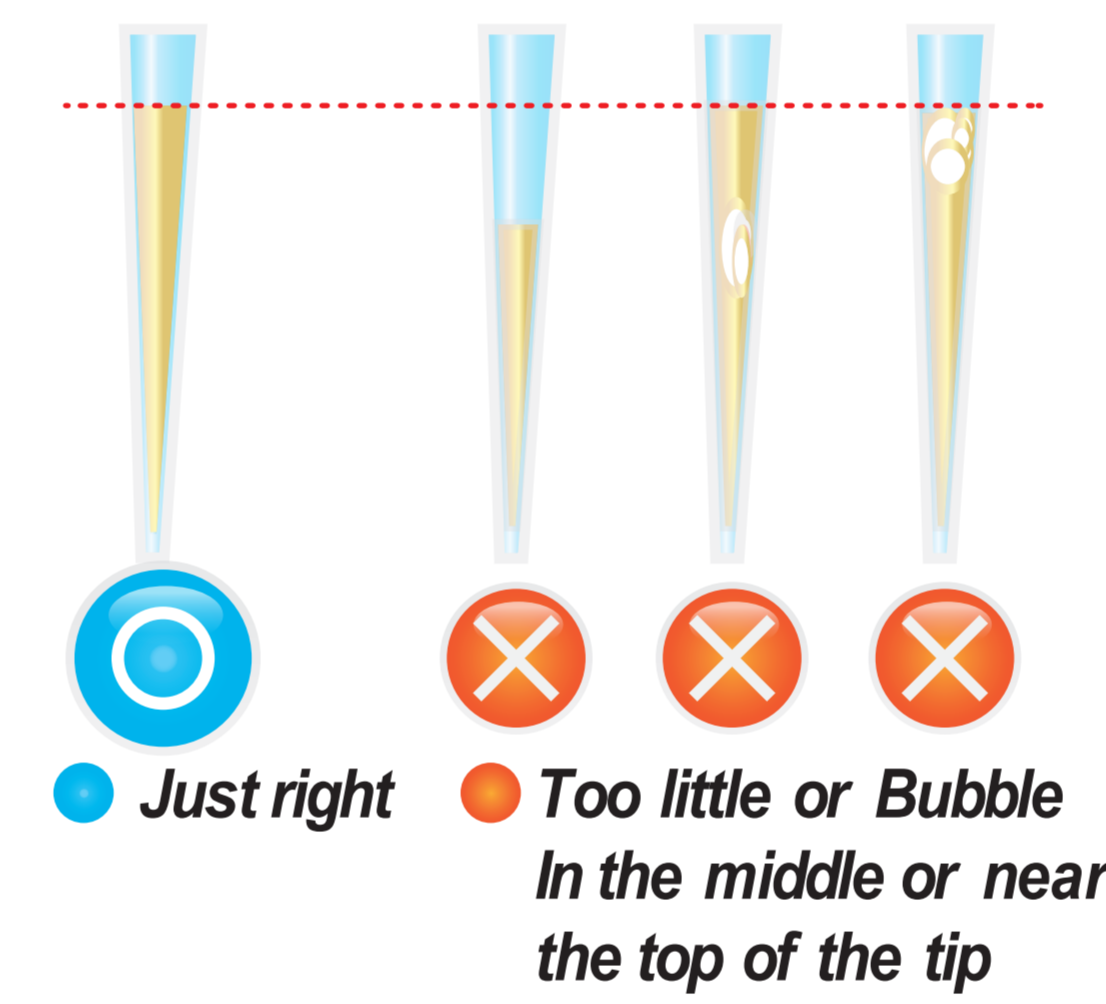
**1** Draw 500  $\mu$ L (Diluent Vial)



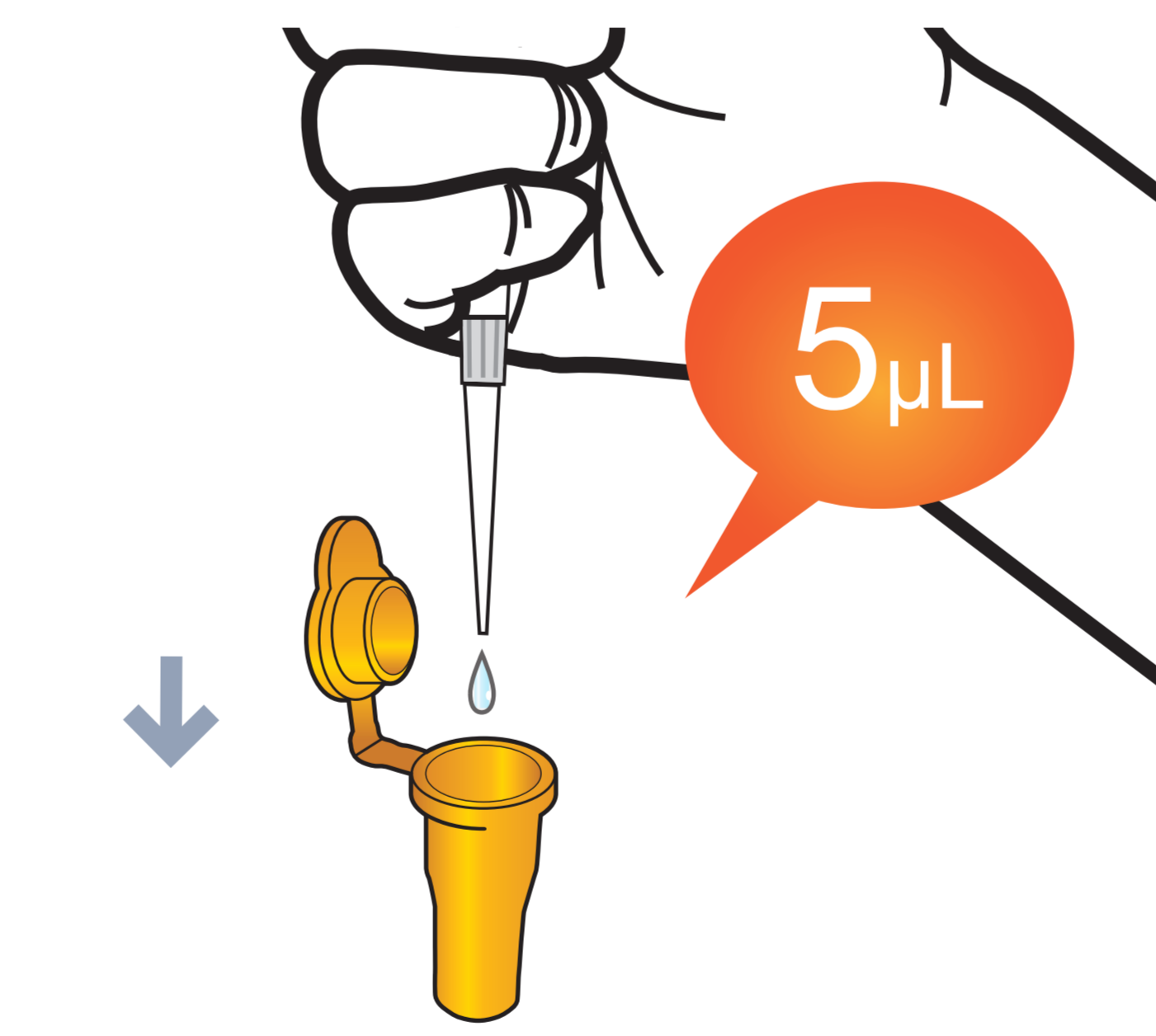
**2** Add it into detection buffer tube



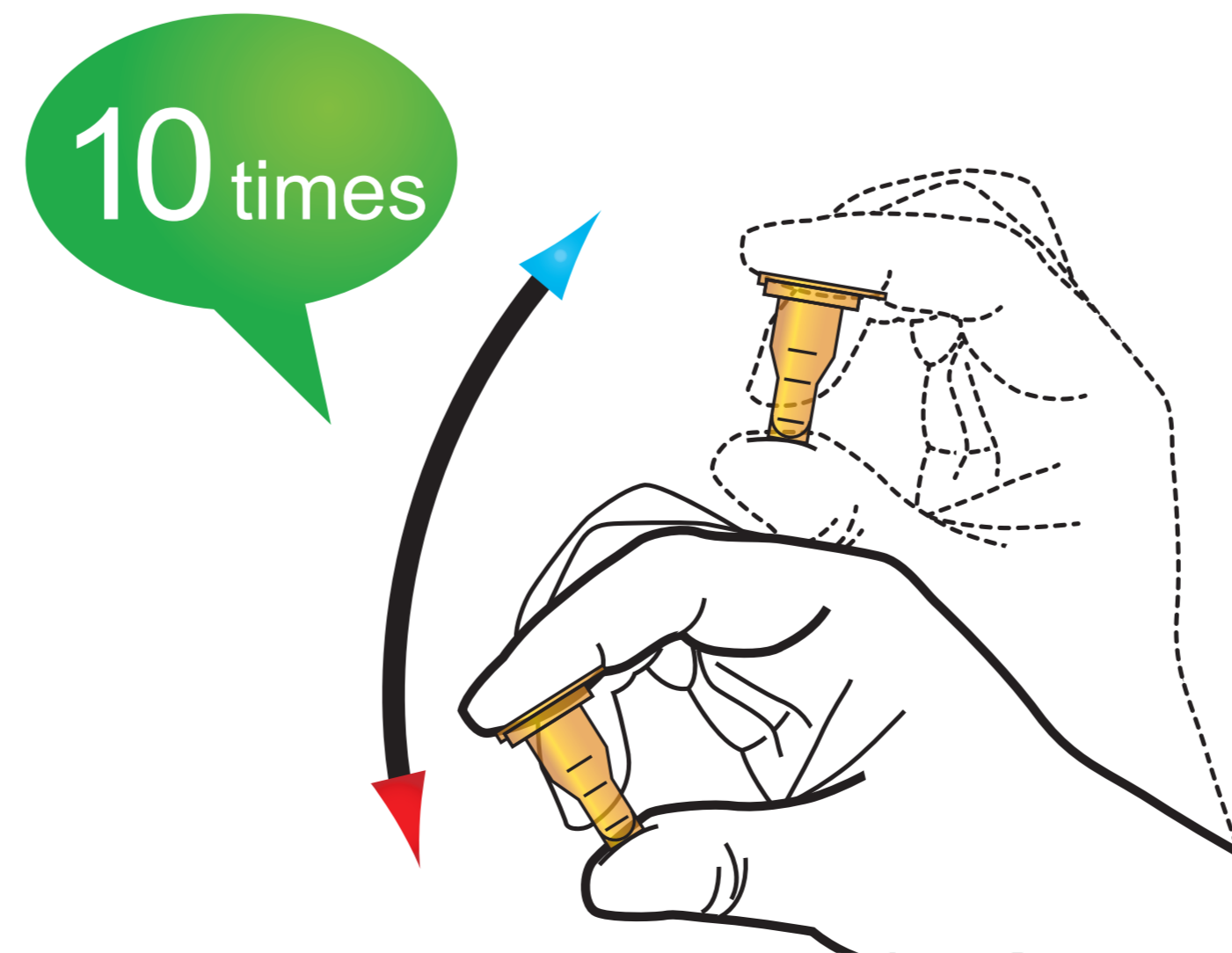
**3** Draw 5  $\mu$ L (Serum / Plasma / Control)



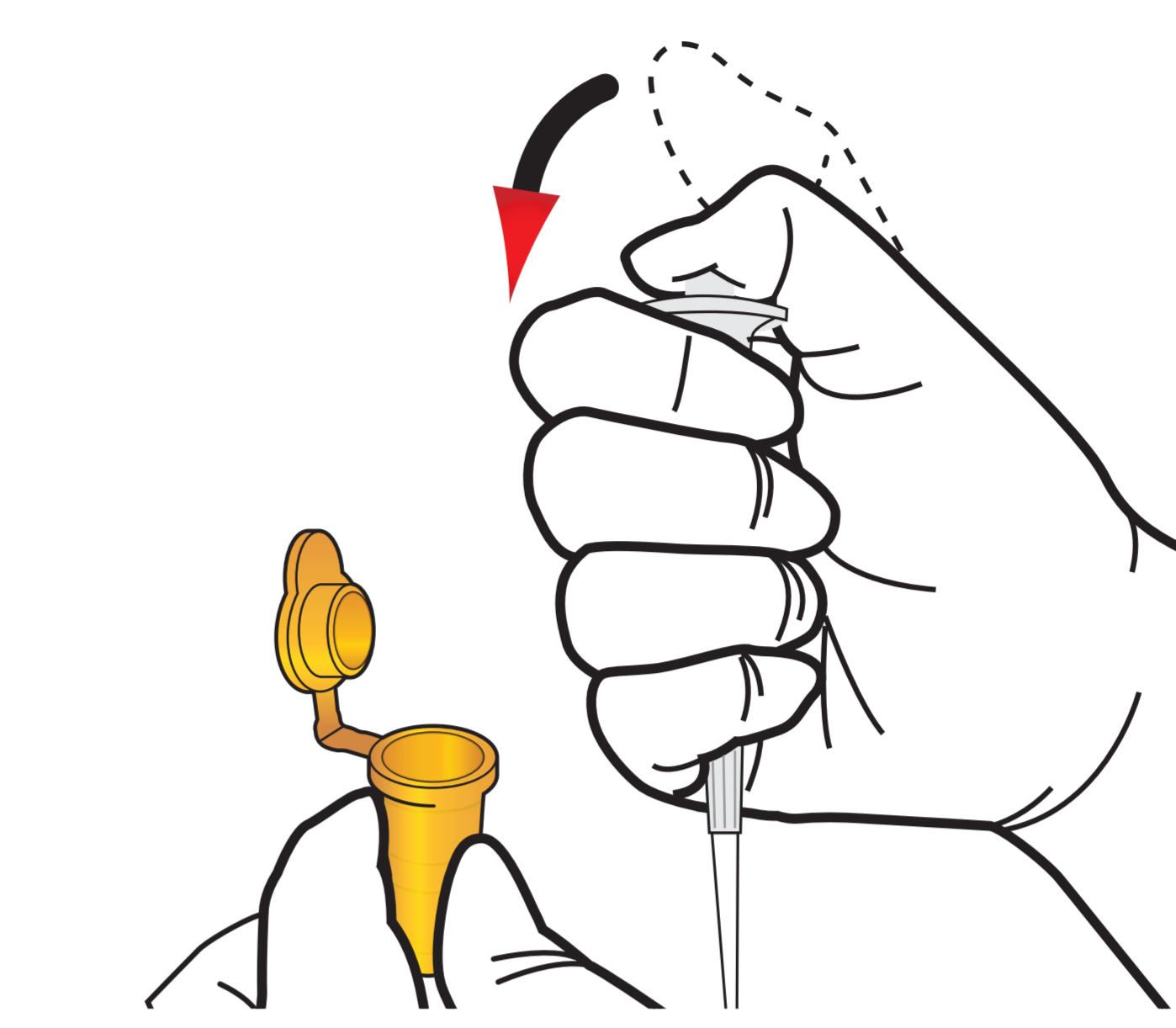
**4** Add it into detection buffer tube



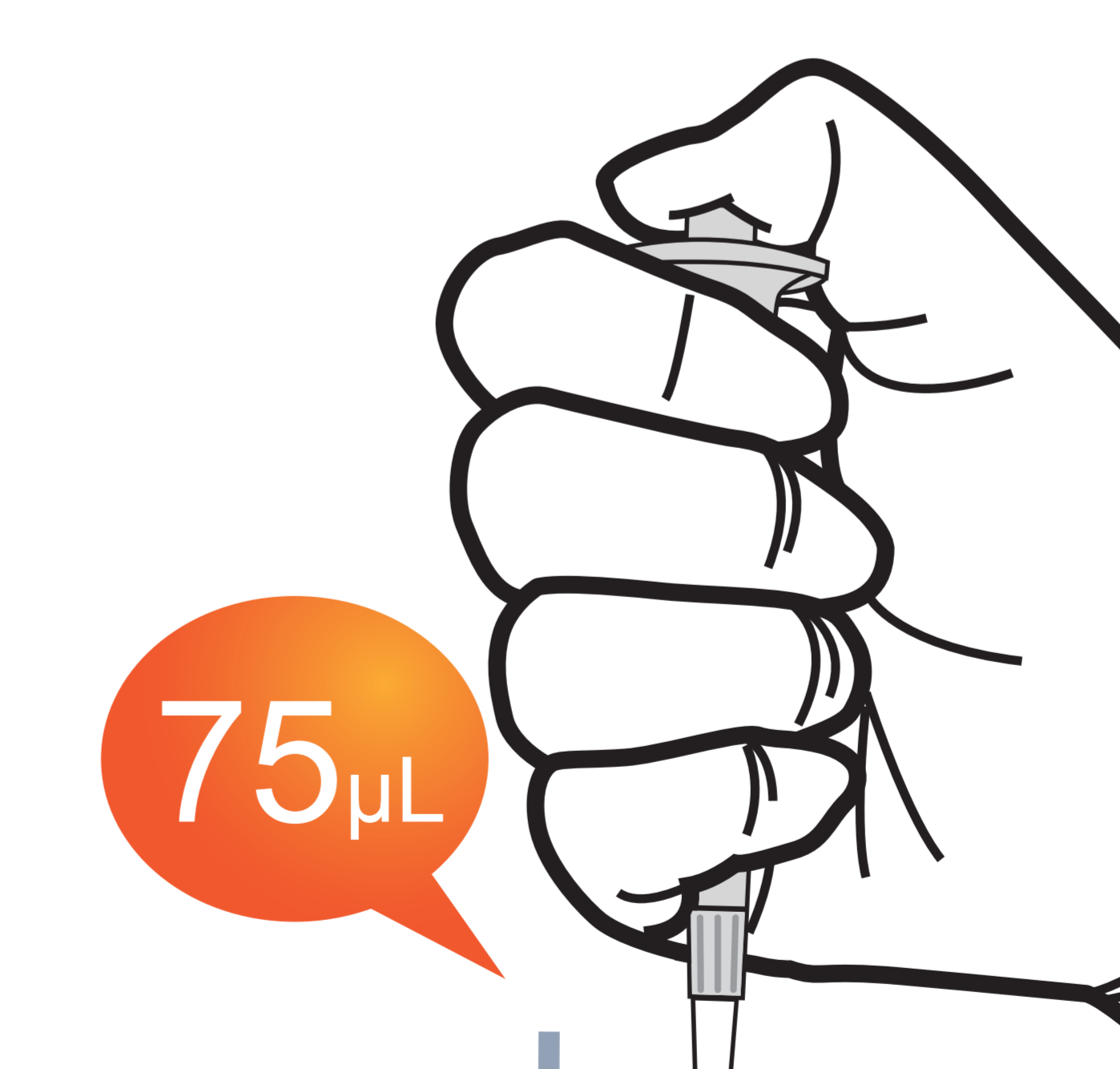
**5** Shake the detection buffer tube



**6** Draw the sample mixture



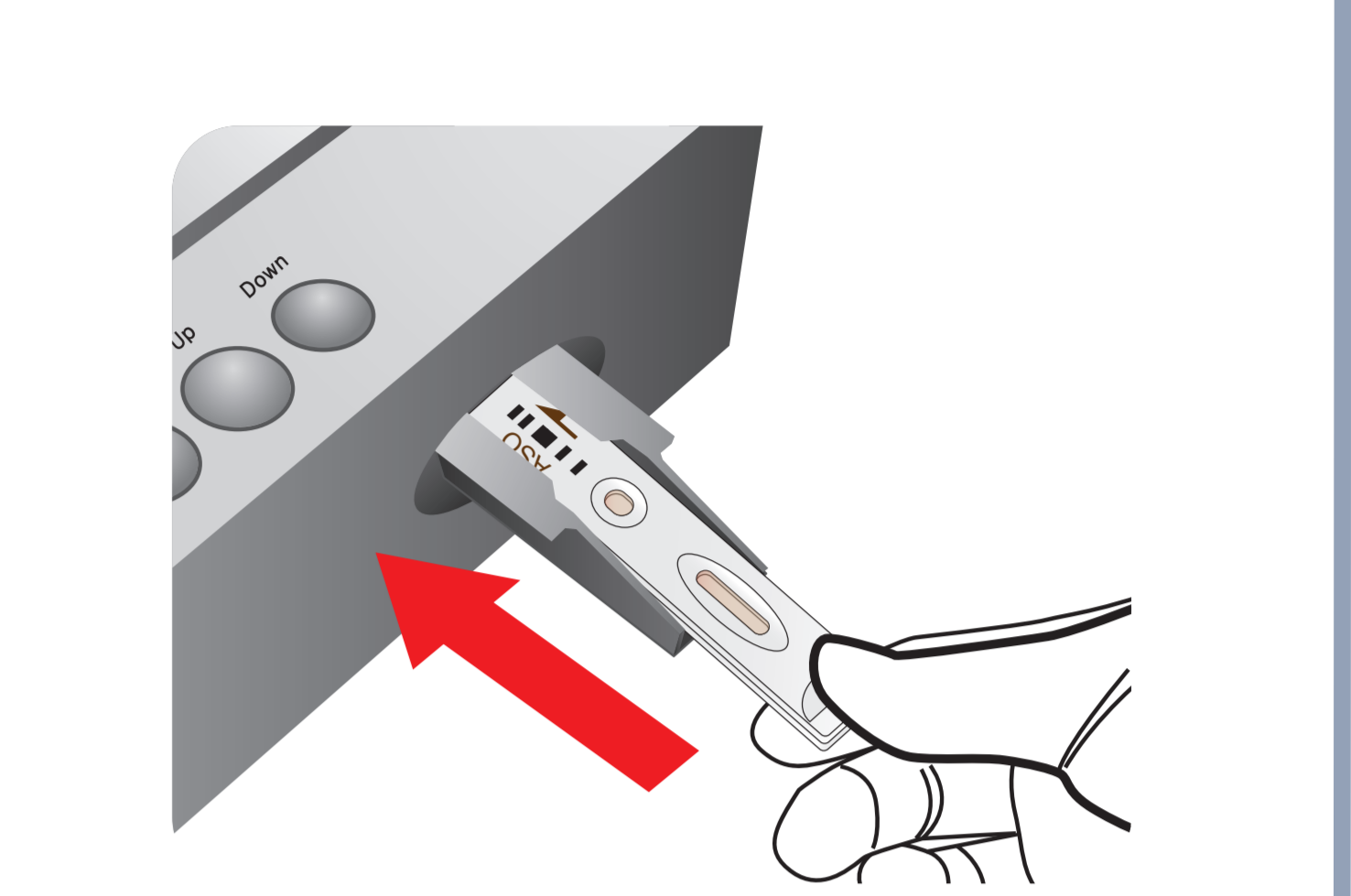
**7** Load the sample Mixture



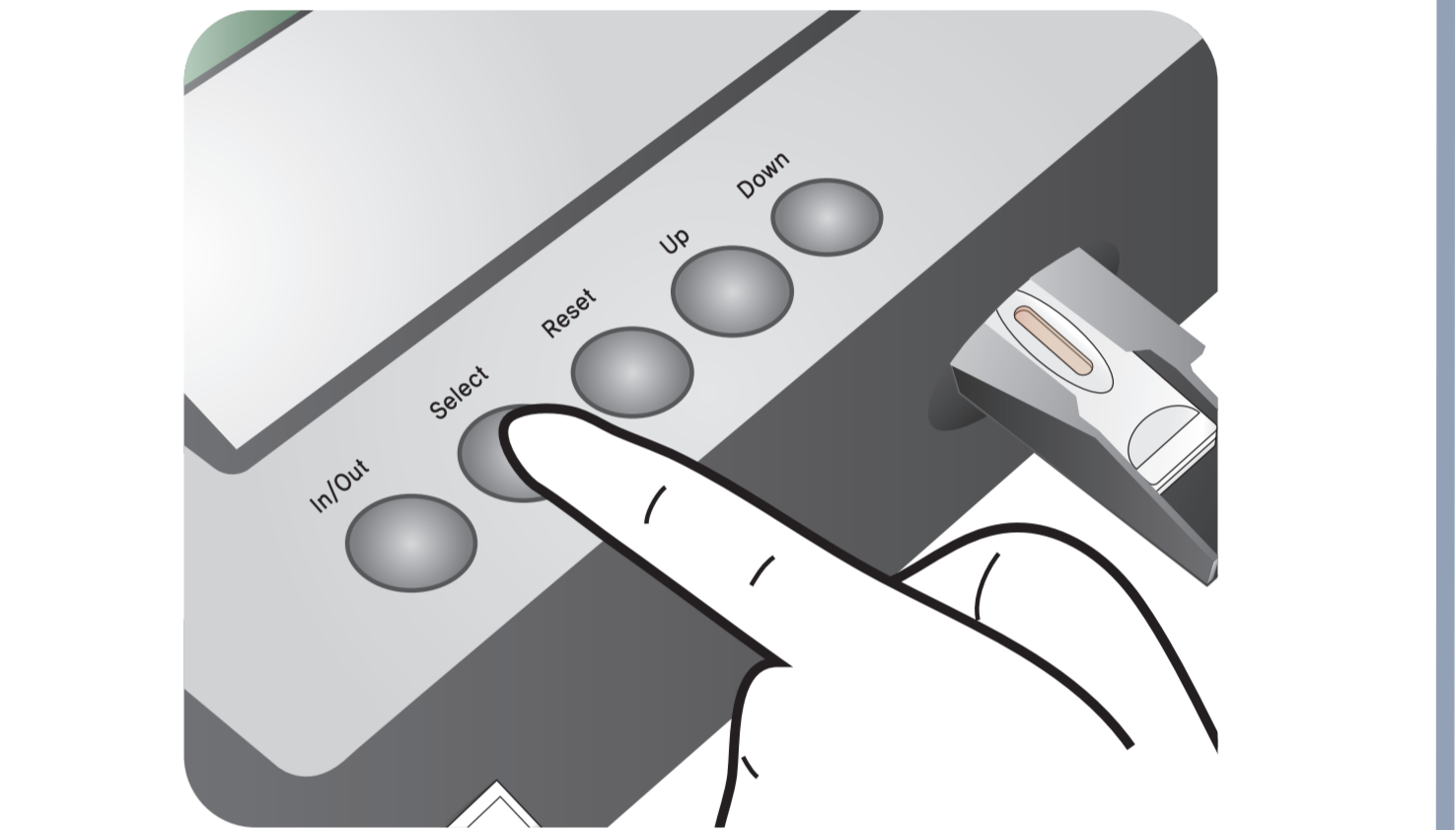
**8** Waiting 12 minutes



**9** Insert the test cartridge



**10** Press 'Select'



**11** Read the test result

