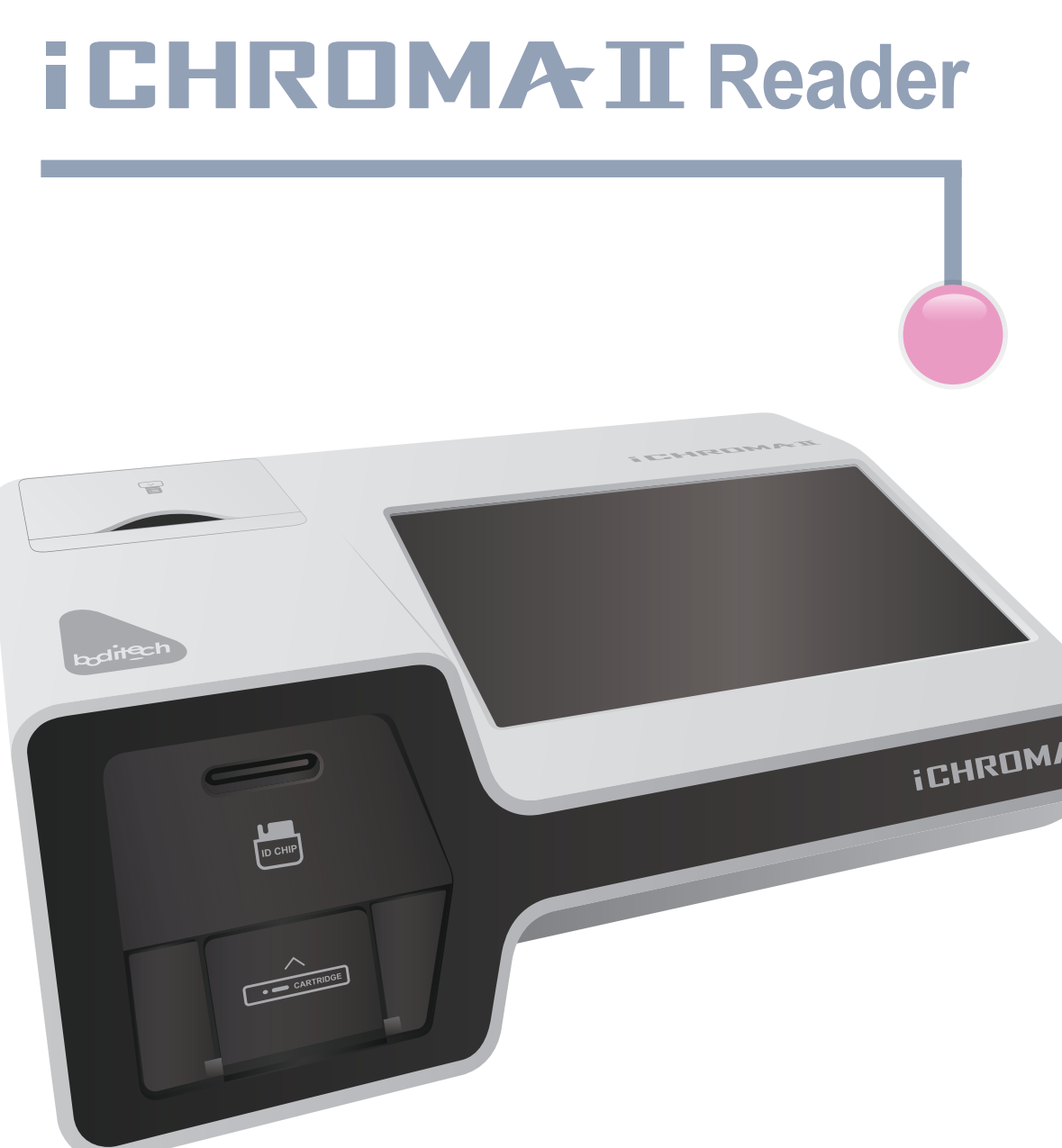
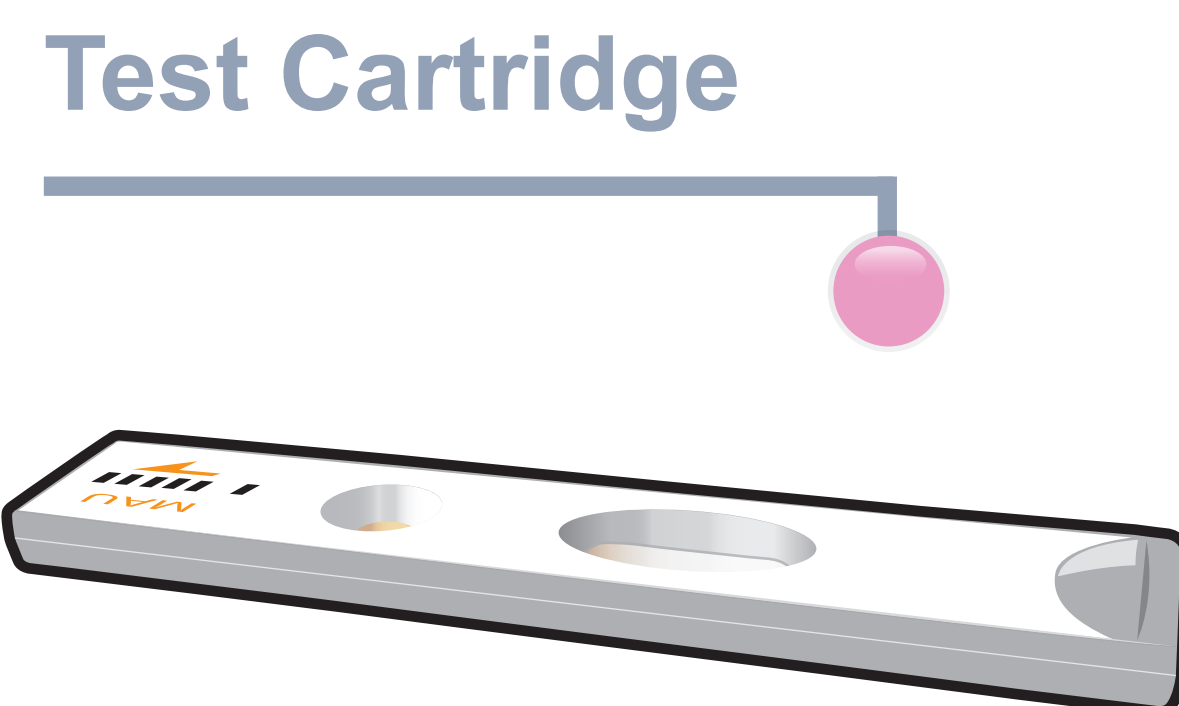
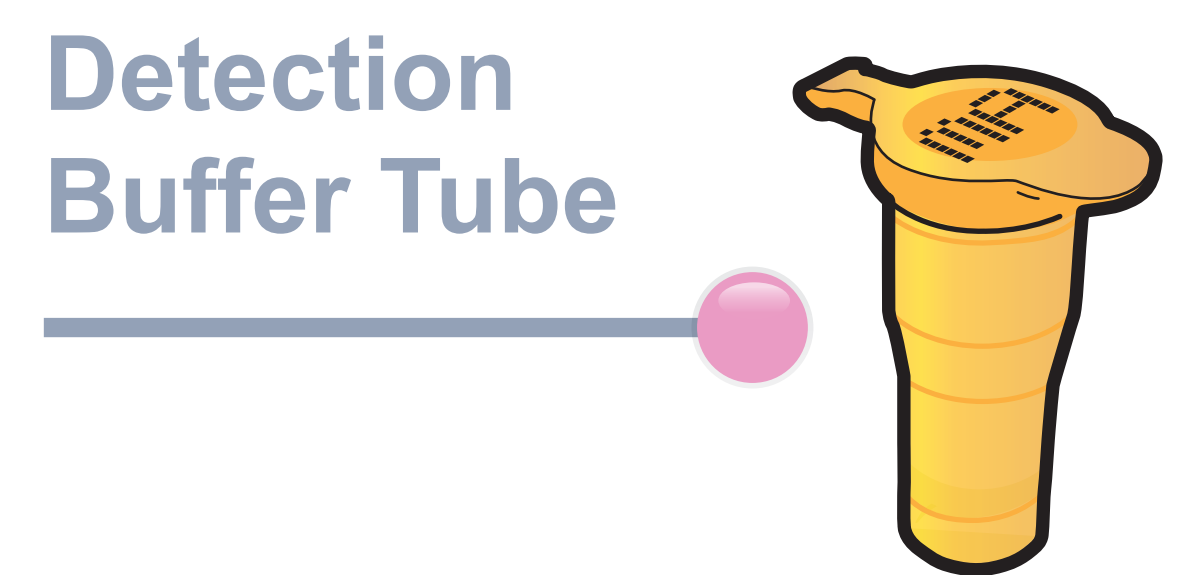
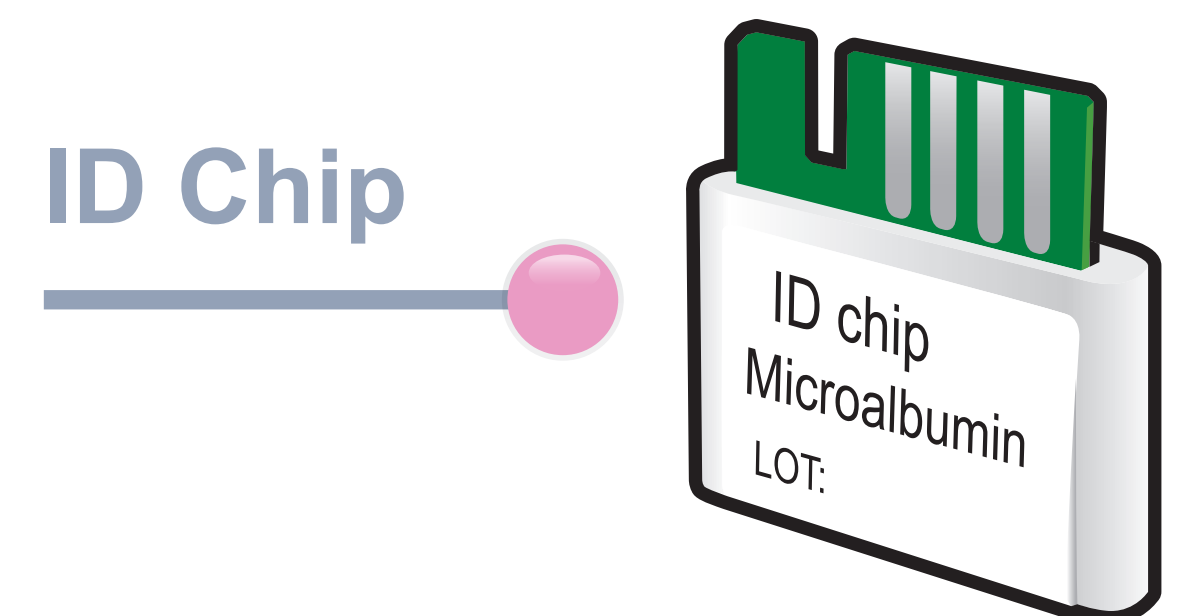


ichromaTM Microalbumin

Test Setup

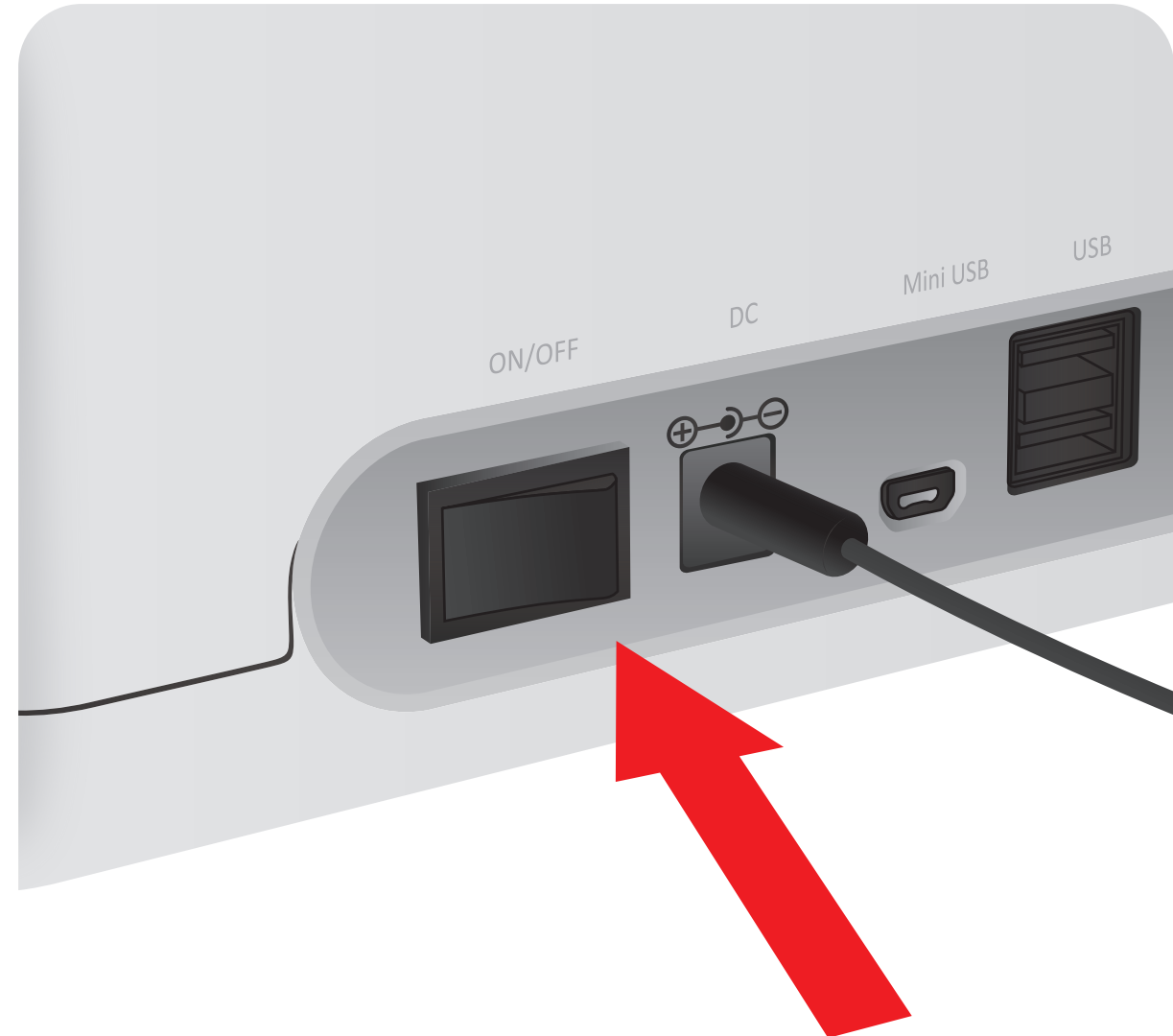
Test Components



Important

- Allow 'Detection Buffer Tube' to attain room temperature at least for 30 minutes before performing the test
- Make sure that lot number of the 'ID Chip' is exactly same as the lot number of 'Test Cartridge' and Detection Buffer Tube

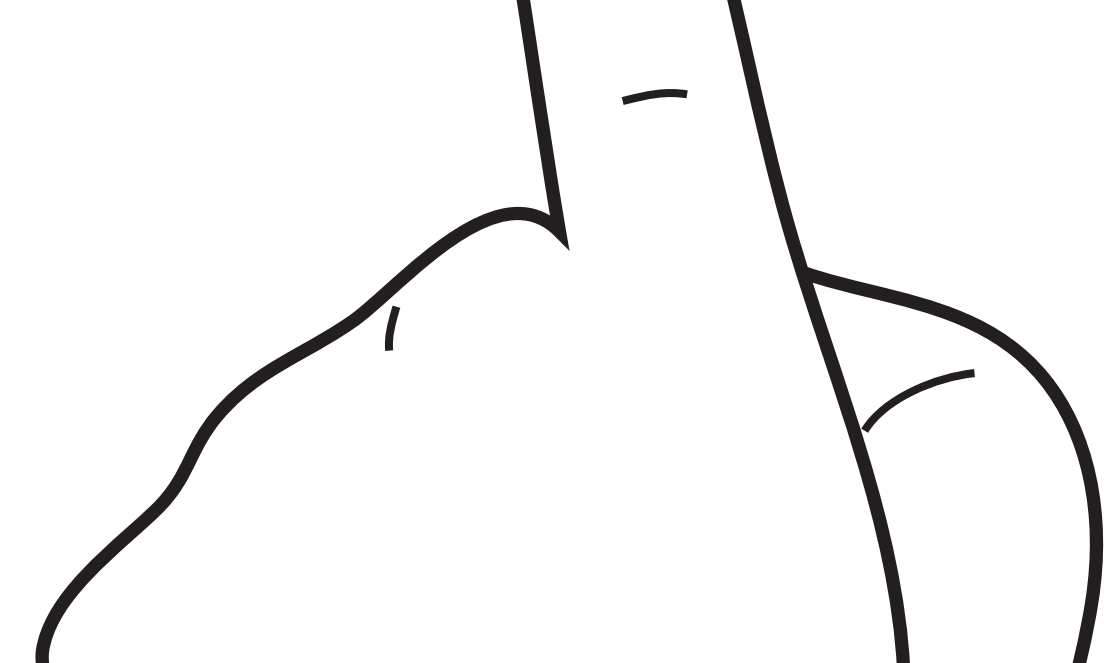
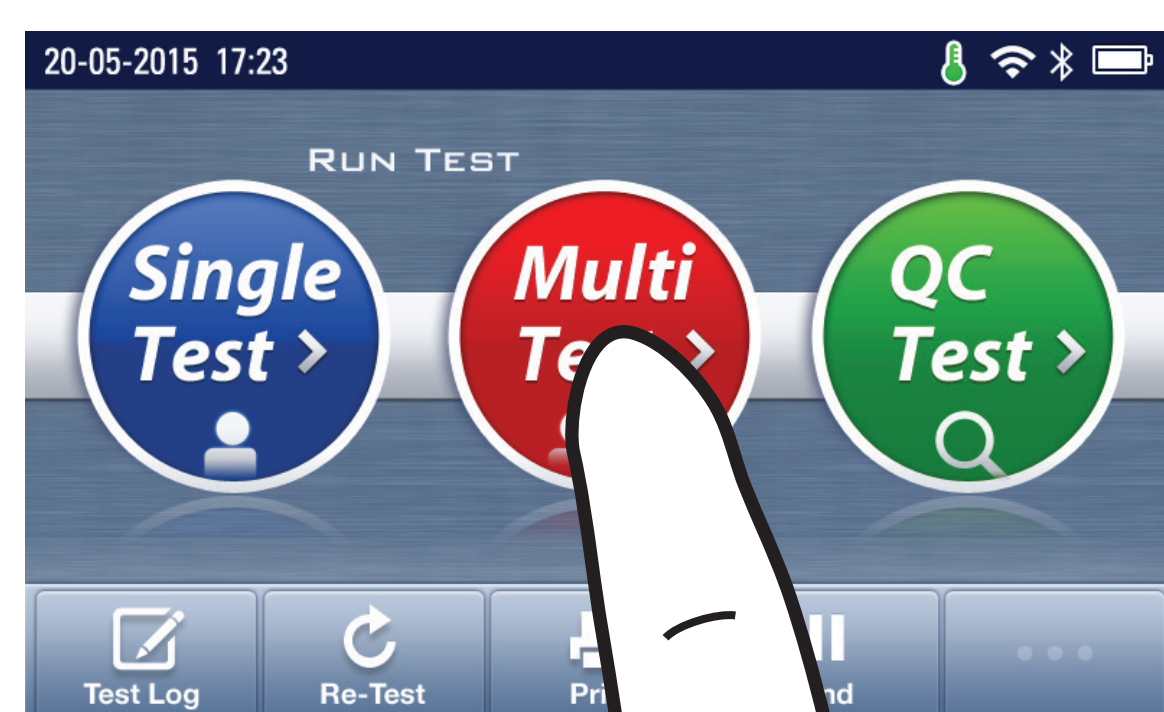
1 Turn the power switch 'On'



2 Insert ID Chip



3 Press 'Multi-test'

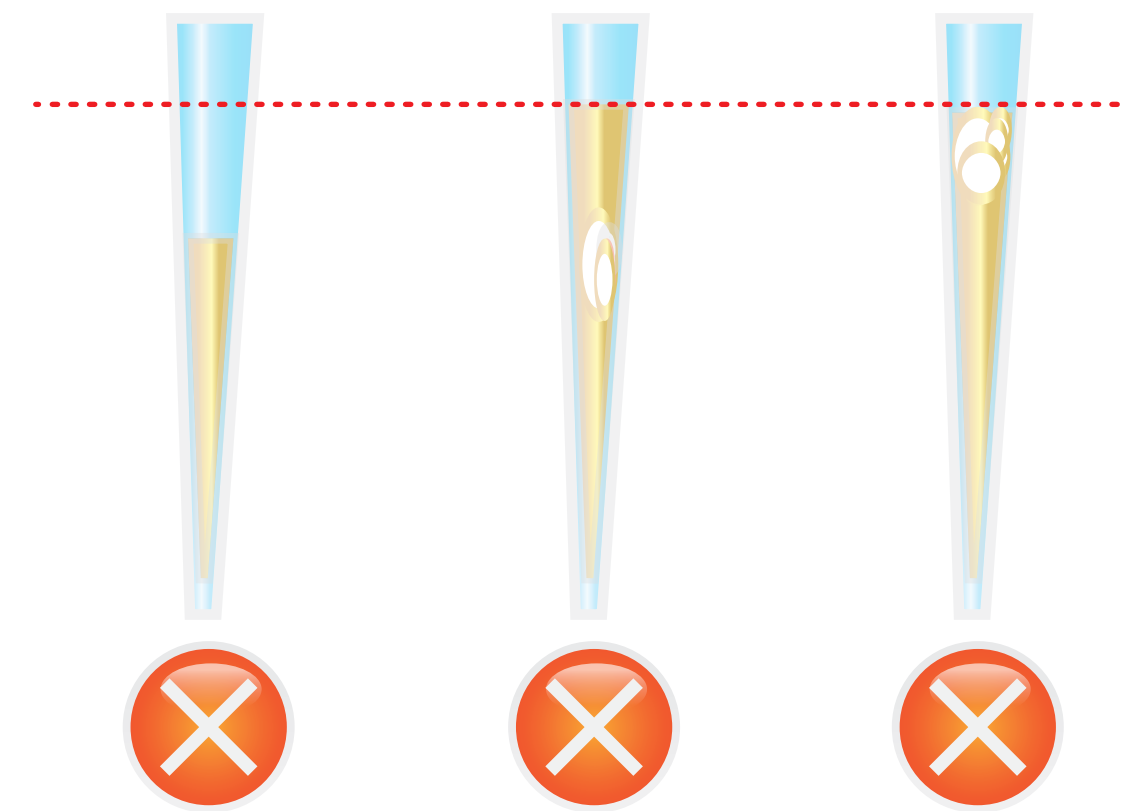


Test Procedure

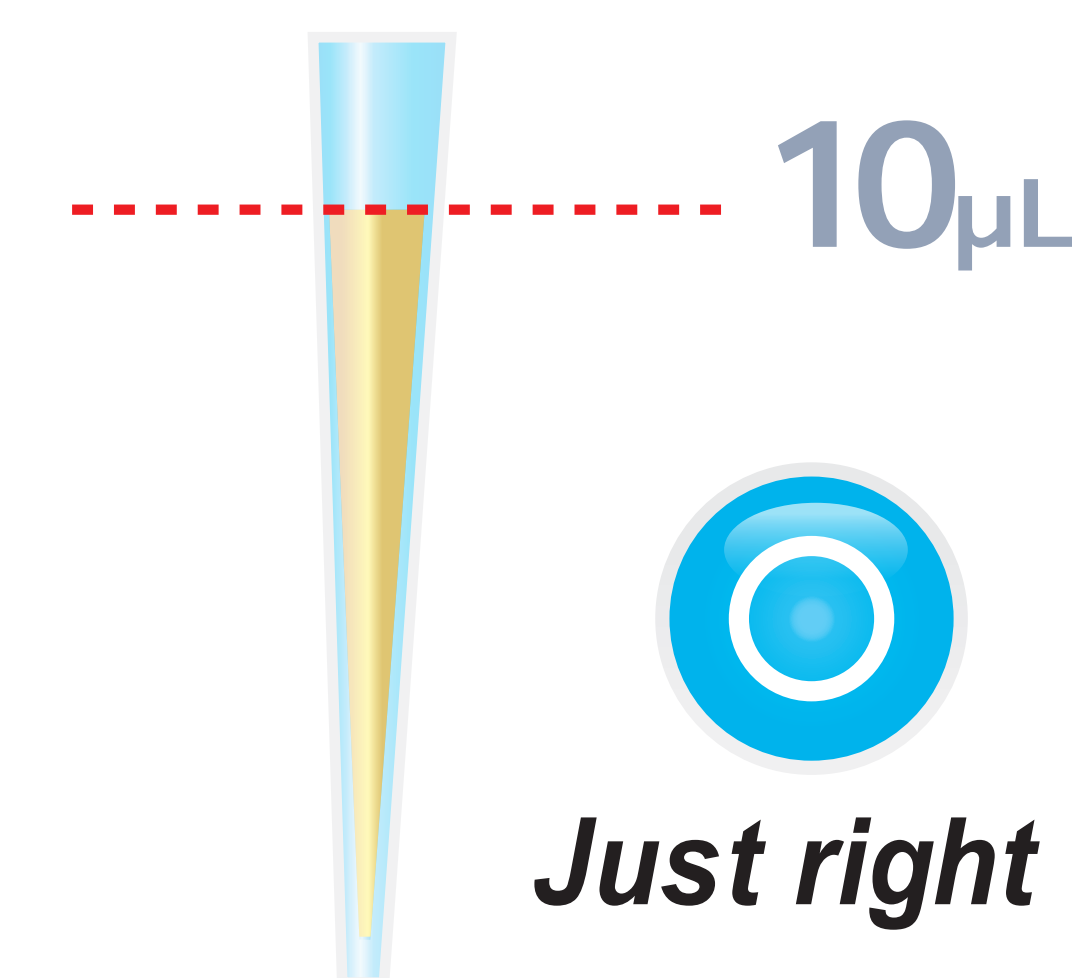
1 Draw the test sample



Take 10 µL of with a transfer pipette



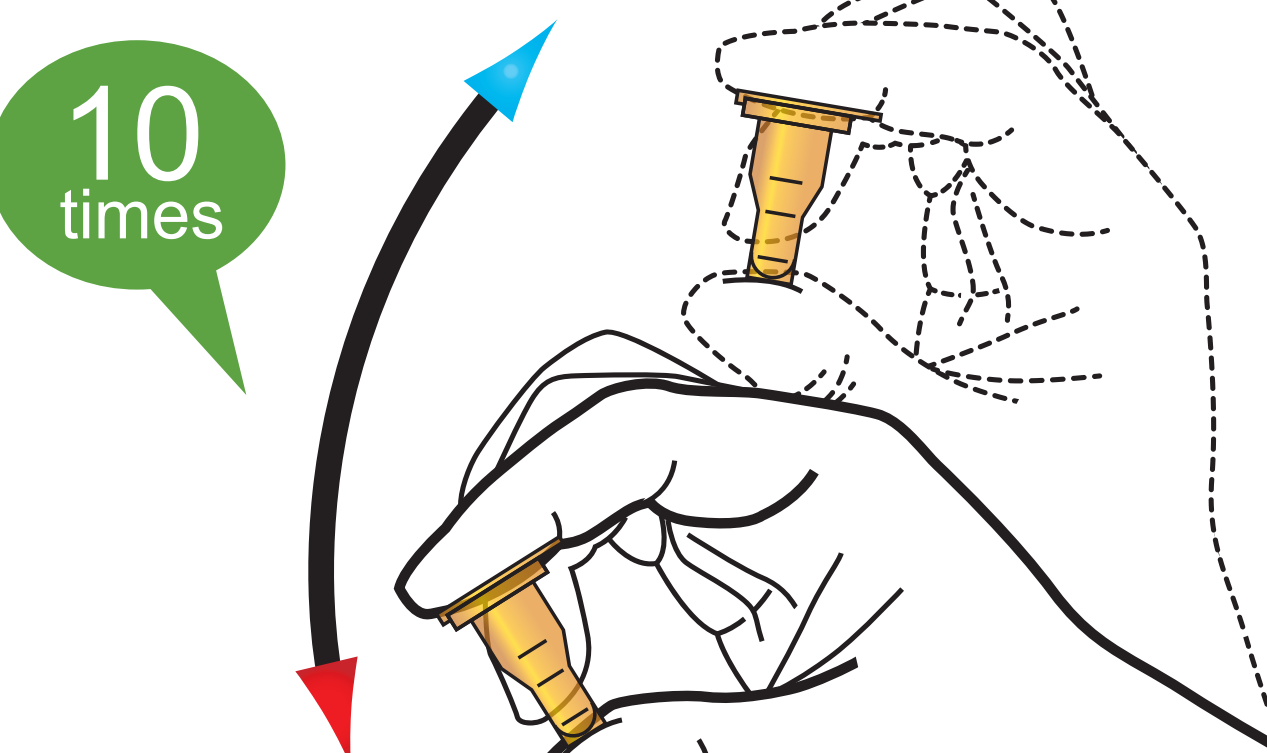
Too little or Bubble In the middle or near the top of the tip



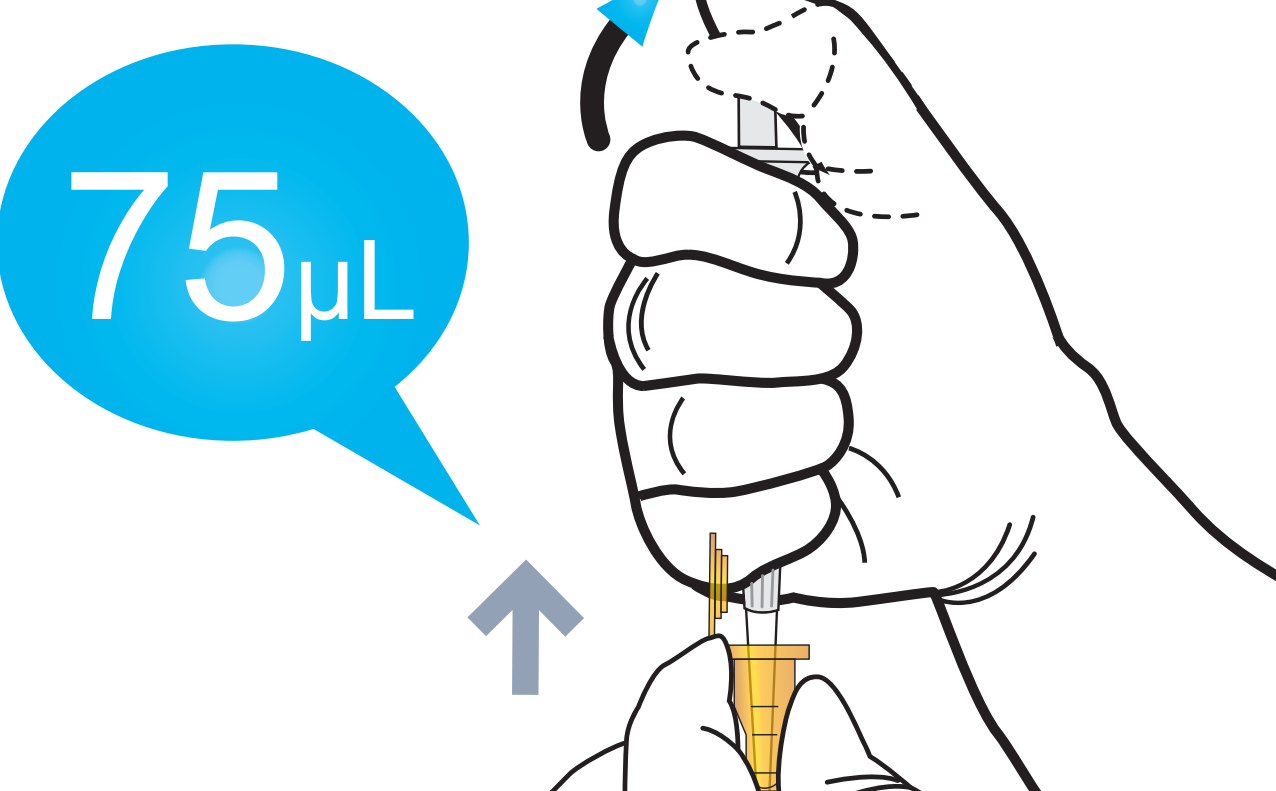
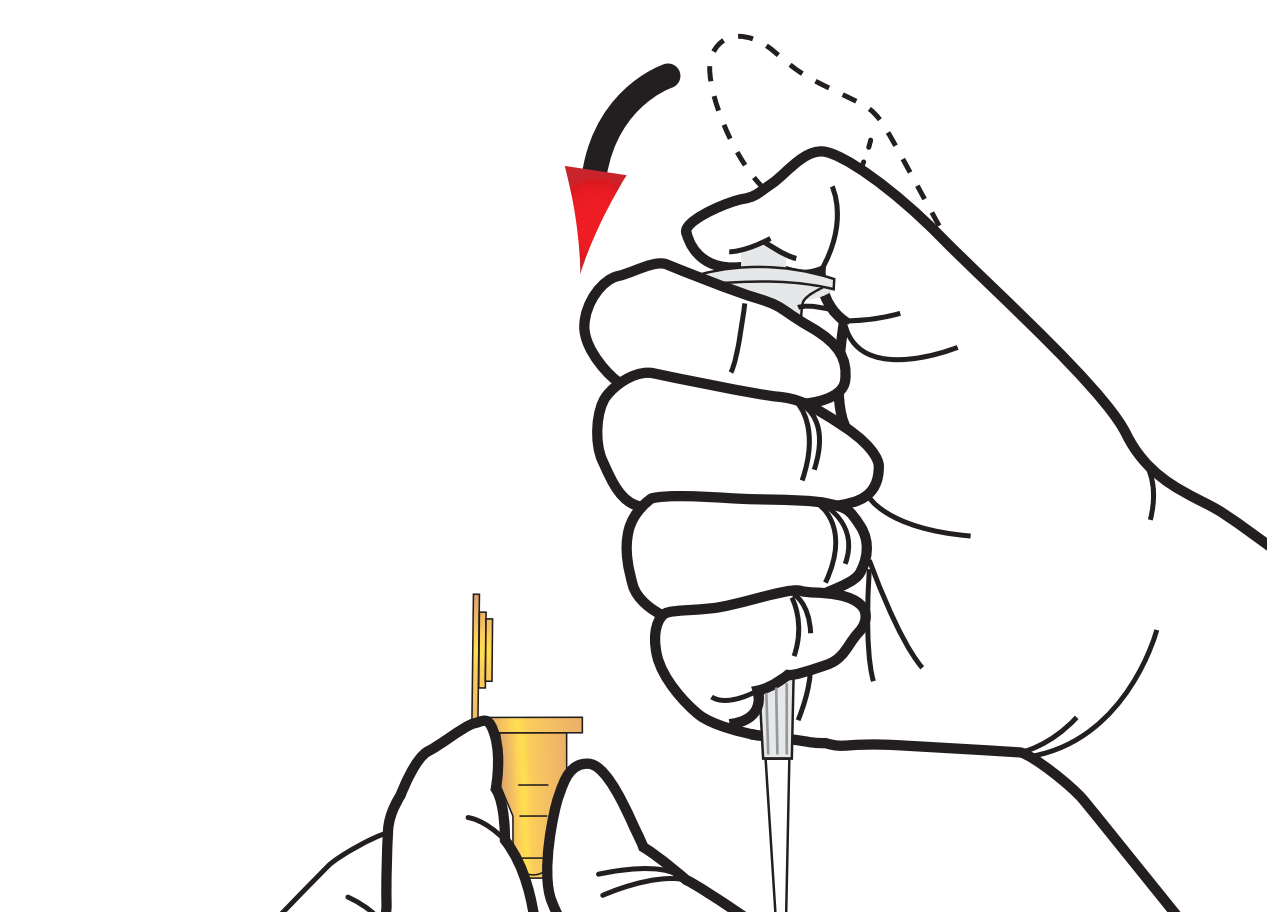
2 Add it into detection buffer tube



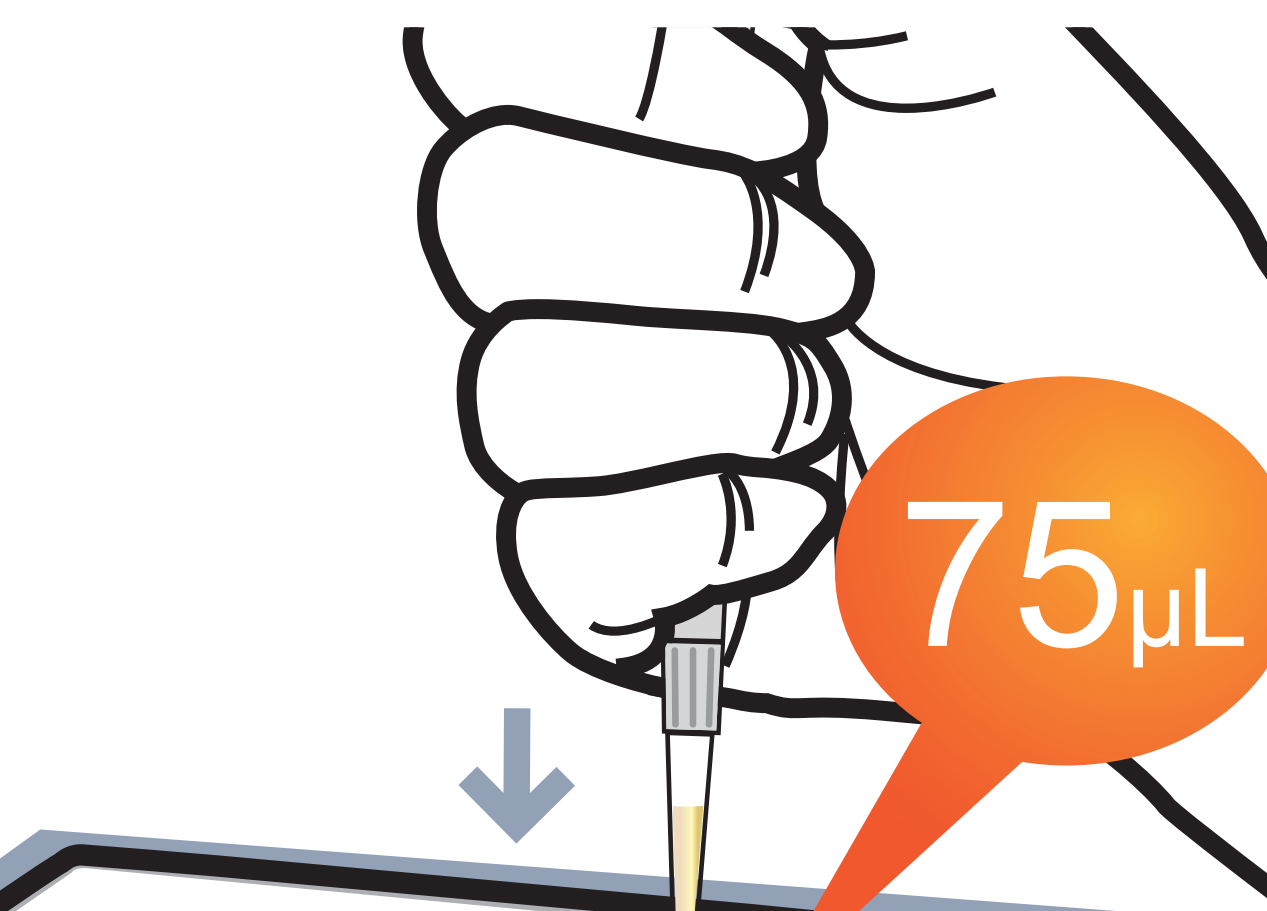
3 Shake the sample mixture tube



4 Draw the sample mixture



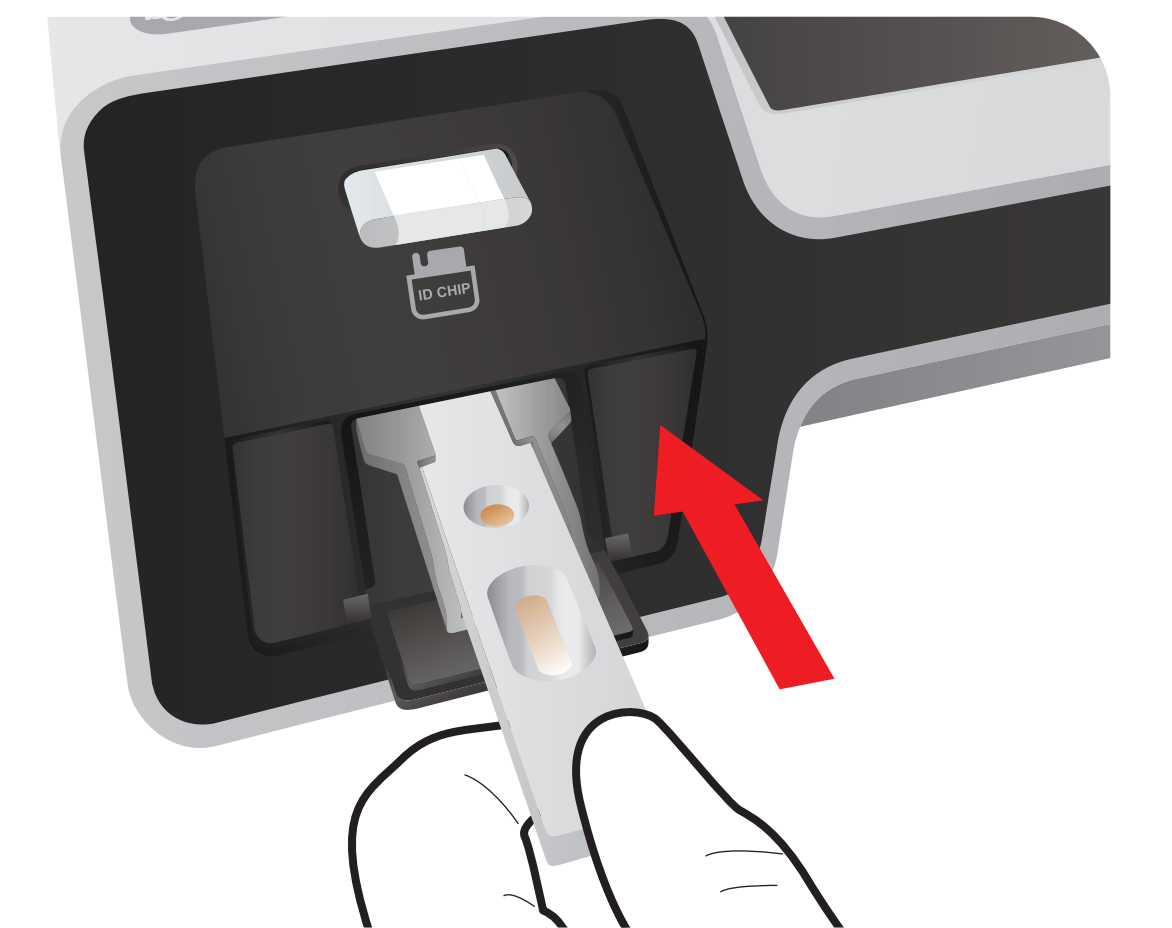
5 Load the sample mixture



6 Waiting 12 minutes



7 Insert the cartridge into ichromaTM II Reader



8 Press 'Select'



9 Read the test result

