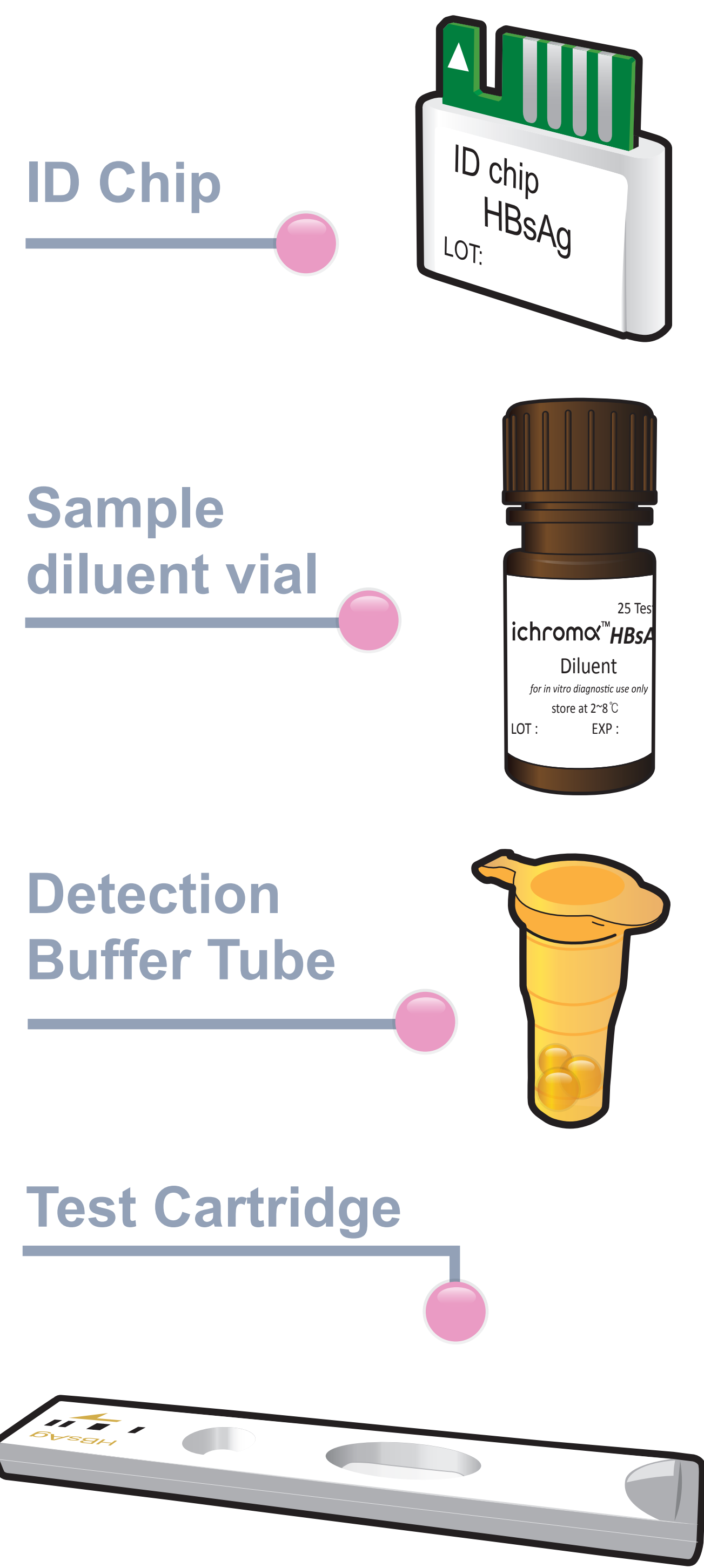


ichromaTM HBsAg

Test Setup

Test Components



iCHROMA II Reader



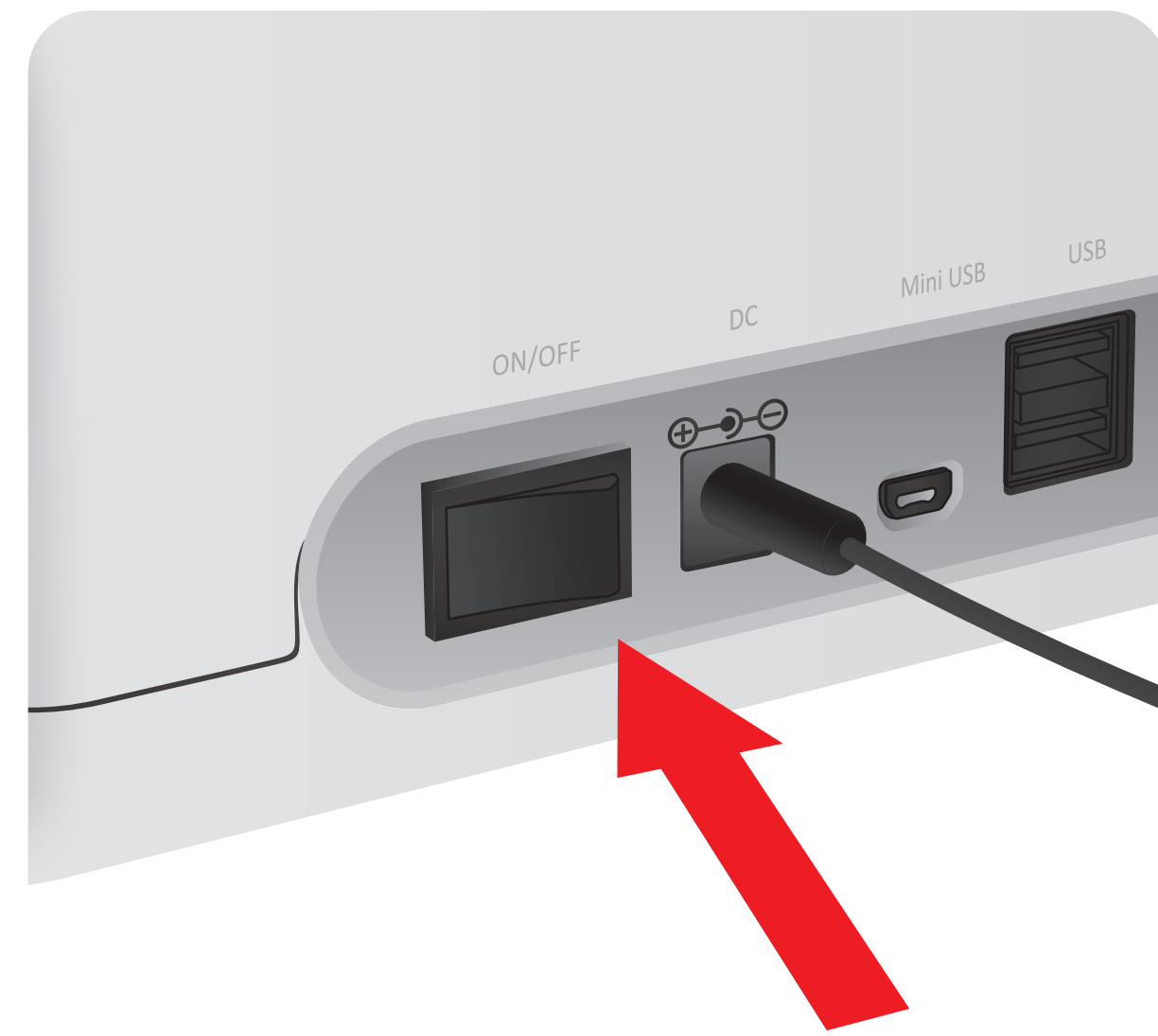
Important

Allow 'Detection Buffer Tube' to attain room temperature at least for 30 minutes before performing the test

Make sure that lot number of the 'ID Chip' is exactly same as the lot number of 'Test Cartridge' and Detection Buffer Tube'

Test Procedure

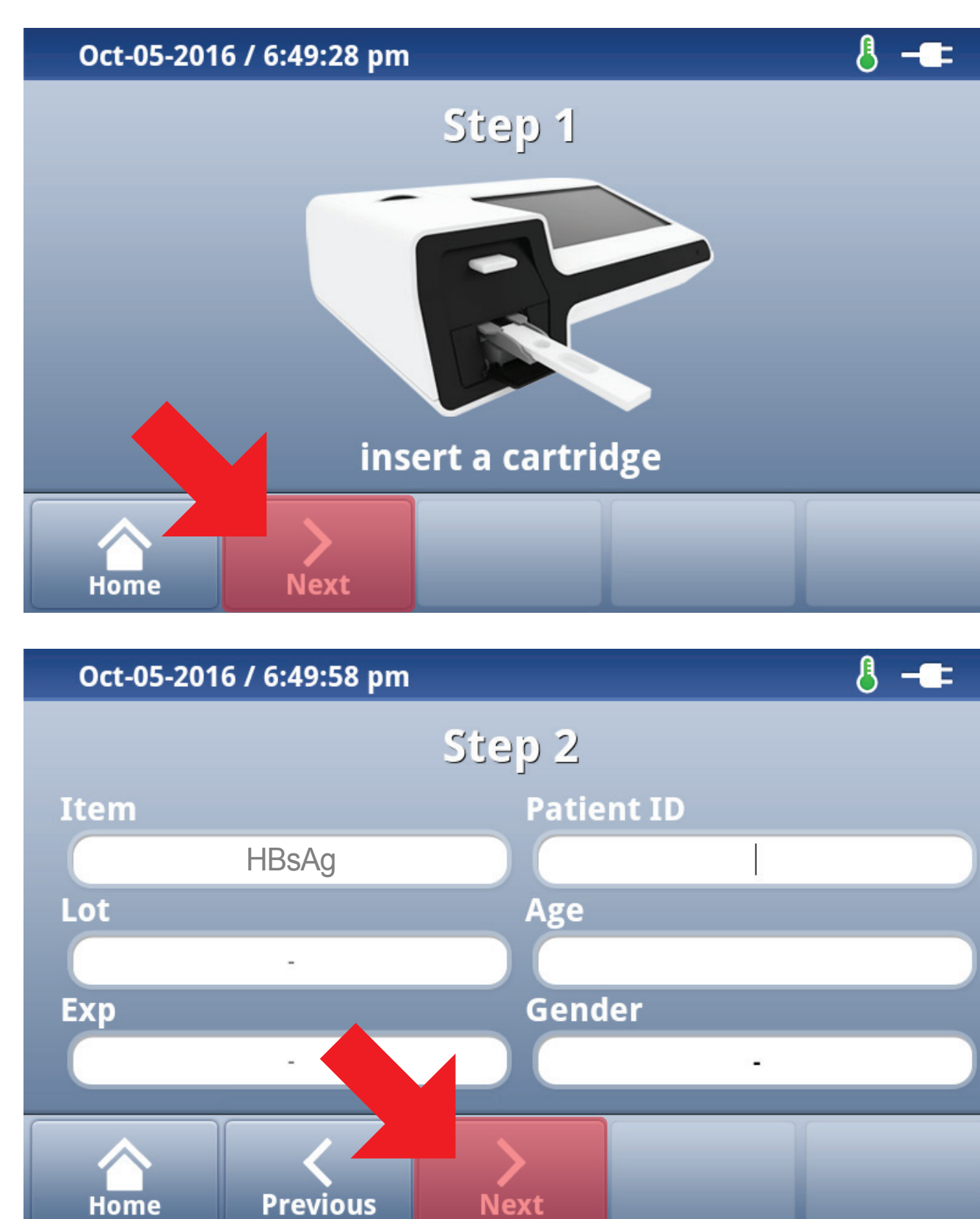
1 Turn the power switch 'On'



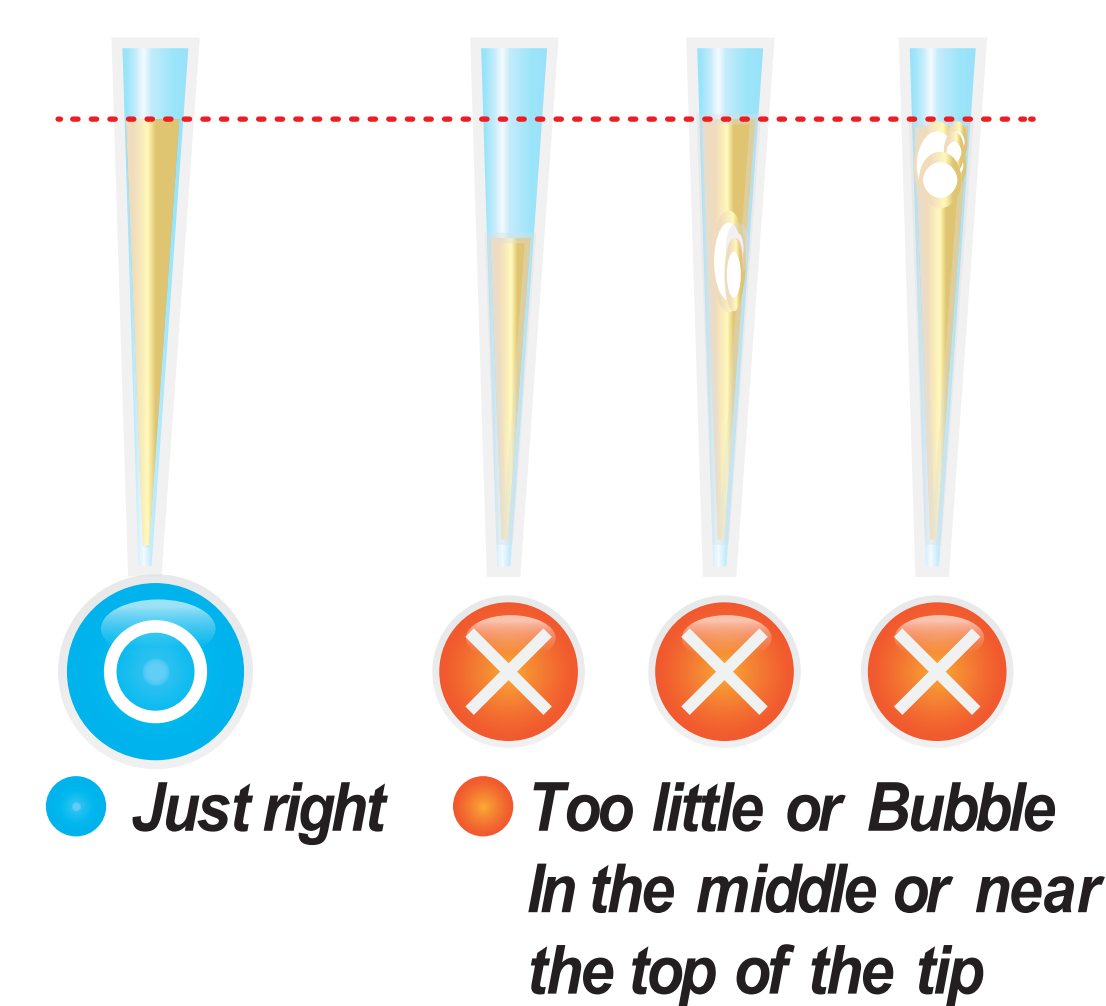
2 Insert ID Chip



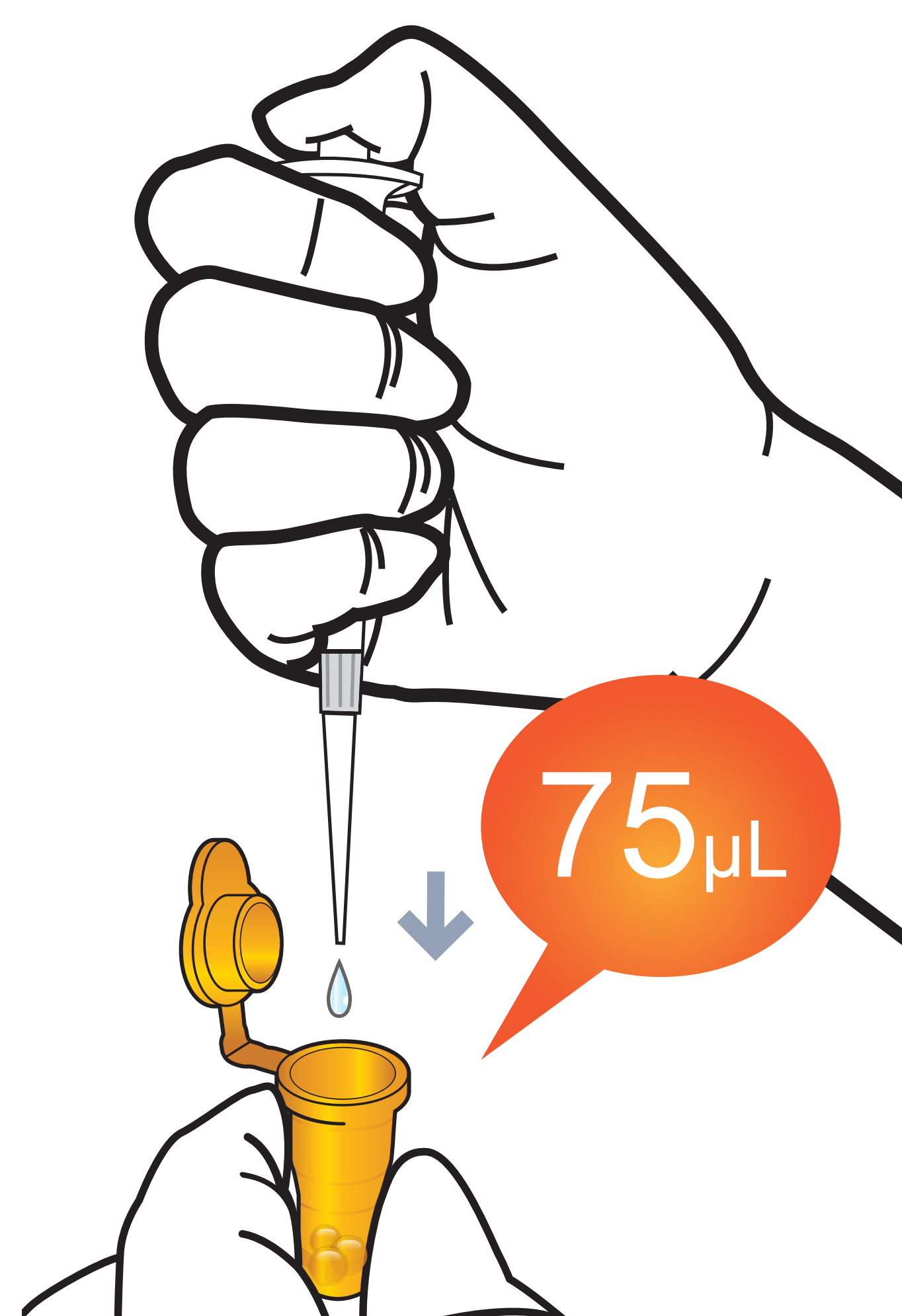
3 Press 'Select'



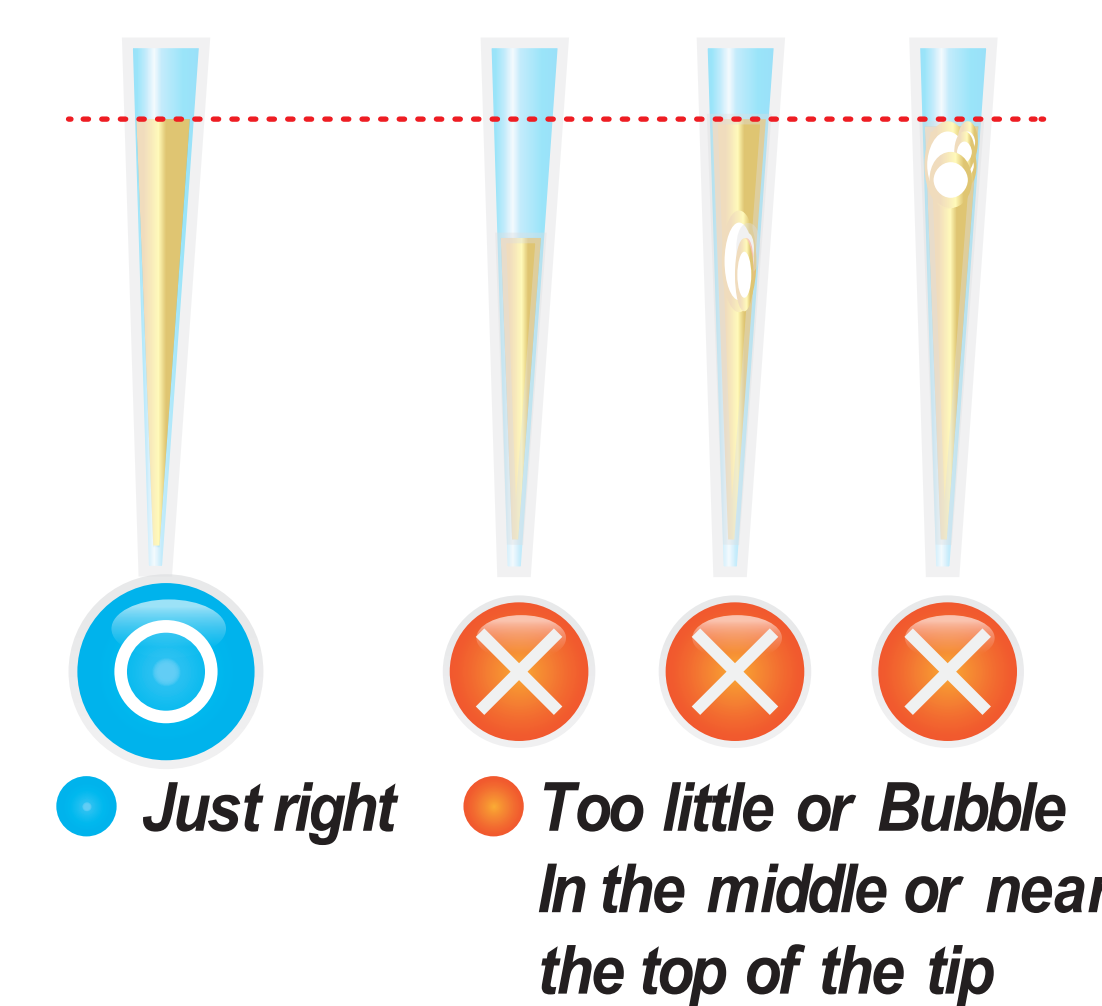
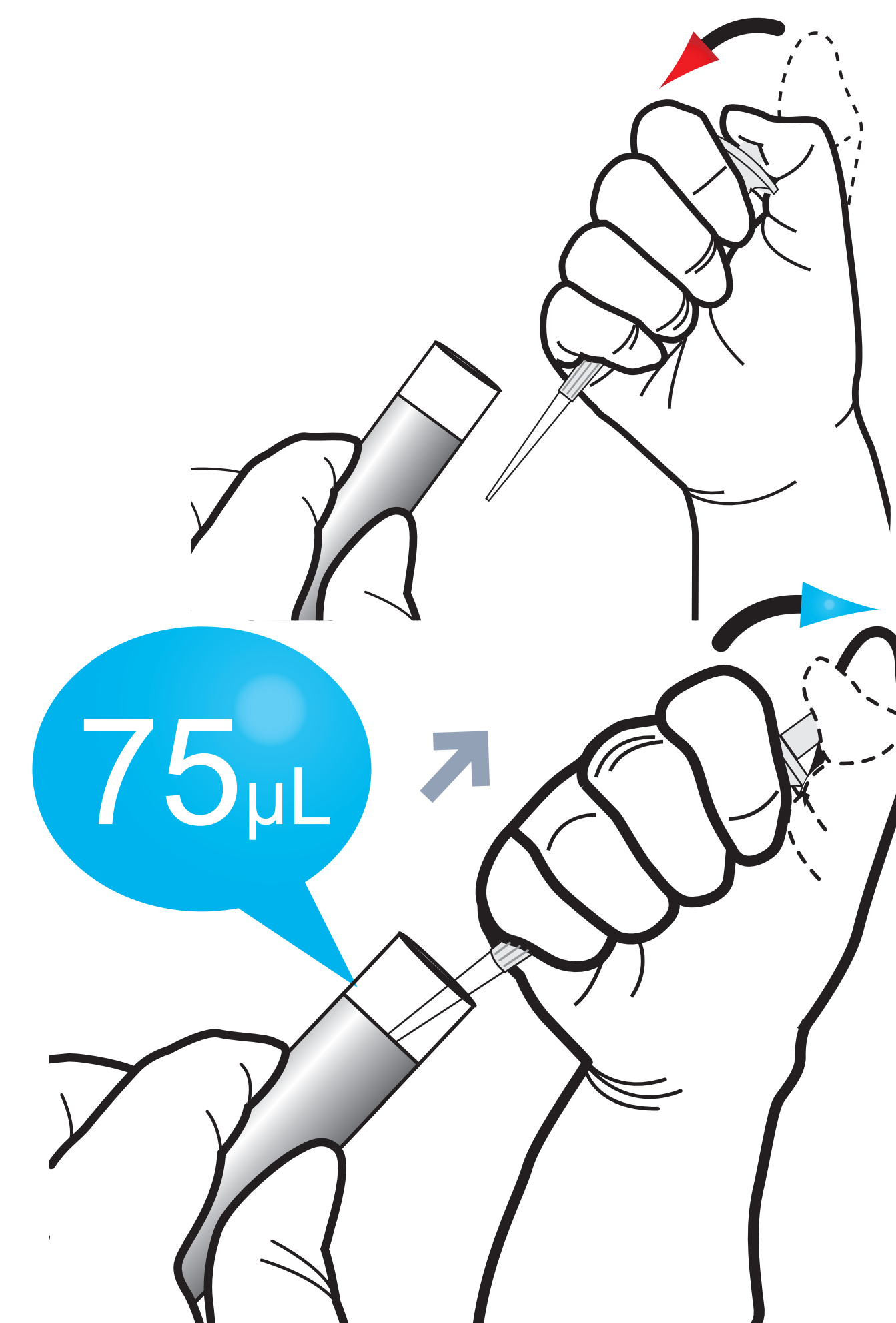
1 Draw 75 μ L of diluent buffer from diluent vial using a transfer pipette



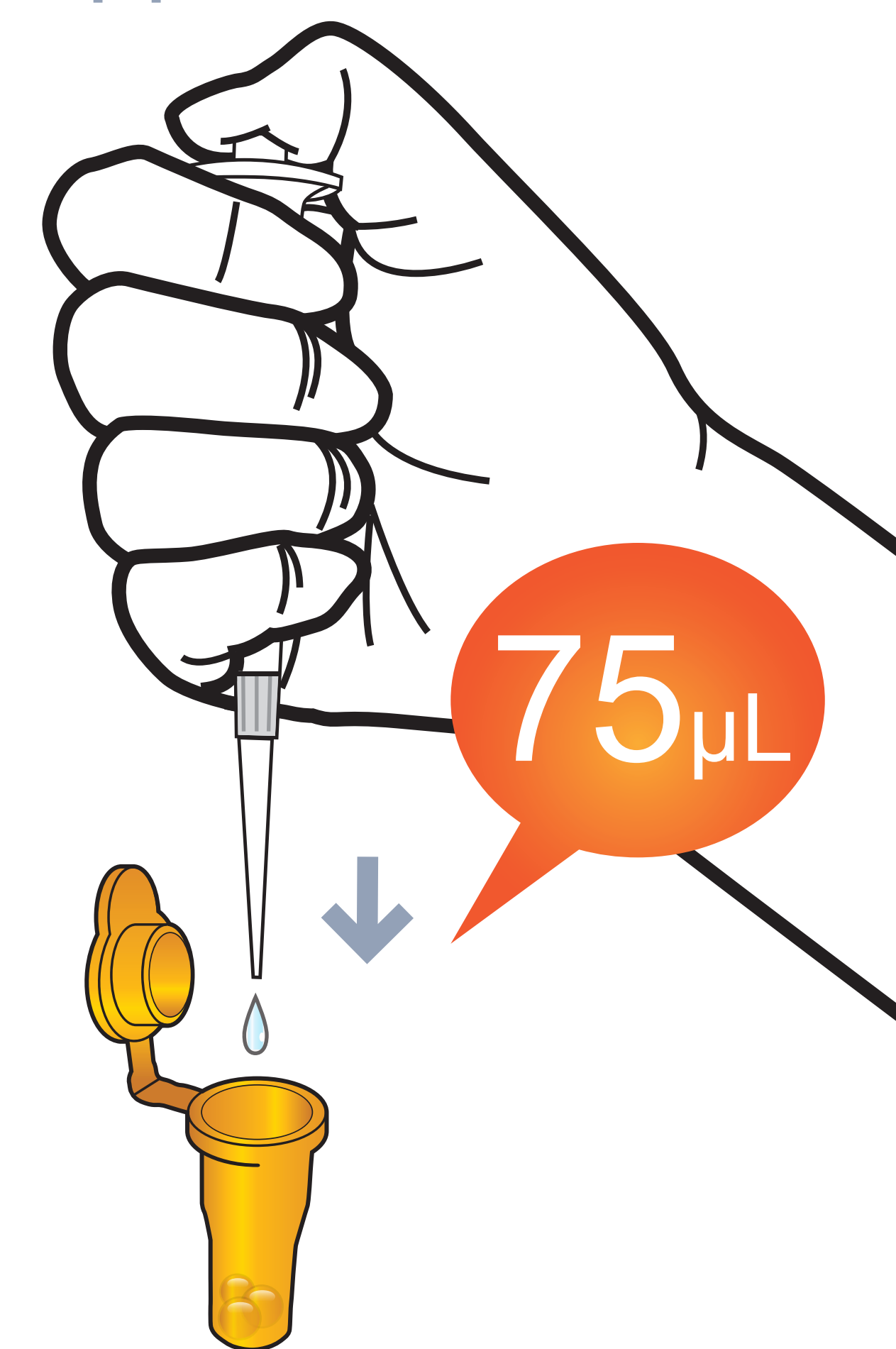
2 Add it into detection buffer tube



3 Take 75 μ L of sample (WB/S/P/Control) using a transfer pipette



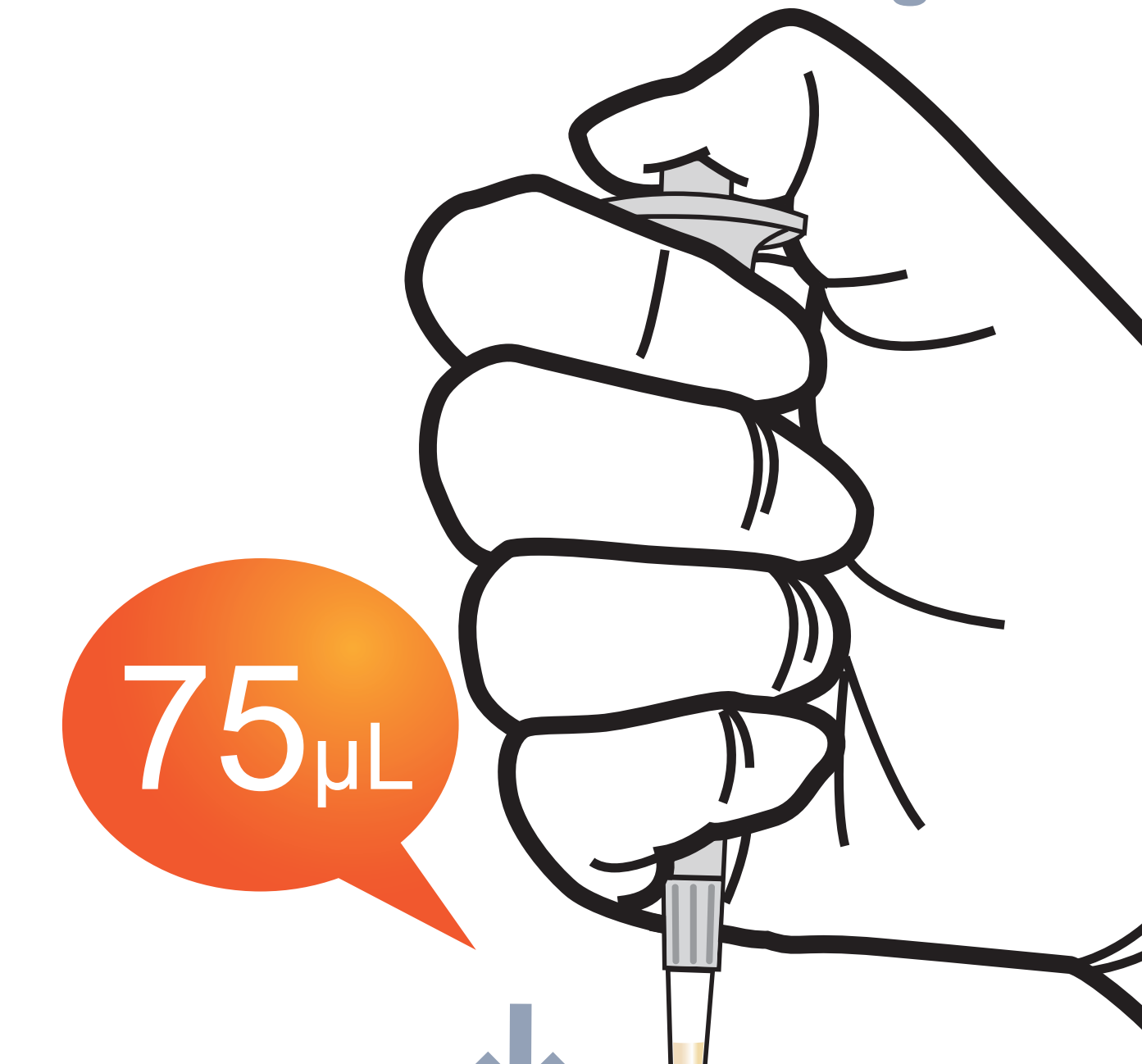
4 Transfer 75 μ L of samples into the detection buffer tube using a transfer pipette



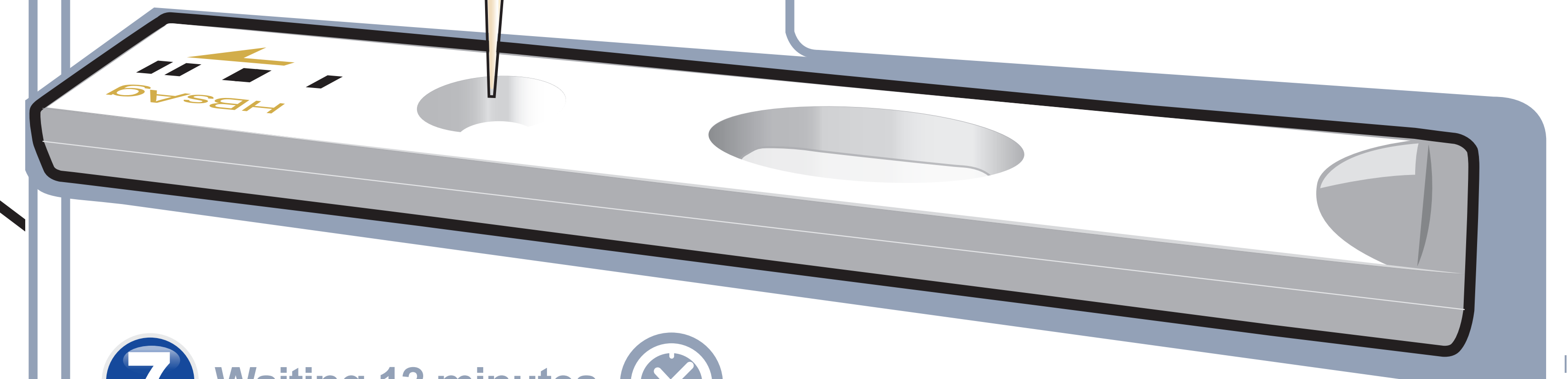
5 Mix well by pipetting 10-20 times.



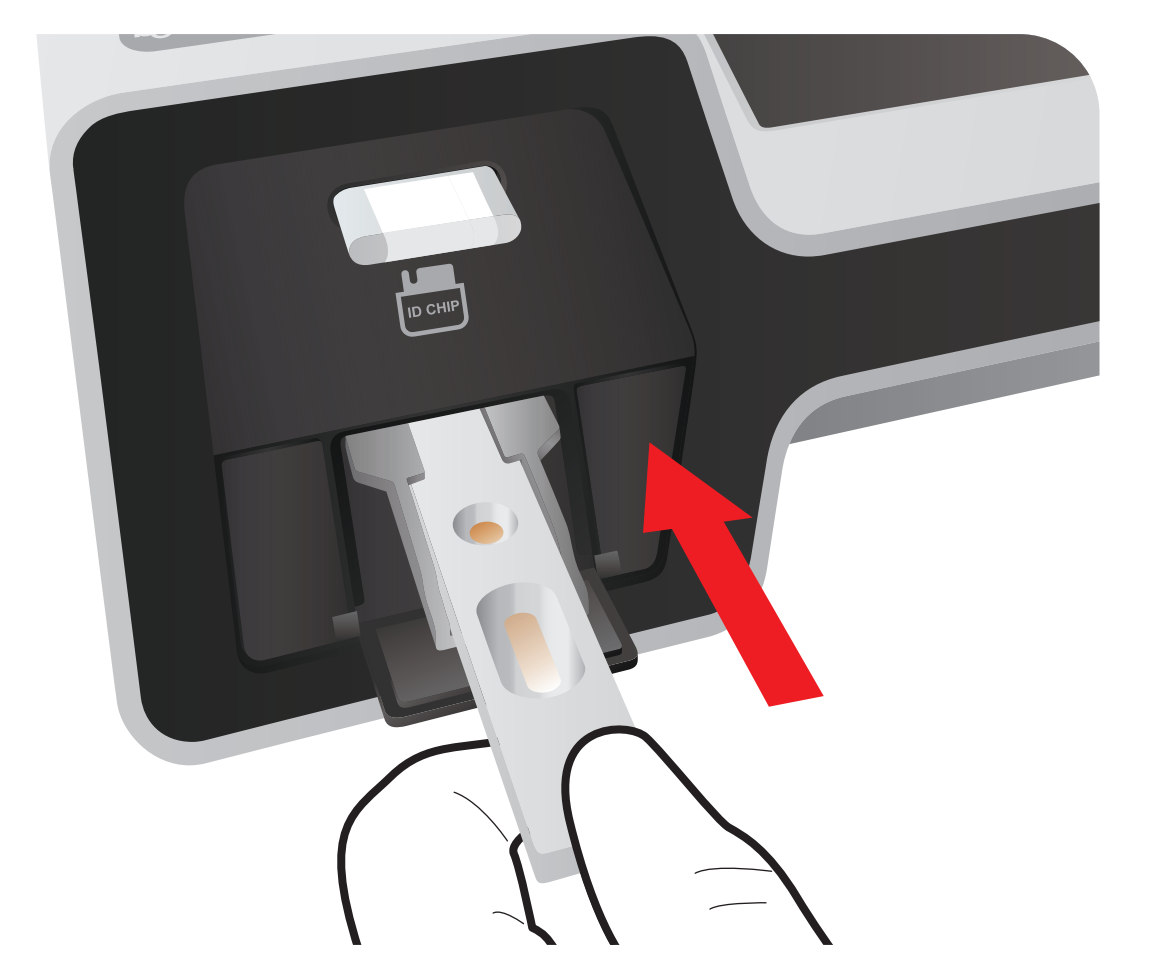
6 Load 75 μ L of a sample mixture to the sample well on the cartridge



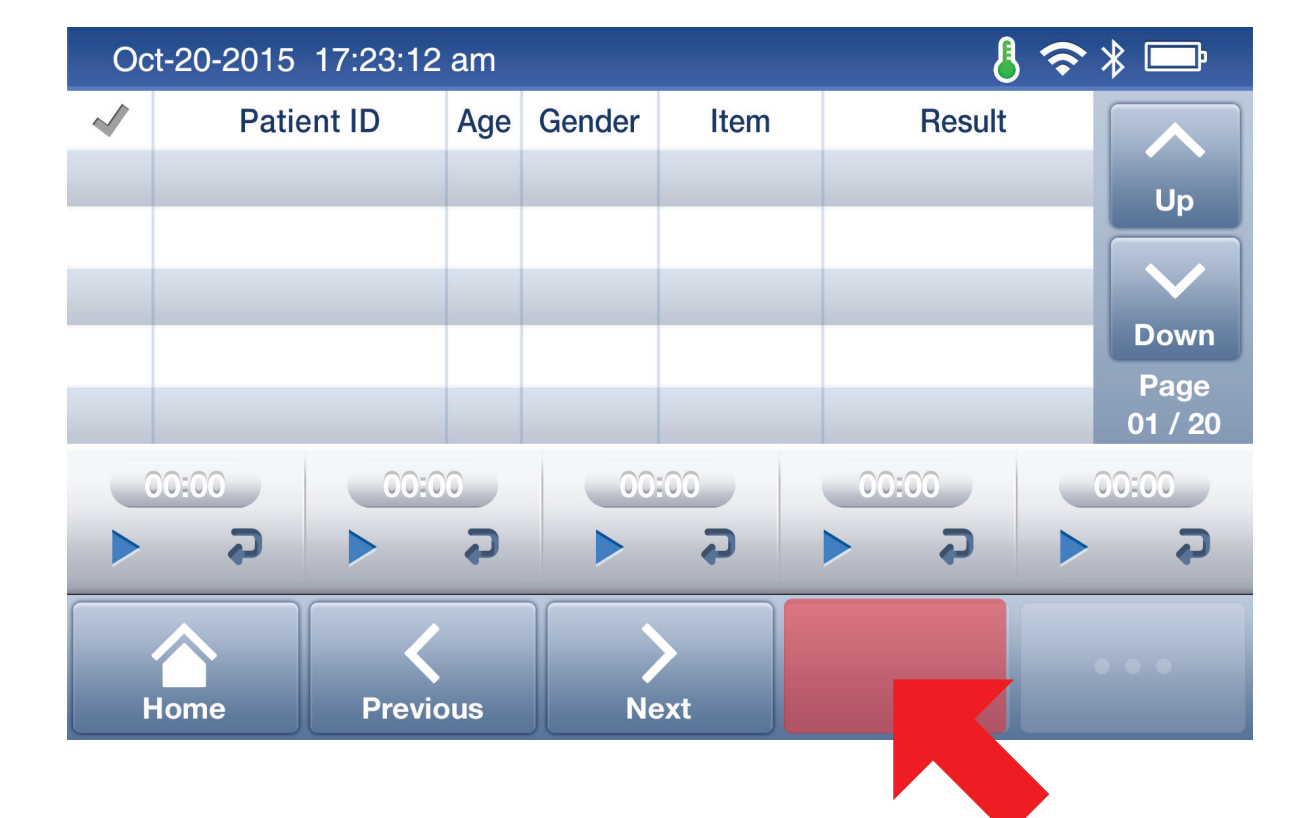
7 Waiting 12 minutes



8 Insert the cartridge into ichromaTM II Reader



9 Press 'Select'



10 Read the test result

