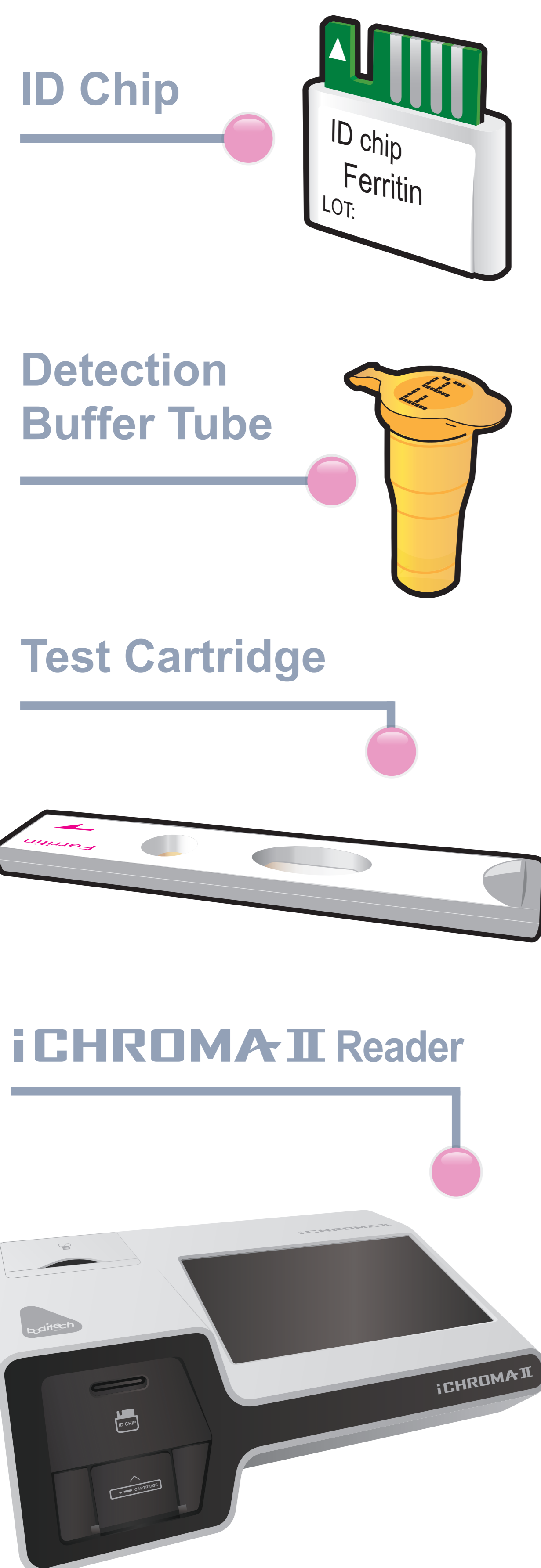


# ichroma™ Ferritin

## Test Setup

### Test Components

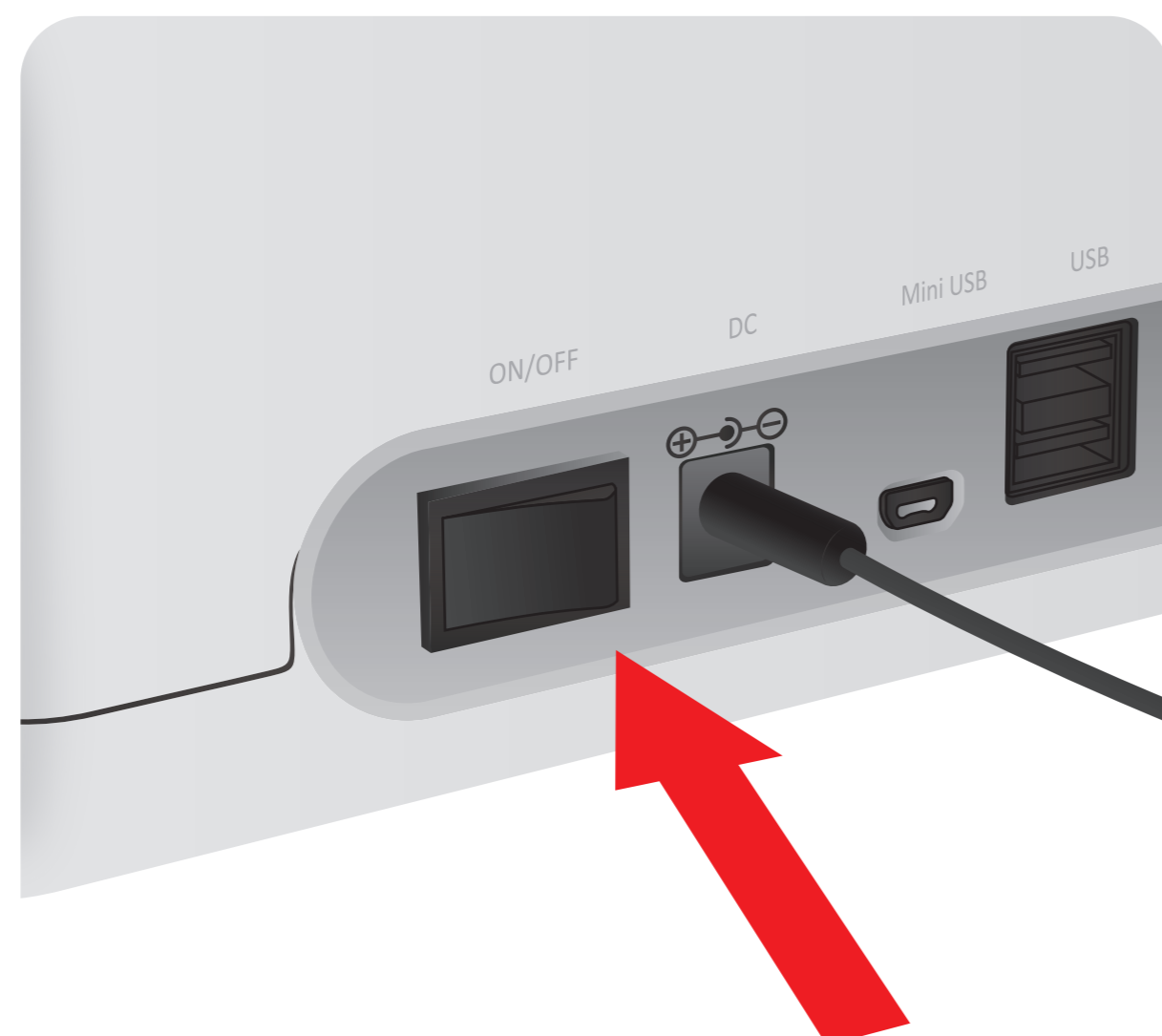


### Important

Allow 'Detection Buffer Tube' to attain room temperature at least for 30 minutes before performing the test

Make sure that lot number of the 'ID Chip' is exactly same as the lot number of 'Test Cartridge' and 'Detection Buffer Tube'

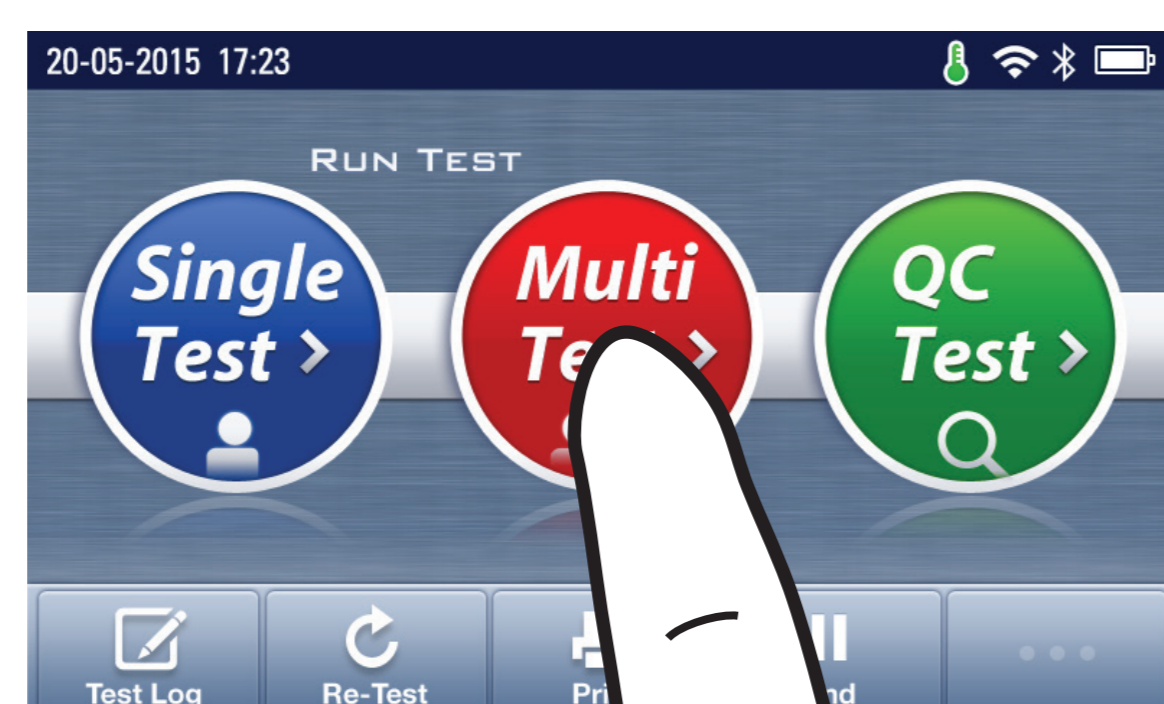
- 1 Turn the power switch 'On'



- 2 Insert ID Chip



- 3 Press 'Multi-test'

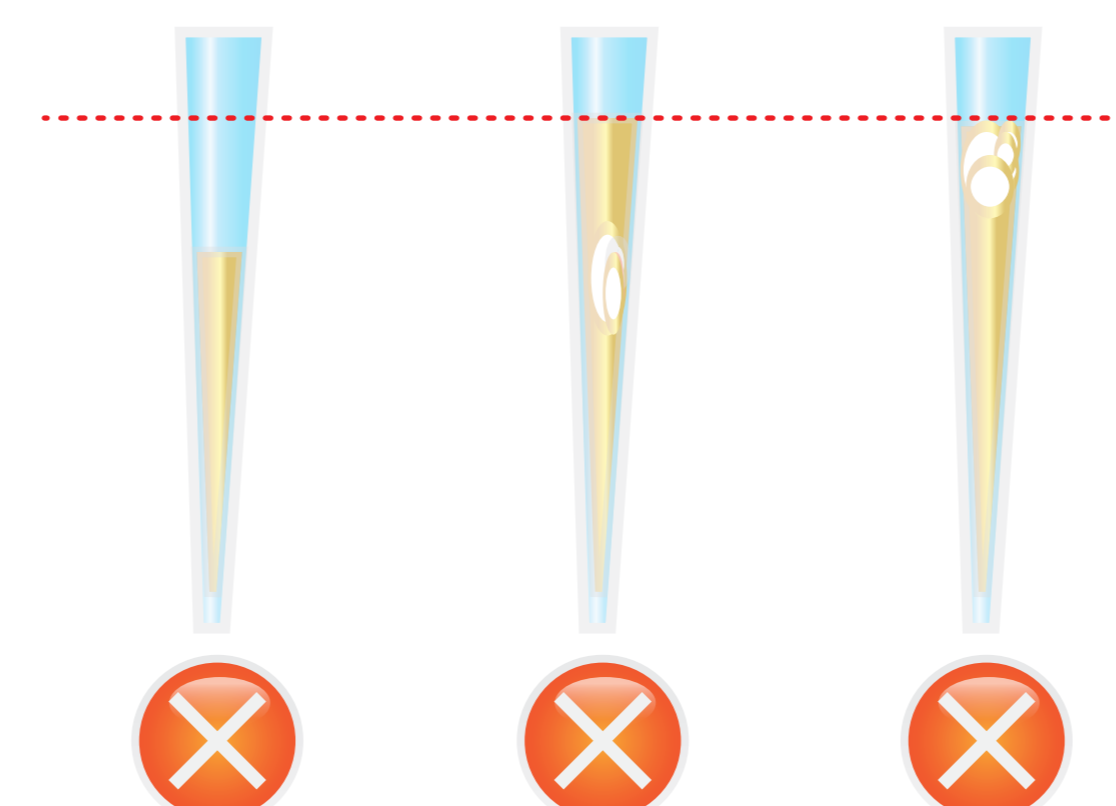


## Test Procedure

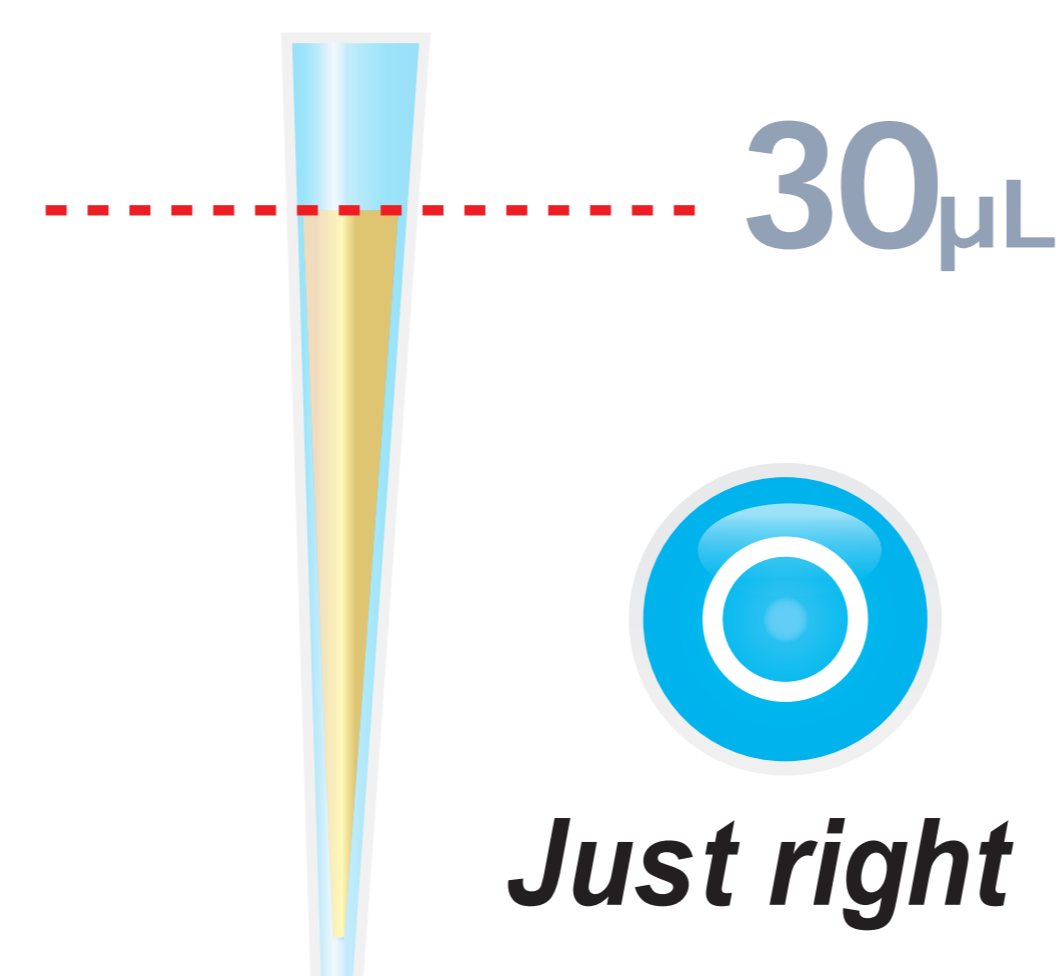
- 1 Draw the Test Sample



Draw 30 µL of plasma and serum or control with a transfer pipette



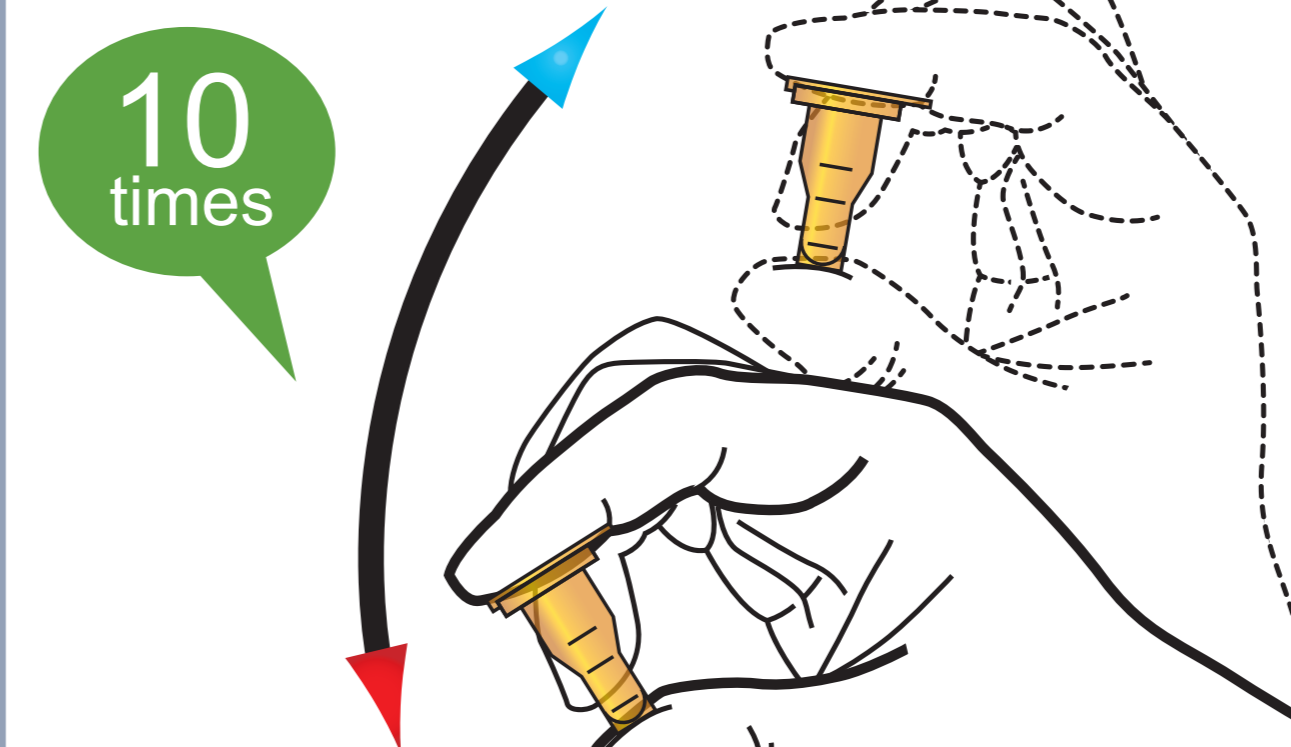
Too little or Bubble In the middle or near the top of the tip



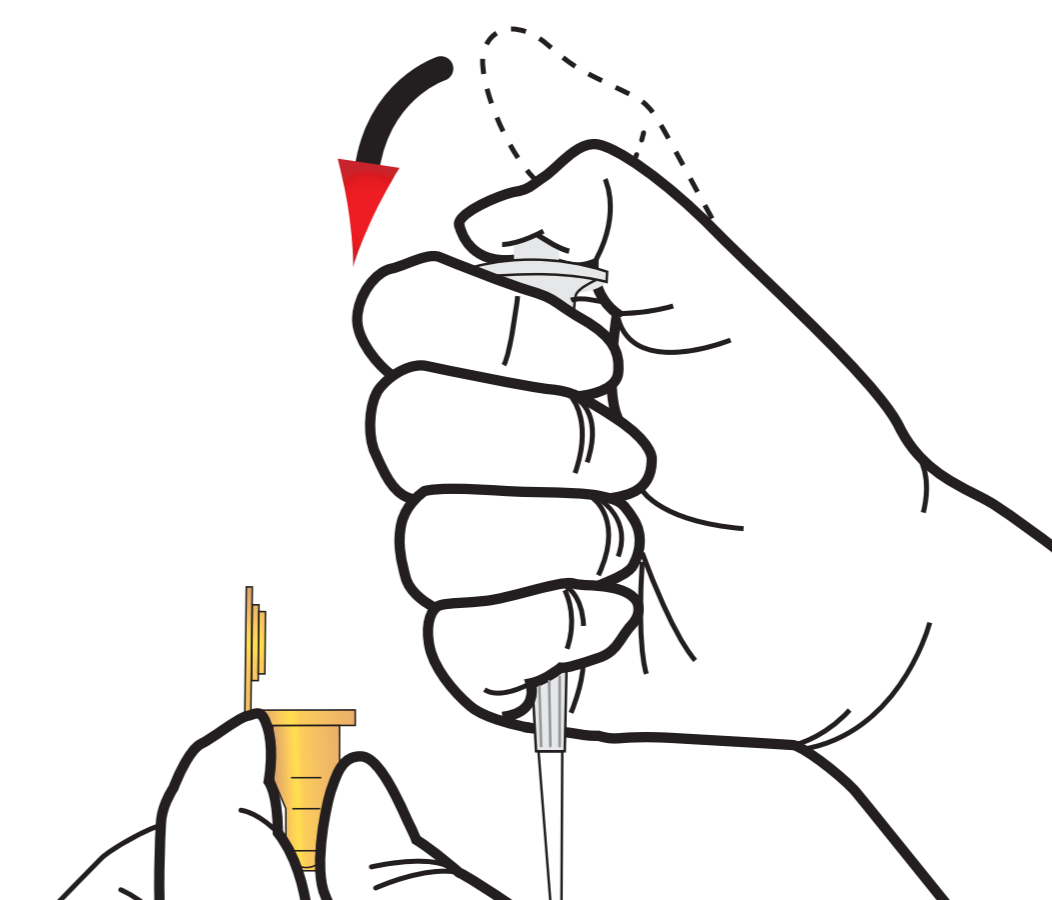
- 2 Add it into Detection Buffer Tube



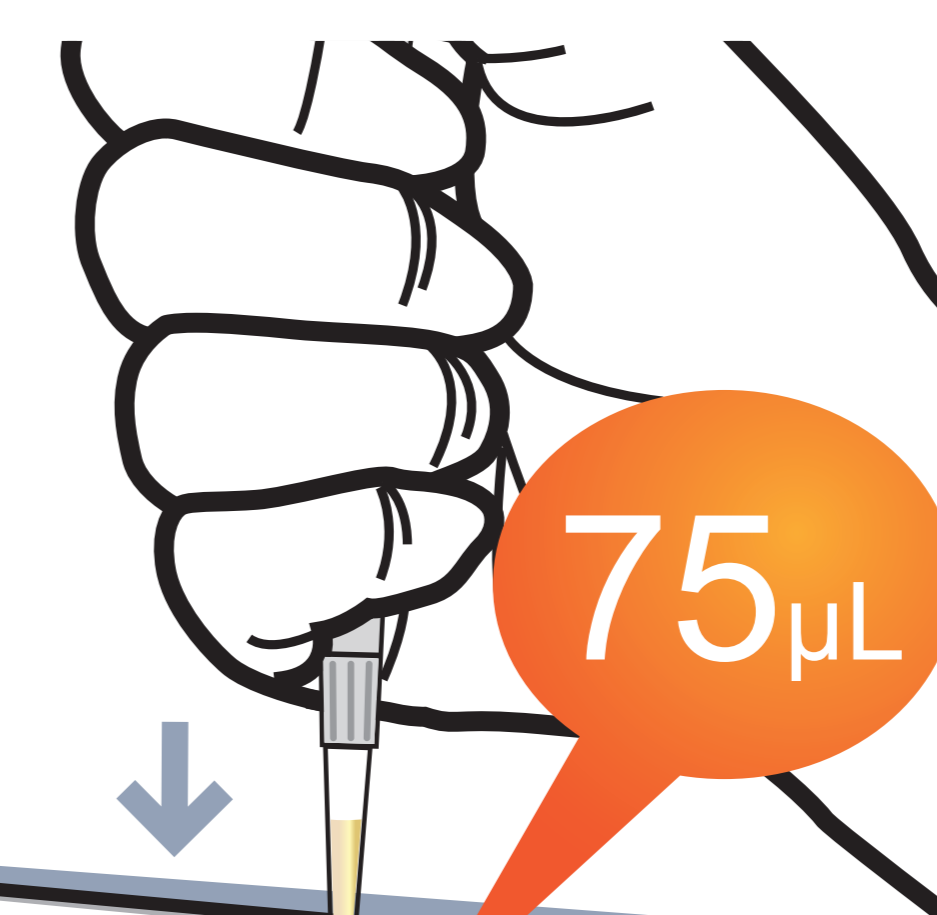
- 3 Shake the sample mixture tube



- 4 Draw the sample mixture



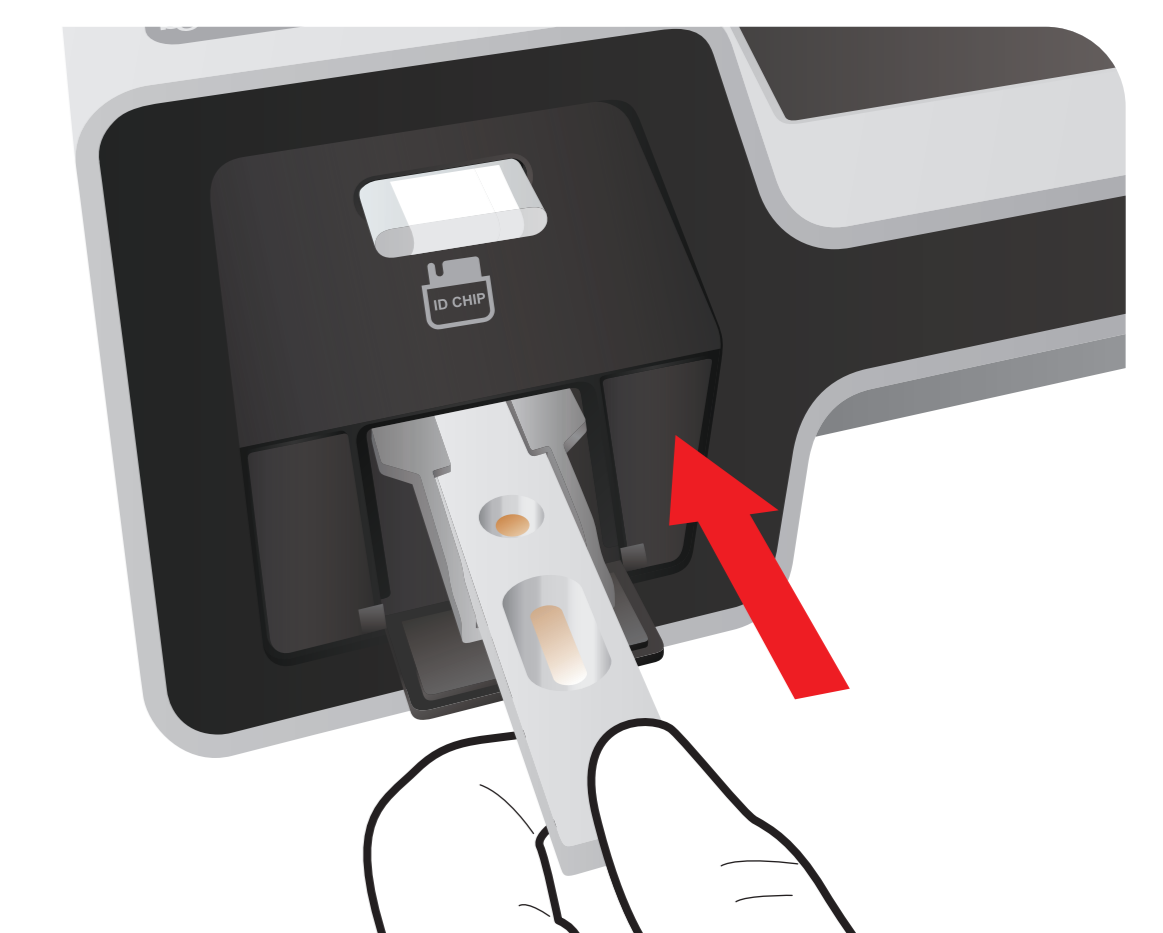
- 5 Load the sample mixture



- 6 Waiting 10 minutes

Maintain 25°C degrees

- 7 Insert the cartridge into ichroma™ II Reader



- 8 Press 'Select'



- 9 Read the test result

