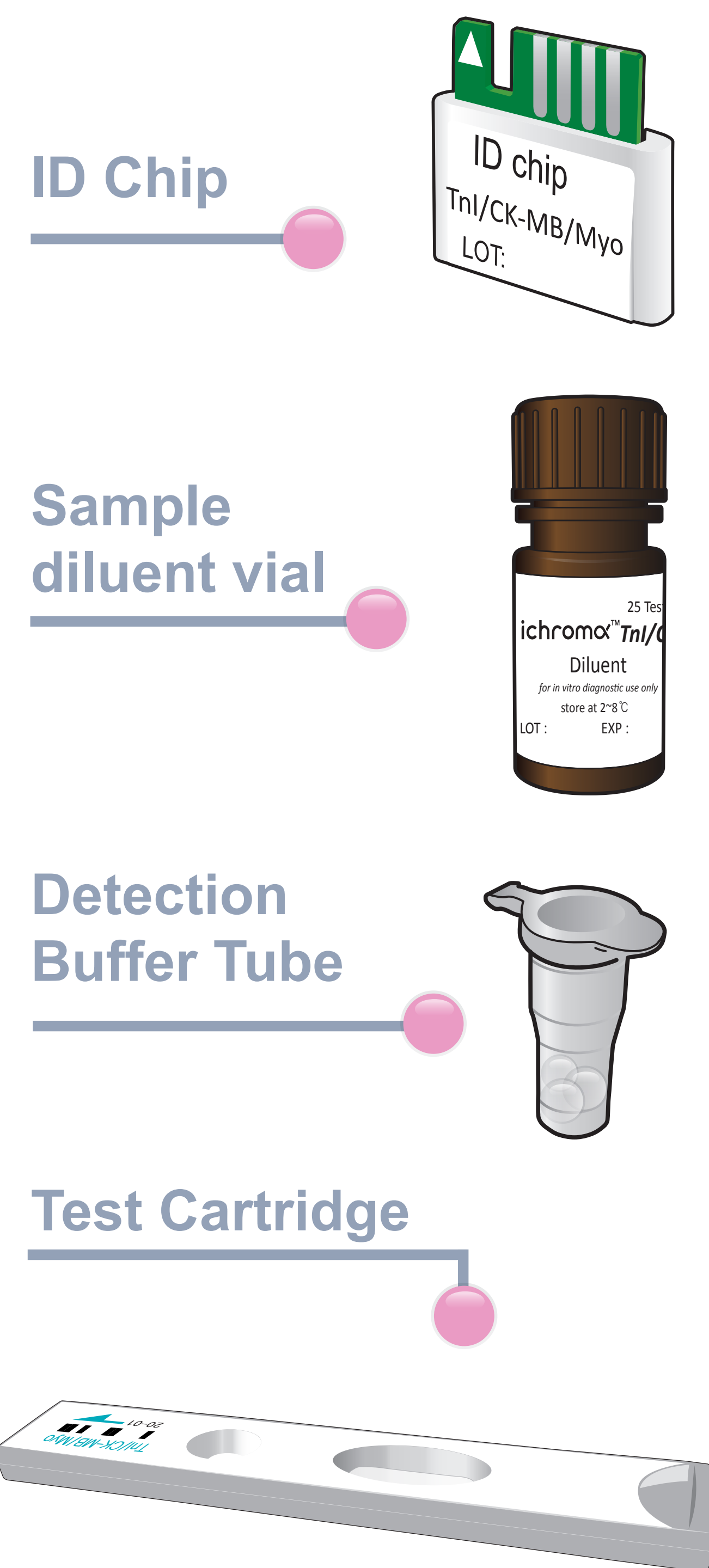


ichromα™ Cardiac Triple

Test Setup

Test Components



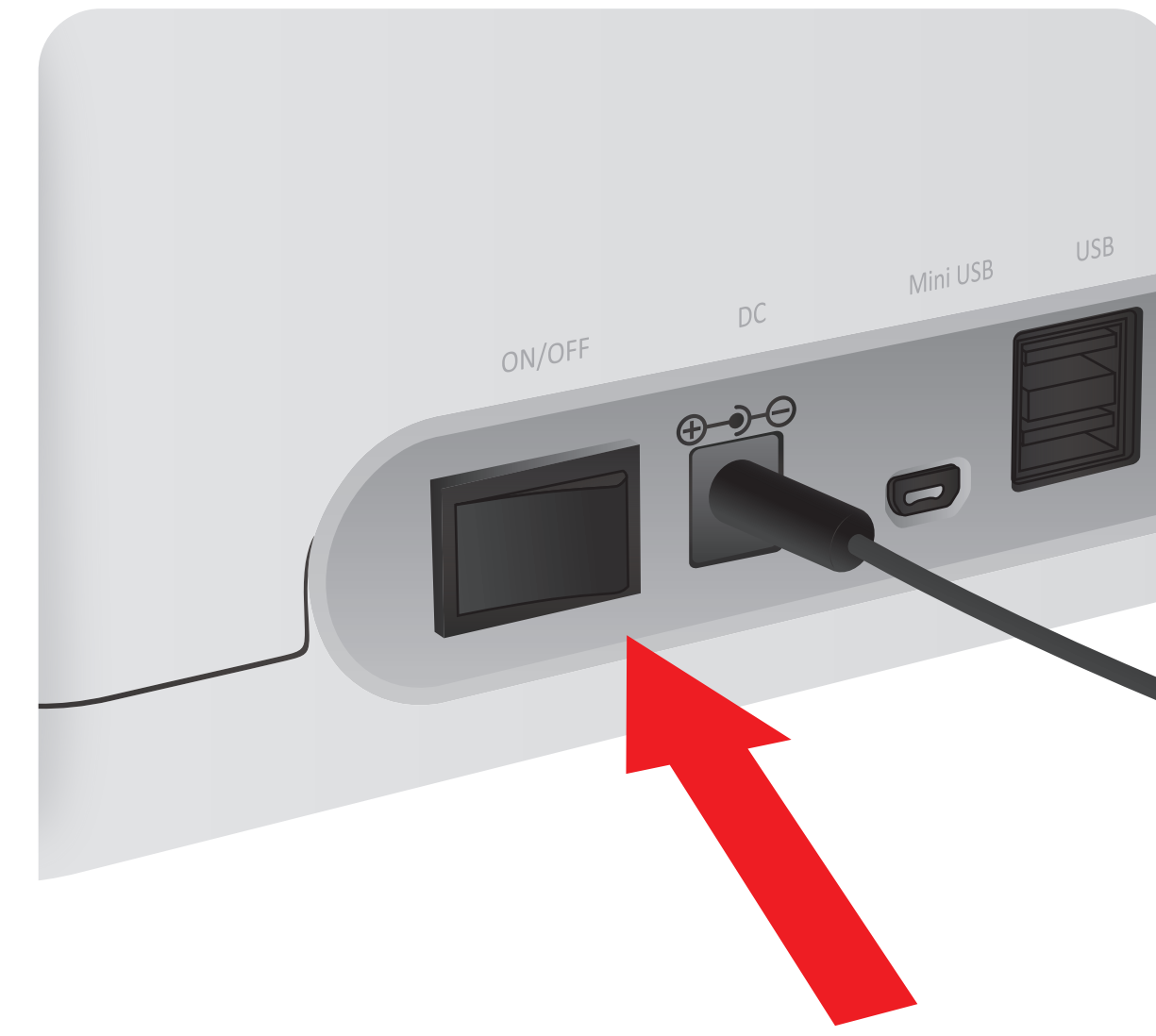
iCHROMA-II Reader



Important

- Allow 'Detection Buffer Tube' to attain room temperature at least for 30 minutes before performing the test
- Make sure that lot number of the 'ID Chip' is exactly same as the lot number of 'Test Cartridge' and 'Detection Buffer Tube'

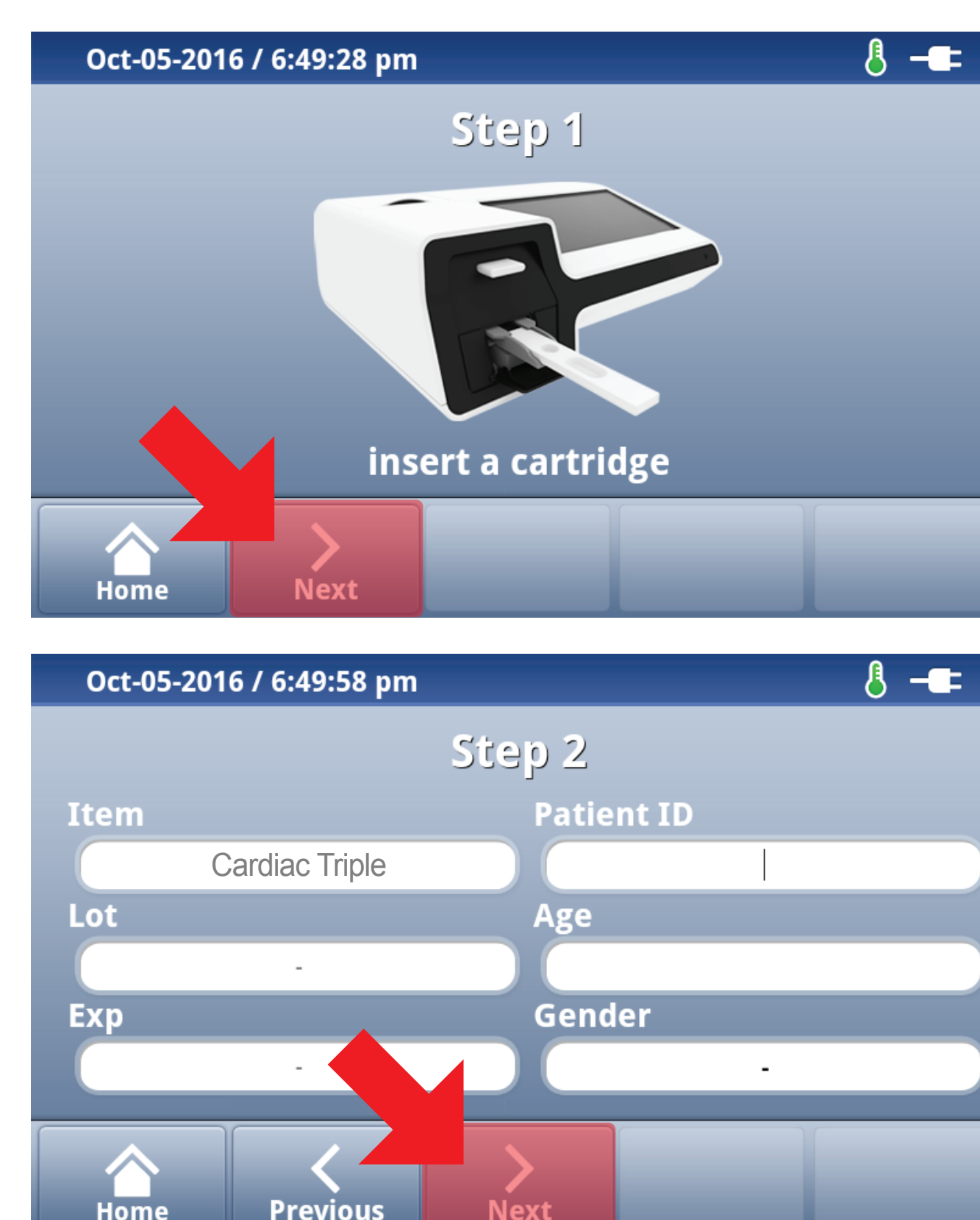
1 Turn the power switch 'On'



2 Insert ID Chip

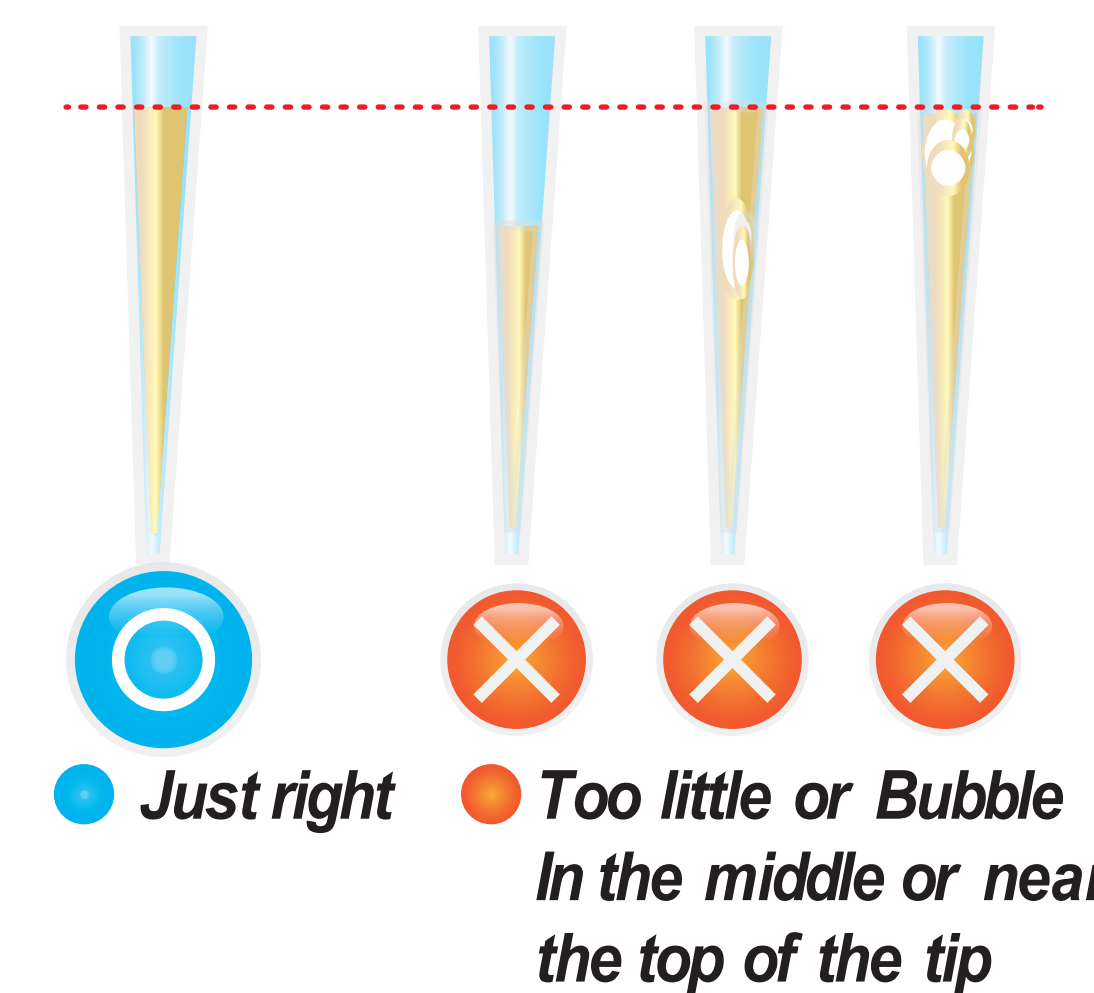


3 Press 'Select'

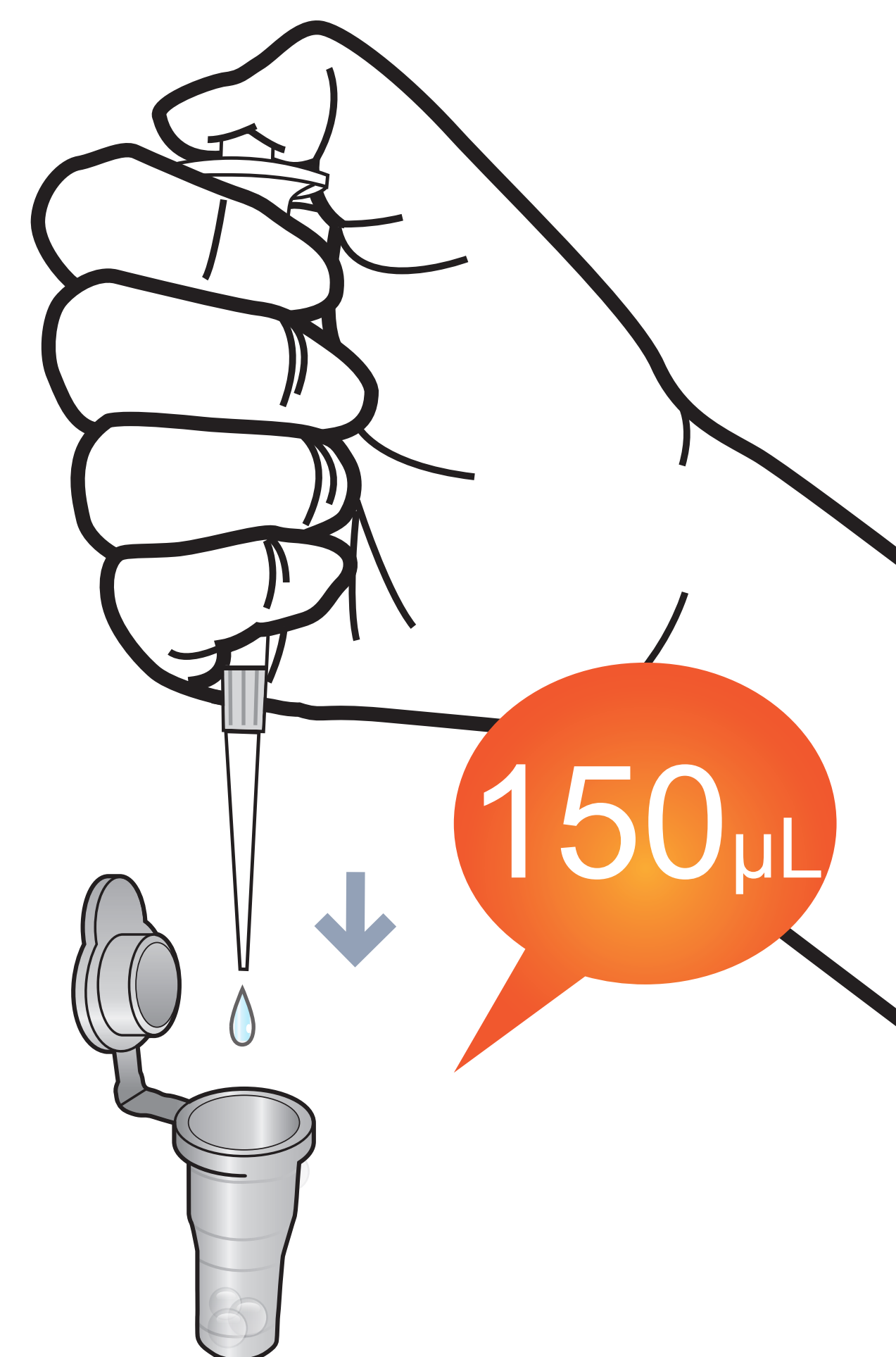


Test Procedure

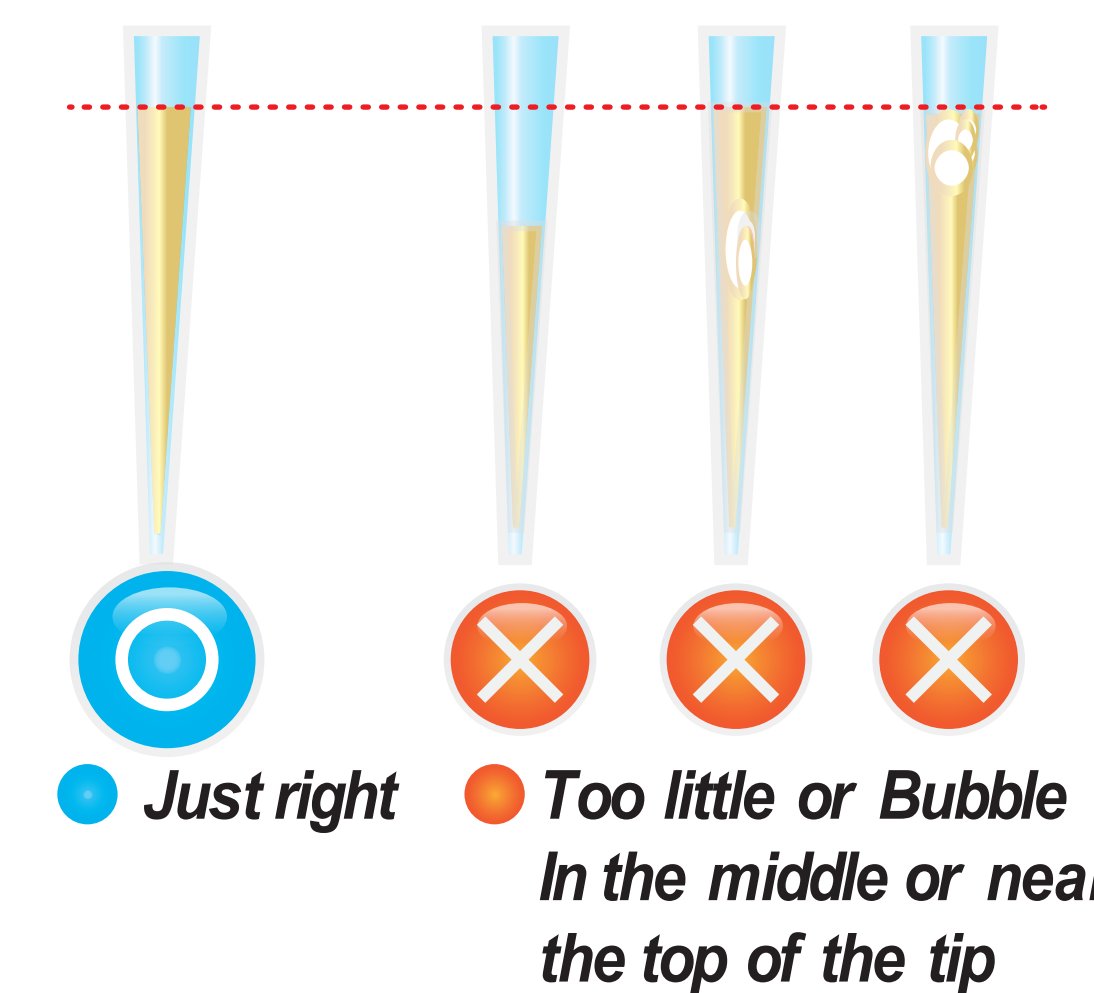
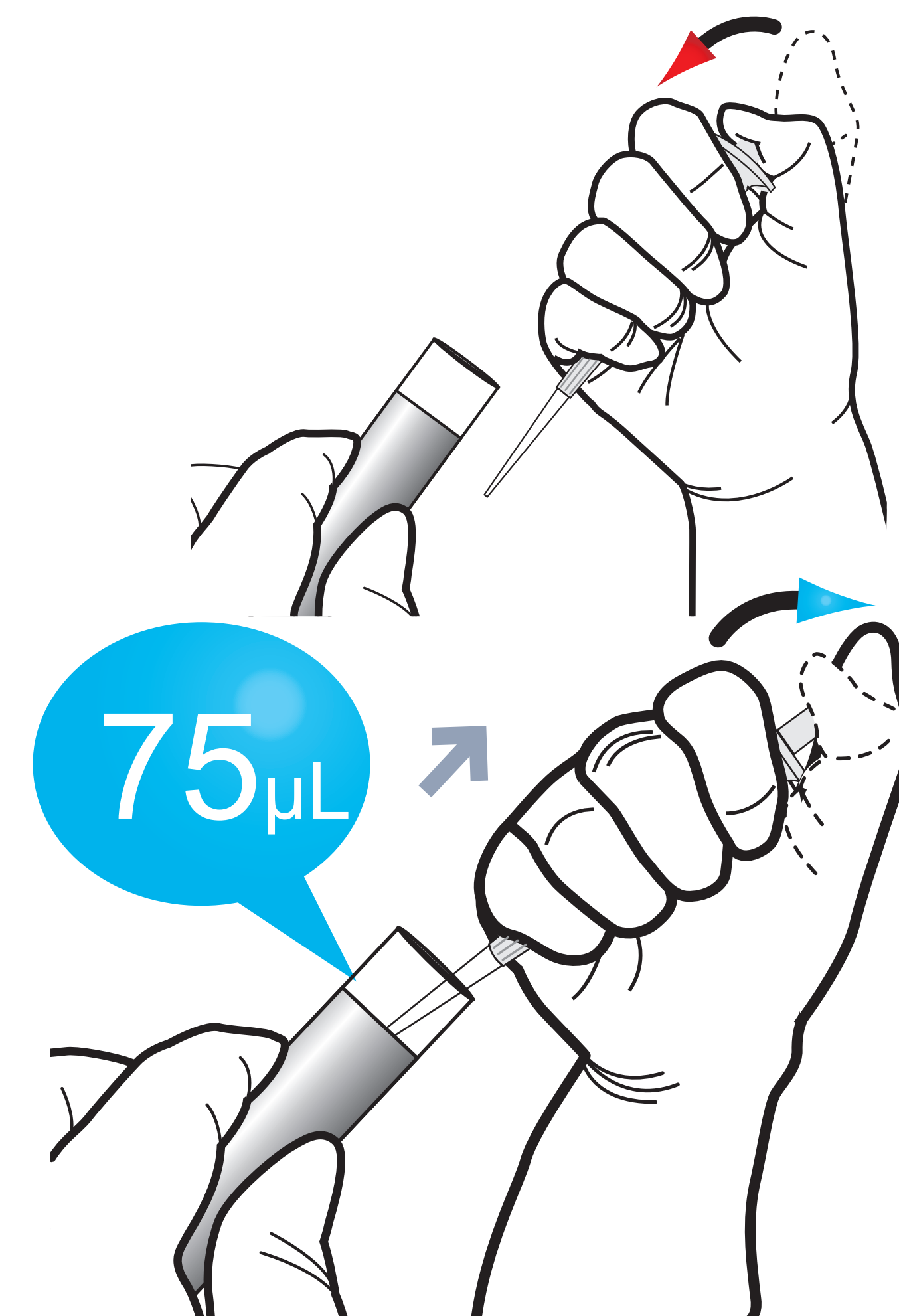
1 Draw the diluent from diluent vial 150 µL



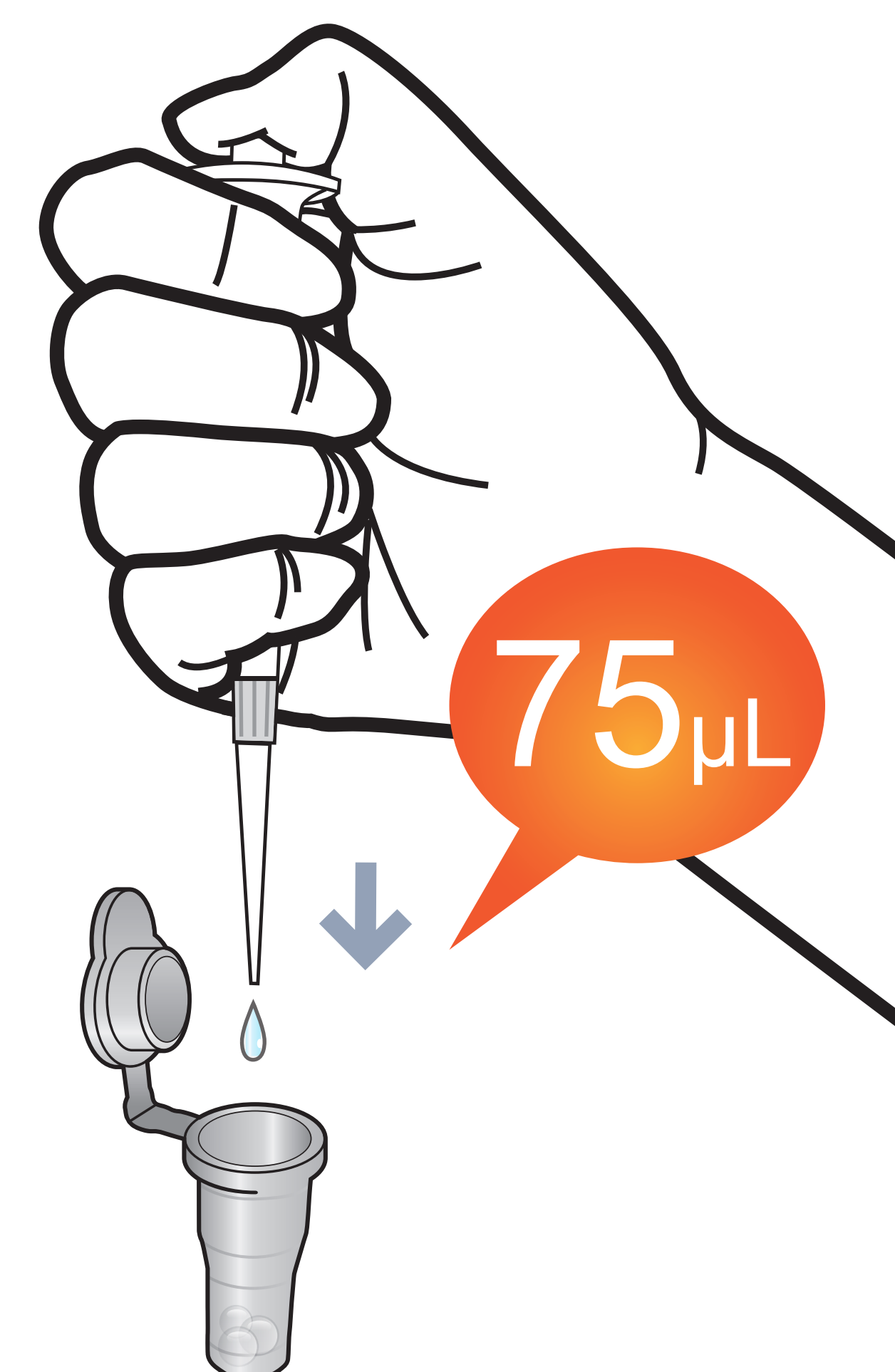
2 Add it into detection buffer tube



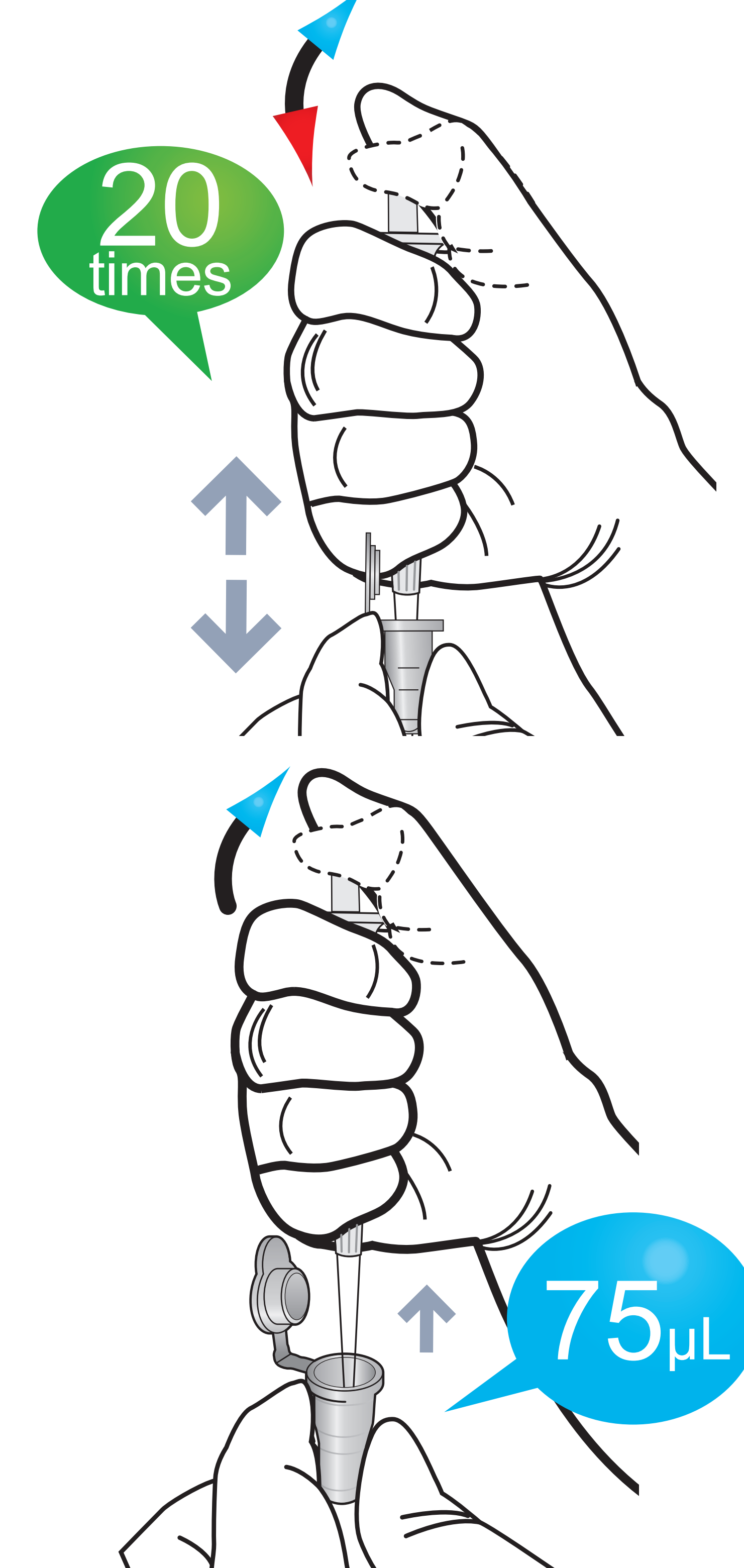
3 Draw 75 µL (Human whole blood / Serum / Plasma / Control)



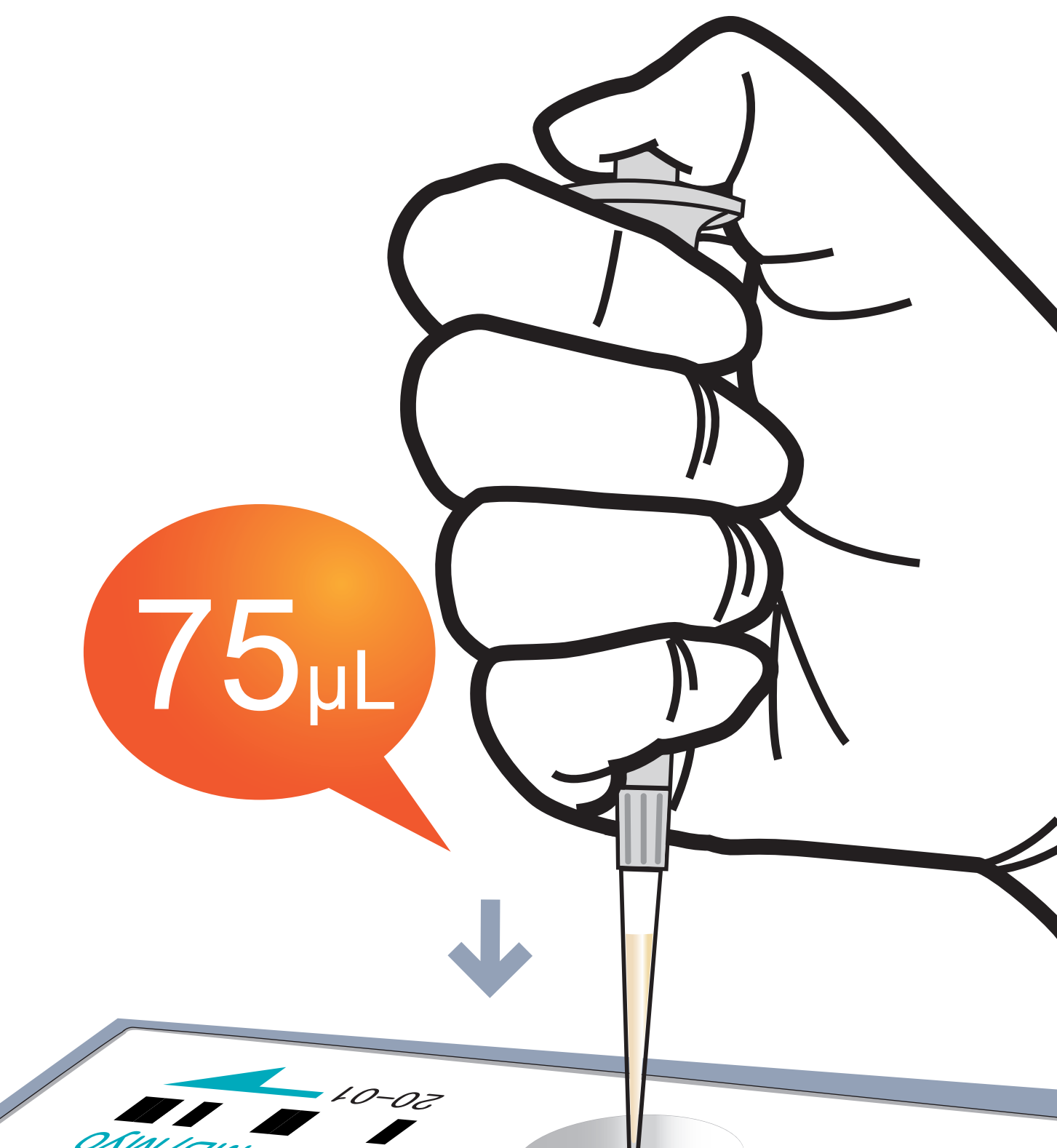
4 Add it into detection buffer tube



5 Mix well by pipetting 20 times.



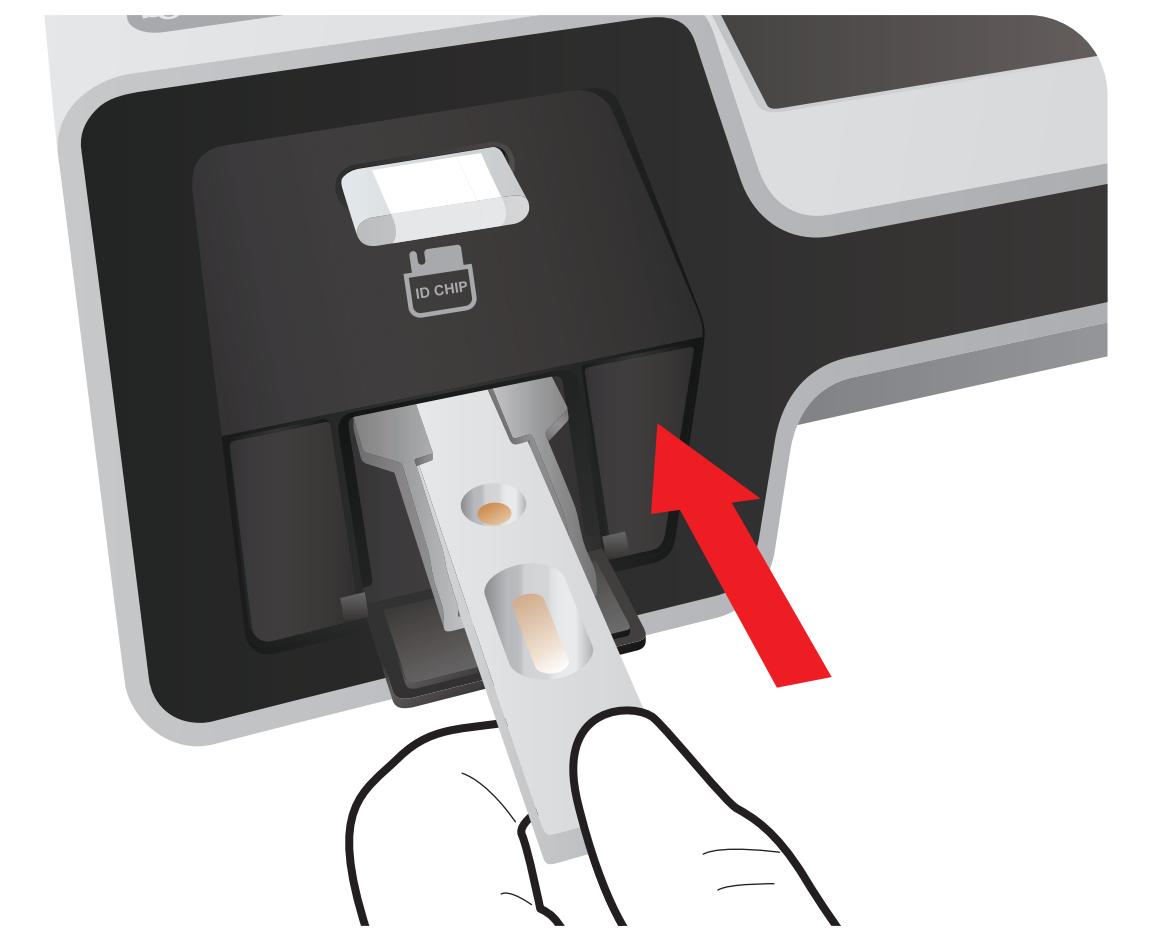
6 Load the sample Mixture



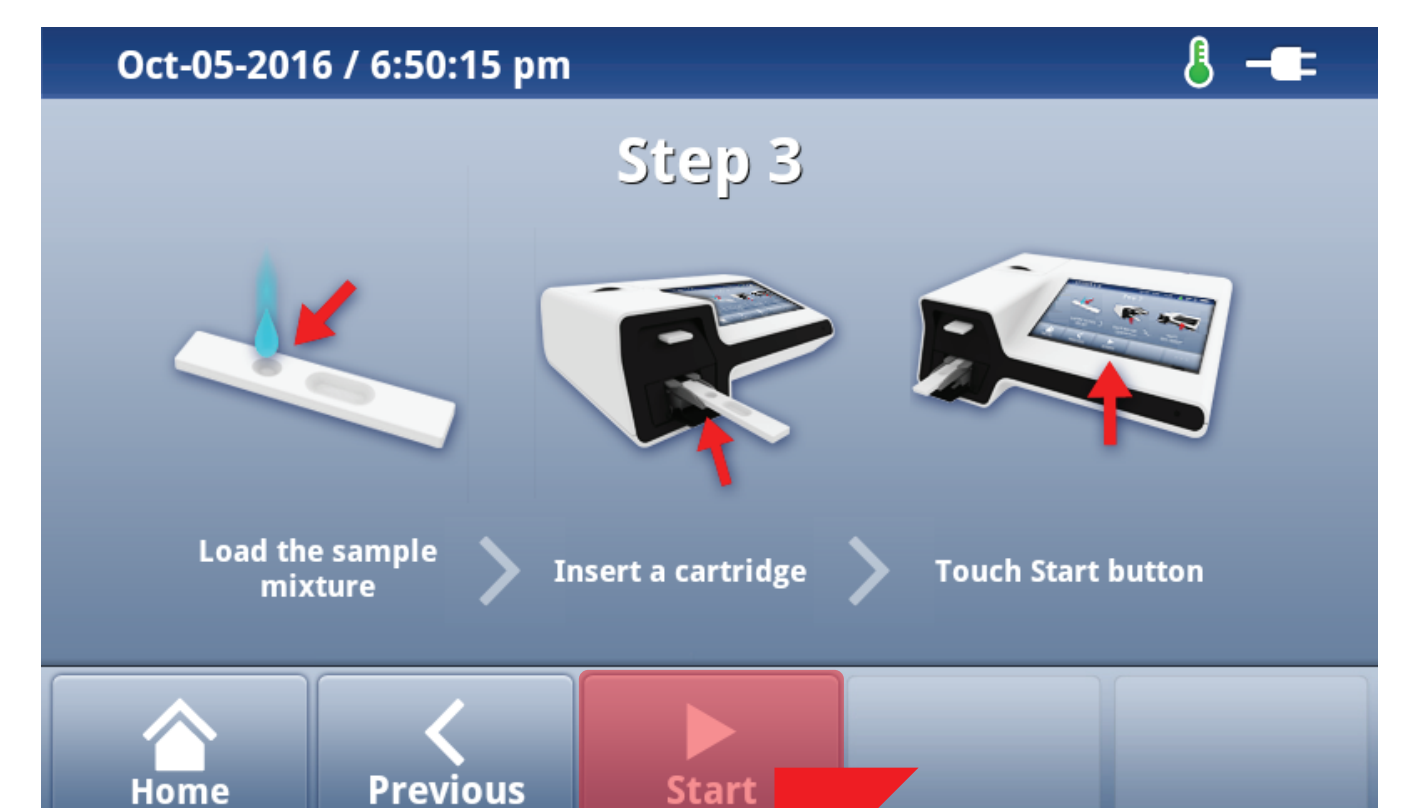
7 Waiting 12 minutes



8 Insert the test cartridge



9 Press 'Select'



10 Read the test result

