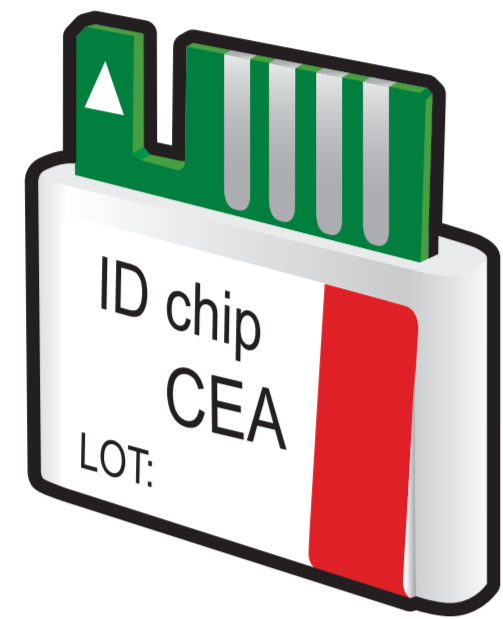


ichroma™ CEA

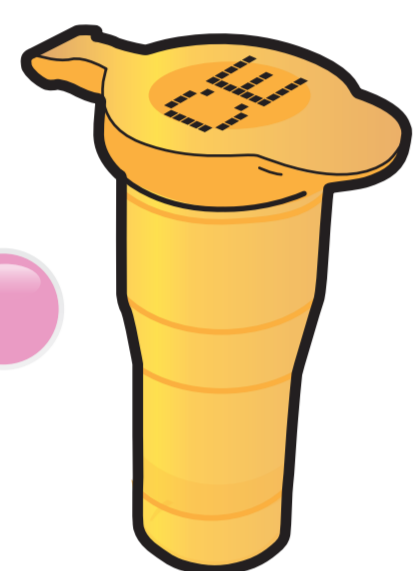
Test Setup

Test Components

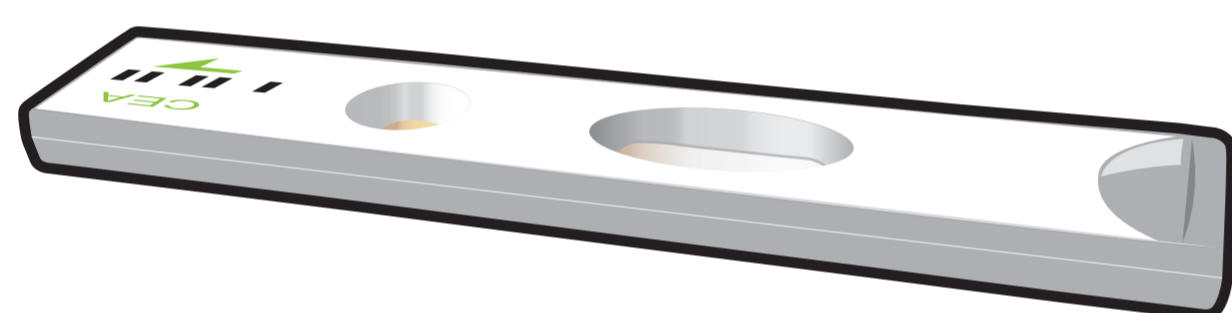
ID Chip



Detection Buffer Tube



Test Cartridge



iCHROMA-II Reader

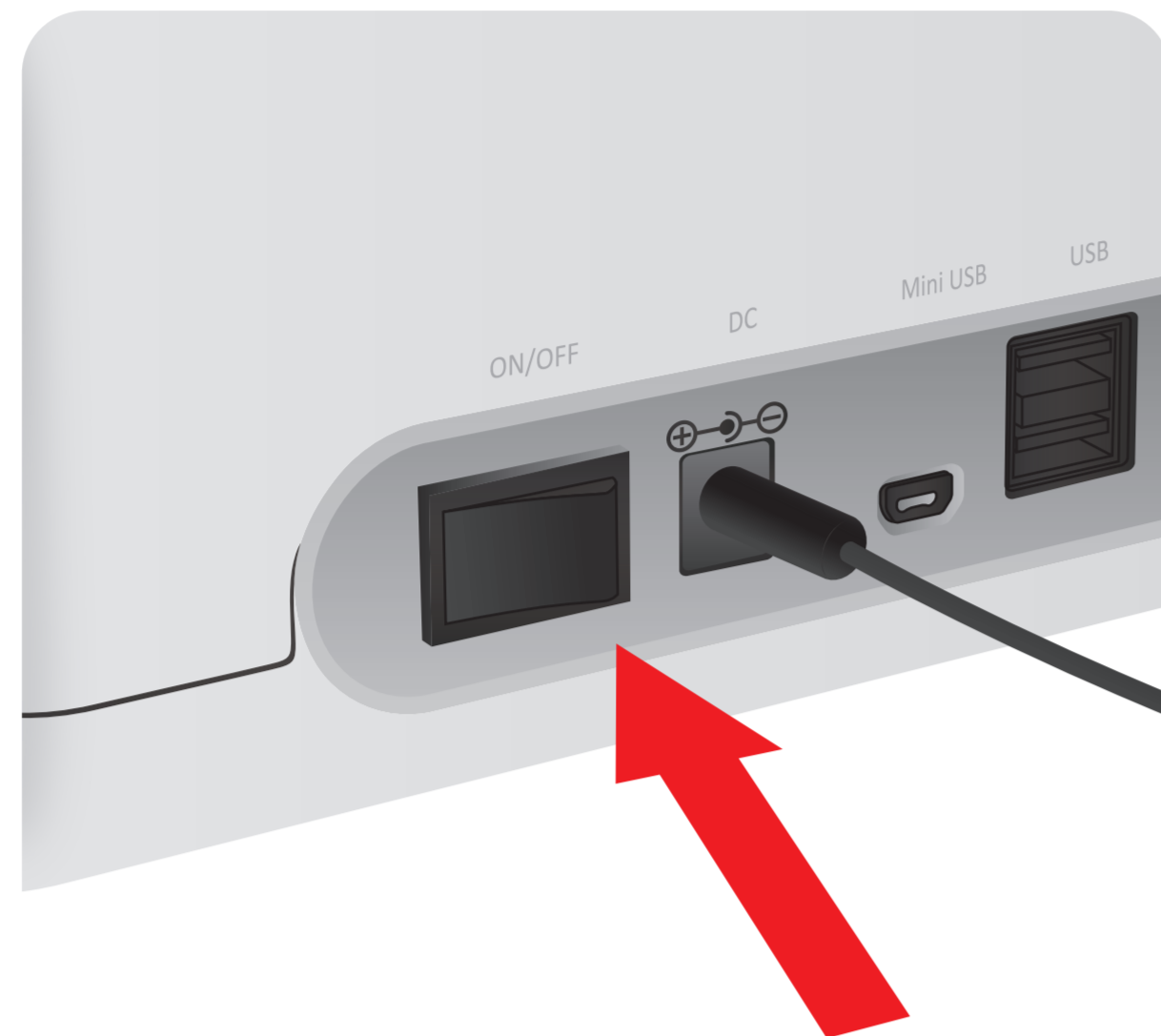


Important

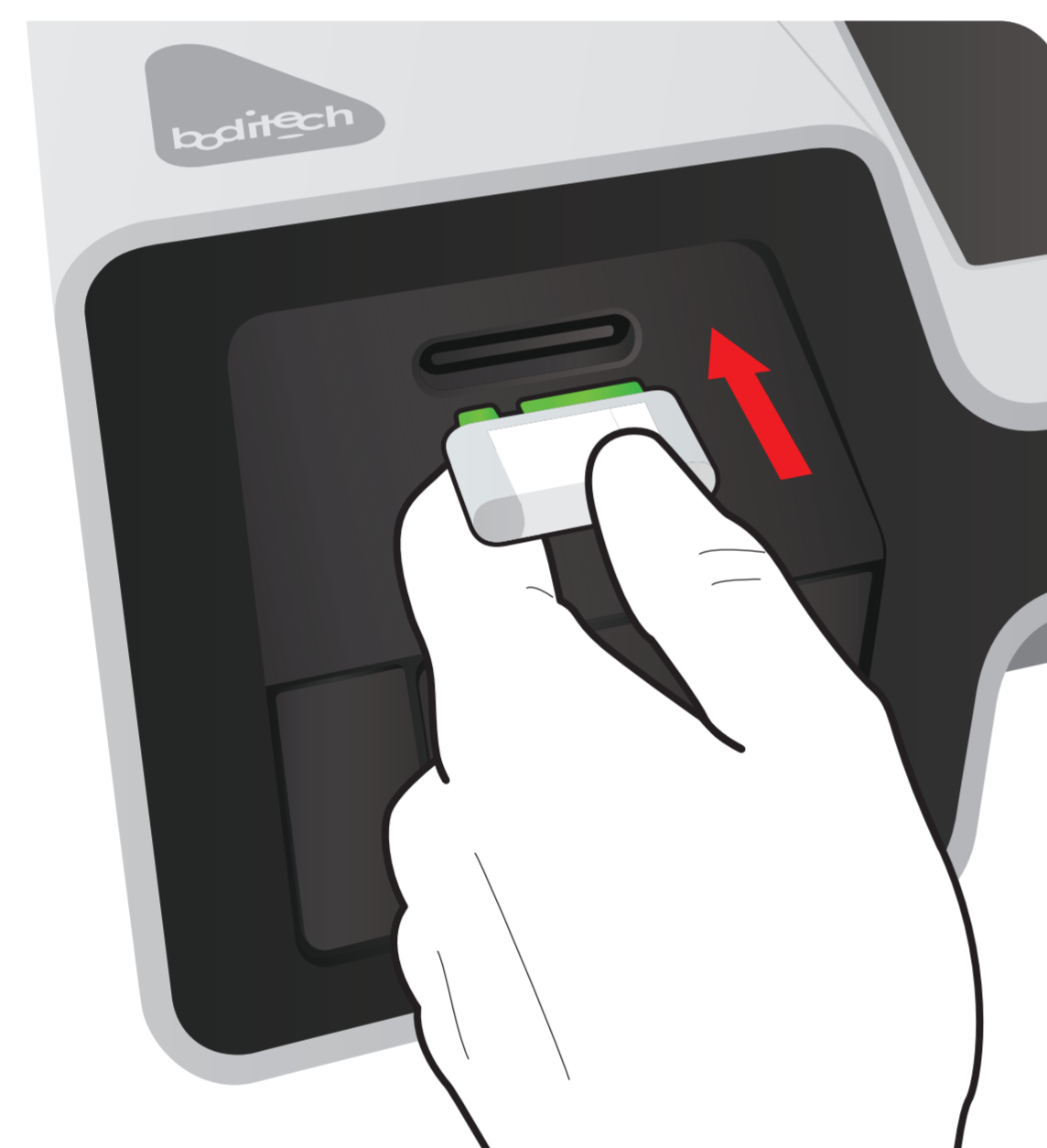
Allow 'Detection Buffer Tube' to attain room temperature at least for 30 minutes before performing the test

Make sure that lot number of the 'ID Chip' is exactly same as the lot number of 'Test Cartridge' and Detection Buffer Tube

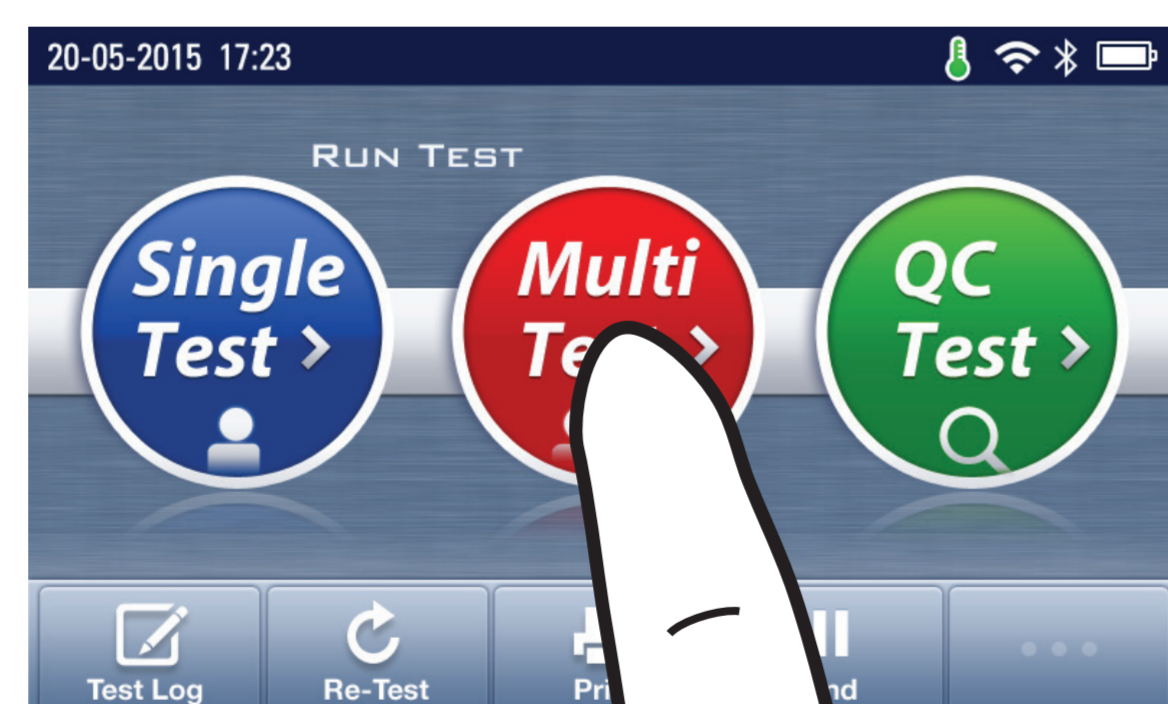
- 1 Turn the power switch 'On'



- 2 Insert ID Chip



- 3 Press 'Multi-test'

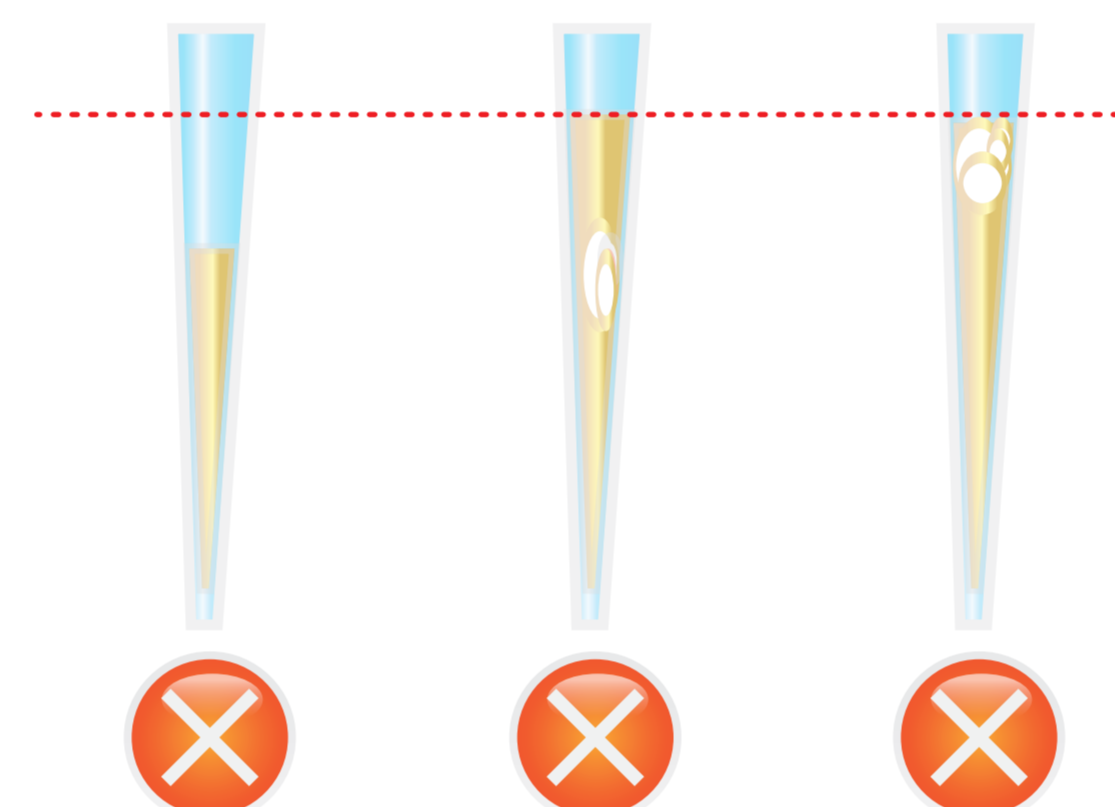


Test Procedure

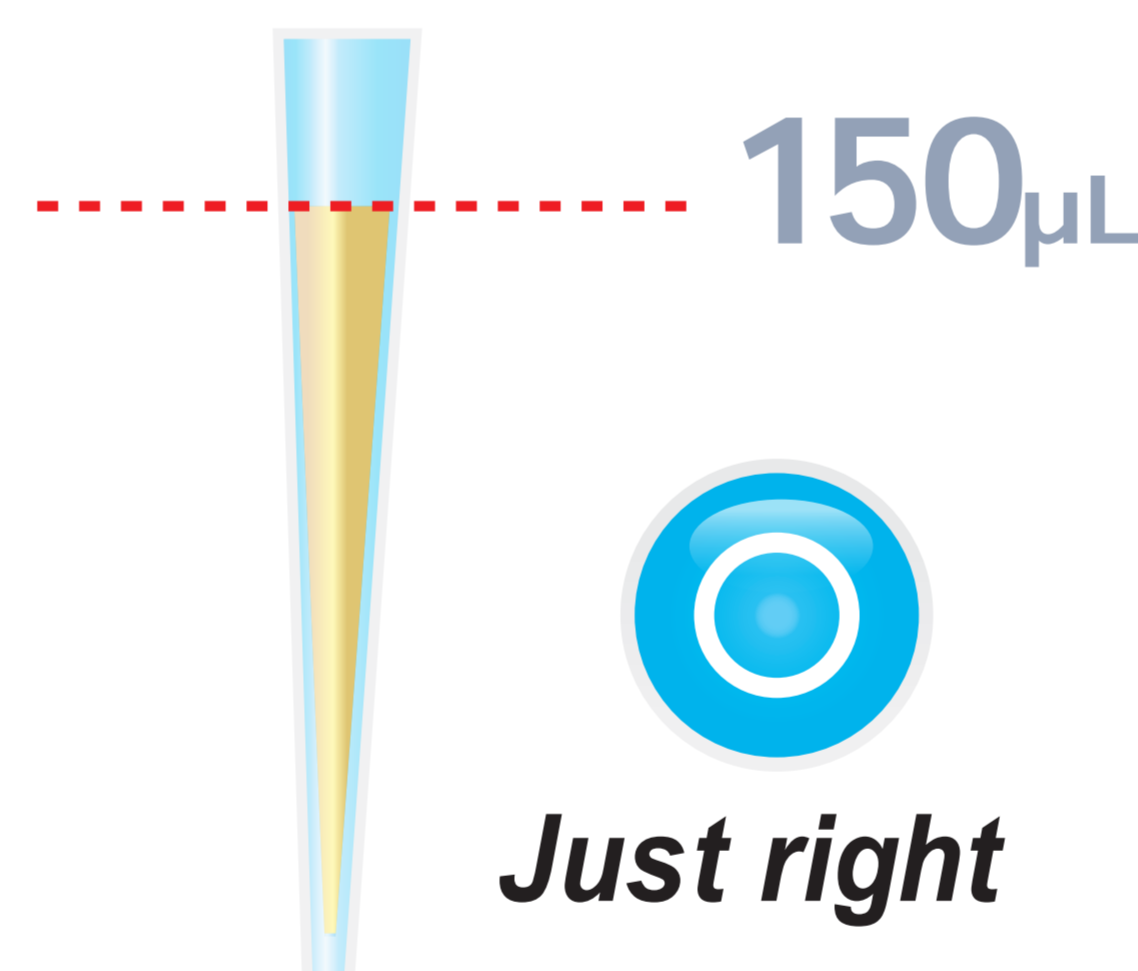
- 1 Draw the test sample



Draw 150 µL of plasma and serum with a transfer pipette



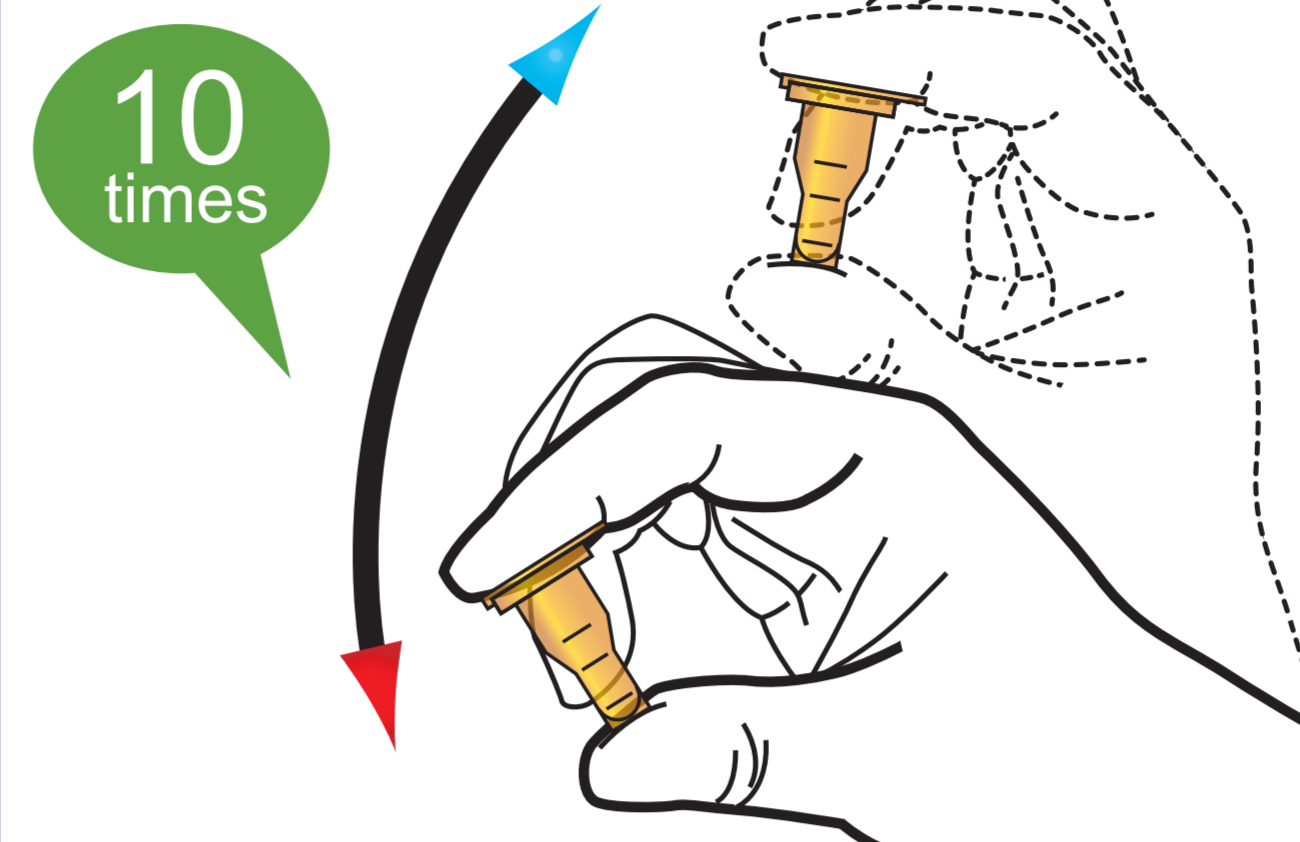
Too little or Bubble In the middle or near the top of the tip



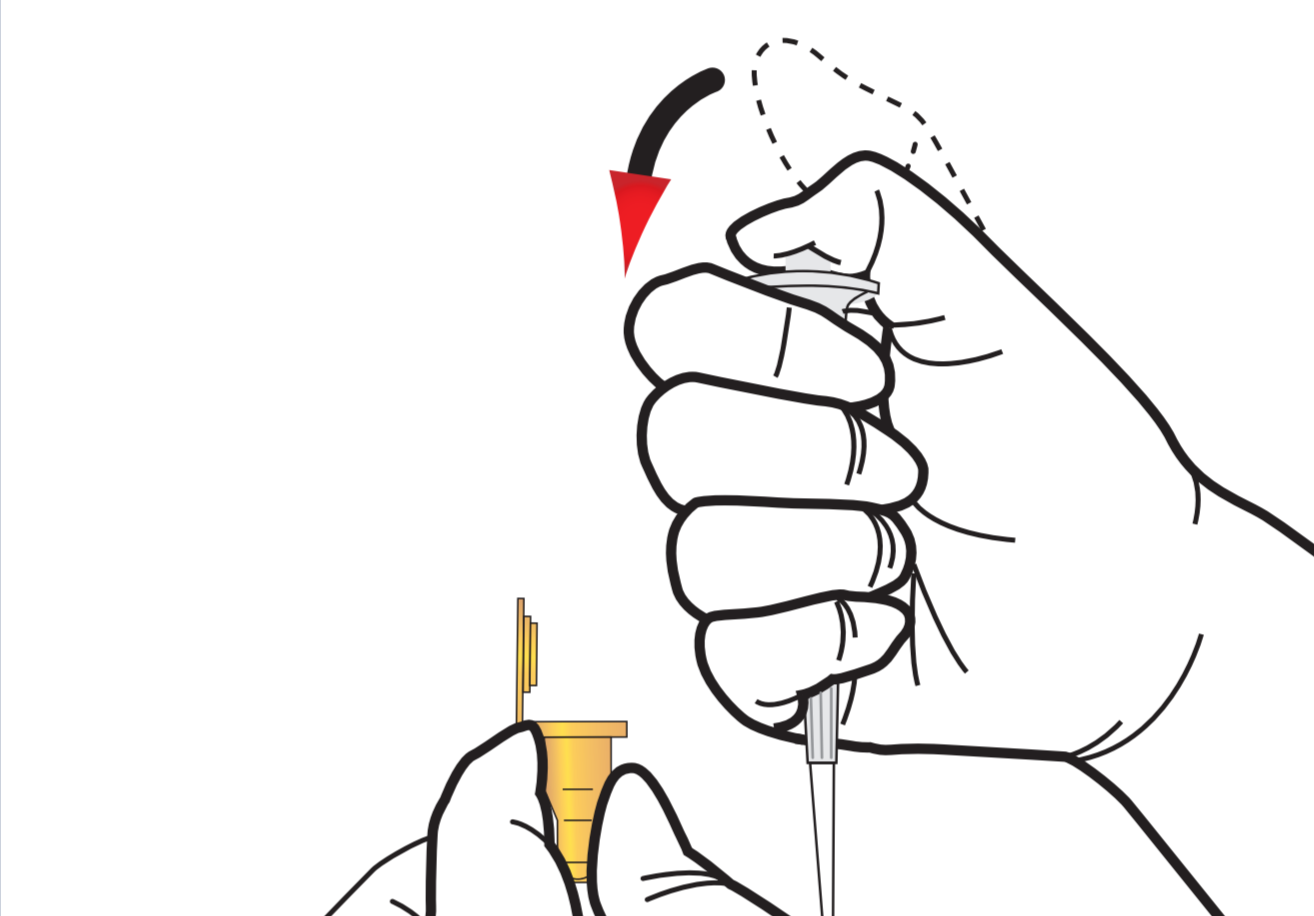
- 2 Add it into detection buffer tube



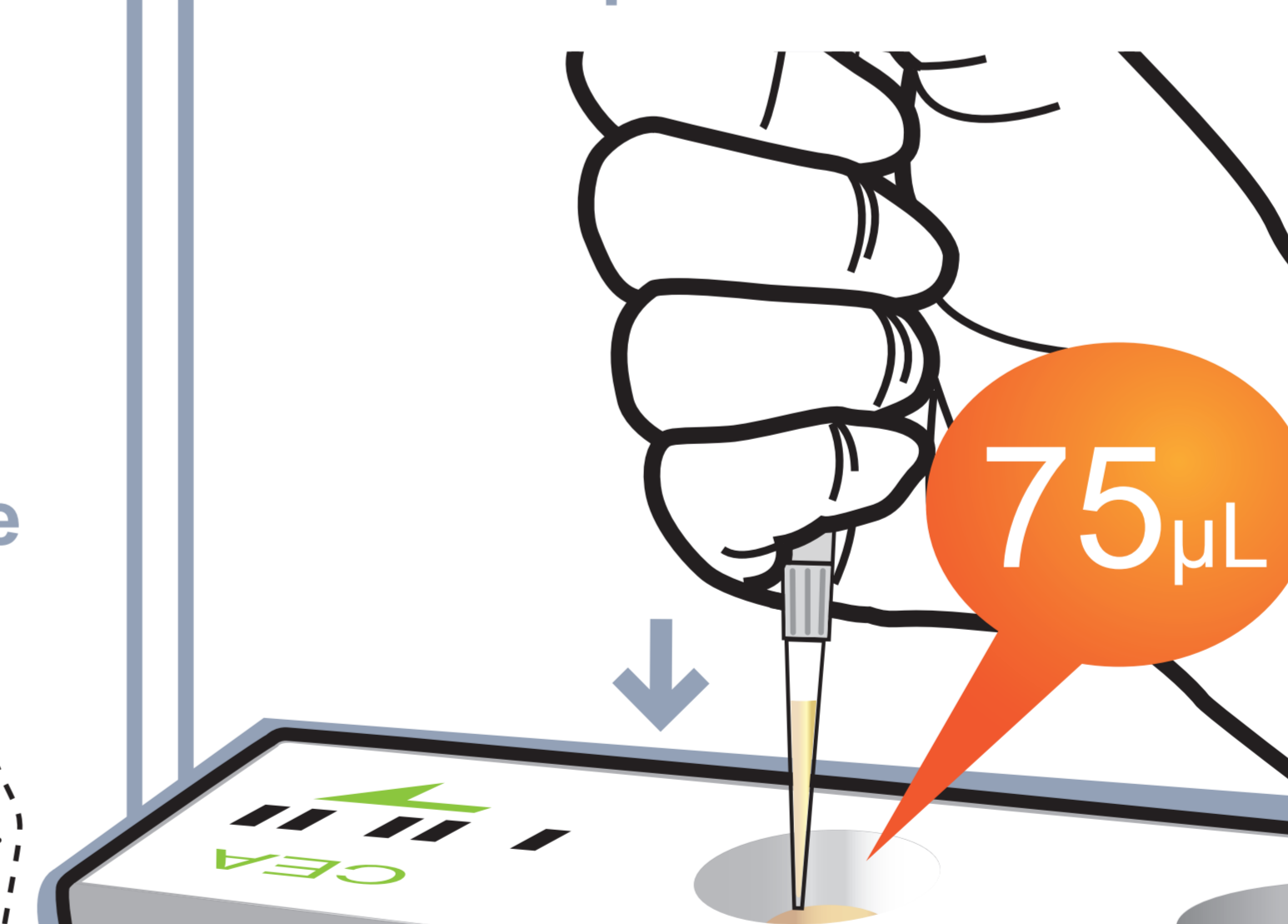
- 3 Shake the sample mixture tube



- 4 Draw the sample mixture



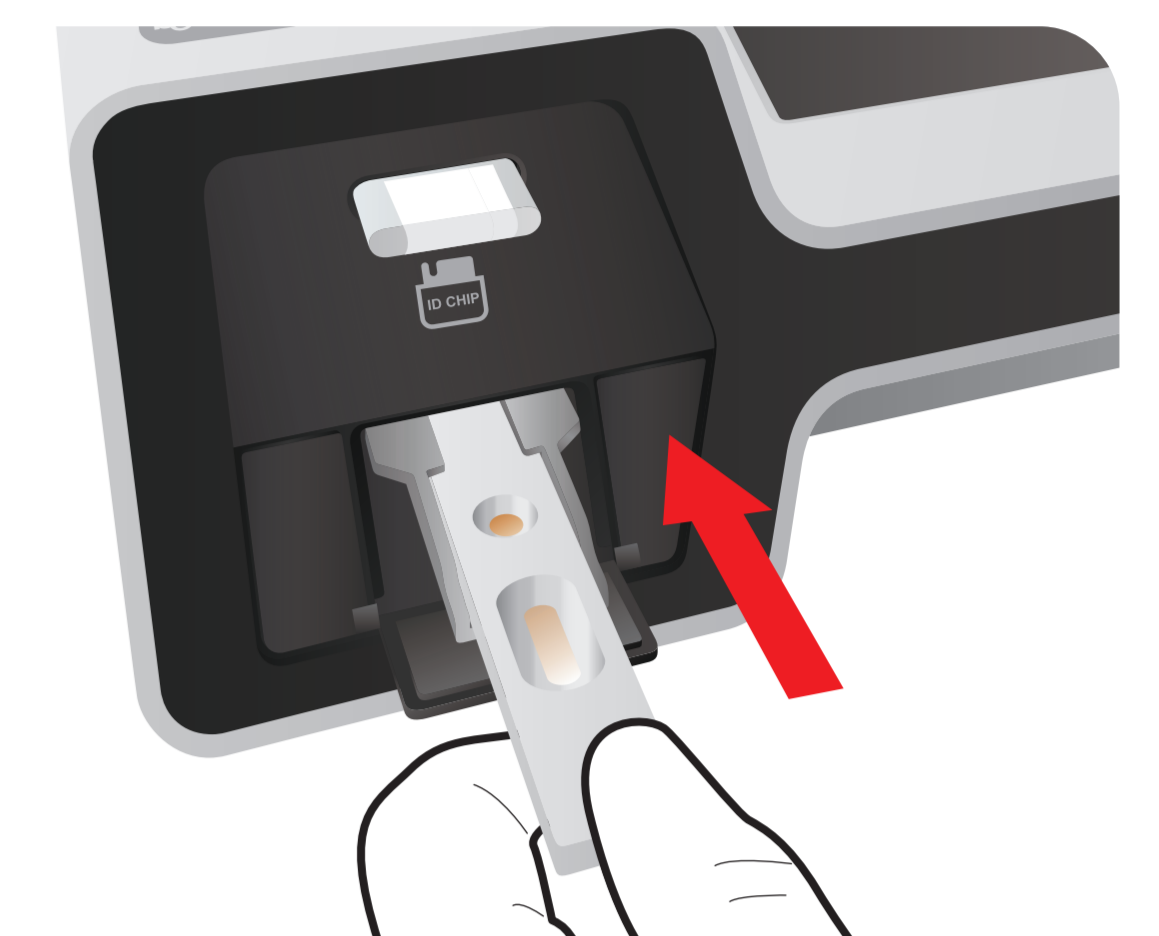
- 5 Load the sample mixture



- 6 Waiting 12 minutes



- 7 Insert the cartridge into ichroma™ II Reader



- 8 Press 'Select'



- 9 Read the test result

