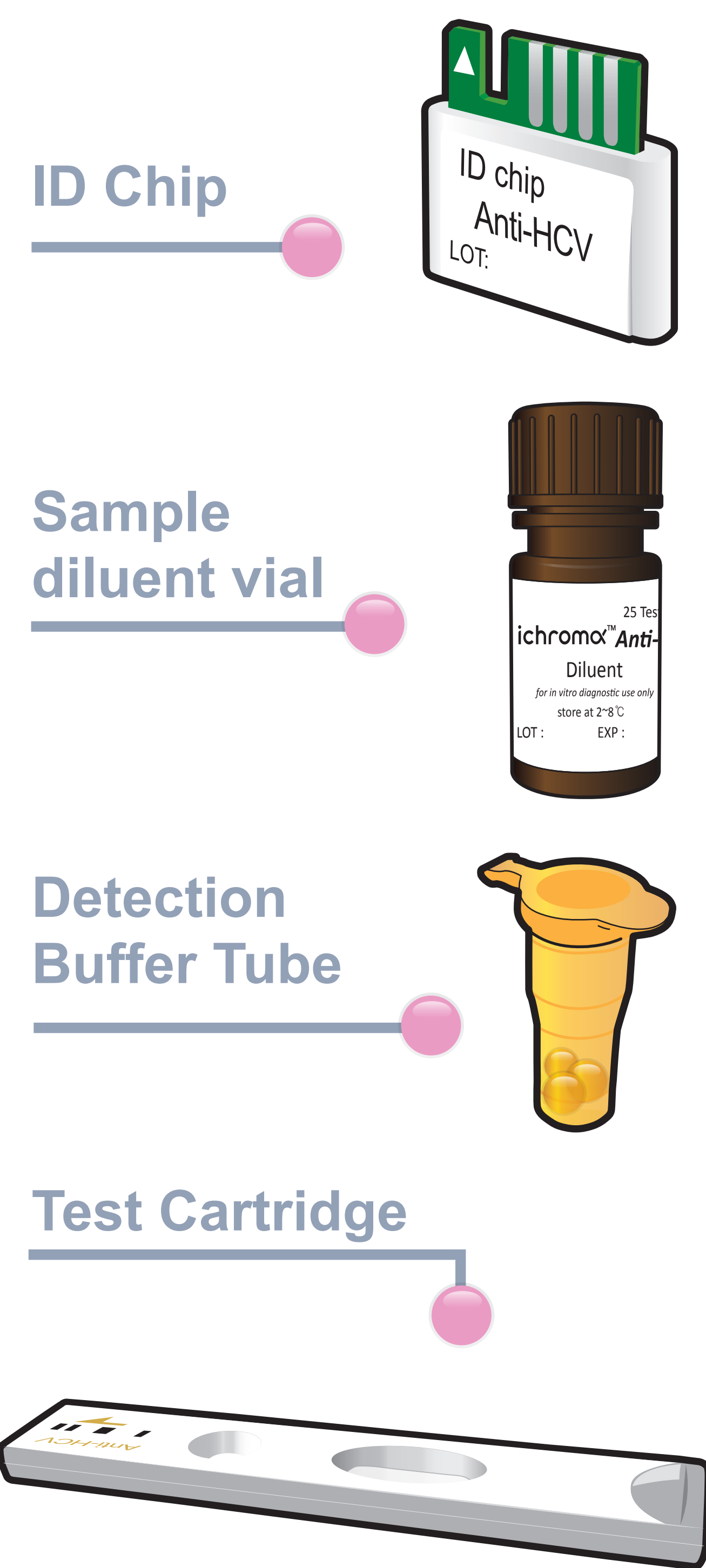


ichromα™ Anti-HCV

Test Setup

Test Components



iCHROMA II Reader

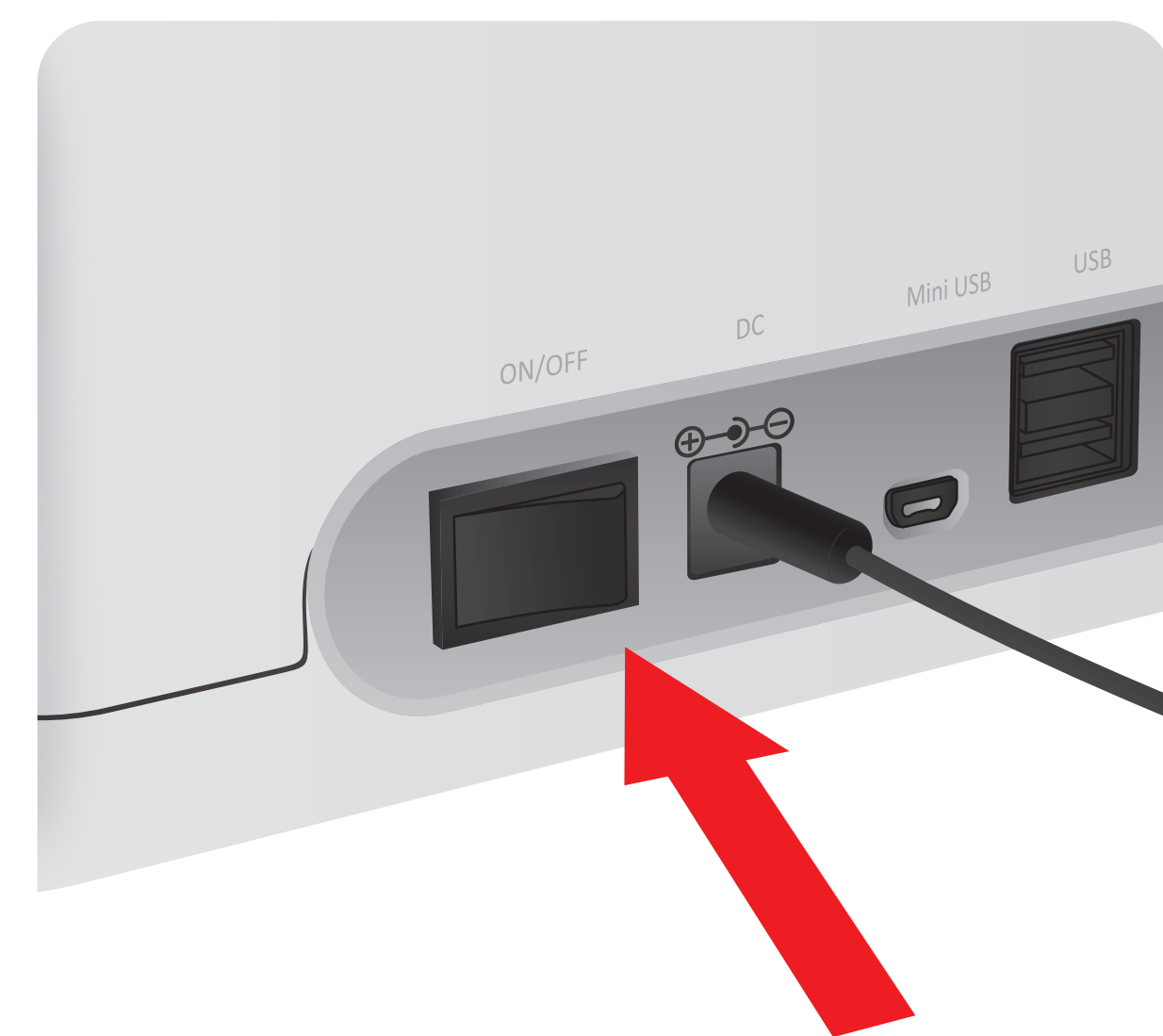


Important

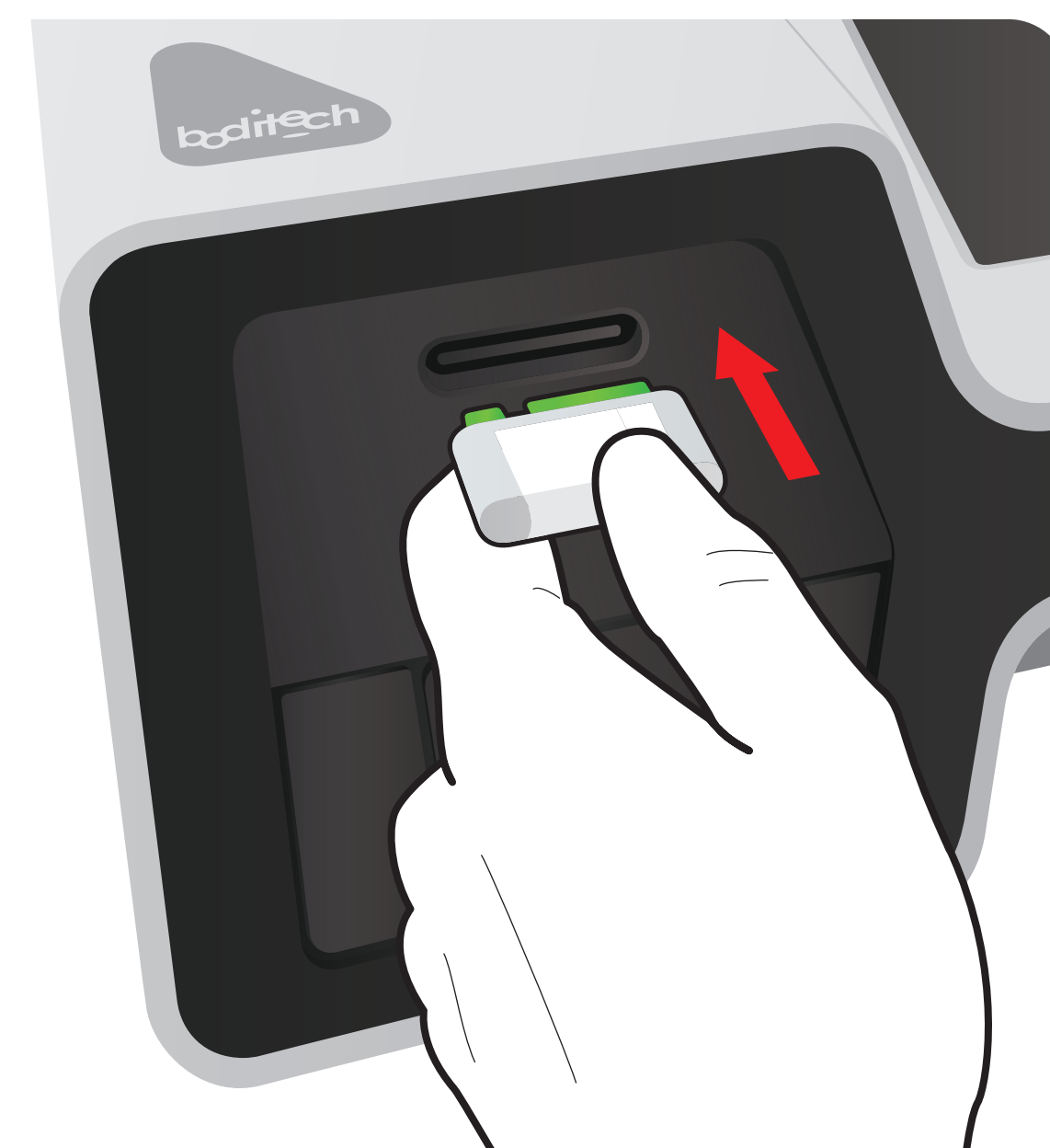
Allow 'Detection Buffer Tube' to attain room temperature at least for 30 minutes before performing the test

Make sure that lot number of the 'ID Chip' is exactly same as the lot number of 'Test Cartridge' and Detection Buffer Tube

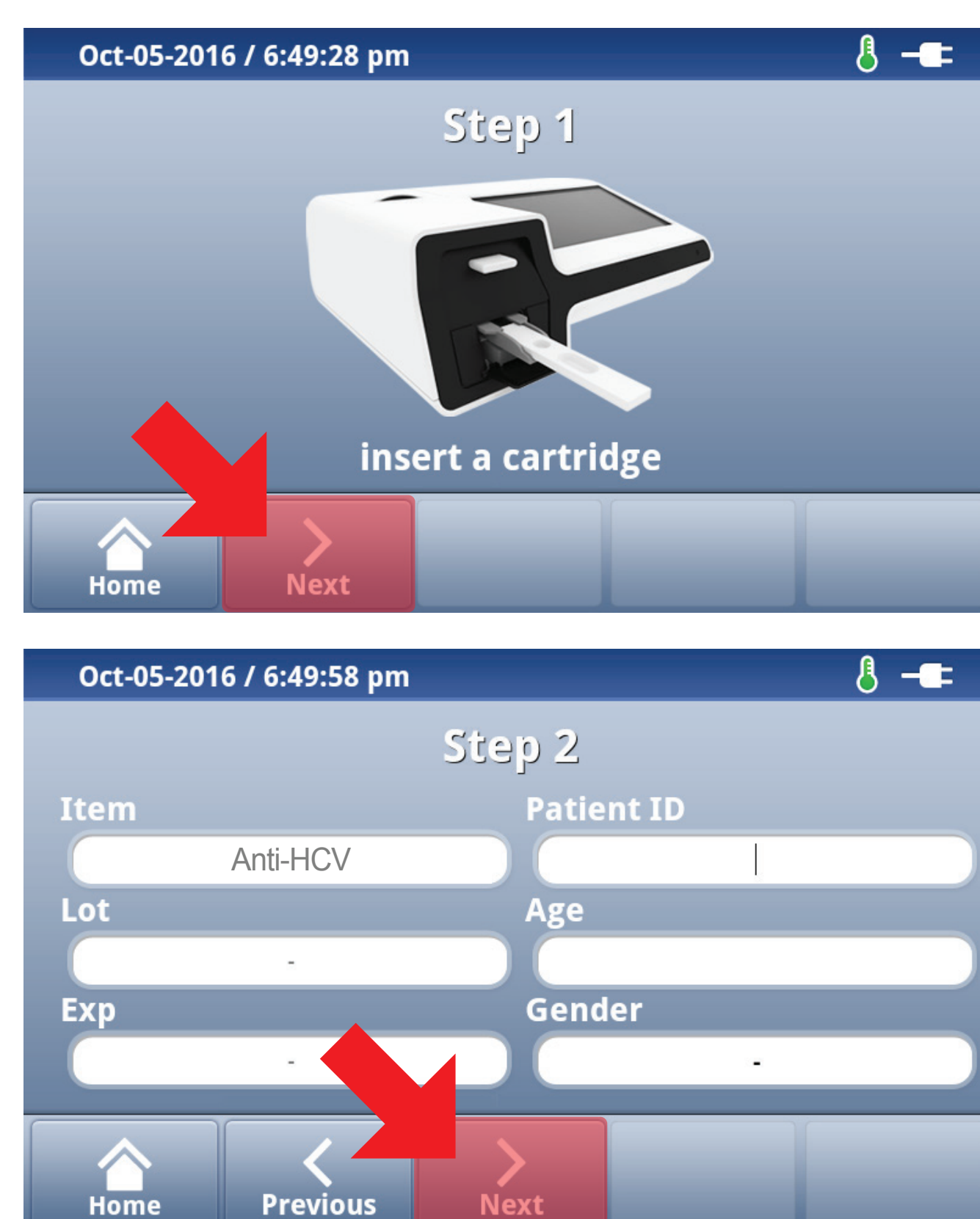
1 Turn the power switch 'On'



2 Insert ID Chip

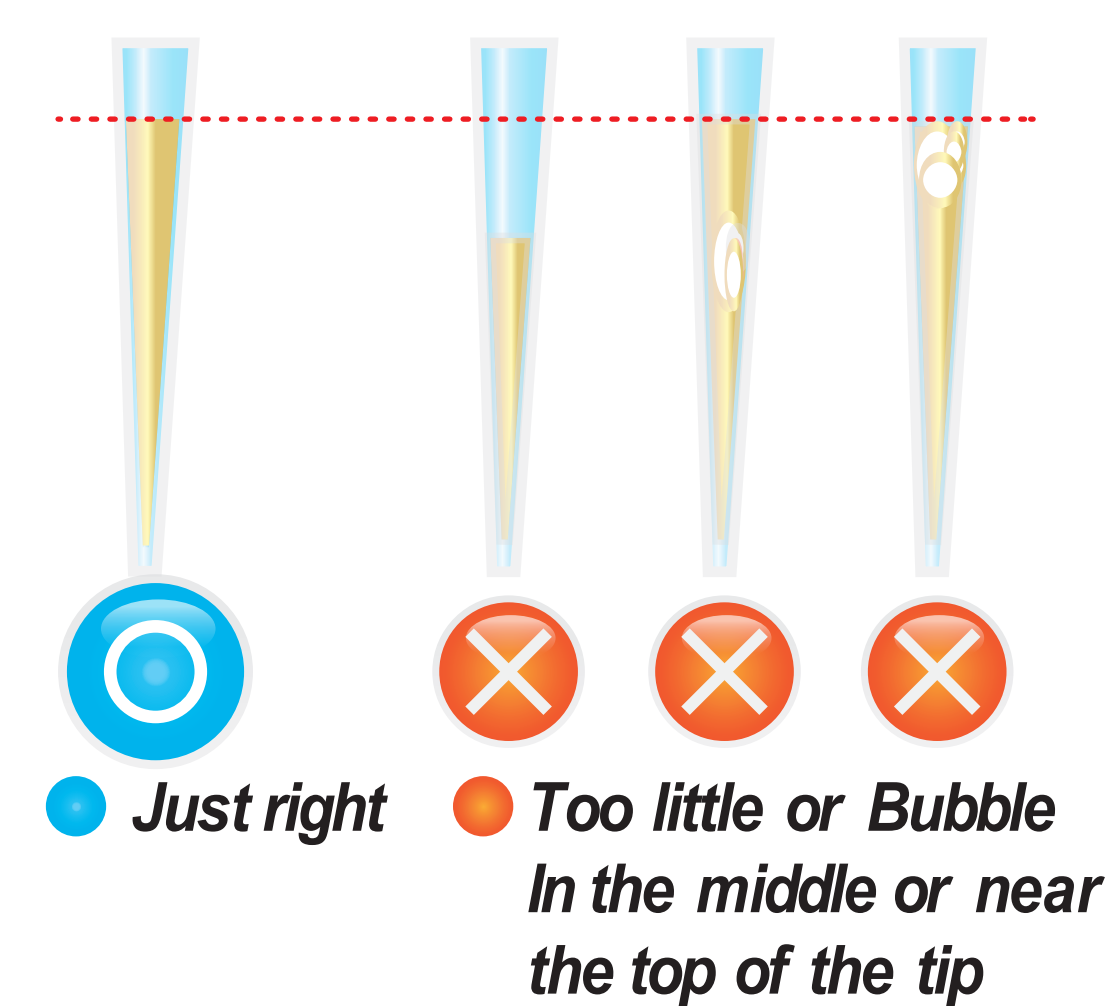


3 Press 'Select'

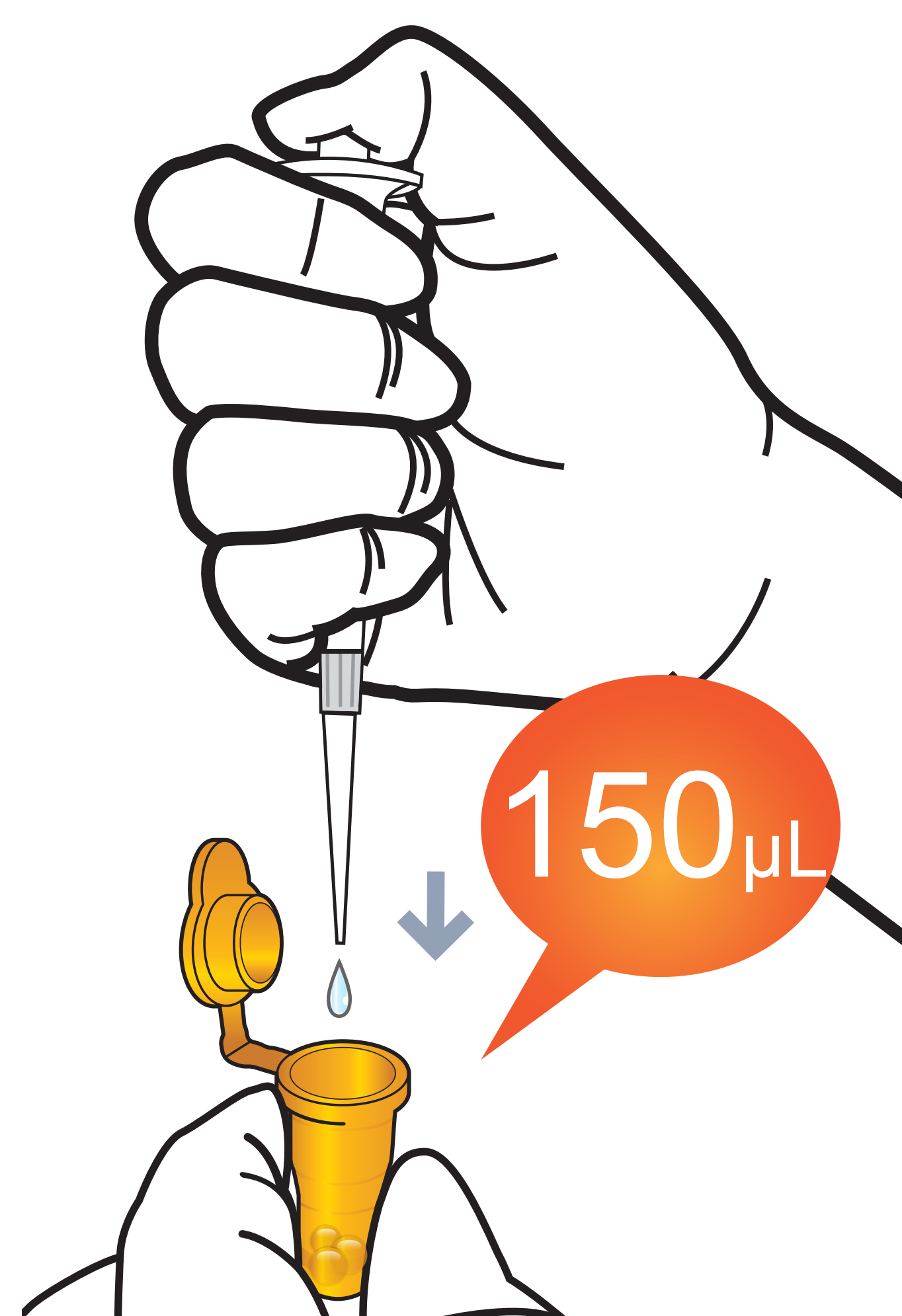


Test Procedure

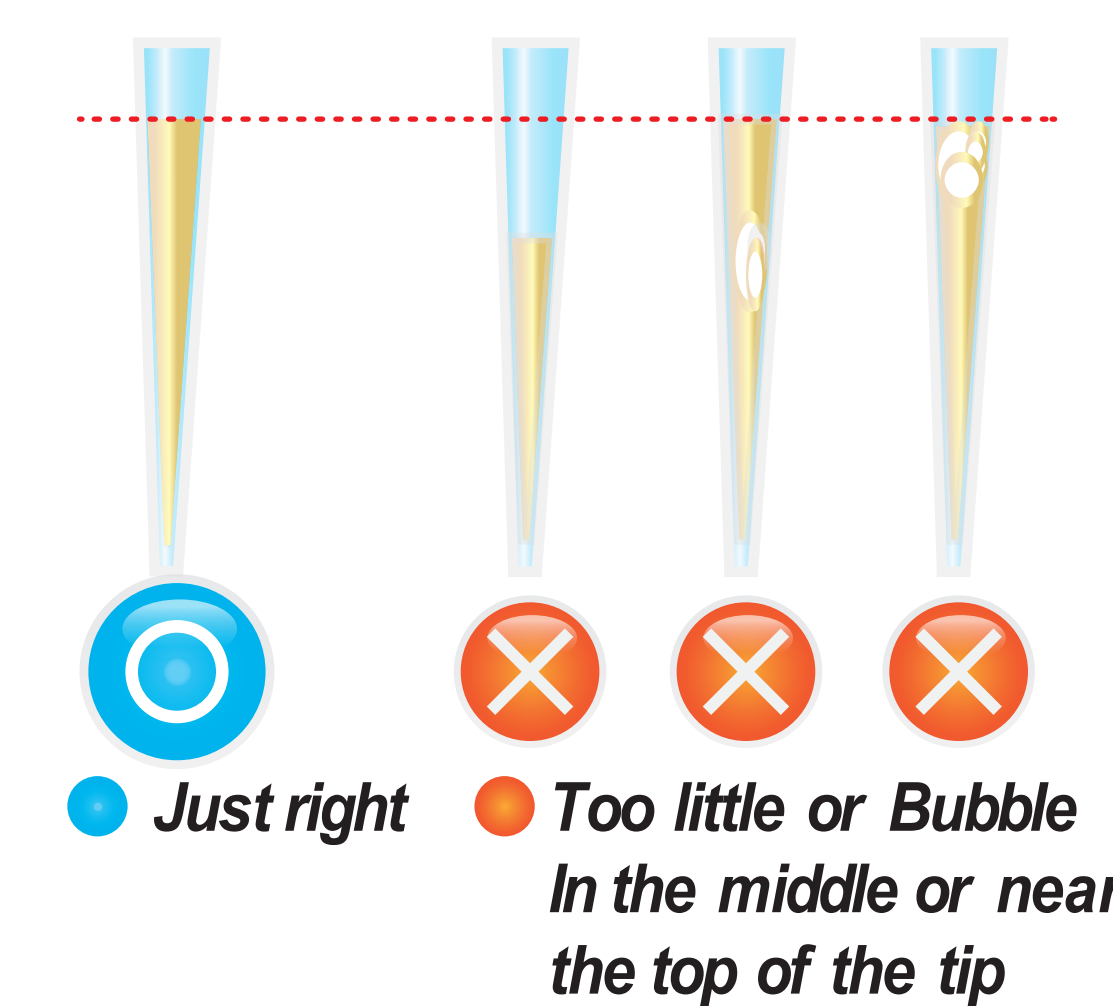
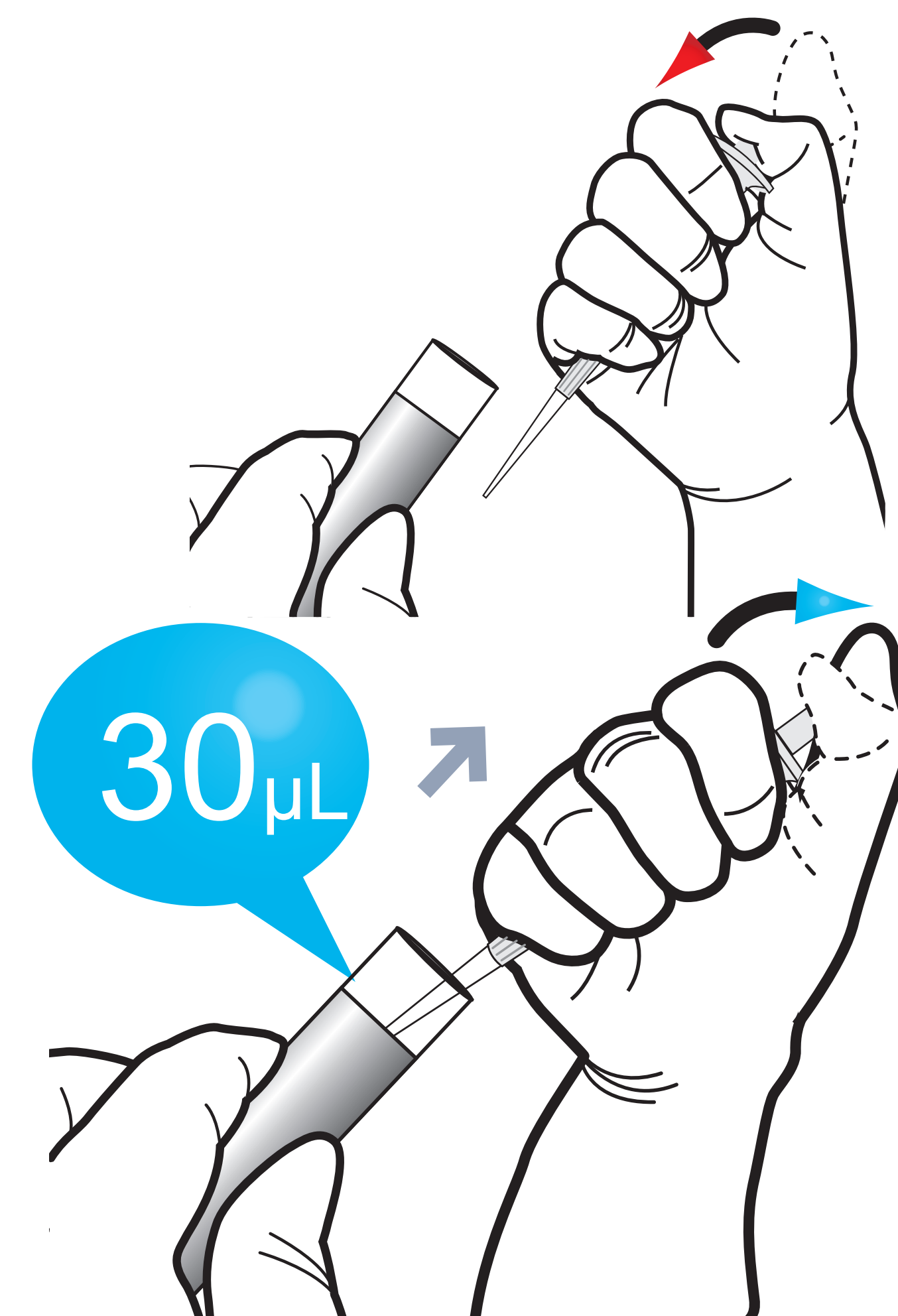
1 Draw 150μL of diluent buffer from diluent vial using a transfer pipette



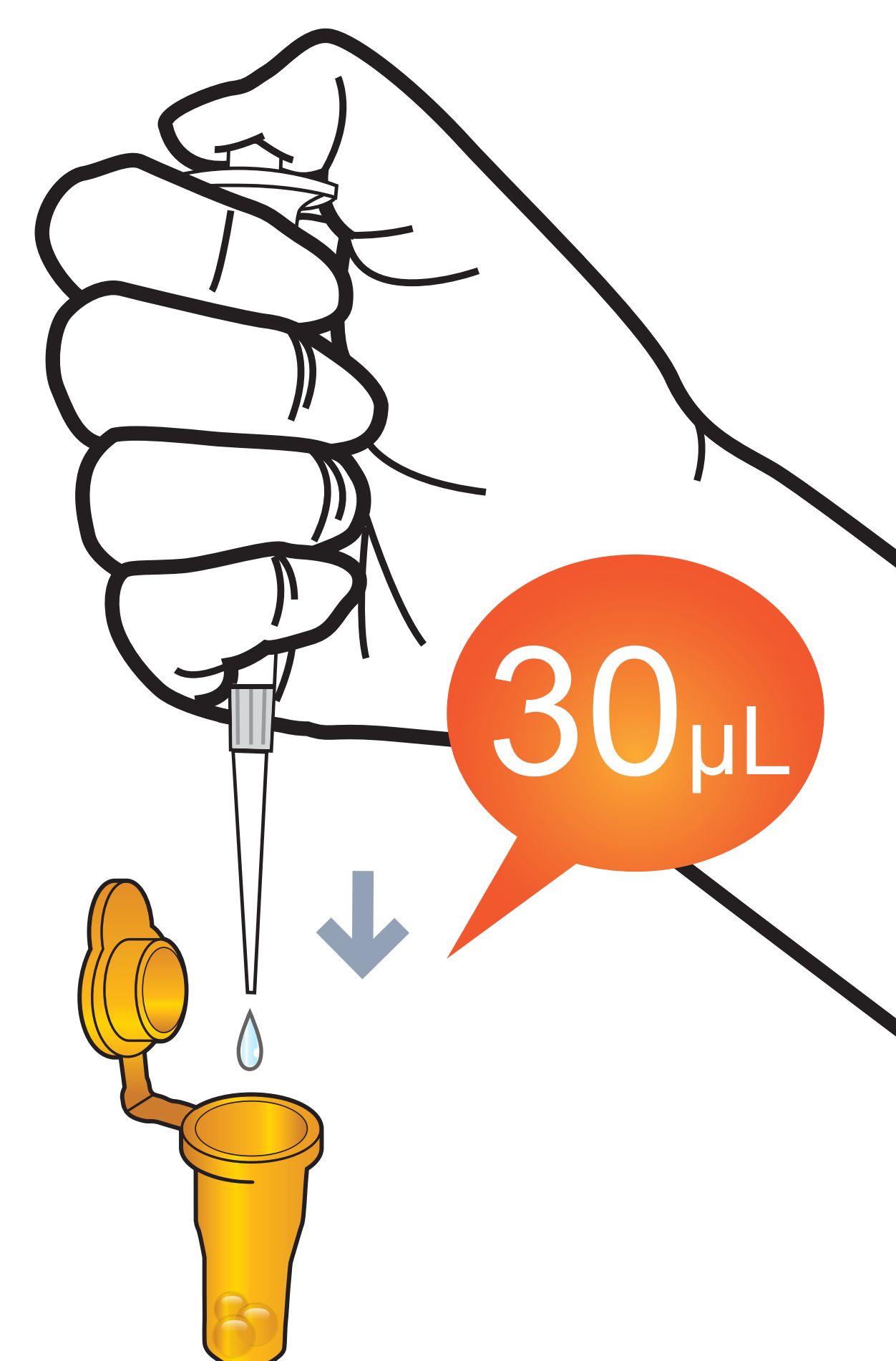
2 Add it into detection buffer tube



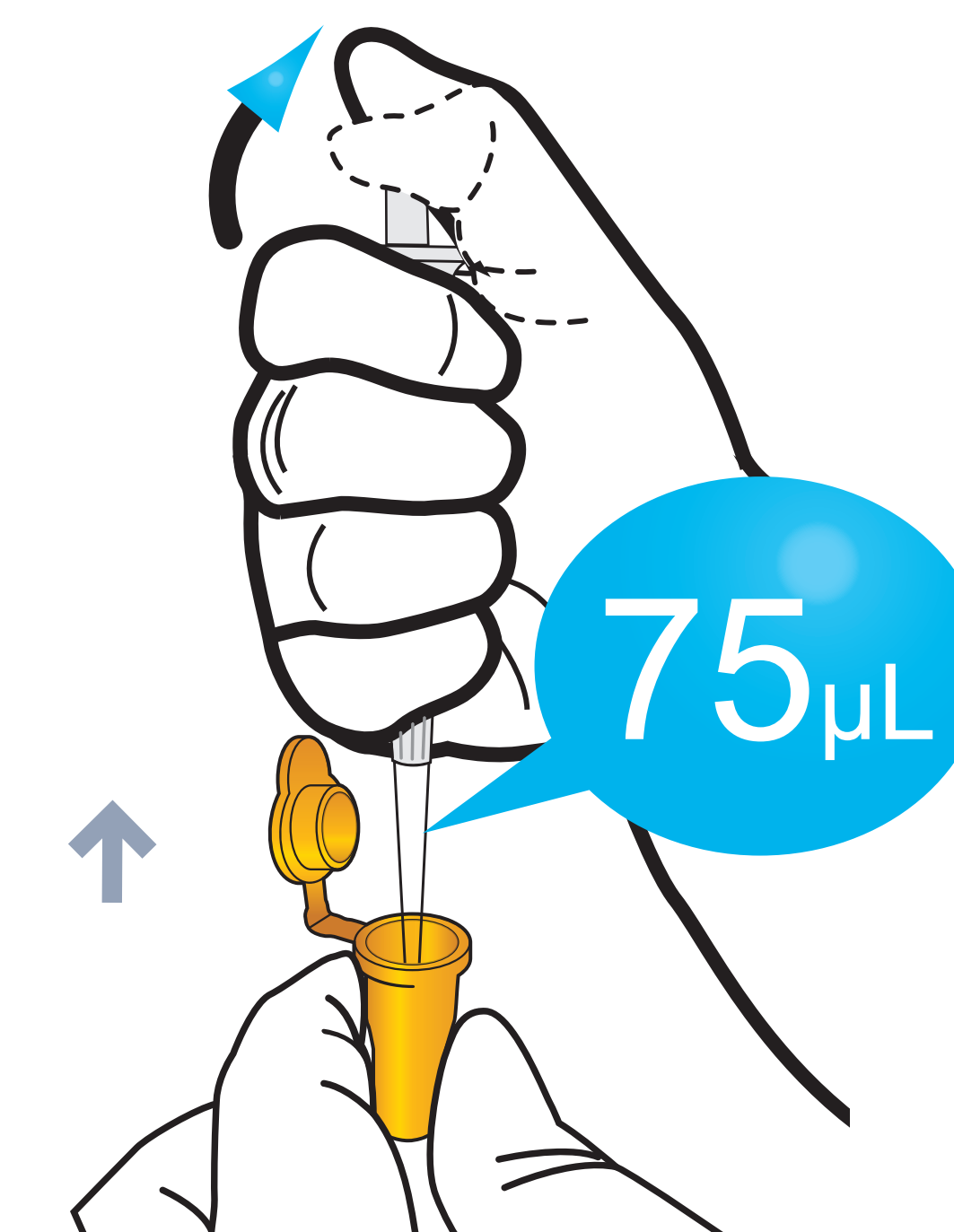
3 Take 30 μL of sample (WB/S/P/Control) using a transfer pipette



4 Transfer 30 μL of samples into the detection buffer tube using a transfer pipette



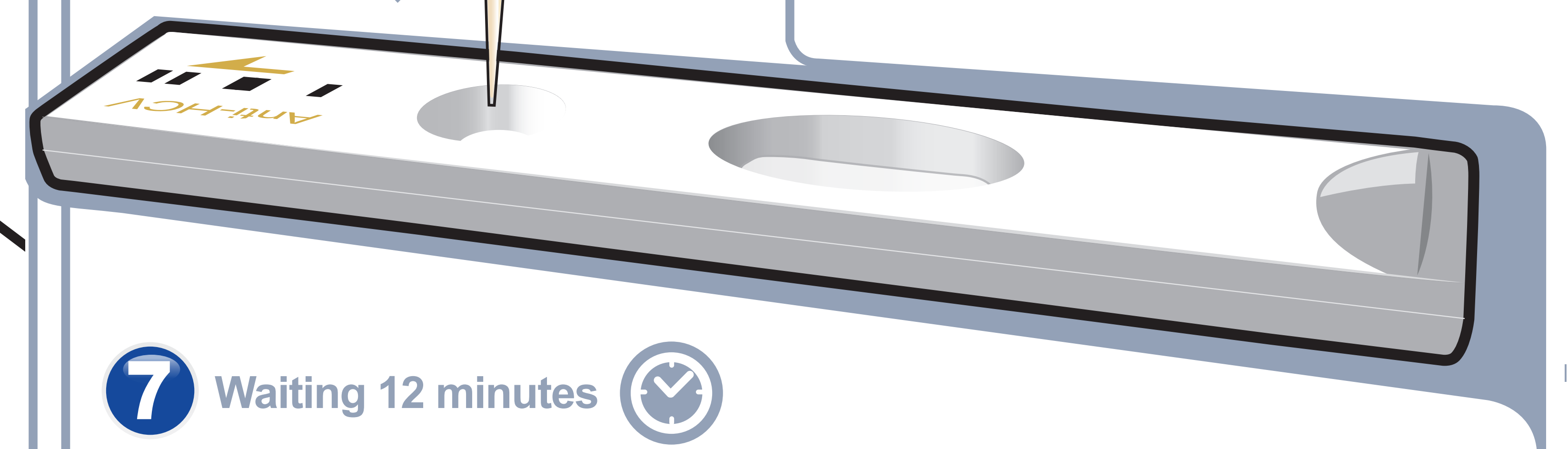
5 Mix well by pipetting 10-20 times.



6 Load 75 μL of a sample mixture to the sample well on the cartridge



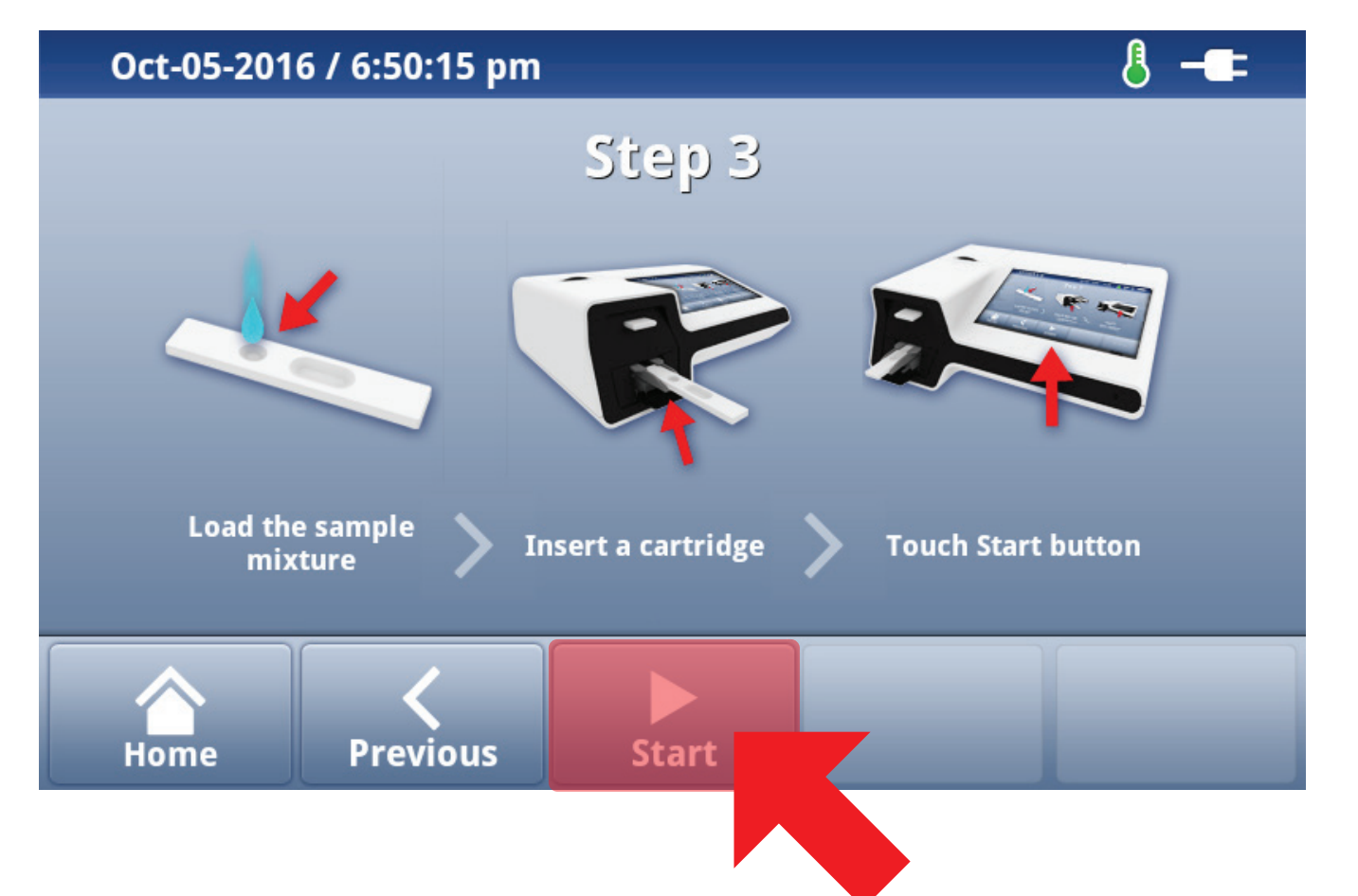
7 Waiting 12 minutes



8 Insert the test cartridge



9 Press 'Select'



10 Read the test result

