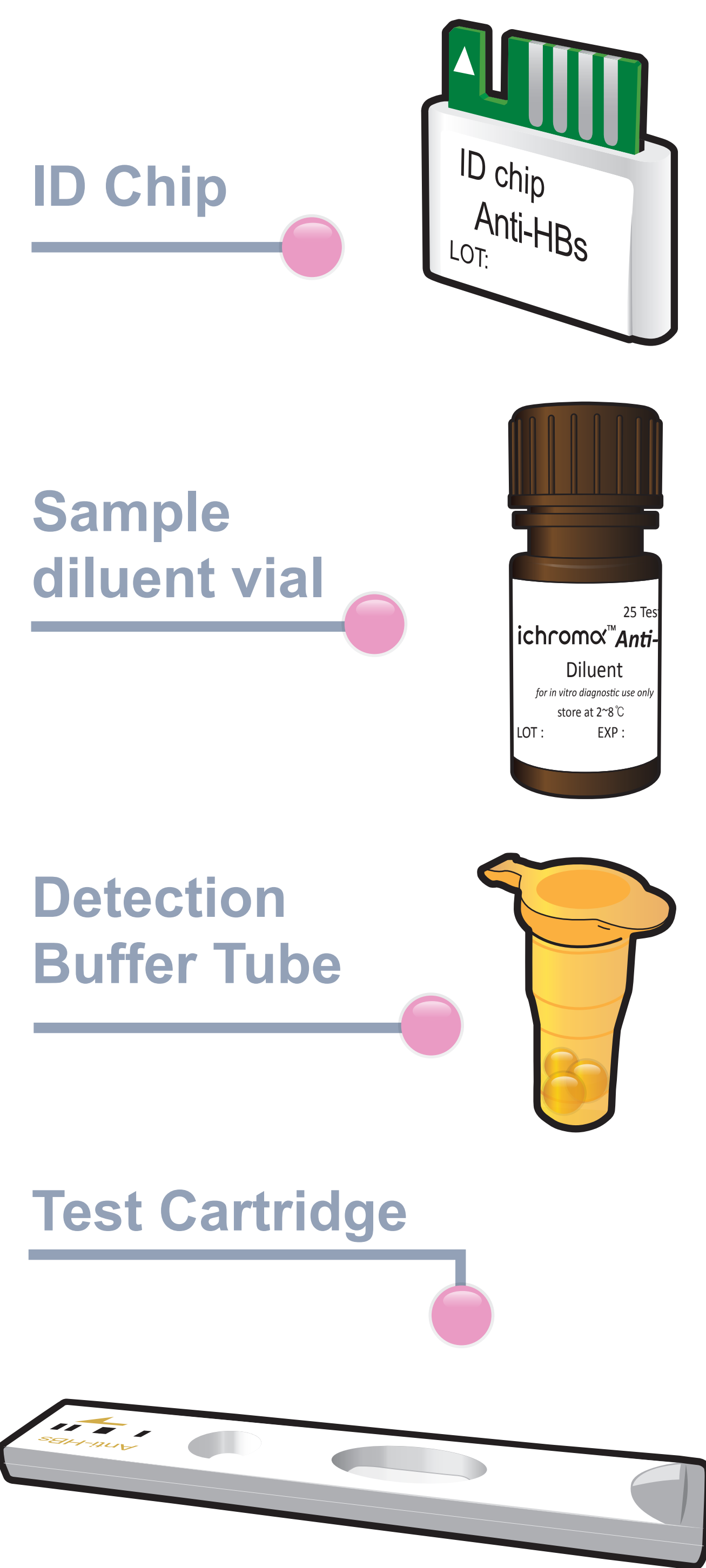


ichromα™ Anti-HBs

Test Setup

Test Components



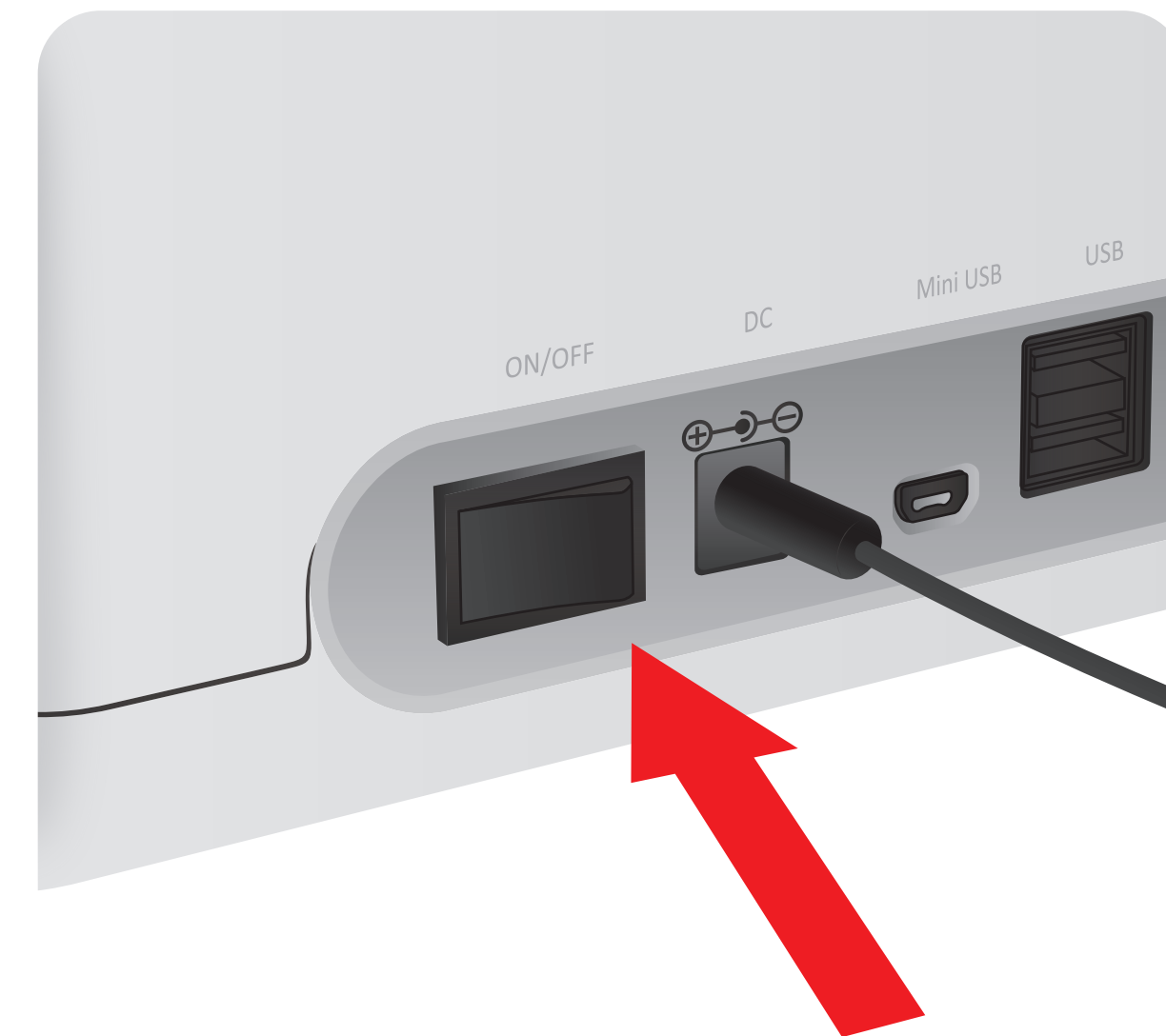
iCHROMA II Reader



Important

- Allow 'Detection Buffer Tube' to attain room temperature at least for 30 minutes before performing the test
- Make sure that lot number of the 'ID Chip' is exactly same as the lot number of 'Test Cartridge' and Detection Buffer Tube

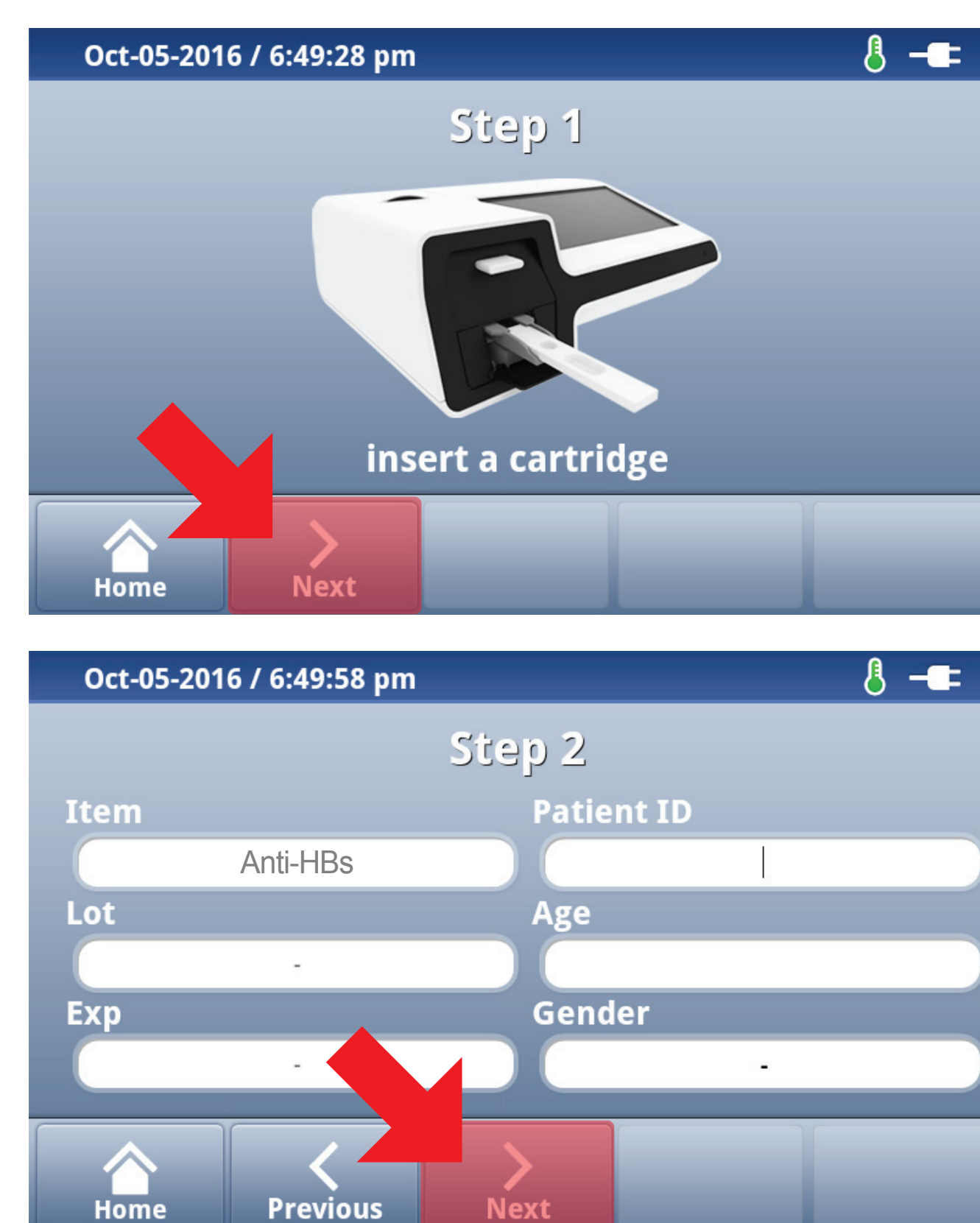
1 Turn the power switch 'On'



2 Insert ID Chip

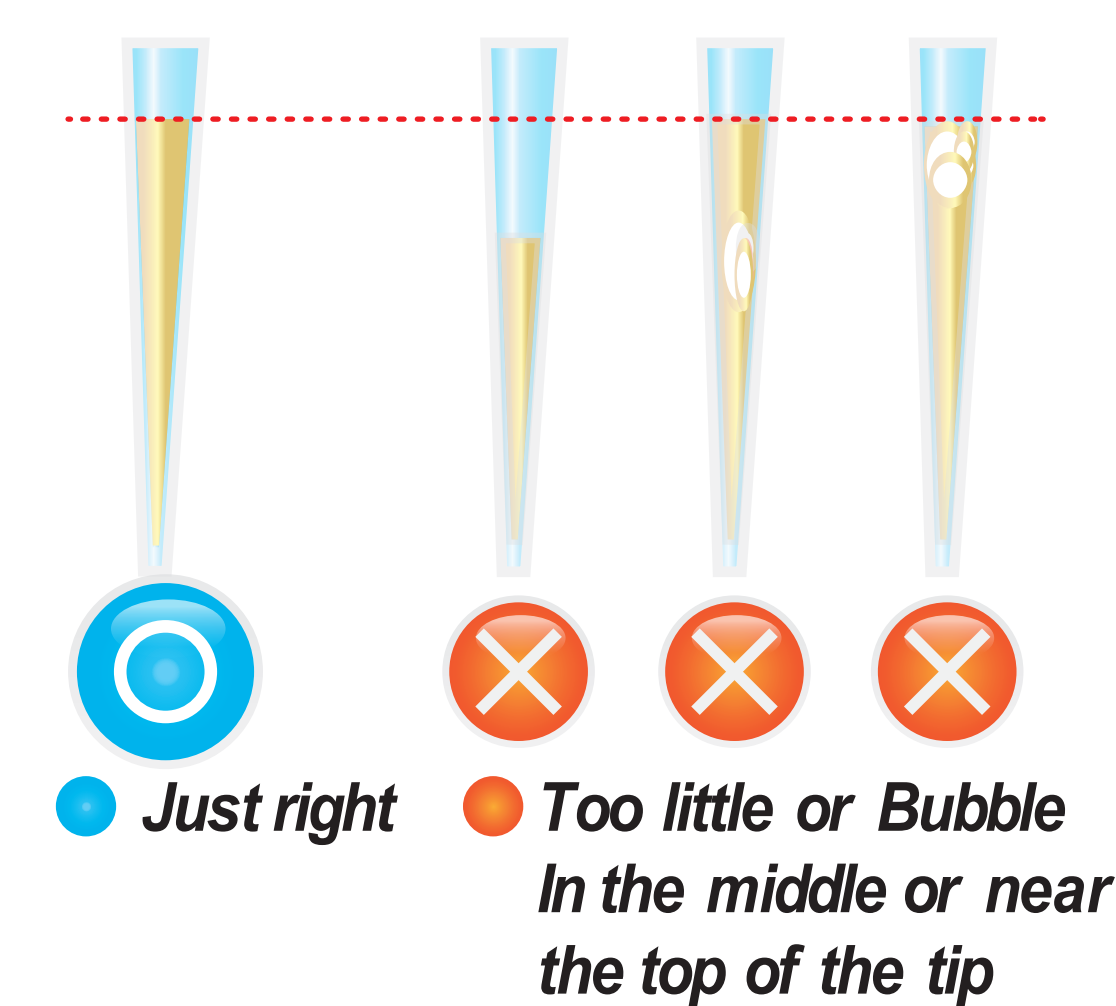


3 Press 'Select'



Test Procedure

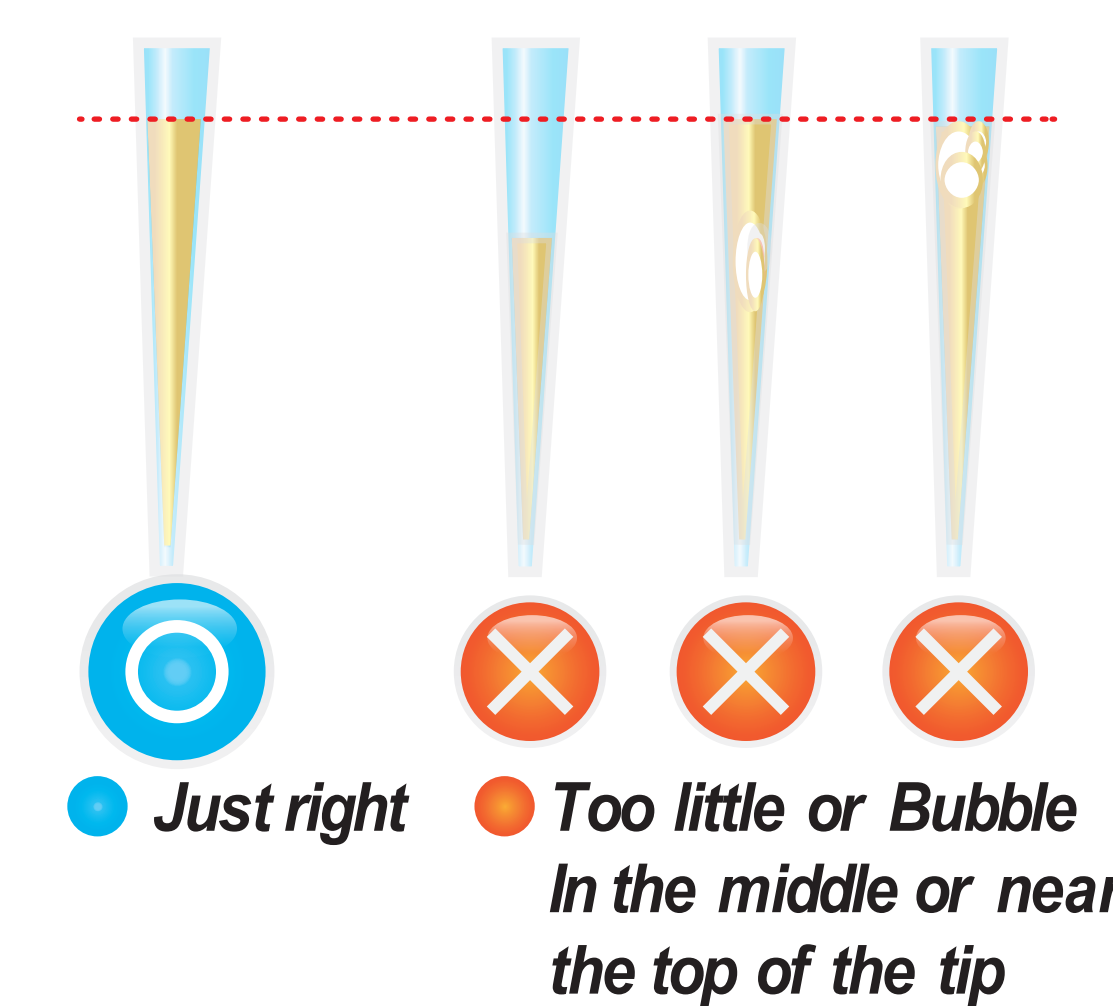
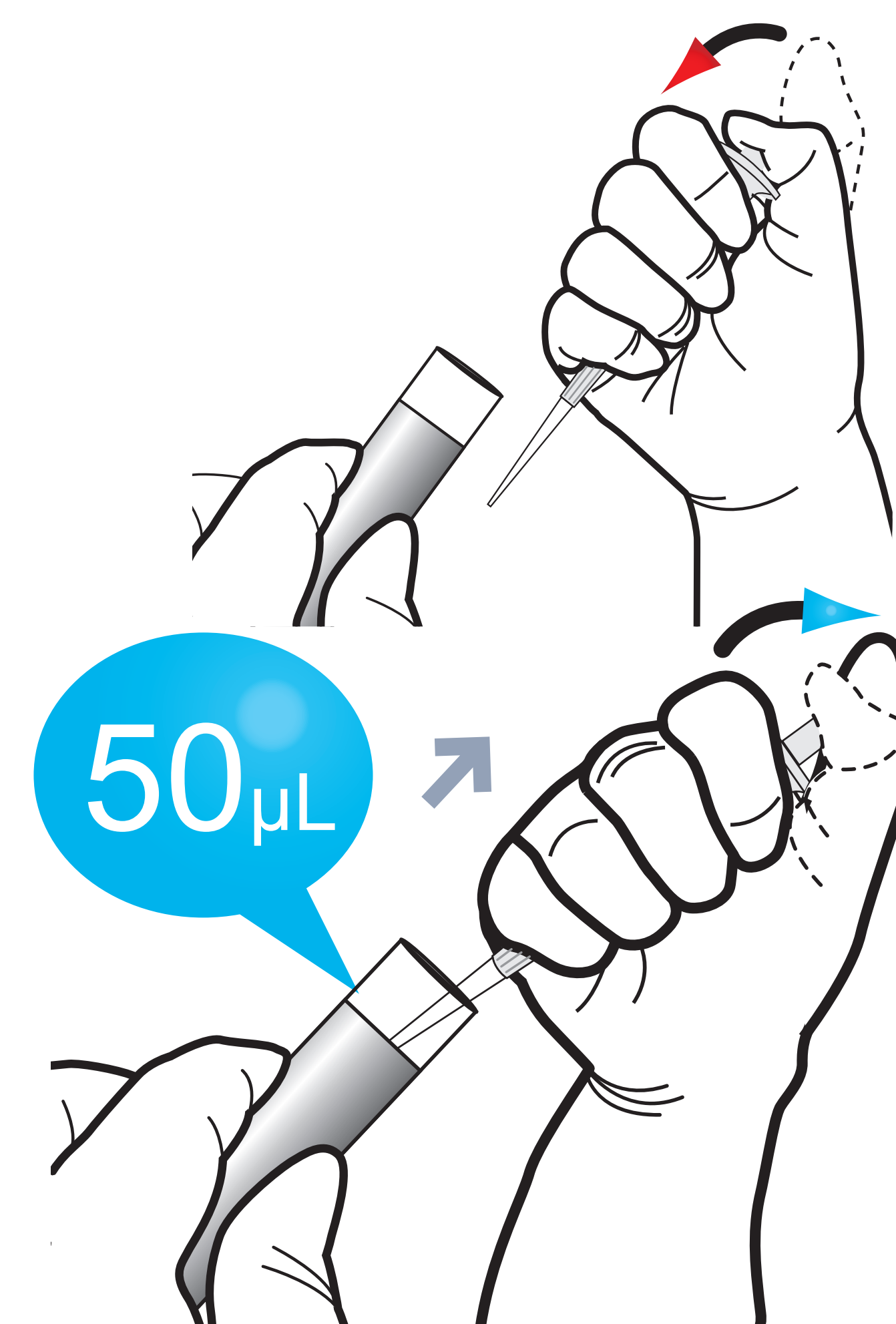
1 Draw 100μL of diluent buffer from diluent vial using a transfer pipette



2 Add it into detection buffer tube



3 Take 50 μL of sample (WB/S/P/Control) using a transfer pipette



4 Transfer 50 μL of samples into the detection buffer tube using a transfer pipette



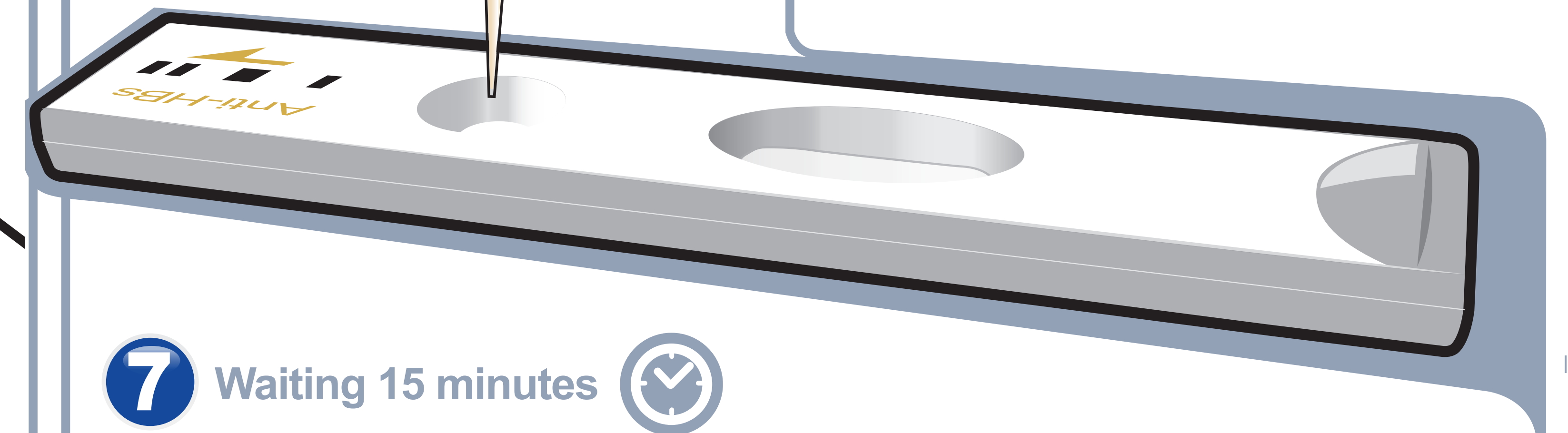
5 Mix well by pipetting 10-20 times.



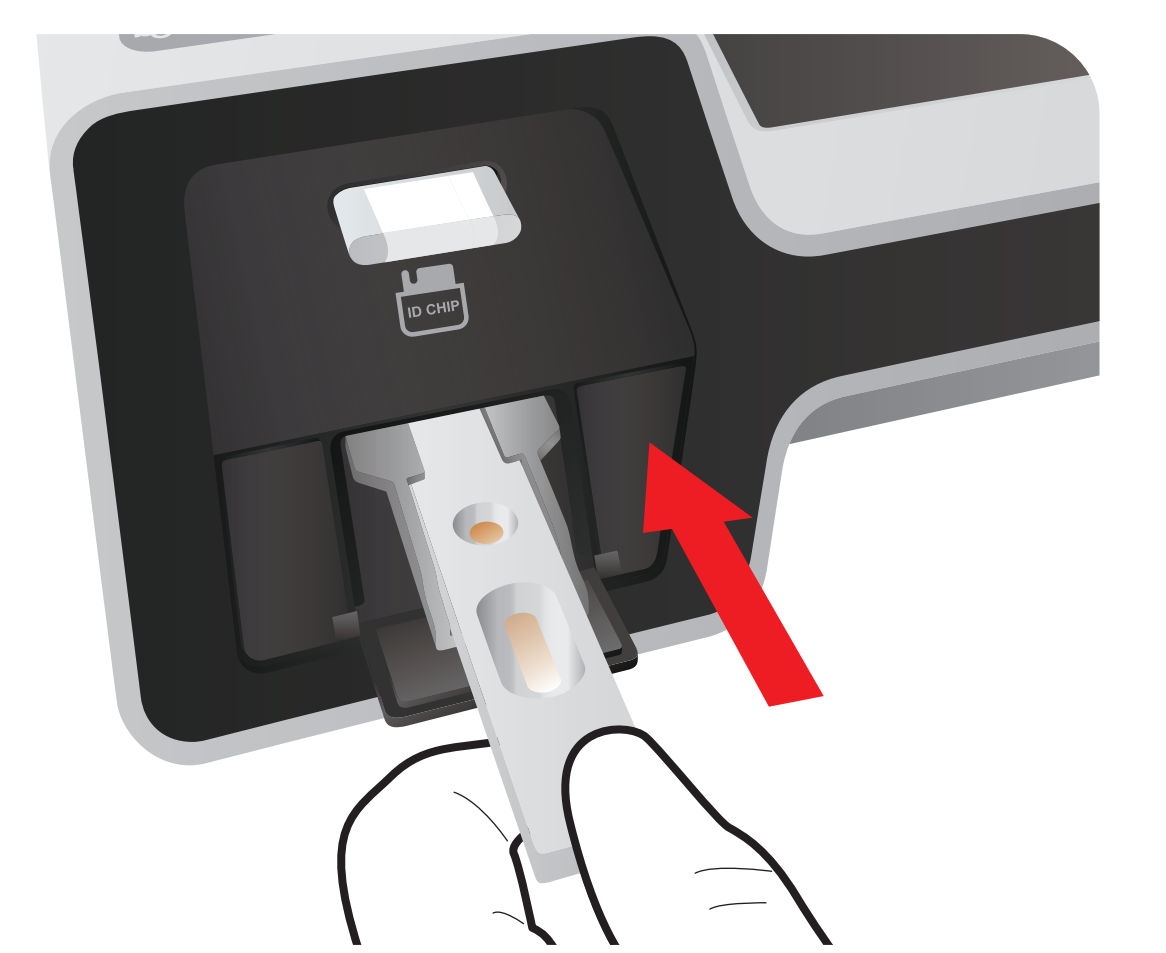
6 Load 100 μL of a sample mixture to the sample well on the cartridge



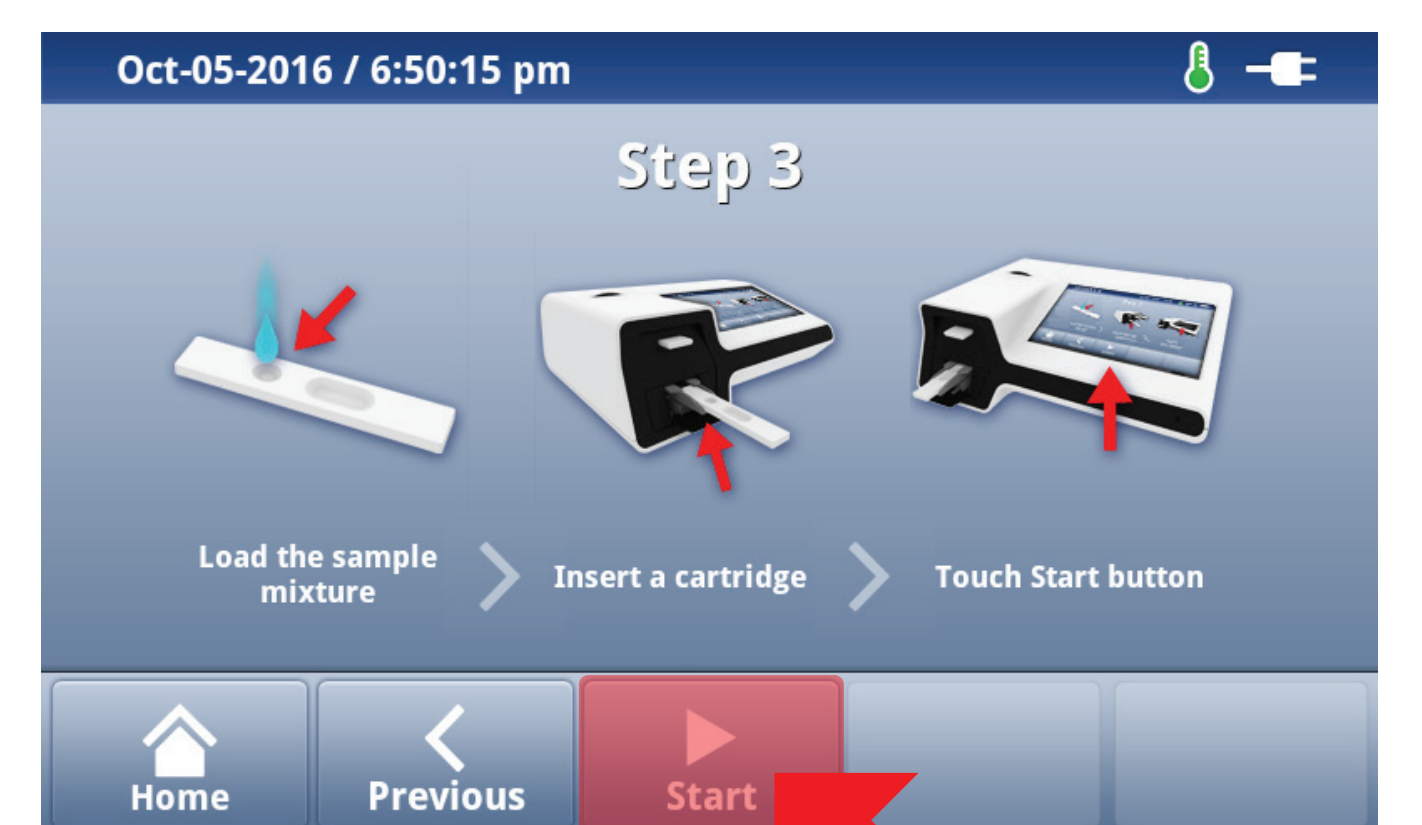
7 Waiting 15 minutes



8 Insert the test cartridge



9 Press 'Select'



10 Read the test result

